



APRIL

Boise State International Insider

News for International Students

April 25, 2013

International Student Services

Coming Events & Activities

Every Tuesday, 1:30 to 2:30pm – Drop-in Career Advising and support in the Student Diversity Center (SDC)

Every Wednesday, 3:30 to 5:00pm - Coffee & Conversation in the Student Diversity Center (SDC)
Free refreshments!

April 24th – ISS is hiring one F1 international student from Kuwait **APPLICATION DEADLINE TODAY** (*see details p.2*)

April 26th – Trang Doan Memorial Scholarship deadline (*see details p.1*)

April 26th – Deadline to purchase country flag sashes for graduation (*see details p.1*)

April 30th – BSU International Economic Summit (*see details p.2*)



Special Sashes for International Students!!

Congratulations on your upcoming graduation from Boise State!! Since you are an international student, you may wear a special sash during the graduation ceremony representing the country you are from.

Sashes are \$29 and you can order them in the International Learning Opportunities (ILO) office in the Career and Academic Advising building (not at ISS). ILO can only accept checks, money orders or EXACT change. **The deadline for orders is April 26th at 5 pm.**

You can also order directly through Vision Wear, but it will cost an extra \$9.

If you would like to see what most of the sashes look like, check out Visionwear's website.

<http://www.visionwear.com/cart/index.php/sashes.html>

Another Scholarship Opportunity

Trang Doan Memorial Scholarship for International Student Involvement at Boise State

Scholarships ranging from \$300 - \$600 will be awarded for Fall 2013 to selected international students who display commitment to involvement in campus life at Boise State University. We are looking for candidates who participate in campus events and activities, volunteer on campus or in the community, take on leadership positions, and/or participate in student organizations.

For more information on how to apply visit:

<http://iss.boisestate.edu/scholarships-finances/>



New dining place for our international students!!

Kabob House is now open and is serving Halal food to students who eat only halal meat. They have a big variety of Kabobs. Come check it out!

for more information look at their website: www.facebook.com/boisekabob

Check out this AWESOME video!

A Boise State International Student video has been created and posted to the International Admissions home page. Take a look! You might recognize a few people!

<http://www.youtube.com/watch?v=awqgqx8j93c>

Volunteering Opportunity!!!!

Hi, International Students! We are having a big event on April 30, and could really use some help! It is the BSU International Economic Summit (a high school student event), to be held at CenturyLink Arena, April 30, from 8-3. We need help with a registration table, and escorting VIPs to where they are supposed to be. We can use up to 4 people for the whole day, or whatever part of the day they can commit to – the biggest need being between 10 and 2.

If interested in volunteering, please contact Linda Gault with availability - it will be a very fun day, and we will provide lunch.

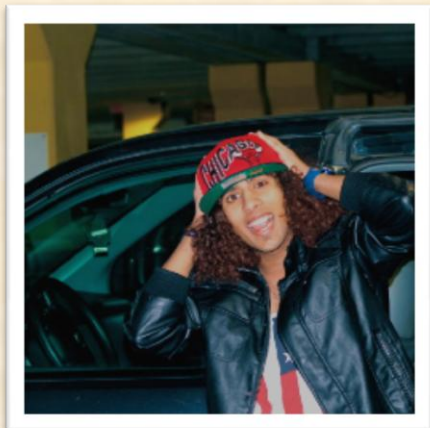
- Linda Gault, Operations Manager ([208-426-1193](tel:208-426-1193))

Idaho Council on Economic Education
International Economic Summit Institute www.econsummit.org
Boise State University

Kuwaiti Students!!!

ISS is looking to hire one Kuwaiti student to serve as a Cultural Peer Advisor. For information about this position, including instructions on how to apply, please visit: <http://iss.boisestate.edu/>

*Application deadline is **today**, April 24th at 5pm, so apply soon!*



Student Spotlight

By Alejandro Hortet

Fahad Alowaydhi is an international student from Saudi Arabia. He is pursuing a bachelors in Mechanical Engineering. Fahad has visited the United States, Bahrain, Germany and the United Arab Emirates (UAE) . He speaks English and Arabic. After graduation, he would like to go back to Saudi Arabia and work as an engineer.

What Fahad enjoys most about Boise State University is the quality of life, the safety and how quiet it can be during the night. Fahad used to live in Wisconsin, he says it was really cold over there, so comparing it to Idaho, he LOVES the weather here. He would like to tell all the future international students at BSU that they have come to the right place.

A letter of support from our Vice President for Student Affairs and Dean of Students

To our international student community:

Times of crisis test our character. As we share in the heartbreak that is unfolding across our nation for the tragedy in Boston, Massachusetts, we wanted to take this opportunity to reach out to you to extend our support. When situations like this arise and become highlighted in the national and international media, we understand this may cause you to feel worried or concerned about your own well-being. This incident allows us to reflect on our university community and the Shared Values that unite us.

Boise State is a community united by our commitment to upholding [University Shared Values](#) of Respect, Responsibility, Citizenship, Trustworthiness, Caring, Fairness and Academic Excellence. Please reflect on these values as you engage in your own understanding and as you negotiate these understandings in relation to others. If you have been impacted by violence or are feeling unsafe or unfairly targeted related to the tragedy in Boston, we hope you will seek guidance and support from those you trust at the university. Some of the resources available to you include:

Safety and Security Escort Services

This service is available 24 hours a day, every day of the week. If you would like an escort to your car or another campus location, please call University Security [\(208\) 426-6911](tel:2084266911).

Report Concerns

CARE stands for **C**ampus **A**ssessment, **R**esource, and **E**ducation. Living, learning, and working at Boise State University can be very stressful at times. All members of the university community, including students, faculty, and staff, will face challenges. As a result, some individuals may exhibit behavior that is concerning, disruptive, or threatening towards themselves or others. Boise State has established the **CARE Team** to provide assistance to the campus community in addressing these behaviors of concern. If you are aware of incidents or are a victim of a violent event please submit a CARE report. If you would like to file a CARE Report, please click [HERE](#) .

University Policy

[University Policy #1060 prohibits discrimination and harassment](#). The University upholds our obligations to have an educational and work environment that support the rights of all who work and study at Boise State University. Further, the [Student Code of Conduct](#) governs our interactions with students. Please be mindful of these important policies and if you have questions contact [Dr. Chris Wuthrich](#), Dean of Students at [\(208\) 426-1527](tel:2084261527).

We wish you a rewarding and productive semester.

Sincerely,

Dr. Lisa Harris, Vice President for Student Affairs

Dr. Chris Wuthrich, Dean of Students

Francisco Salinas, Director, Student Diversity & Inclusion

Christy Babcock, Associate Director, International Student Services

LADIES-Want to have a friendship with an American?

Several American women in Boise have asked to get to know a female international student. If you're interested in building a friendship by hanging out with one of them a couple times a month (as you're able), come to the front desk at the International Student Services office, and fill out the application for American Family Friends.

For more information contact Steve Dunne at
Steve@isiboise.org

The Boise State International Insider is a weekly feature of International Student Services, in the Student Diversity Center.

Christy Babcock, Associate Director

Stefanie Stauber, Sponsored-student Support Coordinator

Merrilou Burris, Management Assistant

Phone: 208-426-3652 ☐ Fax: 208-334-2015

Office Location: Student Union Bldg, 2nd floor, Room E2433

Mailing Address: 1910 University Drive, Boise, ID 83725-1335

Email: cbabcoc@boisestate.edu ☐ stefaniestauber@boisestate.edu ☐ merrilouburris@boisestate.edu

Website: <http://iss.boisestate.edu/>

Like us on Facebook:<https://www.facebook.com/#!/pages/Boise-State-International-Students/219242991358835>