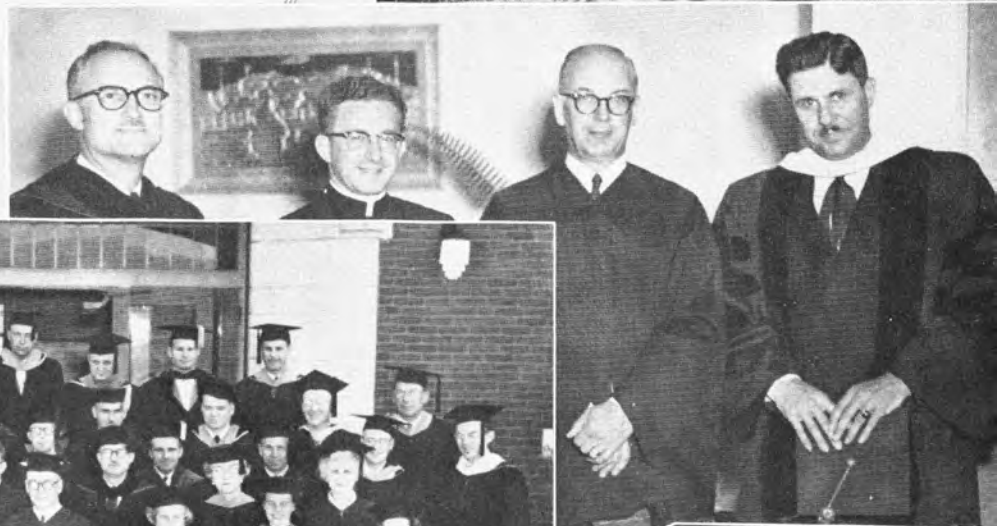




**CLASSES**



BOISE  
JUNIOR COLLEGE  
*Tricentennial Annual*  
COMMENCEMENT  
June 7, 1953



# Sophomores

ALLEN, GEORGE  
Boise, Idaho  
Education

AUBERT, BERNADINE  
Colville, Washington  
Education

AUSTIN, PATRICIA  
Boise, Idaho  
Education

AVERILL, ALMA  
Council, Idaho  
Secretarial Science

BACON, WYNEFRED  
Boise, Idaho  
Music Education

BENNETT, JEANNE  
Boise, Idaho  
Home Economics

BERRY, CAROL  
Boise, Idaho  
Education

BIEHN, ROLAND  
Klamath Falls, Oregon  
Chemical Engineering

BILLICK, ADA  
Nampa, Idaho  
Education

BLACK, MARJORIE  
Boise, Idaho  
Education

BLISS, DONNA  
Gooding, Idaho  
Secretarial Science

BRADSHAW, BEN  
Boise, Idaho  
Education

BROWN, JOAN  
Meridian, Idaho  
Education

BROWN, WALLY  
Pasco, Washington  
Physical Education

BROWNING, PHYLLIS  
Boise, Idaho  
General

BUHLER, LEROY  
Vale, Oregon  
Physical Education

BYRNE, SHIRLEY  
Boise, Idaho  
Psychology

CAMPBELL, JAMES  
Boise, Idaho  
Business





CARLEY, JOHN  
Boise, Idaho  
Engineering

CARPENTIER, RONALD  
Boise, Idaho

CHAPIN, MARVIN  
Boise, Idaho  
Pre-Dental



CHRISTIE, MAUREEN  
Boise, Idaho  
Art

CLAYTON, EDWARD  
Boise, Idaho  
Education

CRANDALL, GERALD  
Nyssa, Oregon  
Liberal Arts



CRAWFORTH, JAMES  
Boise, Idaho  
Engineering

CULVER, CAROL  
Boise, Idaho  
Education

DORMAN, REX  
Boise, Idaho  
General



DOUGLAS, JOAN  
Emmett, Idaho  
Business

DRAKE, WANDA  
Boise, Idaho  
General

EISENBARTH, KEITH  
Weiser, Idaho  
Business



ENNIS, RICHARD  
Boise, Idaho  
Business

FAIRCHILD, DEAN  
Boise, Idaho  
Engineering

FERNEY, GARY  
Boise, Idaho  
General



FERNEY, LYLE  
Boise, Idaho  
Business

FILLER, ELMER  
Coeur d'Alene, Idaho  
Physical Education

FLEMING, TERRILL  
Boise, Idaho  
Forestry

FOUNTAIN, RUTHANNE  
Meridian, Idaho  
Chemistry

GARDNER, BILL  
John Day, Oregon  
Civil Engineering

GARDNER, CHARLES  
Boise, Idaho  
Pre-Veterinarian



GARDNER, MARVIN  
Ola, Idaho  
General

GIBSON, MYLES  
Boise, Idaho  
Education

GRABNER, EDWARD  
Boise, Idaho  
General



GROFF, EDWARD  
Boise, Idaho  
Civil Engineering

HAILEY, BURREL  
Nampa, Idaho  
Electrical Engineering

HANSEN, MARY LUCILE  
Boise, Idaho  
General Science



HANSON, DELORES  
Nampa, Idaho  
Secretarial

HOSSNER, GLENN  
Ashton, Idaho  
Civil Engineering

HYDE, ELLIS  
Boise, Idaho  
Business



JACOBY, BILLIE  
Idaho Falls, Idaho  
Education

JEVONS, DONALD  
Boise, Idaho  
Art

JOHNSON, MILES  
Boise, Idaho  
Business



KALLAS, DAVE  
Boise, Idaho  
Business

KANE, BUNNY  
Boise, Idaho  
Home Economics

KEENER, GERALD  
Boise, Idaho  
Education





KULL, GLENN  
Decatur, Illinois  
Forestry

LANE, RAYMOND  
Meridian, Idaho  
Science

LARSON, SHIRLEY  
Twin Falls, Idaho  
Education



LIZASO, JOSEPHINE  
Boise, Idaho  
Education

LODGE, EDWARD  
Caldwell, Idaho  
Business

McDAID, HELEN  
Boise, Idaho  
Home Economics



MALMSTROM, DICK  
Boise, Idaho  
Business

MARKUS, MEL  
Nampa, Idaho  
General

MATHEWS, KRISTIN  
Boise, Idaho  
General



MAYPOLE, DONALD  
Boise, Idaho  
General

MEDSKER, JERRY  
Boise, Idaho  
Physical Education

MOGENSEN,  
ANNA MAE  
Fruitland, Idaho  
Sociology



MOORE, AL  
Boise, Idaho  
Business

MOORE, KENNETH  
Meridian, Idaho  
Law

MORRISON, GLADYS  
Boise, Idaho  
General



MORROW, SHARON  
Boise, Idaho  
Education

NEWBY, RICHARD  
Remmerer, Wyoming  
Science

NEWTON, MARJORIE  
Boise, Idaho  
General

NICHOLS, SHARON  
Emmett, Idaho  
Education

OPPEL, WAYNE  
Boise, Idaho  
Business

PARK, TONY  
Boise, Idaho  
General



PETERSON, WALTER  
Wendell, Idaho  
Civil Engineering

PETERSON, ROBERT  
Emmett, Idaho  
Pre-Law

PRIEST, RICHARD  
Boise, Idaho  
Journalism



PRITZL, BARBARA  
New Plymouth, Idaho  
Secretarial Science

PURSELL, DAVID  
Boise, Idaho  
Business

REA, BARBARA  
Kuna, Idaho  
Education



REDISKE, JOANNE  
Boise, Idaho  
Home Economics

RICHARDS, LARRY  
Boise, Idaho

ROBBINS, GALE  
Emmett, Idaho  
Business



ROBINSON, ELTON  
Oreana, Idaho  
General

SCHOLES, MARY  
Boise, Idaho  
Education

SIEBE, ALLENE  
Boise, Idaho  
Secretarial Science



SIEVERS, ELSIE  
Bellevue, Idaho  
Secretarial Science

SMITH, EARL  
Castleford, Idaho  
Business

SMITH, GEORGE  
Boise, Idaho  
Biological Science





STAUTH, CAROL  
Boise, Idaho  
Science

STEVENS ON, DONALD  
Boise, Idaho

SWANSON, GEORGE  
Boise, Idaho  
Business Administration



SWEANY, LEONE  
Boise, Idaho  
General

SWEETMAN, JOHN  
Boise, Idaho  
Architectural

TONNING, DEE  
Boise, Idaho  
Engineering



VOLLMER, JOE  
Boise, Idaho  
Business

VOSTREZ, LEON  
Meridian, Idaho  
Music

WARDLE, WILLIAM  
Boise, Idaho  
Pre-Dental



WHITE, DONNA LEE  
Boise, Idaho  
Secretarial Science

WILLIAMS, PERRY  
Klamath Falls, Oregon  
Chemical Engineering

WILSON, BILLIE  
Weiser, Idaho  
Education



WILSON, JOAN  
Boise, Idaho  
General Science

WILSON, RUTH  
Boise, Idaho  
General

YEAMAN, ELISE  
Boise, Idaho  
General



YOUNG, DARLENE  
Boise, Idaho  
Home Economics