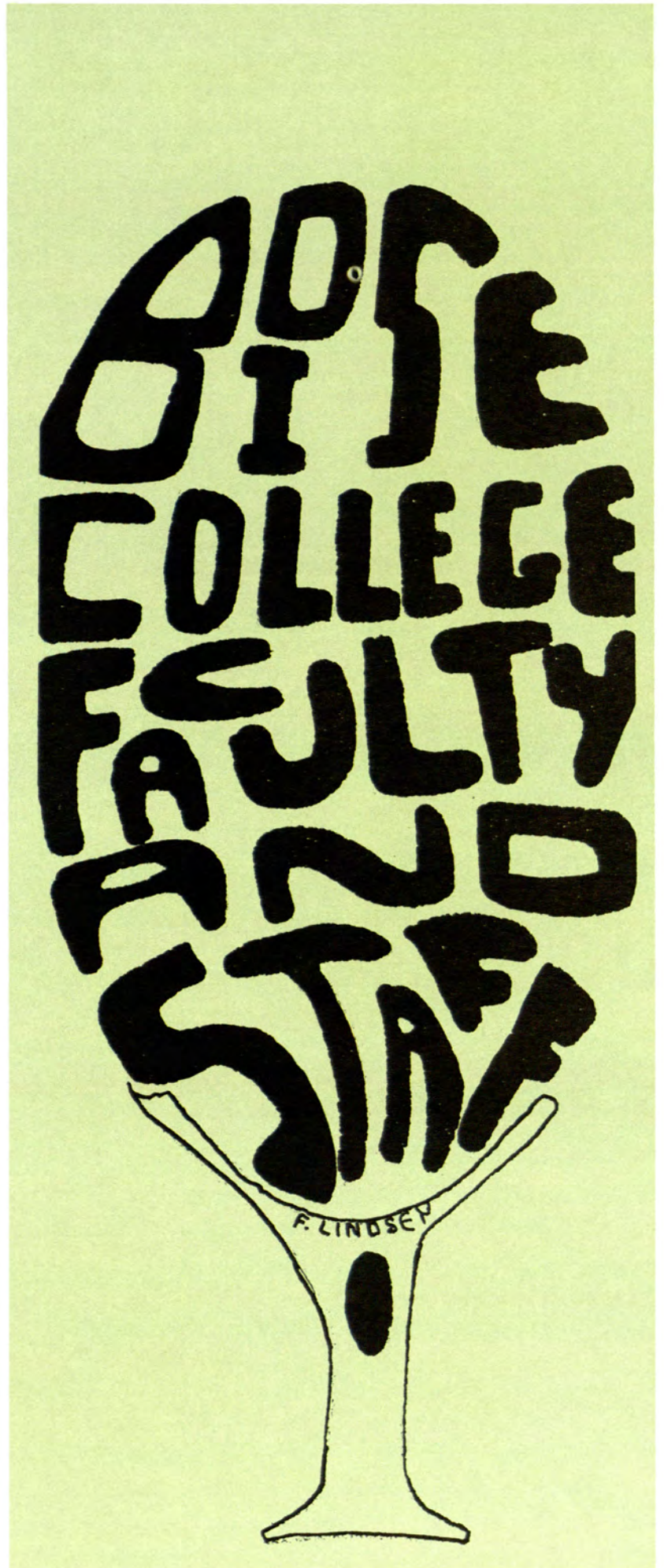
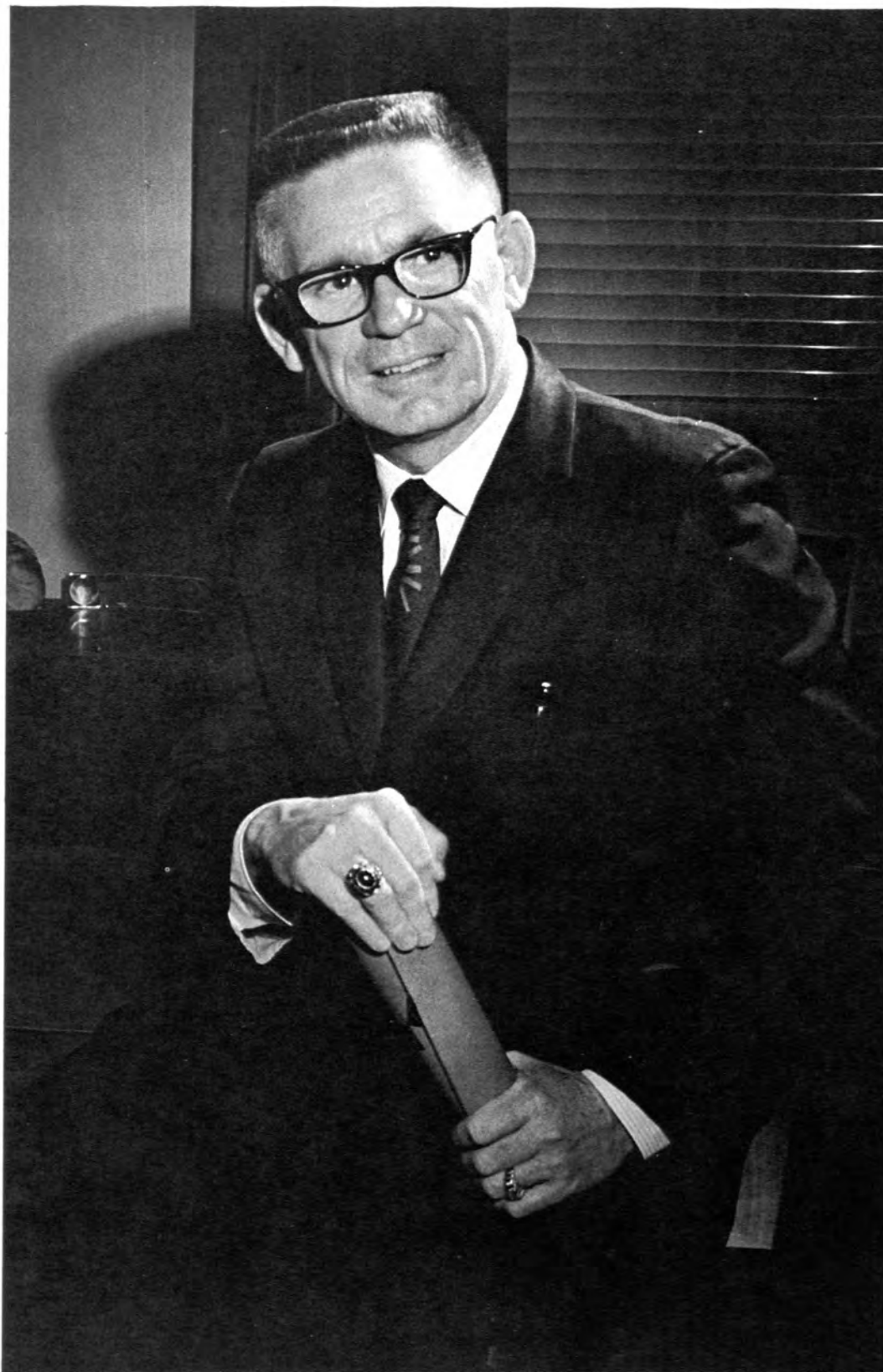


ADMINIST

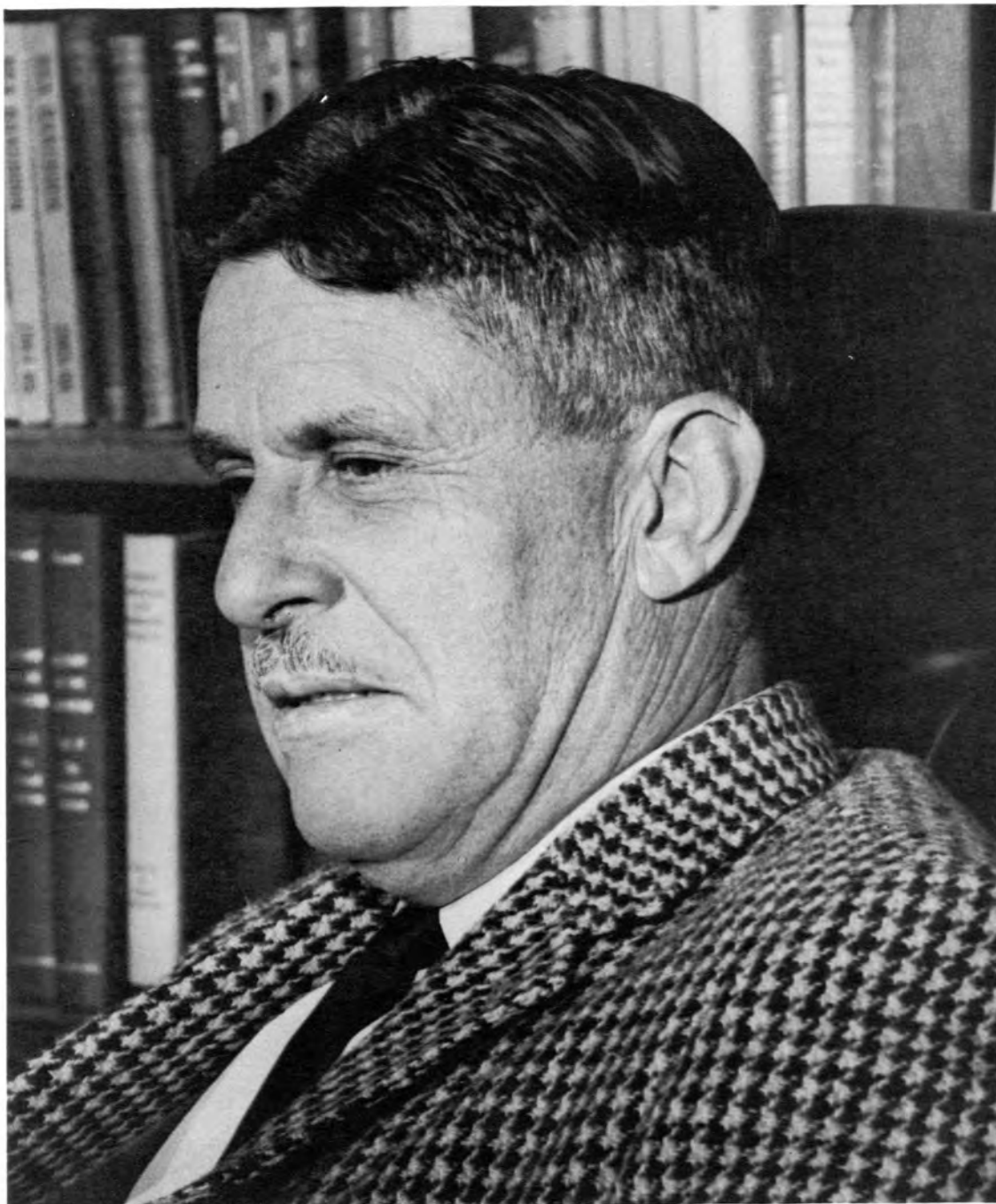
RATION





JOHN B. BARNES
President
Boise College

B.A., M.A., University of Denver
Ed.D., University of Wyoming



DR. EUGENE B. CHAFFEE
Chancellor

Member, Board of Trustees
Boise College

B.A., Occidental College; M.A., University of California
George Washington University
Litt. D., College of Idaho
LL.D., University of Idaho

BOARD OF TRUSTEES



JOHN P. TATE
Chairman



JAMES D. McCLARY
Vice Chairman



ROBERT S. OVERSTREET



RALPH J. COMSTOCK, Jr.



DONALD M. DAY



DWANE R. KERN
Secretary Treasurer
Boise College Business Manager

ADMINISTRATIVE COUNCIL



Administrative council, from left: W. L. Gottenberg, Vice-President; Dr. J. Alfred McCauslin, Dean of Students; Dr. Acel H. Chatburn, Dean of Faculty; Dwane R. Kern, Business Manager; and John B. Barnes, President.



W. L. GOTTENBERG
Vice-President
Acting Chairman, Vocational-Technical Division
Boise College
B.A., University of North Dakota
M.A., University of Montana

DR. J. ALFRED McCAUSLIN
Dean of Student Personnel Services
B.A., Rollins College
M.A., M.S., Pennsylvania State University
Ed.D., University of Maryland



ADMINISTRATIVE OFFICERS



EDWIN E. WILKINSON
Dean of Men
B.A., Whitworth; M.S., Washington State
University



HELLEN E. MOORE
Dean of Women
B.A., Drake University; M.A., University of
Washington
University of Utrecht, Netherlands



SAMUEL B. RIGHTER
Director of Admissions
B.S. University of Oregon
M.Ed., University of Portland



ALICE H. HATTON
Registrar
B.A. University of Washington
Colorado State College



DR. ACEL H. CHATBURN
Dean of Faculty
B.A., College of Idaho;
M.A., University of Colorado;
Ed.D., Washington State University, University of California



GERALD R. REED
Academic Affairs Coordinator
B.S., Ed., University of Wyoming;
M.Ed., University of Idaho;
Ed.D., Washington State University

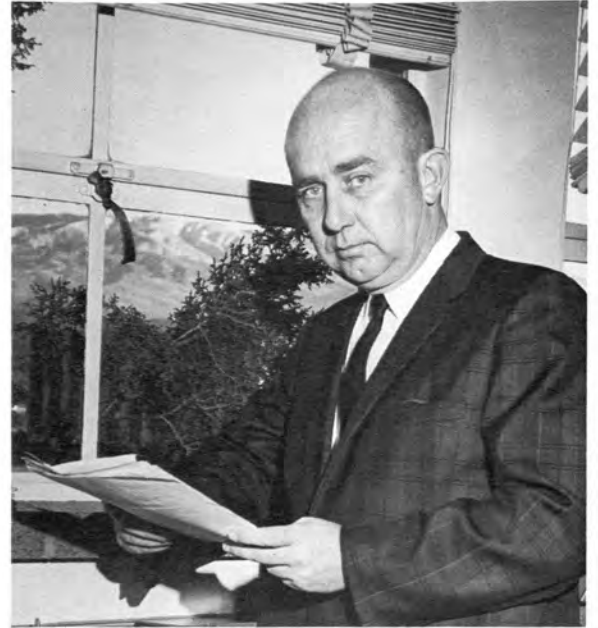


HERBERT W. RUNNER
Assistant to the Dean of Faculty
B.A., University of Redlands;
M.S., University of North Dakota

DIVISION CHAIRMEN



JOHN L. PHILLIPS, Jr.
Social Science



ROBERT E. ROSE
Business and Economics



DONALD J. OBEE
Life Science



WILLIAM E. SHANKWEILER
Humanities



JOSEPH B. SPULNIK
Physical Science