

JOSEPH B. SPULNIK

Chemistry; B.S., M.S., Ph.D., Oregon State College.



MARY D. BEDFORD

Library Science; B.A., Whitman College; M.S. (Ed.), University of Idaho; Washington State College; University of Washington; Catholic University, Washington, D. C.

HELEN MOORE

English; B.A., Drake University; M.A., University of Washington.



JOHN W. BOOTH

Education; B.S., University of Idaho; M.S., University of Idaho; Ed D., Stanford.

LESTER McCANN

Life Science; St. Thomas College; B.S., University of Minnesota; M.A., University of Washington; University of Utah.



LUCILLE T. FORTER

Voice; Bruneau College Conservatory; Chicago Musical College; Pupil of Herbert Witherspoon, Plunkett Greene, London; Idelle Patterson, New York; Charles Granville, Chicago; Charles Rowden, Los Angeles; Walter Golde, New York; Richard Hageman, Beverly Hills.

ELSIE M. BUCK

Mathematics; B.A., M.A., Ph.D. University of California; University of Chicago.



CONAN E. MATHEWS

Dean, Art; B.A., College of Idaho; Utah State Agricultural College; California School of Fine Arts; University of California; University of Denver; University of Utah.

GENEVIEVE TURNIPSEED

Eng. B.A., University of Iowa; M. A., Ed., Columbia University.



VERNON J. BECKWITH

Woodworking; B.S., McPherson College; Lewiston Normal; College of Idaho.



W. L. GOTTENBERG

Director of Student Affairs, Publicity, Journalism, and Spanish. Minot State Teachers College; St. Olaf College; B.A., University of North Dakota; M.A., University of Montana; University of Oregon; University of Washington; La Escuela Interamericana, Saltillo, Mexico.

CAPT. ALBERT R. GISH

Brass Instruments



M. A. LUND

Auto Mechanics.

WARREN ADELMANN

Engineering; University of Idaho; B.S., Oregon Agricultural.



VERN W. EDWARDS

Auto Body and Fender; University of Idaho, Southern Branch.

CLAUDE WALN

Sheet Metal Workshops; Idaho State College.



JOHN H. BEST

Orchestra, Cello and Theory; B.S., University of Idaho; M.A., Colorado State College of Education; Cello pupil of Elias Thrustman and Joseph Wetzels; Composition and theory pupil of J. DeForest Cline and Henry Trustman Ginsberg.

C. W. HAHN

Engineering; University of Nebraska; B.S., University of Colorado; Montana State College.



JAMES HOPPER

San Jose State, San Jose, California; Prof. Corrado Sarri, Florence, Italy; Pupil of Vincent J. Abato, Julliard School of Music, New York; Pupil of Hime Vosman, State University of Iowa.

ROBERT S. HUNTER

Vocational Education; B.S., Carnegie Institute of Technology; M.Ed., University of Pittsburg.

MARY T. HERSHEY

Director of Admissions and Records; B.A., University of Minnesota.



GEORGE C. BLANKLEY

Head Coach and Physical Education; B.A., College of Idaho; University of Idaho.

JOHN R. YOUNG

Business; B.Ed., Whitewater State Teachers College; M.A., University of Iowa.



KATHRYN E. MITCHELL

Violin; Institute of Musical Art; Pupil of Franz Mairecher; Studies with Louis Persinger and Henry Temianka.

CATHERINE VASQUEZ

Art; B.F.A. and graduate work, University of Washington; Art Students League, New York; Painting with Robert Brackman, Walter F. Isaacs; Lithography with Emilio Amero; Teachers College, Columbia University.



CARROLL J. MEYER

Piano; Elkader Junior College; B.M., University of Michigan; Pupil of Ether Leginska and Cecile de Horvath.

ROBERT DE NEUFVILLE

German and French; B.A., M.A., New College, Oxford; Dr. Jur, Marburg University; Columbia University.



ROBERT O. HATFIELD

Psychology; B.A., M.A., University of California.

ELEANOR SNODGRASS

Piano; Mus.B., Bethany College; Mus.M., American Conservatory of Music; Piano, Mrs. Josef Lhevinne and Julliard School of Music.



PAUL E. BAKER

Dean of Men; B.A., Trinity University; B.D., McCormick Seminary; S.T.B., Union Seminary; M.A., Columbia University; Ph.D., Columbia University.



LYLE SMITH

Coach and Physical Education; B.S.(Ed.), M.S.(Ed.), University of Idaho; On military leave.



ADA Y. HATCH

English; B.A., M.A., University of Idaho; University of California; University of Chicago; University of Washington; Toured Europe in 1950.



JEANNE G. STEARNS

Mathematics and Physics; B.S., M.S., Tulane University; University of Pittsburg; University of Colorado.



JAMES MOORE

History; B.A., M.A., Ph.D., University of California.



DONALD J. OBREE

Life Sciences; Kansas City University; B.A., M.A., Ph.D., University of Kansas.



HAZEL MARY ROE

Secretarial Science; B.A., M.A., University of Idaho; Northwestern University; University of Washington.



VINA J. BUSHBY

Secretarial Science; B.A., College of Idaho; M.S., Armstrong College; Oregon State College; San Jose State College.



J. ROY SCHWARTZ

English; B.S., M.A., University of Oregon; University of Utah.



HAROLD WENNSTROM

Drama, Speech and Radio; B.S.(Ed.), M.S.(Ed.), University of Idaho; University of Southern California.



FRANCES RUSSELL

Education; B.S., University of Michigan; Certificate of Library Science, University of Wisconsin Library School.

THELMA F. ALLISON

Home Economics; B.A.(H.Ec), Utah State Agricultural College; University of Utah; Brigham Young University; M.S.(H.Ec), Utah State Agricultural College.



J. RUSSELL LUDWIG

Chemistry; B.S. (Ch. E.), Newark College of Engineering; B.A., M.A., Seton Hall College.



JEAN CATHERIN

Physical Education for Women; B.A., University of California, University of Colorado.

CLISBY T. EDLFSEN

Business; B.A., College of Idaho; M.S. (Ed.), University of Idaho; Armstrong Business College, Berkeley, California; Stanford University.



RALPH ROGERS

Assistant Coach; Physical Education; B.S. (Ed.), College of Idaho; Summer 1951, University of Idaho.

C. GRIFFITH BRATT

Theory, Choir and Organ; Mus.M., Artist's Diploma in Organ, Peabody Conservatory of Music; A.A.G.O.; University of Baltimore; Johns Hopkins University; Choir pupil of Louis Robert, Ifor Jones, and F. Melius Christiansen; Organ pupil of Louis Robert, Charle Courboin, and Virgil Fox; Composition pupil of Franz Bornschein, Katherine Lucke, Howard Thatcher, and Gustave Strube; University of Utah.

Union Staff

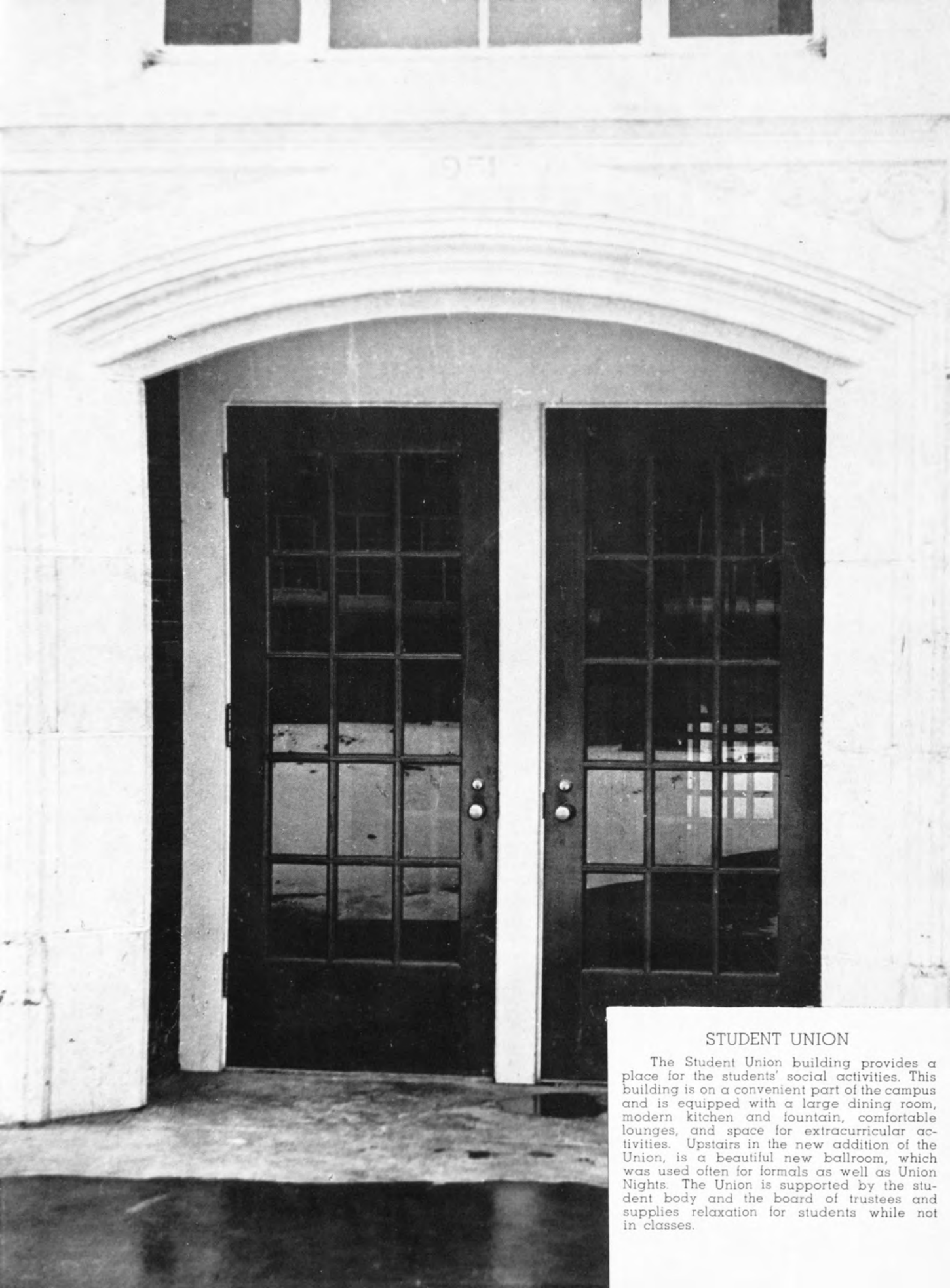


Left to right, back row: Ethel Hull, Helen Johnson, Garda Henderlider, Ruby Sassman, Elizabeth Crane. Front Row: Hattie Gesner, Carrie Johnson, Ida Porter

Custodians



Front Row, left to right: Dave Henderson, John Stanton, Elvah Hard, David Grout, Charles O. Brown. Back Row: Tom Gillam, Orville Knox, Clinton Waggoner, Sidney Waterhouse, Gavin Duncan.



STUDENT UNION

The Student Union building provides a place for the students' social activities. This building is on a convenient part of the campus and is equipped with a large dining room, modern kitchen and fountain, comfortable lounges, and space for extracurricular activities. Upstairs in the new addition of the Union, is a beautiful new ballroom, which was used often for formals as well as Union Nights. The Union is supported by the student body and the board of trustees and supplies relaxation for students while not in classes.