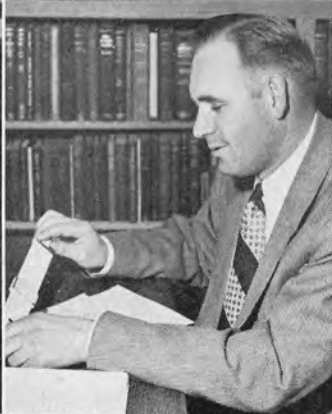




W. L. GOTTENBERG—Director of Student Affairs, Publicity and Journalism; Minot State Teachers College; St. Olaf College; B.A., University of North Dakota; M.A., University of Montana; University of Oregon; University of Washington.

HELEN MOORE—English; B.A., Drake University; University of Washington.



VINA J. BUSHBY—Secretarial Science; B.A., College of Idaho; M.S., Armstrong College; Oregon State College; San Jose State College.

C. W. HAHN—Engineering; University of Nebraska; B.S., University of Colorado.



CLISBY T. EDLEFSEN—Business; B.A., College of Idaho; M.S.(Ed.), University of Idaho; Armstrong Business College, Berkley, California.

MARY T. HERSHEY—Director of Admissions and Records; B.A., University of Minnesota.



ELAINE C. STRAWN—Business; B.A., University of Oregon; M.S., New York University.

PAUL E. BAKER—Dean of Men; B.A., Trinity University; B. D. McCormick Seminary; S.T.B., Union Seminary; M.A., Columbia University; Ph.D., Columbia University.



CONAN E. MATHEWS—Dean, Art; B.A., College of Idaho; Utah State Agricultural College; California School of Fine Arts; University of California; University of Denver.

ADA Y. HATCH—English; B.A., M.A., University of Idaho; University of California; University of Chicago; University of Washington.

VERN W. EDWARDS—Auto Body and Fender; University of Idaho, Southern Branch.



CAMILLE B. POWER—Spanish; B.A., James Millikin University; M.A., University of Illinois; Diplome, Universite de Poitiers; Institut d'Etudes Francaise de Touraine; University of Chicago; University of Mexico; University of Washington.



CATHERINE EVANS—Art; B.F.A. and graduate work University of Washington; Art Students League, New York; Painting with Robert Brackman, Walter F. Isaacs; lithography with Emilio Amero; Teacher's College, Columbia University.

JOHN R. YOUNG—Business; B.Ed., Whitewater State Teachers College; M.A., University of Iowa.



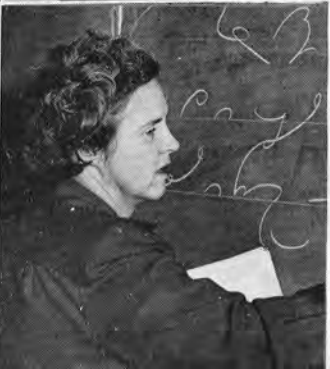
ACEL H. CHATBURN—Education and Guidance; B.A., College of Idaho; Albion Normal; University of Idaho; M.A., University of Colorado.

THELMA F. ALLISON—Home Economics; B.A.(H.Ec.) Utah State Agricultural College; University of Utah; Brigham Young University; M.S.(H.Ec.), Utah State Agricultural College.



JEANNE G. STEARNS—Mathematics and Physics; B.S., M.S., Tulane University; University of Pittsburg; University of Colorado.

LYLE SMITH—Coach and Physical Education; B.S. (Ed.), M.S.(Ed.), University of Idaho.



J. ROY SCHWARTZ—English; B.S., M.A., University of Oregon.

HAZEL MARY ROE—Secretarial Science; B.A., M.A., University of Idaho; Northwestern University.



LUCILLE T. FORTER—Voice; Brenau College Conservatory; Chicago Musical College; Pupil of Herbert Witherspoon, Plunkett Greene, London; Idelle Patterson, New York; Charles Granville, Chicago; Charles Rowden, Los Angeles; Walter Golde, New York; Richard Hageman, Beverly Hills.

KONSTANTIN EPP—Woodwinds and Brass; B.A., Ohio State University; Artist's Diploma in Oboe, Julliard School of Music; M.A. in Musicology, Columbia University; Student of Albert Stoessel, Rudolph Thomas, Louis Bostelmann, Paul H. Long, Dr. Eric Hartzmann, Dr. Manfred Bukofzer, Douglas Moore, Otto Luening, Bruno La Bate and Michel Nazzi.



VERNON J. BECKWITH—Woodworking; B.S., McPherson College; Lewistown Normal; College of Idaho.

JOSEPH B. SPULNIK—Chemistry; B.S., M.S., Ph.D., Oregon State College.



DONALD J. OBEE—Life Sciences; Kansas City University; B.A., M.A., Ph.D., University of Kansas.

GEORGE C. BLANKLEY—Basketball Coach and Physical Education; B.A., College of Idaho; University of Idaho.



FRANK M. FAHEY—History; B.A., University of Washington; M.A., Stanford University.

E. E. KIDDER—Engineering Drawing; B.C.E., University of Maine.



C. GRIFFITH BRATT—Theory, Choir, and Organ; Mus.M., Artist's Diploma in Organ, Peabody Conservatory of Music; A.A.G.O., University of Baltimore; Johns Hopkins University; Choir pupil of Louis Robert, Ifor Jones, and F. Melius Christiansen; Organ pupil of Louis Robert, Charle Courboin, and Virgil Fox; composition pupil of Franz Bornschein, Katherine Lucke, Howard Thatcher, and Gustave Strube.

HAROLD WENNSTROM—Drama, Speech and Radio; B.S.(Ed.), M.S.(Ed.), University of Idaho; University of Southern California.

ROBERT DE NEUFVILLE—German; B.A., M.A., New College, Oxford; Dr. Jur., Marburg University; Geneva University; Berlin University; Columbia University.



WILFORD L. HOUGHTON—Machine Shop; Puget Sound Navy Yard Machine School; Seattle-Tacoma Shipbuilders.



JEAN CATHERIN—Physical Education for Women; B.A., University of California.



ROBERT O. HATFIELD—Psychology; B.A., M.A., University of California.



JAMES P. GILLIGAN—Life Sciences; Washburn College; B.S.F., M.F., School of Forestry and Conservation, University of Michigan.



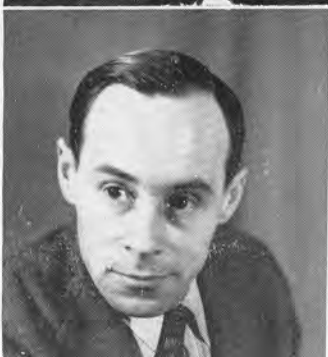
ELSIE M. BUCK—Mathematics; B.A., M.A., Ph.D., University of California; University of Chicago.



ELEANOR SNODGRASS—Piano; Mus.B., Bethany College; Mus.M., American Conservatory of Music; Piano, Mrs. Josef Lhevinne and Julliard School of Music.



CHARLES ROSS—Voice; Phillips University; Studied under Percy Rector Stephens, New York; John C. Wilcox, Denver; Pietro Cimini, Hollywood; Harold Hurlbut, Hollywood; Helen Omeron, Los Angeles.



J. RUSSELL LUDWIG—Chemistry; B.S.(Ch.E.), Newark College of Engineering; B.A., M.A., Seton Hall College.



KATHRYN E. MITCHELL—Violin; Institute of Musical Art; Pupil of Franz Mairecher; Studies with Louis Persinger and Henri Temianka.



MARY D. BEDFORD—Library Science; B.A., Whitman College; M.S.(Ed.), University of Idaho; Washington State College; University of Washington.



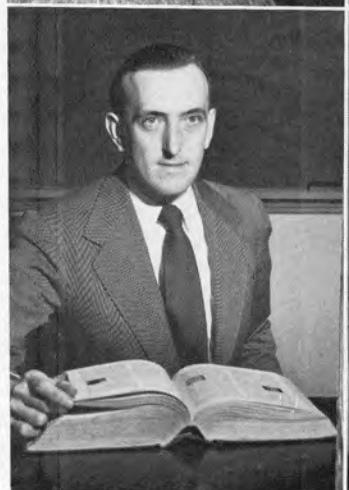
JOHN H. BEST—Orchestra, Cello and Theory; B.S., University of Idaho; M.A., Colorado State College of Education; Cello pupil of Elias Trustman and Joseph Wetzels; Composition and theory pupil of J. DeForest Cline and Henry Trustman Ginsburg.



ROBERT S. HUNTER—Vocational Education; B.S., Carnegie Institute of Technology; M.Ed., University of Pittsburg.



CARROLL J. MEYER—Piano; Elkader Junior College; B.M., University of Michigan; Pupil of Ethel Leginska and Cecile de Horvath.



FRANK C. LUCAS—Boise Junior College; M.A., University of Chicago.



KENNETH J. WILLIAMS—Business; B.S., University of Oregon.



Our Custodians: left to right, Charles Brown, David Henderson, Clint Waggoner, Howard Palmer, Tom Gillian, John Stanton, Elva Hard, David Grout, Orville Knox, Chester Scott, Gavin Duncan.



This is our Union where the students spend their free time from classes. Also every Friday evening a dance is held here under various club supervision, providing there is not another school function.