

# Raising Awareness for Domestic Abuse Victims



Bree Hayes

# Introduction

- Multidisciplinary Studies Major with an Emphasis in Leadership and Conflict Management
- Background in early childhood education
  
- Interested in social services and working with the public



# The Problem

- How can we better support men, women, and children that have fallen victim to domestic abuse, and how to stop the cycles of abuse from continuing to occur?
- My Either/Or Statement
- Stakeholders: The victims of abuse, children, the abusers, professors, community, and myself

# My Approach

- Service Learning Approach
- I volunteered time at the Faces of Hope Center in Boise
- An interview with a domestic abuse survivor
- I researched the problem to find supporting information

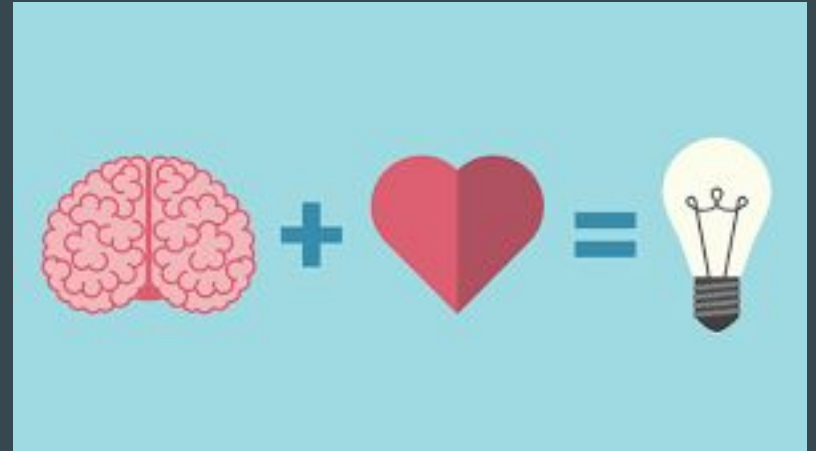


# Results

- As a society, we need better resources in place for victims
  - Affordable public housing
  - Assistance for organizations
  - Signs of abuse
  - Not easy to “just” leave
- Stronger schooling, public health, and counseling
- Assistance for those struggling with mental health illnesses
- Awareness

# Emotional Intelligence

- I am a caring and empathetic person that values the feelings and voices of others
- I love to help others, and want to make a positive impact
- We all know someone that is a victim or a survivor



# Creative Thinking

- I didn't discount any possible solution
- I welcomed any and all twists and turns
- I took a comprehensive approach
  - The victims
  - The abusers
  - The centers/organizations
  - The community

# Innovative Thinking

- An innovative solution: one that accounts for all of the stakeholders
- A diverse selection of perspectives
- Solution that is fluid and ever-changing





# Conclusion

- The problem: supporting victims of abuse and ending cycles of abuse
- The approach: service-learning option
- The results

# References

Both, L. M., Favaretto, T. C., & Freitas, L. (2019). *Cycle of violence in women victims of domestic violence: Qualitative analysis of OPD 2 interview*. *Brain and behavior*, 9(11), e01430.  
<https://www.ncbi.nlm.nih.gov/pmc/articles/PMC6851812/>

Faces of Hope, Boise. (2022.) One-Stop Triage and Support Center.  
<https://www.facesofhopevictimcenter.org>

Steiner, Leslie Morgan. (2013.) *Why Domestic Violence Victims Don't Leave*. TED Talk.  
<https://www.youtube.com/watch?v=V1yW5IsnSjo>

# Get Involved

<https://www.facesofhopevictimcenter.org/give>

<https://www.wcaboise.org/give-support/>

<https://boiserm.org/hp-give/>

<https://interfaithsanctuary.org/get-to-know-me/#gtkm-donate>