



**LES BOIS**  
**1957**



1957

les bois

• *the staff* •

Ann Scott, editor

Jan Obenauer, assistant editor

Rebecca Monteith, business manager

Anna Lowwill, art editor



• *dedication* •

**F**or her tireless and unselfish endeavors in helping to educate the young men and young women who have attended Boise Junior College in the years since its founding; for her high standards of academic excellence spiced by a sense of humor that has made this quality delightful to students and faculty alike; and for her simplicity of living that will not accept show but quietly goes about her life taking each day in stride without fanfare or self-persecution. We, the students of Boise Junior College, gratefully dedicate this 1957 LES BOIS to Elsie McFarland Buck.

# *administration*

**E**very student, during his two-year study here, has business in the offices at the northwest end of the building. Not only do these rooms offer guidance, but they also have positions for student employment.

From the President's office comes the foremat for college rule and the endeavors for inter-school good will. Across the hall, the Vice-President works with student activities and administration of the grounds.

Next to the President's office, the people of the general office keep records of school maintenance and of student enrollment. The deans, faculty, business office, union staff, and custodians all cooperate to keep the clock turning smoothly for the students.

*. board of trustees .*



ED D. BAIRD



OSCAR W. WORTHWINE



R. S. OVERSTREET



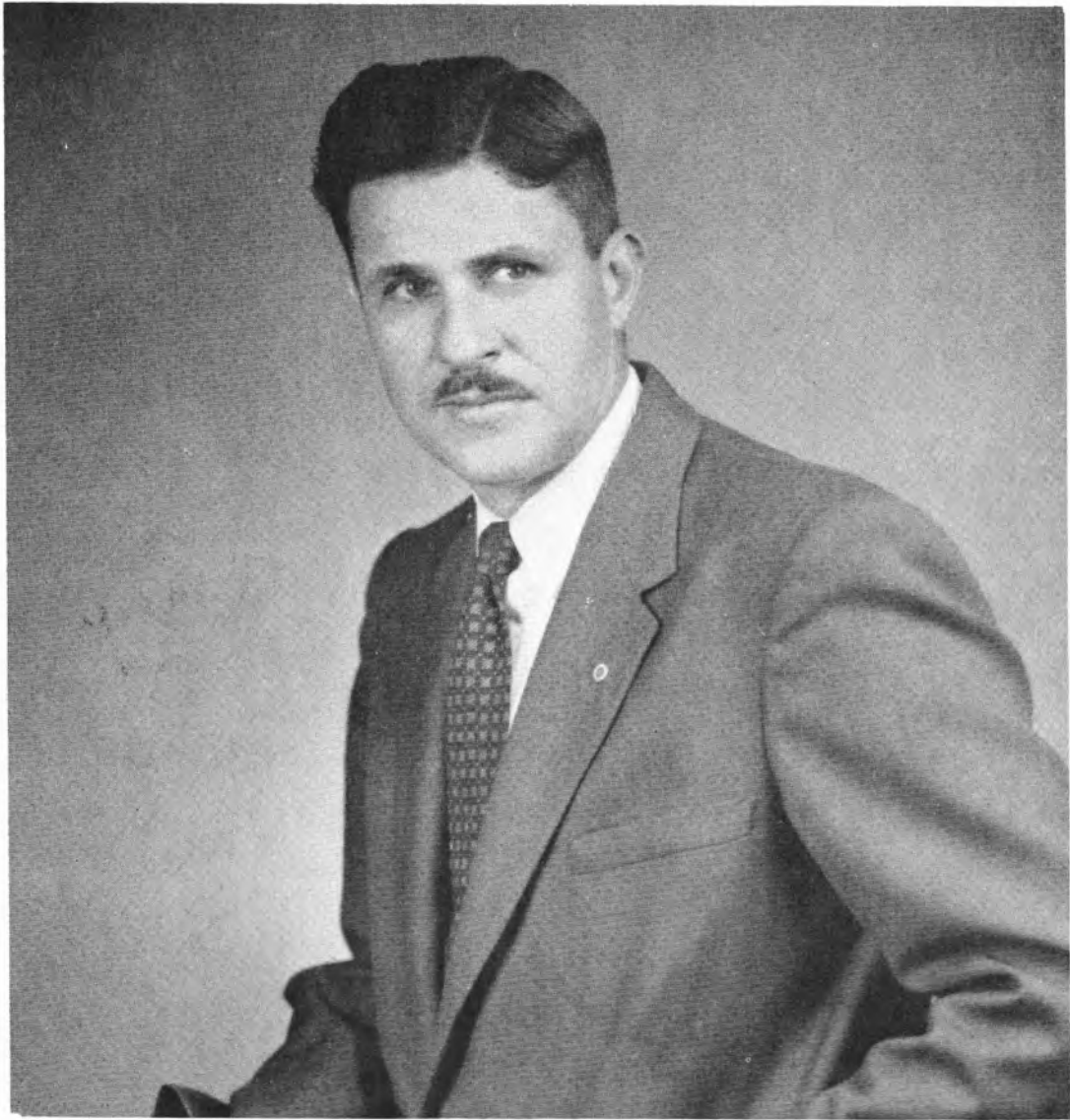
ARTHUR H. CAINE



DON F. DALY



CLYDE F. POTTER



EUGENE B. CHAFFEE

• *president* •



W. L. GOTTENBERG  
VICE-PRESIDENT



ACEL H. CHATBURN  
DEAN OF FACULTY



GENEVIEVE TURNIPSEED  
DEAN OF WOMEN



PAUL E. BAKER  
DEAN OF MEN

• general office •

BERNICE RHODES  
House mother of  
Morrison



HATTIE GESNER  
Director of  
Student Union



HOWARD ROWE  
Registrar



BEVERLY DAVIS

ONA POUNDS  
ELMA GOCKLEY

CHARLENE ROGERS  
MARTHA FENTON



GORDON R. ROSS  
Assistant to  
Vice President

MILDRED CECIL  
Assistant to director  
of student union



VUNE LARSEN  
House mother of  
Driscoll



*. business office .*



KATHRYN ETTER  
CHIEF ACCOUNTANT

CLYDE F. POTTER  
BUSINESS MANAGER



ELEANOR YOUNG  
SECRETARY TO BUSINESS MANAGER

EDITH PECORA  
CASHIER