

Boise State University

**ScholarWorks**

---

Library Faculty Publications and Presentations

The Albertsons Library

---

3-29-2023

## **The Campus Research Data Management Landscape**

Ellie Dworak

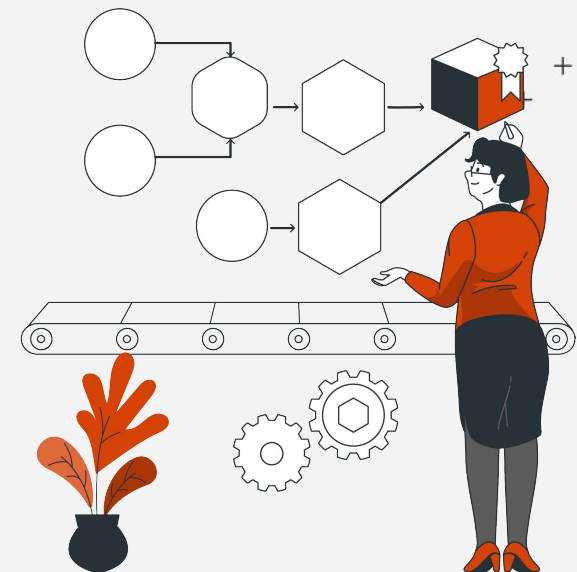
*Boise State University*

---

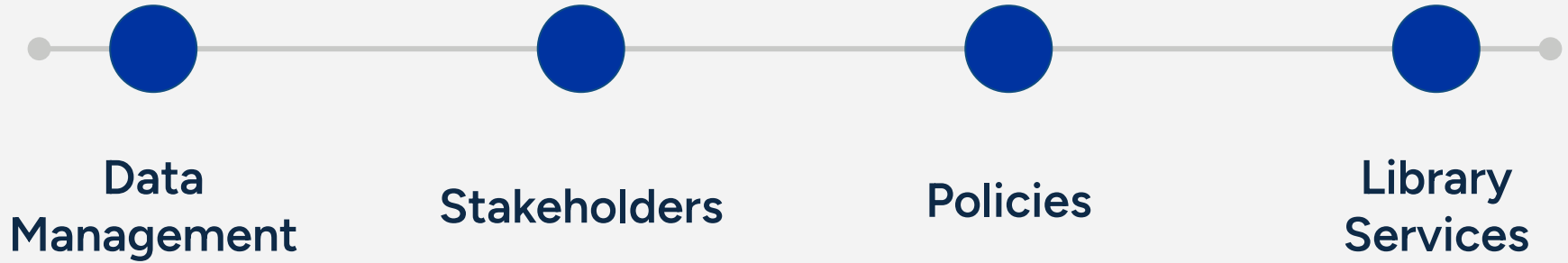
Presented at Research Computing Days 2023, Boise State University, Boise, Idaho.

# THE CAMPUS **RESEARCH** **DATA MANAGEMENT** LANDSCAPE

Ellie Dworak  
Research Data Librarian  
Albertsons Library

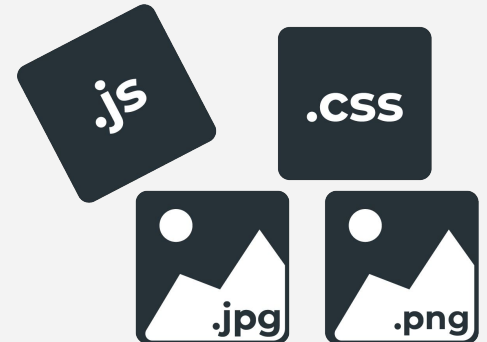


# AGENDA



# DATA MANAGEMENT **OVERVIEW**

The **organization, storage, preservation,**  
and **sharing** of information



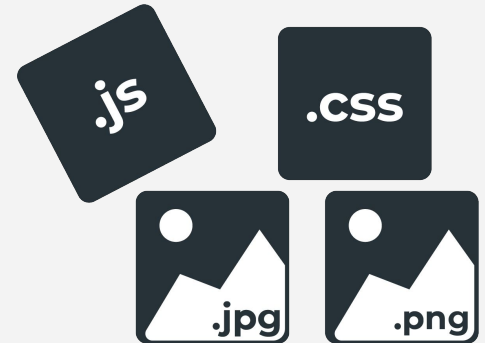
# RESEARCH DATA DEFINITION

The **recorded factual material** commonly accepted in the scientific community as **necessary to validate research findings**.

Includes:

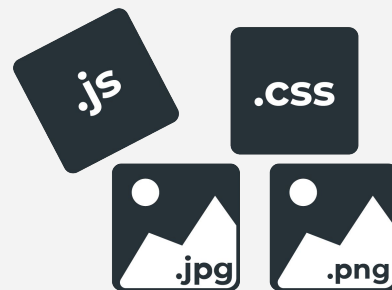
- Metadata
- Includes educational components

Code of Federal Regulations (2 CFR 215.36)



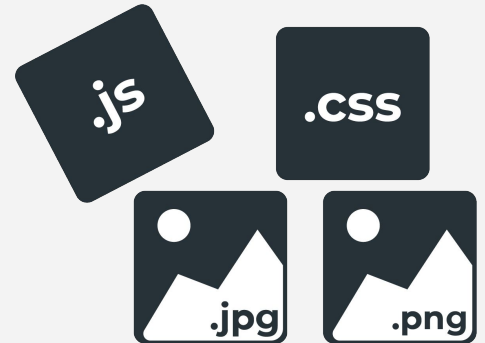
# Dear Colleague Letter: Effective Practices for Making Research Data Discoverable and Citable (Data Sharing)

Datasets underpinning published research findings are expected to be **shared** with other researchers, at no more than **incremental cost** and within a **reasonable time**.

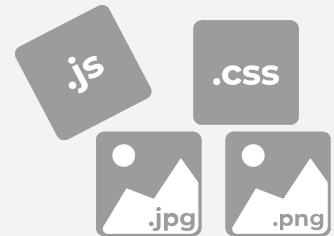


# RESEARCH DATA MANAGEMENT **OVERVIEW**

The **organization, storage, preservation,**  
and **sharing** of data collected and used in a  
research project.



# Why is **data** **management** important?





# DATA HORROR STORY

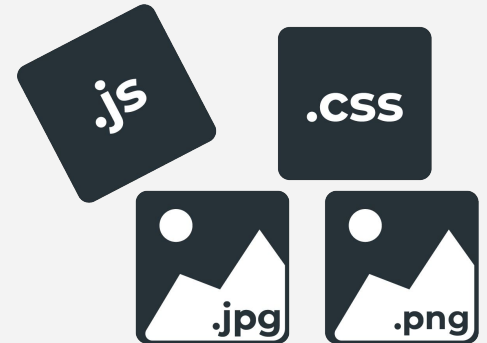
Authors couldn't find a patient to give consent for case report.

**Then the patient found the report.**

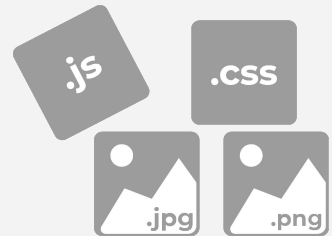


# DATA HORROR STORY

Article pulled from the Journal of Psychiatric Research because the authors **analyzed the wrong data.**

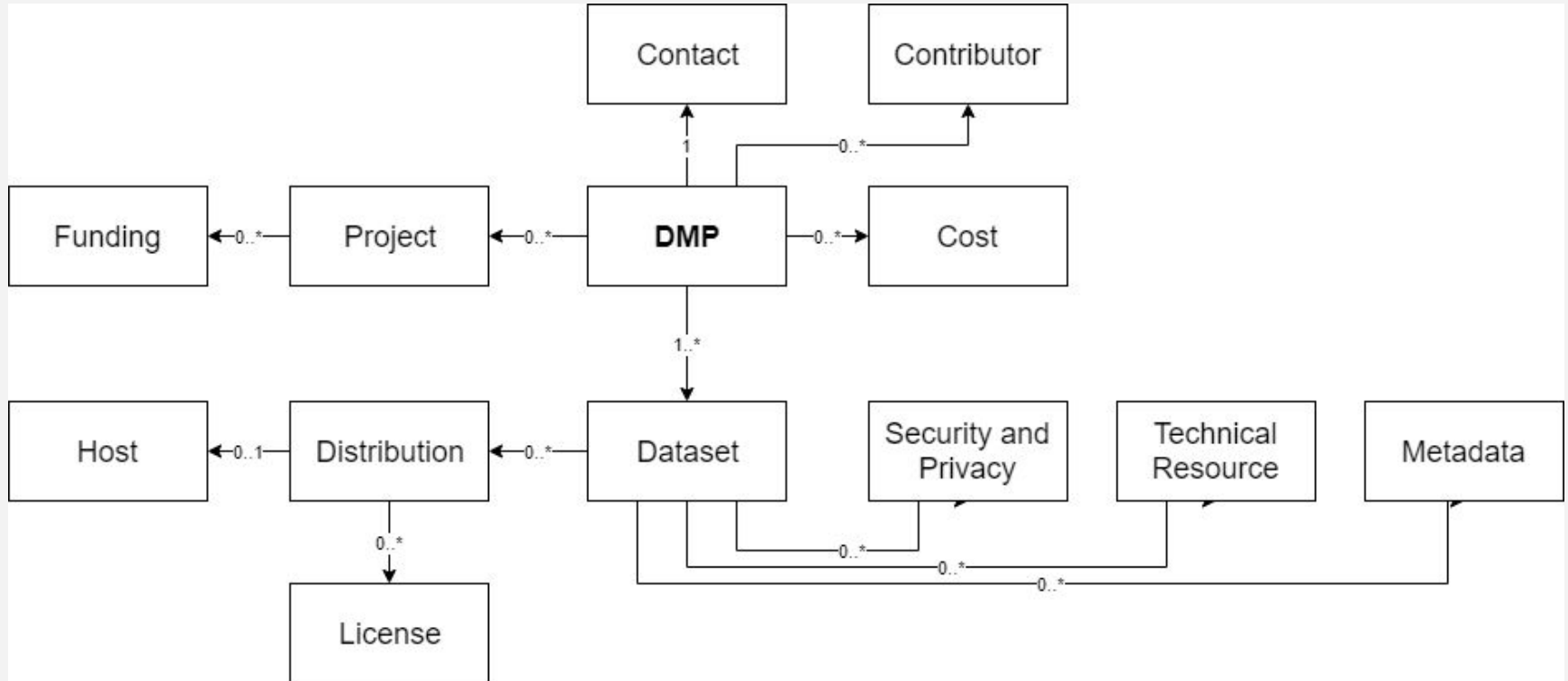


# MACHINE ACTIONABLE DATA MANAGEMENT PLANS





# RDA DMP COMMON STANDARD



```
{
  "dmp": {
    "title": "Estimation DMP",
    "description": "DOI pre-booked for data, it's size is
estimated",
    "created": "2018-07-23T10:10:23.6",
    "modified": "2019-02-22T15:10:56.9",
    "project": [],
    "contact": {
      "mbox": "TMiksa@sba-research.org",
      "name": "Tomasz Miksa",
      "contact_id": {
        "identifier": "https://orcid.org/0000-0000-
0000-0000",
        "type": "orcid"
      }
    }
  },
}
```

The Division of Earth Sciences requires that full data sets, derived data products, software, and physical collections must be made publicly accessible within two years of final collection.

**B***I*

Save

Comments &amp; Guidance

Guidance

Comments

NSF

Boise State

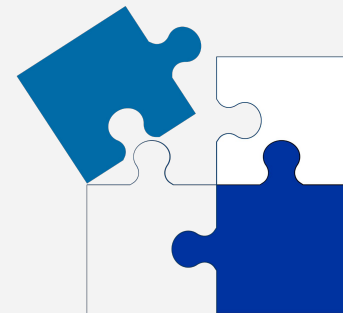
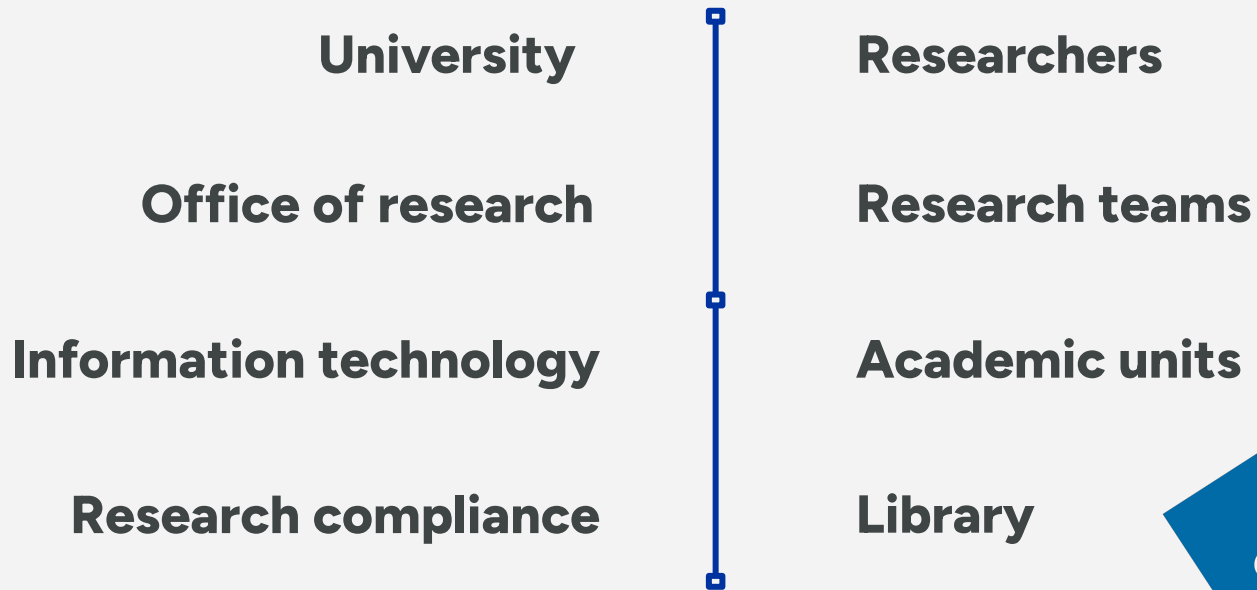
DMPTool

- [NSF-EAR Division Data Sharing Policy and Appendix](#)
- [NSF Proposal & Award Policies & Procedures Guide \(PAPPG\)](#)
- [NSF Frequently Asked Questions \(FAQs\) for Public Access](#)

**DATA MANAGEMENT IS  
NOT JUST FOR THE  
HARD SCIENCES**



# STAKEHOLDERS & CONCERNS



# CONCERNS: **UNIVERSITY**

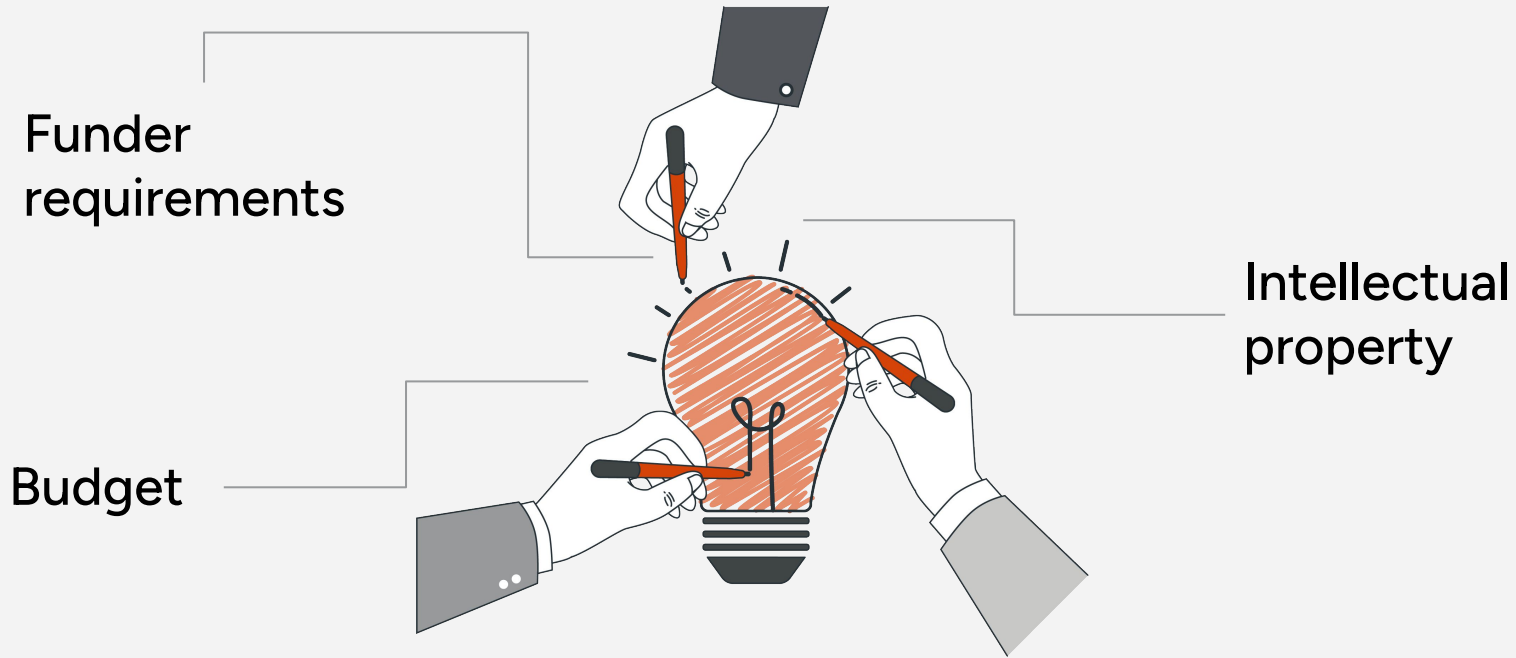
Return on  
investment

Public good

Regulatory and  
funder compliance



# CONCERNS: OFFICE OF RESEARCH



# CONCERNS: **RESEARCH COMPLIANCE**

Ethical  
responsibilities



Regulatory  
compliance

# CONSIDERATIONS



Communication is key

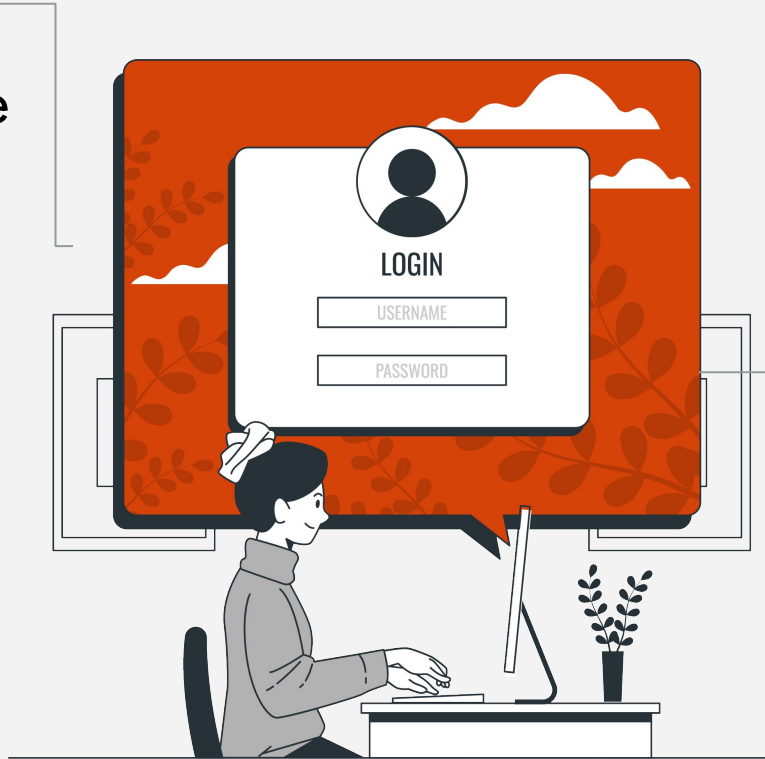
## RESEARCH COMPLIANCE

# CONCERNS: INFORMATION TECHNOLOGY

Cyberinfrastructure

Data retention

Cost models



# CONCERNS: **RESEARCHERS**



# CONSIDERATIONS

## RESEARCH TEAMS



Daily tasks of data  
management

Communication

## RESEARCHERS



# CONSIDERATIONS OUTSIDE VENDORS



Data management  
and contracts

## RESEARCHERS

# CONCERNS: **ACADEMIC UNITS**

Researcher support



Communication

# CONCERNS: **LIBRARY**

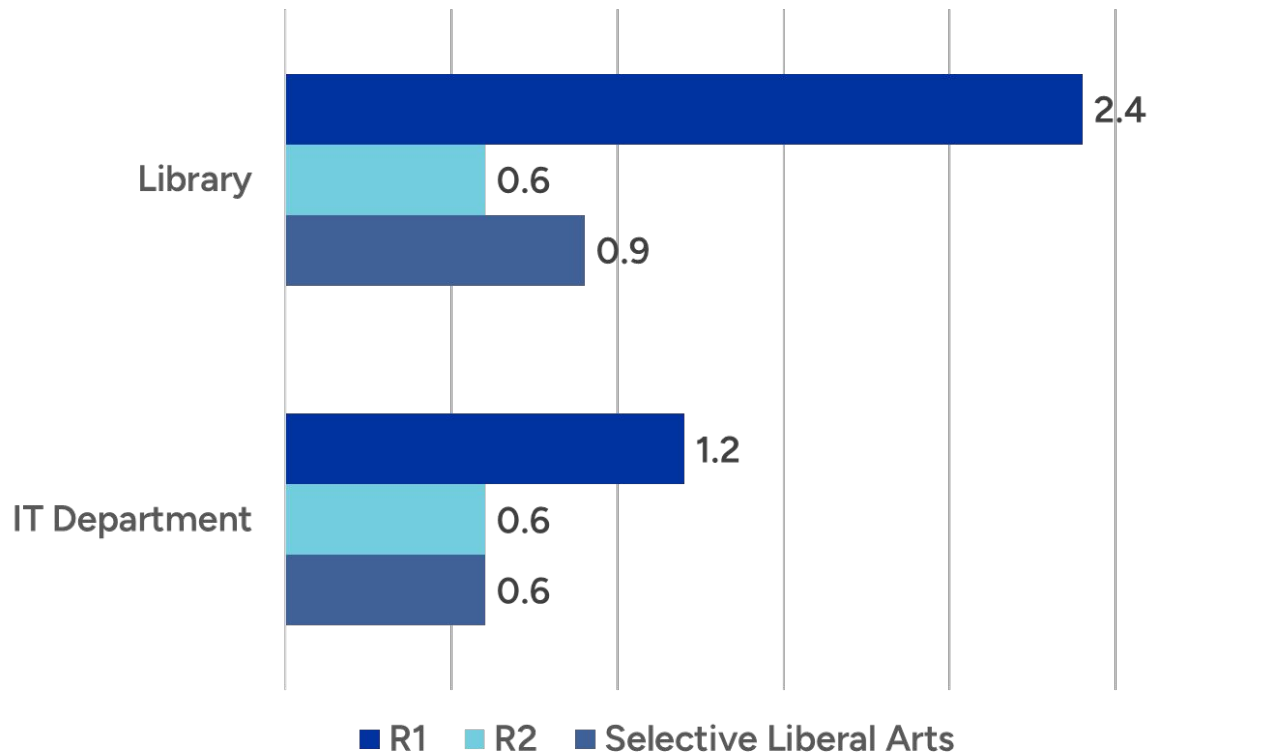
Funder and  
program  
requirements

Data preservation  
and curation



Open access and  
data sharing

# AVERAGE NUMBER OF RESEARCH DATA SERVICES



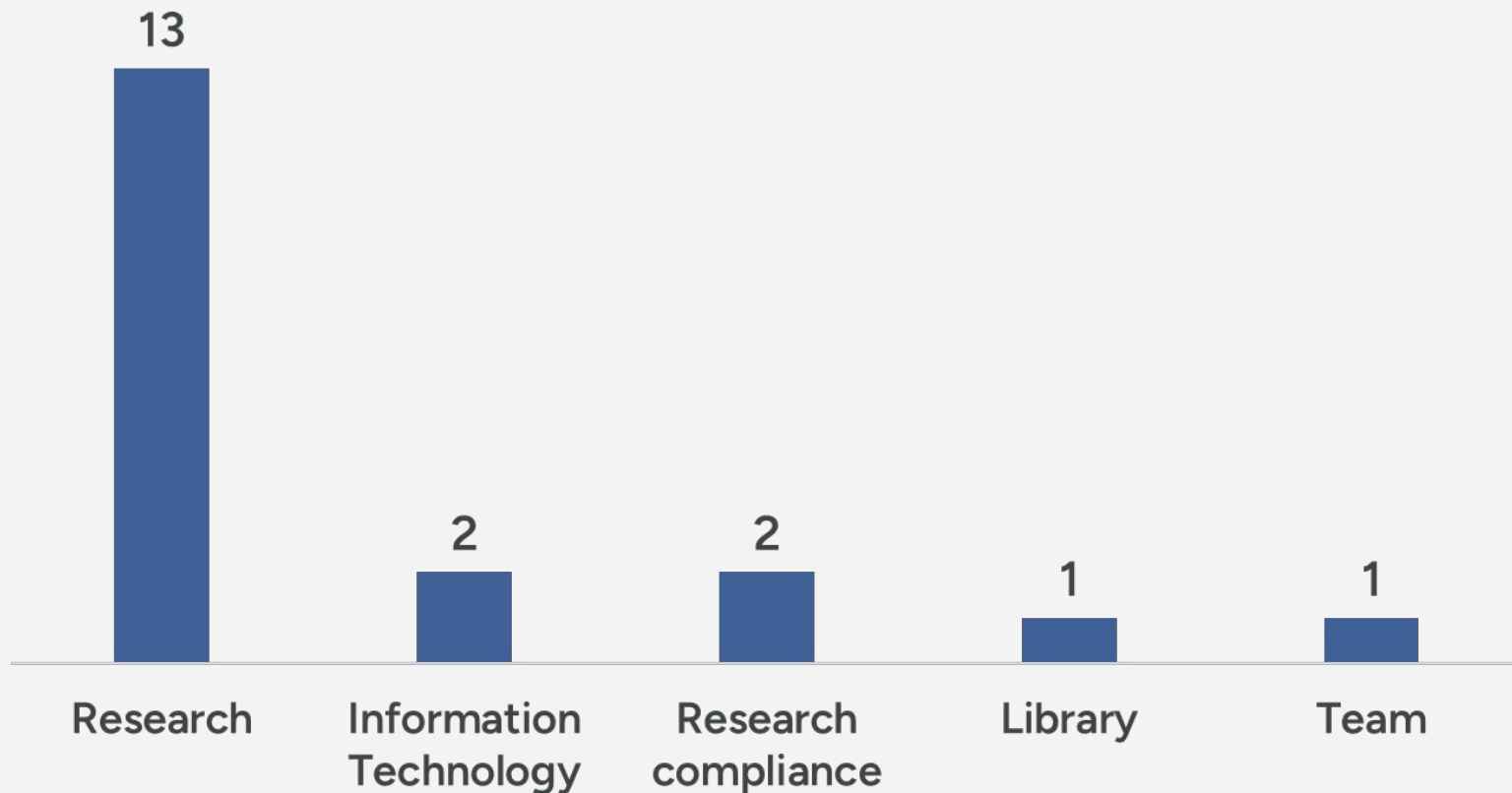
Source: ITHAKA S+R (2020), [Research Data Services in US Higher Education](#).

# **DATA MANAGEMENT POLICIES AT US RESEARCH INSTITUTIONS**

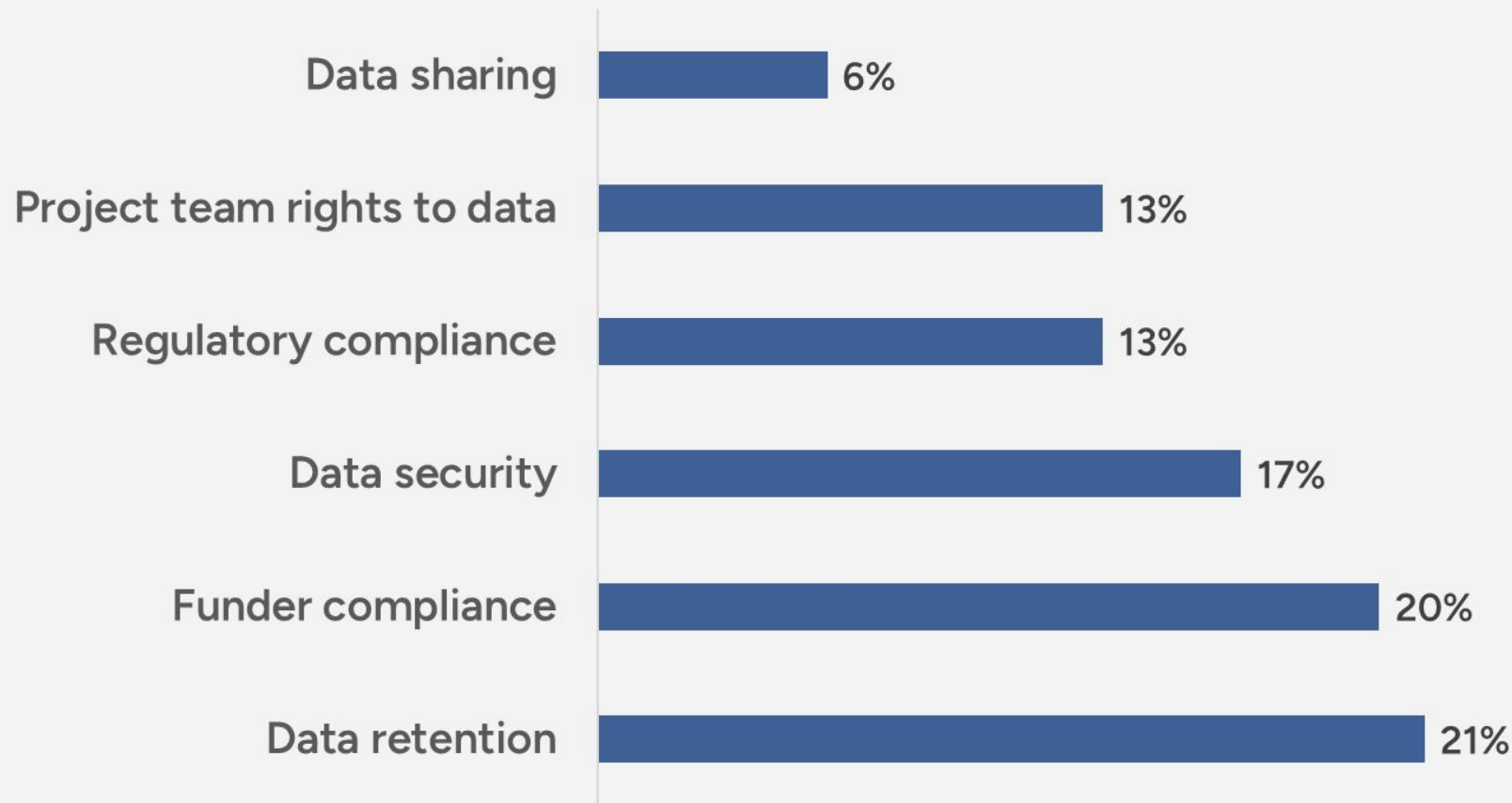
**NO - 28**

**YES - 20**

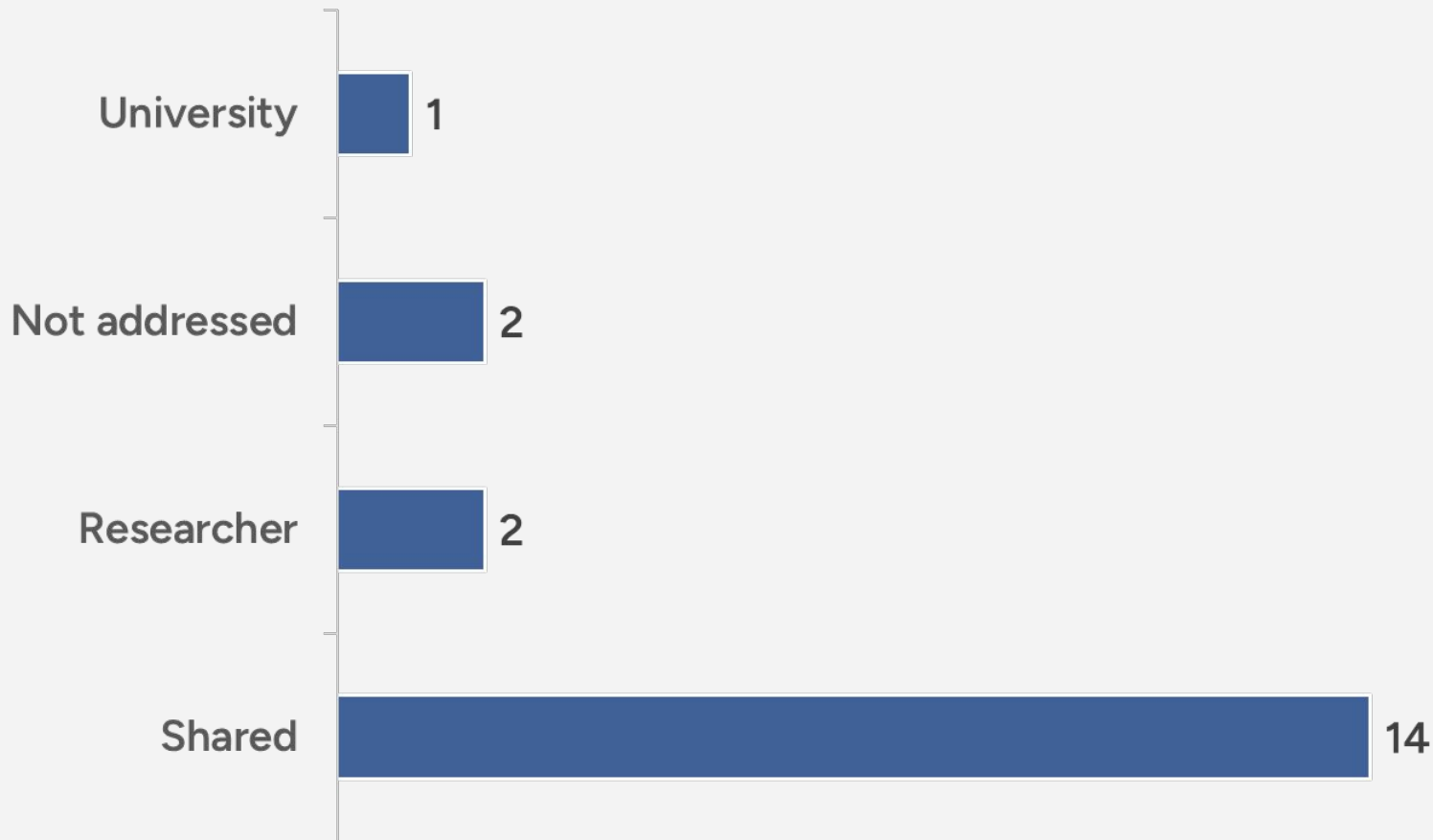
# RESPONSIBILITY FOR RESEARCH DATA MANAGEMENT



# TOPICS COVERED IN POLICIES



# WHO OWNS RESEARCH DATA?





# RESEARCH DATA SERVICES AT **ALBERTSONS LIBRARY**

- Data management planning and consultations
- Costing for data management
- ScholarWorks—data preservation and curation
- Questions about copyright and license agreements
- Research impact and altmetrics consultations
- Help locating datasets



# REFERENCES AND FURTHER READING

- Code of Federal Regulations (2 CFR 215.36)
- Dear Colleague Letter: Effective Practices for Making Research Data Discoverable and Citable (Data Sharing)
- Defining Research Data
- Introduction to Machine Actionable DMPs
- RDA DMP Common Standard for machine-actionable Data Management Plans
- Research Data Services in US Higher Education
- Starting the Conversation: University-wide Research Data Management Policy
- Ten principles for machine-actionable data management plans

**THANK YOU!**

**[elliedworak@boisestate.edu](mailto:elliedworak@boisestate.edu)**

# CREDITS

- Slide theme by Slidesgo
- Illustrations modified from Storyset