

2022

Transportation Safety in Boise, Idaho: Reaching Vision Zero

Aisha Kayed
Boise State University

Lantz McGinnis-Brown
Boise State University

Vanessa Crossgrove Fry
Boise State University

TRANSPORTATION SAFETY IN BOISE, IDAHO

REACHING VISION ZERO

TRANSPORTATION SYSTEM SAFETY IS A PUBLIC HEALTH ISSUE

Vision Zero is a strategy to eliminate all traffic fatalities and severe injuries, while increasing safe, healthy, equitable mobility for all. Its proactive, preventative approach prioritizes traffic safety as a public health issue in order to prevent traffic injuries and fatalities. However, crashes are often perceived as isolated incidents caused by human errors, rather than being viewed collectively. Examining the dynamics related to crash fatalities and severe injuries through a systems approach can enable identification of overarching safety issues and lead City of Boise to address systemic faults that result in negative outcomes.


EXAMINING FATAL AND INCAPACITATING CRASHES

125
FATAL
CRASHES

1,914
INCAPACITATING
CRASHES

27% OF CRASHES
INVOLVE
YOUNG ADULTS
18-28 YRS OLD

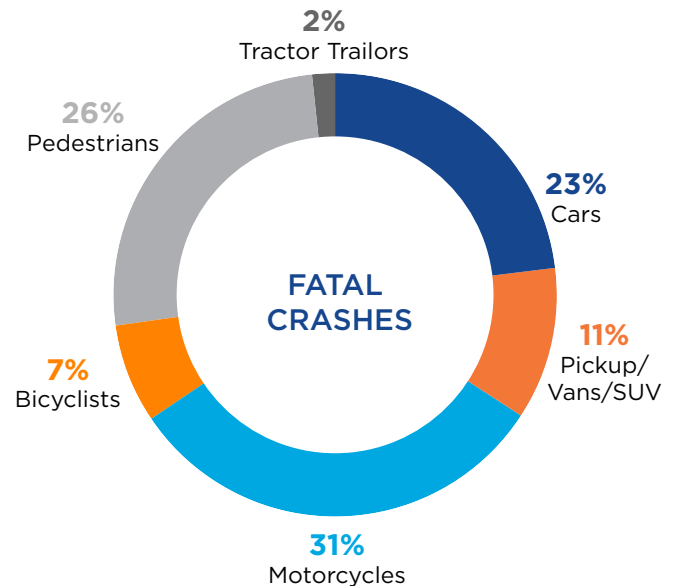
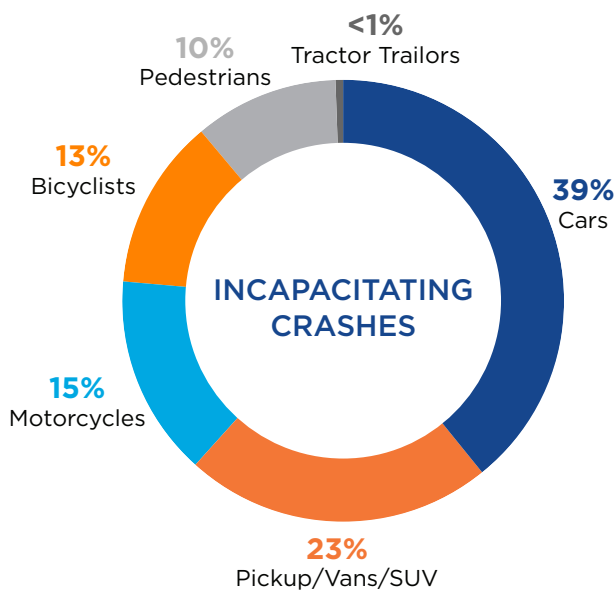
43% OF CRASHES
ARE ON
PRINCIPAL
ARTERIAL
ROADS



52%
OF CRASHES
TAKE PLACE IN
INTERSECTIONS

TIMES
MOST
CRASHES
OCCUR **7-8am**
3-5pm

2005-2020 BY THE NUMBERS



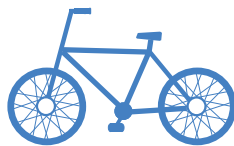
CONTRIBUTING CIRCUMSTANCES

MOTOR VEHICLE CRASHES



50% in intersections
62% going straight
16% inattention

BICYCLISTS CRASHES



65% in intersections
31% traveling with traffic
40% not wearing helmets

PEDESTRIAN CRASHES



58% in intersections
38% walking in crosswalks
49% traffic signal related

MOVING TOWARD SAFETY

When compared to the traditional approach to road safety, Vision Zero takes a proactive, Safe Systems approach to addresses systemic faults in a community's transportation system.

TRADITIONAL APPROACH

Traffic deaths are **INEVITABLE**

PERFECT human behavior

Prevent **COLLISIONS**

INDIVIDUAL responsibility

Saving lives is **EXPENSIVE**

VISION ZERO

Traffic deaths are **PREVENTABLE**

Integrating **HUMAN FAILURE** in approach

Prevent **FATAL** and **SEVERE CRASHES**

SYSTEMS approach

Saving lives **SAVES RESOURCES**

Source: Vision Zero Network

CONCLUSION

Intersections are the main issue area for all fatal and severe crashes. Pedestrians are most vulnerable when crossing in a crosswalk at a traffic signal while bicyclists traveling with traffic and crossing at intersections are most vulnerable. Motorists experiencing fatal or severe crashes are generally traveling straight with inattention, alcohol impairment, and failure to yield being the greatest contributing crash factors. By examining these and other underlying issues associated with fatal and severe injury crashes, City of Boise can identify and address systemic transportation system faults and work to reduce and eliminate future crashes.



BOISE STATE UNIVERSITY
IDAHO POLICY INSTITUTE

Aisha Kayed, Research Assistant
Lantz McGinnis-Brown, Research Associate
Vanessa Crossgrove Fry, PhD, Interim Director

2005-2020 data was utilized for this report. All underlying data and citations are available at boisestate.edu/sps-ipi/