

1-1-2017

Lighting Section: Osborne Path

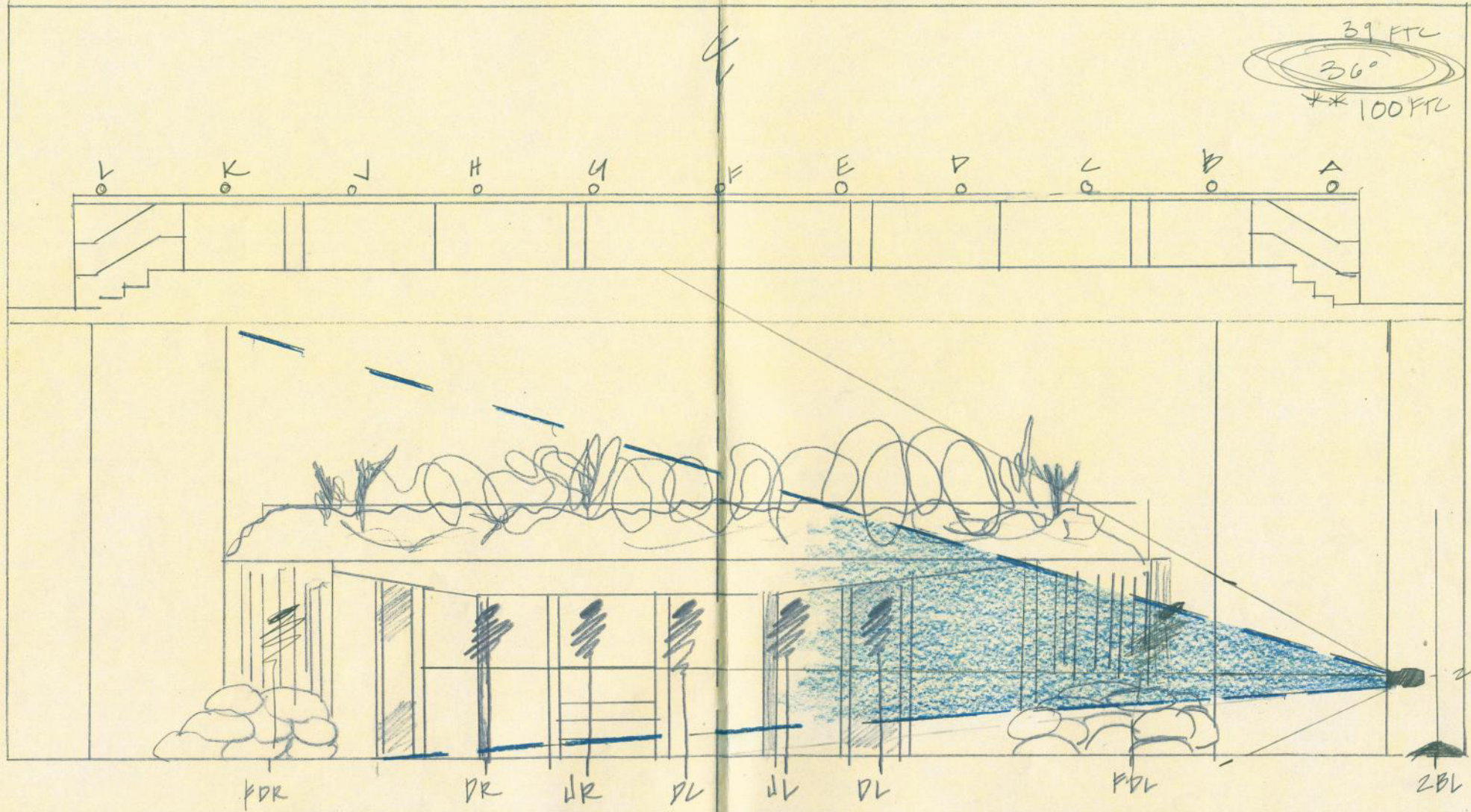
Brandon Washington
Boise State University

"VE" FRONT ELEVATION

"OSBORNE
PATH"
50"

ABLE TO CROSS
ENTIRE SPACE

39 FT
36°
** 100 FT



4'-6"
FROM
6'-0" TO
TO GR-
OUTLINE