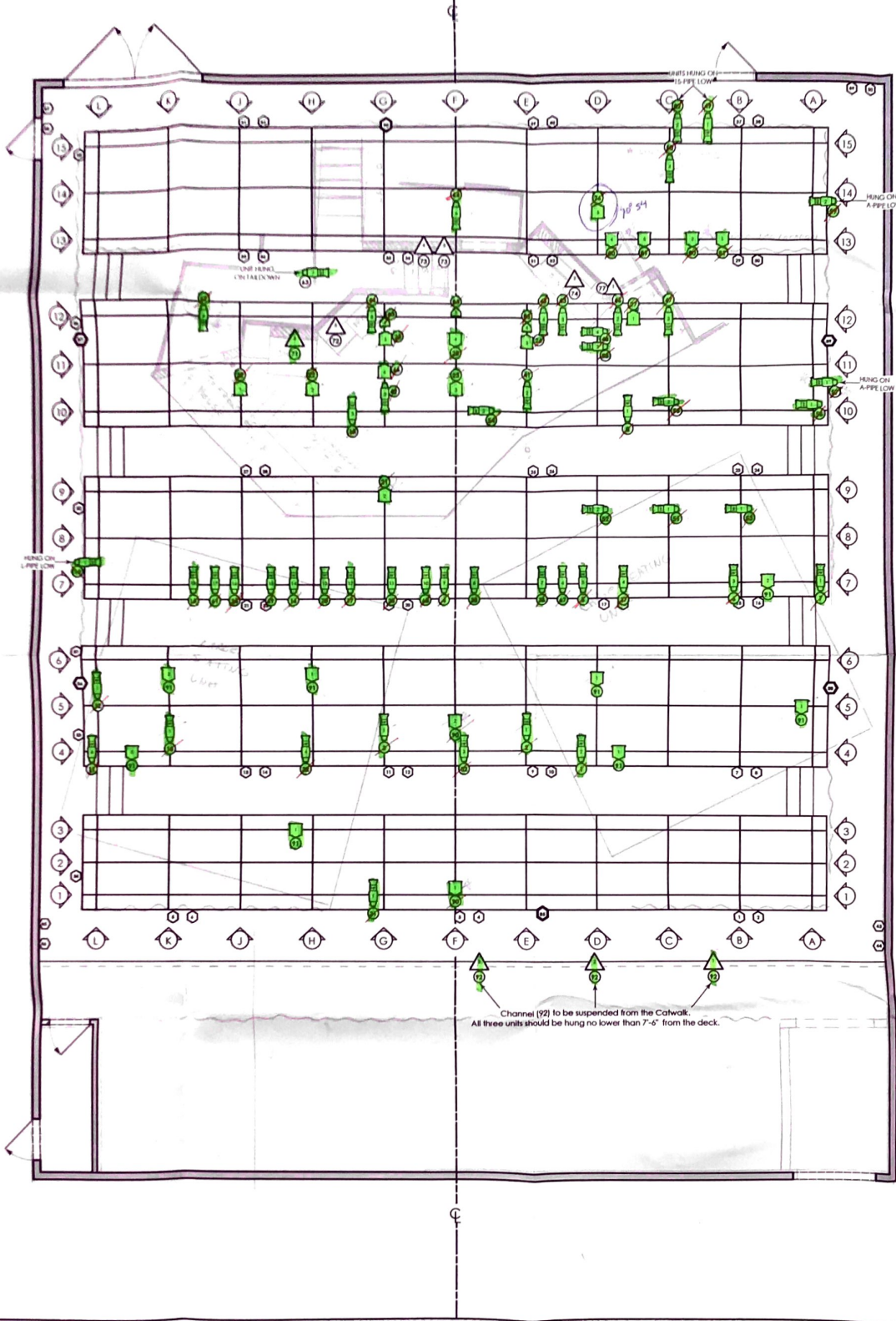


1-1-2016

Light Plot

Brandon Washington
Boise State University

Raquel Davis
Boise State University



INSTRUMENT KEY

- 6" Fresnel @750w
- ETC Panel @575w
- ▭ ETC Source 4 19° @575w
- ▭ ETC Source 4 26° @575w
- ▭ ETC Source 4 36° @575w
- ▭ ETC Source 4 50° @575w
- ▭ ETC Source 4 70° @575w
- △ Practical @Misc. Wattage

TYPICAL UNIT



HOUSE CIRCUITS

- 2.4 kW
- 6 kW

△	TECH	11.01.2016
C	PREPARATION	10.26.2016
B	REVISION # 1	10.24.2016
A	PLOT REVIEW	10.23.2016
REV	REVISION	DATE

GENERAL NOTES

- Refer to Paperwork for all color and accessory information.
- Hang all units in orientation as shown.
- All units and accessories to have safety cables.
- Hang all units with Gel Clip pointing up.
- Hang all Fresnels with lamp at full spot.
- Discuss all units/practicals mounted on scenery with both Raquel Davis and Brandon Washington.
- Discuss cable runs for all ground units and practicals with Fred Hansen.
- Please have Blackwrap, Black Tac and spare R132 and R119 on hand at focus.
- Provide run lights as needed.

CRIMES OF THE HEART
BY BETH HENLEY

BOISE STATE UNIVERSITY
DEPARTMENT OF THEATRE ARTS
DIRECTED BY: ANN PRICE
LIGHTING DESIGNED BY: RAQUEL DAVIS
BRANDON WASHINGTON
SCENERY DESIGNED BY: MIKE BALTZELL
PRODUCTION ELECTRICIAN: FRED HANSEN

THE DANNY PETERSON THEATRE
BOISE, ID

SCALE: 1/4" = 1'-0"
DATE: 11.01.2016
REVISION:
DRAWN BY: **BWW**

DRAWING
1
of 1

LIGHT PLOT