

1-1-2017

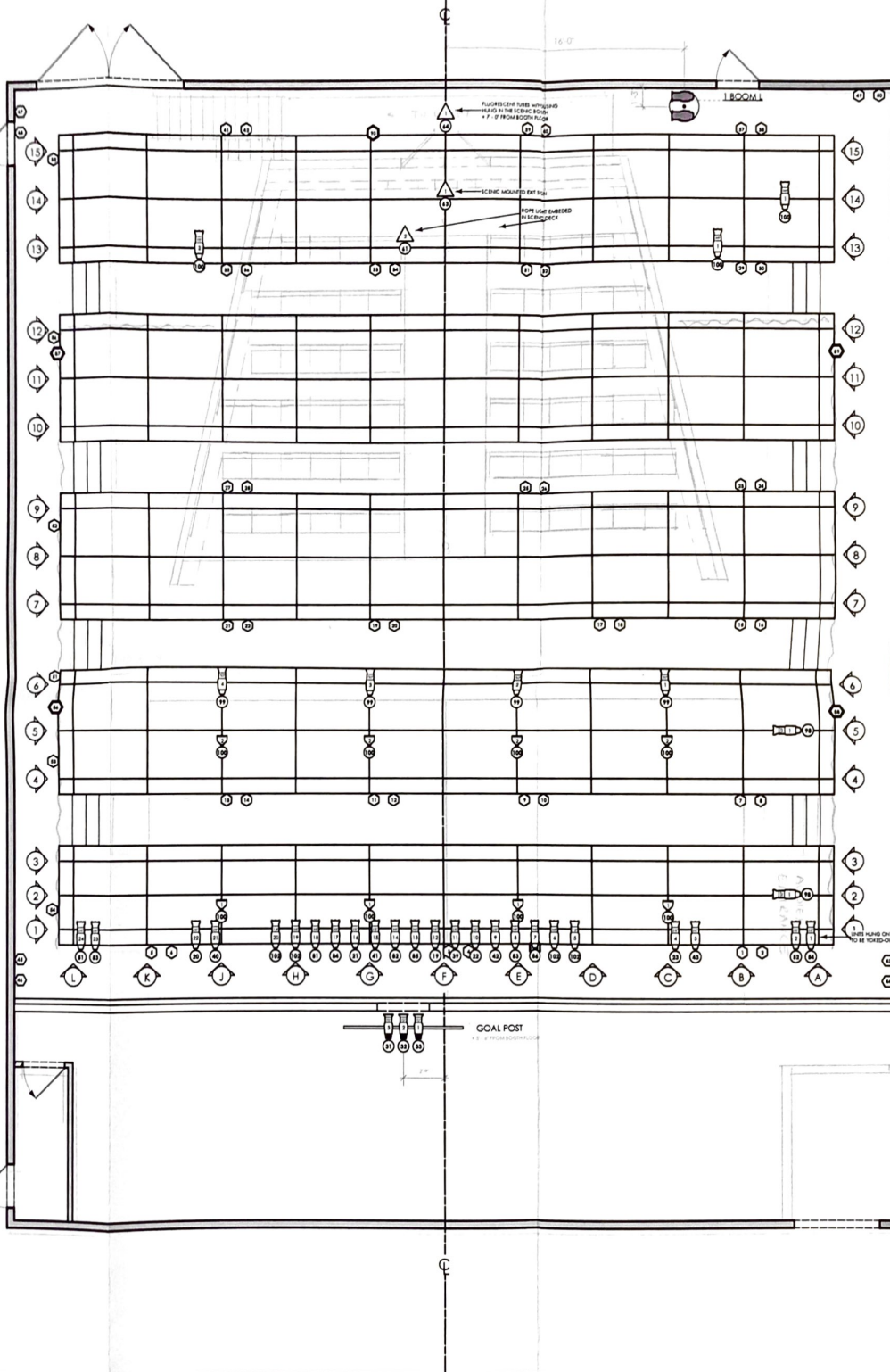
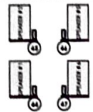
Light Plot

Brandon Washington
Boise State University

HOT DRAWN IN BLUE POSITION.
PROJECTOR WALL 88 IN THE SCENE UP THE 40'



HOT DRAWN IN BLUE POSITION.
PENSIVE PLACEMENT TO BE DETERMINED



1 BOOM L US

1 BOOM L DS



INSTRUMENT KEY

- ETC Panel @ 575w
- ETC Source 4 26° @ 575w
- ETC Source 4 36° @ 575w
- ETC Source 4 50° @ 575w
- ETC Source 4 70° @ 750w
- Practical @ Misc. Wattage
- PAR 38 w/ 6' Housing @ 72w
- PAR 16 WFL @ 75w

TYPICAL UNIT



HOUSE CIRCUITS

- 2.4 kW
- 6 kW

| TECH ADDS | 04.03.2017 | |
|-----------------|------------|------|
| C PRE FOCUS | 03.28.2017 | |
| B PRE HANG ADDS | 03.16.2017 | |
| A PLOT REVIEW | 03.14.2017 | |
| REV | VERSION | DATE |

GENERAL NOTES

- Refer to Paperwork for all color and accessory information.
- Hang all units in orientation as shown.
- All units and accessories to have safety cables.
- Hang all units with Gel Clip pointing up.
- Discuss all units/practicals mounted on scenery with Brandon Washington.
- Discuss cable runs for all ground units and practicals with Fred Hansen.
- Please have Blackwrap, Black Tac and spare R132 and R119 on hand at focus.
- Provide run lights as needed.
- Please drop all color and accessories prior to Focus.



by Annie Baker

| | |
|--|--------------------|
| BOISE STATE UNIVERSITY DEPARTMENT OF THEATRE ARTS | |
| DIRECTOR..... | MIKE BALTZELL |
| LIGHTING DESIGN..... | BRANDON WASHINGTON |
| SCENERY DESIGN..... | MIKE BALTZELL |
| PRODUCTION ELECTRICIAN..... | FRED HANSEN |

THE DANNY PETERSON THEATRE
BOISE, ID

SCALE: 1/4" = 1'-0"
DATE: 04.03.2017
REVISION: D
DRAWN BY: BWB

DRAWING
1
of 2

LIGHT PLOT