



Gordon Reinhart,  
production director  
— faculty



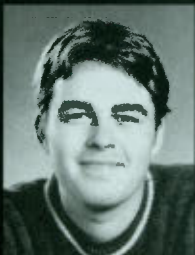
Charles Fee, artistic  
director/production  
director — faculty



Neil Brookshire, actor  
— BA, interdisciplinary  
studies, '01



Dan Peterson, actor  
— BA, theatre arts, '79



Ira Amyx, actor  
— BA, theatre arts, '00



Stitch Marker, actor —  
BA, theatre arts/second-  
ary education, '89

# Acting Up

## BOISE STATE & THE BARD

Theatre arts chair Richard Klautsch consults with fellow faculty member Charles Fee on the subtleties of a scene while student Dwayne Blackaller practices his lines in the wings and alumnus Stitch Marker mulls the finer points of playing the fool. No, it's not a university-produced play. Instead, it's the Idaho Shakespeare Festival's 2002 production of *Twelfth Night*. Klautsch plays the role of Orsino and Fee is the Festival's artistic director.

To paraphrase Shakespeare's *The Tempest*, the partnership between Boise State and the Festival is the stuff of which dreams are made.

That partnership dates to the Festival's birth in 1977, when a group of actors (many of them former or current Boise State students) decided to put on a show. Their first choice, *Hair*, proved to have expensive royalties, so they moved on to Plan B.

"The next logical choice was Shakespeare, because he's dead and you don't have to pay anyone to do him," recalls Marker (BA, theatre arts/secondary education, '89), one of the founding members and still a Festival draw. "It was not a real noble beginning."

Noble or not, the Festival has grown to include a top-notch cast performing in a world-class outdoor amphitheater. Its mission, to "produce great theater, entertain and educate," encourages a continued bond with the university that sits practically in its backyard.

"What this gives students is real education for the real world," says Klautsch. "Learning about theater, about how to do it, can never be separated from the

actual 'doing' of theater."

It also lets students work with professionals from all over the country, he says. "To get that kind of exposure and experience right here in Boise is extraordinary."

The experience students gain when they step out of the university environment and work side by side with professors and professionals from across the country is unparalleled, Klautsch says. "The demand this places on students is very educational. They get to see how we approach our work in a professional environment."

But the partnership is complementary in other ways as well, says managing director Mark Hofflund, calling it a partnership of opportunity. "On a practical basis, we're getting actors, we're getting designers and we're getting opportunities for ourselves."

Because several Festival directors also teach at Boise State, they have the opportunity to try things that may not fly on the professional stage. "New ideas are always being born in the academic world," he







Sara Bruner, left, as Viola; Richard Klautsch, below left, as Orsino; and Dwayne Blackaller as Curio in *Twelfth Night*.



says. "The partnership between Boise State and the Festival gives us a forum for these ideas and issues within the profession. It's a creative association."

And Hofflund doesn't discount the benefit of an educated audience, noting that they bring with them a level of experience atypical in a community without a university. And guests who come to town to teach or attend seminars add an additional dimension to the mix.

"I can't tell you how important it is to have members of our audience who are at a deeper level and can perceive the quality of what we are doing," he says, noting that those audience members are just as likely to have a background in other disciplines as they are in the arts. "We become a stronger arts community as we stand on the shoulders of people

graduating from business and finance schools."

Marker agrees the partnership has been a good move. "The Festival and the faculty at Boise State's theatre department have been really smart since the beginning about [building] an allegiance and nursing it," he says. "It's had great benefits for the Festival, for Boise State and for audiences."

—Kathleen Craven



Richard Klautsch, actor  
— theatre arts chair



Dwayne Blackaller,  
actor — student



Karen Wennstrom, actor  
— BA, theatre arts, '97

Other members of the Boise State community involved with the 2002 Idaho Shakespeare Festival included:

- Mike Baltzell, carpenter and scenic painter — faculty
- Sara Bruner, actor — former student
- Amanda Costello, house manager — student
- Adam Cotterell, wardrobe — BA, theatre arts, '02
- Bianca Dillard, apprentice — student
- Mika Freeman, wardrobe mistress — student
- Nick Garcia, actor — former student
- Rebecca Hoffman, costume crafts — faculty
- Cody Hyslop, sound intern — BA, theatre arts, '01
- Lisa Hyslop, light board operator — BA, theatre arts, '01
- Olivia Lebens, stage management, production assistant — student
- Dano Madden, box office — BA, theatre arts, '97
- Fran Maxwell, prop assistant — BA, theatre arts, '99
- Aaron Milette, box office manager — BA, English/general literature, '00
- Rosela Moseng, box office — BA, theatre arts, '02
- Nickie Shell, company manager — BA, interdisciplinary studies, '99
- Zach Stinnett, sound operator — student
- Tracy Sunderland, actor — faculty
- Eden Teagle, box office — BA, theatre arts, '01
- Christine Zimowsky, administrative assistant — BA, art, '95