

4-9-2007

Arbiter, April 9

Students of Boise State University

Although this file was scanned from the highest-quality microfilm held by Boise State University, it reveals the limitations of the source microfilm. It is possible to perform a text search of much of this material; however, there are sections where the source microfilm was too faint or unreadable to allow for text scanning. For assistance with this collection of student newspapers, please contact Special Collections and Archives at archives@boisestate.edu.

THE ARBITER

THE INDEPENDENT STUDENT VOICE OF BOISE STATE SINCE 1933

MONDAY, APRIL 9, 2007

arbiter

ISSUE 55, VOLUME 19, FIRST ISSUE FREE

OPINION

PAGE 4

A SoHo artist sees Jesus as more sweet than savor and The Arbiter is put under the spotlight concerning how it treats hard issues.

CULTURE

PAGE 5

Get a heads up on Greek Week, learn some ancient Mayan dentistry and read about the delicious public art discussed by the Fettuccine Forum.

SPORTS

PAGE 8


The Boise State football team showcased its young talent in the second scrimmage of the spring, while the track teams battled Idaho State in a dual.


ARBITERONLINE.COM


The Arbiter culture editors are rocking their podcast "The Dish." Listen to it today.

College Republicans President Jonathan Sawmiller and Cultural Center Marketing Director Shannon Morgan square off in "Campus Crossfire," the new segment of the webcast "Out of the Blue."

WEATHER


TUESDAY
High: 49F / Low 34F


WEDNESDAY
High: 57F / Low 38F


THURSDAY
High: 60F / Low 34F

ON CAMPUS

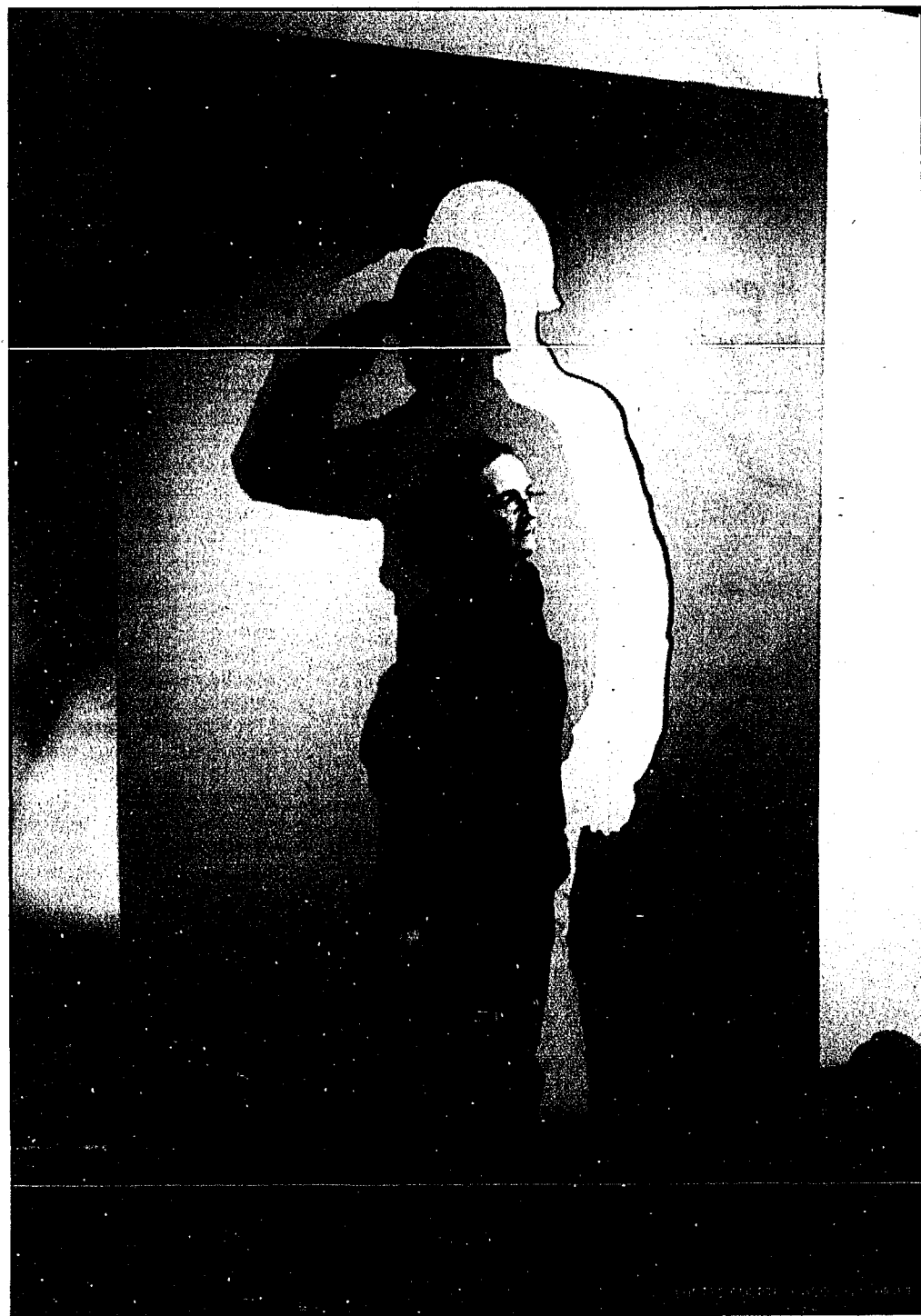
TUESDAY
Nutrition Q & A at The Student Recreation Center Details:
Date: Every Tuesday Time:
4:15pm-5:15pm
Location: Fitness Testing and Wellness Room, Recreation Center

WEDNESDAY
Drop-in Kayak Pool Session
These sessions are a great opportunity get into the pool during the off-season and work on your kayaking skills. Practice your kayak roll, stokes, bow stalls, flat-water moves, and other tricks. These are non-instructional sessions. If you are interested in instruction check out the Kayaking seminars. No pre-registration is necessary. For details on this Campus Recreation event, call Geoff Harrison at 426-2628.

Correction:
In the article entitled "This isn't New York City," printed in the April 2, 2007 issue of The Arbiter, Kimberly Moore, director of the Idaho Black History Museum, was incorrectly identified as being from New York City. Moore is from Detroit, Mich.

Students salute soldiers

BY RYAN RASMUSSEN
News Writer



A memorial for the brave men and women who have served in the military will be erected on Boise State University's campus along with the new Student Union Building expansion.

The memorial will replace the old one dismantled during the expansion of the library several years ago.

"[The memorial] came from the students itself, it wasn't something that the administration decided to do, the idea originally started with the student body," Fine Arts Program Coordinator for Student Activities Holly Gilchrist said.

The installation is called "Salute" and was designed by Kay Kirkpatrick, an artist who resides in Seattle but attended Boise State University and also has family roots in Idaho.

The installation will be a metal and stone sculpture featuring the silhouette of a soldier saluting.

"The salute as a gesture symbolizes both answering to duty and the individual who places working toward the benefit of others above themselves," wrote Kirkpatrick in her proposal.

The sculpture will have a row of basalt columns that will be polished and smooth, with a proportionate height for students to sit on. Each of the stones will represent a decade in the history of the university.

In the middle of the columns will be two steel structures.

One of a cut out of a soldier creating an outline and the piece cut out will be a short distance away.

The cutout will be more than six feet high, so that viewers may actu-

ally stand in the cutout of the soldier.

The installation will be located in the northeast corner of the new Student Union Building expansion.

"I think it's going to be a great addition to the university," said Gilchrist. "I think it will last forever as long as the university does. It's an interactive installation that will provide extra seating and a great place for contemplation."

The overall cost for the installation is \$25,000, that cost will be covered by \$10,000 being donated from the Associated Students of Boise State University and the rest is covered by donors who currently remain anonymous.

About 4,000 request pamphlets for proposals of the installation were sent out to artists with a conceptual objective, physical requirements, eligibility, deadline and other pertinent information.

For artists or designers to be eligible they had to have some tie to the state of Idaho.

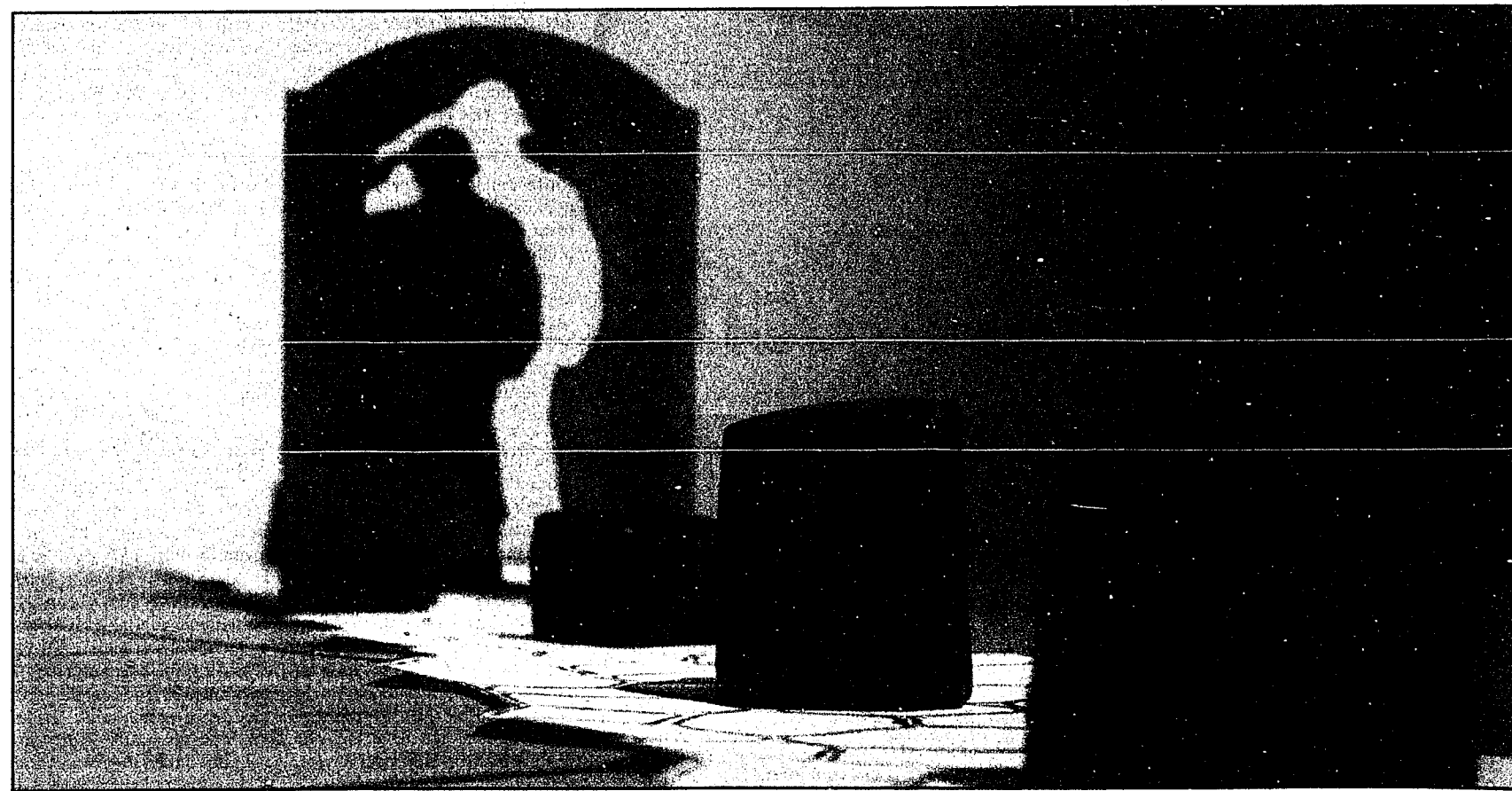
Of all the proposals received, two were chosen and then students were asked to comment on the two models, to help decide which one would be chosen. The Art Advisory Committee reviewed more than 200 responses.

Physical criteria requests were that it be sensitive to vehicular/pedestrian needs in that it should not block walkways, made of durable materials that are easy to maintain and it had to be safe for passers-by.

"It was the stronger of the two proposals, less maintenance, nice aesthetic composition ... I hope it's the beginning of more art being brought to BSU," Gilchrist said.

For more information on the Veteran's Memorial contact Holly Gilchrist at 426-1223.

Artist Kay Kirkpatrick stands next to the memorial to represent the large size of the soldier. The memorial will be placed in the northeast corner of the new SUB expansion. It will replace the previous memorial that used to sit near the library many years ago.



BSU student CMA donates \$20,000 back to university

COMPILED BY
Arbiter Staff

Members of the university's Construction Management Association (CMA) recently presented a check to President Bob Kustra; the funds will go into an account to establish a new, permanent lecturer position in the Department of Construction Management in Boise State's College of Engineering.

They could have thrown a party, bought club jackets and still had enough cash to charter a plane to the Bahamas. Instead, construction management students decided to give \$20,000 in donations their association has received over the

years back to the university.

"We recognize the need for new faculty in our growing department. I hope this donation shows that we care about the education of students who come after us," senior construction management student and outgoing CMA president Joshua Martin said.

Kustra praised the students for establishing the habit of giving back so early in their careers.

"This group is setting a model for what student associations can accomplish," Kustra said.

The funds the CMA donated came from dozens of business and community groups that had been the recipients of community service

projects completed by construction management students over the past 25 years.

These groups made donations back to the CMA after the students volunteered their labor for a variety of construction-related projects at Zoo Boise, the Idaho Botanical Gardens, Deer Flat Wildlife Refuge, the Ronald McDonald House, the Veteran's Administration, ball walls at more than a dozen local elementary schools and many other projects.

In the past, the CMA has donated the interest from their account to a scholarship fund for construction management students, but until now had never touched the princ-

pal.

The \$20,000 will be added over the next two years to an account managed by the Boise State Foundation for a new position in the Construction Management Department. That account was established in Fall 2006 with a \$60,000 donation from Idaho Sand & Gravel.

"It's quite an astonishing gesture, and I don't know how to thank you for supporting the program and the students who come after you," Department of Construction Management chair Rebecca Mirsky said.

Boise State's CMA was established in 1981 as the student chap-

ter of the Associated General Contractors (AGC), just two years after the construction management program began in 1979. Since then, the Boise State CMA has rarely gone a year without receiving an award in AGC's national Outstanding Student Chapter Contest, including seven 1st place awards, five 2nd place awards, three 3rd place awards and two honorable mentions.

In addition to the many AGC outstanding student chapter awards, the Boise State CMA has five times been designated the Associated Students of BSU Outstanding Professional Organization of the Year.



Where it Pays to Care

When you give plasma you're literally giving someone another chance at life. Thousands will benefit from your blood-plasma donations.

Up to \$200 compensation for your first month.

For further information on how you can help please call:

Biomat USA, Inc.
(208)338-0613

THE HEADLINES

WORLD

Falling rice yields viewed as an early sign of hazardous global warming in Japan

The latest report by a U.N. panel on climate change may have focused on future dangers, but some of the problems it warns of have already been witnessed in Japan and other parts of the world.

The fourth evaluation report of the Intergovernmental Panel on Climate Change, adopted by the United Nations, warned that many people will have to dramatically change their way of life as extreme temperatures and drought could affect many parts of the world.

"I feel Kyushu may be turning into a subtropical region," said Shozo Koga, a 51-year-old farmer in Isahaya, a major rice producing area in Nagasaki Prefecture.

Koga grows vegetables and rice on the same farmland during the course of the year, but still has to take on a side job to supplement his income. "I can no longer live on the rice I'm able to produce," he said.

Rice harvests in the Kyushu region have been poor for the past four years, while the quality of much of this rice also has fallen. An increasing number of rice harvests are being rated second and third-grade, which is worth 1,000 to 2,000 yen less per 60 kilograms than first-grade rice.

Last year, the total crop yields of rice in the city fell to below half of what would be expected in an average year. The lower yields have been attributed to the high temperatures between late August and early September, when rice grains mature.

Junya Koga, a senior researcher at the prefectural Nagasaki Agriculture and Forestry Experiment Station, said harvesting first-grade rice of Hinohikari, the most widely grown variety in the prefecture, is almost impossible when temperatures exceed 26.5 degrees Celsius during the period.

He added that in recent years it had not been unusual for temperatures in the city to exceed this level at that time of year.

The IPCC report warned that rising temperatures and changes in rainfall patterns could lower agricultural productivity, resulting in serious food shortages in Asia.

In Japan, agriculture experts predict a fall of up to 40 percent in rice production, particularly in western Japan, where the climate is generally warmer.

Some farmers in Nagasaki Prefecture last year began cultivating a new rice variety, Nikomaru, which is more resistant to high temperatures. The prefectural government has been trying to increase production of the seeds since 2004.

Japan is not immune to the consequences of climate change overseas, as it imports an enormous amount of food.

For example, off the coast of South America are abundant supplies of small fish, especially anchovy. Food made from anchovy is essential for feeding livestock and farmed fish, and about 80 percent of such food used in Japan comes from South America.

But the report said that a rise in the ocean's surface temperature would damage coral reefs and, as a result, the distribution of marine resources in the southeast region of the Pacific Ocean, including off the coast of South America, would be affected.

An ominous sign of what may be to come occurred in Peru last year, where catches of small fish dropped by about 3 million tons compared with the previous year.

As a result, prices of small fish in Japan, which were about 80,000 yen per ton in 2005, at one point doubled.

Itaru Ogata, 57, who farms fish such as flatfish and red sea bream in Sumoto Bay off Amakusa, Kumamoto Prefecture, complained, "I can't cope with a further rise in costs."

He said his business had been hit by a 20-percent rise in the cost of food at his fish farm since last year. In Akita Prefecture, where Hinai-jidori (a well-known variety of chicken) are raised, the cost of mixed feed for the birds rose by more than 6,000 yen per ton.

"I can't lower the quality of the feed," said Kumi Goto, in Kitaakita in the prefecture. "But it's not easy for me to raise the shipping price either."

Water shortages in the vast grain belts of Australia and North America also are a threat to Japan's food security.

Australia's record-breaking drought last year severely hit wheat fields and livestock farms in the southern part of the country, with the wheat harvest in 2006 estimated to have fallen 60 percent from the previous year, to 10.5 million tons.

The drop in supply hit major Japanese flour makers Nisshin Flour Milling Inc. and Nippon Flour Mills Co., which in February raised wheat prices for wholesalers.

The panel's report warned that a rise in temperature of just one degree Celsius also would have catastrophic impacts on wildlife, and added that if global temperatures rise by between 1.5 degrees Celsius and 2.5 degrees Celsius, 20 to 30 percent of the world's species could become extinct.

Global warming also produces knock-on effects that extend beyond the species that initially becomes extinct, as animals that relied on it as a source of food starve.

The report also argued ecosystems will likely not be able to adapt quickly enough to the changing temperatures and increasingly regular hazards such as forest fires.

It claims that ultimately the Earth's ecosystem could collapse completely and be unable to recover.

Prof. Izumi Washitani, a researcher of ecological preservation studies at Tokyo University, said, "The ecosystem contributes to human lives in various ways such as water purification, providing grain, marine products and other resources. It can also help control pandemics of disease."

"If it collapses, our own lives will be greatly affected by the deterioration in drinking water quality and food shortages, among other things."

NATIONAL

California implements tax on medical marijuana

When it comes to the sale of medical marijuana, California is seeing green.

For the first time since voters passed Proposition 215 more than a decade ago, state tax assessors are reaching out to the state's 150 to 200 estimated medical marijuana retailers to get them to pay their state and local sales tax.

In February, the state Board of Equalization sent out a special notice to sellers of medical marijuana, urging them to obtain a seller's permit like any other retailer.

The notice said, "If you sell medical marijuana, your sales in California are generally subject to tax and you are required to hold a seller's permit."

It goes on to warn sellers that "if you do not obtain a seller's permit or fail to report and pay the taxes due, you will be subject to interest and penalty charges."

Proponents of the move say the outreach effort could help legitimize medical marijuana stores by giving them the same rights and responsibilities as any other retailer. Yet it's causing a lot of consternation among cannabis club owners and medical marijuana advocates.

While some cannabis club owners want to be "good neighbors" and pay the sales tax, others prefer to stay underground for fear that any tax information they report will be used against them by federal drug enforcement officials.

"It's frustrating," said Chris Moscone, an attorney representing the Hemp Center, a San Francisco dispensary currently negotiating with state tax collectors on paying back taxes. "There are basically two camps: Those that want to be treated like legitimate businesses, and the other side, where they're still rebels and don't want to be taxed."

When Californians passed the Compassionate Use Act of 1996, or Proposition 215, decriminalizing the use of marijuana at the recommendation of a doctor, the law failed to address how the state should deal with medical marijuana sales.

In early 2005, Board of Equalization Chairwoman Betty Yee said the board took up the Hemp Center's case and soon realized an inconsistency in the law. While the shop had been paying

taxes on T-shirts, hats, pipes and other consumption devices, it did not pay taxes on medical marijuana.

The board ultimately determined that medical marijuana was subject to the sales tax because it is not dispensed by a pharmacist or approved by the Food and Drug Administration.

State officials estimate there are about 150 clubs or centers selling medical marijuana throughout the state. Advocates say there are likely more than 200. Of those, the state found only 27 held sellers' permits.

LOCAL/BSU

Local unemployment rate holds at 2.6 percent

The local unemployment rate remained relatively unchanged through March, registering only a slight tenth of a percentage point increase since February and well below the four percent that most economists consider full employment.

The rate inched upward to 2.6 percent because more people entered the workforce than immediately found work, Idaho Department of Commerce and Labor economist John Panter said. "In a lot of ways that's actually a good thing because the available labor force is getting stretched pretty thin," Panter said. A new report issued by Idaho Commerce and Labor indicates that 892 people joined the Treasure Valley's labor force last month, while total employment increased by 605 people. In all, the Treasure Valley (officially the Boise-Nampa metropolitan statistical area) tallied an almost 299,000-person workforce - and nearly 298,000 of them were working.

"This is a really big [metropolitan area], and the fact that we've had such low unemployment for so long is really amazing," Panter said. In fact, the last time local unemployment exceeded the three percent mark was last July, when it temporarily hit 3.1 percent. And last month's rate even beat the 2.9-percent rate of March 2006 by three-tenths of a percentage point. "A lot of job growth is related to industries that are following the population growth," Panter said, referring primarily to industrial, retail and service sector jobs. "And interest rates are still at historic lows, and that's really a driving factor in our economy."

"Barring any sudden drop in immigration or sudden hikes in the interest rates, we should be fine for a while," he added. The Treasure Valley's low unemployment rate nearly mirrored the state rate, which registered 2.8 percent in March. "Our economy is stable, sustainable," Idaho Commerce and Labor Director Roger Madsen said in a statement. "Barring any catastrophe, we're probably in for seasonal job growth of somewhere between three and 3.5 percent."

Courtesy Idaho Press-Tribune

WHAT THE?

Wait! No! Come back! I really, really love you!

A woman broke her boyfriend's heart when she moved from Prijedor to Mostar in Bosnia and took a job as a waitress.

In an effort to get her to come back home, he told her that Mostar was a dangerous place, and set off five bombs in less than a week near her restaurant to prove his point.

It worked. She has moved back home and has said that she will marry him when he gets out of jail next year.

Hey chief, I think we've got a pretty good clue here

A group of young burglars broke into some condominiums in Orange County, Fla., then later videotaped themselves with the stolen property.

But a few days later, they stole a car and left the incriminating video in the vehicle when they abandoned it.

jobprescreen.citigroup.com

Call on Your Gift of Gab

BE THE VOICE OF CITI



Put your talent for talk to good use. Whatever your interests, you'll discover thousands of choices. Here, you'll find the great pay and excellent benefits you need to make the most out of your career!

INBOUND COLLECTIONS REPRESENTATIVES
CUSTOMER SERVICE & SALES REPRESENTATIVES

Part-time and Full-time Opportunities.

Please visit jobprescreen.citigroup.com for a list of upcoming Pre-Employment Information and Assessment Sessions located at 2200 S. Cobalt Pt. Way, Meridian, ID 83642 (Corner of Eagle and Overland Road).



An Equal Opportunity Employer M/F/D/V.

citi

CLEAR CHOICES

"PROVIDING A CLEAR PATHWAY TO STUDENT SUCCESS!"

FEELING Blue?

- NOT SLEEPING OR SLEEPING TOO MUCH?
- LOW ENERGY, FEEL SLOWED DOWN?
- DIFFICULTY FOCUSING, REMEMBERING?
- FEELING SAD, ANXIOUS, OR EMPTY?

Contact Counseling Services, 426-1601
or the Health & Wellness Center, 426-1459

WE ARE HERE FOR YOU!



WWW.BOISESTATE.EDU/HEALTHSERVICES • 426-1459

BOISE STATE
STUDENT AFFAIRS

HEALTH & WELLNESS COUNSELING SERVICES

Non-newsworthy news



The unsinkable sinks

BY CHAD MENDENHALL
News Writer

April has always been reserved as a time to celebrate life and creation.

As spring flaunts her blooming flowers, budding trees, nests of singing birds and warm afternoon breezes, let us also remember the horrified faces frozen in terror and chill on a late April evening on the ice-packed fields of the Atlantic Ocean.

In April of 1912 one of the largest and most luxurious ocean liners ever built departed on her maiden voyage across the Atlantic Ocean. The Titanic represented the best of ocean liner technology in that time.

Her superior technology and design led people to believe that it could never sink.

In fact, an advertising brochure said the ship was "designed to be unsinkable."

One passenger, Margaret Devaney, said, "I took passage on the Titanic for I thought it would be a safe steamship and I had heard it could not sink."

Sadly, only four days after casting off, the bitter waters of the Atlantic Ocean would claim over half of the Titanic's passengers and bury the ship some 12,500 feet under water.

Despite several iceberg warnings from his crew and other ships, the Titanic's captain, Captain E.J. Smith, ignored the warnings, maintained speed and pressed forward through the freezing North Atlantic ice fields.

Later that evening, the unsinkable ship collided with an iceberg and almost three hours later sank to its watery grave.

The panicked passengers of the Titanic tried to board the ship's lifeboats only to find that there were not enough to accommodate for all the passengers and crewmembers. Of the 20 launched lifeboats, most were not even filled to capacity.

The Titanic's tragic result of that cold April night in the ice fields of the North Atlantic claimed an estimated 1,500 lives.

The majority of passengers that failed to secure a lifeboat did not drown, but froze to death in the icy waters.

Survivors reported that the Titanic's band stayed on board of the floundering ship in an effort to keep passengers calm. Even after it became obvious the ship was going to sink the band continued to play for passengers.

The final song they played was "Nearer, my God to Thee." None of the Titanic's eight-member band survived that night.

In the nearby waters rested another oceanliner, the Californian, which had stopped for the night and turned off its radio.

Sometime after midnight, the Californian's crew informed their captain that another ship was firing rockets into the sky.

Instead of waking the radio operator, the captain concluded that the other ship was merely having a party.

Upon hearing of the Titanic's troubles in New York, White Star Line Vice President P.A.S. Franklin said, "We place absolute confidence in the Titanic. We believe the boat is unsinkable." By the time Franklin's statement was uttered, the company's ship was resting on the bottom of the ocean.

In 1985 a joint U.S.-French expedition discovered the remains of the Titanic on the sea floor.

They found the bow and stern almost 2,000 feet apart, which confirmed survivor's reports that the ocean liner had broken apart and split into two pieces.

The catastrophe stands as one of the worst maritime disasters in history ever to occur during a time of peace, and reminds us of life's fragile inconsistencies that sometimes occur when we should be celebrating creation rather than destruction.

Double-homicide

Suspect linked to Arizona shooting

COURTESY IDAHO PRESS-TRIBUNE

Police say John Joseph Delling, accused of shooting and killing two men in Boise and Moscow this week, shot and wounded a third victim in Tucson, Ariz., in March.

Further, authorities say that since early March, Delling has driven about 6,500 miles across seven states: Idaho, Oregon, Washington, California, Nevada, Arizona and Utah.

As a result, they're retracing his steps and contacting law-enforcement agencies along his route to see if other similar killings have occurred.

"We're concerned that this is not over yet," Ada County Sheriff Gary Raney said Friday in Boise. "We've been overwhelmed with these possibilities."

In the Arizona attack, authorities allege Delling, 21, shot and wounded Jacob Thompson, 23, a 2002 Timberline High School graduate, on March 20 in Tucson, where Thompson is attending the University of Arizona. Delling graduated from Timberline in Boise two years after Thompson.

Delling is also a suspect in these two Idaho murders:

University of Idaho student David Boss apparently let someone into his Moscow apartment last Saturday, only to be shot twice in the head at close range.

Delling had attended Timberline High with Boss before they both went to the University of Idaho. Delling had been kicked off campus.

On Monday night, 25-year-old Bradley Morse was killed with gunshots to the head as he left his job as a janitor at the Idaho Department of Parks and Recreation headquarters east of Boise.

Delling was arrested Tuesday by police in Sparks, Nev., on a stolen car warrant issued by Ada County and a first-degree murder warrant issued by Moscow police in the death of UI senior Boss.

Despite his injuries, Thompson is now able to speak and identified Delling from a photo lineup, Raney said.

"Often crimes are a matter of who did it. This is a matter of why did he do it," Raney said. "Thompson has lived at the University of Arizona for the past three years. Was it something that happened four years ago? Eight years ago? Ten years ago?"

Raney said investigators believe Delling lured Thompson to a vulnerable place by tapping on his dorm room window and calling for the Arizona student to move his truck.

The truck was parked on a narrow street and a request to move vehicles was not uncommon, Raney said.

Thompson went out to the truck, got in, and began to move the vehicle. Police said he spotted Delling on a bicycle and called out to him, asking if he was the person who wanted him to move the truck.

Delling walked to the back of Thompson's truck, possibly to look at the license plate, Raney said, then stepped up to the truck and fired five shots.

Investigators said three of the shots hit Thompson in the arm, shoulder and head. Raney said the most damaging bullet hit Thompson's face and passed through the back of his head.

Miraculously, Thompson survived and is "alive and recovering," Raney said. Thompson is in rehabilitation, but Raney said he was "not sure he'll recover fully," describing his injuries as "quite debilitating."

Raney said police became aware of the attack on Thompson after a citizen who had been paying attention to media coverage on the case informed officers about the shooting in Arizona, noting that the victim's age and former Treasure Valley connection correlated with the Idaho victims.

Police search for links between victims

Ada County Sheriff Gary Raney said no single threat connects all three victims investigators allege died at the hands of John Delling.

Jacob Thompson has lived in Arizona for the past 4 years, and Raney said it is hard to nail down a timeline for their connection.

Bradley Morse didn't grow up in the same area as Delling and didn't go to the same school. Investigators' best guess connects Delling with the victims 4, 6 or 8 years ago.

"I doubt there's any logic in this," Raney said. "We're trying to put logic in a situation where someone

acted irrationally."

The sheriff said he is concerned that disturbing details of Delling's activities will continue to surface.

The "bothersome" thing about the crime, Raney said, is that the three victims by all accounts were upstanding successful young men and students. All were enrolled in schools of high learning, all were well thought of and generally were academically successful.

"This is a case of senseless murder, there's no motive. They were all good kids," he said. "They were three people minding their own business, and now two of them are dead."

Police believe Delling specifically targeted all three victims, including Morse, and wonder whether the gunman planned to kill more.

Mental evaluation

After a police psychological evaluation and interview, detectives are not inclined to believe that murder suspect John Delling is insane, Ada County Sheriff Gary Raney said.

The suspect is being held in a general hold facility with other prisoners in Washoe County, Nev., rather than in isolation or in solitary confinement, Raney said.

The sheriff said he was not aware of any mental illness, though acquaintances said Delling has a "long pattern of unusual behavior that have put people in fear." Investigators also denied that Delling had any sort of written "hit list."

How to help

The Ada County Sheriff's Office is investigating all possible leads in this case. Officials say no piece of evidence is too small and they request that citizens contact authorities if:

They have had contact with John Delling in recent weeks.

They have seen the rental car, a white 4-door Chevrolet Aveo, license plate 2C AS361.

They know of any event linking John Delling and Bradley Morse at any time in the past.

Those who believe they have any information should call 343-COPS or contact Ada County Sheriff's Office detectives at 577-3702.

Looking for other cases

Starting on March 1, investigators said, John Joseph Delling drove some 6,500 miles across much of the West, including California, Idaho, Oregon, Washington, Utah, Arizona and Nevada.

Police used financial records and rental car records to track his movements.

Now local officials are pleading for any information from people who may have had contact with Delling during his travels.

Detectives have pieced together this timeline of his whereabouts:

March 1-17 — Northern and Southern California

March 18-20 — Tucson (Jacob Thompson shot)

March 22-24 — Northern California

March 24-30 — Southwest Idaho, Eastern Washington, North Idaho (David Boss killed)

March 31-April 2 — Eastern Washington, Eastern Oregon, Southwest Idaho (Bradley Morse killed), Utah, Nevada.

The route included stops in Alhambra, Antelope, Sacramento and Blythe, Calif., Raney said, as well as trips to Baker City, Ore.; Scipio, Utah; Tucson, Ariz.; and Jerome, Boise and Moscow, Idaho.

"Who might have been victims if he was planning another shooting? Why did he drive 6,500 miles in one month?" Ada County Sheriff Gary Raney said.

Police have sent alerts to other departments along the route, trying to find any other recent unsolved shootings, he said.

"He had to eat, he had to sleep, he had to stop and get gas," the sheriff said. "He had to talk to people. We're hoping those people can help. There is certainly a long pattern of behaviors that put people in fear."

Delling also changed his appearance during the trip, trimming his hair and sideburns along the way.

Raney said odd things happened along Delling's path: He rented cars, bought a bus ticket that police don't believe he used, also bought an airline ticket at one point. "There's a lot more out there to learn," the sheriff said.

Police are unaware of any illegal activity regarding how Delling funded his lengthy trip.

He apparently bought and sold used cars and made a profit through that, investigators found.

Ask a cop

Q I have a question about what is allowed and what isn't?

A Charles, there are "dismount zones". Other areas of downtown Boise are marked as "Wheels Down" zones, meaning that all the wheels of the device must maintain contact with the ground. You may log on to www.cityofboise.org and review the city code on skateboarding (10-18-1 through 10-18-3 Boise City Code) for further information. Thank you for your question to Ask-A-Cop.

Program where students and faculty are encouraged to ask campus police officers questions about ordinances, regulations or crime-prevention advice. Ask-A-Cop is designed for informational purposes and not for reporting crimes. Please submit your questions to: Dschoenborn@cityofboise.org

career center

<http://career.boisestate.edu>
426-1747

bronco jobs

Access employment listings on our password-protected, web-based system.

- Student Employment & Internship Job Listings
- Career Employment Job Listings

BOISE STATE UNIVERSITY
DIVISION OF STUDENT AFFAIRS

making connections

OPTIMAL HEALTH SCREENING

THURSDAY, APRIL 12, 10:00AM-2:00PM
FARNSWORTH ROOM, SUB

This screening opportunity will bring together the best practices in integrative medicine today to inform employees and students about how to take responsibility for their healthcare.

A holistic lifestyle assessment, strengths and weaknesses assessment and referrals to a variety of wellness programming will also be available.

Employees and students will find the information, video, and activities stimulating and provide pragmatic steps to improving their health.

For More Information: Contact Karla West, kwest@boisestate.edu or Counseling Services, 426-1601

HEALTH • WELLNESS • COUNSELING SERVICES

BOISE STATE UNIVERSITY
DIVISION OF STUDENT AFFAIRS

www.boisestate.edu/healthservices

THE QUADS ON THE PARK

Home Suite Home
With a Room of Your Own!

From \$325
ALL UTILITIES PAID

336-8787

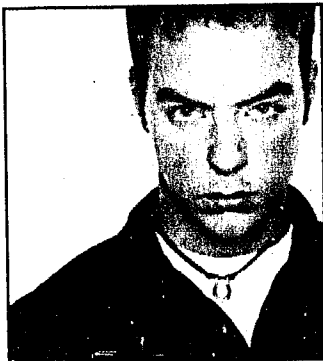
Minimize Your Expenses
Maximize Your Benefits
Love Where You Live

- private bedroom suite
- in-room vanity
- large patio or deck
- laundry facilities
- computer center
- tree cable

SORRY, NO PETS ALLOWED

LOCALLY
TO
GLOBALLY

WHAT'S HOT
WHAT'S NOT
IN ENTERTAINMENT



BY DANIEL KEDISH
Culture Editor

Globally

Hot

Timbaland's got "Shock Value"
Last week producer Timbaland dropped his latest album to fans and all I gotta say is this collection is hot.

With a compilation of songs featuring today's top musicians, Timbaland proves he's got skills that lead to nothing but success, with fast beats and catchy lyrics.

On the album, fans will find Nelly Furtado, Justin Timberlake, Missy Elliott, 50 Cent, Elton John, Fall Out Boy, the lead Pussycat Doll (Nicole Scherzinger) and Dr. Dre.

This is an extremely versatile album that anyone can enjoy and will keep club goers happy.

Not

Enough with celeb-reality

It seems you can't help but see a celebrity's own reality show on every channel nowadays. It used to be only MTV, but now the craze is popping up on almost every network and I have to say, some are just plain cheese in a can.

The two latest shows that have pushed this new trend over the edge are Hilary Duff's new MTV reality show and Tori Spelling's show on the Oxygen network. Come on people, do we really have nothing better going on in our lives that we have to watch Duff cry over a concert or Spelling play house with her new hubby?

I miss the days of good ol' scripted magic that brought the family together and you could enjoy without dealing with "real" life. I guess until that kind of television comes back I'll keep my TiVo set for "Grey's Anatomy."

Locally

Hot

Outdoors goes photogenic

Now that spring is here, it's time to take advantage of all that is warm and breathtaking. The trees are blooming, the grass is green and animals are getting their funk on.

A way to take in the weather's new change of mind can be simple, cheap and fun: a photo adventure.

Now that outside is once again enjoyable, it's time to bust out the cameras and go document a nature hike or an afternoon in the park. Nothing makes for better pictures than the fresh colors and scenes of spring.

Not

Luxurious atmosphere prices

While the temperatures continue to rise, there is always the consequence of great weather: the air conditioning bill.

One of the most essential aspects of any residence can come at a high price. On a college budget that can be one mind-wrecking task to stay on top of each month.

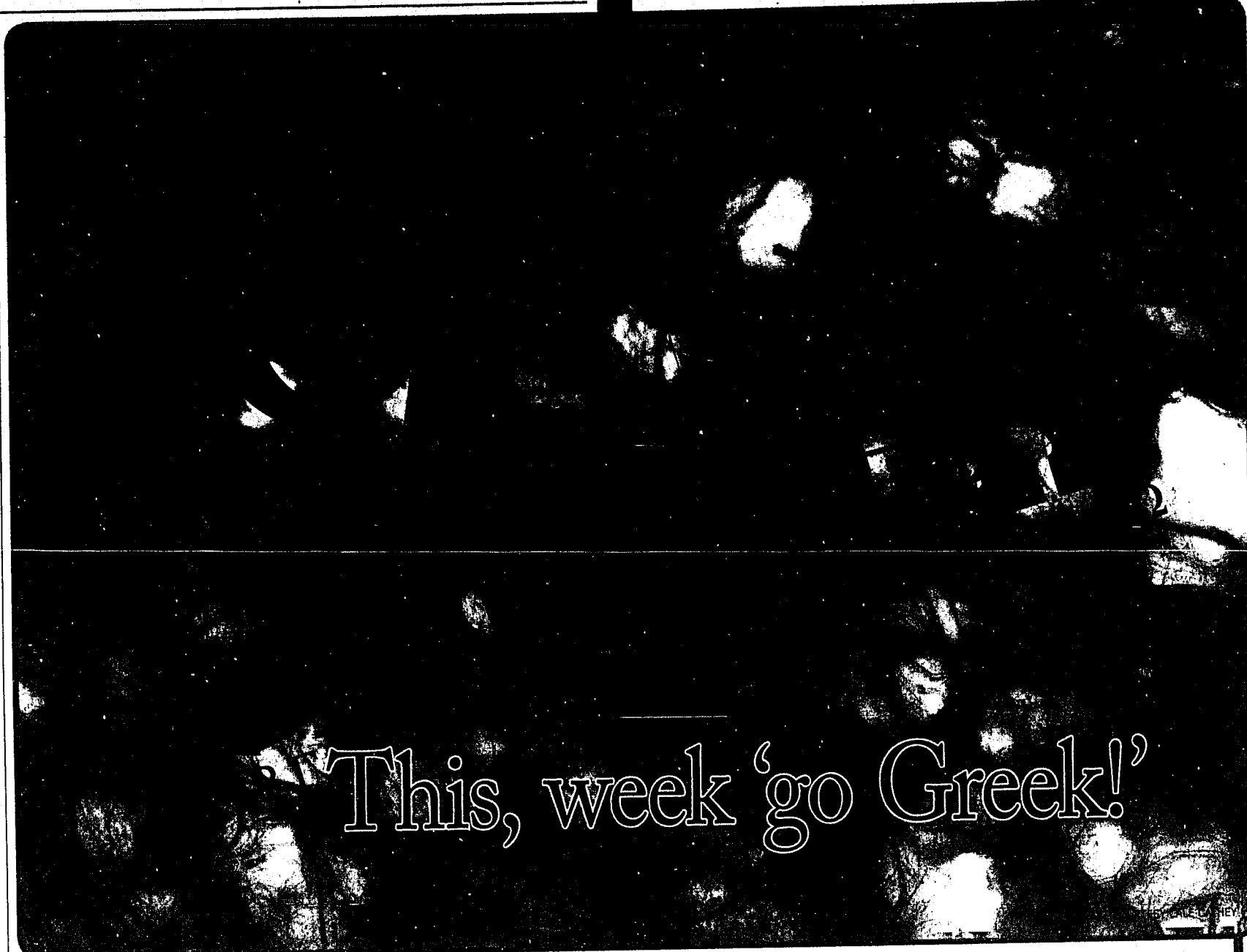
Nevertheless, here are a few tips to help both keep your home cool this season and ease the budget.

First, make sure to never to leave the air conditioning on continuously.

You don't need a cool apartment with no one in it. The best thing to do is switch the device to auto so it stays on only to reach a certain temperature while you are home.

Then, make sure to keep blinds closed on windows hit by direct sunlight which, when left uncovered, can heat up the room.

And last but not least, invest in a few fans to keep the cool air circulating because sometimes it settles toward the floor when the heat rises.



This, week 'go Greek!

BY STEVE AHLBORN
Culture Writer

Greek Week is an event that allows fraternities and sororities a chance to carry on festivities and showcase their members so that others can see the opportunities that come from being a part of the Greek system.

This week of games and fun is taking place from April 9 through April 13. Different activities will take place each day.

The majority of these activities will be held on campus.

The Greek organizations will be competing in several team games throughout the week such as dodge ball, talent shows, relay races, basketball, volleyball and a dance.

One event this week is "Wear Your Letters Day."

This is an opportunity for the Greek members to show their pride for their chapters.

These activities are exclusively for the

members of Greek organizations.

But don't be dismayed, because there are two activities in which every student is invited to participate.

On Thursday, April 12, starting at 7 p.m., the movie "Stomp the Yard" will be playing in the Hatch A Ballroom of the

ple really know that there is any Greek life on campus."

Currently, there are nine Greek organizations on campus.

There are four fraternities, four sororities and one Greek honors group.

Two of these organizations have been

Omega, Delta Beta Nu and Alpha Xi Delta.

The last Greek organization is the Order of Omega honors group.

The members of this order must maintain a 3.0 grade point average.

The mission statement of the university in reference to the Greeks is, "Boise State University provides support for a unified Greek community that meets the needs of students at a metropolitan, commuter, state-supported institution. To do that, the university offers Greeks specialized leadership development opportunities, support in recruitment, guidance in goal setting/achievement and access to services and programs, intentionally furthering a sense of community among chapters."

Carrie Miller, student activities program coordinator for Boise State University, was recently appointed the advisor for Greek life at the university.

For more information about the Greek organizations or to find out how to join a specific chapter, e-mail her at carriemiller@boisestate.edu.

“ Boise State University provides support for a unified Greek Community that meets the needs of students at a metropolitan, commuter, state-supported institution. ”

- Boise State Greek Organization Mission statement

Student Union Building.

On Saturday, April 14, a luau will be hosted. The luau is not a part of the Greek Week festivities, but it is a way for the Greeks to show their support for other groups recognized on campus.

Russ O'Leary, a student at Boise State University, said, "I don't think that peo-

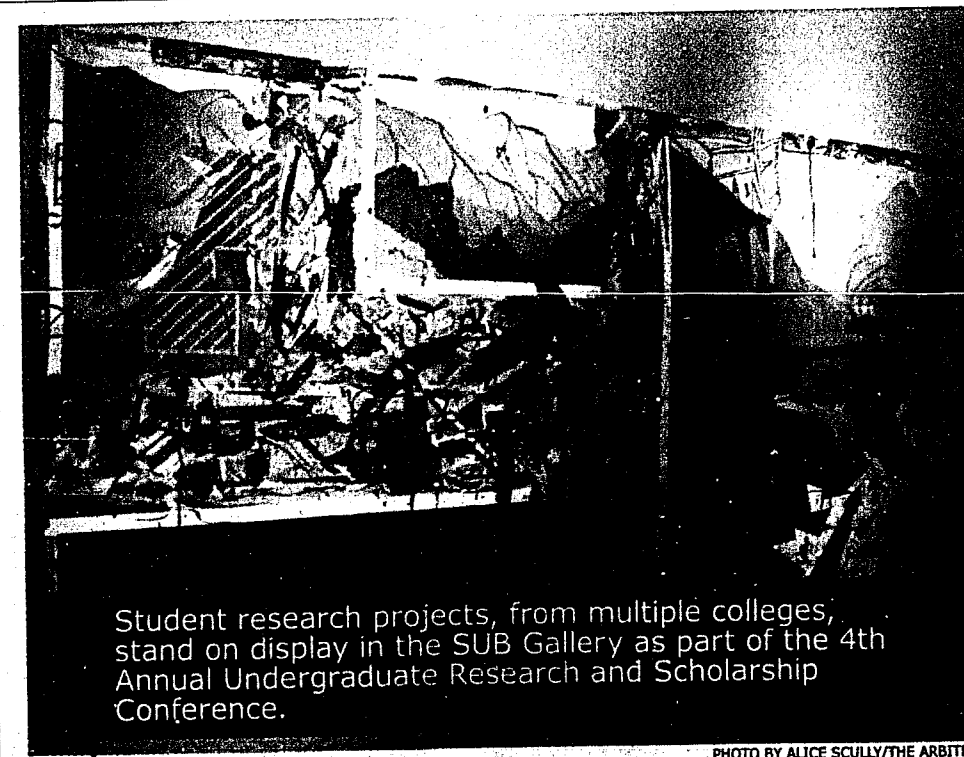
ple really know that there is any Greek life on campus."

recently recognized by Boise State. They are the Latino fraternity, Sigma Lambda Beta and the Latina sorority, Sigma Lambda Gamma.

The rest of the fraternities include: Kappa Sigma, Alpha Kappa Lambda and Sigma Alpha Epsilon.

The sororities include: Alpha Chi

Research exhibition on display in SUB gallery



Student research projects, from multiple colleges, stand on display in the SUB Gallery as part of the 4th Annual Undergraduate Research and Scholarship Conference.

PHOTO BY ALICE SCULLY/THE ARBITER

BY STEVE AHLBORN
Culture Writer

The 4th Annual Undergraduate Research and Scholarship Conference 2007 will take place

April 16 from 1 to 4 p.m. in the Jordan Ballroom of the Student Union Building. President Bob Kustra and Provost Sona Andrews will be attending. Awards will be given from 3:30 to 4 p.m.

Judy Wauer, an administrative assistant in the provost's office and conference organizer, referred to the conference as an "opportunity for students to showcase their research and scholarly activities that

occurred during the current academic year."

Students will present their posters with text concerning specific research they gathered. There will also be highlights of the President's Writing Awards.

All students, faculty and staff are encouraged to come look and listen to the research done by students from the university. Refreshments will also be available.

This conference started in 2001 as a research conference solely for the College of Social Sciences and Public Affairs. Due to the success of the conference, the event was expanded four years ago to include students in any college who wish to share their findings.

Sharon McGuire, associate vice president for undergraduate studies stated the goal of this conference is to "continue to cultivate the role of undergraduates in research... We want to give students real experience in creating knowledge."

In all, over 250 students participated in creating podium, poster and visual art presentations for this conference. There are 108 actual projects with multiple students working on its research. The top students' projects from each of the colleges will be recognized for outstanding achievement.

There are three forms of research

that will be included at the conference. These forms will either be in the SUB gallery or the upcoming conference.

The first type of research is the gallery presentation of program cover designs, drawings, paintings and clocks, which will be on display through the conference.

The large rectangular display wall in the gallery facing the hallway is covered with a poster of research done by Chris Sagan. His painting is called, "The Atlanta Project."

In a short summary of the painting, Sagan explained, "I am exploring the destruction and pollution of the land through the processes used in the mining industry... the purpose, effect and potential effects of the proposed Atlanta gold mine in the town of Atlanta, Idaho."

The second form of research is the posters students have made. During the conference students will be explaining what research they undertook, what effects were found and what this means to them.

The third form of research is the podium presentation from students who will be sharing their information solely by explaining their research through speeches.

Please support the Undergraduate Research and Scholarship program by visiting the art exhibition in the SUB Art Gallery and by attending the conference on April 16.

OPINION

The way we see it ...

We're all just trying to stay human

Yesterday we celebrated Easter, the happy holiday when we can all buy some candy and there is a bunny that comes and drops off a basket.

How did it come to this? America has fallen so far into an advertising culture that we take a day like Easter and make it into a field day for the economy. We are supposed to be celebrating a big event in the Christian faith. When someone rises from the dead, it seems like everyone else should take notice. Now, we wake up in the morning and search for colored eggs in order to celebrate it. The math simply does not add up.

We take into account different belief systems. Some people may believe in the premise of Easter while others think something different happened. Whatever you believe, if you buy into this "holiday" why do you celebrate it by buying more products?

Always remember that advertisers are out to get you. They do not care how old you are, your gender or your race. They have no humanity when it comes to moving products. They try to form a relationship with you while you're still young and developing so you can nag at your parents more efficiently. Then, when you get older and start making money you will buy their products and feel good about it because it becomes natural.

Take McDonalds for instance. They sell something called the "Happy Meal." As if to say that eating greasy hamburgers and deep fat fried fries will make you happier than before. And McDonalds markets these towards children. They even put a little cheap toy inside the meal so your kids can play after they gorge themselves. This is happening constantly, over the course of many generations and then America wonders why we are so overweight. Take a walk over to Broadway sometime and look at the food options offered. There is nothing particularly healthy and affordable. The only food you can get at a decent price involves quick and greasy service.

If you want to, please celebrate whatever faith, or family or occasion you want to. But remember that you are not celebrating the ability to buy things. You are celebrating the fact that you are alive and healthy. This is a time to get together with loved ones and put aside all the petty differences that life offers. Keep some perspective.

For instance, there was and still is a fairly big stink about some statements made by the College Republicans. Take this opportunity to put that narrow-mindedness into context. The short sighted, off-base, uninformed, typical and oversimplified comments of a few cannot quiet the overwhelming good of the majority of students at Boise State. Stay strong and fight against that which attempts to stave our humanity.

The way we see it is based on the majority opinions of The Arbiter editorial board. Members of the board are Drew Mayes, editor-in-chief; Troy Sawyer, business manager; Heather English, production manager; Dustin Lapray, managing editor; Barry Franklin, opinion editor; Harsh Mantri, online editor and Sheree Whiteley, lead copy editor.

BY MICHEAL J. MCLASKEY
Opinion Writer

SoHo artist creates a chocolate Jesus without a loincloth, and suddenly this is as big as the upside-down broken-armed crucifix in a Mason jar filled with urine. Former head of President Bush's Faith-Based Initiatives sees this Jesus on display and swells with self-righteousness and anger. He shuts the display down.

Which was it: Jesus' genitals, or the fact that he was made out of food? I'd ask if the chocolate makes him look like a black Jesus, but I want to sidestep the question of Jesus' race here for a question regarding conflicting ideology within Christian dogma.

I'm expecting hate mail on this one, but for Catholics out there, don't get offended by a Jesus made out of food—unless communion wafers offend you too. And if the real problem is a display of Christ's package, Christians in this country need to get their understanding into gear. If Jesus

were born a man, he would have been crucified with genitalia; no amount of editing the mythology could change that. The most irksome thing to me is that a Catholic artist did this piece with reverence in mind; if anyone took the time to look at the savior's posture and form before reacting like zealous militants, you'd see it's actually quite a beautiful rendering.

But that's just me; I try not to allow my Christian upbringing to screw with my ideas of natural sexuality, since they're constantly at war. You can't simultaneously honor your body as a temple for God, and at the same time despise it as a disgusting thing with base, fleshly urges. Simply stated, your body can't be both at the same time. A deer is a deer, a fox is a fox, but somehow, a human body can be both pristine in form and disgusting in nature, at the same time.

I believe where this chocolate Jesus anger comes from is the severed psychosexual context that doesn't allow us as Americans to feel right about

our bodies, unless they're some sorts of cistern for an invisible presence we only believe to be there.

After all, we humans as social creatures are pretty stupid, and have concocted reasons for every bad idea we've ever had. This psychosexual disconnect is distinctly American as well; no other culture on Earth tries to both hyper-sexualize its youth, evidenced by T-shirts in the junior miss department of clothing stores that advertise "Young, willing and eager," and then also tell it that physical urges are base expressions of our awful nature. I believe that it's precisely this disconnect which provides for America's high rate of violent crime; not knowing how we feel about something so basic as our bodies, our brains react like schizophrenics, and the results are disastrous.

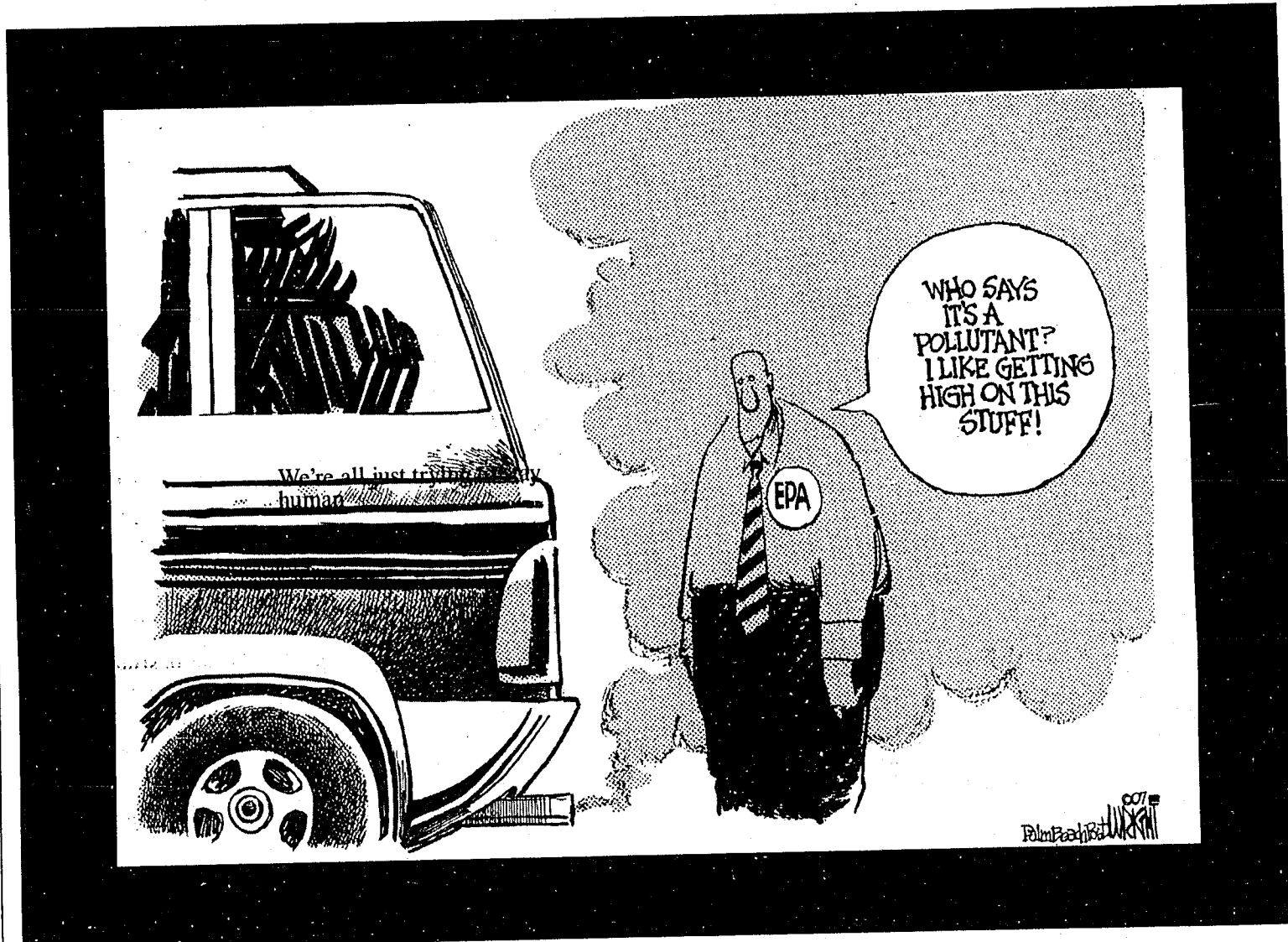
To tell the truth, we don't have a better context to work with. Even though we live in a secular society, the thumb of religious oppression is still there. Just ask the artist who made the chocolate

Jesus - the crusaders who shut down his gallery are making sure he doesn't display Jesus' chocolate genitals anywhere else. We couldn't allow children to see something like this - what would they think? That Jesus was somehow less of a man because he was created from chocolate? Or that Jesus was somehow less than the son of God, because he has genitals? Or maybe the piece is so insidious that it will cause spontaneous and irreversible loss of faith?

Either way, this is a Pope Pius move. Offended by all the nudity in Vatican art, he had most of the paintings and sculptures "fixed," so that the religious pilgrims viewing these pieces of art wouldn't be distracted by their humanity (a.k.a. genitalia).

The lesson I gather from all of this is that when you come to the house of the lord, leave your body behind.

Maybe Mark Twain was right when he said that people ought to start dead; it would sure make that kind of Christian happy, if anything can.



Bird flu strikes Arbiter; editors turn chicken

BY FREDERICK AREHART
Opinion Writer

Like ostriches with their heads in the sand, Arbiter editors duck the hard issues concerning the state of campus dialog.

Arbiter editorials are disturbingly silent on concern for the lack of objectivity in university-sponsored speakers selection. Administrations dumping the problem on student government makes things worse whereas now there is even less accountability.

Campus speakers influence the focus and orientation of the university. Boise State should not allow itself to be politicized. There is no path to respect and learning when knowledge is

filtered through partisanship or political correctness.

Boise State's system of selecting guest speakers is so decentralized as to be chaotic. Individual colleges, departments and campus organizations operate independently and without oversight.

This needs to change. It's too embarrassing. Over the last three years only a mere core of primary source speakers like Hans Blix has presented.

Cutting to the chase, the guest speaker list has been over-weighted with radicals; everything from an apostate ex-nun who writes sloppy, but widely read history to radical feminist Gloria Steinem and radical environmentalist Al Gore. Wish I could list a right-

wing radical (Glenn Beck was closest I came. Sean Hannity would have been one, but Boise State did not sponsor him).

It's not that these people should not have been invited to speak on their specialty as a primary source. The university administration dropped the ball when there was no attempt to bring on campus speakers with differing opinions on the same subjects.

To be true seekers of knowledge and understanding we must be issue-oriented.

Al Franken and Rush Limbaugh are legitimate people to speak on the art and science of developing an audience, but they are not qualified to speak about anything else.

An opinion of theirs on

anything other than talk show marketing is worth spit.

Academic achievement is defined by thorough and objective examination of all perspectives of an issue.

If you doubt that Boise State has real problems here, think again.

The recent flurry of activity concerning the politically motivated fake assault of a gay student is an example of our movement toward politicization. A small number of students failed to take the time to objectively think through the events. These student activists and several mid-level administrators proclaimed to national press that Boise State was unsafe and "oppressive."

Spare me. The hysteria was

whipped into a crescendo and a "rally against oppression" was held.

The university essentially shut down for two hours for what turned out to be a gay rights circus. This was not an exercise in sound judgment.

Politics be damned. Boise State's choices of speakers should be guided by the desperate need for objectivity and inviting only primary sources. I want to learn, not be manipulated. In my opinion the editors of The Arbiter and anyone else who downplays the importance of this issue are irresponsible. There remains a great need for institutionalized objectivity in campus dialog.

I, for one, came to Boise State for education, not politics.

You should know

Guest opinions of no more than 500 words may be submitted for publication on any topic. Letters to the editor must not exceed 300 words and must include the writer's full name, city, state and major (if applicable). All submissions are subject to editing. Both

guest opinions and letters to the editor may be sent via e-mail to letters@arbiteronline.com. The Arbiter cannot verify the accuracy of statements made in letters to the editor; they reflect the opinion of the writers. Opinions expressed by guest and staff

columnists reflect the diversity of opinion in the academic community and often will be controversial, but they do not represent the institutional opinion of The Arbiter or any organization the author may be affiliated with unless it is labeled as such.

THE ARBITER

1910 University Drive
Boise, ID 83725
Phone: 345-8204 (x100)
Fax: 426-3884
www.arbiteronline.com

Distributed Mondays & Thursdays during the academic school year. The Arbiter is the official independent student newspaper of Boise State University and a designated public forum, where student editors make all content decisions and bear responsibility for those decisions. The Arbiter's budget consists of fees paid by the student body and advertising sales. The first copy is free. Additional copies can be purchased for \$1 apiece at The Arbiter offices.

EDITORS

EDITOR-IN-CHIEF Drew Mayes (x105) editor@arbiteronline.com
MANAGING EDITOR Dustin Lapray (x106) mab@arbiteronline.com
NEWS EDITOR Jessica Christensen (x102) news@arbiteronline.com
ASST. NEWS EDITOR Sean Stegall (x102) news@arbiteronline.com
OPINION EDITOR Barry Franklin (x106) @arbiteronline.com
SPORTS EDITOR Jake Garcia (x103) sports@arbiteronline.com
ASST. SPORTS EDITOR Kye Johnson (x103) sports@arbiteronline.com
CULTURE EDITOR Daniel Hadjiloh (x104) culture@arbiteronline.com
ASST. CULTURE EDITOR Franczy Marcotte (x104) culture@arbiteronline.com
EDITORIAL ADVISOR Dr. Dan Morris (x107) advisor@arbiteronline.com

WRITERS

Steve Ahlborn, Frederick Arehart, Claudio Beagrie, Amy Bowman, Matthew Boyle, Tate Castleton, Dale Eisinger, Cassie Gutierrez, Michael McClaskey, Chad Mendenhall, Michelle Milliken, Shannon Morgan, Mei La Rue, Darcie Nutt, Alexander Photnix, Ryan Rasmussen, James Rodriguez, Brianna Russel, Joslyn Salow, Lucinda Sutherland, Charlotte Taylor, Douglass Taylor, Nathan Thomas, Sonia Trevizo and Charity Varner

PRODUCTION

Production Manager Heather English (x110)
Asst. Production Manager Leona Ellsworth (x110)
Senior Designer Steve Norell (x111)
Graphic Designers Erin Smith (x111), Dustin Davis (x111), Brian Evancic (x111)
Copy Editors Sheree Whiteley, Jessica Ekburg, Chandra Lundy

ARBITERONLINE.COM

Online Editor Harsh Mantri
Multimedia Producer Brian Luptak
PHOTOGRAPHY Stanley Brewster, Alice Scully, Richae Swanbeck, Benjamin Peterson

BUSINESS

General Manager Brad Arendt (x101)
Business Manager Troy Sawyer (x117)
Advertising Coordinator Johanna Farrell (x109)
Marketing Director Now Hiring
Bookkeeper Hilary Roberts (x117)

arbiteronline.com

BSU uncovers Mayan culture

BY MAT LA RUE
Culture Writer

Boise State's Anthropology Department held a lecture on the bio-archeology of the Mayan culture this last Wednesday in the Multi-Purpose Building.

Vera Tiesler, from Merida, Mexico (in the Yucatan Peninsula), was the presiding lecturer. She has been studying the bio-cultural practices of the Mayan culture for 15 years and was invited by BSU faculty member Margaret Streeter to give the lecture.

In Mayan culture the rituals and practices of life were very important. To the Maya, religion was everything.

The lecture gave an ample explanation of the cultural aspects of the Mayans, including head shaping, dental decorating and ritual sacrifice. When children were one-to-three-years old their mothers would begin the cosmetic

procedure of head shaping. This practice was always performed by the mother on both male and female children.

This procedure was performed with the use of either a head apparatus made from wood and cloth or by wrapping the child's head. The Mayans believed that in this procedure the aspect of the practice was just as important as the outcome; the apparatus or wrapping supplied a roof over the child's head, protecting them from evil spirits.

The art form of head shaping often reflected a particular family's heritage, different families, royal status and often portrayed a particular style.

It was something of a family emblem. Risks were involved in the practice of shaping a young child's head, particularly mortality. However, this outcome was not seen as tragic to the Mayans but simply another aspect of life.

Another cosmetic procedure carried out by the Mayans was the shaping and inlaying of the teeth. This practice of dental decoration was popular for both men and women.

However, different dental alterations often corresponded to gender and class.

While almost everyone participated in this practice, the filing of teeth was more appropriated to women, while the inlaying of teeth with jewels corresponded with men. In the man's world the dental decoration became a status symbol. While almost everyone practiced it, royals tended to have more lavishly-gemmed teeth.

Another aspect of the Mayan culture, which is commonly perceived but not fully understood, is ritual sacrifice. Mayans conducted human sacrifices as a ritual communion with the gods through the destruction of life, beheadings and heart ablation or the removal of

the heart. Tiesler and other archeologists have been able to decipher pre-mortal violence in corpses found in the Mayan area including unhealed stabs, wounds, blows, bone fractures and fire exposure.

An aspect of sacrifice, which you may have heard of, was the ball game they played in which the winners were sacrificed.

This game, known as "Cenote Sagrado," was a mass of ritual violence and sacrifice. It was something of a warrior cult and captive sacrifice. As a receptacle for victims, this game claimed more than 300 victims.

Though the Mayan culture may be perceived as somewhat primitive and violent, this is not the case.

Mayans were very sophisticated for their time. While head shaping and sacrifice may have lost their place in contemporary life, dental alterations are still in effect.

500 West Idaho Street, Downtown Boise 208.345.4320
1314 2nd Street South, Downtownampa 208.487.5533

When your car won't start...

208-323-9292
10% discount for BSU students

Call us **Blaz N Diagnostics**

I HAVE OVERCOME PROCRASTINATION

I will work with you to teach you, on-site, how to overcome this habit!
Stress, anxiety, guilt and cramming will become things of the past within 2-3, 25-minute sessions; I work on-site with you.
No charge for the initial interview. Ongoing help. Call - Jake, at 850-1845

Fettuccine Forum meets to discuss public art

BY MATTHEW BOYLE
Culture Writer

Sparkling lights weaved in and out of glistening white cloth draped from the rafters in the Rose Room in the Union Block Building in downtown Boise.

A large buffet of refreshments awaited attendees to the Fettuccine Forum's discussion of appreciation of public art.

The Fettuccine Forum meets regularly to discuss amenities and positive additions to the Boise community.

Last Thursday, April 5, the Fettuccine Forum met to debate Boise's public art situation and inform those in attendance of the upcoming proposals of additional public art in Boise.

Karen Bubb, a home-grown Idahoan and currently the executive director of the Boise City Arts Commission, was the keynote

speaker of the event. Bubb graduated from the University of Oregon in 1990 with a Bachelor of Fine Arts Degree.

She worked for non-profit art organizations in New York and Oregon until 1997, when she returned to her home state of Idaho.

She began her presentation with a description of what public art means, what could be considered public art and a Power Point slide show with pictures of existing public art in Boise.

"Public art is a multiplicity of things - it tells us about our community," Bubb said time and again during her presentation.

One thing public art, according to Bubb, is "a symbol that we want you to do something."

Some of the pieces of public art here in Boise are seen by many people each day and taken for granted.

Public art is a multiplicity of things - it tells us about our community.

- Karen Bubb,
Boise City Arts Commission
executive director

For instance, a public artist was contracted by the city of Boise to construct the leaf cement tiles downtown.

Another meaning for public art, according to Bubb, is "[To create] little pockets in our urban landscape that have meaning."

Bubb also insisted that just because the meaning of a piece is unknown, does not make it insignificant.

The city of Boise, whenever beginning a city-funded project, sets aside 1.4 percent of the funding for public art at the site.

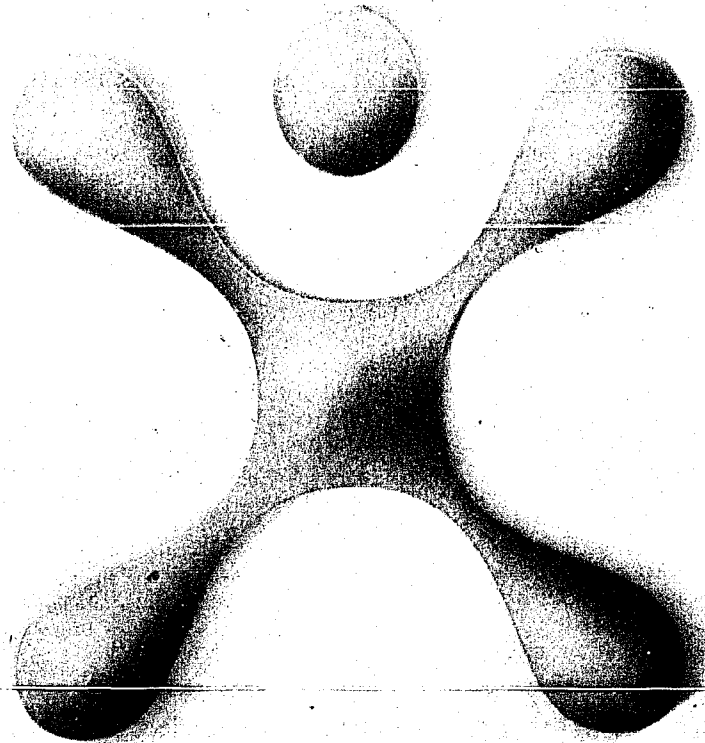
Bubb also said that local business owners and the city of Boise

like to "engage people who are not necessarily thinking about themselves as artists," such as children or graffiti enthusiasts.

The presentation continued with an artists' panel, consisting of three more public artists from Boise. Ward Hooper, Kerry Moosman and Elizabeth Wolf all informed the audience of their major projects in Boise and what they plan to do next.

The Fettuccine Forum had the chance to ask the artists a few questions, mostly about upcoming work and the process of deliberation necessary to put public art in Boise.

BSU STUDENTS AND STAFF
Receive 15% Off
Your Monthly Bill



CINGULAR WIRELESS
Visit us across the bridge in
BODO across from Edwards Theater
208.344.1224

cingular
Authorized Retailer

'Grindhouse' gives audiences a retro experience



Rose McGowan and Bruce Willis star in "Grindhouse," Quentin Tarantino and Robert Rodriguez's double showing featuring zombies and campy commercials.

BY ROGER MOORE
The Orlando Sentinel

It comes from such a pure place and finishes with such a rush that you have to cut "Grindhouse" all sorts of slack.

This lurid, obscenely long homage to the cars, corpses and copulation Z-pictures of the 1970s captures the cheese, the verve and the movie lover's reverence for the medium that was evident in the original "grindhouse" movies, films catering to an unsophisticated audience in an era when mass movie-going was in danger of fading away.

Quentin Tarantino, who provides that final flourish to this double feature with the climax to his road-wrecking ride, "Death Proof," goes for the jugular, the carotid and superior vena cava in his imitation of the lowbrow thrills that made him America's great grindhouse holdout.

What he went for here is nothing less than a revival of what it means to be young and itching for that next cheap thrill that only an over-the-top action picture or horror film can provide.

Three hours and 11 minutes of movies, previews, vintage interstitials (the snack bar plugs and "our feature presentation" announcements) take you back to what it meant to sit through a "grind," a continuously showing presentation at a seedy downtown theater or drive-in.

"Grindhouse" pairs Robert Rodriguez's "Night of the Living Dead" zombie-movie knockoff, "Planet Terror," with Tarantino's ode to tough-talking chicks and Dodge Challengers "Death Proof."

The Tarantino picture has a couple of terrific performances (Kurt Russell and Zoe Bell) and stunning car-stunts.

But the Rodriguez movie, all gore, over-the-top violence and goofy one-liners, feels like the real grindhouse contender here.

"Planet Terror" is about a viral agent that turns first troops stationed in the Middle East, then the folks back home, into flesh-eating/flesh-eaten zombies.

Rose McGowan is the pole-dancer who sees her stand-up comedy career wrecked when she loses a leg to these freaks.

Freddy Rodriguez is El Wray, the avenging angel ex-boyfriend and tow-truck driver who wants to

save her. C-actors Jeff Fahey, Michael Biehn, Michael Parks and Josh Brolin chew through the scenery and each other in a bid to save themselves and others.

Brolin, as an emergency room doc faced with a cheating wife (Marley Shelton) and a hospital filled with gaping virus wounds, opts for marital revenge, in between blunt bedside moments with patients.

"We gotta lose the arm, Joe." McGowan, as "Cherry Darling," ends up replacing a leg with an automatic weapon, which puts her dance skills to good use.

But being newly legless doesn't keep her character from adventures in the sack, another staple of the grindhouse.

There must've been a worldwide fake-blood and brain fluid shortage when Rodriguez filmed this thing, Messy.

Tarantino's film is a sadistic ode to muscle cars and "organic" movie stuntwork that shows just how much is missing every time Nic Cage ducks a digitally created Chrysler.

This is real rending steel and

See Grind [page 7]

FORNICATION
FORUM

Dear Fornication Forum,

My boyfriend and I have been together for a while now and are ready to take our relationship to the next step and try oral sex. I've never done it before and I'm nervous about doing it wrong. What should I know first about oral sex and what type of risks am I exposed to while doing this?

Sincerely,
Ms. First Timer

Dear Ms. First Timer,

You said you were ready to take the next step in your relationship but you are nervous and before you go further you want to find out more information. Good for you for being responsible and wanting to be informed about your sexual health choices.

Nervousness may be a sign that you're not ready and may want to wait. Rushing into a situation or acting prematurely, when you are not sure what you are doing, may cause emotional distress and in some cases a little psychological trauma. Doing something for the first time always changes the context of a relationship, brings more responsibility to the relationship, facilitates a deeper level of trust and creates a new level of intimacy and meaning.

I would take a self-inventory and ask yourself (maybe even include your boyfriend) a few more questions. Are both you and your boyfriend emotionally, physically and psychologically ready for this?

Remember, it has to be right for both of you, not just one of you. Do you feel you are and have been maturing in your sexuality and are now at a place where you can make a responsible choice? What is the direction of your relationship with your boyfriend? Is it casual or serious? Those are just things to consider.

Physical and emotional health are not separate issues. If you have other questions or concerns, speaking with your doctor or a trusted friend or family member may help. Health care professionals can offer advice about emotionally and sexually healthy relationship choices.

Is there a risk? Yes, and many. HIV is a risk, as well as infection from the sexually transmitted diseases that are normally transferred during intercourse; these organisms can also be transferred during oral sex. Chlamydia, gonorrhea, syphilis, herpes simplex virus are the most commonly transferred sexually transmitted diseases.

Pathogens from the bowel or bladder such as yeasts, enteric (gut) bacteria such as salmonella or e-coli and other infectious agents such as Hepatitis can be acquired during oral sex. The risk of infection is not just limited to men; infectious organisms can be transferred between both sexes. These organisms can infect your nasal passage, mouth, throat, gum line and if you have a cut in your mouth the organisms can be transferred to the blood stream and once in the blood stream can travel throughout the body infecting other tissue and organs.

If you decide that you are having oral sex, take preventive measures. Before you have oral sex, or before you have intercourse with a new partner, the first thing you should do is talk to a medical professional about HIV and STD testing. These tests can be done via a blood test and your doctor can order those tests for you.

Another suggestion to reduce the transfer of bacteria and germs is to practice good hygiene.

My last words of advice are rooted in my first: Make sure you are emotionally, psychologically and physical ready to take the step. You have your entire life to enjoy intimacy. Be educated and make good decisions to protect your emotional and sexual health.

***All questions sent to "Fornication Forum" are answered in a professional, respectful manner and researched by trained medical professionals, while written up and edited by The Arbiter's culture section staff. To submit your own sexual health related questions, e-mail them to culture@arbiteronline.com, with the subject "Fornication Forum." All e-mails will be kept anonymous to respect the privacy of those individuals.

Grind

[from page 6]

burning rubber, as an aged, scarred stuntman (Kurt Russell, hilarious and iconic) takes out his frustrations on women by wrecking them in his vintage muscle car.

As in "Kill Bill," Tarantino matches lethal, grizzled male action stars with empowered tough girls (Rosario Dawson, Tracie Thoms and stunt-woman Zoe Bell) who sputter lots of Tarantino tough-talk, none of which is printable here.

Tarantino still can't act a lick. The music (Tarantino's soul and classic-rock picks) and cars are dated. The directors ogle and objectify the women, even the empowered ones, in the worst grindhouse tradition.

Both features are far too long, with Tarantino's set-up for "Death Proof" tarted-up women talking

dirty and drinking in an Austin bar right on the edge of interminable.

But the gag "prevues" are a hoot with Rob Zombie's "Werewolf Women of the S.S." and Rodriguez's "Machete" (starring his battle-scarred muse, Danny Trejo) promising enough to become real grindhouse sequels.

You go to "Grindhouse" for the same reasons people went to the original grindhouses: primal, visceral action and primal, visceral sex (wait'll you see how that's handled).

Nobody ever went for the acting or "the art."

You may not buy into Tarantino's ex-video store clerk thesis, scripted into the lines of a couple of characters, that movies from "Piranha" to "Vanishing Point," "Black Caesar"



PHOTO COURTESY MCT

to "White Line Fever" were "classics," the "greatest American movies ever."

But you'll certainly connect with their appeal. The critical favorites of the '70s

may endure, but the high-energy junk playing at the drive-ins was anything but a grind.

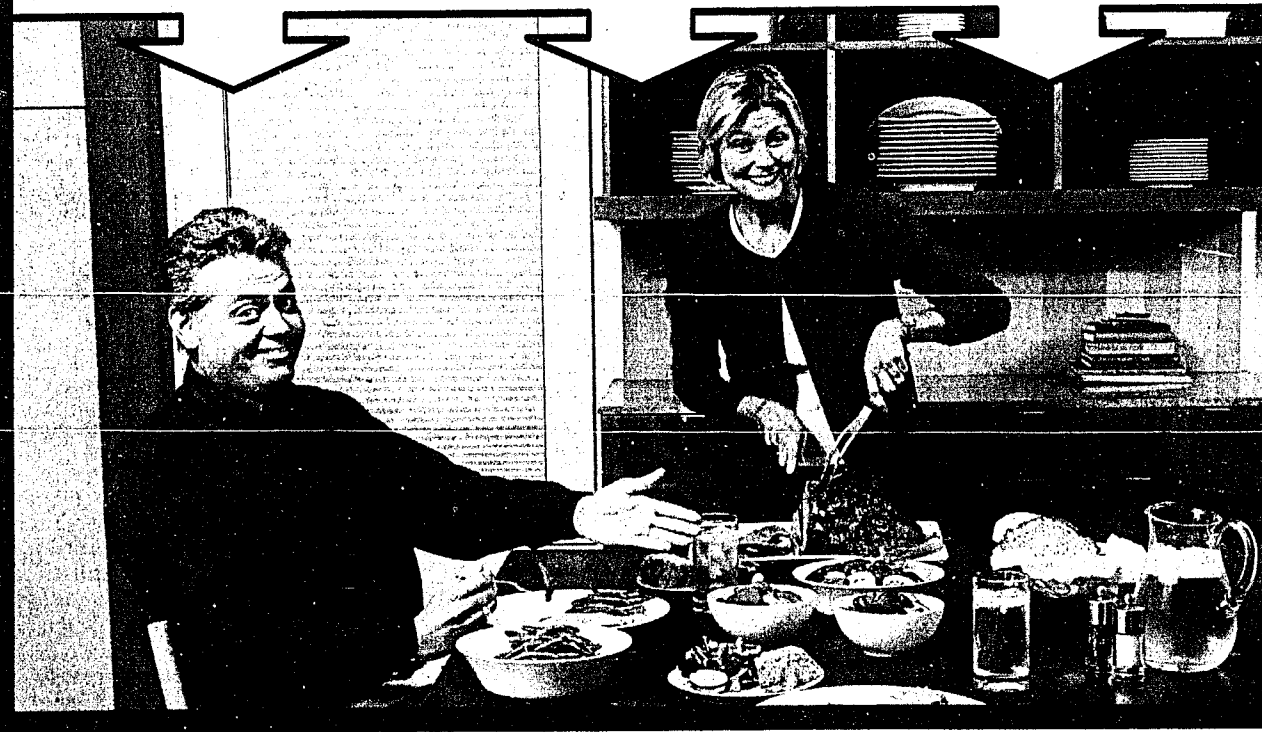


\$49 to \$179

ONE-WAY WITH 14-DAY ADVANCE PURCHASE

Fares do not include a federal excise tax of \$3.40 per takeoff and landing.

WHEN YOU PURCHASE AT SOUTHWEST.COM®



Wanna get away? Now you can. Fly Southwest Airlines for just \$49-\$179 one-way when you purchase at southwest.com. Be sure to purchase your ticket at least 14 days in advance and by April 12, 2007. Seats are limited. Fares may vary by destination and day of travel and won't be available on some flights that operate during very busy travel times.



Fares do not include airport-assessed passenger facility charge (PFC) of up to \$9 and a federal September 11th Security Fee of up to \$5 one-way per person. Published service only. Some flights operated by ATA Airlines. Tickets are nonrefundable but may be applied toward future travel on Southwest Airlines. Fares are subject to change until ticketed. Any change in itinerary may result in an increase in fare. Fares are combinable with other Southwest Airlines fares, excluding Senior Fares. If combining with other fares, the most restrictive fare's rules apply. Fares not available through Group Desk. Service to and from Hawaii excluded. Florida service available after 4/23/07. ©2004, 2007 Southwest Airlines Co.

HAVE YOU DOWNLOADED **DING** YET?

It delivers our hottest deals directly to your desktop. Get it at southwest.com.

Some Places We Fly:

- Albuquerque
(Just an hour away from Santa Fe)
- Austin
- Baltimore/Washington (BWI)
- Boston (See Manchester or Providence)
- Chicago (Midway)
- Denver
- Ft. Lauderdale
(22 miles to downtown Miami)
- Harlingen/South Padre Island
- Las Vegas
- Long Island
- Los Angeles (LAX)
- Manchester
(A better way to Boston)
- Miami (See Ft. Lauderdale)
- Oakland
(18 miles to downtown San Francisco)
- Orlando
- Philadelphia
- Phoenix
- Providence
(A better way to Boston)
- Reno/Tahoe
- Salt Lake City
- San Diego
- San Jose
(San Francisco South Bay Area)
- Seattle/Tacoma
- Tampa Bay
- Washington Dulles International
- West Palm Beach

Service may not be available from all cities. Available on published service only.

SPORTS

[THIS WEEK IN SPORTS]

Football
Friday
Blue and Orange Game
6 p.m.
Boise

Gymnastics
Saturday
NCAA Regional Championships
TBA
Berkeley, Calif.

Men's Tennis
Saturday
Fresno State
10:30 a.m.
Boise

Utah State
6 p.m.
Boise

Women's Tennis
Thursday - Sunday
Boise State Spring Classic
TBA
Boise

Track and Field
Saturday
Brutus Hamilton Invitational
TBA
Berkeley, Calif.

[SIDE LINES]

ESPN announces WAC, BSU football coverage

The Western Athletic Conference announced last week a 10-game ESPN/ESPN2 football television schedule for 2007 with Boise State taking part in half of those games. The schedule kicks off with 2007 Fiesta Bowl Champion Boise State hosting Southern Mississippi on Thursday, Sept. 27 in a game that will be shown on ESPN.

The five national television games in the 2007 season will run Boise State's number of appearances on either national or regional network television to 40, with 27 of them coming as a member of the WAC.

The Broncos boast an impressive 26-9 record in those games.

Following is a complete list of the WAC's games on ESPN/ESPN2 during the 2007 season.

2007 WAC ESPN Television Schedule

Sept. 27, Southern Mississippi at Boise State, ESPN, 5:30 p.m. MT
Oct. 7, New Mexico State at Boise State, ESPN, 6:00 p.m. MT
Oct. 12, Hawaii at San Jose State, ESPN, 5:00 p.m. PT
Oct. 14, Nevada at Boise State, ESPN, 6:00 p.m. MT
Oct. 26, Boise State at Fresno State, ESPN2, 6:00 p.m. PT
Nov. 2, Nevada at New Mexico State, ESPN2, 6:00 p.m. MT
Nov. 16, Hawaii at Nevada, ESPN2, 8:00 p.m. PT
Nov. 23, Boise State at Hawaii, ESPN2, 4:00 p.m. HT
Nov. 24, Kansas State at Fresno State, ESPN or ESPN2, TBA
Dec. 1, Washington at Hawaii, ESPN or ESPN2, TBA

Boise State University wrestlers receive All Academic honors

The Pac-10 Conference has announced its academic honors for the 2006-07 wrestling season and three Boise State University wrestlers have earned recognition for their efforts in the classroom this past year. Luke Smith, Jeff Newby and Andy Patrick earned the awards with Smith being named to the first team squad, Newby the second team and Patrick receiving honorable mention honors.

A freshman from Idaho Falls, Idaho, Smith has a 3.88 grade point average in biology.

He started the year competing for the Broncos in the 165-pound weight class, but finished the season competing at 184 pounds.

Newby, a freshman from Brigham City, Utah, was named to the second team with a 3.63 GPA in general business management.

A sophomore from Boise, Idaho (Meridian HS), Patrick has a 3.09 GPA in entrepreneurial management.

He recently completed his second year in the starting lineup for the Broncos with an overall record of 32-10 in the heavyweight division.

Scrimmage showcases defense

BY KYE JOHNSON
Assistant Sports Editor

Marty Tadman had two interceptions during the second Boise State football scrimmage of the spring on Friday afternoon to go along with an overall strong defensive team performance for the Broncos.

One of those interceptions was run back for a touchdown, very reminiscent of Tadman's touchdown return against Louisiana Tech, October 7, of last season, where Tadman intercepted a pass from Bulldog quarterback Zac Champion and returned up the visitors sideline for a 98-yard touchdown.

"I'm trying to practice so I can at least get a 100-yarder next season," Tadman said with a smirk on his face.

Tadman intercepted freshman quarterback Michael Coughlin both times, accounting for two of the three picks the defense forced on the day. The other was picked off by linebacker Tim Brady who scampered 40-yards for his own defensive score.

"It was a lot less sloppy than last week," Tadman said about the defense's play. "The secondary is taking steps in the right direction, especially the younger guys. I think it's great to just come out here and watch the younger guys mature. Watching them learn the defense more and the offense more to just make plays more consistently. So I think that's what spring ball is all about, is to see who is going to be more consistent so we can see who is going to be that guy to step up and make the play."

Without Ian Johnson the Boise State running game looked lost. The Broncos tallied just 50 rushing yards on 20 carries, averaging 2.5 yards per carry. Wide



PHOTO BY BENJAMIN PETERSON/THE ARBITER

Senior safety Marty Tadman intercepted two passes Friday and returned one 98 yards for a touchdown.

receiver Aiona Key led the team in rushing after a 29-yard reverse early in the scrimmage.

In the four-way race for the starting quarterback position senior Taylor Tharp had the best day.

Tharp, who has been considered a little inconsistent lately, was anything but that on Friday afternoon. He ended the scrimmage 9-for-11 for 122 yards, two touchdowns and no interceptions. Junior Bush Hamdan threw the second most passes on the day with eight. Hamdan completed five of them for 34 yards, zero touchdowns and an interception that Brady ran back for a touchdown.

Coughlin had the toughest day out of the four quarterbacks, as he only dropped back to pass six times. Five of his passes were caught. Unfortunately for Coughlin two of them were caught by the defense. Sophomore Nick Lomax was 3-for-3 for 30 yards according to stats by Bronco Sports. Lomax had zero touchdowns and zero interceptions.

Although Lomax threw the least amount of passes, he still felt confident about the way he played.

"I can't control whether the guy catches it or not," Lomax said. "If I made the right read and the right throw then I'm happy with that. Because I know in the game those guys will catch it for me and I know that they will come through and make a play for me because that's what I'm doing for them, trying to make a play. I felt good out there today and made some good throws and I'm excited about where things are headed."

Next Friday will be the team's Blue and Orange Spring game. For Tadman and the defense it's one last opportunity this spring to make an impact.

"For the younger guys, I think it will be huge just to get out here in front of a crowd at night and really prove what they've got," Tadman said.

The game is scheduled for 6 p.m. in Bronco Stadium.

The view from up here



Here's to a dying breed

BY JAKE GARCIN
Sports Editor

I feel like a cynic, but college athletics is not what I thought it was. People often focus on the negatives in the world of college athletics, but it's typically from an aspect of drugs, alcohol or sexual mishaps with athletes. After last Friday, however, I've begun to realize the true heart of my cynicism comes from coaching.

College basketball coach Bob Huggins jumped ship from Kansas State to West Virginia just 387 days after taking the job in Manhattan, which is faster than a person can become a resident in the State of Kansas. Huggins spent the most notable part of his career as the head basketball coach at Cincinnati. He is remembered for embarrassing graduation rates and a 2004 DUI that finally got him fired by the Bearcats.

In 2005 Huggins was relinquished from his duties by Cincinnati and after a season off he was hired to revamp the struggling KSU program. Huggins did just that, leading the Wildcats to a 23-12 record and a NIT berth in his only season at the school. More importantly, however, Huggins recruited some of the best talent in KSU history with hopes of building a Big 12 powerhouse program.

Huggins' first prized recruit - Bill Walker of Cincinnati, Ohio. As a junior at North College Hill High School Walker verbalized his desire to play for coach Huggins, no matter where he was coaching at. When Walker was ruled ineligible to play high school hoops last summer he opted to earn his diploma early and follow Huggins to KSU to help build the program.

Walker (6'6", 225) was forced to sit out the fall semester to gain eligibility at KSU. In December he began playing for coach Huggins but his season would end as soon as it began. Walker suffered a knee injury only a few games into his season and missed the entire rest of the year because of it.

After a carousel of misfortune Walker's basketball world appeared to be at its lowest point, that is until coach Huggins announced he was leaving Walker and Manhattan behind to return to his alma mater - West Virginia.

He forgot Walker, the KSU players and his six-year commitment to the community. Huggins saw a window of opportunity to better his life and took it, similar to the actions of former University of Idaho coach Dennis Erickson. Erickson jumped on the Vandals twice, and (surprisingly enough) I feel bad about the second time.

Sound familiar? It should. How about Dirk Koetter and Dan Hawkins? More importantly, how about Chris Petersen? While Koetter and Hawkins left small potatoes behind for big, exciting ventures, Petersen fell into one of the most exciting college football coaching jobs in the country. After winning the Fiesta Bowl Petersen naturally signed a bigger contract with Boise State, but not before deferring money to his assistant coaches to give dap for their job well done.

Maybe Petersen isn't the only last good coach out there and maybe I am just a cynic, but I find it hard to put faith in too many college coaches these days. You know what separates guys like John Wooden, Mike Krzyzewski and Eddie Robinson from the rest of the pack?

They stick with a university long enough to not only establish dominating sports teams, but more importantly, build a reputation as great men and produce even greater ones. Here's to a dying breed of true coaches - the good guys of college sports.

Boise State 2007 Spring Scrimmage - #2



Scoring

Tanyon Bissell, 41-yard touchdown pass from Taylor Tharp
Tim Brady, 40-yard interception return (no kick attempted)
Jeremy Avery, 6-yard touchdown pass from Tharp (Brotzman kick)

Passing

	Cmp	Att.	Yds	Tds	Int
Bush Hamdan	5	7	34	0	0
Taylor Tharp	9	11	122	2	0
Michael Coughlin	3	6	58	0	2
Nick Lomax	3	3	30	0	0
Totals	20	27	244	2	2



PHOTO BY BENJAMIN PETERSON/THE ARBITER

Rushing

	Att.	Yds	YPC	TD
Jarvis Hodge	6	5	.8	0
Bush Hamdan	1	-4	-4.0	0
Jeremy Avery	7	10	1.4	0
Aiona Key	1	29	29.0	0
Nick Lomax	1	-1	-1.0	0
Michael Coughlin	2	1	0.5	0
Taylor Tharp	1	7	7.0	0
Jeremy Childs	1	3	3.0	0
Totals	20	50	2.5	0

Receiving

	Rec.	Yds	Tds
Jeremy Avery	3	32	1
Nick Harris	3	30	0
Evan Surratt	3	21	0
Tanyon Bissell	2	50	1
Jeremy Childs	2	49	0
Julius Hawkins	2	13	0
Jarvis Hodge	1	18	0
Aiona Key	1	12	0
Totals	20	244	2

Men's tennis sweeps Montana State, LMU

BY TATE CASTLETON
Sports Writer

The Boise State men's tennis team never underestimates an opponent. It's this mentality that helped the Broncos win big last Saturday as they swept both Montana State and Loyola Marymount 7-0 at the Appleton Tennis Center. The red-hot Broncos (23-5 overall) have won 15 of their last 16 matches including the last seven in a row and are ranked No. 20 in the nation.

"We cannot overlook any teams we play," Head Coach Greg Patton said. "We've got to go into every match treating every team with the up-most respect as if they're King Kong."

With beautiful weather on their side it did not take the Broncos long to dismantle a weak Montana State (4-15 overall) squad. In its five losses this season Boise State has failed to pick up the doubles point in the early going, but the Broncos are determined that same mistake won't happen again.

It certainly didn't Saturday as a talented Bronco squad made quick work of Montana State and Loyola Marymount.

Squaring off at the No. 3 doubles spot against Montana State, Stanley Sarapanich and Brent Werbeck cap-

tured their first doubles victory on the season as they ousted Justin Hauk and Igor Vuckovic 8-4.

Sarapanich and Werbeck were followed by Blake Boswell and Eric Roberson, who clinched the doubles point by knocking off David Kovas and Miles Perkins 8-2.

The win locked up the pairs team, leading 13 doubles victory in dual match play and their 18 overall.

Meanwhile, at the No. 1 position Clancy Shields and Steve Robertson capped off doubles play as they slid past Jakob Dybala and Kyle McDonald 8-5. Shields and Robertson have been tough to beat this season having won six of their last seven doubles matches.

"There is no better way to get better than to compete," Patton said. "We're ready to compete. We're so deep we're like an oil well in Texas. I can throw anybody in and we compete well. It doesn't matter who it is, we're just ready."

The Broncos took that depth into singles with a 1-0 lead. At the No. 4 spot Brent Werbeck got the ball rolling, breaking his opponent Igor Vuckovic's serve six times through two matches and winning in near-perfect fashion 6-0 and 6-0.

At the No. 5 position Stanley Sarapanich flew past David Kovas 6-1 and 6-2, breaking his opponents

serve five times over two matches. Piotr Dilaj took control and remained at the No. 1 spot (4-0) and clinched the match point for Boise State ousting Jakob Dybala 6-4 and 6-1 to collect his 19th victory of the season.

"The guys played with poise and never looked back," Patton said. "They just keep playing their hearts out."

BSU never lost that focus in Saturday's afternoon match-up with Loyola Marymount.

The Broncos battled wind, rain and overcast skies through much of the match but eventually surrendered to the pouring rain and moved to the Indoor Tennis Facility to finish off LMU (6-13 overall), 7-0.

In doubles at the No. 1 spot Clancy Shields and Steve Robertson got things underway beating Sam Tadovesian and Jacek Twarowski 8-2 to improve their record to 4-4 as a pair. At No. 2 Piotr Dilaj and Eric Roberson clinched the doubles point for BSU as they cruised past Nick Perez and Matt Phillips 8-3. Blake Boswell and Stanley Sarapanich finished things off with a win of their own over Renzo Maggi and Nico Terrien 8-3.

"The future is so bright for this program," Patton said. "We're excited with the way each of our guys,

young and old, come out and play with such passion and precision."

The Broncos took that passion into singles play, up 1-0 on LMU.

At the No. 4 spot Eric Roberson collected his seventh consecutive match this season, beating Nikola Petrov 6-3 and 6-2.

Brent Werbeck was not far behind at No. 5 as he topped Matt Phillips 7-6 and 6-1 to win his fifth consecutive match. Steve Robertson finished off the afternoon in remarkable fashion, ousting Jacek Twarowski 4-6, 6-3 and 10-7 to help the Broncos remain perfect on the day.

"It's exciting because we feel like we are on track toward becoming a national championship caliber team," Patton said. "We're happy with the win today and only hope to keep getting better."

The Broncos will have a chance at their eighth consecutive victory next weekend when they meet up with both Fresno State and Utah State University on Saturday, April 14 at the Appleton Tennis Center.

"Fresno is obviously a big rival," Patton said. "They've been struggling this season, but they still have a chance to compete at the NCAA tournament. Their only chance to go, though, is by beating us - so you can bet they will be ready and so will we."

The REC center adventures outdoors

BY ADAM ADER
Sports Writer

The Boise State Student Recreation Center's Outdoor Program is ready for the summer season. The Outdoor Program's main focus this spring is going to be on white water river rafting. The program staff continues its Wednesday Night Adventure Series on April 11 with a free info session called Trip Planning for Multi-Day River Trips.

Jesse Sears is the outdoor coordinator. He has 14 years of commer-

cial guide experience and plans on using his knowledge to teach groups that are going out onto the river to function in the best possible way.

"We have a lot of people coming and starting to plan their trips for the year," Sears said. "And these three courses are set up in that fashion to facilitate those different groups to work through their different logistical problems and come out with the best trip possible."

In the first session Sears and the outdoor crew will be teaching students attending the basic logistics of multi-day rafting trips like trans-

portation, land management regulations, shuttles and equipment rentals. They will even share some site-specific knowledge like where the best camping spots are and hiking areas on the section of river you're floating.

"It includes everything from logistics of shuttles to logistics for group dynamics," Sears said. "To who's responsible for packing kitchens, to who's responsible for rigging the boats, to who's the on-water expert. It helps people organize and get their trip on the water."

The second session on April 18

will cover raft rigging. They will talk about how to rig flip lines and what to do if your boat flips over. It will teach you how to protect yourself in an unexpected emergency.

The third session covers cooking in the outdoors. This clinic is going to teach kitchen safety. Sears emphasizes that it's not just about cooking the food you have on a trip, it's about everything that goes along with it.

"We're going to talk about the different systems like hand wash systems," Sears said. "How do you deal with your garbage on a trip? We're

going to have a backpack kitchen set up and talk about how you work with the equipment. We're going to go over different emergency scenarios. Let's say your stove isn't working. We're going to talk about how to clean the jets on different stoves."

The Outdoor Center offers many different courses that are inexpensive throughout the entire year. Courses include avalanche safety, wilderness survival courses and skill building courses like climbing.

They also offer raft trips, back-

packing trips, ski trips and many other adventurous outdoor opportunities.

"Outdoor opportunities provide our students with the ability to: one, grow individually and two, to build a community," Sears said. "You learn about yourself and you learn about your friends. It's really just about having fun and discovering what's out here and what's available for us in Idaho. Idaho's probably one of the most diverse states that has our type of country and all the different recreational opportunities."

Track and field splits with Idaho State University

BY MICHELLE MILLIKEN
Sports Writer

The Boise State men and women's track teams gave Bronco fans their first taste of the 2007 outdoor season when they faced off against Idaho State in a dual meet last weekend in Bronco Stadium.

The Broncos had a number of regional-qualifying distances in the field events Saturday. In the javelin Scott Viafore qualified with a throw of 232 feet and 6 inches, Pontus Thomee qualified with a throw of 217 feet and Nate Putnam rounded out the javelin qualifiers with a throw of 212 feet and nine inches. The three finished first, second and third in the event.

In the hammer throw Jarrod Stevens' first place throw of 218 feet and eight inches and Simon Wardhaugh's second place throw of 215 feet and eight inches were both

qualifying marks as well. Finally, Wendell Lawrence qualified in the triple jump with a leap of 49 feet and 7.25 inches.

Performances like these helped the men edge out Idaho State 87-67.

"Today was very good," BSU Head Coach Mike Maynard said. "We had a lot of great things happen. On the men's side, we were pretty dominant. It was a good example of the strength of our men's team."

The women lost to Idaho State 90-64, but they had several regional qualifying marks to brighten the day.

Elena Kafourou competed in her first outdoor meet of the season and won both the long jump (19 feet, 9.5 inches) and triple jump (42 feet, 4.75 inches). She managed to get qualifying marks in each event.

In the women's hammer throw Annika Hjelm broke the school record for the second time this year

when she won the event with a throw of 206 feet and one inch.

This mark is also the third best all-time in her home country of Sweden and yet another regional qualifier.

To round out the qualifiers, Eleni Ypsilanti also qualified in the hammer throw with a toss of 190 feet and six inches.

"On the women's side, although we didn't win, we did a good job," Maynard said. "We won eleven events, and depth was kind of an issue. We did enjoy the meet. There was beautiful weather. The dual was also a nice change from all the invitationals we've been having."

This coming weekend the Broncos will split up according to events and go to a few different meets, but the majority of the team is headed to Berkeley, Calif., for the Brutus Hamilton Invitational.

The last home meet of the season

will be on April 27.

"We have a Friday night meet here in a few weeks that'll be fun,"

Maynard said. "We want to highlight our seniors that night. We may have several weeks of competition

left after that, but it'll be their last opportunity to shine at home. We hope we can make it big for them."

Track Dual Results

State, 46.8m. 5, Carrie Talbot, Idaho State, 41.25m.

Javelin Throw

1, Cassie Merkle, Idaho State, 43.68m. 2, Jackie Poulson, Idaho State, 41.6m. 3, Audra Smith, Idaho State, 41.58m. 4, Amanda Janowitz, Idaho State, 37.95m. 5, Tiffani Wilson, Idaho State, 31.8m.

Men

100 Meter Dash
1, Marlon Douglas, Boise State, 10.84. 2, Johnnie Poole, Boise State, 10.92. 3, Ryan Dick, Idaho State, 10.96. 4, Nick Cunningham, Boise State, 11.03.

200 Meter Dash

1, Marlon Douglas, Boise State, 21.91. 2, Ryan Dick, Idaho State, 22.04. 3, Nick Cunningham, Boise State, 22.04. 4, Johnnie Poole, Boise State, 22.19. 5, Jon Dalley, Idaho State, 22.54.

400 Meter Dash

1, Sean Chaney-Waller, Boise State, 48.18. 2, Matt Brown, Idaho State, 48.61. 3, Kyle Christoffersen, Boise State, 48.72. 4, Jon Dalley, Idaho State, 49.85. 5, Josh Hansen, Idaho State, 50.97.

800 Meter Run

1, Saheed Khan, Idaho State, 1:53.63. 2, Dean Connert, Idaho State, 1:53.73. 3, Kol Henrikson, Idaho State, 1:54.41. 4, Matt Schmasow, Boise State, 1:54.94. 5, Cody Eaton, Boise State, 1:56.20.

1500 Meter Run

1, Ty Axtman, Boise State, 3:53.4. 2, Saheed Khan, Idaho State, 3:54.51. 3, John Ricardi, Idaho State, 4:00.21. 4, Tysun Rickards, Idaho State, 4:02.61. 5, Derek Wanders, Boise State, 4:07.35.

3000 Meter Run

1, Forest Braden, Boise State, 8:47.86. 2, Brandon Christoffersen, Boise State, 8:58.71. 3, Matt Nelson, Idaho State, 9:00.09. 4, Landen Teeter, Idaho State, 9:04.76. 5, Brandon Teeter, Idaho State, 9:11.47.

110 Meter Hurdles

1, Sterling Small, Boise State, 14.34. 2, Brandon Graef, Idaho State, 15.34. 3, Dmitriy Beresnev, Idaho State, 15.78. 4, Marc Bybee, Boise State, 15.98. 5, Brad Silvester, Idaho State, 16.06.

400 Meter Hurdles

1, Sterling Small, Boise State, 52.61. 2, Jon Delbosque, Idaho State, 55.98. 3, Marc Bybee, Boise State, 56.16. 4, Brian Archfield, Boise State, 56.28. 5, Brandon Graef, Idaho State, 59.06.

4x100 Meter Relay

1, Boise State A, 42.03. 2, Idaho State C, 46.62.

4x400 Meter Relay

1, Boise State A, 3:15.52. 2, Idaho State A, 3:22.51. 3, Boise State B, 3:26.68. 4, Idaho State B, 3:26.92.

High Jump

1, Jacob Keller, Idaho State, 2.05m. 2, Levi Keller, Idaho State, 2.05m. 3, Ben Laymen, Idaho State, 1.95m. 4, David Walden, Boise State, 1.95m.

Pole Vault

1, Levi Keller, Idaho State, 4.9m. 2, Lucas Pope, Idaho State, 4.6m. 3, Logan Meyer, Boise State, 4.45m. 4, Keagan Burnett, Idaho State, 4.45m. 5, Sam Pierson, Idaho State, 4.3m.

Long Jump

1, Ben Laymen, Idaho State, 7.1m. 2, Tyson Berg, Boise State, 6.75m. 3, Eric Demers, Boise State, 6.55m. 4, Jacob Keller, Idaho State, 6.55m. 5, Helgo Nurmsalu, Boise State, 6.43m.

Triple Jump

1, Lawrence Wendell, Boise State, 15.12m. 2, Tyson Berg, Boise State, 13.73m. 3, Jacob Keller, Idaho State, 13.72m. 4, Levi Keller, Idaho State, 13.38m. 5, Ben Laymen, Idaho State, 12.14m.

Shot Put

1, John Danielson, Idaho State, 18.79m. 2, Erik Whittsitt, Boise State, 18.22m. 3, Kurt Schiess, Idaho State, 16.31m. 4, Simon Wardhaugh, Boise State, 15.31m. 5, Jed Slon, Idaho State, 15.21m.

Discus

1, Jed Slon, Idaho State, 48.5m. 2, John

Danielson, Idaho State, 48.33m. 3, Kurt Schiess, Idaho State, 44.14m. 4, Simon Wardhaugh, Boise State, 43.72m. 5, Brad Silvester, Idaho State, 42.12m.

Hammer Throw
1, Jarrod Stevens, Boise State, 66.66m. 2, Simon Wardhaugh, Boise State, 65.74m. 3, John Danielson, Idaho State, 58.4m. 4, Jed Slon, Idaho State, 45.48.

Javelin Throw
1, Scott Viafore, Boise State, 70.88m. 2, Pontus Thomee, Boise State, 66.14m. 3, Nate Putnam, Boise State, 64.85m. 4, Jacob Keller, Idaho State, 53.86m. 5, Nathan Capps, Idaho State, 51.79m.

Team Results

Women
1, Idaho State, 90 points. 2, Boise State, 64 points.

Men

1, Boise State, 87. 2, Idaho State, 67.

Did you GET ANY?

(HUMAN PAPILOMAVIRUS)
Genital human papillomavirus (HPV) is passed on during sex. Most times, HPV has no symptoms and goes away on its own. But sometimes, certain types of HPV can cause genital warts. Other HPV types can cause cervical cancer in women.

You can prevent HPV-related diseases:

- Females should talk to their doctors about getting the HPV vaccine (available for 9 to 26 year old females) and regular Pap tests.
- Men and women may lower their chances of getting HPV or developing HPV-related diseases by using condoms all the time and the right way.
- Men and women may also lower their chances of getting HPV by limiting the number of sex partners, but abstinence is the only sure way to prevent HPV.

The Health & Wellness Center is your one-stop shop for Sexually Transmitted Infection screenings and HPV vaccine. Call 426-1459 today.

HEALTH • WELLNESS • COUNSELING SERVICES

For more information about HPV and the vaccine, visit: www.boisestate.edu/healthservices/info/sexual

Solid. Define Yourself.

student bonus cash EXCLUSIVE OFFER

\$500

Additional savings just for college and trade school students, recent grads and grad students

2007 Ford F-150

college student purchase program

Ford LINCOLN MERCURY

Discus
1, Amber Tavares, Boise State, 43.92m. 2, Jessica Hillam, Idaho State, 42.8m. 3, Carrie Talbot, Idaho State, 41.13m. 4, Calli Foster, Idaho State, 39.73m.

Hammer Throw
1, Annika Hjelm, Boise State, 62.82m. 2, Eleni Ypsilanti, Boise State, 58.07m. 3, Carl Gunstream, 49m. 4, Jessica Hillam, Idaho

CLASSIFIEDS

April 9, 2007

Place classified ads at arbiteronline.com

RENT IT	SELL IT	WORK IT	WORK IT
HOMES	HOME/FURNITURE	PART-TIME	OTHER
<p>HOUSE FOR RENT 4+2, 1258 sq. ft. close to BSU, \$1200/ mo + \$1200/dep + 1 year lease avail. 5/1 contact Barbara @ (818)321-9611</p> <p>Smart Move to Home Ownership! Prequalify today at IdahoMortgage.com brought to you by Idaho Housing and Finance Association 1-866-432-4066</p> <p>Renting Just Got Easier Hundreds of rentals in the surrounding areas! Visit our website at: www.fpmrentals.com Or call: 321-1900 PROPERTY MANAGEMENT 321-1900 www.fpmrentals.com</p> <p>SELL IT</p> <p>HOME/FURNITURE</p> <p>LEATHER SOFA PLUS LOVESEAT. Brand new in crate with lifetime warranty. List \$2000. Sacrifice \$699.† 888-1464.</p> <p>BRAND NEW MICROFIBER COUCH & loveseat. Stain Resistant.† Lifetime warranty.† Still in boxes.† Retail \$1395. Must sell \$499.† 888-1464.</p> <p>KING SIZE PILLOWTOP MATTRESS set brand new in bag, list \$750. Must sell, \$199. Can Deliver. 921-6643.</p> <p>7-PIECE CHERRY Bedroom set. Brand-new in box. Retail \$2250, sacrifice \$450. Call 888-1464</p>	<p>CHERRY SLEIGH BED solid wood. New-in-box. Value \$799, sacrifice \$195. Call 888-1464.</p> <p>FULL SIZE ORTHOPEDIC MATTRESS Brand new in package, warranty Sacrifice \$99. Call 921-6643.</p> <p>BED-QUEEN PILLOW TOP mattress set. Brand new, still in plastic, warranty. Retail \$599. Must sell \$119. Can deliver. 921-6643.</p> <p>QUEEN TEMPURPedic style visco memory foam mattress set. Brand new in plastic. Retail \$1599. Must sell \$399. 855-9688</p> <p>ELECTRONICS</p> <p>DISCOUNT COMPUTER STORE RJM Computers in Boise Idaho's largest independent PC Store, huge local stock of hard-to-find parts and supplies, expert computer repairs, Internet service. 4524 Overland Road in Boise. (208) 472-2800. FREE Wireless Router with any new Clearwire Wireless Internet account. FREE technical support, call 472-2800 Option 2 to speak to a PC Technician.</p> <p>MISC.</p> <p>RUGER P345 \$400.45 Auto, Very good condition, 1 magazine, magazine loader, trigger lock and Manual included. (208) 599-2510</p> <p>POODLE PUPPIES (ALL SIZES) Schlerpuppies.com (509) 674-1947</p>	<p>PART TIME ON CAMPUS JOB Are you organized and detail oriented? We are looking for a coordinator who can work in a fun but deadline driven environment. Willing to work around class schedule. Inquire at jobs@arbiteronline.com.</p> <p>MARKETING DIRECTOR Responsible for all marketing activities used to promote special issues, sections and events for The Arbiter Newspaper. This is not an assistant position; you will be the Marketing Director. Activities include creating in-house ads for all events, posters, banners and other promotional items. Also includes coordinating and planning special events. Must be creative and self-motivated. This is a great resume builder as it is hands-on learning with many responsibilities. Apply at jobs@arbiteronline.com</p> <p>FINANCIAL SERVICES COMPANY Seeking self-starting individuals with desire to succeed. \$1500/wk income potential with 2-3 day work week! Call Greg @ 801-884-6140.</p> <p>\$800/WEEK GUARANTEED stuffing envelopes. Send a self addressed stamped envelope to Scarab Marketing 28 East Jackson 10th floor, suite 938 Chicago, IL 60604.</p> <p>BEST PART TIME JOB IN TOWN</p> <p>The Modern Hotel, Boise's first boutique design hotel, is hiring front desk personnel. Be one of the first to work in Boise's up-and-coming Linen District. Applicants must be willing to work weekends and nights, and must be computer literate. Email your resume to Michel@themodernhotel.com.</p>	<p>MENTAL HEALTH PROFESSIONAL Fast growing Mental Health Agency is looking for PSR/Case Managers. Must possess Social Work degree or degree in similar field. 17/hr up DOE. (208) 342-1222 (208) 342-1222</p> <p>career center On- and off-campus jobs and internships for current and graduating students Check out bronco.boise.edu http://career.hobsonista.edu</p> <p>BUSY SCHEDULE? We offer great hours to work around school or another job. Evenings and Weekends 20-40 hrs/wk Casual work environment. Paid training and benefits. \$9/hr to start 658-4888</p> <p>NOW HIRING Marketing Director Ad Coordinator Sales Associate Graphic Designer Managing Editor Production Manager Apply at jobs@arbiteronline.com</p> <p>MODELS</p> <p>NEW SPRING PROJECTS! Actors, Extras, Models, Promotions and Conventions. Earn \$75-\$800 daily. No experience or school needed. 208-433-9511</p>

Crossword

ACROSS

- Gershwin opera hero
- Coll. entrance exam
- Hey, over here!
- Vowel quintet
- Summoned, old-style.
- Architect Pei's first name
- Fairy-tale beast
- Alexander the Great's tutor
- Cotillion gal
- Banderas and Salleri
- Brings to mind
- Low-lying wetland
- Compass dir.
- Ms. Thurman
- Non-member
- Maple drip
- Legs junction
- Medicinal quantities
- Grow weary
- Divvy up
- Sicilian volcano
- Street talk
- Irrigate
- NL Braves
- "The ___ of the Sierra Madre"
- Word with whiz
- Goddess of folly
- Mare's morsel
- Halfway point
- Capital of North Dakota
- Stitch
- Wormwoods
- Triangular sign
- 68 Stadium level
- Biddies
- Bonehead play
- Facilitate
- Movie terrier
- List of candidates

DOWN

- Gentle caress
- "___ the land of the free..."
- Roberto's river
- Meir of Israel
- Holiday burner
- Wharton deg.
- Poet Teasdale
- Having no end
- Sampled
- Nucleus element
- Become permanent
- Wise lawgiver
- "We hold ___ truths..."
- Added shading
- Smudges
- Oxidizes
- Communication option
- "It's a Wonderful Life" director
- Timing devices
- "___ Marner"
- Fish eggs
- Enact
- Key PC key
- Oregon's capital
- Way in, in brief
- Copley and Garr
- Sound of pain

© 2007 Tribune Media Services, Inc. All rights reserved.

4/8/07

Solutions

E	L	V	T	S	V	L	S	V	E	S	V	E
H	O	H	E	S	N	E	H	H	E	I	L	
D	T	E	I	A	S	E	H	L	N	I	S	B
				M	E	S	K	O	H	V	A	S
W	H	E	L	D	I	W	L	V	O	E	L	V
E	T	H	E	H	U	S	H	E	H	L		
L	V	H	E	L	V	A	M	G	N	V	T	S
S	E	S	O	D	N	I	O	H	G	D	V	S
				H	E	D	I	S	T	N	O	V
E	N	N	N	E	J	S	T	L	V	O	H	
S	O	I	N	O	L	N	V	B	E	D		
E	T	L	O	L	S	I	V	L	T	O	H	L
H	O	E	I	E	D	V	B	N	O	I	E	V
L	S	S	P	A	T	M	A	L	H	O	P	

- | | |
|------------------------|--------------------------|
| 47 Night flights | 59 Soggy ground |
| 50 Chanteuse Kitt | 60 Daily Planet reporter |
| 52 Die down | 63 9-digit ID org. |
| 53 Shinbone | 65 Important period |
| 54 Middle of a tassel? | 66 Destiny |
| 57 Pirouette | 67 Rapping Doctor |

Sudoku By Michael Mepham

		1			6			9
					7		4	1
8	4				5	2		
8								2
	4		8		3		9	
	9							3
		8	3				7	1
1	5		8					
4			2			3		

Level: 1 2 3 4

Complete the grid so each row, column and 3-by-3 box (in bold borders) contains every digit 1 to 9. For strategies on how to solve Sudoku, visit www.sudoku.org.uk.

Solution to Tuesday's puzzle

1	3	5	7	6	8	4	2	9
9	6	8	4	2	5	3	1	7
4	7	2	9	1	3	8	6	5
2	4	7	1	8	9	5	3	6
8	5	3	6	4	7	2	9	1
6	1	9	5	3	2	7	8	4
5	8	6	2	9	4	1	7	3
3	9	4	8	7	1	6	5	2
7	2	1	3	5	6	9	4	8

Sudoku on your cell phone. Enter 783658.com in your mobile Web browser. Get a free game!
© 2006 Michael Mepham. Distributed by Tribune Media Services. All rights reserved.

10/18/06

arbiter COMICS

<p>CATBERT: EVIL DIRECTOR OF HUMAN RESOURCES</p> <p>I HIRED TWO PEOPLE TO WORK ON YOUR PROJECT.</p>	<p>ONE IS A MUMBLER AND THE OTHER ONE IS HARD OF HEARING BUT DOESN'T KNOW IT.</p> <p>MMMM. AFTERGLOW.</p>
<p>YOUR SUCCESS DIMINISHES ME.</p>	<p>E-MAIL ME WITH YOUR COMMENTS ON THE DESIGN.</p> <p>CAN'T I JUST TELL YOU MY COMMENTS NOW?</p>
<p>I NEED IT IN WRITING BECAUSE YOU'RE A HUGE LIAR AND YOU'LL CHANGE YOUR STORY LATER.</p>	<p>AND I MIGHT PUNCH YOU FOR NOT SHAVING THE BACK OF YOUR NECK.</p> <p>WELL THEN, E-MAIL IT IS.</p>

HOROSCOPES BY LINDA C. BLACK

Tribune Media Services

Today's Birthday (04-09-07)
You can be very successful this year, if you set your mind to it. You'll be moderately successful even if you don't. The choice is yours.
To get the advantage, check the day's rating: 10 is the easiest day, 0 the most challenging.

Aries (March 21-April 19)
Today is a 9. Speak with conviction as well as with facts to the person who holds the purse strings. Get what you need so you can produce the required results.

Taurus (April 20-May 20)
Today is a 7. Reviewing your holdings helps you stay involved in current financial events. You make the most money today, however, it's from an old tried and true method.

Gemini (May 21-June 21)
Today is a 7. The best source of income for you now will be coming in later. A long-term investment associated with an older person, possibly a relative, will pay well.

Cancer (June 22-July 22)
Today is an 8. Consult a person who has more experience than you have. You can do better than every before, especially with good coaching.

Leo (July 23-Aug. 22)
Today is an 8. OK, get back to work. No more fooling around. People expect great things from you, and you will not disappoint them.

Virgo (Aug. 23-Sept. 22)
Today is a 6. Get your adversary to talking and you won't have to say much of anything. Sit back and be entertained. And, of course, informed.

Libra (Sept. 23-Oct. 22)
Today is a 7. Focus on the job at home, and get the help you need. This isn't making you any cash, but it sure is saving a lot!

Scorpio (Oct. 23-Nov. 21)
Today is an 8. You're hungry for the goodies that you know you can acquire. Put in the extra effort and gather up the extra rewards.

Sagittarius (Nov. 22-Dec. 21)
Today is an 8. When you're doing what you love, they say the money will follow. That looks like what's happening now. Congratulations.

Capricorn (Dec. 22-Jan. 19)
Today is a 5. You're looking at the world with a new level of confidence. You've been even more successful lately than you realize.

Aquarius (Jan. 20-Feb. 18)
Today is a 7. Lost household items will have a tendency to show up, soon. It's not cheating to call on St. Anthony to help, regardless of your beliefs. Give it a try.

Pisces (Feb. 19-March 20)
Today is an 8. You don't have to know everything, or do everything, either. All you have to do is know people who can do what you can't, or won't. But you do have to do something well.

(c) 2007, Tribune Media Services, Inc.
Distributed by McClatchy-Tribune Information Services.