

8-17-2006

Arbiter, August 17

Students of Boise State University

Although this file was scanned from the highest-quality microfilm held by Boise State University, it reveals the limitations of the source microfilm. It is possible to perform a text search of much of this material; however, there are sections where the source microfilm was too faint or unreadable to allow for text scanning. For assistance with this collection of student newspapers, please contact Special Collections and Archives at archives@boisestate.edu.

Vol. 19 #1

8/17/2006

FRANKING A LITTLE LOST IN THE CROWD



The Arbitrator
is you

A bunch of What the's?

Yes folks, we did it. A full page of What the's. We here at The Arbiter feel that education may be the best way to avoid repeating unfortunate, foolish and humiliating events.

While the awkward experiences of others may be entertaining, we recommend that our readers avoid repeating any of the actions listed below. ENJOY!

Look, I was on my break

A police officer in Hugo, Texas, was fired after a citizen photographed him having sexual relations with a woman in the front seat of his cruiser in broad daylight.

Hey mon, I da' know what i'm sayin' now

Doctors diagnosed a case of foreign accent syndrome after a woman in Newcastle, England, suffered a stroke and began speaking like she was from Jamaica.

Drinking? What makes you say that officer?

A driver in Des Moines, Iowa, crashed into six parked cars and some mailboxes before slamming into an oncoming car. Leaving his front bumper and license plate on the street, he drove off, ran a stop sign and rear-ended another car.

After stopping to check the damage, he drove home-hitting two more mailboxes, running over his dog in the driveway and crashing into his house. He was laughing when the police came to arrest him for drunk driving. He told them that he had not been drinking.

I know, a real bargain; now just ring it up.

A man was charged with shoplifting at a Wal-Mart in Boonton, N.J., after he put a \$70 price tag on a \$1,395 television set and presented it at the checkout counter.

Oh, don't be such a twit

Six American soldiers on their way home from Iraq were strolling around Ennis, Ireland, after their plane developed mechanical problems. An Irish anti war activist confronted them and placed them under "citizen's arrest" for violating Ireland's neutrality act by appearing in public in uniform.

The activist then called the cops, but was angered when the officer on duty not only refused to take the soldiers into custody, but "made light of the matter."

Uh, book? What book?

A murder suspect being questioned in a Minnesota police interrogation room told detectives he couldn't have committed the crime because he is legally blind.

After the officers left the room, the man took out a paperback book and began reading.

He was surprised to learn that all suspects in interrogation rooms are videotaped at all times.

I'm home ... what th...?

The husband of a sheriff's dispatcher arrived unexpectedly at their Lakehills, Tex., home to find his wife engaged in group sex with other members of the law enforcement community including several Bandera County Sheriff's deputies and a Texas ranger in various stages of undress.

An angry confrontation ensued, after which the wronged husband produced a camera, photographed the scene, and fled with lawmen in hot pursuit.

An investigation has been launched.

I.D.? Why would do you need to see my I.D.?

Three burglars broke into a home in Sylvester, Ga., and stole the checkbook belonging to the homeowner, who is an employee of a local bank.

Then, in a stroke of very bad luck, they went to that bank to cash one of the checks.

Just trying to rekindle what we once had, honey

In order to get back at his ex-wife who cheated on him and took their house in the divorce, an Illinois man hired a drug addict to kidnap the couple, pretend to beat him up and "force" the ex-husband to have sex with the woman, police say. "I guess he missed her," the addict testified at the man's trial.

Nobody is more ineffective than me

A man, found guilty of capital murder in Montgomery, Ala., appealed his conviction on the grounds of ineffective counsel. He had acted as his own attorney.

Yes, officer, that envelope does look familiar

A man robbing a bank in Riverhead, N.Y., passed the teller a note demanding money on the back of a bulk-mail envelope that featured his name and address.

And remember, knees together young ladies

Alarmed at the incidences of drunken behavior by young ladies, police in London have issued guidelines for responsible drinking.

They advise the lasses-some of whom pass out on the nightclub floor, causing their skirts to ride up to wear modest and substantial panties, and be sure they "have a wax."

I'm back and I've brought some handcuffs home

A few weeks after a sheriff's deputy came to her home to investigate a noise complaint, a woman in Aloha, Ore., dialed the 911 emergency number to ask that he return because he "the cutest cop I've ever seen." The officer did return and arrested her for misusing the police emergency system.

Did I say Manson, officer? I meant Mason.

Police in Illinois took a man into protective custody because he was heavily intoxicated, but he didn't want the cops to know that he had a warrant out for his arrest, so he gave them a phony name. Unfortunately, the name he gave was of a man who was also wanted by police.

And I say it is a triple ... (WHAP!) ... WORD ... (WHAP!) ... SCORE

An argument broke out during a game of scrabble in Rotorua, New Zealand, during which one player repeatedly bashed the other with a baseball bat.

The rest of it, he wasted

An Aspen, Colo., man was convicted of stealing almost \$500,000 from a friend. He spent \$90,000 of it at a strip club in Denver.

Don't act suspicious, dude, they'll never know

Two young men in a car, smoking a gigantic marijuana cigarette, pulled up to a Kentucky Fried Chicken in Chicago to order some take-out chow.

Alas, two plainclothes detectives from the Narcotics Squad were inside when the driver rolled down his window, sending a cloud of smoke into the establishment.

The two narcs recognized the odor and sprang into action.

I'll have a whiskey, ouch, and two beers

A ban on smoking in pubs in Scotland has had an unanticipated effect.

Large black flies, which hate cigarette smoke, are now invading the barrooms in swarms and biting all the drinkers.

Could they steal it again and check the brakes?

Police in Rangiora, New Zealand, recovered a 20-year-old car a week after it was stolen.

The owner reports that the thieves had replaced the battery, tires and steering column, and that vehicle runs much better than it did before it was stolen.

Unlike before, it starts right up in cold weather.

First of all, I never made any sort of promises

A Web site was created for women who have had bad dating experiences to say negative things about the men who did them wrong.

But after two ladies claimed on the site that he cheated on them, a Pittsburgh attorney has sued the site, claiming he has been defamed.

WHAM! Silly!? Who you calling silly!? WHAM!

The government of New South Wales, Australia, has proposed allowing people to vote in local saloons.

Opposing politicians have labeled the plan "silly."

COUGH COUGH, I got the stuff, COUGH COUGH

Thieves in Los Angeles have taken to burglarizing homes shrouded in canvas tents while they are being fumigated with deadly chemicals.

And after that, it really got bizarre on the road

A car hit a horse on the Interstate in L'Anse, Mich., and, after police arrived to investigate, a second car hit the horse as well.

Then, an ambulance that came to transport one of the injured drivers hit a moose on the way to the hospital.

Get Your Faith On

BY JESSICA CHRISTENSEN
News Writer

For most students, college is filled with feelings of joy, stress, excitement, anxiety and tension. Learning to balance a healthy lifestyle doesn't only begin and end with physical or mental exercise, but spiritual as well.

With over 160 student clubs and organizations, Boise State offers 20 different religious student clubs.

Each religious student club remains unique and separate from the others, but ultimately retains one commonality: the goal of maintaining a purposeful establishment for all students at BSU.

In a predominately Christian culture, most clubs at BSU are Christian driven, but others are available as well.

The Muslim Student Association maintains four main purposes for their organization: generate a better understanding of the Islamic religion, make information available, encourage participation of MSA members in this and guide Muslims to practice the laws and

teachings of Islam. MSA strives to create an understanding of the Islamic religion by providing public information and conducting presentations about Islam to the followers of other faiths.

BSUCRU is a part of Campus Crusade for Christ, an international and interdenominational Christian movement active on 400 college campuses and 172 countries.

This group of students comes together to: develop a personal relationship with Jesus, receive training for the ministry of evangelism and discipleship, provide opportunity for Christian fellowship, and meet other Christians to have fun and hang out with at BSU.

Not affiliated with a specific church or denomination, believers are encouraged to participate in churches where Jesus and the Bible is honored. BSUCRU holds weekly meetings and organizes other activities such as training groups, retreats and offers summer opportunities.

Another large student religious group, the Latter-Day Saint Student Association, regards itself as the largest and most ex-

citing organization on campus.

With over 1,000 members, LDSSA participates and sponsors on and off campus activities involving service projects, social events, student government, etc.

Its purposes as a club are to provide students with an opportunity to stay closely affiliated with religious instruction while pursuing a college degree; help students succeed in their studies and achieve a balanced collegiate experience while attending BSU; motivate and encourage students to be a powerful influence for good on campus and provide students with fun, meaningful and exciting activities while maintaining high religious standards.

LDSSA was a recipient of the University's Outstanding Service by an Organization award for the 2004-2005 academic year.

The LDSSA, sponsored by the Church of Jesus Christ of Latter-Day Saints, and administered by the Boise Institute of Religion helps students associate socially, culturally and spiritually with others who have similar ideals.

Daytime and evening classes are taught twice weekly and all are invited to participate in and attend LDSSA activities. Another group unique and dynamic to BSU is the Cornerstone Ministry.

Located on the west end of campus near Capitol Blvd., the Cornerstone Bookstore maintained by Steve Barry offers an exciting and challenging environment created to build of the body of Christ.

The purpose of this club is to provide ministry resources to other Christian clubs on the Boise State campus; promote a greater interaction and awareness of each other between the already established Christian groups; and administer lectures, discussions, small student groups, discipleship groups and fellowships for students at BSU.

All religious campus groups encourage involvement from students and welcome participation and inquiries about the club.

Information about other religious clubs on campus can be found at www.union.boisestate.edu.

(No kidding)

**This word
is way
overpriced.**



FEAR RADICAL... 19

her painful evidence that the interests of
on when they are opposed to those of
uary 26), it is doubtful whether anything
at Shantung, but that may be excused on
7. The more serious matter is the Ameri
onal control of China by means of the
l difficulties, partly owing to the anarchy
d by Japan, partly owing to the withhold
e British Inspector-General of Customs
says:

his country [China] could be ren-
the Government provided with a
stroke of the foreigner's pen, while
be bankruptcy pure and simple.
political chaos, the Customs Rev-
ast year exceeded all records by
es sanctioned by the Washington
nt revenue to liquidate the whole
bt in a very few years, leaving the
ered for the Government. The
y, but to find a Government to

n the Chinese say they would like to
As a consequence of foreign control
meet an obligation of \$4,500,000
atives of America is set forth in The
follows:

If you didn't buy your textbooks at Half.com, you paid too much. Half.com has all the textbooks you need like chemistry, astronomy and history for a lot less.

FOR A LIMITED TIME, SAVE AN ADDITIONAL \$5 ON PURCHASES OF \$50 OR MORE.* SIMPLY USE THIS CODE: SAVEBIGNOW

half.com™
by **ebay**

*\$5 off promotion open to legal U.S. residents 18 years of age or older who are first-time buyers on Half.com. \$5 off promotion good for first-time purchase of \$50 or more, excluding shipping and handling, on Half.com only. Limit one offer per user ID, and offer may not be combined with any other offer, coupon or promotion. Void where prohibited, taxed or restricted. Offer expires September 29, 2006 at 11:59:59pm PT.

Find what you're looking for at the SUB

Courtesy Boise State Student Union

Boise State is a campus filled with opportunity and extracurricular fun.

To find out your many options head straight for the Student Union Building and the Student Activities Office. Located on the first floor, Student Activities supports many of the programs and organizations that make student life possible. From Greek life to student government, it's easy to think outside the classroom.

Following are just a few examples:

If you like planning and producing events that include comedy, film, lectures and concerts, join the Student Programs Board (SPB) to help promote campus community and pride through education and entertainment. Attend their annual "Up All Night" at the SUB, August 25, 10:00 pm to 2:00 am, to meet new people, enjoy great food and great music. Lots of activities are planned, and it's free! For details, call 426-1551.

Give something back by scheduling time for Service Saturdays with the Volunteer Services Board (VSB). Work with the Idaho Food Bank, the Idaho Humane Society or the American Red Cross. Lend a hand to the homeless, or assist in the Boise River clean-up. By helping others, you help yourself. Call 426-4240.

The number of Student Organizations increases each year and is currently at an all-time high of 207.

Develop leadership skills, and identify and hone professional and interpersonal strengths by joining a club or starting a new one. Call 426-5951.

At the Cultural Center you'll find the whole wide world in one place. The Center works closely with ethnic student organizations to bring authentic cultural festivals and celebrations to campus. Call 426-5950.

Students who favor the political arena are encouraged to check out the Associated Students of Boise State University (ASBSU).

Elected positions include president, vice president and senator. Students are appointed to the ASBSU judiciary, executive staff and other campus committees. Call 426-1440.

The Bookstore is also located in the SUB, and is the primary source for textbooks, general books, art and computer supplies, and BSU logo wear.

Buy paper, notebooks, pens and planners. It's convenient. It's all about serving you. Call 426-2665 or visit boisestatebooks.com.

The SUB sponsors many other events.

The Art Gallery, for example features exhibits year 'round that includes artwork by students, faculty, local and national artists.

For more information about Student Activities, entertainment, and other programs and services, call 426-1223 or visit sub.boisestate.edu.



PHOTO BY RICHARD SWANBECK/THE ARBITER

The Student Union provides a variety of games for student relaxation.

Does your professor make the grade?

BY RYAN RASMUSSEN
News Writer

Technology has given students an advantage when it comes to deciding who is going to influence their educational experience. There are now websites that allow students to search for their professors and find out what other students have said about them. Two of these sites are ratemyprofessor.com and pickaprof.com.

Students going onto these sites can look for a future professor or class and then find out what other students have thought about them by leaving comments and filling out rating boards.

The more popular website, pickaprof.com, has a rating system that is based on a five-star scale. Students can see how many stars a professor got overall as well as from individuals and their thoughts on a professor.

Other features of this website include the grading history of a

specific class a student will be taking by giving a list of professors from past semesters and comparing and contrasting them with each other. Contact information is also available for some professors.

"I used it for a marketing class and I read the teacher was bad, but had no other choice...but I still ended up dropping the class because the review was right" said Vanessa Smith, a senior and accounting major.

Students can also have a schedule made up for them based on the courses they fill in. A university chat service is also set up on the site so students of the same class can interact with each other and set up online study sessions to help them prepare for an exam in a particular class.

The site offers an online bookstore where students can sell books to others and possibly get more money back. For buying books, students just enter the info of the book they need and the site searches their store as well as other bookstores online like

Amazon.com to find the best buy with a time-saving search.

"It's never been wrong for me on reviews, people have always been right, and if I don't use it I usually regret it," Smith said.

Pick-A-Prof is a website that does charge for its service. There are several different types of packages that can be purchased—the cheapest is five dollars for a semester, the maximum is \$40 for five years. The website however just made a deal with ecampus.com that at the end of every semester picaprof.com will send a coupon of the amount spent to be used at ecampus.com where books, DVDs, apparel and other items can be purchased at a possible discounted price.

The website ratemyprofessor.com is similar, but is a free service. Here, students can see a professor's level of helpfulness, easiness and clarity. For those who insist on learning from "attractive" people they can see the "hotness" level of a professor as well as a list of funny ratings. However, this site does not contain as much detail or have as many features as Pick-A-Prof does.

Students can choose their own political adventure

BY BARRY FRANKLIN
News writer

Three political parties (College Democrats, College Republicans and Students for Liberty) have clubs on the Boise State University campus and are available for students to join.

According to their constitution, College Republicans have a philosophy to "Provide a forum and outlet for political activity for republican students of Boise State University." They are active across campus in bringing local government officials to BSU for speaking engagements, community service and in learning more about Idaho government.

The College Republicans are not simply an academic community, but a place for students to form a solid career path. Their home website offers members the ability to "make important

contacts with local government officials, business leaders and many others."

College Republican President Brandon Stoker said he sees this semester as a chance to "Really help out some candidates here in southern Idaho."

He, along with other College Republicans, look to get more students involved in local elections. "This is an election year. It's a great opportunity to see how government works," Stoker said.

There are other avenues for students to explore when searching for a politically-affiliated group to join.

Students for Liberty, representing the libertarians on campus, have a concise mission statement: "Students for liberty want people to be aware of their options when voting."

As treasurer, Ross Givens focuses on the in-

dividual.

"We have the political ideology where people govern themselves. If you're not informed please reconsider voting," Givens said.

Brian Amberg, currently majoring in both Political Science and Economics at BSU has been active in campus politics.

"I think it was my first semester. I was looking for a place where I could debate with people" Amberg said.

Political groups on campus "seem like worthy organizations," Amberg said.

When asked if he would actually join, Amberg said "Maybe...I don't know...I go to school to study."

Like the other two affiliations, the College Democrat's constitution offers an avocation of "certain principles of philosophical and political concern to members of the organization

and its political allies."

They are also active across campus in bringing the democratic student voice to the forefront of college life.

Bipartisanship is an illusive concept for these groups.

"As far as working together...we're [Students for Liberty] about as marginalized as any small third party group," Givens said.

Stoker admitted that the groups have competing ideologies, but they try to work together whenever possible.

"I don't think there really is such a thing as bipartisan," Amberg said.

In order to join these groups, students must be full-fee paying. The clubs are required to meet at least five times throughout the semester and each has different times and places to meet.

BoiseTextbooks.com

- * Shop by class
- * National marketplace
- * Millions of books

powered by
TEXTBOOKX.com

Enter code: **arbiter**

to receive free shipping on your retail order and enter to win \$500 in our sweepstakes

Books purchased on the TextbookX.com peer-to-peer marketplace averaged 54% off list price for the period of 07/15/2006 through 07/15/2006. To enter sweepstakes you must be 18-years of age or older. Void where prohibited. No purchase necessary. See textbookx.com/sweepstakes.php for details.

Your guide to student organizations

Boise State University has a rich assortment of student organizations representing the full gamut of interests.

From the Arabic Club to the Zurkies, something is bound to pique your interest. More than 200 organizations are waiting to service your itch for involvement.

The Arbiter invited these organizations to submit club descriptions and contact information, and those who responded are featured below.

We have also provided a comprehensive list of the remaining groups organized by category.

Organizations fall into one of several categories, including: academic/professional, which focus on academic disciplines and career networking opportunities; cultural/ethnic, which promote a sense of community and support for students and provide an outlet for cultural study and expression; Greek, which are primarily social in nature, are represented by Greek letters, and are exclusive to one gender; honor societies, which recognize students in specific academic disciplines who have demonstrated high academic and extracurricular achievement; special interests, which

provide opportunities for members to meet, educate, and share in a common interest; and university housing, which provide governance and social activities for students living in University housing.

Take a minute to meander through the list and find a few clubs that interest you.

Once you are hooked, contact the club officers for more information.

Participating in a student organization will greatly enhance your college experience by introducing you to new friends, providing opportunities for leadership, and allowing you to apply your education in fun and meaningful ways.

AMBASSADORS

We are seeking Boise State Ambassadors for 2006-2007! Are you a campus leader? If so, consider becoming a Boise State Ambassador. We are still looking for qualified students to serve as 2006-2007 Boise State Ambassadors.

Ambassadors is a select group of students who advance and represent the university at a variety of high-profile campus events. This prestigious group is comprised of the best and brightest students Boise State has to offer and serves our community by assisting with events hosted by the President, Foundation and other top administrators.

Boise State Ambassadors have proven their leadership through involvement in student organizations, personal reliability and contributions to the community. Student Ambassadors portray the image that Boise State strives to achieve and exemplifies the best that Boise State has to offer. For more information on how you can get involved check out ambassadors.boisestate.edu or call Jocelyn De Jong, Ambassador Advisor at 426-4113.

BISEXUALS, GAYS, LESBIANS, AND ALLIES FOR DIVERSITY

If you can relate to the Lesbian/Gay/Bisexual/Transgender or Accepting community, we are here for you! Bisexuals, Gays, Lesbians, and Allies for Diversity is the Gay/Straight Student Alliance on the Boise State University campus. If you are LGBT, or you know someone who is, please come and join BGLAD.

We are open to all individuals regardless of your sexual orientation or gender identification. We have regular get togethers where we make friends, help each other, watch movies, eat, and do our thing. Join us and have fun!

As one of the more active groups on campus, BGLAD offers challenging leadership positions including executive positions (President, Vice-President, etc.) opportunities to attend major events (LGBT Diversity Week, Drag Shows, etc) or to reach out and educate students and the public. We are an ally, Safe Zones, LGBT youth statistics and more!

BGLAD's role on campus and in the surrounding community is to provide a positive image of the LGBT community, provide an open, safe, and casual environment for its members and allies, be sensitive to the needs and concerns of each other and become a source of strength and comfort for one another. We also promote discourse and education in tolerance, create alliances which promote gender equality, and provide literature and information on safe sex, LGBT issues and LGBT specific financial aid. We also provide support and assistance to our fellow student organizations, university departments, and community organizations when called upon, when such support upholds our purpose and mission statements.

Join us every Thursday at 7 p.m. in the Student Union in Fong Room or check us out at www.bsuglad.org. You can also reach us at 426-3774 or email us at bsuglad@hotmail.com. Welcome to Boise State University. This is going to be a fantastic year!

CAMPUS BIBLE FELLOWSHIP

Campus Bible Fellowship at Boise State University is an interactive group that meets for the purpose of investigating the truth of God's word and the relevance of it to our lives today. We welcome people with any background: religious, non-religious, anti-religious—whatever! Our focus is not on any specific religion, but on the truth.

During the semester, we have varied programs including:

- A weekly dinner, Bible study and open discussions: Sunday nights 6:30 p.m. at "The Cornerstone" 2239 University Dr.
- "One to One Discipleship" courses
- Singing, sharing, food and FUN!
- Just plain "hanging out"
- Retreats and parties
- Guest Speakers

For more information contact us at (208) 631-0799 / rowlandcbf@juno.com.

CAMPUS CRUSADE FOR CHRIST

Boise State University offers an incredible variety of experiences, relationships, academic pursuits, and opportunities for personal growth. However, the spiritual area is a part of life that is often neglected during these years. That's unfortunate because God has some incredible things to say and teach during your college journey.

BSUCRU is an interdenominational Christian organization made up of BSU students from many different backgrounds seeking to understand whom God is, whom we are, and why we are here on Earth. We hope to be a community of students who want to encounter God and experience authentic relationships.

We want to invite you to come check things out at our free BBQ on Friday, August 25, from 6:00-8:00pm in Julia Davis Park by the tennis courts.

We offer a variety of ways to get involved.

For more details, check out our website www.bsucru.com or call Billy at 859-5817.

CAMPUS MINISTRY

Campus Ministry, an official Boise State University club, is a group of students committed to a relationship with God, and to friendships with other people. We practice accepting people as they are and being consistent and reliable friends as we serve the needs of others.

We are a diverse group, coming from varied backgrounds, and at different stages of knowledge and spiritual growth. We don't know everything. We don't do everything right. We do not always treat each other as we should. We haven't arrived—but we're on the journey. You won't have to look very far to find our failures. But you will find people who love Jesus and love one another.

The Biblical Studies Center is located two blocks south of Bronco Stadium and serves as a student center. Its many features include ping-pong, foosball, and pool tables, wiffle ball stadium, a large kitchen, library, study room, classroom, office space, and free parking. We invite you to come by, check it out and meet some of our students any time during the school week.

For more information call 342-2182 or email us at cmmail2@juno.com.

COLLEGE DEMOCRATS

The Boise State University College Democrats provide a forum and outlet for political activity for Democrat students of BSU. They advocate shared principles of philosophical and political concern held in common by the members of the organization and their political allies. The BSU College Democrats also provides an organizational base for political action and/or response to advance the interests of the organization and its political allies. Meeting dates will be announced at the start of the semester.

Interested parties are encouraged to contact faculty advisor Jim Stockton at 426-2127 or jstockto@boisestate.edu.

COLLEGE REPUBLICANS

Interested in politics? Want to network with the influential leaders of our community, state and nation? College Republicans is the club for you.

We provide an outlet for political activity at Boise State University by advocating for the conservative principles and political initiatives of our organization and its allies. Our members have unique access to internships, scholarships, and opportunities with important political campaigns, Congressional offices, the media, non-profit groups and other influential organizations.

Last year we helped coordinate a presidential visit, met with Idaho's Congressional delegation, and coordinated an exclusive legislative internship program. Think of us as the action arm of the Republican Party. We are routinely called upon to help out with important political happenings.

In addition to community politics, we are actively involved on campus fighting for intellectual diversity, freedom of speech, and defending the founding principles of our nation. Our efforts have been covered by Sean Hannity, Rush Limbaugh, Michael Reagan, Human Events and other local and national media.

If you want to get involved with an organization whose bounds extend beyond the campus community, take advantage of the sundry opportunities available with College Republicans. We are the movers and shakers of the future.

For more information, visit us online at www.bsurepublicans.com, or e-mail us at bsurepublicans@hotmail.com.

CORNERSTONE

What Is The Cornerstone? A Boise State University student club and a unique facility serving as: a bookstore, resource library, place to study with wi-fi access, and a place to hang out with friends.

Cornerstone is meant to be a place where ideas can be discussed freely, truth can be sought, and people can learn and share with each other. We sponsor a variety of regular and special events led by The Cornerstone Ministries, a non-denominational resource center, or by various campus clubs.

Come to the **CORNERSTONE** (2239 University Dr. (next to Quizno's)) to check out the facility. Sign up for our weekly email or see our website: www.cornerstoneonline.com, e-mail: stev.e@thecornerstoneonline.com, or call 345-1757.

CONSERVATIVE STUDENT COALITION

Are you frustrated by radical left-wing ideologues—"professors"—who use their position to indoctrinate students? How about the insolent, America-hating radicals who parade through campus assaulting freedom and virtue?

You're not alone! The Boise State University Conservative Student Coalition is a non-partisan student organization dedicated to promoting the free exchange of ideas in an intellectually diverse environment. We seek to provide students with a balanced educational experience by creating a forum for discussions, debates, protests, guest speakers, social activities, service projects and other such events. We promote conservatism in that we honor the heritage of our nation, namely the virtues of liberty, faith, free market and the American way. We take it as our mission to expose the inadequacies of radical liberalism which permeates academia and to articulate an alternative viewpoint.

The students of the CSC are working to combat intellectual intolerance, bigotry, ideological indoctrination, discrimination, hater mongering and other forms of abuse promulgated by intolerant liberals. We strive to promote a balanced education, equitable funding, and the free exchange of ideas for all students on campus. If you want to be a part of the vast right-wing conspiracy, look us up! We hold regular meetings and social events and there are plenty of opportunities for leadership and involvement.

For more information, contact us at bsuconservatives@hotmail.com, or call Jason at 353-6918.

ENVIRONMENTAL STUDIES ASSOCIATION

The Environmental Studies Association is a student club established in 2004 by students of the new Environmental Studies program at Boise State. Our mission is to support and provide activities and opportunities for students to socialize and make a difference in their community, especially regarding environmental concerns, and to encourage continued expansion and recognition of the Environmental Studies program.

We are currently looking for new officers for the upcoming year. If you are interested in serving, please send an email to jodyhull@mail.boisestate.edu. We also have several activities lined up for this fall including a campout tentatively scheduled for September 8-10 and a cleanup of our Adopt-A-Highway section of Highway 55. Please visit our website for more information and to join the club!

Check us out at www.boisestate.edu/studentorgs/esa.

BoiseTextbooks.com

Earn Cash Quickly for School

- ✗ Sell your used books
- ✗ Campus rep program

BUCK A BOOK

IMPACT UNITED

Impact United is a student organization determined to understand and pursue intimacy with God, through the life of Jesus. We welcome all students to join us as we search for ways to know God better, as a community. We understand that God is at work in the life of every individual, and it is our hope to help you discover not only how God is at work in your life, but to help you pursue a deeper, intimate relationship with the Creator of the Universe.

Our philosophy? It is unique, though we wish it were not. Many "Christians" today seem to have the order of life a bit confused. We are trying to bring clarity where there is confusion as we also seek and find the true way of following the life of Jesus. To do this adequately, we need your help.

Here's our philosophy:

Impact Ministries International is about impacting the university campus and the world for Jesus Christ through prayer and God's Word. IMI measures success in terms of developing intimacy with God. We believe that an individual who is developing intimacy with God will make an impact for the Kingdom of God. We further believe that a team of individuals who make an impact for the Kingdom of God will have a fruitful ministry. We do not aim for "making an impact" and we do not aim for "fruitful ministries." We believe that these two situations supernaturally occur when an individual develops intimacy with God.

For more information, visit our website at www.ImpactBSU.org.

INTELLIGENT DESIGN AND EVOLUTION AWARENESS

The teaching of Intelligent Design has become a very controversial topic in previous years, just as its relative - scientific creationism, was in decades past. Even in freedom-loving Idaho, last fall the president of the University of Idaho declared that no viewpoint other than Darwinian evolution would be tolerated in the science curricula. Realizing that the origins issue is a closed subject for many on both sides of the debate, it is nonetheless hardly fair to smother all scientific discussion so forcefully.

Opponents of ID are quick to assert that doubts concerning macro-evolution are purely religious while Darwinian evolution is arrantly scientific. They are also quick to attribute dissent to ignorance, stupidity, insanity and even wickedness. I argue that the case is not closed.

Many scientists, backed by research in many fields, are expressing concerns about whether macro-evolution is as effective as it is claimed to be, and in particular, whether the Darwinian method is at all capable of producing the vast diversity of life on earth. Just as we are able to notice design in man-made objects, Intelligent Design scientists use scientifically rigorous criteria to assess the evidence for intelligent design found in nature.

The IDEA club at Boise State University was formed as a local chapter of the national IDEA center, and exists to promote and foster open scientific discussion of the origins issue in an environment where all viewpoints are welcome. For more information about Intelligent Design, go to www.idea-center.org. If you're interested in the Boise State IDEA club, contact ideabsu@gmail.com.

INSTITUTE OF ELECTRICAL AND ELECTRONIC ENGINEERS

Are you an Electrical Engineering student? Do you have any interest in Electrical Engineering, computers, robotics, controls systems, power systems, etc? Are you looking to connect with your fellow classmates and professors, along with industry members? Are you an underachiever who wants to go to the next level? Are you curious about which EE and CS courses you should take? If you answered "yes" to any of the above questions, IEEE is for you!

The BSU student branch of the Institute of Electrical and Electronic Engineers is a group of students who are looking to take their education to the next level, and with the help of the talented faculty, develop themselves into professional engineers. We have a variety of interesting technical and non-technical meetings, fun social activities and generally have a great time! Some of the advantages of joining IEEE: furthering your education, making new friends, getting help with classes, learning activities with professional speakers, networking opportunities with industry members, tours of companies and interesting sites in the area, fun competitions, volunteer opportunities and scholarship opportunities

E-mail us at IEEE@boisestate.edu, visit our website at www.coen.boisestate.edu/eeclub, ask an EE professor, or look for our fliers around campus for more information. We look forward to seeing you!

INTERNATIONAL STUDENT ASSOCIATION

The International Student Association--It is not just for international students. It is for anyone interested in meeting people from other countries and cultures. Come join us!

The International Student Association: orients international students to United States life and culture, provides opportunities for the building of friendships between United State and international students, plans student trips and sponsors extra-curricular activities, sponsors an annual International Food Song & Dance Festival for the local community, endeavors to make international students aware of their rights and responsibilities as students of Boise State University, works to overcome and prevent cross-cultural misunderstandings within the community.

ISA will elect new officers and get rolling again in September. For information, please send an email to internationalinfo@boisestate.edu.

LAMBDA ALPHA EPSILON

Lambda Alpha Epsilon is a national association affiliated with the American Criminal Justice Association. Delta Psi Chi is the local chapter of LAE and provides individuals the opportunity to participate in activities related to criminal justice, develop contacts within the criminal justice community, and to socialize and meet others with the same interests. LAE membership is open to all individuals with a desire to become involved in the criminal justice field.

Activities of this chapter include bi-monthly meetings, social activities, guest speakers from various fields within criminal justice, participation in community projects, participating in regional and national conferences and fundraising. The monthly meetings are designed to plan and keep members informed of upcoming projects and events as well as provide an opportunity to associate with other individuals with similar interests.

Our fundraising activity is unique; we operate a fireworks stand during the week immediately prior to Independence Day. The funds we raise benefit all members in many ways. The top two benefits are to offset the member's cost of attending either the regional conference or the national conference. However, the funds are also used to sponsor social gatherings as well.

LAE's community involvement currently includes the collection of reading material for school age children for the Books for Israel program. This program is in conjunction with our sister society Alpha Phi Sigma, the National Criminal Justice Honor Society. In addition to Books for Israel, we also participate in Service Saturday or other volunteer projects within the criminal justice field.

Anyone who is interested in becoming a member can contact a current officer: President Suzann Lathrop at lae_bsu@yahoo.com, Vice President Joe DeMay at jdemay904@yahoo.com, Secretary Jennifer Bachtold at JenniferBachtold@mail.boisestate.edu, or Treasurer Becky Rodgers at ak2kid2003@yahoo.com. You can also stop by the Criminal Justice Administration Department or visit the website www.cja.boisestate.edu/Pages/LAE.htm. Applications are available in the CJA Department, Library room 166.

MUSIC EDUCATORS NATIONAL CONFERENCE

Do you love music? Do you wish there was continued music education all the way through high school? Did you love being a part of a band, orchestra or choir?

Then join the music teachers of today to become better teachers of tomorrow. In today's society where music teachers are being pushed out of the school system, a more informed teacher needs to join the workplace.

MENC stands for Music Educators National Conference, and they are celebrating their 100th year of supporting music teachers. They provide job opportunities, extra resources and advocate music in the government. This club promotes continued learning by fundraising to send students to a yearly conference.

All students can spend a weekend in February going to Portland, Ore. and listening to speakers from all over the nation on how to improve their music education. They have classes for Band, Choir, Orchestra, and General music teachers who educate K-12 students. For more information on this national organization, visit menc.org.

MENC meets every second Tuesday of the month in Morrison Center C215. Our first meeting, September 12, will be a pizza party behind the Morrison Center where we can get to know you. Questions? Contact rebekahbishop@mail.boisestate.edu.

MODEL UNITED NATIONS

Who says education can't be fun? Model United Nations gives you various opportunities to learn and be involved with international politics. Last year, we sent seven students to New York to represent Boise State at the week long National MUN Conference and we hope to send even more this year!

Boise State University offers a two-credit Model United Nations course each spring, which is taught by the director of the Frank Church Institute. The course prepares delegates for success at the National MUN Conference, which runs March 18-24.

We will be staying at the Marriott Marquis, a renowned four-star hotel located in Times Square. Expenses for the trip are minimal (approx. \$850) and you are guaranteed an experience of a lifetime.

Upon our return, we plan to host our own conference for local high schools. So, if you are civically minded, interested in global affairs, or want to meet thousands of students from around the world, Model United Nations is your ticket. Send questions to TrevorJack@mail.boisestate.edu.

NETWORK OF ENLIGHTENED WOMEN

Tired of radical feminist propaganda? Join the Network of Enlightened Women! We are dedicated to fostering the education and leadership of conservative university women. By promoting conservative ideals and intellectual diversity, NEW seeks to expand the voice of traditional women at Boise State University.

Ever heard of "The Vagina Monologues," or had a professor degrade men, matrimony, and traditional lifestyles? Guess what—these are acts of a radical fringe movement. We are here to provide another perspective and to educate students about the virtues of marriage, motherhood, and a balanced working lifestyle. In the spirit of the original feminists—the suffragettes—we advocate for equality, virtue, and familial success.

With an "out with the NOW, in with the NEW" spirit, ours is a unique organization rapidly expanding throughout the country. Founded just two years ago in Virginia, we currently have more than a dozen chapters nationwide. Our efforts have been featured in the "Washington Times," "Time Magazine," and other publications. Help us reclaim the voice of women in America!

For more information, contact us at: bsunew@hotmail.com.

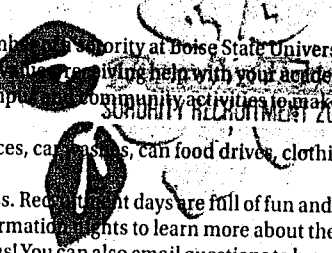
ORGANIZATION FOR GENDER EQUALITY AND EDUCATION

The Organization for Gender Equality and Education works to promote social change and human rights. We strive to achieve gender equality through community organizing, activism, and education on the Boise State University campus and the larger community. We are looking for people who share our goals and are driven to increase the access of human rights to all people.

This year we will be working on the Idaho Votes No Campaign, to help fight the anti-gay amendment on the ballot in November. We will also be increasing knowledge of the HPV vaccination in Idaho.

For more information, contact Whitney Johnson, whitneyjohnson1@mail.boisestate.edu.

PANHELLENIC ASSOCIATION

Ladies, are you looking for a unique way to connect to your college campus or just want to meet other great people? Greek Life as a membership at Boise State University might be the thing for you! The rewards of being in a sorority are numerous, including: forming lifelong friendships with other women who share your same values, scholarship and philanthropic opportunities, networking with alumni in the professional community and connecting you with campus activities.  Sorority at Boise State University might be the thing for you! The rewards of being in a sorority are numerous, including: forming lifelong friendships with other women who share your same values, scholarship and philanthropic opportunities, networking with alumni in the professional community and connecting you with campus activities. **SORORITY RECRUITMENT 2006-7**

There is no better support system than being part of a sisterhood! Throughout the year, sororities host many events such as formal dances, campus events, car washes, can food drives, clothing drives, barbecues and so much more! There are three sororities at Boise State University: Alpha Xi Delta, Alpha Chi Omega, & Delta Beta Nu.

Fall is one of the most exciting times for sororities! This is when we welcome girls into our organizations through the recruitment process. Recruitment days are full of fun and in-depth information sessions about individual sororities, which allows you to choose if Greek Life in a sorority is right for you. Please join us for one of our information sessions to learn more about the recruitment process. This year's theme is Hawaiian Paradise! Keep your eyes open for our information booth in the SUB and on banners and fliers around campus! You can also email questions to bsupanhellenic@hotmail.com, or fill out an interest card at www.clubs.boisestate.edu/greekrush.

SIGMA LAMBDA BETA

Sigma Lambda Beta Fraternity is a social fraternity that was founded in 1986 at the University of Iowa. We believe in the principles of fairness, opportunity and in the equality of all men no matter what their race, culture or ethnicity. Our biggest goal is to see that all of society can realize the importance of these three principles. In order to achieve this goal we all strive to model these behaviors and present ourselves in a gentlemanly and educated fashion.

The best and the brightest student leaders pledge Sigma Lambda Beta. Why? Because we offer what no other organization can: a true nationwide brotherhood reaching all four corners of the country. For more information, contact Estureto Alonzo at EsturetoAlonzo@mail.boisestate.edu.

SNOWBOARD/SKI CLUB

The Snowboard/Ski Club was formed to provide morally boosting activities for those interested in snowboarding and skiing. Organized sessions will be offered that focus on the improvement of basic snowboarding and skiing fundamentals, as well as extending the knowledge and appreciation of nature's environmental opportunities. Regular fundraisers will be held to help offset costs for the above activities.

We have almost 50 members, a competition team and receive many good deals on gear. For more information, contact Travis Miller at bsu_skiandsnowboardclub@yahoo.com.

ST. PAUL'S CATHOLIC COMMUNITY

St. Paul's Catholic Community, SPC², is a community of faithful Catholics seeking the help of God and wanting to help one another in our lives at Boise State University. As a community centered on Jesus Christ, we nurture spiritual growth, personal development and a sense of belonging in each of us. We also reach out to others as we help those in need, foster social justice, and speak out for Christian principles.

Meaningful liturgies, quality catechesis, lively discussion groups, small faith sharing groups, direct help to the less fortunate, education and advocacy for social justice and gathering just for fun are activities that characterize our ministry and build our community.

St. Paul's is located at 1915 University Dr. across the street from the Administration Building. For more information about our activities and our facility check out our website at www.stpaulsboise.org.

TEACHER EDUCATION ASSOCIATION

Be a part of something big. Connect with public school leaders, policy makers and fellow education majors and receive valuable publications that will keep you informed of top education issues. Join the Teacher Education Association.

One membership fee in this professional organization covers local, state and national dues for a full year. If you are currently student teaching your membership is complimentary. We are an active club that sponsors interesting speakers and community service projects geared toward building your resume.

We encourage all education majors to check us out at our Celebration of Education event on September 20 from 4:30-6 p.m. on the SUB Patio. Join us for free food and great raffle prizes.

For membership information contact Brenda at bsutea@cableone.net, pick up a form in room E326 or apply online at www.nea.org/student-program/membership.

TRIATHLON CLUB

The Triathlon Club at Boise State University consists of graduate and undergraduate students, BSU alumni and community members. The club is supported by the BSU foundation as well as the support of the community. The purpose of the BSU Triathlon Club is to promote the sports of Triathlon; Swimming, Cycling and Running at both the recreational and competitive level.

We have all levels of athletes in the club from complete novices to Ironman triathletes. The club facilitates opportunities for student leadership, time management and healthy lifestyles all within a positive social setting.

As a club we strive to send athletes to compete at designated events such as Collegiate National Championships and Ironman Couer d'Alene. We also hold clinics for skill development in each of the sub-disciplines.

VOLUNTEER SERVICES BOARD (VSB)

Who we are: The Board is a group of highly energetic and committed students chosen to represent the interests of Boise State University's student body that pertain to volunteering opportunities and social issue awareness.

Our mission: to inspire, provide, promote and expand volunteerism at Boise State University for the purpose of developing active community members via direct service and social issue education.

It's our 15th anniversary this year! Come and help us celebrate! We have expanded our programs beyond direct community service to provide and promote the deeper meaning of volunteerism. To be effective, we'd love to hear from you about your interest in volunteering.

For more information about our programs for spring 2007, please contact our Outreach Coordinator Yolanda Juarez at 426-4240 or vsboutreact@boisestate.edu.

More Student Organizations at Boise State

For more information on the various student organizations at Boise State University, visit: <http://clubs.boisestate.edu/>.

Academic/Professional

Alpha Kappa Psi (Business)
 American Advertising Federation Association
 American Chemical Society Student Affiliate
 American Production and Inventory Control Society
 American String Teachers Association
 Anthropology Club
 Archaeological Students Association
 Art Metals Club
 Associated Students of Computer Technology
 Association of Information Technology Professionals
 Association of Psychology Students
 Balloon Research Involving Students Engineers & Educators Program
 Beta Alpha Psi (Accounting)
 Bilingual Education Student Organization
 Black Holez Astronomy Club
 Business Professionals of America
 Civil Engineering Club
 Computer Science Club
 Construction Management Club
 Council for Exceptional Children
 Delta Epsilon Chi (Marketing)
 Drafting Club
 Economics Association
 English Major's Association
 Environmental Health Club
 Environmental Studies Association
 Financial Management Association
 Forensic Science Club
 German Club
 Graduate Students in Communication
 Health & Human Performance Club
 Human Resource Association
 Idaho Flute Society
 Idaho Music Teachers Association
 Institute of Electrical and Electronics Engineers
 Institute of Transportation Engineers
 International Business Organization
 International Tuba Euphonium Association
 Kappa Kappa Psi (College/University Bands)
 Lambda Alpha Epsilon (Criminal Justice)
 Machinist Club
 Master of Public Administration Student Association
 Materials Science and Engineering Club
 Mechanical Engineering Club
 Music Educators National Conference
 National Art Education Association
 Organization of Student Social Workers
 Philosophy Club
 Political Science Association

Pre-Dental Club
 Pre-Law Society
 Pre-Med Club
 Psi Chi (Psychology)
 Ranger Club
 Recreational and Small Engine Repair
 Respiratory Therapy Students
 Sculpture Club
 Skills USA
 Societas Biophilia (Biology)
 Society of Exploration Geophysicists
 Society of Hispanic Professional Engineers
 Society of Women Engineers Club
 Spanish Club
 Student Association for Radiologic Technologists
 Student Athletic Trainer's Association
 Student Consulting Group
 Student Nurses Association
 Teacher Education Association
 Theatre Majors Association
 University Symphonic Winds
 Visual Arts League

Cultural/Ethnic

Arabic Club
 Black Student Alliance
 Boise American-Filipino Relations Club & Diversity Association
 Chinese Club
 Hui-O-Aloha
 International Student Association
 Intertribal Native Council
 Japan Club
 Movimiento Estudiantil Chicana/o de Aztlan
 National Association for the Advancement of Colored People
 Organizacion de Estudiantes Latino-Americanos
 Scottish-American Society
 South Asian Student Association
 Vietnamese Student Association

Greek

Alpha Chi Omega Sorority
 Alpha Kappa Lambda Fraternity
 Alpha Xi Delta Sorority
 Delta Beta Nu Sorority
 Kappa Sigma Fraternity
 Men of Vision
 Panhellenic Association
 Sigma Alpha Epsilon Fraternity - Colony

Honor Societies

Alpha Phi Sigma Honor Society (Criminal Justice)
 Engineering Honor Society
 Eta Kappa Nu Honor Society (Electrical Engineering)
 Gamma Beta Phi Honor Society
 Golden Key National Honors Society
 Honors Student Association
 Kappa Delta Pi Honor Society for Education
 Lambda Nu National Honor Society (Radiological & Imaging Science)
 National Society of Collegiate Scholars
 Order of Omega
 Phi Alpha Honor Society (Social Work)
 Phi Alpha Theta Honor Society (History)
 Pi Kappa Delta Honor Society (Forensics/Debate)
 Pi Sigma Alpha Honor Society (Political Science)
 Selland College of Applied Technology National Technical Honor Society
 Sigma Gamma Epsilon Honor Society (Geosciences)
 Sigma Lambda Chi Honor Society (Construction)
 Sigma Tau Delta Honor Society (English)

Housing

Chaffee Hall Council
 John B. Barnes Towers Hall Government
 National Residence Hall Honorary
 Residence Hall Association

Religious

Art of Living Foundation
 Baptist Campus Ministries
 BSUCRU
 Campus Bible Fellowship
 Campus Ministry
 Chi Alpha Christian Fellowship
 Christian Student Alliance
 Christian Students
 Cornerstone Ministry
 Engage Truth
 Function
 Hearts on Fire
 Impact United
 Intersarsity Christian Fellowship
 Latter-Day Saint Student Association
 Muslim Student Association
 Real Life
 Saint Paul's Student Group
 United Methodist Student Movement
 Vedic Philosophical & Cultural Society

See Organizations [page 11]

you
 should
know

Guest opinions of no more than 500 words may be submitted for publication on any topic. Letters to the editor must not exceed 300 words and must include the writer's full name, city, state, and major (if applicable). All submissions are subject to editing.

Both guest opinions and letters to the editor may be sent via e-mail to letters@arbiteronline.com. The Arbiter cannot verify the accuracy of statements made in letters to the editor; they reflect the opinion of the writers. Opinions expressed by guest and

staff columnists reflect the diversity of opinion in the academic community, and often will be controversial, but they do not represent the institutional opinion of the Arbiter or any organization the author may be affiliated with unless it is labeled as such.

The Arbiter

1910 University Drive

Boise, ID 83725

Phone: 345-8204 (x100)

Fax: 426-3884

www.arbiteronline.com

EDITORS

EDITOR-IN-CHIEF: Drew Mayes (x105) editor@arbiteronline.com
 MANAGING EDITOR: Dustin Lapray (x1) maneditor@arbiteronline.com
 NEWS EDITOR: Chad Mendenhall (x102) news@arbiteronline.com
 ASST. NEWS EDITOR: Now Hiring jobs@arbiteronline.com
 OPINION EDITOR: Brandon Stoker (x106) letters@arbiteronline.com
 SPORTS EDITOR: Jake Garcia (x103) sports@arbiteronline.com
 ASST. SPORTS EDITOR: Now Hiring jobs@arbiteronline.com
 CULTURE EDITOR: Daniel Kedish (x104) culture@arbiteronline.com
 ASST. CULTURE EDITOR: Katrina Savitz (x104) culture@arbiteronline.com
 EDITORIAL ADVISOR: Dr. Dan Morris (x107) advisor@arbiteronline.com

PHOTOGRAPHY

Photo Editor
 John Towner (x121)
 Photographers
 Stanley Brewster
 Alice Scully
 Richae Swanbeck

OFFICE

Office Manager
 Hilary Roberts (x100)

PRODUCTION

Production Manager
 Heather English (x110)
 Asst. Production Manager
 Leona Ellsworth (x110)
 Graphic Designers
 Steve Norell (x111)
 Will Oberleitner (x111)
 Jennie Jorgenson (x111)
 Brian Evancic (x111)

Copy Editors
 Brian Holmes
 Sheree Whiteley

ARBITERONLINE.COM

Online Editor
 Harsh Mantri
contentmanager@arbiteronline.com
 Multimedia Producer
 Hadley Rush
producer@arbiteronline.com

WRITERS

Jessica Christensen,
 K. Kirk, Francy Marcotte,
 Michael McLaskey,
 Micah McLaughlin, Shannon Morgan,
 Andrea Oyarzabal, Lindsey Parker,
 Ryan Hasmusson, Joslyn Salow,
 Jason Ward, Jessica Wigley

BUSINESS

General Manager
 Brad Arandt (x101)
brandi@boisestate.edu
 Business Manager
 Marcus Hackler (x117)
businessmanager@arbiteronline.com
 Advertising Coordinator
 Shannon Morgan (x109)
businessmanager@arbiteronline.com
 Marketing Director
 Troy Sawyer (x117)
marketing@arbiteronline.com

Organizations [from page 10]

Service/Special Interest

- Ambassadors
- Amnesty International
- Anime Club
- Bisexuals, Gays, Lesbians, & Allies for Diversity
- Campus Greens
- College Democrats
- College Republicans
- Collegians Advocating the Liberation of Life
- Collision Coalition
- Comic Book Club
- Computer Network Gaming Club
- Conflict Management Service Organization
- Conservative Student Coalition
- Dead Eight Productions
- Friends of Multiple Sclerosis
- Hand Talk
- Harvey Neef Maneline Dancers
- Idaho Progressive Student Alliance
- I-FX Graphic Design Student Group
- Intelligent Design and Evolution Awareness
- Keith Stein Blue Thunder Marching Band
- Meistersingers
- Model United Nations
- Multilingual Student Advisory Board
- Nation's Voice on Mental Illness
- Network of Enlightened Women
- Orange Party
- Organization for Gender Equality in Education
- Original Orange Party
- Outsiders
- Pair-a-dice Game Club
- Publication Club
- REACH Club
- Returning Women's Discussion Group
- Scabbard and Blade
- Single Parent's Club
- Spirit Squad
- Sports Marketing Association
- Student Alumni Association
- Student-Athlete Advisory Committee
- Students for Liberty
- Swing Kids
- Team Bronco
- Travel for Success
- Trio Student Association
- Vocal Jazz Ensemble
- Zurkies

Want to create your own club?

If you can't find an organization that suits your interests, create a new one! There are many perks for having a new student club officially recognized. First, student organizations have exclusive access to the Student Union facilities. With only a few exceptions, students can reserve meeting rooms, banquet halls, ballrooms, dance floors, lecture halls, amphitheaters and classrooms free of charge. For a minimal charge, other amenities such as lecterns, white boards, digital projectors, laptops and other audio-visual equipment can be provided.

Second, recognized student organizations receive financial support from student government. In addition to free copies, U.S. mail postage, banners, paper and office supplies, student organizations are eligible for up to \$3,000 in matching funds each year. Matching funds provide two dollars for every dollar fund-raised by the student organization. In other words, if a club is eligible for \$3,000 in matching funds, they only have to raise \$1,500 to receive the additional funding, leaving members with \$4,500 to spend at their discretion. Of course, this money is contingent upon completion of community service and satisfaction of a few prerequisites. Finally, recognized student organizations are eligible for office and storage space in the Student Union Building. That's right, your very own pad in the SUB! This space is invaluable for informal meetings, last-minute get-togethers, clerical work and storage.

The official recognition process for new student organizations seems daunting, but there are people and guides to help you along the way. Here are a few tips to get you started:

1. You will need at least four people to begin a new student organization. Make sure they are ambitious—they will be your club officers.

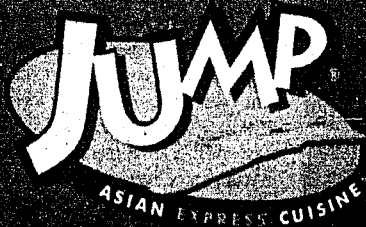
2. Pick up "The Source" guidebooks from the Student Activities desk on the first floor in the west wing of the SUB. The Information Desk can you point you in the right direction if you get lost. The books are also available online at www.asbsu.org/orgs/the_source.cfm. These guidebooks will help you every step of the way, from recognition to recruitment and event planning. They are invaluable, albeit exhaustively long.

3. Contact the Assistant Director of Student Activities Mike Esposito at 426-1223, or via e-mail at mesposit@boisestate.edu. He is the student organization guru and can answer any question relating to student organizations.

4. Draft a constitution, mission statement and any necessary by-laws to govern your student organization. Mike Esposito will gladly provide you with an easy fill-in-the-blank constitution. These documents will then need to be approved by the Judiciary of the Associated Students of Boise State University. Once approved, you're official!

5. Recruit, baby, recruit! The more members the merrier, and the greater justification you have to request additional funding from student government.

6. Bust out the puppy eyes, you need to request some money. First, you should request a start-up grant from the ASBSU Grant Fund. Contact the Student Activities Desk, Mike Esposito or an ASBSU senator to begin this process. The Grant Fund can provide up to \$750 to each new club. Second, hit up friends and relatives through fundraisers. Car washes, bake sales, direct mail solicitation, telephone calls and social fundraisers are all great options. "The Source" guidebooks have plenty of information about fundraising—don't skip over it. Good luck!



Located inside
the SUB

Located inside
the MPC Building

DAWSON'S 4.0

**UNIVERSITY
DINING
SERVICES**

easy to use meal plans...

convenient service...

so easy, you might get to class on time

stress

The bucking BroncoCard spices up BSU life

BY FRANCY MARCOTTE
Culture Writer

Stop. Do you have your student ID card on you? If not, then you're missing out on a critical BSU survival tool. The student ID (named the "BroncoCard") shouldn't just collect dust in a wallet, since it can act as a ticket to a variety of hotspots.

"There are a lot of different uses that the card has," said Tony Keife, manager of the Campus ID (which is located in the SUB across from the Games Center). "Specifically the library. That is probably the most utilized part of the card." Keife also said that most other facilities on campus, including student housing and computer labs, require the BroncoCard in order for students to access them. Other activities, such as purchasing football and basketball tickets, require the flash of a student ID. Students can also use "Bronco Bucks," a debit plan specifically for the BroncoCard to buy food on campus or supplies from the bookstore.

But don't think the BroncoCard's powers are limited to the BSU campus. It can be used

for sweet benefits all around Boise. "There are some local merchants who give discounts for the student ID," said Keife. "Edwards Cinema, and some various restaurants around town basically." Additionally, the BroncoCard comes in handy at the Brick Oven Bistro, Boise Contemporary Theater, Papa Joe's on Capitol Blvd., and Papa John's Pizza. Keife added that Bogus Basin Ski Resort gives out discounted passes with a BroncoCard.

The Boise Art Museum also embraces the student ID by offering free admission to students with a valid BroncoCard during the school year.

"It's a unique educational experience for students," said Melanie Fales, Interim Executive Director and Curator of Education for the Boise Art Museum. "It's unusual that a university would have a museum of the Boise Art Museum's caliber so nearby. It's a really good way for students to extend their education to the museum."

Fales included that students can get free access to special events and exhibitions. For instance, she said there will be a reception spe-

cifically for BSU faculty and students at the museum on October 3 from 5-8 pm. Furthermore, the BroncoCard will allow students to participate in Art Talk on Thursday evenings, again without cost. Art Talk gives students an opportunity to communicate with artists and curators.

Another convenient advantage of the BroncoCard is that most students only need to receive one during their entire stay at BSU. "Currently, the student ID cards expire every six years," Keife said. "We set it up so technically if the average student is here for five years, it gives them that five years plus a little extra time."

Pictures are taken at the Campus ID office or at orientation. The cards are produced and processed by student employees.

Many current BSU students are already enjoying the BroncoCard's perks. "I use it all the time," said Lacey Megorden, a returning sophomore. "The benefits rock." New students can enjoy these same perks by getting their IDs as soon as possible. So run to Campus ID, flash those pearly white teeth for the camera, and

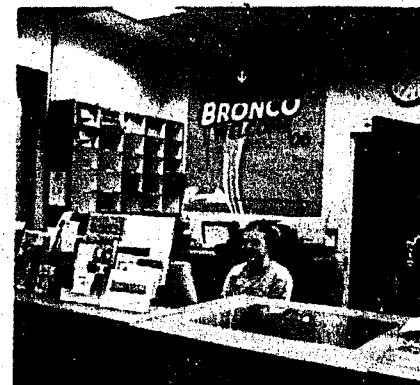


PHOTO BY ALICE SCULLY/THE ARBITER

The Information desk is a great place to get the 411.

voila! The BroncoCard is yours.

For additional information on the BroncoCard, check out: www.boisestate.edu/brconcocard, or visit the Campus ID office.

Boise State features many dining options for students

BY ANDREA OYARZABAL
Culture Writer

Eating nutritiously is sometimes a hard task while on the run in between classes, but following a balanced diet is a great way to maintain energy. Many dining options are available to students on campus and nearby.

The Student Union Building is home to many dining locations, while a few other buildings on campus house options as well. The Student Union holds the Tablerock Café, Moxie Java, Freshens, Snake River Grill, Jump Asian Express Cuisine, Tortilla Fresca, and Fresh Express. Other Moxie Java locations include the MPC and Business buildings. Vending machines on campus have recently been outfitted so that the right hand columns of all machines feature healthy snacking options.

Fresh Express, located near the food court in the SUB, is basically an on-campus convenience store. It has the usual convenience store items such as chips, soda, bulk candy, microwavable meals and energy drinks, but it also has an array of nutritious snacks at a low cost. Clif bars, Powerbars and Nature Valley granola bars (even though Nature Valley has a higher sugar content) are great portable snacks to stuff in a backpack and transport all day to classes. Fresh Express also offers garden, chef, and Caesar salads ranging from \$1-\$2.95 in price.

Get a caffeine boost at Moxie Java with a skim latte, or try a soy latte for added protein. Most sugar-free syrups and sauces are now made with Splenda, making them more healthy because they don't contain any calories and aren't made with Aspartame like other sugar substitutes. Moxie also offers grilled Paninis for \$4.99.

Rumor has it that Moxie locations will soon be called Dawson's 4.0, featuring coffee from local coffee roaster Dawson Taylor. An added bonus for BSU students is that Dawson Taylor coffee punch cards will be good at BSU locations as well as the Dawson locations off campus, according to Dawson Taylor Downtown Manager Arwen Laz.

Tablerock Café, located upstairs in the SUB, has cafeteria-style dining that is a cut above normal cafeterias. Prices are: breakfast \$5.50, lunch \$7.50, and dinner \$9.35. Tablerock offers the most bang for your buck because of their buffet style all-you-can-eat dining option. For breakfast there is a cereal bar, milk machine, omelets, waffles, toast, fruit and yogurt. For lunch and dinner there is a hot food bar, which changes daily (check the SUB dining website for menu availability), salad bar, sandwich bar, a hot grill (featuring burgers, lean turkey burgers, veggie burgers, and salmon patties) and a dessert bar with pudding, hard and soft serve ice cream and fruit.

Freshens Smoothie Company, in



PHOTOS BY ALICE SCULLY/THE ARBITER

With Table Rock Cafe and the SUB's food court, students have a variety of food choices.

the food court at the SUB features fruit smoothies. All regular-sized smoothies are just \$3.49 and Freshens offers no-sugar-added smoothies with less than 155 calories.

For a less nutritious, higher fat and calorie comfort food option, try the Snake River Grill. Snake River Grill serves up burgers and sandwiches for \$3 to \$5 and you can add fries and a drink for just \$2.

Subway, located in the Education Building, offers sandwiches low in fat and calories at the reasonable price of \$3 to \$5. Several sandwiches that Subway offers are less than 300 calo-



ries and have less than six grams of fat. Try to avoid adding extras that increase fat and calorie intake, such as mayonnaise.

Off the beaten path, Boise offers many options within walking distance for students. University Drive contains a Starbucks, Quiznos and Panda Express. On Broadway Ave., students will find Baja Fresh, Taco Del Mar and Lucy's Coffee and Espresso.

For students with their own transportation or who are willing to walk the extra mile, Boise Co-op offers member pricing to students who show ID. The Co-op deli offers amaz-

ing sandwiches loaded to the crust for a very minimal price. Thomas Hammer, an independently owned coffee shop located at 298 N. 8th St. offers BSU students two-for-one espresso drinks and bottomless cups of coffee, Monday through Friday after 5 p.m. and all day on weekends. The Thomas Hammer drive-thru locations on Broadway and Fairview Ave offer BSU students one free extra espresso shot, syrup flavor, or 10 percent off of their beverage.

Students aren't alone on campus when seeking help with nutritional information. The Health and Wellness Center at the Student Recreation Center offers a nutrition Q & A class on Tuesday afternoons from 4:15-5:15 p.m. in the Fitness Training and Wellness Room.

A nutrition counselor is available by appointment at the Health and Wellness Center for an access fee of \$5 for full-time students by calling 426-1459. For part-time students the cost of making an appointment with a nutrition counselor is more expensive. Nutritionists are helpful for students seeking skills in weight management or meal planning.

Whether you choose to dine on or off campus, BSU and Boise offer many restaurants and cafes for students to enjoy. To save money, search around for places that will offer a student discount with a valid student I.D. and before venturing off campus to eat, check local publications for coupons.

Back to ~~School~~ *STRESS*

BY KATRINA L. SAVITZ
Assistant Culture Editor

The time of the year is approaching when college students across the country prepare for their freshman year at a university.

Students begin by purchasing the most fashionable pairs of jeans, along with efficient notebooks and trendy book bags to keep all their belongings organized.

Lastly, students make themselves promises that they'll put forth their greatest effort (as opposed to last year) to follow deadlines and manage their time in accordance to their school work load, because after all this is a new year and with every new year comes new opportunities for success.

That is, until about late October.

That is when the weather begins to cool and Halloween draws near. Memories of family and friends occupy your mind when you should be concentrating on that five to eight page argumentative essay for English 102.

Due dates become jumbled as you try to keep a countdown of days until Thanksgiving break. Nevertheless, you've maintained your sanity, since you only hear your Sociology professor's voice coming through your cup of noodles on Tuesdays as opposed to every day.

Then December creeps upon you like the frigid Idaho wind and you're wearing sweaters and scarves everyday just to keep from freezing to death. Finals week is here and not even MAC concealer can cover up those lines under your eyes, plus you still can't figure out what that smell coming from your dorm room refrigerator is.

Alas, you are a survivor! But before you bust out into the Destiny's Child song, think about this - you could have gotten through this semester a lot easier by using resources right on campus.

Boise State University has a long list of resources to help you get through each semester without that twitch developing in your right eye.

Campus Recreation Center

First, the Campus Recreation Center has plenty of activities for you to work off tension and sweat out your stress. Activities

vary and include swimming programs, chair massages, club sports and yoga. Swimming programs are great for staying in shape and reducing stress. According to Lifescript.com, "Swimming works your whole body, improving cardiovascular conditioning, muscle strength, endurance, posture and flexibility all at the same time." Lifescript.com adds that stress is also lowered since you are forced to maintain a breathing pattern while swimming. Plus, having a swimmers body is always motivation to keep it up and works wonders for your self esteem.

Messages are miraculous! Who knew you could get a massage right on campus? BSU's Chair

Massage Program offers students a chance to receive a massage from a qualified massage therapist. Also, students can learn to give themselves massages. A trained massage therapist will teach you the perfect tips to rub down those daily stressors. Group exercise classes include Kickboxing, Cycling, Piyo, Step and Yoga. Yoga is the ancient therapeutic form of exercise known for its awkward stretches, but according to abc-of-Yoga.com, "(Yoga) helps you become more aware of your body's posture, alignment and patterns of movement. It makes the body more flexible and helps you relax even in the midst of a stress-stricken environment." Most "Yogis" can contend that practicing the art form improves not only their physical appearance, but also their inner wellbeing. Next on the list is the Student Union Building. Now I know what you're thinking: "How can I relieve stress at the SUB?" Easy! Take a break from your long hours of studying to partake in a game of air hockey or billiards. You'll relieve stress and

break a sweat all at the same time.

Study environment is very important. Where you study determines how hard you study and what you'll retain.

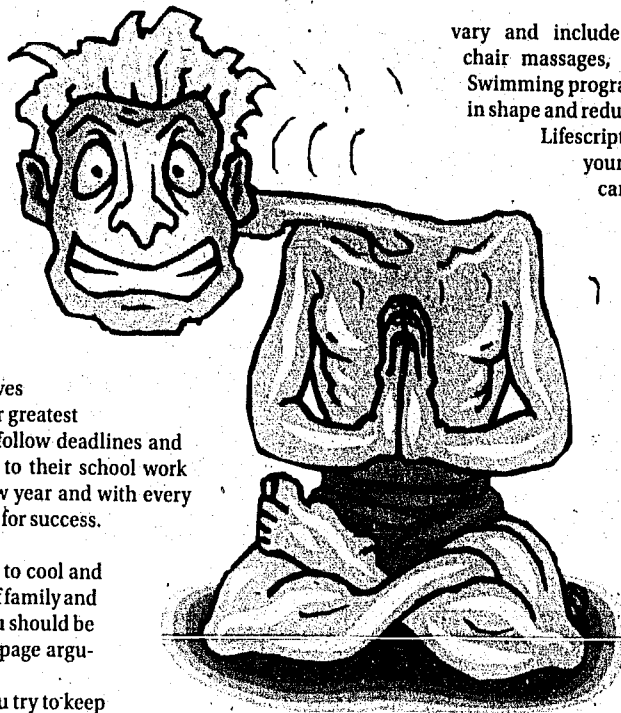
Most college students are very particular about where they study. Some like the extreme silence of the Albertson's Library, meanwhile your dorm room gives you a unique sense of comfort.

How about breaking up the monotony? BSU is lucky to be located along the Boise River. The ambience of the river and the gentle chirp from the native birds can lull you into such a relaxing state, perfect for studying or just to chill.

Lastly, the Health, Wellness and Counseling Center is always there to help. They have several tips, techniques, resources and workshops to help with all levels of stress.

The Health, Wellness and Counseling Center is hosting the Aromatherapy and Well-Being Workshop on Tuesday, September 19. The workshop is held at the Farnsworth Room in the SUB at 6:30 p.m. for only \$15. Call to register.

Feelings of stress are normal for college students, however it is important to remember that BSU offers plenty of resources for you to stay healthy and succeed.



1079 Broadway • Boise • 344-5907

LUCY'S
Coffee & Espresso

No Nonsense Coffee

Cure the Summertime Blues at Lucy's
Show your Faculty, Staff or Student ID and get
20% OFF any purchase - all summer!

Open Tues-10pm M-Sat
7am-9pm Sun

Other Expires August 31, 2008

GET OUR FALL GINGER SPECIALS: HAMBURGERS • STEAK SANDWICHES • ICE CREAMS & SMOOTHIES

BACK 2 COOL!

August 5th-27th
20%-40% OFF
selected summer shoes,
sandals, shirts, & t's

Identifying Symptoms of Stress

- | | |
|------------------------|------------------------|
| Headaches | Fear |
| Skin rashes | Alcohol or drug abuse |
| Sleep problems | Eating problems and/or |
| Abrupt spurts of anger | changes |
| Depression | Isolation |

Contact Info

Campus Recreation - 426-1131 or rec.boisestate.edu
Student Union - 426-INFO
Health, Wellness and Counseling Center -
(Medical Services) 426-1459

(Counseling Services) 426-1601
(Wellness/ Health Promotion) 426-5686
(24-Hour Nurse Line) 800-322-9569
(Suicide Prevention Line) 800-564-2120

Put a little OM in the dorm

BY HADLEY RUSH
Culture Writer

Today I realized why my life is so erratic, so disheveled. I possibly uncovered the mystery of my chronic ailments, my stagnant love life (ahem, sorry boyfriend) and my dearth of a concentration level. Tonight I studied up on, and then attempted to Feng Shui my room.

Feng Shui (pronounced fung shway) is the ancient Chinese art of placement. Mostly, though, I found Feng Shui is just dumb common sense. As explained in Skye Alexander's book "10 Minute Feng Shui," "The object of Feng Shui is to create harmony and balance in your environment. This involves applying practical solutions to everyday problems, such as establishing convenient traffic patterns through your home, positioning furniture in comfort-

able arrangements, and eliminating clutter in your living and work spaces."

Though I live in a two-story house with a roommate, I decided to apply the practices of Feng Shui solely to my bedroom. You can adjust this accordingly to your dorm or any living arrangement, really. The book I bought to aid me in my Feng Shui learning broke it down into four areas of one's life seeking improvement: prosperity, love, good luck/happiness, and health and well-being.

I decided I'd focus on overall happiness. And so my quest began. I looked around my room and instantly counted nine half-empty (or full?) dirty cups. In my corner sat a heap of desperate-looking laundry, and to my left was a suitcase which had been resting quietly near my closet for the past month and a half.

One of the first things the book told me to do

was enter each room in my home every day to go ahead and check what off if you live in a dorm. See ... Feng Shui is easy. Since I was starting in my room when I read this, I figured I'd start with step one.

Next, "turn on a light in every room." I started toward my light switch and noticed that my light had burned out. Could this be why I'd been feeling a little tired? Interesting. I made a note to change the bulb (which, mean, to make someone else do it) and call the electrician.

Next I was told to dust or vacuum lampshades in a room. Since I had a vacuum cleaner, I went way downstairs to my room and vacuumed over to my paper bag. I was surprised to find over the top of the bag was a small pile of dust as good as dusting.

Check.

The next step was to keep my closet door closed. I closed it, and it looked like it was closed. I moved the piles in my closet, and I closed the door. Check. "The ancient Chinese were efficient," I thought.

The next page told me to place a yin/yang symbol in my living space. I looked at my nose and winced at this.

Perhaps this is a lovely symbol of the harmonic mélange of male and female energies, but I also wore on my nose a pair of purple nineties. I figured I'd check it out. So, check.

I flipped through the "happiness" portion of Feng Shui. I popped a Prozac and surprisingly, I was happier. Was it the upped dosage or the healthful benefits of Feng Shui? I'll never be sure.

Get Involved On Campus:

A look at what's coming your way

August '06	Monday	Tuesday	Wednesday
20: End-of-Summer Concert. 5:30 p.m. Quad. Free.	21: Info Tables. 8 a.m.-7 p.m. Students can learn more about Boise State by visiting the information tables that will be set up around campus.	22: Campus REC Day. 11 a.m.-2 p.m. Student Union Patio and Intramural Field. Free.	23: On-Campus Student Job Fair. 9 a.m.-3 p.m. Student Union Jordan Ballroom D. Free.
	28: Faculty/Student Grill and Chill. 11 a.m.-2 p.m. Quad. Free.	29: "Get an Education, Not Just a Degree." 7-9 p.m. Student Union Special Events Center. Free.	30: "Get Smart, Start Smart!" 9 a.m.-2 p.m. Free. Students can get expert advice about study skills and more.
		31: SPB Family Tailgate Party. 5-7 p.m. Bronco Stadium Parking Lot. Free. Boise State vs. Sacramento game begins at 7 p.m.	
			17: Annual International Programs Office and Cultural Center Barbecue. 6-9 p.m. Ann Morrison Picnic Shelter. Free.
			18: "Benchwarmers" 10 p.m. Boise State Amphitheatre. Free.
			19: Moon Festival. Doors open at 5:30 p.m., event begins at 6:30 p.m. Student Union Jordan Ballroom. \$10 general, \$5 students with ID, children younger than 6 free.
			"Dating and Relationships" with MJ Garrett from MTV's "Real World: Philadelphia." 7 p.m. Boise State Amphitheatre. Free.
			24: "Energize, Refuel and Learn." 11 a.m.-1 p.m. Student Union Patio. Free.
			25: "The Buzz About College Drinking." 9-10 p.m. Student Union Special Events Center. Free.
			26: Service Saturday. 9 a.m.-1 p.m. Student Union, first floor by the Brava! Stage. Registration begins at 9 a.m. Breakfast will be provided.
			Up All Night at the SUB. 10 p.m.-2 a.m. Free. Featuring speed dating, great food, prizes and more.
Sunday			Friday
			Saturday

BOISE STATE
UNIVERSITY
career
center

On-Campus Student Job Fair



- August 23, 2006

- SUB Jordan-D

- 9:00am - 3:00pm

- Campus Departments will be hiring for on-campus job openings (including work-study positions).

- For **ALL** students!



Coffee and WiFi and Pastries, Oh My!

SHANNON MORGAN
Arbiter Staff

There are two things many students have on them at all time: a laptop computer and a thermos full of coffee. Like many of you I am a coffee fanatic. The essence of this beautiful black bean is as vital to most college students as the air we breathe.

One of the first things I learned at Boise State University was where the best place close to campus was to get an infusion of caffeine and a free wireless Internet connection for my laptop. Notice I say place that's close to campus because you can't find a decent brew on campus.

Going to the Student Union Building to acquire a cup of Joe from the Moxie Java is like stepping into the popular 90's TV show "Saved by the Bell." Gee golly folks, it's a swell place to meet the gang after English 101 for a study group and some laughs.

Not to mention the bad coffee. Yuck! I don't think Moxie Java should be able to label the warm water with brown food coloring they serve as coffee at all.

If you're crunched for time and have no other option, or don't have a laptop computer and need access to the Internet, this is where I recommend you go. The SUB has several internet terminals available for students which you can use for a period of 10 minutes. There's also

the added benefit of being able to grab a bite to eat and not have to leave campus.

Normally I would be stationed happily at the Starbucks on Broadway caddy corner from the stadium. This location is nice because of the convenient drive thru window and the delicious cinnamon crumb donuts they serve. I've always been a fan of Starbucks coffee. When you ask for a dark roast that's exactly what you get at Starbucks. For a coffee snob like me that's a big deal.

While scoping out the store on my last visit my eyes were drawn to a beautiful orange ceramic coffee mug, which I thought about purchasing before I flipped it over and read that it was \$12.95! "Holy Crap is this thing made out of Gold!?" I said out loud to myself. Moving on now...

Just then I looked out the window across the street to a little coffee house called "Lucy's Coffee" I had seen it before but never gone over because I was under the spell of the Venti Dark Roast and had never thought to stray from the herd.

Walking into Lucy's was like a breathe of fresh air. It's locally owned and operated, not to mention environmentally conscience. This vibrant and energetic coffee house offers their customers a diverse menu with fresh baked homemade



PHOTO BY ALICE SCULLY/THE ARBITER

What's your poison? Regular, Unleaded, Premium... not GAS! Coffee! Lucy's is ready to fill 'er up.

pies, muffins, and pastries. You'll have to stop in on Wednesday for the Open Mic Night between 7-10pm, where you can perform or listen to anything from music to poetry to short stories.

The best part is Lucy's has free WiFi and the coffee is delicious! I recommend you try the "Black Bull" which is mocha with chocolate covered coffee beans blended in. The menu reads, "Forget Wings, this thing gives you a rocket booster!" I can attest that statement is true.

If you're looking to get away from the warm coffee flavored water of Moxie Java, or Starbucks's \$13 ceramic mugs, I recommend you stop by Lucy's Coffee located at 1079 Broadway Ave and support a local homegrown business with your hard earned local dollars.

BOISE STATE UNIVERSITY

BRONCO WELCOME

broncowelcome.boisestate.edu

Pick up your Bronco Welcome Booklets at the Info Desk!

Thu Aug 17 Annual International Programs Office & Cultural Center BBQ (new time & location) - 6pm, Ann Morrison

Fri Aug 18 SPB Movie Benchwarmers - 10pm, BSU Amphitheater

Sat Aug 19 Home Festival - 6:30pm, Jordan Ballroom

Sat Aug 19 MJ Garrett From the Real World - 7pm, BSU Amphitheater followed by live music!

Sun Aug 20 Student Org Religious Activities - see website

Capital Educators

FEDERAL CREDIT UNION

BSU F.T. Students & Employees

FREE Checking Accounts

FREE Telephone Transfers

FREE Home Banking

FREE E-Statements

* Free Bill Payment * (if payment occurs 3 times during the month)

ATMs in SUB and 5 of our offices (except Nampa), and in the ID Water Center Bldg, Boise.

275 S. Stratford, Meridian * 7450 Thunderbolt, Boise * 503 E. Highland, Boise * 12195 McMillan Rd., Boise
738 E. Avalon, Kuna * 1110 Caldwell Blvd., Nampa

We are a full service financial institution and we offer all types of loans - O.A.C.

We are an Equal Housing Lender.

Tel. No: 208.884.0150

Web: www.CapEdFCU.org

NO per item fees,
Unlimited check writing,
NO monthly service charge,
NO minimum balance requirement,
PLUS we pay dividends on your account.

NCUA

Accounts Federally Insured to \$100,000 by NCUA, an Agency of the U.S. Government

Get into the swing of things with club and intramural sports

BY DUSTIN LAPRAY
Managing Editor

If you are attending Boise State University and you want to play sports, you do have an outlet, even if you are not a scholarship athlete.

That outlet rests in the realm of Club and Intramural sports.

"They provide an opportunity for students to get involved on campus," Assistant Director of Student Recreation Alain Rodrigue said. "Research shows that student involvement makes students better in the classroom as well."

CLUB SPORTS

There are 25 club sports at Boise State, including Baseball, Bowling, Cycling, Jiu-Jitsu, Judo, Kayak, Kenpo Karate, Lacrosse (Men), Lacrosse (Women), Long Board, Rodeo, Rugby, Shotokan Karate, Snowboard/Ski, Soccer, Softball (Women), Taekwondo, Tennis, Triathlon and Ultimate.

Quite a selection eh? If you want to join a club sport, the best route is to contact the club presidents at the info box, kick 'em an email and join up. "These presidents-when they get these phone calls and emails concerning new players, they're all over it," Rodrigue said. "Their attitude is tremendous."

You can also go to the Student Activities office in the west wing of the Student Union Building and pick up a packet if you want to start up a new club sport on campus. Three years ago there were 16 club sports on campus. There are now 25. Some of those original 16 have dissolved, so if you want to start a sport, the opportunity is there. "A lot of those clubs are run like a business," Rodrigue said. "They have fundraisers, negotiate contracts, put schedules together, and make travel arrangements for 20 other athletes, depending on how big the club is."

Most of the clubs never cut players and only a few have tryouts, and those are only intended to discern where players should sit in the lineups.

A handful of club sports, especially Men's and Women's Lacrosse, play in intercollegiate leagues. The Men's Lacrosse team hosts an annual tournament on the intramural field by the SUB. The number of teams participating make the event one of the largest in the country.

Club sports do allow community members to play, but if the teams play in conferences then the players must be students in good standing with the university. Baseball, softball, Taekwondo and Rugby already play in competitive leagues. Soccer and cycling are looking for a league to join. Students wanting to participate in club sports can play a total of four seasons over the course of five years.

"Club sports is more organized," Rodrigue said. "I used to say it was the halfway point between intramural sports and intercollegiate

Students can participate in club and intramural sports like 3-on-3 basketball and Lacrosse, Rugby and Tennis.

athletics, but it's getting closer and closer to being more like athletics, mostly because they are playing other universities. Many have coaches, some of them have tryouts. They're out there competing against other universities with Boise State logos on. They try to make it to a regional championship and if they win that they go to a national championship."

You cannot underscore the work that goes into running a club sport. Men's Lacrosse, for instance, has to raise around \$25,000 every year to go through its season.

There are costs involved in playing club sports. The ones which travel more have a higher fee to play the season, so that the team doesn't have to spend all its time fundraising. Each sport has a different fee. Talk to the club presidents to find out the costs. The clubs also work out payment plans, so you don't need to pay the whole sum up front.

"It's much like a fraternity," Rodrigue said. "You pay X amount of dollars to join the fraternity, but here you are doing an activity. You are playing a sport."

INTRAMURAL SPORTS

The intramural sports program at the REC offers 12 sports and tournaments this fall. "Do it, sign up as a free agent, create a team of strangers, find out they click and use club sports to find friends," Rodrigue said.

The sports include Tennis, Grass volleyball, Flag Football, Volleyball, Indoor Soccer, 3-on-3 Basketball and Billiards leagues. There are also individual tournament for Bowling, Dodgeball, Wallyball and of course The toilet Bowl.

The Toilet Bowl is a flag football tournament played every fall (Oct. 2) on the Blue at Bronco Stadium. The 16-team tournament will not expand, so if you really want to play, get your paperwork in on time.

Some of the teams competing in intramural sports have built a tradition.

"Teams practice recruiting to keep groups going," Rodrigue said. "Some Intramural sports have the same team name for years." But new teams also pop up every year. You can start your own team or join one that is looking for a few extra players.

For more information on Intramural sports deadlines and Managers' meetings, check out the website rec.boisestate.edu or page 29 of the REC Guide.

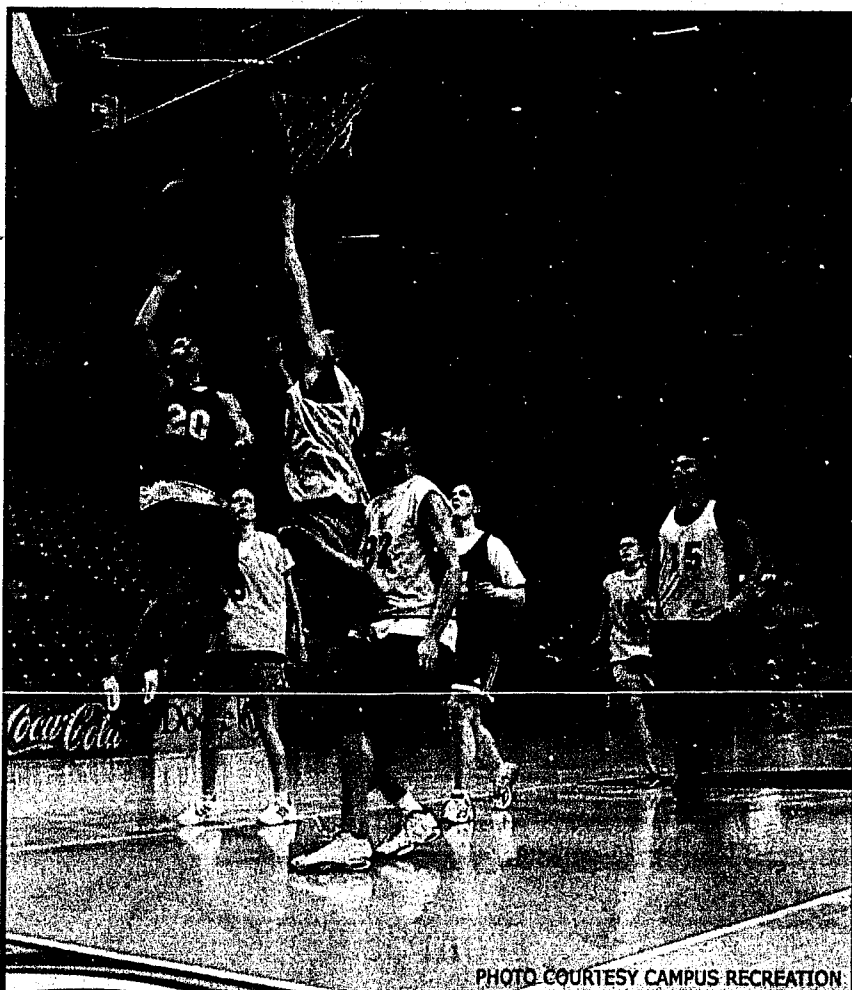
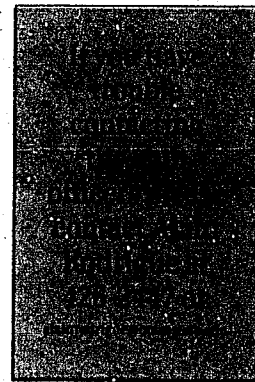


PHOTO COURTESY CAMPUS RECREATION

CLUB SPORTS

Baseball	joshjolliffe@mail.boisestate.edu
Belegarth	danejohns@mail.boisestate.edu
Bowling	dboyd@boisestate.edu
Boxing/Kickboxing	mefrcabaltera@mail.boisestate.edu
Cycling	daxmickelson@mail.boisestate.edu
Disc Golf	bentonwelker@mail.boisestate.edu
Jiu-Jitsu	pmedicpaul@msn.com
Judo	mikaelad22@msn.com
Kayak	markesanders@gmail.com
Kenpo Karate	vandal503@hotmail.com
Lacrosse (Men)	chevyguy285@hotmail.com
Lacrosse (Women)	jenniferwallace@mail.boisestate.edu
Long Board	logan175@hotmail.com
Pool and Snooker	michaelhinman@mail.boisestate.edu
Rodeo	rosannaanderson@mail.boisestate.edu
Rugby	andyvillegas@mail.boisestate.edu
Shotokan Karate	jusealthy@yahoo.com
Sixes Football	angierodgers@mail.boisestate.edu
Snowboard/Ski	TravisMiller@mail.boisestate.edu
Soccer	antoniotervel-matheu@mail.boisestate.edu
Softball (Women)	ShannonMcCormick@mail.boisestate.edu
Taekwondo	jasonjeffries@mail.boisestate.edu
Tennis	revann@gmail.com
Triathlon	antonlogonzaleziii@mail.boisestate.edu
Ultimate	markkoob@mail.boisestate.edu



The game is on, got your tickets?

BY JAKE GARCIN
Sports Editor

Whether you're seeking tickets to football, basketball or volleyball games, the Boise State Info Desk is a one-stop shop for all your sports ticket needs.

With a high demand for tickets to University events throughout the school year it's important to know where to go and when you can buy. Waiting until the last minute could leave you on the outside looking in.

The BSU Student Info Desk is in operation to help give students the vital information to all

their event questions. The info desk is located in the Student Union Building on the first floor by the Cyber Café. Students can purchase tickets directly from the info desk, but it is important to know there are other options if you can't make it during open hours.

Sporting events tickets for the Broncos can also be purchased at both the Taco Bell Arena and Bronco Stadium ticket office. The Morrison Center and the Payment and Disbursement office in the Administration Building will also be available as campus ticket venues.

The Morrison Center and the Payment and Disbursement office are available to sell tick-

ets during the same day-time business hours as the info desk. Taco Bell arena and Bronco Stadium will sell tickets all the way up until game time, making them ideal for anyone that is late on reserving a ticket. However, attempting to purchase tickets at the gate will never guarantee availability.

In addition, tickets will be sold at Bronco Stadium and Taco Bell Arena locations until halftime of the game, or until the student allotment has run out. Ticket office manager Shaela Priaux warns students of the high demand for football tickets.

"We've sold out of student section tickets for every game except for two the past two years," said Priaux. "One game was sold out last year and one game the year before that. My recommendation is to pick up the tickets earlier in the week."

Football game tickets will always go on sale a week before the upcoming game. BSU has three weekday home games this year, which will put tickets on sale Friday the week before a game.

For all Saturday games - ticket sales will begin on Monday, the week of the game. The first day of ticket sales for the football home opener

against Sacramento State will be August 25 at 10:00 a.m.

Students are entitled to one free ticket as long as they have proof of their enrollment with their Student Identification card. Student ID's will be required at time of purchase and while entering the stadium on game day.

Full-time students will be able to purchase one additional guest ticket with their student ID card. Those enrolled as part-time students will be ineligible for a free ticket, but will be able to purchase a guest ticket at the student rate. Guest tickets will be sold for \$18 dollars per game.

A student can take as many as three ID cards to a ticket office and purchase three sets of student and guest tickets for a game.

An additional piece of need to know information is that the student section at both Bronco Stadium and Taco Bell Arena are general admission, which means there will never be assigned seating for any home games.

It is recommended that students arrive to games early if they hope to get seats closer to the action.

Gates open for football games one and a half hours prior to kick off.

QUADS ON THE PARK

336-8787

Home Suite Home
With a Room of Your Own

The Privacy...

- ◆ Your Very Own:
 - ◆ Bedroom Suite
 - ◆ Accent Wall
 - ◆ In-Room Vanity
 - ◆ Mirrored Closet
 - ◆ Cable TV outlet
 - ◆ Food Pantry
 - ◆ Patio/Balcony

The Community...

- ◆ All Utilities Included
- ◆ Free Cable & Internet
- ◆ Activities/Events
- ◆ Laundry Facilities
- ◆ Furnished or Unfurnished
- ◆ All Appliances

Minimize Your Expenses

Maximize Your Benefits

From \$325

The REC gets you fit

BY DUSTIN LAPRAY
Managing Editor

If you triceps flap when you run, you break a sweat tying your shoes or if you want to move up a weight class, lose weight, get in shape, run faster, meet friends and fellow students, show off to that girl, show up that jerk who told you you were chubby, there is a place on campus to give you your wants.

The Boise State University Student recreation Center is located across University Drive from the Student Union Building and the joint has everything you could possibly need to change that flab into flex.

For full-time students it is free, as long as you bring your student ID card. You need the card to enter the building. But once inside, you are welcome to enjoy the array of exercise experiences. The REC has basketball, raquetball, volleyball and even badminton courts. It has a state-of-the-art weight room with dozens of machines and free weights.

It has more than 60 cardiovascular machines: elliptical runners, treadmills, stairs, bikes and rowing machines. One-third of the machines get swithed out every year and sold off to buy new equipment. This year, new running machines will be installed with 10-inch personal televisions, for individuals to watch Lifetime while they run. There's an indoor running track (11 laps make a mile).

The REC even has access to the swimming pool in Kinesiology Building (located next to Taco Bell Arena), where you can attend an open swim or swim competitive laps, play water polo

or Marco Polo with friends and strangers also looking for a good workout, a good time.

The Facility also offers massage therapy (\$25 per half hour) and Rec Response, a benefit to students who require medical attention. Rec Response is free and you can request that someone be on hand at group gatherings or club sporting events. If you need an ankle taped or become, ill, they will set you straight.

You can rent towels and lockers. You can get Gatorade or powerbars, basketballs and Frisbees, pain medications and toiletries.

You need never pay to attend some other gym in town. The REC has it all. Your fee comes out of the cost of student fees, yet many student have never stepped through the door. That is good for those who do step up to build stronger bodies. You can go there and do your routine without the stress of comparing yourself to the professional body builder lifting Volkswagons in the mirror.

The staff is there to assist you. "I really like (helping people get in shape)," Lloyd said. "You hear stories of the person who comes in, who really didn't feel comfortable coming in because they were out of shape, then they came in and our environment doesn't lean itself toward those people who need to be in perfect shape to come in here." That's one of the best things that you can hear, that your facility has really helped out.

Students can also work at the REC. More than 120 people work in the total complex. Some scrub floors, clean carpets, fix the toilet that stops working and others are personal trainers and massage therapists.

BOISE STATE UNIVERSITY
career center
<http://career.boisestate.edu>
426-1747

bronco jobs

Access employment listings on our password-protected, web-based system.

- Student Employment & Internship Job Listings
- Career Employment Job Listings

BOISE STATE UNIVERSITY
making connections

Special Limited Time Offer...**ENDS SOON!**

Back-To-School SPECIAL!

Steamboat® Firm No Flip
2-Piece Twin Set ONLY...

\$179

2-Pc. Full ONLY...	2-Pc. Queen ONLY...
\$229	\$249

SAVE LOW PRICES!
NO
EXTRA CHARGES
FOR FINANCING!



We also now feature an exclusive collection of
Simmons Beautyrest® Mattresses!

10 YEAR
REPLACEMENT
WARRANTY

130 Store Locations in
30 States...and GROWING!

DENVER
MATTRESS CO.®

*More mattress. Less money.**

STORE ADDRESS: 107 North Cole Road • (208) 672-8186
(Corner of Franklin & Cole ~ In The Furniture Row Shopping Center)

STORE HOURS: Mon-Fri 10-8 pm • Saturday 10-7 pm • Sunday 12-6 pm

**10% OFF
STUDENT
DISCOUNT!**

Bring in any current student
I.D. card and we'll give you
10% OFF on your next
mattress purchase!

(Does not apply to previous purchases.
Limit one mattress per student I.D.)

The REC entices students outdoors

BY DUSTIN LAPRAY
Managing Editor

If the gym becomes a drag, rise above it. The Outdoor Program at the Student Recreation Center is selling adventure. All students are welcome to buy in. The above-rising vernacular is aimed at the rock climbing wall, installed inside the REC.

"It's very difficult for people to see what we do, because we don't do things here," Assistant Director of the REC Geoff Harrison said. "The

climbing wall lets them see it and it's not just for lifetime climbers. You can use the wall for fitness. They might say, 'I want to focus on weight lifting, but I also want to work on my dexterity and balance.'"

The wall is one of the largest collegiate climbing gyms in the United States. Newcomers must pass a Basic Skills class before climbing the wall. Classes for new climbers are offered every Sunday, Tuesday and Thursday.

"(The Climbing wall) provides a controlled environment for people to learn," Outdoor

Program Coordinator Jesse Sears said. "You can change it around all you want. You can reach people in their comfort zones and teach them the basic skills so that they're not freaked out when they're out there. And the more you work, the more you can expand their comfort zones."

The Outdoor Program is open Monday-Sunday from 1-7 p.m. The Outdoor Program offices are located in the back of the REC. If you don't want to walk all the way through the building to get your outdoor on, there is an entrance on the Northeast side of the building.

Besides the indoor climbs, the OP offers myriad climbing adventures, including Fall and Winter break trips, community climbs, the Reel Rock Film Tour (rock climbing films), Women that Rock (no boys allowed select Friday nights), trips to the Black Cliffs and a road trip to the City of Rocks near Oakley.

The City of Rocks climb takes climbers way out of their natural environment into the natural environment. The program has been taking a trip to the national monument off and on for the past seven years (they don't go every year so as to keep the experience from becoming routine). The Saturday-Sunday trip must be prefaced by a pre-climb the Tuesday previous. Harrison said that the true value of the trip is unknown, students get real-life climbing experience. They get to rise a few thousand feet higher than Boise's elevation and hence get to catch fall in the Southern Sawtooths a full month earlier than they could in Boise.

As the Outdoor Program expands, reaching 5,000 participating students every year, it chases to eliminate current boundaries.

The group already floats the Boise River, The Payette River (the Cabarton Stretch (the Upper North Fork of the Payette)), but desires a longer ride. The staff wants to take a trip down the lower Salmon River, a longer trip, multiple-days.

"The Treasure Valley is close to everything you could need outdoors," Sears said. "Our goal is to get people involved, to help them have a healthy lifestyle."

The healthy advantage of outdoor recreation is more than what you could define in a doctor's evaluation. When you traverse the natural, you not only improve your physical traits, you massage your mentality, you put your soul on a treadmill, unplugged.

The Outdoor Program offers what Harrison termed "Lifetime Sports", such as canoeing, rock climbing, backpacking, hiking, camping, kayaking and more. "You can climb forever," Harrison said. "Those are the sports that allow people to realize all the wonderful things about Idaho, 68 percent of Idaho is federal land; it's wild land."

Most sports are demanding, not to bring down kayaking, but the pressures of the competition are less intense than contact sports. The program offers athletic ventures in which the only contact is with natural elements.

According to the guys, the life of the outdoors is beyond a positive. It is becoming a piece of the university. "It allows you to learn not only about yourself but about people around you and the natural environment," Sears said.

"Think about what we do here in college," Harrison said. "We are gathering knowledge, but it's also about learning about yourself and learning about what you do."

The Outdoor Program does cost a little bit of cash, but it is mental. It offers rentals of dozens of items you might need on your weekend escapades. It employs 25 student staff members. It is what it is.

For more information on the Outdoor Program, check it out at rec.boisestate.edu. The registration deadlines for activities are all on the website. Stop by and chat with the crew. Pick up a REC guide and get involved.



**Better Ingredients.
Better Pizza.**

NOW HIRING!

- Looking for Drivers & Insiders
- Flexible hours
- Good pay
- Employee priced pizzas
- Fun environment
- Call for Details 367-9200

B.S. W/ SPECIAL

\$7.00 YEAR LONG

LARGE Toppings OR MEDIUM

UP TO 5 TOPPING!

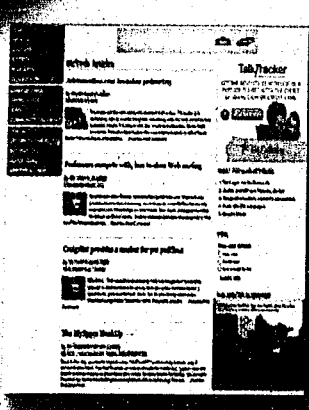
CALL 367-9200

BETTER INGREDIENTS.

CARRY OUT OR DELIVERY TO DORMS ONLY.

BETTER PIZZA.

arbiteronline.com



**New School
Year...**

New Online Features...

New Look!

New Website

The Arbiter joins the podcasting craze



Shannon Morgan, a podcast host at The Arbiter, begins to record a

PHOTO BY BRANDON STOKER, THE ARBITER

BY RYAN RASMUSSEN
Arbiter Staff

Podcasts are the new wave of broadcast technology. Podcasting is spreading rapidly across the globe, and being used for both personal and business means. It is also a new tool in use at universities.

Boise State University President Bob Kustra has a podcast available on BSU Radio called "New Horizons in Education."

The weekly production features regular guests in specialized fields who discuss issues pertaining to higher education.

A Podcast is an audio file in mp3 format that can be downloaded to a computer and transferred to an mp3 device, such as an iPod.

Fans can subscribe to daily or weekly broad-

casts that are automatically downloaded to their computers.

There is a vast array of podcasts now on the Internet, ranging from art and cooking to government and movies. Great sources for podcasting subscriptions are podcastingnews.com and iTunes.com.

The Arbiter first used podcast technology to broadcast the ASBSU debates last semester so that students who missed them were able to download and listen.

In fact, there were more students tuning in to the podcast than attending the actual debates.

In the coming year The Arbiter will be posting more podcasts online, covering a wide range of subjects and including a large diversity of guests. Students can even start their own

podcast through The Arbiter.

Many BSU students already use podcasts in their daily lives.

"I have been using them lately as a new sourcing tool for some of my writing assignments," said Chrissy Lespade, an English major.

Marcco Cardiel, a Business Administration major, likes to download tutorials on cooking NBA playoff scores. "I missed some of the games because I needed to study for finals, so I downloaded highlights later on."

Several campuses across the nation are using podcasts in their curriculum, including: Duke, Purdue, Stanford, Brown, Washington and several other schools.

Many implement iPods directly into particular classes.

Duke students enrolled in courses using iPods will be able to purchase one with a microphone at a subsidized price of \$99. Faculty teaching a course using iPods will receive one for free.

According to the Duke Digital Initiative, "We will continue to support academic use of iPods, but will position the iPod as a course supply, much like a textbook." Professors can now record lectures as they give them and then post them after class. Students can then download the lecture to review notes, clarify difficult subjects, or make up a missed lecture."

Many Professors already use Power Point as a visual aid; podcasts now provide the audio accompaniment for class.

Professors compete with, ban in-class Web surfing



PHOTO COURTESY KRT-CAMPUS

Internet surfing could be distracting to students and lead to a laptop ban during classtimes.

BY JODI S. COHEN
Chicago Tribune

As professor John Decker reviewed bail guidelines and other criminal procedures one recent evening, some students in his DePaul University Law class had other things on their minds.

One student shopped on eBay for Cirque du Soleil tickets. Another switched between checking her e-mail and Fox News headlines. And, from the back of the room, a 24-year-old White Sox fan refreshed his screen to see whether the team was still ahead of the Pirates.

With universities rapidly installing wireless networks, Internet surfing has taken the place of the crossword puzzle as the most popular classroom distraction. Some profes-

sors are so fed up, however, that they're banning laptops or finding ways to shut off wireless Internet capabilities.

"One of my jokes is that I'm willing to compete with Minesweeper, but not with the entire Internet," said Michigan Law Professor Don Herzog.

Herzog said that when he first suspected students were checking the Internet during class, he sat in the back of his colleagues' classes as an experiment and saw that about 85 to 90 percent of students were doing so.

The problem, professors say, is that Internet use can be distracting not just for the user, but also for anyone sitting behind that student.

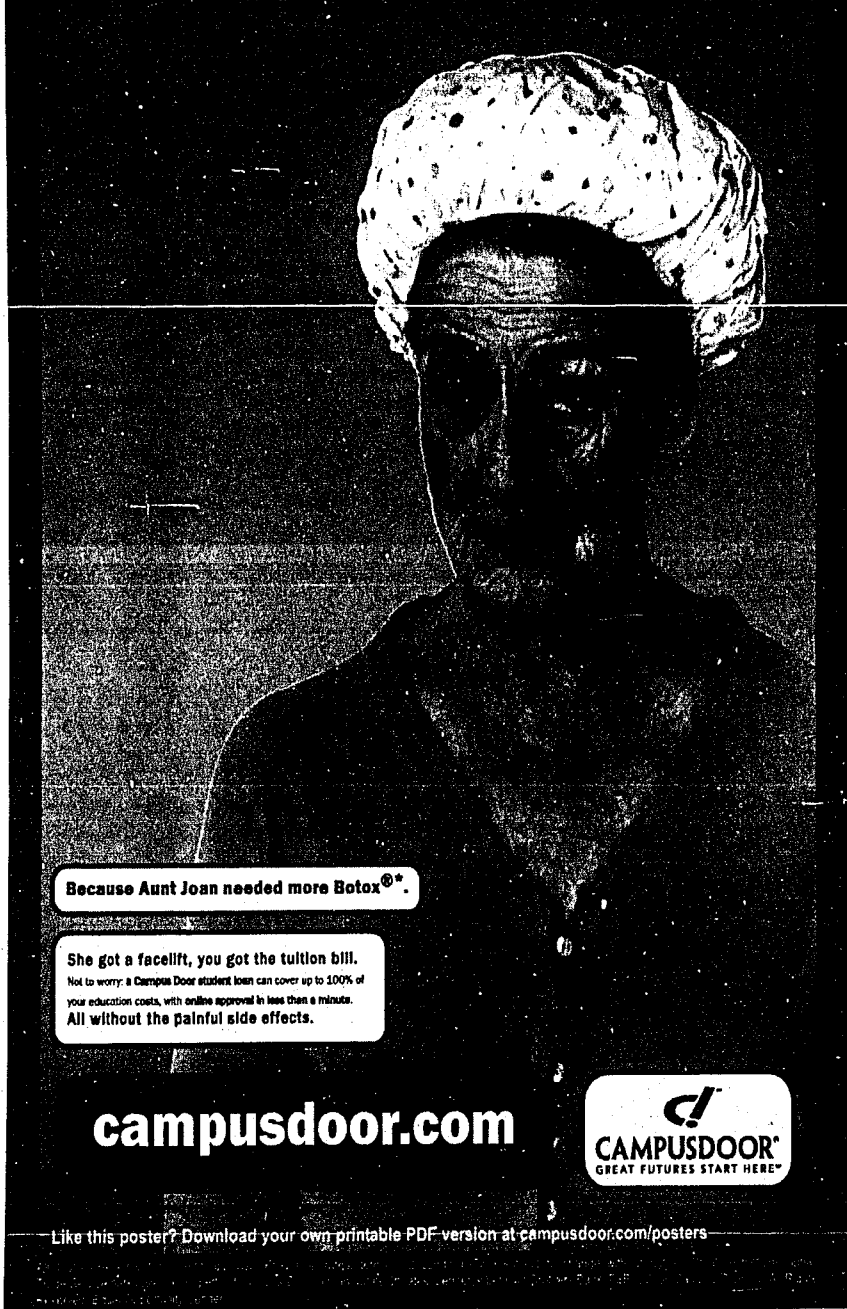
That's among the reasons why Harvard University Law Professor Bruce Hay banned the computers from his wireless-enabled lecture hall this past year.

"My sense is that the quality of classroom discussion has gone down in the past five or six years. I think that more or less corresponds with the widespread introduction of laptops," Hay said.

At the University of Chicago Law School, Professor Randy Picker has no intention of banning laptops or Internet access. About 90 percent of his students bring computers to class, and he encourages them to use the university's wireless connection to pull up his PowerPoint slides or research a topic raised during class discussion.

"Obviously the Web is something of a distraction, but there are a lot of distractions," Picker said. "My job is to make them want to pay more attention to me than what is on the screen."

MONEY FOR COLLEGE NOW



Because Aunt Joan needed more Botox®.

She got a facelift, you got the tuition bill.

Not to worry: a Campus Door student loan can cover up to 100% of your education costs, with online approval in less than a minute. All without the painful side effects.

campusdoor.com



Like this poster? Download your own printable PDF version at campusdoor.com/posters

Craigslist provides a market for pot peddlers

BY NATHAN HURST
The Seattle Times

SEATTLE - The classified-advertising Web site craigslist has become popular in recent years with young, tech-savvy city dwellers seeking apartments, jobs and for-sale items.

But it's also been used as an information-age black market for marijuana dealers. "I'm not too concerned about getting caught," said Eric, a Bellevue man in his early thirties who peddles pot through craigslist.

Local and federal law enforcement officials said they're aware dealers are turning to craigslist and other Web sites for pot, but the amounts sold are generally small and they are not very concerned about the trade.

Eric says he doesn't sell much pot, but if any — but sells enough to make a few dollars for free.

He sells small amounts — usually an ounce, which brings in \$30. Some of his clients are friends or friends of friends.

But as some customers have moved away, no longer want to light up, he's found a new demand online.

Eric scans craigslist for ads placed by people who are seeking pot.

More often than not, he'll find someone posting an ad looking for marijuana using code names like "Mary Jane," "MJ," "the sticky icky," "the chronic" and "420."

Recently, however, Eric posted an ad on

craigslist indicating he was willing to trade marijuana for sexual favors from women or money from men.

Men who offered up a woman for sex would get a discount.

"It's not prostitution," he said, noting he had completed a few transactions in response to the ad. "It's like a date, just weed instead of a dinner."

Eric doesn't flaunt his pot-dealing and said he doubts his neighbors—or law enforcement—know what he does.

Jeff Egan, an attorney for the U.S. Drug Enforcement Administration's Seattle office, said that the amount of illicit drugs sold via online sites is generally so small that his office has specifically gone after craigslist users selling dope.

Eric said he has seen to offer up an online ad for all drugs such as Xylocaine, Tylenol and Ritalin — all legal prescription drugs—to people with prescriptions at a high profit margin.

But as some customers have moved away, no longer want to light up, he's found a new demand online. Eric scans craigslist for ads placed by people who are seeking pot.

Police in other cities around the country have been increasingly vigilant against online crime via craigslist and other sites.

Last year, Boston police arrested five women suspected of running a prostitution ring that advertised on craigslist.

The MySpace Hookup

BY BRIDGETTE WILLIAMS
Quick

Back in the day, you had to explain away "HotDude77" and his daily e-mails only if someone saw them. You had to come up with an excuse for mysterious guys in your cell phone address book only if someone took notice.

But now there's MySpace, the no-work-required spy tool of choice for jealous boyfriends and suspicious girlfriends.

The MySpace place in relationships is sketchy. On the one hand, if you want to go skulking around the Internet, approving new "friends," that's your business, right? But on the other hand, it could be the first step into a hell of your own making, beginning with:

-Approval. MySpace encourages you scroll through pictures of various hotties literally lined up waiting for you to pick as many as you can handle. It's got a kind of brothel-like quality. You know, where the girls all line up and you can choose your "companion." We saw it on TV once, really late at night, after your bedtime if you're under 25).

Leaving secret messages. Nothing good can

come from you trading messages with some Internet floozy. We can't read what you're doing, but we know you're doing it.

-Internet people. Trading saucy e-mails with a chick miles and miles away may not qualify as adultery (good for you.) But if we can't go find the MySpace Man-stealer and beat her down, we have to take our frustrations out on someone (bad for you.) We could trust you, of course, but we aren't the one who approved her, are we?

-The Top 8. All it takes is one passive-aggressive shift from first to second place to set off a whole bunch of badness. First she'll freak out. Then she'll move you to second place on her Top 8.

Her best friend will notice the demotion and leave a comment on your girl's blog asking if the two of you have broken up. You'll read that conversation and work yourself into a testosterone fit and, in revenge, will change your status from "In a Relationship" to "Single." And the cycle starts all over again.

The days of doing your dirty on the down low are gone. Freakin' MySpace. I think I'll change my status to "Bitter."

SAY IT

SIGMA ALPHA LAMBDA, NAT'L HONORS & LEADERSHIP ORG. IS SEEKING FOUNDING OFFICERS/ MEMBERS TO BEGIN A CAMPUS CHAPTER at Boise State. CONTACT RMINER@SALHONORS.ORG

Stay in shape & have fun! Intermediate tennis player looking for opponents to play. Call Dan @ 218-779-7716 (cell).

RENT IT

Roomate needed. 3 bedroom 2 bath house in subdivision. \$250 per month plus utilities. 2 rooms available. Call (253) 820-7536. 5 min from Boise State West campus.

HOME FOR RENT 3 br 1 bath all apts incl. big kitchen, sep laundry rm w/d, fenced yard, close to grn blt off park ctr. 2200 amy. \$950+dep, disc w/1yr lse, pets negot. Avail now. (208) 401-0157

RENT IT

Attending BSU?

FRPM has nearly 100 rentals next to BSU. No need for a car here!

Studios, 1 bedroom, 2 bedroom, and 3 bedroom DISCOUNT.

We offer move in discounts of up to one whole month free!

View all our properties on our WEB-SITE.

PROPERTY MANAGEMENT 321-1900 www.frpmrentals.com

RENT IT

Specializing in:

New Construction First Time Home Buyers Relocation Investment Properties

Jessica Hunt Real Estate Professional

www.jessicahunt.com C 208.412.1677 F 208.433.4587 jhunt@hollandrealty.info

HOLLAND REALTY

RENT IT

Make the Smart Move to Home Ownership!

Prequalify today at IdahoMortgage.com

brought to you by Idaho Housing and Finance Association

1-866-432-4066

RENT IT

Move-in Special Lakeharbor

1,2 & 3 BR includes all appliances plus W/D Large pool and spa, 24 Hour Fitness Center Tanning beds and much more! Ask about our terrific move-in specials Call today

853-5253

SELL IT

1996 Honda Sedan. Good little car. Call 208-869-0809.

CASH PAID FOR UNWANTED CARS. 208-629-6546 Garden City

1993 CHEVY CORSICA 4 cylinders automatic 4 door Blue \$595obo 208-629-6546

Mattress, king pillow-top mattress & box. Never used. Still in factory wrapper. Cost \$550, sacrifice \$295. (208) 919-3080.

Queen orthopedic pillow-top mattress box. New in plastic. Cost \$400, sacrifice \$195. (208) 919-3080.

Pool table, 8 ft. table, 1" slate, leather pockets, Aramith balls, acc. pkg. included. New in box. Cost \$4,500, sell \$1,450. (208) 362-7150.

Be seen. **The Arbiter**

comics

horoscopes

BY LINDA C. BLACK Tribune Media Services

<p>AND THAT'S WHY I RECOMMEND USING THIS PROCESS.</p>	<p>THE OFFICE NEMESIS</p> <p>HAVE YOU DONE A COST-BENEFIT ANALYSIS FOR EVERY CONCEIVABLE OPTION?</p>	<p>SAFETY VIOLATION! SAFETY VIOLATION!</p>
<p>BY NOW, YOU'VE NOTICED THAT YOUR JOBS ARE HIDEOUS NIGHTMARES OF FRUSTRATION AND UNDERPAYMENT.</p>	<p>BUT WHAT YOU DON'T KNOW IS THAT EVERY OTHER COMPANY IS EXACTLY THE SAME.</p>	<p>REDUCE EMPLOYEE TURNOVER... CHECK.</p>
<p>DROP THE CELL PHONE. I DARN YOU TO HECK.</p>	<p>SERIOUSLY. DON'T MAKE ME USE THE SPOON.</p>	<p>I'M SORRY IT HAD TO COME TO THIS.</p>

Today's Birthday (08-16-06). You've been climbing, and this year, you'll come up to a higher plateau. Relax and celebrate with friends, recent accomplishments. To get the advantage, check the day's rating: 10 is the easiest day, 0 the most challenging.

Aries (March 21-April 19) Today is a 9 - Do the reading and find another way to achieve your goals. You're not only gaining success, you're also gaining wisdom.

Taurus (April 20-May 20) Today is a 6 - It's time to start pouring money into a household project. This is where your careful planning starts saving you plenty.

Gemini (May 21-June 21) Today is an 8 - The fog is beginning to clear. The story starts to make sense. You're on the right track. Keep pushing.

Cancer (June 22-July 22) Today is a 5 - Reading a book, in the privacy of your own secret hiding place, leads to an increase in revenues. Start by selecting the book.

Leo (July 23-Aug. 22) Today is a 7 - Your mood improves as you find yourself surrounded by kindred spirits. Finally, you have somebody who understands and appreciates you.

Virgo (Aug. 23-Sept. 22) Today is an 8 - If you take on more responsibility, your life will be less of a struggle and more an adventure. Funny how that works.

Libra (Sept. 23-Oct. 22) Today is a 5 - Don't try to impress your friends by spending a lot of money on them. They'd have a good time, sure, but then you'd have to do without something else. Let them help pay.

Scorpio (Oct. 23-Nov. 21) Today is a 5 - Don't count your money while the game's being played; wait 'til the others go home. Odds are good you've done better than expected. Don't tell anyone.

Capricorn (Dec. 22-Jan. 19) Today is an 8 - You're getting into work mode now. You're acting like a squirrel, hiding away as much as you can for later. This is good.

Aquarius (Jan. 20-Feb. 18) Today is a 6 - You're quite attractive now, and it's because you're feeling good. Others are charmed by your ambiance even more than by your words.

Pisces (Feb. 19-March 20) Today is an 8 - Conditions are better for change at home and in your work routine. Suggestions you make now are more likely to be met with hearty applause.

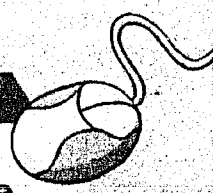
(c) 2006, TRIBUNE MEDIA SERVICES INC. Distributed by McClatchy-Tribune Information Services.



The Arbiter

visit our website at www.arbiteronline.com

Read the paper → Respond online



SELL IT

Dining set, cherrywood, 63" hutch & Buffet, 78" table w/2 leaves, 6 curved back chairs. Dovetail drawers. Side server also available. Cost \$9,000, sell \$2,800 firm. (208) 362-7150.

Bedroom set, cherrywood, solid wood construction. Sleigh bed, 2 nightstands, dresser w/ mirror, tall chest, TV armoire, dovetail drawers. Will sell all or part. Cost \$10,000, sell \$2,900. (208) 362-7150.

TRAILER - MUST SELL!
Close to BSU-181 N. Liberty #15 off Emerald.
\$9,900 for 2 bedroom/2bath. Located in quiet cul-de-sac. Sits on large lot with shed in back. Call Maple Grove Estates to see-322-6322.
Owner willing to finance with down payment, cell 208-521-4629.

COUCH Modern looking tan couch w/ subtle black accents. Owned by married couple with no children. Clean, good cond. \$100 obo. (208) 353-5757

WORK IT

BEST PART-TIME JOB IN TOWN!
Earn Extra \$\$ Callers needed to contact Public Television viewers, short-term P/T positions. \$7.09 hr. Mon-Thurs, 5-9pm. Pick up applications at 1455 N. Orchard St. Boise. EOE. No experience necessary. We train you! 208.373.7341

WORK IT

career center

On- and off-campus jobs and internships for current and graduating students

Check out

bronco
BOISE STATE UNIVERSITY

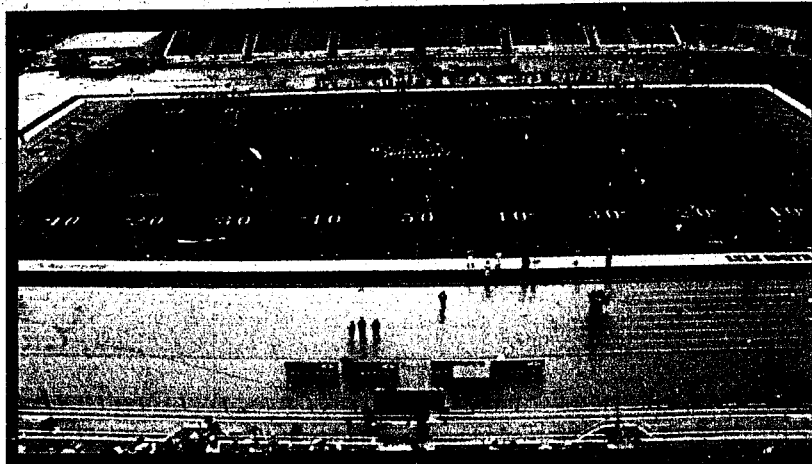
<http://career.boisestate.edu>

Now Hiring

Carpet Cleaners
Part time 12-6am
\$400 for 7 days a month
No prior experience necessary

Call 208.859.8959
or visit
bisonflooring.com

ACTORS, EXTRAS, MODELS
Students needed for Idaho's Films, T. V., Extras, Modeling. Daily rates \$72-\$770. No exp. Not a school. 208-433-9511



like the view?

Sit in the press box. Now accepting applications for Sports Editor

Email jobs@arbiteronline.com

The Arbiter
JOIN THE TEAM

new year...

arbiteronline.com
BOISE STATE'S INDEPENDENT STUDENT NEWSPAPER

new look

Sudoku By Michael Mephram

Level: 1 2 3 4

2					9			5
		7	5		1		9	6
		8			7	3		
								7
		1	2		6	5		
8								
		3	4			9		
4	7		3		5	2		
1			7					3

Level: 1 2 3 4

	8		5	7				
3								8
	5	7					3	
		8	1	9		3	4	
2								9
	1	3		8	2	6		
	9					4	2	
8								6
				3	4		1	