

11-7-1974

Arbiter, November 7

Associated Students of Boise State University

Although this file was scanned from the highest-quality microfilm held by Boise State University, it reveals the limitations of the source microfilm. It is possible to perform a text search of much of this material; however, there are sections where the source microfilm was too faint or unreadable to allow for text scanning. For assistance with this collection of student newspapers, please contact Special Collections and Archives at archives@boisestate.edu.

amortera

Issue 10

BOISE STATE UNIVERSITY

November 7, 1974



LIFE or DEATH

This is a landmark year for Idaho students. With the ensuing recessive economic situation and the instability of the job market, whatever the respective state governments allocate to the educational system will mean either life or death to mass higher education in the United States.

It is up to the students to see that they get what they and their institutions deserve from their legislators. How does the student go about doing this?

The Idaho Student Lobby is one organization that, if handled correctly, could be a valuable instrument in garnering additional funds for Idaho's educational system. The major reason behind this statement is this: the sectionalism inherent within the political system can be best dealt with when the concern at hand is produced, programmed and presented by groups or individuals from each of the respective sections to their respective legislators.

The ISL is the major influence in handling of student related issues which will be present at this upcoming legislative session.

Though Boise State University has its own lobbying committee, the Boise State University Lobby, it is important for this university to be a part of the Idaho Student Lobby in order to insure the appropriations for the rest of the state's institutions as well as Boise State University. The general allocations for the state's institutions of higher learning must be guarded, and our interest in these allocations must be assured.

The Boise State University Student Lobby is an important faction which will barter with the legislature to bring about more monies for building appropriations and more adequate faculty representation. This is a special interest group, dedicated to the improvement of this university; however, the importance of higher education in this state must be dealt with by the ISL if we as students are all to benefit.

Whatever mode of lobbying force we the students of this institution employ, whether it be the ISL or the BSU Student Lobby, we must stand fast and true to the idea and ideal of higher education as a whole. Let us be united with the students of Idaho in a genuine comradery so that we may achieve the greatest benefit for all concerned parties and institutions.

J.W.E.



Homecoming Queen Sandy Brewer and Mr. Bruce Doug Jones were chosen Tuesday night just before the Robert Klein Lecture.

Food service commended

Editor, the Arbiter:

Recently I attended a workshop on the BSU campus and was pleasantly surprised with the fine meal provided through the University's food service program.

Not only was the quality of the food excellent, the variety and number of extra commodities were outstanding.

To top off all this, the program provided cheerful and cooperative service at the same time. The BSU students have one of the outstand-

ing food service programs in the country!

It was also a pleasure to witness the enjoyment the students had in the hamburger eating contest. Both the spectators and participants appeared to be having a blast! It appears that the food service program at BSU has a genuine interest in providing a quality program to the students they serve. My hat's off to them and the University.

David Perkins
Director of Student Personnel
College of Southern Idaho

letters to ed.

Five o'clock and all are gone

Editor, the Arbiter,

I've had it with this god-damn jock school. Apparently the sole purpose of existence for Boise State University is to legitimize the formation of a football team. The next time the good Dr. Barnes goes before the legislature to request money, I hope he at least bares this truth and doesn't COME ON WITH A LOT OF SENTIMENTAL DRIVEL ABOUT ACADEMICS. Because it just doesn't wash, Doc.

As I write this, it is Saturday, the second of November, and the glorious Broncos have just scored a smashing victory for the great American Way by crunching Weber State. This is certainly the most important thing happening on the campus of this "school." I use the term very loosely today. Of very little concern is the fact that within a 30 minute period no less than five people have been denied access to the swimming pool on campus and the pool is not due to close for another 30 minutes. My wife and I are among the five, along with a student who is a writer for the Satesman. Two others and my wife and I had driven 20 miles to use the pool only to be told that on football days there aren't

enough people to keep the pool open. If I pay tuition to keep this school open and that pool is scheduled to stay open til five, then by God it should stay open until five or I should get a refund on my tuition. I don't care if only one person is swimming and Knap's kids are whaling the Green Bay Packers. The school has an obligation to that one tuition payer to fulfill its commitments.

But beyond this one incident there is more that gravels me about the clear attitude on the part of the administration that BSU exists mainly to give life to a football team and to have parties. Its now a little after five this Saturday afternoon, the football game is over and there is nothing to do except to go find a party or watch the tube or sit in the SUB and have your ears assaulted with Monkey-man Rufus or some disc jockey screaming out of hundreds of built in speakers all over the ceilings. If you have an idea to study, which is what your folks thought you went to school for, forget it. The library closed at five. At five o'clock every Saturday afternoon the library tells all prospective seekers of know-

ledge to go find a party somewhere. Then I guess the party-finder is expected to attend church the next morning to repent his excesses because the library doesn't open again until two in the afternoon on Sundays. What is the purpose of a 5 p.m. closing time on Fridays and Saturdays and a 2 p.m. opening on Sunday? Are we being subtly coerced to lay aside our studies and go cheer the fabulous Broncos on or go get smashed at some frat party? Is it a money thing? Can't the school find enough money to pay librarian salaries for another few hours each week, thereby helping some student make the money to pay tuition to subsidise the team? What's a couple of bucks for librarian salaries compared to the money that is funded into the hands of a few jerks, I mean jocks?

Let's get honest. Either we admit to the legislature that we're a football team and not a university or we find a place for students to study and make the library and other facilities available to them whether or not they care to take part in the extra-curricular activities.

Terry McKay

Short sticks are not by choice

Since becoming a member of the learning community at Boise State University, I've seen several inequities within the state's institutions of higher education. As a taxpayer in this state and as an individual wanting to receive the best possible education, it's my duty to attempt to resolve, or at least bring it to the attention of our legislature and taxpayers, the problems within higher education.

Below, you will find several reasons illustrating why I feel that Boise State University is GETTING THE SHORT END OF THE STICK!!!!!!!!!!!!

The following are institutions and their headcounts, fall 1974: BSU-10,002; U of I-7,676; ISU-8,172; LCSC-1,592.

The following are the institutions and total budget appropriations of each, 1974-75: BSU - \$9,997,140; U of I - \$18,711,145; ISU - \$12,441,058; LCSC - \$1,840,917.

The following are the institutions and ratio of students per faculty members, fall 1974: BSU-20.6; U of I-18.2; ISU-15.8; LCSC-14.5.

The following are the institutions and the general fund appropriations percent of education budget: BSU-1971:4.77;1972:5.32;1973:5.51; 1974:5.22; 1975:5.28; ISU-1971:6.78; 1972:6.72; 1973:6.90; 1974:6.23; 1975:6.38; U of I-1971:9.66; 1972:9.02; 1973:9.34; 1974:8.60; 1975:8.83; LCSC- 1971: .78; 1972:.82; 1973:.81; 1974:.70; 1975:.75.

Although Boise State University has the highest enrollment, other key areas, such as funding, number of buildings and campus acreage are not commensurate with this.

With all of this information in mind, these three questions must be answered!!! 1. Why is BSU's student-teacher ratio highest? 2. Why is the budget so low in view of

enrollment? 3. Why aren't state funds available for new buildings?

It is my personal feeling that Boise State University is, indeed, GETTING THE SHORT END OF THE STICK, and that you as a taxpayer and voter from one of the many counties represented by BSU students, can and must elect legislative officials willing to delete these inequities.

I have attempted to show you how much support Boise State University needs in order to maintain the quality of education here, but without your assistance the University of Idaho and Idaho State University will again rob Boise State of it's BADLY needed funds.

Please help Boise State continue on the upward.

Kit D. Christensen
ASBSU President

Trivia Question

THIS WEEK'S QUESTIONS: Two stereo albums courtesy of TEAM ELECTRONICS

- 1) In what year did the War of 1812 end?
- 2) Name two plays written by Christopher Marlowe
- 3) What female singer has sold more records than any other female singer in history?
4. Who is the King of Belgium?

This week's prize will be:

Last week's winner: PAUL GERHING
Following answers: Mozart, Martin Van Buren, Yerby, Parker, Dowdle, Betcher, Elliott, They disappeared. M.G. Gerhing won two albumscourtesy of TEAM ELECTRONICS

The Arbiter is published weekly by the	Artist	Grady Myers
Associated Students of Boise State Uni-	Photographers	Don Hays
versity. The offices of the Arbiter are		Dustin Couey
located on the second floor of the		Russ Waegelin
Student Union Building, Boise State		Dan Coughran
University, 1910 College Boulevard,		Ray Stevens
Boise, Idaho 83725.	Layout Assistants	Triah Coonts
Articles and letters to the editor must		John Keobough
be received prior to 3:30 p.m. Friday		Mike Riddlemoser
before publication. All articles and	Reporters	Jo Elliott-Blakeslee
letters to the editor must be typewritten		Bob Kasseo
and bear a legible signature.		Tim Ritter
		Karin Sobillon
Editor.....	John W. Elliott	Vicki Yee
Asst. Editor	Buck DeMotte	Kathy Alters
Bus. Manager	Scott Harmon	Chris Gabetas
Layout Ed'	Mark Stinson	Barb Bridwell
Feature & News Editor	Pat Nance	Huck Hovey
Sports Editor	Melinda Scharf	Cartoonists
Ad Sales.....	Kathy Roper	Randy Walradt
Copy Reader.....	Gwyn Harms	Staff Asst.
		Susan Smith

PEOPLE

BY DON HAY



Meistersingers offer excitement

by John Irwin

A very special and exciting evening of musical entertainment was offered Sunday October 27. The BSU Meistersingers and Jazz Ensemble provided a program of jazz and popular music displaying to rare advantage the richness and beauty of a well-trained choir as well as the spine-tingling effect of jazz properly done.

Opening the concert was the Meistersinger rendition of SKYLARK a 1940's vintage tune of Hoagy Carmichael with a difficult Norman Luboff arrangement calling for drastic dynamic changes and precise harmonic accuracy. Following the lush vocal style of SKYLARK came BLUE RONDO A LA TURK originally an instrumental piece by Dave Brubeck arranged for voices by Luboff. Startling to the audience perhaps were the instrumental type lyrics consisting largely of "pah, pah paha" and "bah yup ups." The unusual lyrics and style were supported and completed by the piano and guitar accompaniment of Darcey Burchfield and Glen Grant. Darcey's piano accompaniment and scat singing type piano solos were particularly praiseworthy.

Rounding out the Meistersinger part of the program was THEY CALLED HER MOSES. A cantata based on traditional spirituals telling the story of Harriet Tubman, a former slave and a leading force in the formation and operation of the famous pre-Civil War underground railroad. "Moses," a huge choral piece of six sections displayed to considerable effect the conducting style of Will Elliot, department chairman, as well as the depth of his choir. "Moses" utilized the talents of fourteen different vocal soloists.

The Jazz Ensemble, a small jazz band under the competent direction of Mel Shelton, opened with GRANADA, a traditional tune of the big band era featuring a mellophone trio. A mellophone is a sort of marching French horn shaped like an overgrown trumpet. Following Granada was PARENTHIA, a heavy jazz number.

Then, undeniably, one of the highlights of the evening, was Curnow's TRAJECTORY, primarily based around the wonderful jazz trombone solo of Mike Elliott. Somehow or another, Mike was able to make his heavy cumbersome brass dance like a woodwind. Mike's solo more than made up for a little - shall we call it clumsiness? - at the beginning of his narration for the Meistersinger MOSES. When reading, he did perform quite well, however.

Duke Ellington's TAKE THE A TRAIN followed, not quite as exciting a number as some preceding. Next on the program was DED RICKONING, a solid jazz piece by Boise's Gib Hochstrasser. Hochstrasser's DED RICKONING was not overshadowed by some of the immortal jazz with which it shared the bill.

Finishing the program, the rock-jazz MacArthur Park was one of the strongest numbers of the evening. Inter-woven with good effect throughout the arrangement, the flugal horn solos of Kirt Kitchen were beautiful indeed. Incidentally, a flugal horn is a sort of ethereal trumpet. Unfortunately, time does not permit individual mention of all the fine instrumental solos with which the Jazz Ensemble concert was enlivened. However,

let it be said, that they were without exception - excellent.

All in all, this year's Meistersinger and Jazz Ensemble Pop Concert proved a popular and well received evening's entertainment judging from the applause and sizeable even though the BSU news service failed to get the press release publicizing the concert into The Statesman.

The next Meistersinger appearance will be their Christmas Concert December 8 in the Music Auditorium with the BSU Chorale and University Singers. The Jazz Ensemble will appear next semester.

A student view

Wanted: less garbage

by Pat Namee

It was four years ago when I first arrived at Boise State University (then Boise State College), a red brick, lush green campus of beautiful buildings.

Since that time I have noticed a blatant disregard for the environment of this institution. First, there is the incinerator at the SUB. Then, it was the political signs and now the ultimate garbage has hit.

It doesn't matter what the function, but the first piece of advertising used by almost all organizations is an 8 1/2 by 11 flyer. Check the bulletin boards around campus: "Come see this", "Red hot buy on that", "Needed for..." and "Wanted to buy..." appear by droves and multitudes. But then check the dates on the advertising. May, 1973 or Sept., 1972, etc., etc.

Huck's realm

As it was in the beginning...

"It is in the beginning as it was in the end. It is in the end as it was in the beginning. The only thing one has to lose is lose itself, but refrain from seeking a definition of it."

LISTEN: These were the concluding remarks from an evaluation of the planet Earth based on an observation of Boise State University. This report was compiled by Aliens; those Outer Space Beings who give us Culture Shock and Disbelief in time honored dogmas since they aren't human. BSU was selected at random by the Aliens to see how Earth people are, what they are like, how they act, how they are educated, how they treat each other and WHY? The Freaks ascertained all the answers except the last and they left it at that.

THIS IS WHAT HAPPENED: The Beings, called Kadadans, arrived two weeks ago last Friday. Their beer-can shaped vessel hovered continually over the Administration Building, but the design of the ship and habits of the student body created a suitable disguise. The first Kadadan venture outside the hulk nearly proved disastrous as the Aliens, disguised as sidewalk,

were nearly drowned by a runaway hose. During the next few days, however, the entire crew joined in the observatory mission.

THIS IS WHAT WAS SOUGHT:

The Kadadans were curious as to why Earthlings find it so easy to live in an irrational society; to be unkind, deceitful, narrowminded under the guise of goodness in faith and still laugh.

THIS IS WHAT THEY DID:

They read the University catalog, literature, went to classes, evaluated Instructors, watched Student Government in action, etc.

THIS IS WHAT THEY FOUND:

The Kadadans discovered that theory and fact do not coincide at any level on Earth as seen at BSU.

The Kadadans left disappointed. They felt civilization on Earth had progressed further, but were convinced by a flourish of self-interest, apathy, dogma, ethnocentricity and wall-nailers on this campus the error of their thoughts. They said they would return when we understood this:

"It is in the beginning as it was in the end. It is in the end as it was in the beginning. The only thing one has to lose is lose itself, but don't ever ask for a definition of it before you know yourself."

ASB Senate endorses Idaho Student Lobby

Tuesday, the ASBSU Senate unanimously consented to give the Idaho Student Lobby their endorsement for the upcoming ISL lobbying session. The Senate declined to allocate ISL any money until the fall conference is held in November and the Executive Council decides on the exact amount Boise State owes. The money is forthcoming as soon as that amount is determined.

Mick Meyer, Executive Director of the ISL, explained ISL's budget and the referendum to be taken within the next few weeks. Meyer stated that all the institutions in the state except Ricks College have joined ISL this year.

In other business, John Elliott, editor of the Arbiter, brought a proposal before the Senate to establish a photo bureau. This bureau would incorporate the present photo staff of the Arbiter and the Les Bois into one unit. This bureau would be responsible for all photo activity of both student publications. They would also be available to take pictures of student activities for clubs and organizations.

The Senate withheld judgement on the proposal until the Finance Board has a chance to consider it for funding purposes.

The Senate passed a resolution which entitles the election board chairman to receive a salary of \$50 per election, not to exceed \$500 per academic year.

Steve Mengal, current chairman of the election board, stated that this was adequate for the amount of work that goes into each election.

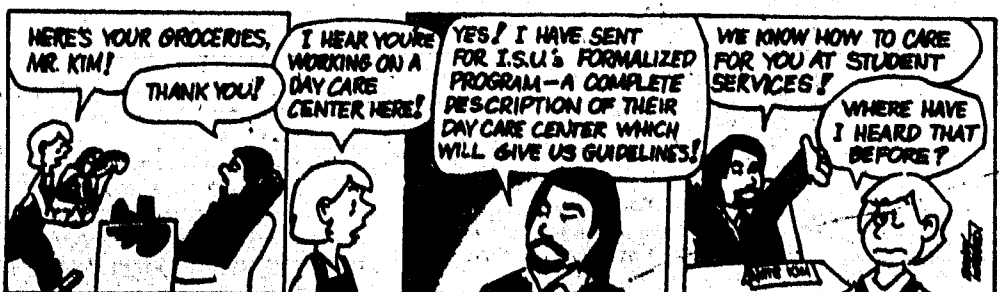
The election board handles the ASB elections each year, as well as the homecoming elections and any referendums that are held.

Chairman Dave Ward stated that Dr. John Barnes will speak to the Senate November 19 concerning the construction of the Scholarship Box in stadium.

I guess that's what we have custodians for, to clean up after us.

Oh yes, then there are the dances at the Mardi Gras. Alpha Kappa Psi, Sigma Tau Gamma, and so forth, enjoy sponsoring these joyous festivities but obviously they don't like what they should do afterwards. That is, CLEAN UP after themselves. The signs are good advertising on the lawn but buildings and grounds personnel should not be expected to pick up after student functions.

It is a shame when persons of the age group that attend this institution, who at one time took to the streets in demonstration for the preservation of the human race, cannot force themselves to stoop so low as to pick up the litter and garbage that accumulates from function to function.



COLUMNS

ATGSB scheduled at BSU

Boise State University's graduate business school in conjunction with 370 other graduate schools across the nation, is offering the Admission Test for Graduate Study in Business (ATGSB).

This test is required of all applicants to BSU's graduate business school and will be given:

November 2, 1974

January 25 - March 22 - July 12, '75
Registration materials for the test and the ATGSB Bulletin of Information are available from:

Graduate Admissions Clerk
Room 101 - Adm. Building

or write:
ATGSB
Educational Testing Service
Box 966

Princeton, New Jersey 08540

The regular ATGSB fee of \$12 includes a score report sent to the candidate, to his undergraduate placement officer, and to as many as three graduate schools designated on the registration form. ATGSB registration forms and test fees must be received at ETS on or before the registration deadline announced in the bulletin. A \$3 late fee will be charged for registration

forms received after the deadline. Candidates who cannot register in advance may wish to consider registering at the test center on the day of the test. Walk-in registration is permitted at all test centers if sufficient space and test materials are available after all normally registered candidates have been admitted. To be admitted as a walk-in registrant, a candidate must present a completed registration form and a check or money order for the regular test fee plus an additional \$10 service fee. The \$3 late fee does not apply here.



Idaho Student Lobby has openings available

The Idaho Student Lobby has openings for four lobbyists and a public relations person.

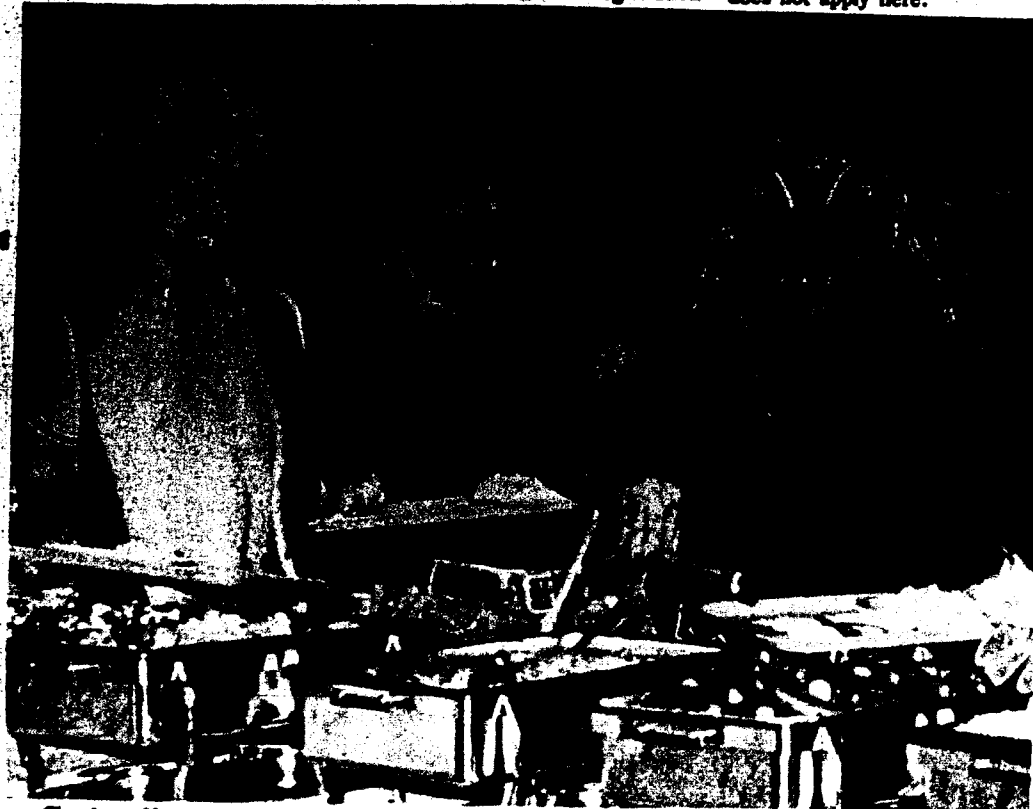
Lobbyists will represent Idaho college students in the state legislature. Lobbyists will be required to research an issue determined beforehand and work toward having that position adopted by the legislature. This will necessitate testifying before committees. Applicants should have a working knowledge of the legislative process.

The public relations person will be required to publish a weekly

newsletter which will be sent to the various schools of higher education around the state. The PR person will also design a program to promote ISL throughout the state. The promoter will have a legislative press pass and therefore cannot lobby. A knowledge of journalism is helpful, but not a necessity.

Credit is available for both positions, but salaries are not. Staff personnel will live in Boise the first nine weeks of spring semester.

The positions will be chosen by resumés. Send resumés to the Idaho Student Lobby, 1125 W. 6th, Meridian, Idaho 83642.



Classic wolf men won top costume prize among hundreds of Masqueraders at BSU Halloween party Thursday night. Their "trainer" at left is student Jay Brian. Wolf men, l-r, are Jerry Servates and Dewayne Burres.

Homecoming events

The week of Homecoming events scheduled by Randy Birkinbine and the Homecoming Committee appears to be a week full of varied activities that most students will enjoy.

All of the ten Homecoming events will have free admission to BSU students. The only event charging admission is the Blitz Extravaganza scheduled November 8 at the American Legion.

The Homecoming Queen and Mr. Bronco will be crowned at the game at halftime Saturday. The dance Saturday night at the Rodeway will

have music by Today's Reaction and will definitely be a casual event.

Randy Birkinbine, Homecoming Chairman, noted that the planning of this year's Homecoming involved trying to get rid of a conflict of interest in events going on at the same time. He noted that "in the past, too many things were going on. This year, no two things are going on at the same time".

This year's simplified schedule should enable a lot of students to pick and choose the events they wish to attend without the worry of missing something else.

Miss Virginia Laico to perform at BSU

Miss Virginia Laico, 1973 Young Artist Winner for the National Federation of Music Clubs will be presented in a concert, Sunday November 10 at 3:00 p.m. in the University Music Auditorium. The 21 year old Phillipine pianist is being sponsored by the first district Idaho Federation Music Clubs and Boise State University.

Miss Laico, a native of Manila, Philippines made her concert debut at the age of 13 when she won the Manila Symphony Artist contest

and was chosen to appear as piano soloist with the orchestra. She has studied at the University of Chicago Conservatory of Music where she appeared as orchestra soloist at their commencement concert and at Peabody conservatory where she is now a member of Preparatory Piano faculty.

Miss Laico is superbly prepared, has a fresh vibrant approach to music and performs with dazzling technique. Tickets may be obtained at the door; \$1.50 for adults and .50 for students.

Bernice Jones shows acrylics

The acrylics of community member Mrs. Bernice Jones will be on show beginning November 1 through the end of the month in the Ada Lounge. Dr. Louis Peck first met Mrs. Jones a couple of years ago when she took a summer course from him. She has shown her work in Fritchman's and other Boise galleries and has had several one-woman shows.

Dr. Peck plans to show a variety of artists' works in the lounge later this year, including that of BSU students, faculty and surrounding community members.

ACADEMIC RESEARCH LIBRARY

Thousands of Topics
\$2.75 per page
Send for your up-to-date, 176-page, mail order catalog of 5500 topics. Enclose \$1.00 to cover postage (1-2 days delivery time).

519 GLENROCK AVE.
SUITE #203
LOS ANGELES, CA. 90024

Our materials are sold for research purposes only

The Budweiser Sweater!

- Warm, breathable 100% Acrylic Sweater
- Built-in collar in non-bleed colors
- Two Collar Styles: Turnneck (shown) and Mock Turnneck (like collar)
- Prints from Budweiser
- Smaller sizes and help support the U.S. Ski Team

Budweiser
KING OF BEERS

Brewed by our original process from the choicest hops, rice and malt barley.

THE LARGEST-SELLING BEER IN THE WORLD

Anheuser-Busch, Inc.

BY LOUIS, MEMPHIS, LOS ANGELES, TAMPA, HOUSTON, COLUMBUS, JACKSONVILLE, MEMPHIS, WILMINGTON

Get it on for \$29.99!

The Budweiser Sweater • Dept. A • 2900 South 9th Street • St. Louis, Mo. 63118
Enclosed is \$_____ (Check or M.O. payable to Anheuser-Busch, Inc.)
for the Budweiser Sweater(s) indicated below:

COLOR STYLE (Turnneck, Mock Turn)	SIZE (Men's M, L, XL; Women's S, M, L)	QTY
TOTAL		

NAME _____
STREET _____
CITY _____ STATE _____

calendar

Thursday, November 7

8:00 p.m. - 12:00 p.m.
Homecoming Movies
SUB Big Four
7:00 - 9:30 p.m.
Boise Junior League
Educational Training Service
SUB Senate Ch.
10:00 - 11: a.m.
Union Staff Meeting
SUB Teton
7:30 - 9:30 p.m.
Alpha Kappa Psi Bus. Meeting
SUB Owyhee
8:00 - 10:00 p.m.
Boise State Chapter - ISEA
SUB Nez Perce
6:00 - 8:00 p.m.
Rodeo Association Meeting
SUB Teton
2:40 - 4:30 p.m.
Student National Education Assoc.
SUB Owyhee
7:30 - 9:00 a.m.

Alpha Omega Bible Study
SUB Clearwater
4:00 - 6:00 p.m.
BSU Nursing Assoc. Meeting
SUB Nez Perce
8:00 p.m.
Pop Film
THE GODFATHER
SUB Ballroom

Friday, November 8

7:30 - 10:00 p.m.
Foreign Films
THE DESPERATE SCOUNDREL
MAJOR BARBARA
LA 106
6:00 - 7:00 p.m.
Esquire Club Meeting
SUB Owyhee
1:30 - 3:30 p.m.
Nursing Faculty Meeting
SUB Bannock

Saturday November 9

12:00 noon
National Ski Patrol Meeting
SUB Lookout
8:30 a.m. - 12:00 noon
Idaho Personnel Comm. Testing
B210, 212, 215, 216
9:00 a.m. - 1:00 p.m.
Idaho Dept. of Insurance Testing
B207

HOMECOMING WEEK

1:30 p.m.
Football Game - BSU vs Cal-Davis
BSU Stadium
9:00 p.m.
Dance - Rodeway Inn
Monday November 11
Veterans's Day-Holiday
Friday November 15
7:30 p.m.
Foreign Film **NAZARIN**
LA106

Sadism runs rampant on BSU campus

by Barb Bridwell

Sadism ran rampant on the BSU campus Wednesday as students and faculty bombed each other in the name of charity with delicious cream pies. By the end of the whole messy affair, \$412.50 had been raised for the United Way.

David Delaney did an outstanding job of auctioning off such big name celebrities as Bob Hoppie, Dr. Peter Bax, Dr. John Barnes, Kit Christensen, Dave Ward, Betty Brock and John Elliott just to mention a few of the good natured victims that took it in the face and elsewhere.

The high bid went to Dr. Bax at \$60. Three people, including his loving wife Christa, did a most thorough job of covering the good doctor, who is head of the Department of Health and Welfare. Low bid of the day went for Dr. Barnes at a measly \$3.50.

The highlight of the event appeared to be the pies aimed at Channel 7's weather girl, Susan Eby. Her pies cost her accosters

\$40 and probably an appointment with the hairdresser.

Bookstore manager Betty Brock's employees bid hot and heavily for the privilege of mashing a pie in her flaming red hair.

The Arbitrator staff bid for the opportunity of delivering a sweet package to John Elliott.

ASBSU Vice-president Dave Ward also caught one in the face, but his remarks are unprintable.

History proff authors article

Publication of an article entitled "Stock Raising in the Shirley Basin, Wyoming" in the JOURNAL OF THE WEST has been announced by Boise State University's History Department.

Dr. Gwynn Barrett, Associate Professor of History, the author of the article has received confirmation that his article has been accepted for publication.

BSU Bulletin Board

The Black Students Union wants more participants from the entire student body in order to organize the group more successfully. They need help to make posters and other materials with which to publicize the group. The organization meets as follows:

Every Sunday

In the Clearwater Room of the SUB 5:00 p.m.

The Black Students Union is open to all creeds and would really appreciate the support of everyone.

"NEW DIRECTIONS FOR WOMEN"

Career Information Fair 1:00 p.m. - 4:30 p.m.

Thursday November 14 SUB Ballroom

Sponsored by Career & Financial Services. Numerous employers will be available to discuss a large variety of careers and the needed training and education.

WANT TO SELL:
Ten-speed bicycle
Brand name "Gitane"
\$75

1 1/2 year old
Good condition
Call 336-1331

Thursday November 7
7:00 p.m., LA 106

ANXIETY AND IT'S MANAGEMENT, "Hypnosis in the Relief of Anxiety". Rev Paul V. Streib.

Tuesday November 12
7:00 p.m., B 105

ESTATE CREATION, PRESERVATION AND DISPOSITION, "Wills".

Offered for Enjoyment by The Foreign Film Committee

GEORGE BERNARD SHAW'S **MAJOR BARBARA**



**REX HARRISON
WENDY HILLER
ROBERT MORLEY
DEBORAH KERR
SYBIL THORNDIKE**

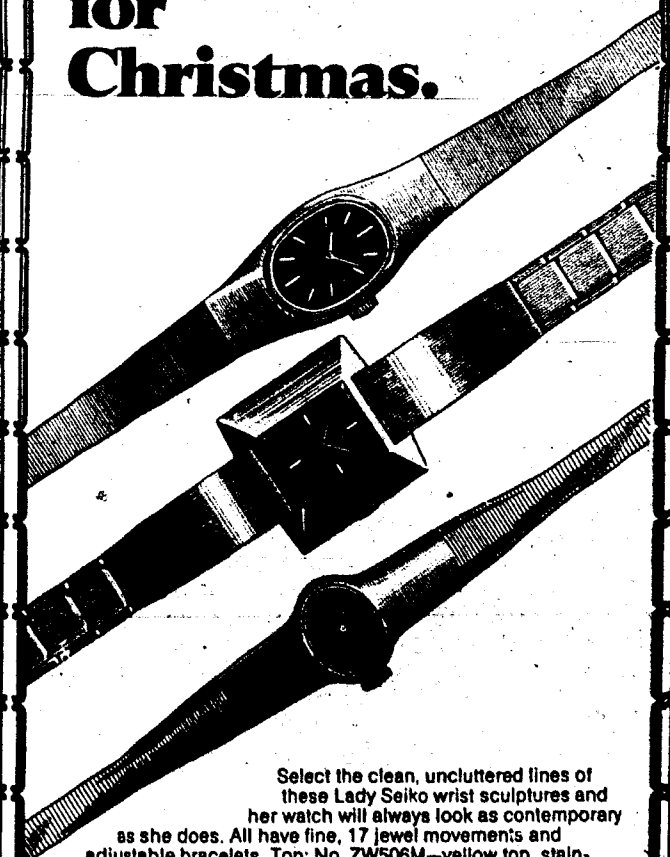
In LA 106

at 7:30 p.m.

Friday Evening

STUDENTS ADMITTED FREE

Lady Seiko features contemporary wrist sculptures for Christmas.



Select the clean, uncluttered lines of these Lady Seiko wrist sculptures and her watch will always look as contemporary as she does. All have fine, 17 jewel movements and adjustable bracelets. Top: No. ZW506M—yellow top, stainless steel back, oval amber dial set vertically, \$125.00. Also in stainless steel with moon glow blue dial, \$120.00. Center: No. ZW426M—yellow top, stainless steel back, black dial, \$85.00. Bottom: No. ZW503M—stainless steel, oval blue dial set horizontally, \$115.00. Also in yellow with black dial, \$120.00.

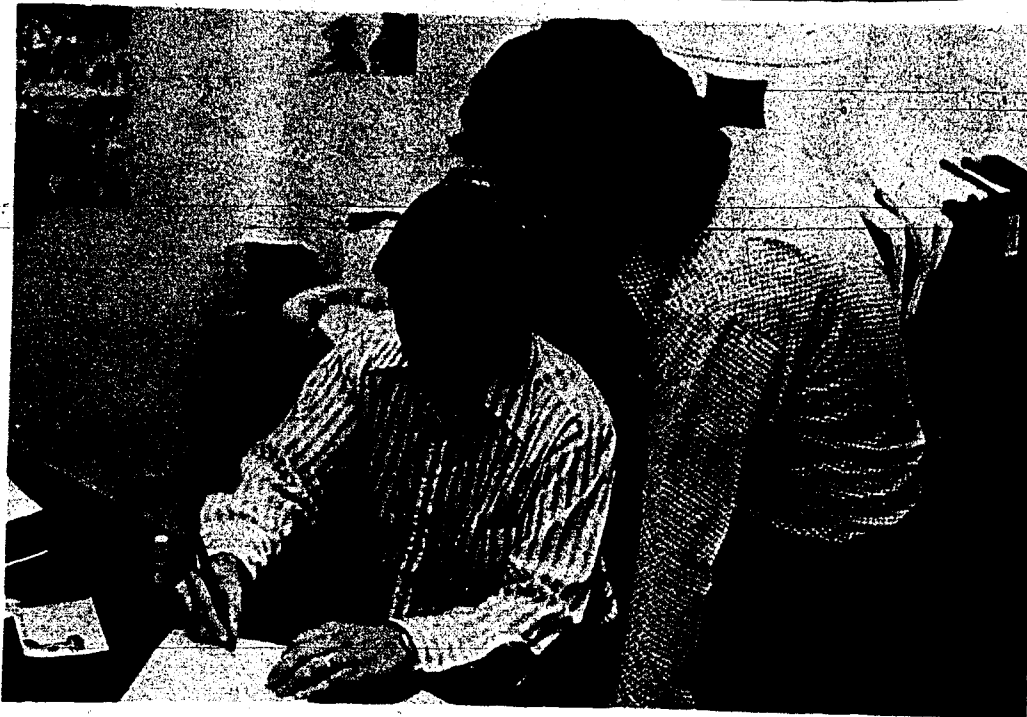
LAYAWAY NOW for CHRISTMAS



JEWELERS

"Across from one capital center"

926 MAIN
344-2266



Kit Christensen and Dave Ward sign the International Student Organization into existence.

Students needed for International Students Committee

Two students are needed to act as representatives on the International Students Committee. This newly formed committee's function is to "establish a central organization to meet the needs of foreign student problems."

This committee will assist foreign students in several ways according to Dave Ward, ASB Vice-president.

They will help foreign students overcome financial problems by finding ways of assisting students financially, helping with inexpensive housing, and by helping the International Club raise money for the students.

Ward stated, "This proposal has more teeth to it because there are

administrative personnel and people who are already involved with foreign students."

The committee will also plan and administer cultural interaction and will establish a BSU student exchange program.

Applications for this committee are available in the ASB offices and should be returned prior to Monday noon.

Another committee position open is the Commencement Committee. This committee plans all commencement activities.

Applications for this committee are also available in the ASB offices and should be returned prior to 12:00 noon Monday.

Summer jobs with Uncle Sam, soon

The Career and Financial Services Office in Room 117 of the Administration Building has available copies of the Federal announcement, Summer Jobs in Federal Agencies, which contains the necessary application for Federal summer jobs.

Most summer jobs for Federal agencies are now filled through a summer employment examination. This examination is only given during the months of January and February. Applications must be filed with the Federal Civil Service Commission by December 13,

1974, to take the January exam. Applications must be filed by January 17, 1975, to take the February exam. Applications post-marked after January 17, 1975, will not be accepted.

Students taking the January exam will have an advantage in obtaining Federal summer employment. Thus, students are encouraged to pick up the summer jobs announcement and file early for Federal summer jobs.

Richard P. Rapp, Director Career & Financial Services

BSU School of Bus. gets Cascade grant

The Boise State School of Business has received a \$25,000 grant from the Boise Cascade Corporation, according to Chuck Lein, Dean of the School of Business.

The grant is the form of allowances of \$5,000 a year for the next five years. \$1,000 of the fund is earmarked for recruiting and development, according to Lein, this fund takes care of the money involved in interviewing potential faculty members for the business school.

This fund also makes it possible for faculty members to travel to conferences.

The other \$4,000 goes into the library fund to build up the holdings of the business department in the library.

Although none of the \$25,000 is directly put into student use, Lein says that students do benefit a great deal from it. It is reinvested into the business department where it helps students two ways.

First, according to Lein, it aids in producing the most qualified instructors and secondly it aids in producing highly qualified graduates.

"This grant is the culmination of a lot of work on a lot of peoples parts," Lein stated.

Eastman Kodak gives \$1,000 grant to BSU

Boise State University has received a \$1000 unrestricted direct grant under Eastman Kodak Company's 1974 Educational Aid Program, BSU President John B. Barnes has reported.

The grant is part of Kodak's educational aid program for schools whose graduates work for the firm. Under the program, the company gives the university \$250 for each

year an employee spent as a student.

BSU's grant is based on the work of David L. Crawford and Michelle Delmar Crawford. David Crawford, a 1964 graduate is now employed in Kodak's Park Division while his wife, Michelle Crawford, a 1965 graduate, is employed in the Kodak office.

Finch's

211 NORTH 10TH STREET
BOISE, IDAHO 83702
PHONE 345-5200

Texas Instruments slide rule calculator SR-50



THE FULL FUNCTION SLIDE RULE CALCULATOR

UNIQUE DATA PROCESSING SEQUENCE

VERSATILE ELECTRONIC MEMORY

TEXAS INSTRUMENTS
INCORPORATED

\$149.95

NOW AVAILABLE
Limited Quantity



Craters of the Moon probed by seven western universities

Geologists and students from several western universities probed Idaho's Craters of the Moon National Monument area last week as the climax to a two-state field tour.

The occasion was the Fourth Annual Western Intercollegiate Geologic Field Conference. Led by Boise State University geologist Monte Wilson, fourteen BSU geology students joined the tour. Kirk Vincent is BSU's student representative for conference planning.

"It was the first time BSU geology students have taken a role

in the conference," said Wilson. In 1976, he notes, Boise State will be host school for the major geology session, next year it will be in the Grand Junction, Colorado area.

For the 120 students from schools in Utah, Colorado, and Idaho, the conference offered examination of geologic records left by ancient Lake Bonneville and the vast Snake River plain.

"While the students were getting field trip experience, they also get an unusual chance to meet and exchange ideas with the student and faculty geologists of western universities," says Wilson.



BSU Geology student Jeff Wilson [sunglasses] and a woman geology student from Colorado look at a small volcano in Craters of the Moon National Monument. Students in background are from BSU, BYU, and Utah State.

BSU Public Relation office in trouble

The public relations office at Boise State is in trouble. Working without a budget since the inception of the office last May, someone must now come forth with proper funding for the office.

The office is presently without funding and is off the scholarship fund. They are operating from money allocated to them from the administrative ledger.

It was suggested by Kit Christensen, ASBSU President, that "At least \$1000 be allocated to

them from the \$20,000 excess Boise State now has."

With the importance now placed on the need for a decrease in the student-teacher ratio, new and improved facilities on campus and a need for an increase in the BSU appropriated fund, it's extremely important for the Public Relations Office to have the proper funding. They publicize the needs of Boise State to the public and are also one of the best offices on campus for promoting the school.

Geothermal energy of interest to BSU

Boise State University geologists are key figures in the growing chain of studies aimed at geothermal energy potentials for Idaho and the nation. So far this year, BSU Department of Geology Chairman Kenneth Hollenbaugh and his staff have interests in the geothermal possibilities beneath the surface of the Raft River basin, the Boise foothills, at the old penitentiary site east of the city of Boise, and various regions throughout the Western U. S.

Their work has, in the most part, been funded by a series of grants from the Atomic Energy Commission and the Idaho Nuclear Energy Commission. The two agencies have made approximately \$40,000 available to fund the various geothermal studies here.

If the BSU team wins approval for two additional geothermal projects they have in mind, another \$300,000 worth of research work could be started soon.

Dr. Hollenbaugh and Dr. Clayton Nichols kept their department's hand firmly into the growing geothermal search race as key participants in a national conference on the subject held at the California Institute of Technology this fall.

While there, the two talked about further project funding and national geothermal goals with officials of the AEC, the U. S. Geologic Survey Office, the National Science Foundation and California's Jet Propulsion Laboratories.

Currently, the main aim of the research is to develop a series of demonstration projects in Idaho and across the nation to show the potential of using lower temperature underground waters for energy sources.

One example is the "Boise Space Heating Project". Support for this research proposal is being sought from the National Science Foundation and the AEC.

If the project is funded, a study will be conducted to determine to what extent the natural hot water under Boise can be utilized to replace conventional energy sources for heating public buildings.

Another proposed geothermal study would look into hot water energy potential of the Weiser-Crane creek geothermal zone of Washington County, Idaho.

That project would involve BSU, University of Idaho, Idaho Bureau of Mines and the U. S. Bureau of Mines on a total project to cost an estimated \$189,000.

The BSU geology team has also taken on a series of geothermal workshops in Idaho to add geothermal knowledge to others in the state on an extension course basis.

Recently, BSU teachers were key figures in a short course on the subject offered in Idaho Falls. Dr. Nichols led a workshop in geothermal systems at Yellowstone Park last summer.

AARP sponsors a "Crime Prevention program" for Boise

A "CRIME PREVENTION PROGRAM" is being sponsored by Boise Chapter 325 of the American Association of Retired Persons (AARP), as a public service to the people of the entire community, with the assistance of members of the Local Law Enforcement Office, the Ada County Sheriff's Department, and members of the Student Body of Boise State University. Also with the aid of Mr. George Smith on the projector.

The entire program originated with the National Office of AARP. NRTA and the film was made and narrated at their direction.

PLACE
Ft. Boise Community Center (just behind the Elk's Re-Hab Center), 700 Robbin Dr., (the drive just west of the Elk's building.)

DATES
1st Session. Monday, October 28. 1:00 to 3:00 PM, repeated 7:30 to 9:00 PM.

SUBJECT "STREET CRIME"
FILM "WALK WITHOUT FEAR"
Discussed by Lt. Richard Maus of the Boise Police Department.

DATE
2nd Session. Monday, November 4 1:00 to 3:00 PM, repeated 7:30 to 9:00 PM.

SUBJECT "BURGLARY"
FILM "INVITATION TO BURGLARY" Discussed by Chief "Bud" Sims of the Ada County Sheriff's Department.

DATE
3rd Session. Monday, November 18. 1:00 to 3:00 PM, repeated 7:30 to 9:00 PM.

SUBJECT "CRIMINAL FRAUD"
FILM "ON GUARD - BUNCO - FRAUD" Discussed by Lt. Maus and Resource persons.

DATE
4th Session. Monday, November 28. 1:00 to 3:00 PM, repeated 7:30 to 9:00 PM.

SUBJECT "COMMUNITY-POLICE RELATIONS"
FILM "EVERY HOUR, EVERY DAY" Discussed by resource persons from both the Boise Police Department and the Ada County Sheriff's Department.

PRICE
NO CHARGE All interested persons are invited and welcome. Come, celebrate the opening of your new Community Center.
PROGRAM CHAIRMAN. JEAN MOORE -- President, Boise Chapter AARP. 325

Student residential life office accepting applications for R.A.s

The office of Student Residential Life is accepting applications for the Resident Advisor Program. All applicants must have a cumulative GPA of 2.00 or above and be upperclassmen.

The Resident Advisors and Assistant Resident Advisors in each hall are responsible for the development of an effective hall unit. RA's

and ARA's have similar responsibilities and authority which include advising students, identifying individuals who may need special help with personal problems or study skills, referring students to various campus services, and assisting new students in their orientation to the campus. The staff also is responsible for implementing

University policies and procedures within the residence halls.

If you are interested in the program, like people, hard work, and enjoy helping others, please come to the office of Student Residential Life, Room 110, Administration Building and pick up an application.

BANNOCK STREET, BOISE
FRANKLIN ROAD, BOISE
WEST PARK PLAZA, CHEWING
KARCHER HALL, Nampa
DIACORBI SQUARE, SUN VALLEY
COUNTRY CLUB CENTER, IDAHO FALLS

Carroll's
...for girls who know
WHERE THEY'RE GOING

HOMECOMING DANCE '1974'

Saturday November 9 7pm Rodeway Inn

FREE TO BSU & PUBLIC

DRESS CASUAL

LIQUOR WILL BE SERVED



music by: **Today's Reaction**



GET ORGANIZED!!!

SUNDAY	MONDAY	TUESDAY	WEDNESDAY	THURSDAY	FRIDAY	SATURDAY
					1	2
3	4	5	6	7	8	9
10	11 VETERAN'S DAY	12	13	14	15	16
17	18	19	20	21	22	23
24	25	26	27	28 "THANKSGIVING"	29	30

Look out committee cites free beer & entertainment

Free beer, Yannoula the belly dancer, Hot Steamers and the Steamettes and just general craziness are going to be the highlights of the Blitz Extravaganza November 8 at the American Legion.

The Extravaganza is a Homecoming event sponsored by the Look Out Committee. Nick Casner, member of the committee, said six kegs of beer and a standby beer truck will be available for the crowd that attends. He also said

that admission will have to be limited to about 300.

Entertainment at the Extravaganza to quote Casner "Is going to be bizarre." Yannoula, of Dick and Joanie's Dance Studio, bills herself as a lascivious belly dancer. The Hot Steamers and Steamettes are self described as a six member band specializing in "vivacious comedy rock." Their recent hits include *Pig's Ears*, *Donaldo the Duck*, and *pickin'*

bananas. Taken from a press release of the group, Frank Zappa is quoted as saying, "Well I don't know about their music, but a hot steamer is better than a cold one any day of the week."

In view of the events scheduled for the Blitz Extravaganza, Nick Casner urges all BSU students to attend. Casner also wishes to extend his thanks to Blitz Beer, Dick and Joanie's Dance Studio and the Cub Tavern.

Music department announces staff-student concert series

The Music Department of Boise State University has announced that the two concert series initiated last year will be continued again in the 1974-75 season.

The "Student Ensemble Series" began on October 20 and includes the following performances:

- Oct. 20 - Duo-Piano Ensemble
- Oct. 27 - Jazz Ensemble and Meistersingers
- Nov. 8 - Orchestra
- Nov. 17 - Percussion Ensemble
- Nov. 21 - Brass Ensemble
- Dec. 8 - Meistersingers & University Singers
- Dec. 15 - Wind Ensemble
- Feb. 27 - Chorale
- Mar. 16 - Wind Ensemble

- Apr. 20 - Concert Band & University Singers
- Apr. 22 - Brass Ensemble
- Apr. 27 - Orchestra
- Apr. 29 - Percussion Ensemble
- May 4 - Wind Ensemble & Meistersingers

The "Faculty Recital Series" began September 20 and includes the following performances:

- Nov. 1 - James Hopper, Clarinet
- J. Wallis Bratt, Cello
- Nov. 15 - Faculty Ensembles
- Jan. 17 - William Taylor, Baritone
- Wilber Elliott, Tenor
- Catherine Elliott, Mezzo-soprano
- Feb. 21 - John Baldwin, Percussion
- Sara Blood, Piano

- Mar. 21 - Carroll Meyer, Piano
- John H. Best, Cello

Tickets for the Student Ensemble Series are : \$10.00 for a season ticket, and \$1.50 for individual admissions. Tickets for the Faculty Recital Series are: \$6.00 for a season ticket and \$1.50 for individual admissions. BSU students are admitted free upon presentation of their photo-ID card.

All proceeds from both concert series are contributed to the Music Department Scholarship Fund.



Yannoula displaying her main trademark for BSU photographer.

Curtains to open for "A Thurber Carnival"

"A Thurber Carnival", the bright and witty comedy by James Thurber is cast and in rehearsal on the Subal Theatre stage. This sparkling revue, directed by Dr. Robert Ericson and assisted by Jan Lythgoe, will be presented at the American College Theatre Festival and will open at the Subal Theatre December 5.

This show, the second of the BSU Theatre Department's season, features five actresses, four actors and one pianist in a number of brief comic sketches. The dry Thurberesque humor, famous for placing quite normally abnormal characters in life's commonly uncommon situations, is amply supplied in A Thurber Carnival and promises a delightful evening's entertainment.

Making their debut on the BSU stage are Janet Eskew, Lynn Godwitz and David Farnsworth. Becky Oakes, Jenny Sternling, Denice Zundel, Mike Hoffman, David Six and Joel Farmer are returning having appeared in several Subal Theatre productions including *The Trojan Women*.

As You Like It, and The Adding Machine.

Our Impressions of Love is not a gesture... It is an lapse in time... when two persons are has a chance to grow.

By Cindi Mudd

May We Present... MR. and MRS. STEVEN YATES



MOLENAAR'S HAS BEAUTIFUL RINGS FOR BEAUTIFUL PEOPLE! Shop where terms are convenient, atmosphere pleasant and your patronage appreciated...

"THE DREAM COME TRUE STORE"

Molenaar's Jewelers

1207 BROADWAY FRANKLIN SHOPPING CENTER COLLISTER SHOPPING CENTER



"The Bat" proves to be a brain teasing, rather than a hair teasing experience for many audience members.

Fantastic evening by BLT

The Boise Little Theater provided another fantastic evening's entertainment with their second production of the season *The Bat*. The back drop for this brain teasing mystery, sprinkled liberally with situation comedy, is the living room of Miss Van Gorder's home circa 1920.

The plot is rather difficult to fathom from the dialogue of the play but it seems to revolve around the disappearance of a considerable sum of money from a local bank and the attempts of several interested parties to discover it's whereabouts. The plot is further thickened by the addition of the "Bat" whose main penchant in life, besides trying to collect the money, is eliminating possible finders by a form of forced population control. One of his early unwilling victims, the banker who experienced the theft, was found in the latter part of the play becoming plant food in a trunk.

The play is directed by Don Hawkins who also doubles as one of the leading characters. To pick an outstanding performer in this

production would be impossible because all were excellent.

The Bat will be playing tonight through Saturday and definitely provides an evening of top notch entertainment. Upcoming productions that are "must-sees" on your calendar are "Jack and the Beanstalk", a children's show opening November 29 and *The Curious Savage* opening January 3.

We Want You To Join Our Church
As An
Ordained Minister
And Have The Rank Of
Doctor of Divinity

We are a non structured faith, undenominational, with no traditional doctrine or dogma. Our fast growing church is actively seeking new ministers who believe what we believe. All men are entitled to their own convictions. To seek truth their own way, whatever it may be, no questions asked. As a minister of the church, you may:

1. Start your own church and apply for an exemption from property and other taxes.
2. Perform marriages, baptisms, funerals and all other ministerial functions.
3. Enjoy reduced rates from some modes of transportation, some theaters, hotels, etc.
4. Seek draft exemption as one of our working missionaries. We will tell you how.

Enclose a free will donation for the Minister's credentials and license. We also issue Doctor of Divinity Degrees. We are State Chartered and your ordination is recognized in all 50 states and most foreign countries. FREE LIFE CHURCH-BOX 4038, HOLLYWOOD, FLORIDA 33021.

BRONCO HUT CHUGGING CONTEST

Thursday November 7 600pm

- CATEGORIES
- Men Boat Teams (5)
 - Women Boat Teams (5)
 - Men & Women Singles
 - Entry Fee
 - Boat Team \$2.50
 - Per Person \$.50

Sponsored by Sig Tau Gamma and Gamma Phi Beta
Good Luck

Audience went wild over Mac and Anne

by Jo Elliott Blakeslee

Washington State University has all the luck. October 26th saw two of the hottest recording artists in the U.S. today belt an audience of nearly 10,000 with their unique and warming sounds. It's hard to imagine that little ol' Pullman, Washington could pull off anything as neat as that, but they did it. And the audience went wild.

Friday night and 7 hours of driving put me in Moscow. When I left Boise, I had no idea if I would really get to meet them or not. I called The Big Cheese at the Coliseum, a one Mr. James Crow, and asked him if it would be possible for me to talk with Anne and Mac. He politely informed me the press conference was scheduled for 5 the following afternoon, and to come to the truck entrance. Truck entrance? I know we Idaho hies are sagebrush and sandblown hollwilliams, but the truck entrance....? Skip it. The dude at the truck entrance laid the news on me--no press conference till 8:30. But isn't the concert starting at 8? Yeah, you can talk to Mac while Anne's singing. Will we get to talk to Anne? Don't know. After picking up my groans and curses from the pavement, I drove back to Moscow, then back to Pullman--fully an hour early. Into the truck entrance. Into the backstage Coliseum where their dressing rooms and the press conference room were waiting, like me and the 3 other reporters. I talked to some WSU students employed to keep riffraff and unauthorized humans out. How did I get in? Don't ask. In one of the rooms several trays of food sat waiting, too. I asked who the food was for. Someone answered, Anne Murray and her attendants. Isn't Mac gonna get to eat? Yeah, he and his boys went out. Oh. Can I look? Sure. So I walked around the room, mumbling into the recorder, potato salad, lime jello, buns, fried chicken.... One of the dudes outside the room said, "Hey, Larry, who's that weird chick in there?" "I don't know. She's from BSU" as if that fully explained it.

After about half an hour Anne and her road manager appeared from the truck entrance. And

pretty soon a gob of musicians came, too. And they all slipped into her dressing room. Rehearsal time. I was just starting to rock back and forth really getting into her muffled songs when Mac strolled by. Larry The Guard said, "Some guy is looking for you, Mac." "Who?" "I don't know, just some guy." "Did he look like this?" upon which Davis hunched over in a Quasimoto stance, rolled his eyes, and stuck out his tongue. No answer.

Mac Davis walked into the conference room with all the confidence and ease of a benevolent king. He personally introduced himself to each of us, then propped his feet on a chair next to me and said, "This is undoubtedly the largest press conference I've ever been to." The ice broke and we talked with him for nearly half an hour. He's a Lubbock, Texan, who used to sing at high school puke-outs for a buck. He learned about music not from the church choir, which didn't teach him "much of nothin'", but from backwoods funky joints and frat parties. He's worked at everything from a ditchdigger and a bricklayer's assistance to a juvenile probation officer. He's dynamic and as downhome as molasses and apple pie. I think he's probably about as much in love with life as anyone could be. His songs reflect that.

I asked Mac if he would play at BSU again, and he said, "Sure I would." He also told us about the unfortunate experience he had here at the Rodeway Inn. As a favor to him, I'll relate the messy occurrence. He'd been on the road for over 20 days straight and was dog-tired. As a surprise gift to his road manager, Henry Newman, and to George Stevens, a comedian travelling with Mac, Davis rented the Governor's Suite and another suite at the Rodeway. When they got to the motel, the woman behind the front desk came up to Mac, surmising him and the other guys to be a band of hippies and addressed Davis, saying, "There will be no parties in this room." Mac said, "Well, I wouldn't worry about that if I were you, but what

are you telling me this for?" The reply, "I'm just telling you what I have been told, there will be no parties in this room." Mac questioned, "Give me an idea as to why you charge \$80 a day for a suite like that, and have a bar set-up in it and a poker table and seating for 25 people if you don't expect people to have some sort of a gathering there?" Again she said, "I'm just telling you what I have been told, there will be no parties in this suite." Mac--"Don't you tell me nothin'." He really got burned. Then the manager came over and asked what the problem was. Mac said, "I'll tell you the problem, the girl is telling me that I will not have a party in a suite that I'm paying money for, and I don't even want to have a party." The manager asked, "Well, who are you?" "I'm the man that's paying for the suite." "manager--" "I don't care who you are, if she says there'll be no parties, I'm backing her up, there'll be no parties." So Mac, really burned by now, said,

"Well, suppose I pull you over the counter and stomp the hell out of you just for the fun of it?" A bad scene followed. Mac's road manager kept trying to butt in. Finally Mac asked the guy, "Who are you?" He said, "I'm the general manager." Mac replied, "I'm going to report you to somebody." The dude said, "You can't report me, I'm the general manager." Mac steamed, "Are you Mr. RODEWAY? I will find somebody bigger than you!" When they left, Henry pointed to the manager and, stammering, chastised, "S-s-sir, y-y-y-you d-d-didn't h-h-handle th-that we-we-well at all."

Needless to say, BSU students in charge of handling the concert general arrangements were highly embarrassed. As Mac pointed out, in a few weeks.

The guy didn't show a lot of class. What's in Mac's future? All of his concert tours the past couple of years have been a means to an end -- obtaining a TV show. He will begin taping his own show for NBC in mid-November. He seems a little worried though, because the show is to be aired during the same time as The Waltons. Besides his show, he plans to continue recording. As a matter of fact, he

has a new album coming out in a few weeks.

At the end of the interview Mac told us he hoped we all enjoyed the show. I went into the Coliseum, grabbed an empty chair, and caught the last few songs of Ann's performance. Then Mac came on and gave a really fine concert. Oh, I almost forgot to tell you that I'm not going to tell you about Anne ... until next week. Her story is long enough to merit a separate article. Till then, I think I'll go buy a Mac Davis album. I've said thank you, and he'll appreciate it.



Mac Davis relaxes at press conference.

BUDGET BONUS SPECIALS

AT **JB's** BIG BOY FAMILY RESTAURANT

BUY ONE SPAGHETTI DINNER ITALIAN STYLE

AND SECOND SPAGHETTI DINNER IS FREE

with coupon (one coupon per order) Good any time (No substitutions) Void after Dec. 4, 1974




Tender Spaghetti with a rich slowly simmered Italian Meat Sauce with warm French Bread and chilled Lettuce Salad with your choice of dressing.

For Restaurant use only

Sale Amount

Credit

Total

Date & Initials

BUY ONE BREAKFAST #2

AND SECOND BREAKFAST #2 IS FREE

(No substitutes — Void after Dec. 4, 1974) Good only Monday thru Thursday with coupon. One coupon per order.




Two eggs, any style, hash brown potatoes, French Toast, Syrup and Butter

For Restaurant use only

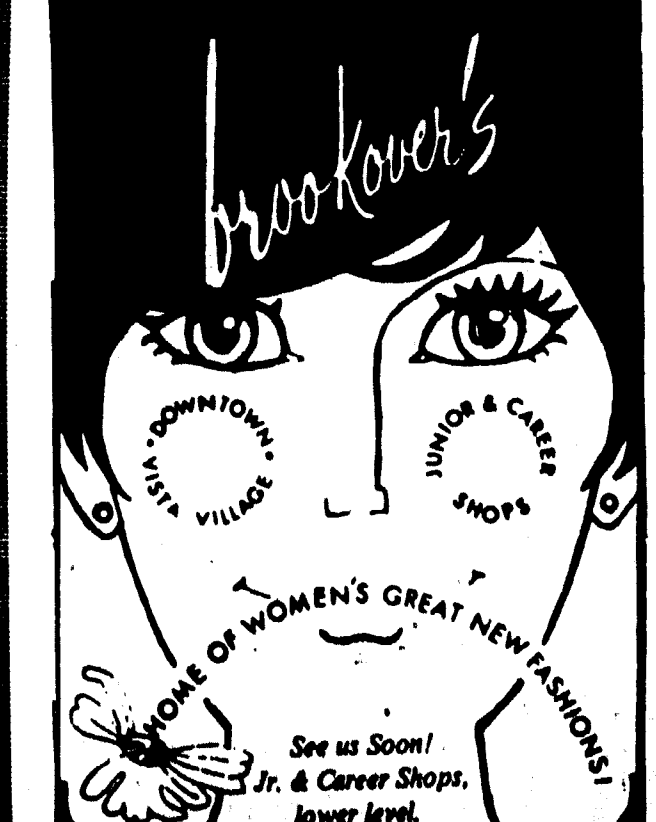
Sale Amount

Credit

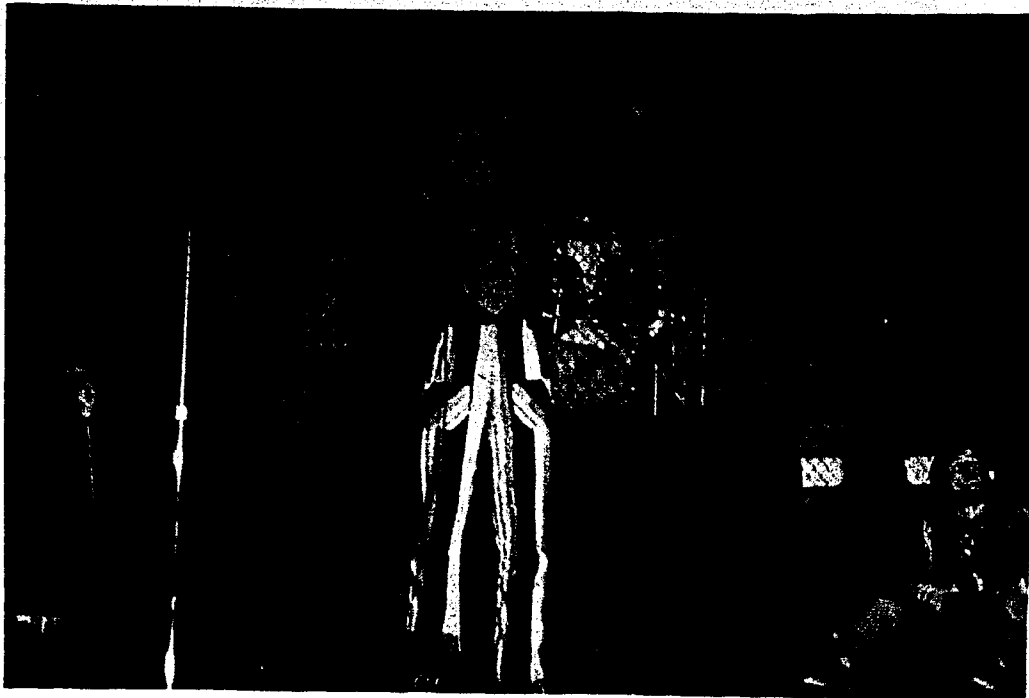
Total

Date & Initials

Brookover's



See us Soon!
Jr. & Career Shops,
lower level.



Godspell performers, Rick Harris and Bruce Staples, during Idaho State Penitentiary performance last Sunday.

High school produces top notch "Godspell"

by Pat Nance

A person's first exposure to high school musicals has a tendency to leave a sort of mediocre taste in one's cultural palate. That has never been the case with Highland High School of Pocatello's theatre group. This fact was proven again with the performance of GODSPELL that came to Boise last week.

Traveling from Pocatello, Ms. Joan Kisling and her troupers brought a theatrical experience not only to the audience that viewed the show's two performances at Boise High School but, also, to those lucky enough to attend St. Michael's Cathedral and those occupants of the Idaho State Penitentiary.

The Boise High School performance Saturday night left me, for the second time in my theatre experiences, quite frankly speechless. (The other time was after seeing Man of La Manche). The story of a group of friends in clown regalia gathered around one man, in the exuberance of joy and happiness turns into a celebration of love involving the audience as well as the actors. During the course of the story, the clownish group's tales take on the form of parables and it isn't until two-thirds of the way through the first act that the name "Jesus" was affixed to the man with the

Superman symbol on his chest.

The story is basically the gospel according to St. Matthew done with a new twist. Well, we all know how that story ends. Even so, the story of Christ's life and crucifixion has never left me feeling so utterly helpless and forlorn as it did Saturday night.

Sunday morning proved to be just as astounding. With the help of an Episcopalian priest in Pocatello, Ms. Kisling incorporated the songs and stories from GODSPELL into the regular church mass. The merging of the two formed a union of religion and theatre, that is quite indescribable, in a good way. (By the way, this combined service is the first time GODSPELL has ever, since its conception been incorporated into an organized church service.)

After church, it was a short bus ride to the site of the new Idaho State Penitentiary where the show was once again performed to an audience of inmates. The environment of the prison added a special meaning to the story of Christ's life and the inmates loved every minute of it.

The variety of conditions and stages did not affect the performers at all. Each performance adapted to each of the new surroundings as though it belonged there, which is rightly so, as this story belongs in a

person's mind, religious or otherwise, considering the content.

All of the performers are to be commended for an excellent job. Not one of them, be it musician, actor, or stage crew person was less in attitude, perseverance or performance than any other.

Words of gratitude and thanks cannot say enough to this band of players for bringing to Boise the experience and joy that came with their beautiful show during its short stay in Boise.

Staff member to solo for BSU concert

Opening its 38th season, the Boise State University Community Symphony will feature Catherine Elliott, mezzo-soprano, as soloist in its fall concert. The concert is scheduled for Friday, November 8 at 8:15 p.m. in the Music Auditorium.

The major work on the program is Beethoven's SYMPHONY NO. 8, with the first movement of the Brahms' SERENADE NO. 1 opening the program. Soloist Catherine Elliott will appear with the orchestra in two arias: "As When the Dove Laments Her Love" from the cantata ACIS AND GALATEA by Handel, and "Adieu, Forêts" from Tchaikovsky's JEANNE D'ARC. The closing selection will be Bartok's VILLAGE DANCE.

Mezzo-Soprano Catherine Elliott,

a member of the voice staff of the Music Department of BSU, has been a distinguished soloist in recital and oratorio both in Boise and numerous locations in Oregon and Washington. She previously taught at Pacific Lutheran College and the College of Puget Sound.

She holds a Bachelor of Music Degree from the University of Washington, and a Masters Degree from Boise State University.

Friday's concert is the third in the Music Department's "Student Ensemble Series" and will be conducted by John H. Best, who is starting his 28 year as musical director of the orchestra. Season or individual tickets may be secured at the door. All proceeds are contributed to the Music Department Scholarship Fund.

Baldwin - BSU music

BSU's Who's Who

Diane R. Ayres, Sr., Boise	Dewayne F. Mayer, Sr., Rupert
Noelia Baldazo, Jr., Caldwell	Shannon L. McDonald, Sr., Idaho Falls
Loretta J. Barton, Sr., Boise	James E. McMillan, Sr., Caldwell
Patrick Boyington, Jr., Boise	Jerry W. Nielsen, Sr., Boise
Nadja M. Brogdon, Jr., Boise	Dennis R. Parry, Sr., Nampa
Rachel A. Butts, Jr., Jacksonville, Florida	Wes L. Scrivner, Sr., Boise
Sheryl R. Duncan, Sr., Wendell	Carol Standley, Sr., Emmett
John W. Elliot, Sr., Boise	Susan M. Stutzman, Sr., Rupert
Thomas E. English, Sr., Post Falls	Maria A. Young, Sr., Boise
Vickey R. Hamby, Sr., Kimberly	

ACROSS FROM BRONCO STADIUM IT'S
SCHOOL HOURS
NOT BANKERS' HOURS
 MOTOR BANK FACILITIES OPEN

7:30 A.M. to 5:00 P.M.

Monday thru Thursday • 7:30 A.M. to 6:00 P.M. Friday

The Idaho First Broadway Office is oriented to serve the academic community. Students. Faculty. Administrative personnel. These new hours are designed to accommodate the Boise State class schedules. School hours . . . not bankers' hours.



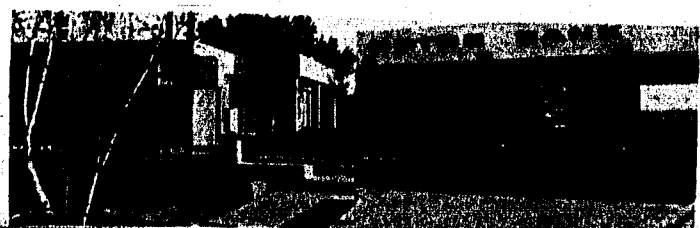
• Broadway Office • Phone 344-7931

The Bank

Annabel's
LOAVES

a genuine delicatessen in Annabel's cellar. Interesting sandwiches, salads, cheeses, wines, and beers for enjoyment at Annabel's or to take out. Prompt, informal self service. Visit us for lunch and dinner, or just stop by in the evening and quench your thirst.

342-2602 • 1302 VISTA AVE.



Aggie, Fans [?], and a Saturday kind of Love

by Tim Ritter

"With 34 lettermen back and a veteran returning at every position from a championship squad, they could have one of their greatest teams ever."

To the observant Boise State University football fan, the above quote would perfectly fit the pre-season outlook of the Broncos, right? It might fit, but it isn't concerning Boise State. The quote was in the Street and Smith official college football yearbook for 1974. The team being described was the University of Cal-Davis. The Aggies tied Chico State for the Far Western Conference title last year and are odds-on favorites to take it all this year. But right now, the Aggies are standing between Boise State and a post-season invitation to the division II playoffs. The Aggies will be in Boise Saturday afternoon, sporting a 7-0 record and a national small-college ranking. There should be little or no paper airplane throwing at Bronco Stadium once the game begins, at least not for a quarter or two. The Aggies should provide by far the stiffest competition at home this year for the Broncos, and barring a total collapse by Boise State, which is indeed improbable.

the homecoming crowd at Boise should be in for a great contest.

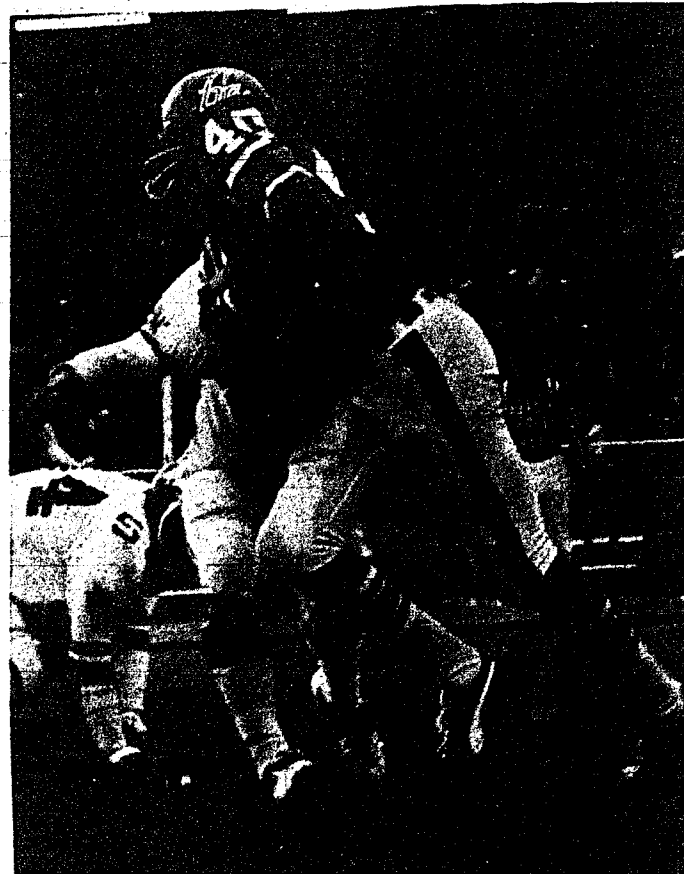
The Aggies are coached by Jim Sochor and have some outstanding people at the skill positions to throw at BSU. Cal-Davis quarterback Jim Speck passed the Broncos silly last year at Davis to regain the lead for the Aggies 32-26 with scant seconds remaining in the game before Boise's star quarterback Jim (we all know his last name) applied the cruncher by driving his team into the end zone with two seconds left to tie the game, and Rolly Woolsey booted the winning extra point to defeat the Aggies. Cal-Davis remembers well.

Perhaps the brightest spot of the entire Cal-Davis team is the defense, which sparked last week in a 14-7 win over Humboldt State. The defensive secondary picked off a total of 29 enemy passes last year, and expects to give Jim McMillan and his mini-recievers lots of trouble this week. The entire Aggie secondary returns from last year, plus the addition of ex-wide reciever Anthony Terry, who caught 9 touchdowns during last year's campaign.

The Broncos are accustomed to running up big scores at home, and the fans at Bronco Stadium are

accustomed to sleeping in the second half. The myth of the fan raised it's head last Saturday in the form of a scattering of ignorant boos when reserve quarterback Lee Huey failed to move the Broncos well enough to satisfy some fans(?) who wanted the final score against Weber State to be much higher than it was. The Broncos were in complete command at the time and the boos were surprising, to say the least. Go back to sleep, fans(?).

It's homecoming week on the BSU campus. The theme of homecoming '74 is U've Only Just Begun, and it applies to the Bronco football team. The Broncos have just begun to make waves nationally, compared to what they have yet to accomplish. The Aggies have a fine football team, make no mistake about that, but the Broncos should handle the Cal-Davis revenge motive, and come off the astro-turf Saturday afternoon a winner. Whether the fans get restless and boo, or whether they don't, they still live and die with a Bronco victory or defeat each week. For homecoming '74, one could even go sentimental and call every Boise State game a Saturday kind of Love. And if it ain't love - people, it still ain't too bad.



BSU running back John Smith moves downfield in Saturday's game with Weber State. Smith collected 104 yards rushing in the contest, which the Broncos won 42-14. [photo by Dustin Couey].

sports

Bumbling Bees get clipped

Brandt, Ohio (UPI) -- Memo to Woody Hayes: "Don't bother putting this western Ohio community on your recruiting map."

There are strong suspicions that Bethel local High School has the worst football team in the nation.

While unable to score a point through the first seven games, the Bethel "Bees" have given up 416. They've lost games by scores of 40-0, 53-0, 92-0, 89-0, 50-0, 56-0, and 36-0.

"We've been getting hurt," concedes Coach Dennis Reck, who insists he does not spell his last name "Wreck".

"Not only hurt physically, but hurt mentally," he adds. "The players are down because there's a big difference between just losing and really getting clobbered all the time."

Things easily could have been worse. Down 73-0 at halftime to Graham, the game was called after three minutes of third quarter and the Bees only got stung 89-0. Graham had scored everytime it had the ball.

Miami East probably would have beaten Bethel worse than 56-0 had it not started kicking field goals on first downs.

Against Covington, the Bees tried to get out of trouble by punting 11 times. They just got into deeper trouble. Five of the kicks were blocked and they averaged less than four yards a punt. That one wound up 92-0.

Although Bethel has an enrollment of 450, not many boys turned out for football and most of the 34 players are small.

For instance, one starting defensive back weighs 110 pounds and he tends to bounce off 190-pound charging fullbacks.

"We're small, but then we don't have any speed either," moans assistant principal Bill Johnston, a former coach. "We just don't have a football player.

"And no aggressiveness either," he adds. "They're nice kids, lovely kids -- the excuse me a pardon me type. But on the football field, you need tigers, real nail chawers. We don't have anyone who's going to get out there and bust some heads."

Since the last three losses have only been 50-0, 56-0, and 36-0, Reck has been asked if the Bees are getting better.

"No," he says, "I think lately most of our opponents have been pretty considerate. They're pulling their first string players pretty early. They just don't want to hurt us anymore."

The coach of Sidney Lehman, Bethel's opponent Friday night, says he "definitely will not run the score up."

"Of course," points out Robert Heil, "we've got to play hard the first part of the game to get a lead, but then I'll put in my freshman to try to keep the score down."

Reck realistically doesn't figure to score on either Sidney or Versailles the next week, but he says there may be a chance to break the ice in the final game November 8 against Riverside - a team more Bethel's size.

Somehow, the school's six cheerleaders and some fans have kept the faith and still turn out for games.

"I feel a lot of sympathy for the players because everyone treats them so badly," says cheerleader Kathy Antle. "But they try as hard as they can, so I stick up for them and try to cheer them on. It's a strange feeling out there sometimes, but I still care."

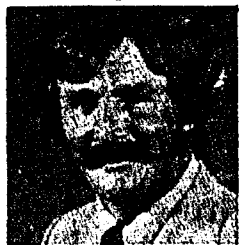
Bethel will field a team again next year, but apparently without Reck. He says he wants to stay on as a teacher but not as a coach.

"The idea of winning is a little bit overemphasized," says Reck, who teaches six math classes a day in addition to coaching the team.

"There are a lot of valuable things to be learned in football other than winning. I know that's hard to explain sometimes, especially at times like this.

"As for the people who ask me, how come you're so bad, I figure I don't have to say anything except, the boys are trying."

The BSU Intramural Department is sponsoring a 3-mile Cross-Country Run to be held Saturday, November 9. The meet is open to all Boise State students, faculty, and staff. The run is for men and women. Five teams are required, at least one member of each team must be a woman. The race will start at 10:00 a.m. in the Bronco Stadium parking lot. All entries must be submitted to the Intramural office by Friday, November 8.



Uncertain of your insurance needs?

For maximum protection you can start now, ask about our SENIOR STUDENT FINANCED PLAN...Call

LEE BLACKBURN
1134 N. Orchard 375-2023

SECURITY MUTUAL
LIFE
NEBRASKA

Harriers to compete against Weber State

Boise State's cross-country squad will be on the lookout for Weber State this Saturday, as the Broncos compete in the Big Sky Championships in Odgen, Utah. The Wildcats are last year's co-champions along with Boise, and both teams are favored this year. The meet begins at 11:00 a.m.

The Weber squad has the advantage of running on their home course, but the Broncos have three victories over their belts, including a win over Weber in Odgen. Other contenders include Northern Arizona, Montana, Idaho, and Idaho State.

Bronco coach Ed Jacoby is aware of the problems facing his team. "I expect it to be a great championship race in Odgen. For us to win,

we'll have to have our fourth and fifth men right in the thick of the fight."

Pacing the Bronco runners will be freshman Steve Collier, from Ontario, Oregon. Last Week, at the Utah State Invitational, Collier won the race with the time of 24:39, just eight seconds off the course record. He will be challenged by Weber State's Al Yardley, who was third in last year's meet.

The other BSU runners will be Jim Bonnell, Randy Teraberry, Glenn Lorenson, Dave Frickle, Dave Lockman, and Frank Willy. Bob Walker, who took the title for Boise last year, is listed as a doubtful entry in this year's competition. Walker was injured in BSU's first meet of the season and has not responded well to treatment.

COLLEGE STUDENTS GET FREE CHECKING ACCOUNTS



At Your Progressive



SERVING IDAHO WITH 32 OFFICES
AFFILIATED WITH WESTERN BANCORPORATION
MEMBER F.D.I.C. • MEMBER FEDERAL RESERVE SYSTEM
BANKAMERICA SERVICE CORPORATION 1965
SERVICE MARKS OWNED BY BANKAMERICA SERVICE CORPORATION
BANK OF IDAHO, N.A.

Broncos net tenth straight; to play Aggies Saturday

by Melinda Scharf

The Boise State Broncos will play the undefeated Cal Davis Aggies this Saturday in BSU's annual Homecoming game at Bronco Stadium. Game time is set for 1:30 p.m.

Last year, BSU pulled a 32-31 victory out of the fire in the last two seconds of the game when quarterback Jim McMillan hit Don Hutt for the touchdown that put the Broncos in the 1973 national playoffs.

Boise State is now 7-1 for the season and 4-0 in Big Sky play. Although Cal Davis is undefeated, they are ranked 15th in the UPI poll while BSU is third.

"Cal Davis will test us as probably no team has to date," said Bronco head coach Tony Knap. "The Aggies are very quick, aggressive, well-coached and smart winners. They have a lot of weapons on offense with big, strong, fast running backs, talented receivers and great quarterbacks."

"Their defense has great speed and quickness in their defensive secondary and on their front line. In addition, they have a great kicking game. In three games I have seen, no one has brought a kickoff beyond the 20-yard line against them and their punt unit is just as impressive."

Coach Knap added "They remind me of Louisiana Tech in their kicking game. We're going to have to get ready for a supreme effort because if we're not ready, we'll get beat."

The Aggies are averaging 353 yards a game in total offense while allowing their opponents 247 yards per game.

BSU's offense is currently the nation's best at 506.3 yards per game. The Bronco defense is holding its competitor to 269 yards a game.

Cal Davis sports two good quarterbacks in sophomore Jim Speck and junior Danny Carmazzi. Speck has completed 51 of 98 attempts for 620 yards and five touchdowns. Carmazzi, the top passer in the Far Western Conference, has completed 53 of 90 attempts for 719 yards and 12 scores. The Aggies' top rusher is fullback Tom Slater, who has carried the ball 72 times for 383 yards and two touchdowns. Their top receiver is running back Rick Hamilton, who has 18 receptions for 172 yards and three touchdowns. Split end Clark Anderson has 16 catches for 251 yards and one score.

In earlier action, Boise State got its tenth consecutive Big Sky Conference victory last Saturday when they defeated the Weber State Wildcats 42-14.

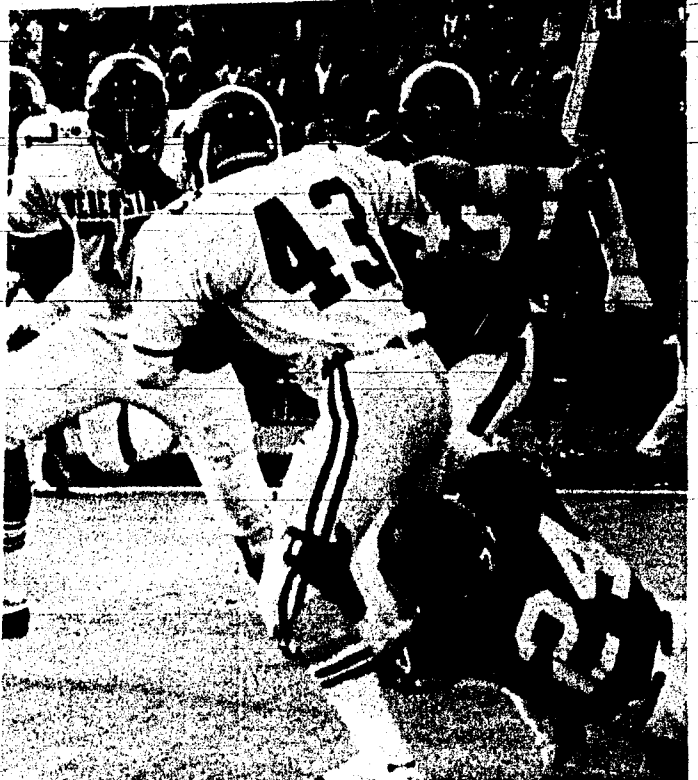
"We did a pretty good job against Weber State," Knap said. "I thought that Weber State's pass defense was a very strong part of their game. They also have some offensive weapons that impressed our players and coaching staff. They seem like a much better team than their record would indicate," Knap said of the Wildcats.

The Broncos built a 21-0 lead in the first half on a four-yard run by fullback Ken Johnson and another two from running back John Smith (a 36-yard run and a five-yard pass reception from McMillan). The Bronco defense held Weber State to 83 yards rushing and 51 passing in the first two periods while BSU collected 235 on the ground and 94 yards aerially.

All-American candidate McMillan had a memorable game, as he went over 5,000 yards passing in his four years at Boise State. McMillan threw 23 passes and completed 14 for 149 yards in the air. Teammates Lee Huey and Greg Stern added to the BSU passing total, Huey with three completions for eleven yards and Stern connecting one for 13 yards. Halfback Dave Nicley also had a shot at it with a 40-yard pass to wide receiver John Crabtree.

To add to the excitement of an otherwise routine rout, free safety Rolly Woolsey faked a punt and ran 27 yards for a Boise State first down in the first half, and then in the third quarter returned a Wildcat punt 76 yards for BSU's fifth TD of the game.

Defensively, middle linebacker Ron Davis led in tackles with nine, followed by Mike Campbell and Loren Schmidt with eight and Woolsey and Pete Poumele with six each. The BSU defense held WSC's Don Reddic, the Big Sky's fourth leading rusher to minus five yards rushing.



Bronco right cornerback Mike Campbell nails a Weber State ballcarrier in last Saturday's game while right linebacker Loren Schmidt moves in for the assist. BSU prevailed 42-14. (photo by Duatin Couey).

Nicley, Woolsey garner weekly BAA honors

Left halfback Dave Nicley and free safety Rolly Woolsey were selected Offensive and Defensive Players of the Week, respectively, at the BAA no-host luncheon Monday in the SUB Ballroom.

Nicley and Woolsey were chosen for their performances in last Saturday's game against Weber State.

Nicley, a 6-0, 185-pound senior from Colfax, Washington, rushed for 50 yards in nine carries and a touchdown against the Wildcats. He tallied 40 yards more when he

hit wide receiver John Crabtree on a halfback option pass. He was also outstanding in his blocking efforts.

Woolsey, a 6-1, 180-pound senior from Grand View, was the defensive standout in Saturday's win. He had four unassisted and two assisted tackles against the Weber State offense. Woolsey also ran back a punt for 76 yards and a touchdown. In addition, Woolsey ran up 27 more yards on a fake punt. This was Woolsey's second time receiving the honor—the first coming against Montana State.

LAE sponsors gun clinic

Lambda Alpha Epsilon (LAE)
Saturday November 17
9:00 a.m.

Administration building, front
Lambda Alpha Epsilon is putting on a pistol shooting clinic for Criminal Justice Administration students or any sociology, corrections and social work students who are involved in criminal justice

The idea is: members of LAE are invited to learn how to shoot pistols in a National Rifle Association "combat course". There will be shooting meets between members of LAE for trophies and to rank the shooters with regard to ability and skill.

Some of the teams we will be shooting against will be: The Boise Police Department, The Ada County Sheriffs Department, The Canyon County Sheriffs Department, The Idaho State Penitentiary Team, and The LAE Club, Washington State University.

Those who have the skill or would like to learn, you can contact Ted Hopferbock, Robert Taylor, advisors and criminal justice profs, or any LAE MEMBER.

For those who wish to join LAE, skill or no skill, the fraternity will provide NRA instructors for your benefit.

LAE is just starting to roll this semester and is branching out to promote interest and provide various programs and guest speakers in the Criminal Justice area. LAE is the largest fraternity of its type in this part of the United States.

LAE Meets on the first and fourth Monday of every month in the Student Senate Chambers between 1:40 and 2:40. Those interested, please feel free to attend.

The line ups

BRONCO TENTATIVE OFFENSE AGGIE TENTATIVE DEFENSE

- | | |
|------------------------------|--------------------------------|
| WR Mike Holton (152, Soph.) | LE Ric Rimmer (220, Sr.) |
| LT Carleton Ching (245, Sr.) | LT Charlie Merrill (220, Jr.) |
| LG Glenn Sparks (220 Jr.) | RT Dan Young (225, Jr.) |
| C Todd Whitman (218, Jr.) | RE Phil Wells (215, Sr.) |
| RG Jim Ryan (230, Jr.) | LLB Mike Jansen (200, Sr.) |
| RT Greg Palin (240, Sr.) | MLB Steve Bronzan (205, Sr.) |
| WR John Crabtree (155, Jr.) | RLB Rick Swoboda (192, Jr.) |
| QB Jim McMillan (175, Sr.) | LCB Anthony Terry (175, Jr.) |
| FB Ken Johnson (202, Sr.) | RCB Adam Williams (165, Sr.) |
| LHB Dave Nicley (195, Sr.) | SS Ron Rinehart (180, Jr.) |
| RHB John Smith (188, Jr.) | WS John Silverfoote (165, Jr.) |

AGGIE TENTATIVE OFFENSE BRONCO TENTATIVE DEFENSE

- | | |
|------------------------------|----------------------------------|
| TE Rick Fortner (187, Sr.) | LE Pete Poumele (230, Jr.) |
| LT John Bigwood (240, Jr.) | LT Ron Franklin (240, Jr.) |
| LG Bill Jenkins (256, Jr.) | RT Sala Misa (235, Jr.) |
| C Joe Lukawski (220, Sr.) | RE Mark Clegg (215, Sr.) |
| RG Steve Lard (220, Sr.) | LLB Gary Gorrell (215, Sr.) |
| RT Tim Thompson (240, Sr.) | MLB Ron Davis (235, Sr.) |
| FL Fred Pedersen (Jr.) | RLB Loren Schmidt (215, Sr.) |
| SE Clark Anderson (165, Jr.) | RCB Mike Campbell (187, Sr.) |
| QB James Speck (190, Soph.) | LCB Gary Rosolowich (177, Soph.) |
| RB Rick Hamilton (190, Jr.) | FS Rolly Woolsey (175, Sr.) |
| FB Tom Slater (190, Jr.) | SS Pat King (207, Sr.) |

This is just a reminder for all interested in joining the gymnastics club, whether you be male or female.....come to the gym either:

Monday or Friday

4:30 - 6:00

Saturday

10:00 a.m. to 1:00 p.m.

The only requirements are that you be a full-time or part-time student and have a desire to learn gymnastic skills. There is supervisory help at all time to assist you on any difficulties you might have, but it is primarily open workout.

CLIFF'S HOUSE OF HI FI

rock • jazz • classics

lp's • 45's

Finest Stereo Components

north 9th

MEN'S NATURE SHOES



DEXTER

\$26

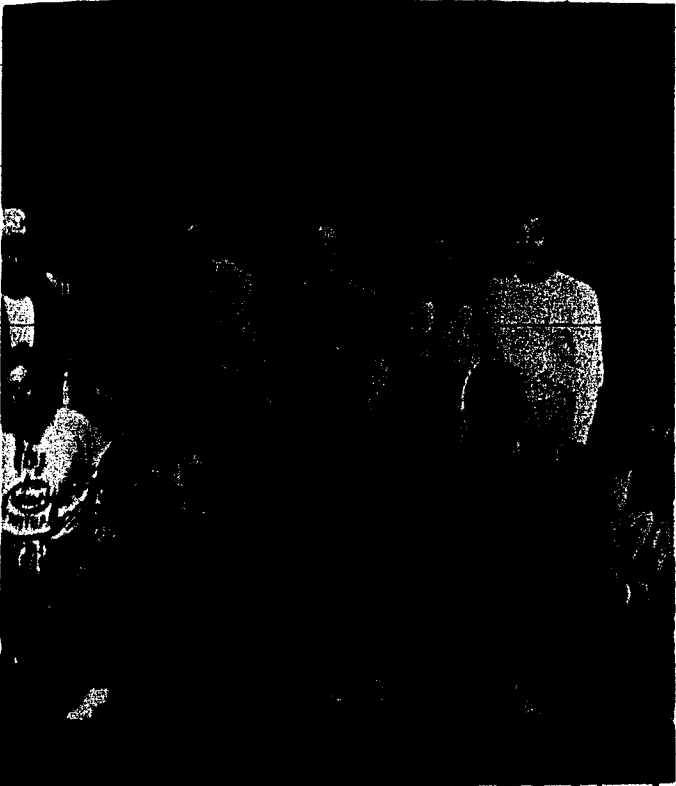
Dexter Puts EARTH In It's SHOES



\$28

Riley's

101 S. BANNOCK, BOISE



Pucker Hole Ten, newly crowned Intramural champs, display their trophy after Tuesday's game against Third and Long. Pucker Hole Ten won the game in sudden death overtime 20-14. (photo by Ray Stevens).

Ritter's forecasts:

Fall is here, the leaves are scattering, and so are a lot of teams' dreams of a conference football title. Montana took it on the chin last Saturday from Montana State, and now Boise State has a game-and-a-half lead in the Big Sky, with two left to go. BSU is not concerned about that this week however, for the Broncos entertain undefeated Cal-Davis Saturday and the loser of that one will almost certainly be dropped from playoff consideration. Last week, 19-5-1, all totaled 30-8-2, for a percentage of .750.

Montana 27 Idaho State 20
The Bengals have found themselves to a certain extent, but the Grizzlies are coming to Pocatello wounded by Montana State last Saturday, and Idaho State will be the raw meat the Silvertips need to recover.

Boise State 35 Cal-Davis 14
The Aggies will be trying to get even for last year's 33-32 defeat at Davis, but they picked the wrong time, the wrong place, and the wrong team to do it. BSU will play the rude host, and the 14,000-plus homecoming crowd at Bronco Stadium will love every minute of it.

Idaho 21 Weber State 16
I may be viewing this one with my

heart instead of my head, for the Vandals badly need a victory. Weber State is no patsy, but the time and setting is ripe for an Idaho victory.

Drake 35 Northern Arizona 17
This one won't be as close as the score would indicate. The Bulldogs will chase the Lumberjacks back to the rarified air of Flagstaff in a hurry.

The others:

- Army 19 Air Force 17
- Boston College 24 Tulane 13
- Auburn 40 Mississippi State 13
- Alabama 32 LSU 14
- Brigham Young 17 Arizona St. 16
- Arizona 29 Colorado State 21
- Colorado 24 Kansas 21
- Nebraska 23 Iowa State 12
- Indiana 28 Northwestern 24
- Oklahoma 28 Missouri 22
- Maryland 32 Villanova 14
- Navy 21 Citadel 15
- Penn St. 20 North Carolina St. 13
- Pittsburgh 36 Temple 30
- Stanford 14 USC 12
- Utah St. 16 Southern Mississippi 6
- UCLA 28 Oregon 8
- Texas A&M 28 SMU 14
- Texas Tech 34 Texas Christian 14
- Texas 28 Baylor 17
- Washington St. 17 Oregon St. 16
- Washington 24 California 16
- Michigan 27 Illinois 0

DATES

Learn Three Dates Of Persons with whom you will find an Uncommon Mutual Attraction; Mentally, Physically, and Spiritually.

In Order to get this information, send your Date, Place, and Time (if known) of Birth, Sex, A Self Addressed Stamped Envelope, and a Buck to:

DATES
105 S. 11th
BOISE 83705
[Allow 7-10 Days for Reply]



Women athletic trainers -- a change for the better?

The clock reads 2:30 p.m. on the wall of the Boise State University training room. A few Bronco football players walk into the room to get taped for the upcoming afternoon's practice. The trainer approaches a player as he sits on the taping table, AND THE PLAYER BECOMES A LITTLE UNEASY. Not because of what the trainer is going to do to him, but because the trainer is a girl.

A woman trainer in the hallowed halls of a men's football locker room? The answer is "yes".

With the rapid growth of woman's collegiate athletics, it has become necessary to develop women trainers and Boise State is taking a major step in that direction. The innovators in the project were Gary Craner, the BSU head trainer and Connie Thorngren, the BSU woman's athletic director.

"I think this a very big breakthrough for Boise State in the athletic field," commented Craner. "With the new law that Congress is considering, we are on our way in putting together a program that I think is essential to athletics."

The law under consideration states that all secondary schools must have certified trainers.

"Our program is to bring Physical Education majors and Science majors together. A program that I think is essential to athletics."

The law under consideration states that all secondary schools must have certified trainers.

"Our program is to bring Physical Education majors and Science majors together to create a program of sports medicine," Craner added.

The two girl trainers, who are certified trainees, are Lindi Jones and Carla Merrill, both from Boise. Both girls are very interested in sports and hope one day to coach in various sports.

"Ms. Thorngren talked to us at the beginning of the fall semester and asked if I would be interested in becoming a trainer for women's athletics," Carla Merrill commented. "I have always been interested in sports and I thought this might enhance my chances of becoming a coach if I were a certified trainer," she added.

"I was approached by Gary when I worked with him this summer at the South Junior High pool in Boise," Lindi Jones said. "I had the qualifications to get into the program so I jumped at the opportunity."

"I want to become a P.E. teacher and coach general sports and I felt this would be an excellent opportunity to learn something new about the field," she said.

Lindi and Carla were a little apprehensive at first. "I didn't know how the guys would feel

about a girl wrapping their ankles because it is a big responsibility making sure that they don't sprain their ankles and are out of action for a period of time," Carla said.

The girls have been learning the therapeutic aspects as well and have progressed faster than Craner had anticipated. "They seem to have picked up the taping skills quicker than the men and they seem to do a much neater job," Craner said.

"As of this moment there doesn't seem to be any resentment from the players and this is definitely a plus for the program," he said.

OUTDOOR CLUB

Saturday, Sunday & Monday
November 9, 10 & 11
Shoshone Area Lava Caves
Leave rear door SUB Game Room
9:00 A.M. Saturday
Saturday & Sunday
November 16 & 17
Ski Club Trip
TARGEE
Monday
November 18
K-2 Company Representative
Ski Maintenance
Last week in January
Winter Survival Training Course
by Bob Peacock
3 Credits - \$60.00
For more details contact
Mike Wentworth, club sponsor
SUB Game Room, 385-1456
Come to weekly meetings
Tuesdays, 5:30 P.M.
Sub Game Room

ANNUAL FUN BOWL WEEK NO. 9

1. UCLA VS Oregon
2. Washington St. VS Oregon St.
3. Weber St. VS Idaho
4. USC VS Stanford
5. Baylor VS Texas
6. North Carolina St. VS Penn St.
7. Missouri VS Oklahoma
8. Nebraska VS Iowa St.
9. Ohio St. VS Michigan St.
10. Colorado VS Kansas
11. Alabama VS LSU
12. Arizona VS Colorado St.
13. BYU VS Arizona St.
14. Michigan VS Illinois

19. Detroit VS Oakland
20. Pittsburgh VS Cincinnati
21. San Francisco VS Dallas
22. Washington VS Philadelphia

Trivia Question - Knap's Korner

Name the All Time All Pro Backfield (a quarterback flanker-back and three running-backs)!!!!!!

Last Week's Winners:
Dorm - Glen Matsui
Student at Large - Gary Walker
Faculty & Staff - Kathryn Beck

TAKE YOUR ANSWERS TO SUB DIRECTORS OFFICE

NAME _____
ADDRESS _____
PHONE NUMBER _____

PRIZES!!!!
\$5.00 Gift Certificate to the Overall Student Winner courtesy of Your Campus Store.
1 Free Game of Pool or 3 Lines of Bowling courtesy of GAMES AREA for ALL WINNERS!!!!!!!!!!!!

TIE BREAKER:
BSU _____ VS
U.C. DAVIS _____
[Predict Score]

16. Atlanta VS Los Angeles
17. Chicago VS Green Bay
18. Cleveland VS New England

B.S.U. Community Orchestra

Fri. Nov. 8 8:15 p.m. Music Auditorium



Beethoven : Symphony No. 8

Bartok : Village Dances

Brahms : Serenade No. 1 First Movement

Handel & Tchaikovsky Songs to be selected and sung by C. Elliott

Student Ensemble Series Faculty Recital Series

\$10.00 Season Ticket
\$1.50 Individual concert tickets
Held in the Music Auditorium unless otherwise indicated.

November 8
Orchestra Concert
8:15 p.m.

November 17
Percussion Ensemble
3:00 p.m.

November 21
Brass Ensemble
8:15 p.m.

December 8
Meistersingers & University Singers
8:15 p.m.

December 15
Wind Ensemble
8:15 p.m.

February 27
Chorale Concert
8:15 p.m.
Recital Hall

February 28
Chorale Concert
8:15 p.m.
Recital Hall

March 16

April 20
Concert Band
University Singers
8:15 p.m.

April 27
Brass Ensemble
8:15 p.m.

April 27
Orchestra
8:15

April 29
Percussion Ensemble
8:15 p.m.

May 4
Wind Ensemble
Meistersingers
8:15 p.m.

Note: BSU Students will be admitted free with photo ID cards.

\$6.00 Season Ticket
\$1.50 Individual concert tickets

Held in the Music Auditorium unless otherwise indicated

November 1
J. Hood, Clarinet
W. Pratt, Cello
8:15 p.m.
Recital Hall

November 15
Faculty Ensembles
8:15 p.m.

January 17
W. Taylor, Baritone
W. D. Elliott, Tenor
C. Elliott, Mezzo-soprano
8:15

February 21

J. Baldwin, Percussion
S. Blood, Piano
8:15 p.m.

March 21
C. Meyer, Piano
J. Best, Cello
8:15 p.m.

