

8-29-1974

Arbiter, August 29

Associated Students of Boise State University

Although this file was scanned from the highest-quality microfilm held by Boise State University, it reveals the limitations of the source microfilm. It is possible to perform a text search of much of this material; however, there are sections where the source microfilm was too faint or unreadable to allow for text scanning. For assistance with this collection of student newspapers, please contact Special Collections and Archives at archives@boisestate.edu.

BOISE STATE UNIVERSITY ARBITER
PRESENTS:

GIANT GALA REFERENCE ISSUE

AUGUST 29, 1974

ISSUE 1



Congestion and all its diagnostics

Parking has long been a problem on this campus. Though there are more pressing problems, such as building adequate facilities, attracting outstanding educators, and student housing, parking remains the major obstacle to peace and tranquility here at Boise State University.

There is in existence a most unattractive reality that all commuters must face, the parking ticket. When a driver parks illegally, disregards the use of decals, or drives where he should not be driving, he is given one of those little epistles from the Office of Buildings and Grounds. Annoying as it sounds, that is just what happens.

Many of the people ticketed feel that they have been unjustly treated, or that this minor annoyance does not warrant any consideration whatsoever. Ergo, they simply ignore that little piece of paper until they are reminded by a semi-ugly letter from the folks whose job it is to let them know they have erred.

Most of the ignore-ants feel that they should have certain rights and privileges, and among these rights is the right to park wherever they please.

Because of the lack of response from students who have received these notifications of wrong-doing, it has come to my attention that drastic measures are being considered...measures that I do not approve of; however, they did not ask my opinion. There are rumors circulating that the parking situation on this campus may be turned over to the city of Boise.

Well, my friends, need I say more? We all know the effective means by which the city of Boise has dealt with their parking problem. If we are invaded by our friends in blue, we can be assured of many useless hours spent in magistrate's court being fined over and over again for a stupid parking violation.

Consider the cause and effects of our passed actions, I say "our" because I am as guilty as the next person...as a matter of fact, I owe this school \$9.00 in past parking violations.



Dr. John Barnes

Dr. Barnes welcomes students to Boise State

On behalf of the administration and faculty and all of the support personnel who serve students, such as the Student Personnel staff, the Librarians and Counselors, we welcome you to Boise State University.

This is a time when everyone is concerned about their human rights and their individual charters in the democracy. Don't forget one of those important human rights which has not been legislated: the right to learn. This university and

others are supported by taxpaying citizens of the state and by hundreds of private citizens who believe in the philosophy that young America needs the right to learn. Apply your background, your skills, your motivations, and your young spirit to everything you do at Boise State. This will ensure not only your success in higher education, but it will enhance the enjoyment that you receive from the years you spend at the university.



President greets students, explains changes in policy

Before this article becomes involved in the happenings of the past summer vacation, may I extend a welcome to Boise State University freshmen and transfer students and say "welcome back" to BSU's returning students. I'm sure it would be safe to say that this summer seemed to pass too quickly.

Probably the first question that needs to be answered is, "why the \$3.00 increase in student fees?". This fee increase is for a new student insurance program offered through the Associated Student Body. Because of the many problems and complaints associated with last year's student insurance program, the ASB President's office compiled new specifications for a new insurance program. These specifications were unanimously endorsed by the ASB Senate.

In these specifications, we called for local claims service which should omit the problems of delayed payment we had with last year's policy. Also, we called for an on-campus representative to assist any student requiring help with his insurance claim(s). This representative, in my opinion, will play the most important part in this insurance program.

The representative from the insurer (Guaranteed Trust, Chicago) will be Tony Dello. Tony will operate out of the ASB offices on the second floor of the Student Union Building every afternoon from 2:30 - 5:00 PM. If these hours

are not convenient for you, I'm sure special arrangements can be made.

As you may well know, last year's insurance program experienced many problems with service. This is the primary reason for changing programs and directing it toward a service-oriented insurance program. I'm sure that if you need to use your insurance, you will find it easy to make a claim and get it taken care of quickly.

Another change made this summer concerns the legal advice service offered through Student

Services. The attorney firm of Green & Frost will represent the Associated Students this academic year. Mr. Green and Mr. Frost will have office hours Wednesday and Thursday from 1:00 PM to 4:30 PM in the office of Student Services. You must make appointments at the information desk for legal consultations.

Many things have happened within the Associated Student Body this past summer which I'll attempt to explain in the following editions of the Arbiter.

Kit Christensen



The Arbiter is published weekly by the Associated Students of Boise State University. The offices of the Arbiter are located on the second floor of the Student Union Building, Boise State University, 1910 College Blvd., Boise, Idaho, 83725.

Articles and letters to the editor must be received prior to 3:30 Monday the week before publication. All articles and letters to the editor must be typewritten and bear a legible signature.

- Editor John Elliott
- Business Man. Scott Harmon
- Ad. Manager Cathy Roper
- Lay-out Ed. Barb Bridwell
- Copy Reader Gwyn Harms
- Photogs Don Hay
- Chuck Jenkins
- Feat. Ed. Mark Stinson
- Reporters Travis Opdyke
- Kristi Kitchen
- Staff Asst. Cieta Klobucher
- Artist Grady Myers

Win some, lose some

Changes affect library

Changes in library circulation policies which go into effect on September 3 will be greeted as good news by some people and bad news by others. Most students will welcome the news that books will be checked out for one month allowing those who like to get an early start on term papers to be spared the inconvenience of renewing books so many times. Exceptions to this policy are books from the McNaughton collection, periodicals, and reserve materials.

A little known policy which has been in effect for some time is that there is a five-day grace period: Fines are not charged for books returned within five days after the due date. However, on the sixth day, the minimum fine of \$1.50 is assessed and the fine will accumulate at 25 cents per day up to the cost of the materials.

If you cannot locate a book on the shelves, the circulation staff will search for it. Holds can also be placed on books. A hold insures that you will be called when the book is returned and that the person who has it out cannot renew it. Any book can be recalled after two weeks if requested by another campus borrower or recalled immediately for reserve. If you

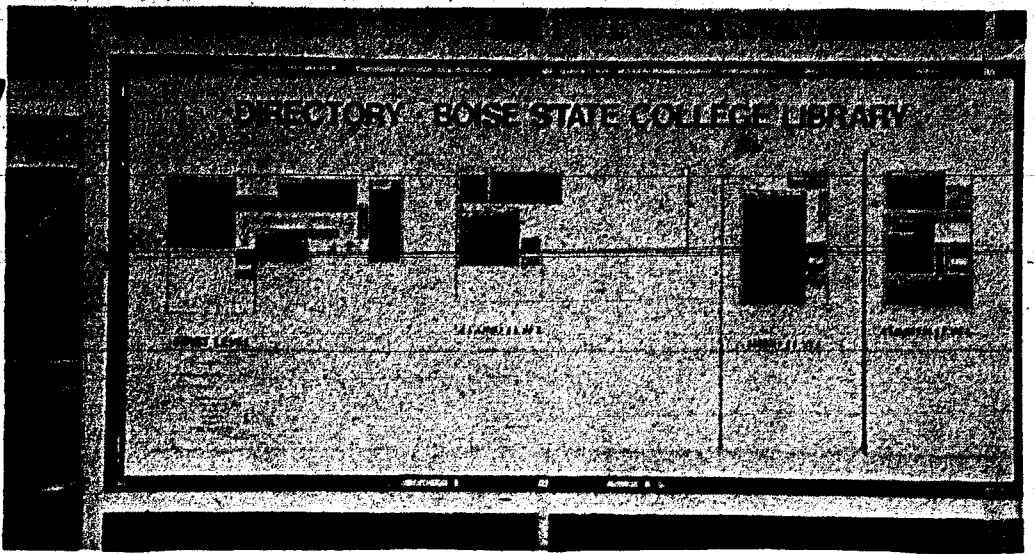
believe a book is lost, report it, and renew the book to allow time to locate it. Reporting a book lost will stop the fine from accumulating.

When a person checks out library materials he/she assumes a responsibility for those materials. The library will attempt to send two courtesy reminders of overdue materials, but failure to receive the notices does not relieve the borrower from responsibility for returning books on time or paying any charges incurred.

As usual, both the student photo I.D. card and the current activity card with student number will be required to check out materials as all circulation desks. This is not to hassle you but for your protection so that your name and student number cannot be forged by another person.

Books may be renewed once by telephone, and then must be brought in for a second renewal. The telephone number to call is 385-1204 for both general circulation and for reserve books.

The library exists to fulfill your information needs. We welcome suggestions or questions about the library. Please feel free to talk to any librarian or drop a note in the suggestion box.



Several changes have been made this year at the BSU library such as allowing month long checkouts and telephone renewals. Other policies remain in effect.

Special topics, regular listings add to Poli Sci

Five new courses will be added to the growing Political Science program at Boise State University. Three Special Topics courses and two regular listings are offered for the first time this fall.

"Students and Politics", a Special Topics class will be offered on two levels. There will be a class for lower division students which will serve as a prerequisite for upper division work. These two classes will examine student political activism in historical, international, and contemporary perspectives. The development of the student into a political person will be analyzed with respect to the sociological and psychological factors at work within his life. The nature of confrontation politics in the 1960s and the effects of student radicalism on the political system

will be highlighted.

"Intergovernmental Relations", is an informative course which examines the inter-unit cooperation and conflict in the American Federal System. Also included will be a study of state-local relationships and metropolitan dispersal and integration.

In conjunction with the department of Societal & Bureaucratic Structure" will be offered. The course is a socio-political analysis of the theories and concepts of complex social organizations, their application to public administration and the inter-relationship between political science and sociological organizational theory.

The Political Science department at Boise State University is located in Room LA 120A. It can also be reached by phoning 385-1457.

History department adds three classes to lineup

Boise State University's History department has announced the addition of three new classes this fall.

"Diplomatic History of Europe Since 1815", a Special Topics course, will deal with international relations from the Congress of Vienna to the present. The role of nationalism in the 19th century and the resulting breakdown of European peace in 1914 will be emphasized. Effects on the 20th century resulting from that breakdown will also be closely examined.

Another Special Topics course, "History of Southeast Asia" will be offered. The course will deal with the historical development of Southeast Asia from earliest times to the present. Emphasis will be placed on colonial and post-colonial periods.

Countries to be studied include Burma, Thailand, Malaysia, Indonesia, Laos, Vietnam, Cambodia, and the Phillipines.

An indepth survey into Islamic culture will be offered through a course entitled "Islamic Civilization".

Emphasis will be placed on the

political organization, philosophy, art, and religion of the culture from the birth of Mohammed through the 18th century.

Additional information can be obtained by contacting BSU's History Department, Room LA222, or by phoning 385-1255.

Natural Foods
Appealing to
All omnivores
Featuring
Our own
Stone ground breads
Organic vegetables
Delicious fish
&
Daily Specials

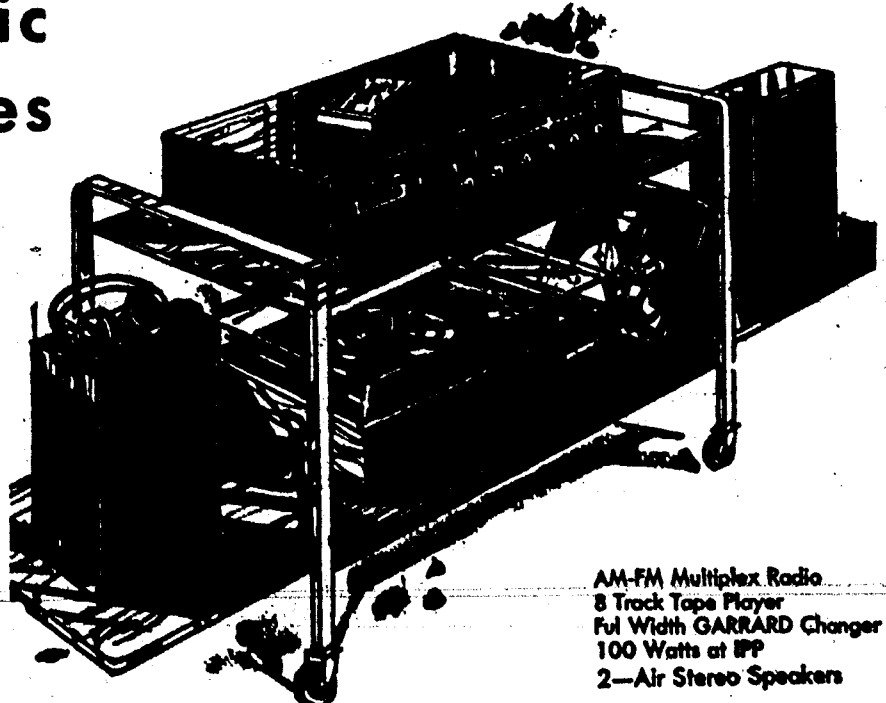
801 Park Blvd.
2 blocks
east of
M.K. building

Closed Sundays

Big Discounts On All Component Stereo

FREE Roll Around Decorator Stand

- Electroponic
- Curtis Mathes
- Miida
- Sony
- Sanyo
- Toshiba
- Electra
- Olympic



AM-FM Multiplex Radio
8 Track Tape Player
Full Width GARRARD Changer
100 Watts at 1PP
2-Air Stereo Speakers

only 129⁵⁰

HOURS: 10:00 to 8:00 Daily

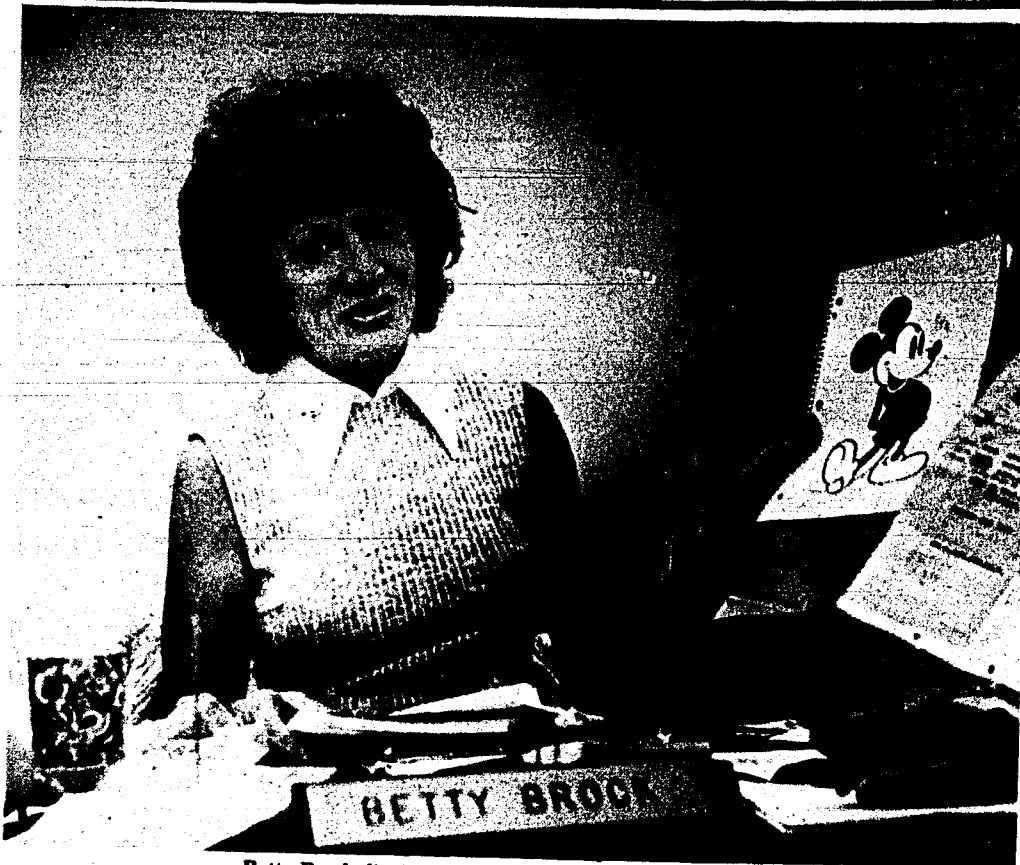
6898 Fairview Ave. Phone 376-1411

ACADEMIC RESEARCH LIBRARY

Thousands of Topics
\$2.75 per page
Send for your up-to-date, 178-page, mail order catalog of 5500 topics. Enclose \$1.00 to cover postage (1-2 days delivery time).

519 GLENROCK AVE.
SUITE #203
LOS ANGELES, CA. 90024

Our materials are sold for research purposes only



Betty Brock displays something for nostalgia buffs from the bookstore.



It's pretty rushed right before school starts.

Everything from alligator books to Zen is available at the 'Campus Store'

by Kristi Kitchen

The Boise State University Bookstore has gone through a myriad of changes since the end of spring semester 1974. The old place has a new name, a new manager and a changed philosophy. "Your Campus Store" exists primarily "to serve your every need", whatever your needs might be as a student, faculty or staff member.

The store is still located in the same place, off the first floor lobby of the Student Union Building. Eight to five will be operating hours except during registration days when extended hours are needed to serve the students pre-class needs. The store will be open from 8 AM to 9 PM, August 29 and 30; from 9 AM to 1 PM Saturday, August 31, and Saturdays, September 7 and 14. "Your Campus Store" will continue to observe 8 to 9 hours the first week of school, September 3 through 6 and the second week, September 9 through 13 with regular hours resuming on September 16.

The store will be carrying along with 3,420 required texts and 289 recommended titles, the usual school supplies, paper, pencils, pens, folders, staplers, and refillers for everything. Art and engineering students will find an entire section filled with the special equipment that these disciplines use.

Books carried are not restricted to just required and recommended types, general and specific reading of all kinds are carried in the store. The new manager, Betty Brock, is especially interested in the sort of books the Campus Store carries for the university community to build a permanent library from. Categorical divisions have been created to group together books that relate to the same subject. This "grouping" arrangement has resulted so far in a dozen sections. One of these, entitled "Liberation", concerns the women's and men's movements here and abroad. This section also includes titles dealing with the relationships between the sexes.

Next to this section, is another new feature on the vast subject of "Metaphysics" including books on astrology, graphology, eastern

religions, meditation, Tia Chi and similar disciplines with reading on psychic phenomenon in general.

Poetry follows with everything from Richard Brautigan to Walt Whitman. School of Business majors will be excited with the collection of books on industry, trade, commerce and corporation affairs. *Capitalism Today, America Inc., and Religion and the Rise of Capitalism* along with consumer interest titles are just a small example of what can be found there.

Ethnic studies, "How to..." and recreation will be found this year on the south wall. Recreation includes an enormous variety of books from bicycling to backpacking, to skiing, to sailing.

Any book not immediately available in the store can be special-ordered at a new "Service and special order" desk located approximately in the store center with only a 4-week wait or less. Also available for special order are diplomas of gratitude, plastic lamination of formal certificates and diplomas, the BSU rings, and Greek and other organizations' jewelry. Film and film processing will be taken care of there, also.

In recognition of the superior work of BSU's own campus departments, a new section has been established for student-created art, craft and literary work with another section for faculty authorships.

An extensive assortment of gift items and BSU embossed T-shirts are also being stocked in the Campus Store. Stationery, candles, BSU silk-screened mugs, cups, and steins, table study lamps, unusual greeting cards, binders and folders

More students are working in the Campus Store this year than ever before. In the previous year, only one student was usually employed (part-time) during the regular school year. Now, the number of students has risen to sixteen. Ms. Brock's thinking includes utilizing the experience of more students so the store will better serve other students.

Also, a suggestion-questionnaire is now in the front of the store to inform the store personnel of ideas, services and merchandise that customers would like to see materialize.

The changes in the Campus store are not over. Very soon, a money-order service will be available. And during the second or third week of September, an enormous sale will take place in the Campus Store with a large variety of useful and beautiful items priced to clear. The changes continue to occur daily, in response to the requests of those who use the store a great deal. If you have ideas, suggestions, criticisms or any other thoughts, Ms. Brock and her staff ask that they be informed so they may act "to serve your every need".

Curriculum enriched with 8 new English classes

The fall semester curriculum at Boise State University will be enriched with eight new classes offered by the English department.

"Women in Literature", will study recent fiction, poetry, and essays by or about women and will emphasize stereotypes and roles into which women are fitted and the problems created by those roles.

"Christianity in Literature" delves into central problems relating to the interaction of Christianity and literature. Reading include selections from the New Testament, St. Augustine, and Dante.

"Future Studies" is an attempt to investigate the method of "future studies" including science fiction, with intent to determine the implication these studies have for individuals.

A study of representative works of fiction, poetry, and drama written by Southern authors will be presented under the heading "Literature of the American South".

"Existential Experience in European Fiction" is a study of the existential experience and philo-

phy as manifested in the works of Dostoevsky, Laberqvist, Kafka, Camus, and Sartre.

"The Jazz Age and the Lost Generation" will offer a selection of the major works of the so-called "lost generation" whose most important writers gathered in Paris in the 1920s. Works will represent American, Irish, Canadian, and French literature of that age.

Attempting to achieve two objectives, "The Nature of Drama: Western and Japanese Views" will: (1) study the origin and evolution of drama - Western, particularly English, literature and Japanese literature; (2) examine different cultural attitudes toward drama.

"Freedom and Anarchy" is a new course offered under Humanities. The course is being funded through a national endowment and is to be team taught by instructors from the English, History, Philosophy, and Science department. The course will cover ideas regarding economic input and laws in relation to three contrasting periods - 1776, 1876, and 1976.

Elaine Powers Figure Salon

STUDENT SPECIAL FULL SEMESTER

Must Have
Full Time
Student
I.D. Card

@ only \$15⁰⁰ total

- unlimited visits
- women only
- 6 days per week

- free figure analysis
- professional assistance
- tailored program

CALL 375-9601 (NO OBLIGATION)
OPEN 9 to 9 weekdays — 9 to 4 Saturday
7580 FAIRVIEW — WESTGATE

Advertise
in the
Arbiter
Classified
385-3401

School of business welcomes seven new faculty members

A former head baseball coach, an avid mountain climber, and a lawyer are among the seven new faculty members being welcomed into Boise State University's School of Business this fall.

Patrick Shannon joins the BSU faculty as an assistant professor of accounting and data processing, after completing a graduate teaching fellowship at the University of Oregon in Introductory Business Statistics.

Shannon received his M.S. degree in management with emphasis on statistics, from the University of Montana where he served as head baseball coach at one time.

He is a Ph.D. candidate at the University of Oregon and expects to receive his doctorate in the near future. Shannon has also served as a consultant for Weychaeuser Lumber Company.

David Nix, as a hobby, has climbed 54 of Colorado's highest peaks. He will become an assistant professor of management and finance at BSU. Nix says he likes Boise's quick access to outdoor activities.

He comes to BSU from Oklahoma State University where he was working toward his Ph.D. degree and teaching business management. Nix has also served as an accountant-auditor with the U.S. General Accounting Office, participating in management audits in Washington D.C., Colorado, and Utah.

Nix is listed in "Who's Who Among Students in American

Colleges & Universities," is a member of Young Republicans, and served with the U.S. Army in Vietnam.

Dr. Anthony Bohner, an assistant professor of Finance and Management, comes to BSU from Willamette University where he was an instructor in public speaking and a forensic coach. He also is an attorney at law licensed in Idaho and Oregon.

Bohner has accumulated quite a number of honors and awards, including a place in the 1969 edition of "Who's Who Among Students in American Colleges & Universities." He served as a member and vice-president of Pi Kappa Delta, a national forensic honorary, and worked for a term as a news editor of "The Willamette Lawyer."

Dr. Robert Behling, assistant professor of accounting and data processing, comes to BSU from the University of Northern Colorado following a year's study toward his Ph.D. He was a member of Delta Pi Epsilon at UNC and an Insurance Institute of Northern Colorado scholar.

Behling is an alumnus of Boise State University, having attended 1969-72. He received his M.B.A. at BSU and was involved in a housing study while here.

Dr. Norman Gardner comes to BSU as an assistant professor of management and finance from the University of Utah where he taught Quantitative Analysis I and Management of Personal Finance. He received his M.B.A. from

Brigham Young University and has recently received his Ph.D.

Gardner has a wide background in business and finance, having served as a consultant to Intermountain Stock Exchange, Mike Farley Construction Company, and a vice-president-in-charge of operations for Weston Company, Inc., and Unity Securities, Inc., all of Utah.

Having taught at the University of Nebraska and, most recently, having served as an associate professor of accounting at the University of Wisconsin, Dr. Robert Koester will assume the title of associate professor of accounting and data processing at BSU.

Koester received his M.B.A. and Ph.D. from the University of Nebraska, has been a CPA since 1971, and is presently awaiting results on his Certified Management Accountant status.

Dr. C. M. [Mike] Merz brings to BSU a thorough background in business. Merz received his Ph.D. degree from the University of Southern California while he was a full-time lecturer in accounting.

He has also had experience in researching economic and financial impacts with several large companies including Shell Oil, Rockwell International, and Hughes Tool Company. He is also an accomplished author, having been a major contributor in five works relative to various business oriented subjects.

Dr. Merz will be an associate professor of accounting and data processing at BSU.



What is this girl doing? Find out at the Health Fair September 26 from 9:00 a.m. to 4:00 p.m. in the Boisean Lounge.

Health Service sponsors Fair September 26 9-4

Have you the courage to find out if you're healthy?

Come to the "Health Fair" Sept. 26 from 9:00 a.m.-4:00 p.m. in the Boisean Lounge, at the Student Union Building.

Here you can find out you're weight, height, whether you are enemy and you're blood pressure reading.

Can you go up a flight of stairs without huffing and puffing? Have you're lung capacity tested.

Are you too heavy or too thin? Find out how you can eat better for less money.

Ever wonder what goes on when an ASAP Patrolmen picks you up for a DWI (drunken driving)? Find out from one who knows.

Could you save a life with resuscitation? Come and see how Sussy Ann works.

VD-the bad word. Have you ever wondered if you have it, or if you're friends could pass it to you? Find out-signs and symptoms.

All of these questions and many more can be answered by people who know at the "Health Fair." Personal counseling will also be available.

This fair is sponsored by the Health Department. They are

interested in informing the students and the community how to stay healthy. Preventive measures are important in having good health.

Ten dollars of your tuition goes to the Health Department, a fee supported agency for full time students. It pays for salaries, equipment and supplies to maintain the department.

If you become ill, break a leg, or just feel in need of medical attention, go to the health building.

There is no charge for most medications or office calls.

However, if you want narcotics this is not the place to come. There is a charge for birth control pills, pre-marital blood tests and pap smears.

The staff consists of two doctors, two nurse practioners and two nurses.

Dr. Robert Mathias, head of the department stated "We can do almost anything a family physician can do."

Hours for the Health Department are Monday through Friday, from 9:00 a.m. to 4:00 p.m. If you feel in need of medical attention, don't hesitate. Go see someone who wants to help. You've paid for the service, so use it.

Urban studies sets four new class offerings

"Sociology of Health and Illness" is a study of the health care system, public, private, and voluntary. Considering such variables as age, sex, social class, ethnic background, behavior patterns, values and attitudes, a look is made at how illness is distributed in the population. Distribution of health resources with regard to manpower, service and facilities will also be studied.

"Economic Anthropology" is a study of the network of social relationships and cultural values inherent in the economic systems of primitive and peasant people. Emphasis is placed on production, consumption, distribution, and exchange in non-western societies.

An examination of the federal court system is made through a course entitled "Federal Court and Criminal Procedures". It includes

a study of district courts, courts of appeal, and Supreme courts.

A study of the "Juvenile Justice System" is an informative look into the multi-dimensional system designed to handle the juvenile offender: Police workings, juvenile

courts, and other segments of social control agencies affecting the delinquent.

Questions regarding the Department of Societal and Urban Studies should be directed to Room A211 or phone 385-3406.

Health Sciences offers degree

Beginning this fall at BSU, the School of Health Sciences is offering a new baccalaureate degree.

The bachelor of science degree in Health Science is an innovative program designed for students who would like to obtain an education in biological, physical, and health sciences to build a strong foundation should they desire to pursue additional professional or

graduate work.

The program is of particular interest to those students who are pursuing medical technology certification. It is also recommended for students in pre-medical, pre-dental, and pre-veterinary programs.

The Department of Health Sciences, Room H102, phone 385-1678, will be happy to answer any questions.

Boise State Veterans receive increases in benefits, loans, services

This year, the Boise State Veterans may be the recipients of some new benefits under Senate Bill 2784. An increase of benefits of up to 23 percent and change of entitlement from 36 to 45 months are two of the major provisions.

Further, the bill provides for up to \$2000 a year of direct Veterans Administration loans as well as several other benefit status changes. Action by the House and Senate may be completed by early

September. The Office of Veterans Affairs (OVA) on campus has consolidated all tutorial assistance in their office in Room 117. Also, all disabled veterans (Chapter 31) may take care of text authorization there. Both of these changes reflect the continuing process of streamlining Veterans Affairs at Boise State.

The Office of Veterans Affairs has increased available work study time to 1500 hours and eliminated both state sales tax and the ten-dollar expendable supply limit

for Chapter 31 Veterans.

Gary Bermeosolo told the Arbiters that this year, the Office of Veterans Affairs intends to personalize further their outreach and advertizing to reach all segments of the veterans community including 1400 eligible Chicano veterans.

More information for Veterans will be available in the Veterans Newsletter "Up Front" or by contacting the office in Room 117 in the Administration Building.

BSU hosts foreign students

BSU will host about 15 new foreign students this semester from such diverse countries as Kuwait, Korea, Nigeria, Venezuela, and Germany. Some of these students will find the alien American culture difficult and a little overwhelming. To ease this situation, the International Club is asking for volunteer BSU students to help, on

a one-to-one basis, with the cultural orientation. The BSU student would simply act as a guide, informant, and cultural liaison to the new foreign students, thereby assisting the cultural changeover on an individual level.

Interested students should leave a message for Alan LeBaron at the Student Body Offices.

Twelve new faculty members bring diverse backgrounds

The twelve new members of Boise State University's School of Arts and Sciences' faculty bring with them well-traveled and highly competitive backgrounds.

An avid outdoorsman, associate professor of mathematics, **Richard Ball**, has been a member of the U.S.A. bicycling team at the Olympic Games, Munich, Germany and at the Pan American Games in Cali, Columbia in 1971. He has been teaching for the past seven years at the University of Wisconsin.

Ball received his M.A. degree at Wisconsin in 1967 and is currently working on his Ph.D. He has also worked in programming at Argonne National Laboratories in Illinois, the National Reactor Testing Station in Idaho Falls, and at the Naval Weapons Research Laboratory, Dahlgren, Virginia.

Dr. Rolando Bonachea joins the BSU History department as an associate professor after three years of teaching at Georgetown University, Washington, D.C. Bonachea has experience with both the graduate and undergraduate level, emphasizing Latin American history.

He is a member of the Latin American Studies Association, National Academy of Arts and Sciences, Association of Rural Sociology, and the American Historical Association. Dr. Bonachea has also been a contributing editor to the Library of Congress Hispanic Foundation on the Caribbean area.

Having served as a graduate teaching assistant for over three years at Iowa State University, **James Long** joins the BSU faculty as a biology instructor. He is currently working toward his Ph.D.

Robert Marsh, associate professor of Societal & Urban Studies, comes to BSU from Sam Houston University where he received his M.A. in criminology and corrections. He too, is pursuing a Ph.D. Marsh has an extensive background in criminal and social work.

He has been honored as a Houston Foundation Fellow; served as Director of Criminal Justice Programs at Augustana and Sioux Falls colleges; and worked as a consultant at the South Dakota penitentiary.

To enhance his personal and professional knowledge, Marsh has

traveled extensively in Mexico, Western Europe, and South Africa.

A regional change and new challenges bring **Arnold Panitch**, associate professor of Societal & Urban Studies, to BSU. He comes from the University of Illinois after four years as a lecturer in sociologically-related subjects there.

Panitch received his Master's degree in social work from Wayne State University. He is a certified social worker in Illinois and a member of the Academy of Certified Social Workers.

Dr. John Robertson, associate professor of Foreign Languages, comes to BSU from Illinois State University where, for the past four years, he has taught French from beginning to graduate levels. A member of numerous language associations, Robertson received his Ph.D. in French from the University of Arizona. He has also had numerous works on foreign language published.

Dr. Henrietta Schoonover joins the BSU faculty as an associate professor of Foreign Languages after receiving her Ph.D. and serving as a teaching assistant at McGill University, Canada. She has also been an instructor at Goethe Institute and a teacher at Vanier College in Montreal.

Dr. Schoonover also taught English as a foreign language to elementary students in Germany. She is a member of the American Association of Teachers of German.

Dr. Leda Schrimsher is the new chairman of the Department of Home Economics. She brings to BSU years of experience in her field.

Dr. Schrimsher received her Home Economics doctorate from Ohio State University. She comes to BSU from Oregon State University where she was an associate professor of Home Economics. Also, she taught in Washington and Idaho. Her professional affiliations are numerous.

BSU's Music Department is fortunate in having **Daniel Stern** as its composer-in-residence. Stern comes to Boise as the new conductor of the city's Philharmonic Orchestra.

He received his Ph.D. from the University of Oregon in 1971 and has since been an associate

professor of music at New Mexico Highlands University. Well-experienced in orchestral instruction, Stern has taught music appreciation, conducting, history of music literature, and chamber music.

Marshall Sugiyama will join the BSU Math Department as an assistant professor. He received his M.S. in Math from Western Washington State College and is currently working on his doctorate. Sugiyama has been an instructor in all levels of high school, college, and university mathematics. For the past five years, he has been at Washington State University.

Larry West, associate professor of Theatre Arts, comes to BSU after completing a Graduate Teaching Fellowship at the University of Oregon. He received a Master of Fine Arts degree there and plans to begin work on his Ph.D. soon.

West brings to BSU an impressive background in theatre arts. He has served as one of four staff directors for Oregon's Carnival Theatre; organized the New Alhambra Theatre in Utah; and served as departmental stage manager at Weber State College. He is a member of the University and College Theatre Association, a division of the American Theatre Association.

A recent recipient of her Ph.D. in History of Art from Cornell University, **Dr. Susan Caldwell** will become an assistant professor of Art at BSU. She has a broad background in art history with emphasis on modern and medieval art and esthetics.

Dr. Caldwell has taught art at Cornell University, Johnson State College, Vermont, and Ithaca College, New York. She has been the recipient of three grants: Goldring Memorial Fellowship Travel Grant, Kress Foundation Fellowship, and Cornell Graduate School Tuition and Fees Fellowship.

Dr. Caldwell spent a year studying French literature and art history at the University of Montpellier, France. She managed to travel through France, Spain, England, and Ireland during that academic year.



Gayla Corbridge

BSU student enrolls in armed forces plan

Boise State University's first enrollee in its Armed Forces Cooperative Admission Program (AFCAP) is nineteen year old Gayla Corbridge of American Falls.

AFCAP is designed for young men and women entering the Armed Forces. Enlistees are provided individual counselor assistance in choosing a career and in maximizing educational opportunities while on active duty. After they've completed their military obligation, they are eligible for enrollment at BSU in all but limited enrollment programs.

Ms. Corbridge, a 1972 graduate of American Falls High School, is the daughter of Lee Corbridge, 265 Van Buren.

Her enlistment in the U.S. Army will begin September 3. Prior to

her enlistment, she had been enrolled at Idaho State University in its Licensed Practical Nursing program.

She has indicated her interest at BSU lies in the institution's four-year registered nursing baccalaureate program.

AFCAP offers enlistees such as Ms. Corbridge, substantial benefits through numerous types of assistance. Individuals already actively serving with U.S. Armed Forces are as eligible as those about to enlist.

Complete information on the program can be obtained by writing: Director of Admissions, Boise State University, 1910 College Blvd., Boise, Idaho 83725 or by contacting an Idaho U.S. Army recruiter.

Potato Growers donate \$1000 for scholarships

Boise State University has been notified by the Potato Growers of Idaho, Inc., that an agriculture scholarship in the amount of \$1000 per year for the next five years has been established.

The scholarship, in memory of Dr. Ben K. Humphrey, of Rupert, Idaho, is entitled the "Potato Growers of Idaho, Inc., Scholarship Fund"

The grant will be awarded to either one student at \$1000 per year for five years, or two students at \$500 per year for five years.

Students from Idaho's three universities will be considered for the scholarship. Applicants must

major in agriculture or agriculture related sciences and must be in their junior, senior, or postgraduate years.

Written applications, in the student's own words, should include sex, age, home residence, a transcript of credits, and professorial recommendations. The selection committee also requires evidence of good citizenship and the student's thoughts on goals and intentions following graduation.

Applications should be sent to: Potato Growers of Idaho, Inc., Executive Committee, P.O. Box 949, Blackfoot, Idaho 83221.

BSU department helps out smaller businesses

The School of Business at Boise State University will, for the second consecutive year, lend its expertise to small businesses throughout the Treasure Valley.

The Small Business Administration (SBA) has signed a contract with the school which will enable students of various academic backgrounds to lend their knowledge to businessmen in need of it. The program is also a practical lab experience for seniors and grad-

uate students, according to Dr. Charles Phillips, Chairman, Department of General Business. "Student business interns will be overseen by BSU faculty members", said Phillips.

The program allows both students and businesses to profit, thanks to the work relationship. It is just part of the overall ongoing service provided by the BSU School of Business to the business community throughout Idaho.

New insurance plan raises benefits, accrues advantages

This year's student health insurance program is being underwritten by Guarantee Trust Life Insurance Company of Chicago, Illinois. The plan is being administered by Capital Planning Services, Inc., a local Boise insurance brokerage. Mr. Tony Delio is the campus representative for Capital Planning Services.

The plan offers many advantages for the BSU student. Two of the many features of the program are particularly worthy of mention. The first is the Major Medical Expense Benefit, which was not offered under last year's plan. Under this benefit, the company will pay the first \$1000 in full and 80 percent of expenses actually incurred up to, but no exceeding

\$7500 for any one accident or sickness. In developing the specifications for the program, BSU felt that a student should have some sort of major medical coverage in the event of a prolonged sickness or hospital stay.

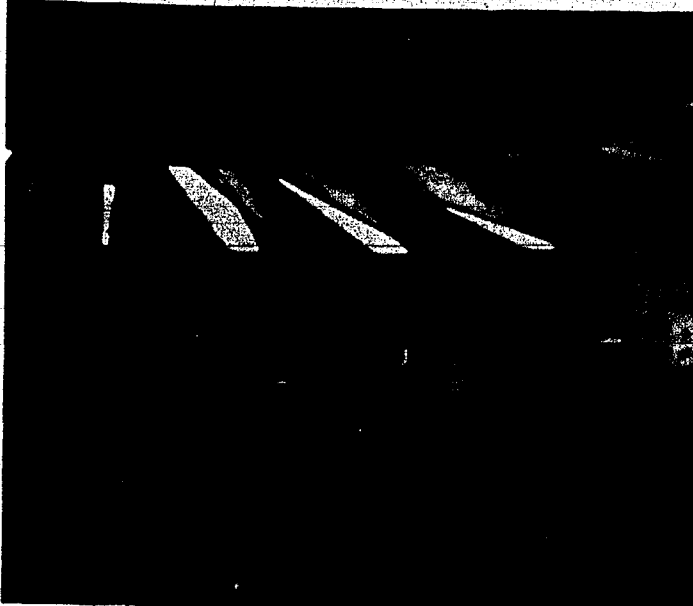
The second feature is the hospital room rate which will pay up to the hospital's semi-private room rate per day beginning with the first day. The previous program was limited to \$50 per day.

In addition to the list of benefits, which are covered in detail in the insurance brochures, all claims will be paid from capital planning services office which is located at 1661 Shoreline Drive, Suite 110 (Quinn Center across from K-Mart). This means that all

checks will be written right here in Boise, which will alleviate any harassing of students by hospitals or physicians who are waiting to be paid by an insurance company. This was a problem area with many students last year.

The campus representative, Mr. Delio, will be available through Friday from 2:30 until 5:00 in the ASB office at the Student Union Building. He will answer questions in regard to the program and the options available, also will assist in the filling out of claims forms.

In closing, it should be noted by the student that this plan will pay in addition to any existing insurance which he may already



The learning center in the vo-tech building houses technical material and adult basic education volumes.

Vo-tech receives grant

People with an interest in office repair can take advantage of openings now available in a Boise State University Vocational-Technical education program.

While popularity of vo-tech programs at BSU appears to be at an all-time high, according to vo-tech counselor Charles Quinowski, the office machine repair program is one of the few with openings remaining.

The two year program is being further upgraded this year, thanks to a grant from the National Science Foundation. Together with matching BSU funds, \$2,800 is

being used to purchase four oscilloscopes and eight voltage divider probes for the program. The new equipment will be used to trace circuits in electronic office machines.

The program is geared for work with the latest and most sophisticated office equipment on the market, including photocopy and duplicating equipment, electronic typewriters, and electric and manual calculators.

To sign up, contact BSU's vo-tech counseling office from 8 a.m. to 5 p.m. today or phone 385-1431. Fall semester begins Sept. 3.

Bookstore explains book charges

Many students wonder each semester about the cost of the textbooks that they must purchase for their classes. It might be of interest to know that the Campus Store loses 10 cents on each textbook that is sold. This information comes from a 1967 survey of the Textbook Publishing Industry and the Ernst and Ernst report of College Store Operation with updated material about on 1973 prices and not including higher Western states freight charges. The breakdown is as follows:

12.2 This goes to the author for his or her research, typing expenses, travel and other items connected with writing the book.
59.7 Publishers expenses:
5.5 Publishers services. Covers maintaining operating the storage shipping and handling. Also billing, accounting and financing to move books from the publisher to the college store and keep accurate records.

27.1 Publishers production and editorial expenses: Under this, making arrangements for the books to be written; edit manuscripts, procure illustrations, designing, making and proofing galleys and page proofs; making plates to print

pages; purchasing paper, printing delivering to the warehouse.

6.3 Publishers expenses: Covers employee welfare, rent, heating, lights, and salaries not included in other items.

13. Publishers sales and promotional expenses: Covers the salaries and expenses of people in the field plus complimentary copies sent to professors. Also includes printed material as: mailing pieces, catalogs, ads in professional journals.

7.8 To the publisher: Capital for author advances, reinvestment, market research, new product development, and 3 percent annum to stockholders.

30. College store expenses: 10 Goes to pay salaries of store personnel.

30 Store operating expenses: Includes the expenses required to maintain and operate an efficient store. Spans all costs of running the store from cost of physical facilities through accounting, record keeping transportation to and from publishers of textbooks and a myriad of other expenses.

08. Taxes which do not include sales tax.

-10 Total. This represents a 10-cent per book loss to the campus store.

Honors program offers six new classes, seminars, special topics

The Honors Program at Boise State University is constantly expanding its scope. This fall it will offer six new classes as well as several arranged seminars.

To aid advancement of accounting students who wish to pursue Certified Public Accountant status, three new classes are being offered. They are: "Principles of Accounting - AC 203-01 & AC 203-02", and "Intermediate Accounting - AC 303-03".

"Foundations of Education" is a new seminar course being offered for either 1 or 2 credits depending on fulfillment required. Funda-

mentally, the course is for the enrichment of those students interested in teaching. Within the seminar, students will have a choice of several topics with which to deal. Such topics as "Alternative School and Team Teaching", "Open Classrooms", and "Grading vs. Non-Grading", etc., will be covered.

Two Special Topics courses are also being offered Honors students. "Radical Economics" will explore and evaluate radical political economics - its past, analysis of the present, and vision of the future.

The other Special Topics course,

"Basic Library Skills" is geared toward incoming students who are not familiar with an academic or university library. Aimed specifically at the BSU Library, the course is an independent self-paced, self-directed study.

This fall, as before, there will be a general meeting of all students who have registered for an honors seminar at which time topics and scheduled times will be presented.

Honors program director, Dr. William Mech, Room 408-G, BSU Library, phone 385-1122, will be happy to answer questions or provide additional information.

Forensic students plan open house, events

An open house for all students interested in debate and individual events is being planned for Thursday, September 5, according to Mr. James DeMoux, forensic's coach. The event will be held in the Teton room of the SUB at 3:00 p.m.

This year's debate topic is Resolved: That the power of the

Presidency should be significantly curtailed.

Many events are also available in individuals. Oratory, extemporaneous speaking, impromptu, expository speaking, oral interpretation and many others.

The team will be attending tournaments in Washington, Cali-

fornia, Colorado, Montana, and Utah among others. Students who participate are eligible to join Pi Kappa Delta, a national forensic honorary. The next Pi Kappa Delta tournament will be held in late March in Philadelphia.

"We think we have a good program," DeMoux stated. "We have won the sweepstakes trophy at the Idaho Speech Conference three out of the last four years. At the last National Pi Kappa Delta tournament over 160 colleges and universities, many of them "name" schools were represented. Of that total, only ten schools were awarded superior in debate, Boise State was one of them.

For more information call 385-3328 or come by Room 117 of the administration building.

Senate lists activities, rules for coming year

During regular meetings of the Student Senate, the Senate will concern itself with two kinds of activities:

1. Receiving reports requiring no discussion or action.
2. Acting on recommendations or reports from committees or individuals.

Recommendations should be carefully prepared and distributed to the members of the Senate well in advance of the meeting. Senate business will be handled according to recognized parliamentary procedure.

If the proposals are properly prepared and the Senators have had time to consider them in advance, discussion tends to be pertinent and sensible.

The Student Senate meets on Tuesday of each week in the Senate Chambers. Groups or individuals requesting a position on the agenda must contact the Vice-President no

later than 12:00 Noon on the Friday preceding the regular meeting. Any topics brought up not on the agenda, by persons other than Senators, will be heard only with the consent of the Senate.

If topics or proposals are written poorly, or if misunderstandings cannot be cleared up in a reasonable amount of time, discussion topics should be tabled or placed in committee. The Student Senate should avoid doing "committee work" at its regular meetings in the interest of expediency and efficiency.

Many times the Senate receives a request for "input" or for the feeling of the Senate on an issue. These situations are difficult to handle by the Senate since each Senator has his own views on the question at hand. Questions of this sort could probably be better handled by a Senate committee or by an informal discussion after the meeting.

Minority affairs plans grant proposals, assistance programs

An expanded minority tutorial assistance program, a regular minority affairs newsletter, and increased grant proposals are only a few of the goals planned for this year by the Minority Affairs Board.

Maria Yang said that new students will be greeted with specific pamphlets at registration, explaining campus activities and events of interest to them.

Minority students will be on the floor at registration to answer questions and help solve specific problems of new students from different ethnic background.

In the past year, the Minority Affairs Board has accomplished the acquisition of an elevator for handicapped students in the Administration Building, student participation in the appointment of a new professor for the history department, and a significant

increase in new minority students.

The Minority Affairs Office in Room 117 of the Administration Building is looking toward some

Business seminar slated for September 16 at BSU

An informative seminar for individuals owning a business or planning to start one will be held September 14 on the Boise State University campus.

Featured will be Donald M. Dible, author of the best seller *Up Your Own Organization*. Dible has founded five successful businesses in the past three years.

Sponsored by the Center for Business Development and Research at the University of Idaho and the Center for Business and Economic Research at BSU, the seminar will cover the how and where of raising business capital,

Pop music offered

"Music - Pop and Rock" is an exciting new course being offered this fall through Boise State University's Music Department.

The course will take a look at various forms of "popular" music through an historic as well as social view. Authentic Folk Music, the Popular Tradition from the 1890's, the Jazz Era from the Blues through Modern, and Rock Phenomena from the 1950's are areas which will be studied. Analytical listening will be emphasized and an expansion of already familiar areas will be made.

badly needed office space and the establishment of a Women's Center this year to permit further increases in facilities and services.

Puppetry - all about it

"Cinema: History and Aesthetics" takes a look at motion pictures - its beginning and development. Emphasis is placed on the examination of the qualities peculiar to cinema that give it validity as a unique art form.

Theatre Arts is also offering a Special Topics course, for the first

time this fall, entitled "Puppetry". The course will be introductory to both the art and craft of puppetry, with the class involved in actual construction of puppets and creation of plays. Emphasis will be placed on the importance of puppetry as a stimulating tool to trigger the imagination and creativity of audiences of all ages.

On campus student willing to pay \$40 per month for a ride to and from work. Would entail approximately 6 miles a day at 3:30 p.m. and 12:00 midnight. Contact Tom Yrlondo, Morrison Hall, J-1.

CALENDAR

Thursday
 Aug. 29 8 AM Registration: seniors, Juniors, Sophomores and graduate students - Gym.
 8 AM VA check distribution - Aux. Gym.
 8 - 10 PM SIMS group meeting - SUB, Senate Chambers
Friday
 Aug. 30 8 AM Registration: Freshmen - Gym.
 7 - 9 PM Open registration - Gymnasium
 8 AM VA check distribution - Aux. Gym.
 9:30 - 12N Elementary student teaching orientation - SUB, Ballroom or Big Four

9:30-12N Elementary student teaching orientation - SUB, Ballroom or Big Four
 9:30-12N Elementary student teaching orientation - SUB, Ballroom or Big Four
Saturday
 Aug. 31 8 AM - 5 PM GED testing L219
8:30 - 12N Idaho Personnel Commission testing - B210, 212, 216, 217
 9 - 1 PM Idaho Dept. of Insurance testing - B207
Monday
 Sept. 3 Labor Day Holiday
Tuesday
 Sept. 3 6:45 - 8 PM Sorority rush activities - SUB, Nez Perce

Wednesday
 Sept. 4 6:45 - 8 PM Sorority rush activities - SUB, Nez Perce
 3:30 - 5:30 PM SUPB meeting - SUB, Teton
 6 - 8:30 PM SIMS club meeting - SUB, Senate Ch.
 7 - 10 PM Honors program orientation - B105

Friday
 Sept. 6 7:30 PM Foreign films: "Rocking Horse Winner" & "Below Zero" - LA106
Tuesday
 Sept. 10 Last day to register late except by petition. Last day to add new courses for credit or to change from audit to credit except with consent of instructor.

Committee sets lectures

Among the list of notables scheduled this year by the Lectures Committee are Alex Karras, Jack Anderson, David Steinburg, Vine Deloria and Elliott Richardson, according to Bob Hoppie, chairman of the committee.

The lectures are free to BSU students and students are seated

before the general public. Season tickets are available at a cost of \$10.00. The cost at the door is \$2.00. No more than 500 season tickets will be sold, Hoppie said.

Other members of the Lectures Committee are Dave Anderson, Becky Anderson, Bayard Lliterus, Dave Ward, Jan Lythgoe and Dave Frisinger.

Jack Anderson	8:00	Gymnasium	9-17-74
Elliott Richardson	8:00	Ballroom	9-27-74
Alex Karras	8:00	Ballroom	10-10-74
John Houseman	8:00	Ballroom	11-1-74
David Steinburg	8:00	Ballroom	11-4-74
Dr. Rollo May	8:00	Ballroom	12-8-74
Betty Freidan	8:00	Ballroom	2-5-75
Vine Deloria	8:00	Ballroom	3-5-75
Dr. John Galbraith	8:00	Gymnasium	4-27-75

Union still growing

The major objectives of the Student Union at Boise State University for the 1974-75 school year is to grow in quality by improving and expanding. We shall at all times strive to enhance and enrich the lives of as many students as possible, by offering a well-rounded program of productive and meaningful, as well as entertaining activities. A special effort shall be made to include a much larger percentage of individual students and student organizations within the various phases of the program.

Perhaps our major objective this year is to progress with the thought that with every physical expansion and every activity we will first search for quality and a touch that will have a lasting effect for our new university.



JESUS CHRIST SUPERSTAR

Magnificent film version of the incomparable rock opera. The motion picture is hip and reverent, contemporary and biblical, religious yet lay, traditional and iconoclastic. Ted Neeley is excellent as Jesus and Carl Anderson is a vibrant Judas. A stunning film. Radically different from the stage version and adds a completely new dimension and drive to the music.

Sept. 15 8:00 Ballroom
 Sponsored By Pop Films Committee

Pop concerts alive, well

The Pop Concerts is alive and well this fall and hopes to have the biggest year yet at Boise State University. We are currently looking to David Loggins, Mac Davis, Earl Scruggs, Jim Stafford and Roberta Flack. We would like as much student input as possible to find out exactly what kind of groups you want to see and hear this year. The Concert Committee is open to any student who is interested. Just stop in at the Programs Office in the second floor of the SUB and put in an application. Who knows, we may get Lawrence Welk.

Organizational mail boxes

Each recognized student organization has a campus mailbox in the Programs Office located on the second floor in the Student Union. Please pick up your mail regularly, as these mailboxes are small and your club may have some important mail.



Jack Anderson is just one of the many lecturers scheduled for the 1974-75 lecture schedule. Others include Elliott Richardson, Alex Karras, Betty Freidan and David Steinburg. The lecturers are free to BSU students.

Superstar heads Pop Films list for 1974

September 15-Jesus Christ Superstar
 September 22-The Life and Times of Judge Roy Bean
 October 13-Day of the Jackal
 October 31-Halloween Film Orgy: Including Tales from the Crypt, Phantom of the Opera, Count Yorga, Dracula has Risen from the Grave, Them, Cat and the Canary, Forbidden Planet
 November 3-Sometimes a Great Notion
 November 7-Homecoming Movies

(To be announced)
 November 17-Save the Tiger
 December 8-Classic Films (For Whom the Bell Tolls and From Here to Eternity)
 December 15-Sounder

Also, starting this year, we are beginning a program of experimental films. In this program, we will sponsor students who would like to make their own films. We will pay for the film, developing and possibly other things if they are financially reasonable.



JOHN MILLS
 VALERIE HOBSON
 JOHN HOWARD DAVIES
 IN

D. H. LAWRENCE'S

The Rocking Horse Winner

Made in 1950, before the movies had begun to tap D. H. Lawrence as a literary source, THE ROCKING HORSE WINNER was not so much an attempt to introduce Lawrence to movie audiences as it was a means of utilizing one of his more macabre stories at the tail end of a curious cycle of a largely supernatural thrillers, a cycle that had included HALFWAY HOUSE, CORRIDOR OF MIRRORS, and, most famous of all, DEAD OF NIGHT.

Audiences frankly were not ready for it; the Lawrence purists found it too much of a movie, the thriller aficionados found it too literate, and the star devotees were appalled to find their favorites performing in-out-of-character and often unsympathetic roles. Early audiences seemed not to understand it—although the fact that they were disturbed by it suggest they probably understood it more thoroughly than they believed. It is a disturbing film and thus has a whole new audience ready to discover one of the more startling and off-beat British films of the early 50's.

"Masterful"
 NEW YORK HERALD TRIBUNE

"Direction is sensitive, imaginative."
 SATURDAY REVIEW

"Ranks in excellence with THE FALLEN IDOL."
 NEW YORKER

September 7, 1974 LA 106 7:30 p.m. PLUS: Laurel and Hardy short: "Below Zero"



Go-eds BE SPECIAL BE A GREEK RUSH **RUSH right OVER and Go GREEK**

September 15-16-17 September 18-19-20

Go Greek, or so says the sign.

GREEKS AND OTHERS

TKE's sponsor 'Back to School' dance

The members of Tau Kappa Epsilon fraternity are starting off the fall semester, 1974, with their annual "Back to School" dance. The dance will be on Wednesday, September 4. Students can Boogie to Backwoods from 8:00 to 1:00. Beer will be served and Happy Hour will be from 8:00 to 9:00 PM.

The TKE's are actively working in campus affairs, such as IFC, college activities, and Homecoming. If you are interested in rushing TKE, please phone Gary Crowell at 375-5909.

Greek Rush

September 3

Alpha Kappa Psi

means business

Troy Bell, President, Theta Omicron Chapter of Alpha Kappa Psi, has expressed the following rewarding experiences which he has shared with his brothers in this organization: The opportunity to hear and meet outstanding leaders; A better chance to make friends with fellow students; Eligibility for 5 percent student loans and group medical insurance; participation in service projects; involvement in community activities; brotherhood and fellowship; a closer relationship with professors; valuable administrative experience.

To qualify for membership, you must be at least a second semester freshman with a 2.0 minimum grade point. Have a free cup of coffee on us in Room 315 in the School of Business. It will give you a chance to meet us and discuss the many other benefits of membership or contact Troy Bell, President, at 385-1167.

SIM's offers alternative

The promise of more energy, more creativity, better grades, less tension, increased peace of mind, and more successful interaction with others has caused students by the thousands to begin the practice of Transcendental Meditation, as taught by Maharishi Mahesh Yogi. Recent scientific research from diverse highly respected research institutes appears to support TM's claims. Student International Meditation Society of BSU is one of the hundreds of clubs established on virtually every college campus in the United States to promote understanding of the principles and practice of the technique of Transcendental Meditation.

SIMS has meetings the last Wednesday and Thursday of every month in the SUB Senate Chambers at 8:00 PM. They also have an office at 2013 College Boulevard, phone 345-1580. All students are invited to attend the meetings and learn more about the technique.



Greek Week climaxes a year of activity.

Don't forget Veterans

The Esquire Club is one of the oldest student organizations at Boise State University, having been organized in 1953. It has as its purpose the promotion of social gatherings, aiding returning veterans in any needed adjustments, and the furthering of good will throughout the community.

Membership is open to male and female veterans of the U.S. Armed Forces. Prospective members must have at least two years' active duty time and have been honorably discharged. Members of the Reserve must have completed active duty requirements and at least two years' service.

Club activities include the sponsorship of a Homecoming Queen candidate, softball and basketball teams, and the annual Esquire Club golf tournament for students and faculty. Additionally, the Esquires participate in the annual raft race and many social activities such as our fall and spring "Smokers" and Christmas party.

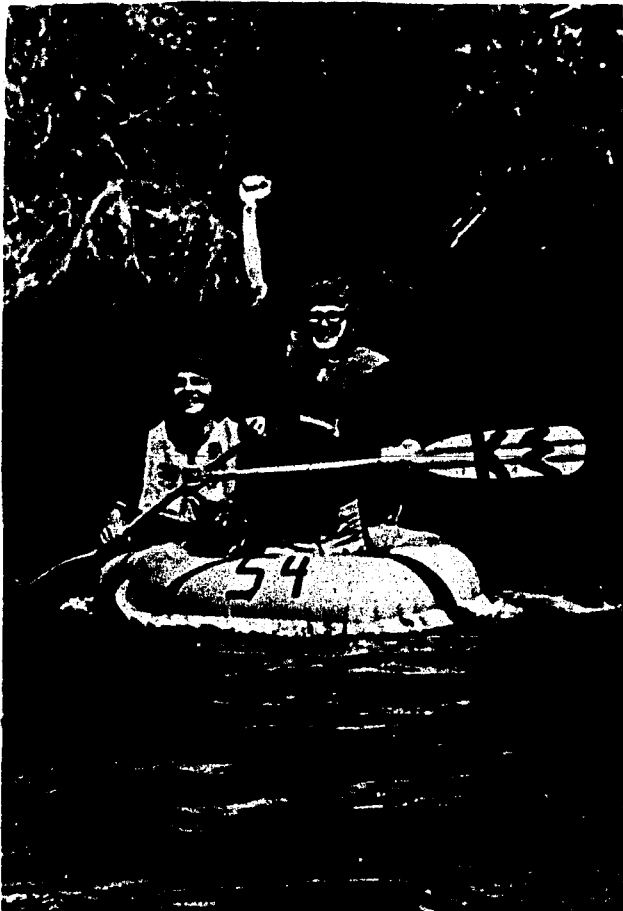
Club service projects have included: "Gold Dust", the BSU Mascot, the Fountain (opposite the library complex), and numerous others. In addition, the Esquire Club is active in the BSU scholarship program and as a sponsor of Vietnam Veterans Day.

Those interested in joining the Esquires may contact Gary Bermecoco BSU Veterans Affairs Office, 385-1679; Tom Thomason, 375-2025; Chuck Jaeger, 375-2663; Tom Litz, 344-3686, or any Esquire Club member. Welcome aboard.

Opportunity to Rush

Sorority rush will move into full swing next week when it officially begins on September 3 at 7:00 PM in the Nez Perce room of the Student Union Building. According to Christa Bax, assistant director of activities, there is more than a one-hundred percent

increase this year of the number of co-eds who will participate in the social activities over last year. The traditional rush activities are planned to give non-members a chance to look at each house and provide the sororities the opportunity to meet potential members.



KAPPA SIGMA wins the annual TKE raft race, one of the many events of Greek Week.

Boise State University fraternities will be having their interfraternity rush program starting Tuesday, September 3, 7:45 PM.

Rush is a period during which those students interested in belonging to a fraternity are given the opportunity to become acquainted with the members of fraternities and see their houses.

All BSU students are invited to attend. Meet in the Student Union Ballroom, second floor, Tuesday, September 3 - 7:45 PM.

You will be taken to all fraternity houses. There is no charge.

IK's serve Boise State

The Intercollegiate Knights at BSU are a service organization. Now that would turn some people off right there, but the club not only works hard, it plays hard too. Some of our activities include putting on dances, building projects for the school, and charitable work for the community. The I.K.'s are built around the ideals of King Arthur and the Knights of the Round Table. They are a national organization whose motto is "Service, Sacrifice and Loyalty". By following these virtues they have formed one of the strongest brotherhoods on campus.

Campus Crusade is relevant

Campus Crusade for Christ is an interdenominational student movement whose emphasis is on the person of Christ and establishing a personal relationship with Him. Since Christ is the focal point, there are informal programs, athletic teams, presentations in clubs and classrooms, Bible studies, and one-to-one contact with students to share how Christ can be relevant to them today.

Also provided are opportunities for growth in Christian experience in small and large group settings. There will be a table in the SUB during registration for more information.



The Tri Delta house, located at 1010 Lincoln, shows the effects after being hit during a festive Greek raid.

Delta Delta Delta stress scholarship, fun

Delta Delta Delta is one of four National "Social" Sororities on Boise State's campus. This chapter was started in 1969 and has a House located at 1010 Lincoln. The officers for this year are: Patti Lind, Social Chairman; Stacie Betebenner, Vice-President and Pledge Trainer; and Teri Robinson, President.

Delta Delta Delta's philanthropy is to award a scholarship to any full-time woman student at Boise State University. We also raise money for the research and care of tumorous cancer in children.

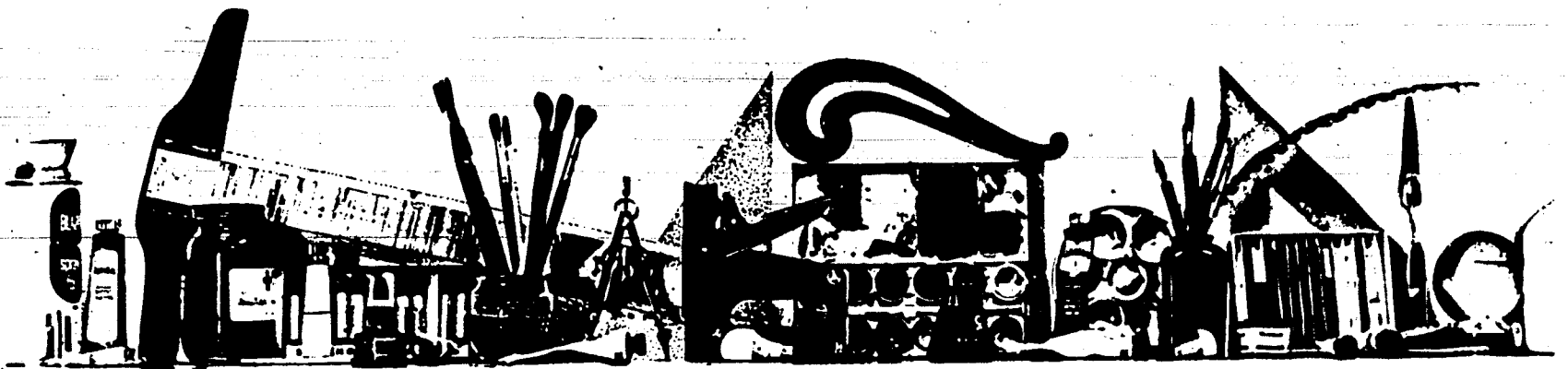
This sorority also stresses the importance of high scholarship and good study habits. We have always maintained one of the highest scholastic averages for organizations on campus.

Some of our social activities include: Firesides, exchanges with the various fraternities, retreats to

McCall and Lowman, working at concerts and lectures, raids, Greek sections at the football and basketball games, innertubing at Steamboat Springs Winter Rope-tow, date barbecues and holiday parties, and a variety of other things.

Delta Delta Delta is a great way to meet a lot of people, to get involved in campus and community activities, and to make your college years more enjoyable and rewarding.

Any full-time women students interested in joining a sorority may go through Formal Rush, which starts September 3 and continues through the 6th, or may wait and go through Open Rush, which continues throughout the year. For more information, please contact Christa Bax in the Student Activities Office in the Student Union Building.

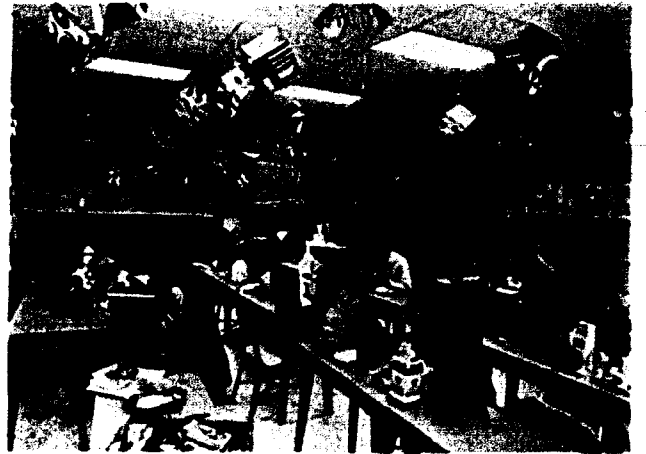


Art students do many things besides the usual. Here students work with metals later to be made into statuary.



Different techniques are taught to achieve different affects.

Art



Art classes come in many shapes and sizes and so does the art work the students produce.

Boise State University's Art Department is offering four classes this fall that are new to its growing curriculum.

"Beginning Weaving" is a basic, down-to-earth course designed to introduce weaving from its beginning stages. Students will learn on primitive looms and/or off the loom. They will be instructed on how to wash, card, spin, and dye their own wool.

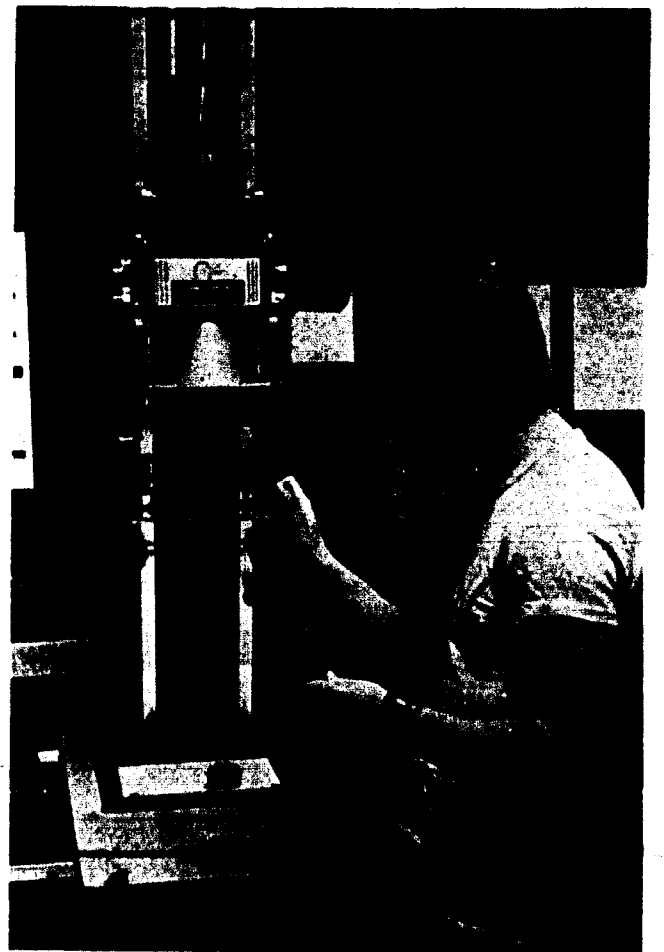
"Tapestry Weaving" will cover a variety of tapestry techniques. Students will do their weaving on handmade tapestry frame looms.

A Special Topics course being offered is "Fabrics".

The course will instruct students on the art of "designing with various fabrics" which includes such things as stuffed three-dimensional forms, quilt making, macrame, fabric jewelry, and wall hangings.

"Leaded Glass Crafts", also a Special Topics course, is designed to introduce students to leaded glass as an artistic media and craft. Instruction and actual experience will be implemented in creating artwork using glass with the leaded foil method, cutting, staining glass, etc. Emphasis will be placed on three-dimensional objects such as terrariums, lamps, etc.

Please direct any inquiries to Boise State University's Art Department, Room LA252-F, or phone 385-1247.



Photography from beginning to advanced is also featured in the art department.

ADA GALLERY
Formerly the Ada Lounge
Monday - September 9 through
Friday - October 4
The works of
JIM DOOLIN AND
WILLIE BROWNLEE
"Hyper-Realism"



UNIVERSITY GALLERY
LA Building
announces
KEISHO OKAYAMA
His works to be displayed from
September 9 through October 4
11 AM to 5:00 PM
Monday through Friday

THEATRE



"Step the World. I Want to Get Off." 1972

The Theatre Arts Department of Boise State University has scheduled a challenging number of activities for the ensuing year. The department will produce five major productions, host two conferences, offer established and new courses, provide touring children's theatre for Boise area elementary schools, and entertain civic and school organizations with the offerings of the theatre repertory group.

Participation in theatre activities is open to all BSU students regardless of major.

This year's theatre season offers a wide selection of dramatic experiences. A Greek tragedy, "The Trojan Women" by Euripides, opens an action-packed season with a ten-night run beginning October 17. This powerful and moving play which concerns the pitiful fate of the survivors of Troy will be directed by Dr. Lauterbach.

Department chairman, Dr. Robert E. Ericson, will direct the second show of the fall semester, "The Thurber Carnival". This delightful and merry revue by America's beloved James Thurber will play December 5-14.

Samuel Beckett's "Waiting for Godot" will be offered as the first show of second semester, running from January 30 through February 8. Guest director, Larry West, will stage this engrossing comic and tragic view of the human condition.

"Born Yesterday" by Garson Kanin will be performed March 7-15 under the direction of Dr. Ericson. "Born Yesterday", a successful comedy twenty years ago, is again timely through its story of governmental payoffs and corruption.

The season will end on a shivery, shuddery note with the production of "Count Dracula" by Ted Tiller. Dr. Lauterbach will direct this adaptation of Bram Stoker's classic tale of vampires and victims which plays April 24 through May 3.

All BSU students with activity cards may obtain free admission to major productions by calling and reserving seats in advance.

The Theatre Arts Department will host the Rocky Mountain Theatre Conference. Over two hundred delegates from five western states are expected to attend the three-day conference beginning



"As You Like It"--1974.

October 31.

In addition to the Rocky Mountain Theatre Conference, the Theatre Arts Department will sponsor the Annual Idaho Invitational Theatre Arts Festival.

In late January, high school students from all parts of Idaho will meet on campus to compete for theatre scholarships and awards. Last year's theatre festival attracted about 500 students.

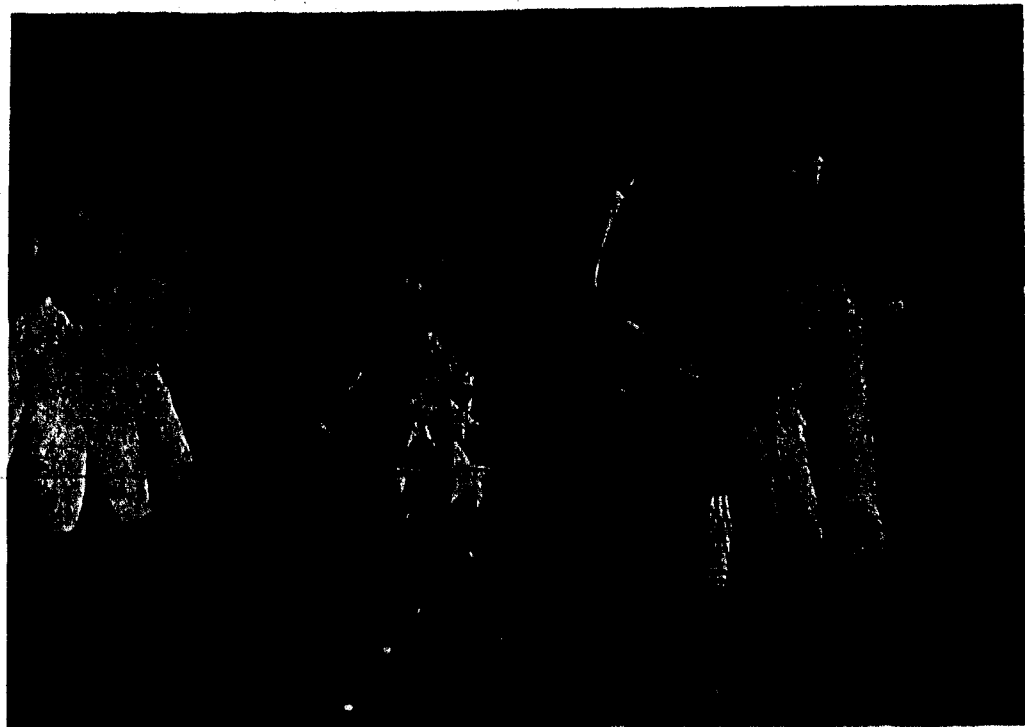
This year's offerings in the Department of Theatre Arts provide chances for a variety of dramatic and theatrical training. Of special interest this semester is Roger Bedard's class in puppetry which will be offered on Tuesday evenings. The rather popular class, "Cinema: History and Aesthetics", will again be offered this fall semester.

Children's theatre and repertory theatre are two means by which the theatre department serves the Boise area community. In the children's theatre program, BSU students create short plays and entertainments for elementary school children and perform them in the local schools. Last spring alone, over 14,000 young people were treated to live theatre by the BSU's children's theatre troupe under the supervision of Roger Bedard.

The repertory theatre program may be unique. In this program, students prepared short scenes from plays and other entertainments. This prepared material is then utilized in a variety of performance experiences. Scenes are presented as an aid to education in the Introduction to Theatre classes for civic groups such as the Rotarians, as well as high school assemblies which are provided with university level performance.

The major activities outlined above consume a great deal of student time and energy. The department can always use talent and skills on and off stage. As Dr. Ericson, Department Chairman says, "All BSU students are most welcome to participate in any capacity involving theatre programs. It is not necessary to be a theatre major to do theatre work. All we ask is your interest and dedication with just a bit of blood, sweat, and tears thrown in".

BSU students can help theatre on campus by attending Subal Theatre productions. Many students do not realize that they may receive free admission to all Theatre Arts productions. Student fees are used, in part, to produce the plays so it is only fair that students should be allowed to attend plays without cost. Tickets are free, but reservations must be made due to the limited number of seats in the Subal Theatre. Productions run for ten nights to accommodate as many students as possible. The Subal Theatre box office will be open afternoons one week prior to opening night. Reservations may be made by phone. Reservations will be held until fifteen minutes before curtain. If tickets are not picked up by then, the reservation is cancelled and the tickets may be given or sold to any waiting theatre patrons.



Repertory Theatre presents a nostalgia review--1974.



Childrens Theatre--1973



MUSIC



Besides the usual classes students in choir often travel and perform for the public.

Band students also perform publically.



WONDERING WHAT TO DO WITH YOUR SPARE TIME?

If you're wondering what to do with your spare time this fall, Greg Hampton and Mike Wentworth would like to extend an open invitation to all Boise State University students, alumni, faculty, and staff to visit the games area. The games area hours are from 8:30 AM to 12:00 noon Monday through Thursday; 8:30 AM to 1:00 AM Saturday, 12:00 noon to 12:00 noon Sunday. Facilities in the game room include:

- 10 Pocket billiards 1.00 hr
- 2 Snooker tables 1.00 hr
- 1 Three-cushion table 1.00 hr
- 1 Bumper Pool 1.00 hr
- 2 AMF Bowling -10 shoes .40 gme
- 2 Table tennis .50 gme
- 8 Football tables .25 gme
- 1 Shuffle board 1.00 hr
- 2 Pong machiner .25 gme
- 1 Air Hockey .25 hr
- 1 Soccer game .25 hr
- 8 Pin ball machines .25 hr

In addition to the facilities there are games which require only BSU Activity and Identification Cards. These games include:

- Outdoor survival & information
- Regular playing cards
- Pinochle cards
- Cribbage Boards
- Checkers
- Chess

There is also outdoor recreation equipment available for rent. This includes:

- 5 Speed bikes
 - 2 female
 - 1 male
 - 3 tandems
- 2 Croquet sets
- 2 Lawn dart sets
- 3 Basketballs
- 3 Softball bats & soft balls
- 5 Softball gloves
- 4 Tennis racquets & balls
- 2 Badminton sets
- 2 Volleyball sets
- 2 Horseshoe sets

Available the third or fourth week of school:

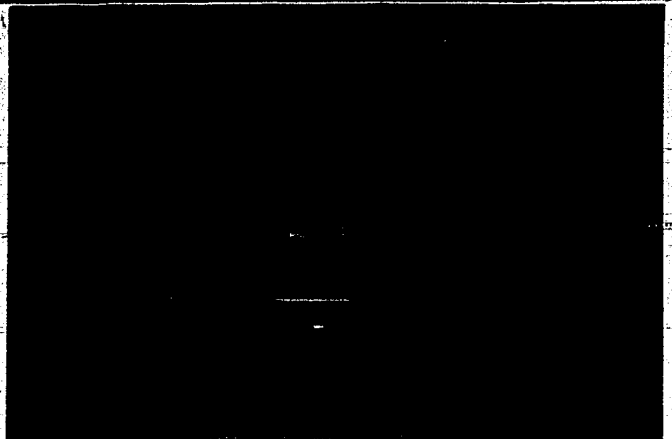
- 15 Backpacks
- 15 Sleeping bags
- Backpack cooking gear
- 2 2-man tents
- 5 2-man flies
- 5 Pairs snow shoes
- 5 Pairs cross-country skis
- Climbing gear

The activities which are tentatively planned for the fall semester are:

- A. Womens Bowling League on Monday nights
- B. Mens Bowling League on Thursday nights
- C. Bowling Leagues Tuesday and Wednesday nights with a mixed doubles on Sunday night
- D. Eight ball tournament
- E. Billiards tournament
- F. Snooker tournament
- G. Table tennis tournament
- H. Air hockey tournament

The dates of the tournaments will be advertised one to two weeks in advance of the tournaments. In addition to the bowling leagues and tournaments, there will be special half price days and at least one free day per month. There will also be bowling classes Monday through Thursday from 8:40 AM to 12:30 PM taught by Chris Moore, the Bowling Team Coach.

Greg and Mike would like the students to know that they have an open door policy as to what students would like in the games area.



KNAP GREETS 1974 FOOTBALL SQUAD



Boise State University head coach Tony Knap began his seventh year as the man in charge of the football fortunes of the Broncos Wednesday, August 21, when he greeted some 90 grid prospects.

The Broncos went before the television lights, pictures, and interviews in the traditional "Picture Day" Wednesday and had physicals and equipment issued to them.

The team members got into their own kind of teaching on Thursday when they held a football clinic for some 1000 Optomist "Little League" football players. The Optomist players watched the Broncos go through physical tests on the field and in the afternoon they went out on the field with the Broncos for pointers at their respective positions.

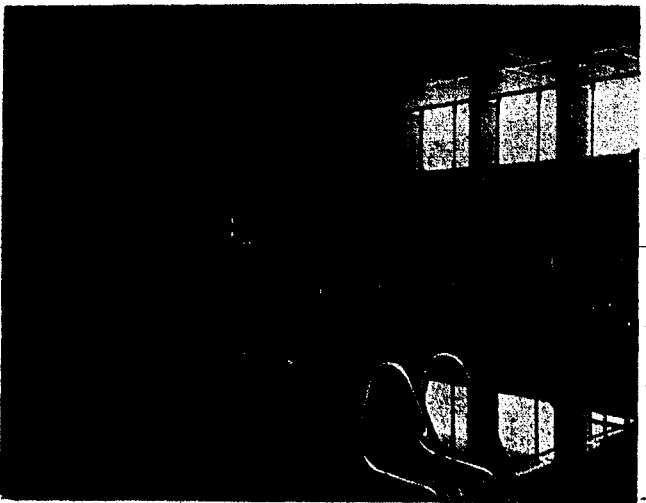
The serious work began Thursday afternoon with the first regular practice session with two-a-days slated for Friday.

"We always face a new challenge in the fall", Knap said. "We have a fine group of returning veterans and newcomers. I am looking forward to the season".

The Broncos will again be in the running for the Big Sky Conference football championships this year.

Last season they won the title with a perfect 6-0 league mark and have been selected to repeat the honor (a selection which has been the "Kiss of Death" in past years).

Boise State will open their season September 14 against Cal Poly (SLO) in San Luis Obispo, California, and then return home for a clash with Chico State University in Bronco Stadium on September 21.



- Monday 4:30-9:00
- Tuesday 4:30-7:00
- Wednesday 4:30-9:00
- Thursday 4:30-7:00
- Friday 4:30-9:00
- Saturday 1:00-5:00
- Sunday 1:00-5:00

**The Pool is Yours to Enjoy.
You May Utilize This Facility
During the Above Hours**



Rodeo Keeps Old West Alive

The spirit and color of the Old West are kept alive in this modern era through the rugged sport of college Rodeo. The Boise State Rodeo team is a member of the National Intercollegiate Rodeo Association. There are more than 150 colleges and universities in the N.I.R.A.

Boise State is in the Rocky Mountain region of the N.I.R.A. and competes against 15 schools in Idaho and Utah. With a nucleus of many returning members, this year's team could be very strong. Anyone interested in the team, please contact Gary Rebeiro at the Food Service Office.



New Coach for Women's Sports Announced

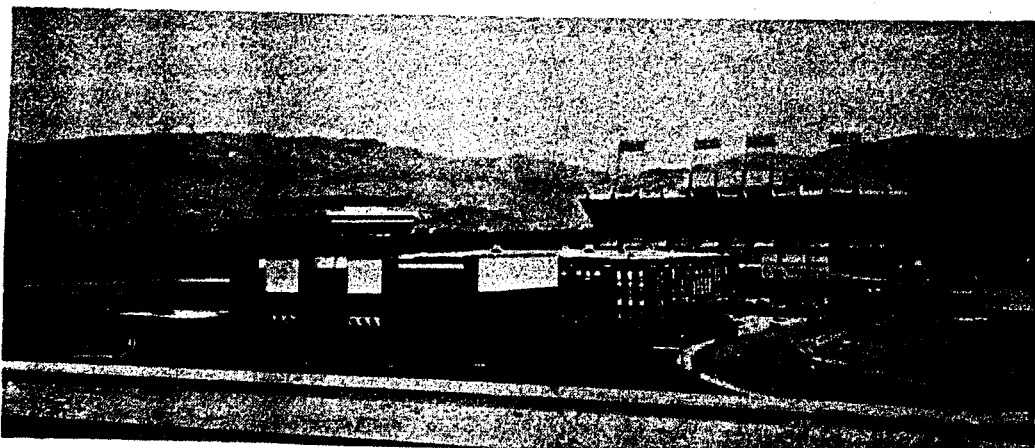
The women's athletic director is pleased to announce the addition of a new coach in the women's intercollegiate sports program. Ginger Fahleson from Lincoln, Nebraska, has been hired as an instructor in Physical Education and will be in charge of the volleyball, track, and field teams. This should enhance playing opportunities in both of these popular sports.

Volleyball team practice will begin the first day of classes and will be held at 12:30 Monday, Wednesday and Friday in the main gymnasium. Miss Fahleson hopes that everyone interested in outstanding volleyball competition will come out for the team. State Tournament will be held at Northwest Nazarene College November 8 and 9 and Northwest will be at Willamette University on December 6 and 7.

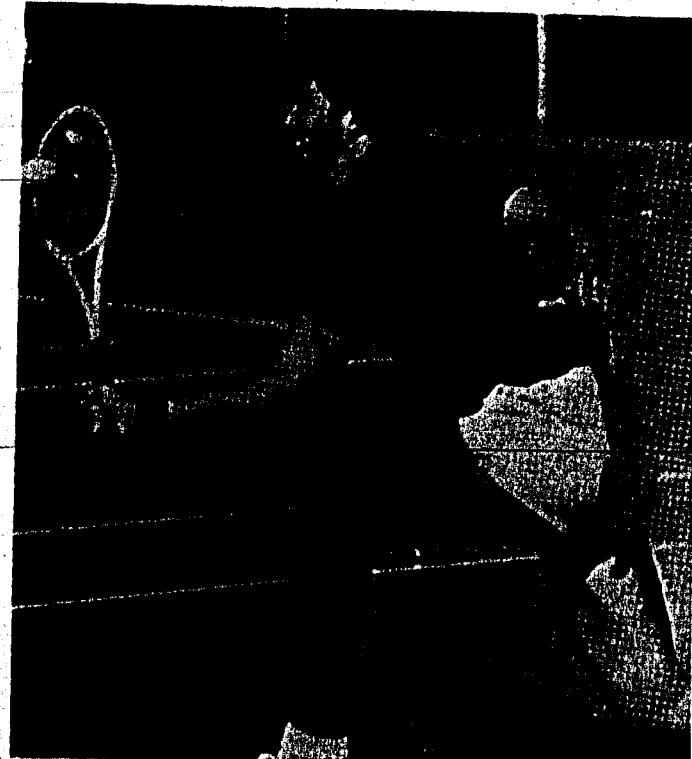
The field hockey team coached by Connie Thorngren will open its season against College of Idaho on September 26. Highlights for the season will be a trip to Moscow on October 26 and 27 to play University of Idaho, Washington State University and the University of Victoria, and attendance at the Northwest "A" Division tournament at Central Washington State College on November 22 and 23.

The Hockey team was undefeated in 12 games last year and this year will have a bigger and tougher schedule. Practice will begin Tuesday, September 3 at 2:30. All women are invited to come out for the team even if they have never played field hockey.

Gymnastics team practice will be daily from 2:30 to 4:30. Contact coach Pat Holman for more information. Gymnastics competition will begin in January.



Tennis Club to Start Sept. 7



Tennis buffs who have a hard time finding partners need look no more. The sports department is sponsoring a Saturday morning tennis club open to all men and women from beginners to advanced, according to Jean Boyles, tennis club advisor.

The club is slated to begin play Saturday, September 7 and continue until "The snow flies", according to Boyles. The times are from 9:00 AM until noon.

The club's main function is to provide partners for tennis freaks and also to provide a place to play.

The women's varsity tennis team is getting underway according to Jean Boyles, coach, and all interested girls are invited to participate. The team plays in inter-school competition and all those who are interested are urged to contact Jean Boyles at 385-1570, as soon as possible.



Basketball Schedule Announced

Four new names appear on the 1974-75 Boise State basketball schedule announced by Bronco athletic director Lyle Smith

The new schools are Cal State Fullerton, Northern Colorado University, Chico State and Colorado State University. The Broncos will also be playing the University of Washington in Seattle, have home and away clashes with Utah State University and a full complement of Big Sky Conference encounters.

The Broncos open their schedule in a home game on November 30 against Athletes in Action and then host Utah State on December 2 in Boise. Coach Bus Connor's team then travels to Seattle for a game with the Washington Huskies on December 6.

Last year the Broncos were 12-14 overall and 6-8 in Big Sky competition. They will open the 1975 Big Sky race on January 18 in Boise against Idaho State University, the defending Big Sky champion.

Athletes in Action	Boise	11-30-74
Utah State University	Boise	12-2-74
University of Washington	Seattle	12-6-74
University of Puget Sound	Tacoma	12-7-74
College of Great Falls	Boise	12-11-74
Cal State Fullerton	Fullerton	12-14-74
Northern Colorado	Boise	12-16-74
Portland State	Portland	12-20-74
Chico State	Boise	12-21-74
Colorado State	Fort Collins	12-28-74
Portland State	Boise	1-3-75
Utah State	Logan	1-13-75
*Idaho State University	Boise	1-18-75
*Gonzaga University	Boise	1-24-75
*University of Idaho	Boise	1-25-75
*Weber State College	Boise	1-30-75
*Northern Arizona	Boise	2-1-75
*Weber State College	Boise	2-1-75
*Northern Arizona	Ogden	2-6-75
*University of Montana	Flagstaff	2-8-75
*Montana State	Boise	2-14-75
*University of Montana	Boise	2-15-75
*Montana State	Missoula	2-21-75
Eastern Montana	Bozeman	2-22-75
*Gonzaga University	Billings	2-24-75
*University of Idaho	Spokane	2-28-75
*Idaho State	Moscow	3-1-75
	Pocatello	3-5-75

*...Indicates Big Sky Conference games

Two Idaho Baseballers Sign With Broncos

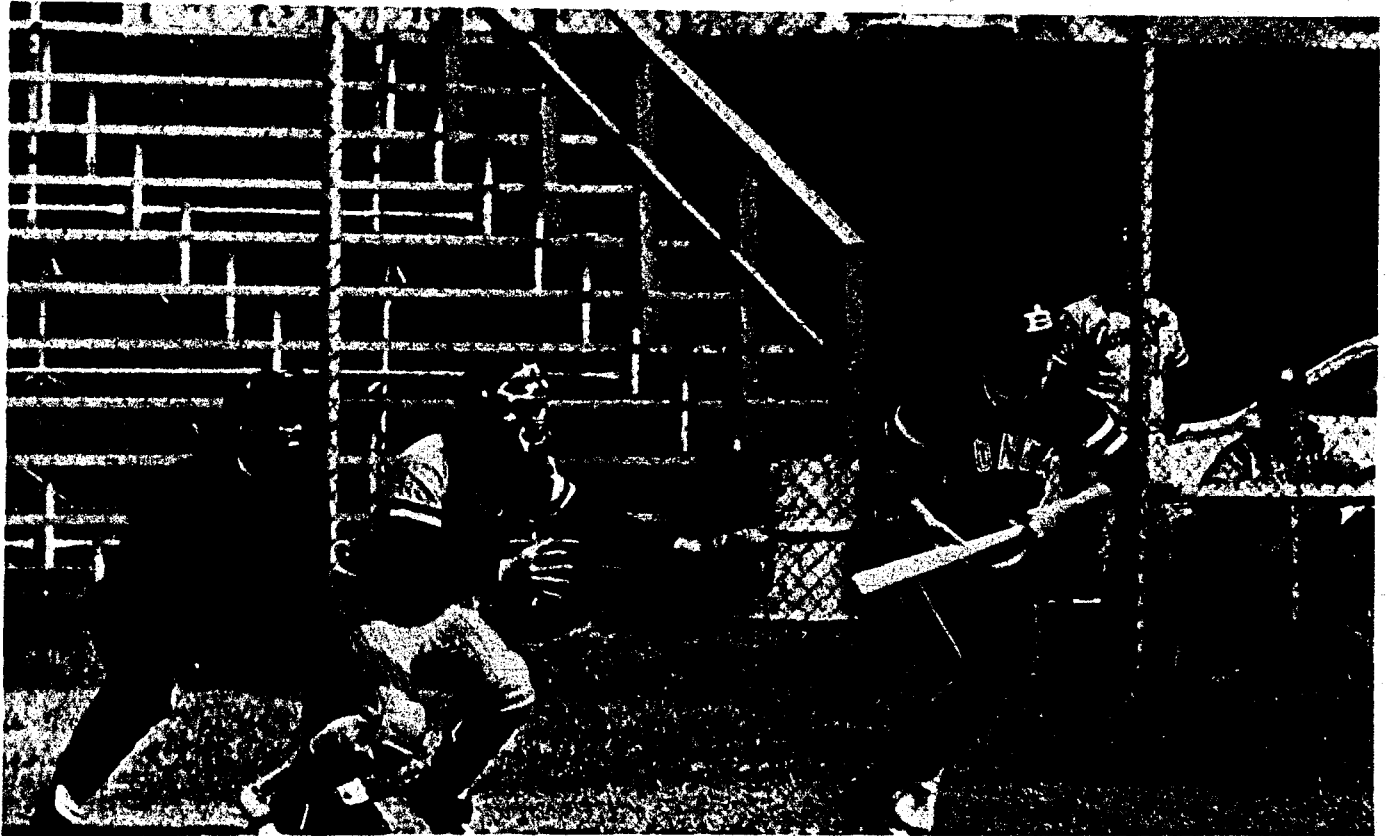
Two baseball players from the State of Idaho have signed national letters of intent to attend Boise State University this fall, according to Bronco baseball coach Ross Vaughn.

The two players are junior college transfer Steve Patton from Payette, Idaho, and freshman Larry Froemming from Caldwell, Idaho.

Patton, who is an infielder and outfielder, played for Treasure Valley Community College where he hit .345 last spring. He was among the JC leaders in the nation last year with 15 home runs and was an honorable mention All American in the National Junior College Athletic Association. He bats and throws right-handed.

Froemming was not only a pitcher for the Caldwell High School team, but was also a hurler for the Caldwell Silver Streaks American Legion team. The Silver Streaks were the state American Legion champions.

The left-handed hurler was a member of the All-district high school team while compiling a 7-2 mark. He was 10-3 while pitching for the Silver Streaks this past summer.



Broncos Ranked High

Boise State's football team is fifth in the nation among Division II and III teams in scoring offense over the past five years. In statistics released by the National Collegiate Sports Services (NCSS), the Broncos have averaged 32.06 points per game the past five years.

Leading the list among Division II and III schools was Tennessee State with 37.08 ppg the past five

years. The other top schools are Delaware, 36.53; West Chester, 34.57; Ft. Valley State, 33.60 and then Boise State with their 32.06.

The NCSS also said that Bronco head coach Tony Knap is ranked 13th among active Division II and

III coaches in winning percentage with a .724 mark.

Knap, in 10 years of coaching (four at Utah State and six at BSU), has a 77-20-1 mark. Since coming to Boise State, he has a 52-15-0 mark for a winning percentage of

.776. The coach with the most wins is Dave Maurer of Wittenberg, who has a 41-8-0 (.837) mark in his five years of being head coach.

The Broncos are also listed as the sixteenth winningest football team in the past five seasons in Division II and III. Boise State has a 42-12

mark with a winning percentage of .778 in those five years. Leading the list of winningest teams is Tennessee State with a 45-3-1 mark and a winning percentage of .929.



What can just one private citizen do?

Ralph Nader urges you to become a Public Citizen

Dear Fellow Citizen:

Imagine that 25 or 30 years ago citizens concerned about the future quality of life in America had gotten together to do something about it.

Suppose they had begun an effective citizen's campaign to make government agencies and industry management sensitive and responsive to the needs of the people. The *real* needs, of *all* the people.

Think how much that was already wrong would have been corrected by now. Think how much that has gone wrong since then would never have been allowed to happen.

If the public had acted years ago, we would long ago have eliminated or minimized the inexcusable pockets of poverty in our land of plenty; the vile and violent contaminants that pollute our air and water; the ravaging of our land by insensitive corporate and government forces; the sickening, often lethal, chemicals, gases and dust in many of our factories, foundries and mines; the unrestrained power and expenditures of our military establishment; the inequities in taxation that takes 20% of workers' wages while many with enormous incomes pay little or *nothing*.

Our people would not be disenchanted and disillusioned. And the prevailing mood in America would not have turned from confidence and pride and hope to growing feelings of frustration and outrage and hopelessness.

What if we don't act now?

In another 30 years our population will have doubled. What if our rampant economic "growth" is allowed to continue indiscriminately—mindless of the public's hopes and indifferent to their problems?

What if we continue to do nothing because we assume that others are taking care of these problems?

Who is taking care of them?

It is clear that our institutions, public and private, are not really performing their regulatory functions. They tend not to control power democratically, but to concentrate it and to serve special interest groups at the expense of voiceless citizens.

Almost all the organized legal representation in our country is working to protect private interests and private wealth.

Who represents the citizen? Only ourselves. And that is why I urge you, as a public citizen—a citizen concerned about your community and your country—to support Public Citizen.

If we do not speak up in the public interest now, if we allow the problems to multiply, life in America could be intolerable. Perhaps impossible.

**Citizen Advocates-Citizen Supporters
A Cause for Optimism**

We have seen how a few determined citizens can overcome overwhelming odds to better their communities. What has been accomplished so far is not the work of one person but of more than 30 young men and women—lawyers, other professionals and students. If more valiant and dedicated people were able to work on a broader scale, think how much more could be accomplished.

Thousands of graduates of law, medical, science and engineering schools and other disciplines want to work long hours, at minimal wages in the public interest. They know that our society cannot solve its problems if all our most highly trained professionals work for private industry or government agencies.

If these selfless young people are willing to sacrifice conventional rewards to pioneer the future, other public spirited citizens will surely want to make it possible for them to do so.

Through Public Citizen, we ask concerned students to contribute \$5.00 (non-students are sending \$15.00 or more) to support a lean, hard-working group of these citizen-advocates.

Through published studies and documentation, they will help to sharpen public awareness of our problems. Public awareness leads to public action.

Historically, the idealism and energy of students has been a potent force for change. We hope to provide a dynamic vehicle and clear goals for those hopeful qualities by organizing student supported public interest groups throughout the country to work for lasting change through an orderly, democratic system.

They will represent disadvantaged minority groups, before the various legal agencies of state and federal governments. They will seek to temper the actions of large corporations that have acquired power far out of proportion to their contributions to society.

In some important way, every major company touches on the lives of thousands of people—employees, consumers, retailers, taxpayers and whole communities. Shouldn't these people have a voice about policies that directly and adversely affect them? Must not a just legal system accord victims the ability to deter forces that tend to victimize them?

A way must be found to make a real impact on corporate boardrooms—and on government agencies that often serve as protectors, even service arms, of the industries they are supposed to regulate.

Bureaucrats cannot easily resist the overwhelming pressures of special interest lobbies in Washington and state capitals. But there can be a greater countervailing pressure—the determination of citizens lobbying for the public interest.

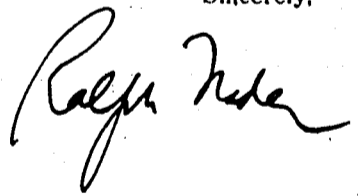
Once a year, as a Public Citizen supporter, you will receive a report on significant new citizen involvements that have been effective in achieving reform or relief at the local, state, or national level. Hopefully, you will apply them in the areas of your own commitment to action. Citizenship skills must be continually sharpened and used if we are to succeed in preventing or diminishing injustice.

Potentially, there are 200 million of us unable to work full-time for the public interest but with a full-time anxiety about it. Think how much can be accomplished if enough private citizens become *public citizens*.

Please mail the coupon and your check for \$5 or more to help Public Citizen continue and expand the work that is already under way.

Let it not be said by a future, forlorn generation that we wasted and lost our great potential because our despair was so deep we didn't even try, or because each of us thought someone else was worrying about our problems.

Sincerely,



Public Citizen, Inc.
P.O. Box 19404, Washington, D.C. 20036

I am a Public Citizen. Enclosed is my
 Student contribution of \$5.00.
 Non-student contribution of \$15.00.
 Additional contribution of \$ _____

Please don't waste any of it sending me a thank-you letter, a membership card or literature. I know what's wrong. What I want is to see something done about it.

Name _____

Address _____

City _____

State _____ Zip _____

Please make check payable to:
Public Citizen, Inc.

102