

4-25-1974

Arbiter, April 25

Associated Students of Boise State University

Although this file was scanned from the highest-quality microfilm held by Boise State University, it reveals the limitations of the source microfilm. It is possible to perform a text search of much of this material; however, there are sections where the source microfilm was too faint or unreadable to allow for text scanning. For assistance with this collection of student newspapers, please contact Special Collections and Archives at archives@boisestate.edu.

Arbiter

April 25, 1974

Greek Week April 29-May 4

'Bacchus bust' -- Greeks go wild

April 29th through May 4 marks the annual BSU Greek Week. Though many of the events are open only to sororities or fraternities, all students are invited to participate in the Greek Carnival, the Greek Grog, and the TKE Raft Race.

The week begins on Sunday, April 29, with a Box Social between the Kappa Sigma House and the Sigma Tau Gamma House on Main Street.

On Monday the sororities will have a Progressive Dinner, while the fraternities will have a softball game.

Wednesday, May 1st, the Sigma Tau Gamma fraternity will sponsor the annual Greek Grog at the Mardi Gras. Happy Hour will be from 8:00 -9:00 pm with dancing from 7:00-1:00.

Thursday the Interfraternity Council will sponsor the Greek Carnival on the field north of the SUB. The events will include: Frisbee Toss 10:00 am, Egg Toss 11:00 am, Bike Race 11:30 am, Keg Toss 12:00, Volleyball Tournament 12:30 pm, Tug-of-War 1:30 pm, 3-legged race and sack race 2:30 pm. Participation in these events is open to all students with no entry fees. Sign up before Thursday, otherwise you may register for the event in front of the SUB.

Friday, the Kappa Sigma's will sponsor the annual Greek Orgy. This is an end of school bash. All Greeks attend in costume. The Greek Goddess and the Greek God will be announced.

The concluding event of the week will be the TKE raft race. Registration will end at noon, Saturday, May 4. Races will start at 1:00 p.m. at Barber Bridge. The TKE's expect that this year's race will be the fastest on record because of the height of the river this year.



Greek Week begins this year on April 29 and runs through the 4th of May. Some of the events being planned are a Greek Grog at the Mardi Gras, a carnival sponsored by the Interfraternity Council, and the annual Greek Orgy. Winding up the seven day event is the TKE raft race, which begins at Barber Bridge and ends at Ann Morrison Park.

Student policy board debates the legality of segregation

The BSU policy board held an open hearing March 18 to decide on the legality of segregating fraternities and sororities on campus.

was then raised by the policy board whether or not other organizations which restricted membership by sex were also in violation of the constitution.

The hearing stemmed from an incident involving Pi Sigma Epsilon, a professional business fraternity, in which the ASB judiciary placed them on probation until they complied with the student constitution and admitted women to the organization. The prohibitory action resulted in a change in the fraternity's national constitution which had previously barred female members. The question

The argument came up again and again by members of Greek organizations held that there is a difference between professional fraternities, such as Pi Sigma Epsilon, and social fraternities and sororities that do nothing in the way of securing jobs for their members.

According to policy board chairperson Sue Mitchell, another hearing will be held this week before the board makes a final decision.

Poll planned to gather student opinion on matriculation fee

Students will be polled next week in classes selected at random to determine whether they favor eliminating BSU's \$10 matriculation fee or channeling the money into a scholarship fund. The \$25,000 - \$30,000 collected every year from applicants to Boise State is presently being deposited in the general institutional fund.

The proposal to use the money for scholarships was made by the Financial Aids Committee, which is now in the process of allocating scholarship dollars, and brought to the Academic Standards Committee by Dean of Admissions Guy Hunt. Hunt, a member of both committees, had previously requested that the matriculation fee be deleted as an admission requirement.

The limited amount of institutional scholarship funds available this year, however,

prompted discussion in the Financial Aids Committee about other sources of money. Hunt suggested the matriculation fee, and Dennis Parry, ASBSU representative to the committee, moved that the matriculation fee be retained and earmarked for scholarships.

BSU is the only school in the state that still charges a matriculation fee, which Hunt calls "discriminatory, and hard to defend as we now collect it." Lee Mercy, Associate Registrar, said elimination of the fee would probably increase the volume of people asking for information and applying to the University. This would be regarded favorably by the administration.

The matriculation fee was originally charged to cover the cost of sending materials to applicants, but Alan LeBaron, ASBSU representative to

Academic Standards Committee, pointed out that other state schools no longer find it necessary to charge the fee. He indicated that they must be finding money for mailing and paper somewhere else.

If either of the proposals is approved, it would not be implemented until February 1, 1975. The University would be able to absorb the loss of the money by this date, according to Roger Green, Vice-President for Financial Affairs.

This poll is being conducted by the Academic Standards Committee, and the results will not resolve the question, but merely aid the committee in its decision. The Academic Standards Committee will send its recommendations to the Faculty Senate, and if the Senate approves it, it will proceed through regular bureaucratic channels.

cold-drill wins top honors in collegiate competition

THE COLD-DRILL, Department of English literary magazine, won top honors last week in the annual Rocky Mountain Collegiate Press Association competition. The RMCPA is composed of colleges and universities from nine intermountain states and is administered by the University of Utah's Division of Journalism and Mass Communication. This year's competition convention was held April 18-20 at Billings, Montana.

The 1973-74 issue was awarded first place honors in the category of Literary Magazine General Excellence. Other awards included a third place trophy for Typography, Layout and Design.

Individual COLD-DRILL authors also were award winners: Nampan Chip Knight's poem "The Farm Awakes" garnered second place in the Poetry division; "Ancient Myth and Modern Science," an essay by Fran Smith, Idaho City, won second place in the Non-Fiction category; and "Warm Lake Trilogy" by Boisean Michael Ostrogorsky was given a third place award in the short story division.

A few copies of this year's magazine edited by Richard Huffstodt, Kathleen O'Brien and William Woodall remain on sale at the BSU Bookstore.



BSU Alumni Director, James "Dyke" Nally (left) and team members Butch Otter (center) and Eric Guthrie (right) discuss plans for Saturday's Alumni game.



Who's on first in the second?

The second district congressional race is shaping up into what could be the most interesting political contest in Idaho in many years. It appears that Congressman Orval Hansen is going to be challenged in the Republican primary by former second district congressman George Hansen. To further confuse matters, it looks like former Democratic candidate for Governor, H. Max Hanson, is going to take a shot at the Democratic nomination for this same second district congressional seat.

This leads to some interesting possibilities. Suppose that George Hansen, generally conceded to be the more conservative of the two announced candidates, decides to try and make his image a bit more liberal, thus stealing Orval Hansen's thunder. He would then be accused of trying to out-Hansen Hansen.

Or Orval Hansen might decide

to bite to the right, mending fences with the conservatives. Then he will be out-Hansening Hansen. Unless of course Max Hanson comes through with the Democratic nomination. Then both Republican Hansens, after months of out-Hansening Hansen in the primary will also have to worry about out-Hansening Hanson in the general.

I can't say that Idaho has ever been faced with such a predicament. Unlike the 1972 national election in which, as we all know, we had the choice of a century, this Idaho election seems to offer us only the consolation of settling for the lesser of two (three?) Hansens (Hansons?).

It has been suggested that the solution to this matter is for each of the candidates to pick some other political figure to "out." At first it was thought that George Hansen would come forward with a strong anti-drug statement, thus out-Parking Park who, as

state Attorney General, was out-Nixoning Nixon by rounding up Democrats in Eastern Idaho suspected of being dopers. But then Andrus signed the pot bill and in so doing out-Parked Park before Hansen could out-Park Park in his attempt to be a stronger Hansen than Hansen.

Meanwhile Jack Murphy out-Murphyed Murphy by falling off a horse (and out of the race), thus losing his chance to out-Andrus Andrus (who, as we remember from the last episode is out-Parking Park.)

I can't say that matters are going to get any clearer between now and the August primary election. In fact it looks as if things will get a bit more confused (if this is possible.) About the only advice which can be given to the voters of the second district is to get out and vote. Vote for the Hansen (Hanson) of your choice, but vote.

David H. Morrissey

A view of the marketplace

Editor's note: These articles by Dr. Scudder and Dr. Davis were solicited by the Arbiter after the issue of how to allocate faculty pay increases had been hashed out in the Faculty Senate and the new formula for allocating pay increases was approved by that body. Since that time Dr. Barnes has stated that he cannot comply with the Faculty Senate's recommendations, and State Board of Education officers Janet Hay and J. P. Munson have upheld Barnes' decision. (see p. 3 for article.)

by **Duston R Scudder**

Marketing Department Chairman

In recent weeks there has been much discussion on the part of the Boise State University faculty concerning the question of faculty salaries. A view shared by many of the faculty in the School of Business is that there is a relationship between some basic economic concepts and salaries.

One concept is that the attempts of the individuals to further their economic self-interest with the guidance furnished by the price system results in competition. This concept is basic to our economy. Competition means that a firm will fall by the wayside when it supplies goods or services that are not suited to consumer desires, that are of unsatisfactory quality, or that cost more than similar alternatives. When the supply is short of the demand the price tends to rise. The price then tends to attract new competitors into the market. When the supply is greater than the demand, the price tends to fall to a lower level in order to make it a more attractive item.

When we apply this to the supply of college instructors in various areas, we also must look at the alternatives that these individuals have for the demand of their skills and abilities. Those instructors who are involved in such academic areas as engineering, science, and business have the opportunity for employment outside the field of education.

According to the 1973 issue of THE U.S. STATISTICAL ABSTRACT, there were only 810 persons granted doctorates in business and commerce during the year 1971. There were 991 granted doctorates in history; 781 in foreign language; 6398 in education; 4390 in physical sciences; 3645 in biological sciences for examples for comparison. An even more critical example is in the area of accounting where only 61 doctorates were granted. This area

currently has one of the highest demands; therefore, because of the lack of trained individuals in this field, their salaries are higher.

The 1974 TRENDS IN EMPLOYMENT OF COLLEGE AND UNIVERSITY GRADUATES IN BUSINESS AND INDUSTRY, prepared by Frank S. Endicott, Director of Placement at Northwestern University, states that the placement and salaries of new graduates in the field of accounting are exceeded only by only by engineering with an average starting salary of \$963 per month. The BSU Accounting graduates are similarly receiving top salaries. The salaries currently being paid attract more students, which increases the demand for qualified teachers, who are as previously indicated, in short supply. This demand again increases the salary necessary to attract individuals with the knowledge, skill, ability, and desire from the limited number available. The time necessary to obtain the doctorate degree, plus the desirability of having passed the examination to be recognized by the profession and the state as a Certified Public Accountant, creates a time lag in the market place of several years. During this period of time it is difficult, if not impossible, to secure qualified individuals.

The concern of the School of Business, using the accounting area as our most critical example, is that we are losing and may lose more qualified staff members in this department, which has one of the largest enrollments in the entire University.

If top quality staff members are not maintained in this area, students will transfer to other institutions to secure the type of professional training they expect to receive at Boise State University. Those areas which provide classes such as English, speech, science, and math will suffer because of loss in enrollment. The entire University suffers under such circumstances.

Marketability

But will you respect me in the morning?

by **Charles G. Davis**
English Department Chairman

What function does "marketability" play in salary determination? That depends, as the callous suitor told the pretty young thing when she asked if he loved her, on what you do and how good you are. Like the young thing, job aspirants would be wise to remember that the proposal is not as important as what happens after that. What you can expect for what you do depends on several factors.

Where salary offers are based on personnel shortages or surpluses, it is important to be aware that the condition may be regional or temporary. Comparisons of teaching salaries, for instance, are meaningless without appropriate adjustment for regional differences: Idaho teachers in all disciplines could obtain raises by acquiring employment in many other geographic areas.

Further, personnel shortages should determine only initial salary offers. Common sense and good personnel procedures dictate that it is not to the employer's advantage to maintain salary differentials between individuals of equal merit. To support unjustified differentials creates frustration and dissatisfaction not only in the slighted employee but in all others who recognize the situation also.

If employees perform the same work, federal and state law prohibits pay differential except that based on training, experience, or performance. Should a corporation hire different salespersonnel to market new cars, used cars, trucks, campers, and parts, the basic job is to sell, and salary differentials cannot be based on what the employee sells. Similarly, the basic occupation of teachers is to teach, and though salaries may vary according to how well they teach, preparation (degree) or experience, salaries may not vary by reason of what they teach.

State and federal employment laws, Affirmative Action court decisions, and the minimum wage law all establish the principle that employers may not exploit employees because they need work.

Personnel scarcity as a reason for hiring employees in certain occupations at high salaries is a short-lived factor. As soon as a need for computer technicians was recognized in the late 60's numerous schools were formed to train people. The field is presently overstocked and many of the training schools have folded. The same has been true at various times in other fields: the existence of employer needs quickly creates an employee surplus.

What implications do these facts have for the prospective employee?

First, it is unwise to prepare oneself exclusively for the first job. As Alvin Toffler (FUTURE SHOCK) and others point out, employment needs change rapidly and will change even more quickly in the future. With technological acceleration, jobs which exist when students enter college will not exist when they graduate; others which did not exist and for which students therefore could not train will come into being. As Thomas H. Patten, Jr. writes in MANPOWER PLANNING AND DEVELOPMENT OF HUMAN RESOURCES, a student should avoid a curricula which is too vocational or too first job oriented because most subject matter "eventually bursts into a number of underlying... liberal arts subjects" (p. 543).

Secondly, high salaries for initial employment is most obvious in highly specialized fields. As a "hit man" is better paid than the common enforcer, so the technician is initially better paid than the non-specialist. This condition is deceptive because frequently the technician cannot look forward to the advancement potential of the non-specialist and the high beginning salary reflects the need to provide an inducement into fields which limit opportunity.

One need only look through the OCCUPATIONAL OUTLOOK HANDBOOK (published by the U.S. Department of Labor-Statistics) to see that few fields are closed to liberal arts graduates. Alumni bulletins from various schools

chart the career progress of their grads: fifty of the male graduates of my class at a small college in Vermont have reported considerable successes in business just in the past few lists. Those who entered professional or educational fields have had similar success. The college offers only a liberal arts curriculum.

Why is this information not generally known? Because people in the liberal arts have been so busy training teachers that people have heard little about those graduates who enter government or business. Yet where marketability is a factor for employment except in the most technical fields, liberal arts graduates can compete with anyone and any initial differential is soon overcome by their ability to demonstrate their worth. "Marketability" is ultimately not just personnel needs which help determine beginning salary but continued performance which determines raises and advancement.

For the Record

Editor, the Arbiter,
The Buildings Committee
article that appeared on page one of last week's Arbiter was not written by me. David Frisinger

The Arbiter is published weekly by the Associated Students of Boise State University. The offices of the Arbiter are located on the second floor of the Student Union Building, Boise State University, 1910 College Blvd., Boise, Idaho, 83725.

Articles and letters to the editor will be accepted for publication is submitted prior to 3:30 Monday. All articles and letters to the editor must be typewritten and bear a legible signature.

- Editor John Elliott
- Consult. Ed. Geary Betchan
- Admin. Asst. Geanine Cope
- Asso. Ed. Katrina Brown
- Lay-out Ed. Barb Bridwell
- Copy Reader Kathie Brack
- Lay-out Assts. Debbie Choat
Melissa Spencer
- Ad Salesman Margo Hansen
- Ad Asst. Pat Pedersen
- Reporters Dave Frisinger
Frances Brown
Kristi Kitchen
Jon Adamson
Ron Wilper
James Hepworth
Bob Stephensen
- Photographer Milt Smith
- Artist Grady Myers
- Circulation Ashley Brinkley

Faculty formula for pay increase vetoed by Barnes, State Board

by Katrina Brown

BSU President John Barnes' recent decision not to follow the Faculty Senate's recommended formula when allocating money for the faculty's yearly pay increase has been upheld by State Board of Education officers J.P. Munson and Janet Hay. After lunching with Barnes in Boise Monday, they said they would not be ready to make a decision on the equalization policy before salaries for the coming year are set, and recommended an in-depth

study of salary levels campus-wide.

"The concept of equalizing pay across school lines is a major departure from the way things have been done traditionally," said Hay in a telephone conversation Monday evening. She doubted there was currently any State Board policy on this particular issue, but said that because the recommended formula is a major change which would affect the other institutions

of higher education in the state if implemented, the Board would need time to study it.

This news came as a blow to non-Business School faculty who expected a raise this year after the Faculty Senate recommended that university salaries as a whole be used to compute an average pay increase. Traditionally, salary increases have been awarded to schools on a percentage basis of their previous year's salary budget. This has kept salary levels high in some areas, most notably the School of Business, and low in others, like Vo-Tech, Health Sciences and the Library.

Barnes first announced his veto in a letter to senators dated April 16, and at their April 18 meeting, Senate Chair Frank Stark, who had discussed the matter briefly with Barnes, assured the Faculty Senate that the letter was "obviously the result of a misunderstanding." Because Barnes had mentioned in his letter that salary equalization across

school lines was not part of the affirmative-action guidelines and not a university-wide goal at other institutions, it was assumed that Barnes had interpreted the recommended pay increase formula and an amendment providing for university-wide efforts to equalize salaries over the next three years as a single proposal. Stark predicted that once Barnes had become familiar with the two separate proposals and conferred with Munson he might change his mind.

But Barnes didn't, or couldn't, and the Faculty Senate's recommendation will now be considered for possible adoption as State Board policy. BSU and other institutions will be surveyed to see what disparities in salaries actually do exist, and survey findings will be considered at the June State Board of Education meeting.

According to Janet Hay, however, the future is dim for university-wide salary

equalization. Predicting "many, many difficulties," she explained that a university is a much more individualistic body than a labor union, and must "retain the flexibility to attract top people with money. We can't look ourselves into a rigid method of allocating pay increases, or we may be heading into trouble."

Business prof elected treasurer

Boise State University faculty member Dr. Marvin Clark, chairman of the Department of Business Education and Office Administration, has been elected Treasurer of the Western Business Education Association.

Clark recently returned from the annual WBEA conference in Hawaii and was honored by his selection to the post.

The WBEA has members from eleven western states, Alberta, Canada; and Guam. BSU associate business professor Mrs. Helen Johnson is the outgoing secretary of the WBEA.



Boise engineer Joseph Felts, right, presents BSU student Gary L. Thornock a plaque recognizing him as the "1974 Outstanding Engineering Student" at a luncheon of the Southwest Section of the Idaho Society of Professional Engineers. (Photo by Frank Carr.)

BSU student named '1974 Outstanding Engineering Student'

Boise State University student Gary L. Thornock has been named the "1974 Outstanding Engineering Student" at BSU. The honor is bestowed by the Southwest Section of the Idaho Society of Professional Engineers.

An electrical engineering major, Thornock is a graduate of Boise

High School. He has maintained a GPA of 3.65 over the past two years, is married and the father of one child. He plans to complete his engineering degree at the University of Idaho.

Thornock was honored at a luncheon held Tuesday at the Kings' Table on State street.

Attention graduates

May graduation announcements are now available in the BSU Bookstore. Each candidate for graduation is entitled to receive two free formal engraved announcements which can be picked up from the Bookstore. Additional announcements may be purchased for 25 cents each.

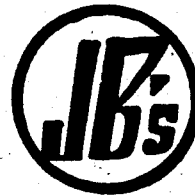
Caps and gowns for the May 19th graduation commencement for faculty and students must be picked up in the Big 4 room in the SUB the 16th and 17th of May from 8:30 am to 5:00 pm and Saturday the 18th from 9:00 am to 12:00 noon.

You got a letter from home and there was just a letter inside.

You owe yourself an Oly.

Olympia Brewing Company, Olympia, Washington "OLY"®
All Olympia empties are recyclable

INFLATION DEFLATOR



BIG BOY

FAMILY RESTAURANT

INFLATION DEFLATOR COUPON #1 BREAKFAST COUPON

FREE WITH EACH #2 BREAKFAST PURCHASED

Two Eggs, any style,
Hashed Brown Potatoes
French Toast,
Syrup and Butter.

Served 'til
11 a.m.
only
(With Coupon—
No Substitutions)

Sale Amount
Credit.....
Total
Date & Initials

BSU Void after May 5, 1974

INFLATION DEFLATOR COUPON #2 GOOD ANYTIME!

FREE BIG BOY HAMBURGER COMBINATION WITH EACH BIG BOY COMBINATION PURCHASED

ONE COUPON
PER ORDER
(No Substitutes)

Sale Amount
Credit.....
Total
Date & Initials

BSU Void after May 5, 1974

INFLATION DEFLATOR COUPON #3 INTRODUCTORY OFFER

SPAGHETTI DINNER- Reg. 1.95 \$ 1.25 ITALIAN STYLE



ONE COUPON PER ORDER
(No Substitutes)

GOOD ONLY WEDNESDAYS & SUNDAYS
Void after May 5, 1974

Sale Amount
Credit.....
Total
Date & Initials

BSU

Christensen urges involvement

Kit Christensen, ASBSU President, is urging everyone interested in becoming involved in student government to apply for positions on the boards and committees which interest them. The positions will soon be vacated, and it is important to fill them before next fall, according to Christensen. Applications are available at the SUB information booth or in the ASBSU offices.

The committees fill judicial, academic and service functions. Judiciary members review the constitutionality of the actions of the Senate, student committees, or individual students. Traffic Court magistrates recommend decisions on appealed parking violations.

In the academic area, the scholarship committee sets policy for awarding scholarships. Some of the other committees review and make recommendations on proposed college curriculum and study library policies and services. Another committee establishes a program for orienting new students to the BSU campus.

Service committees like the Public Relations Board help to

promote and publicize the activities of the students and the university as a whole. The Student Lobby provides valuable experience in working with real live legislators to meet the needs of Boise State. The Recreation Board governs the intramural and sports club programs, and the Student Health Advisory Board tries to keep tabs on the student-owned health center.

The committees listed above are only a few of those which have vacancies. Come to the ASBSU offices, meet your new officers, and find your niche.

Czech film on Friday

Milos Forman's FIREMAN'S BALL from Czechoslovakia is the foreign film to be presented Friday, April 26 in LA 106 at 8:00 pm.

The film concerns a group of firemen in a small Czech village who stage a ball in honor of their aged chief; but he is soon forgotten as the affair gives way to a series of catastrophes. Foremost among the disasters is the funniest beauty contests conceived.

Foreign student 'buddy system' to be initiated

A Foreign Student buddy system may be initiated at Boise State, according to Alan LeBaron, a member of the Academic Standards Committee. LeBaron said that the reason this action is being taken is because "The present policy (of dealing with foreign students) has not been sufficient in meeting foreign students needs."

LeBaron explained that students wishing to become involved in this would act as hosts to these students for as long as they wished. Hosts names would be placed on a list with Steve Spafford, Assistant Dean of Admissions. "Students may volunteer for a certain student or country represented for a roommate or as a host," LeBaron stated.

Those students wishing to volunteer should contact Fernando Auza, president of the Foreign Students Club, 385-1721 for further information.

Indian Institute to be held in May

Dr. Pat Ourada has announced the Third Annual American Indian Institute to be held on the BSU campus May 1-3.

Mr. Scott Tonemah will be featured as a guest lecturer on the Native American Peyote Culture. Mr. Tonemah, a member of the peyote cult, will speak on the Plains Indians. This lecture is being co-sponsored by the BSU Music Dept.

The Indian Institute is being sponsored by the History Dept. and Honors Program and is open to the public at no charge.

MAY 1
1:00 - 4:00 pm Educational

Discussions with members of the Idaho Inter-tribal Education Board.

MAY 2
12:30 pm Mr. Scott Tonemah, "Music of the Plains Indians" (Native Kiowa Songs) - Music Auditorium

7:30 pm "Native American Church - Peyote Cult" - Nez Perce Room, SUB

MAY 3
9:45 am Dr. Francis Haines "Indian Leadership - Myth or Reality" - Nez Perce Room, SUB.

1:30 pm "Snake River Indians and the Fur Trade" - Nez Perce Room, SUB.

termpapers termpapers

Quality, Originality Security
\$2.75 per page

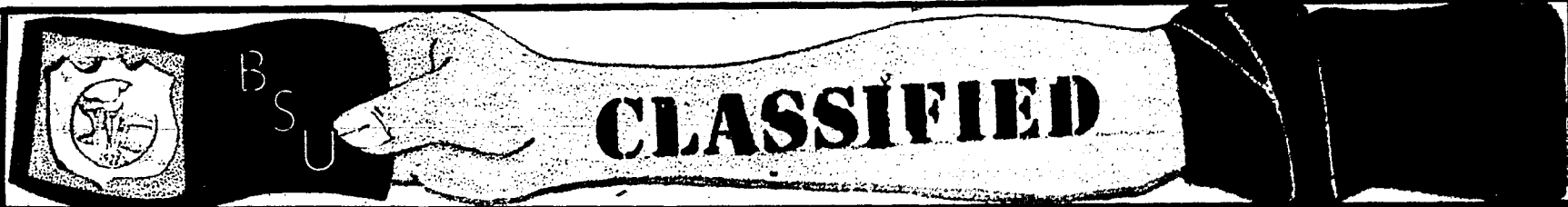
SEND NOW FOR LATEST CATALOG. ENCLOSE \$2.00 TO COVER RETURN POSTAGE

Hours: Mon-Fri 12 noon - 8 p.m.; Sat 12 noon - 5 p.m.

ESSAY SERVICES

57 Spadina Avenue, Suite 105
Toronto, Ontario, Canada
Telephone: (416) 366-6549

Our research material is sold for research assistance only, not as a finished product for academic credit



Guitar lessons: Rock, folk, blues. For information call 376-4240. Ted Bokich

6-string Lyle, folk guitar with case. New, cherry wood, plastic finish. \$100. Call Lynne at 385-3588.



FOR SALE: 67 Triumph GT-6. Mag Wheels, Good Condition - \$1095. Call 345-4848 or see at 315 Peasley after 5:00 pm.

"70" CHEVY PICKUP New paint, camper shell, carpet, upholstery 6 cy., 4 speed, low mileage Phone: 342-0750 8-12 am \$2,100.

1973 Pontiac Ventura Sprint! Still under warranty! Low, low mileage! Getting married - must sell. Call 385-1556 and ask for Karen 8-5 pm. (2 door, bucket seats, 3 speed)



FOR SALE: Koflach Ski Boots size 9 1/2 - \$25.00. See Walt Freestone, Chaffee Hall B-318 or call 385-1226.

People interested in having their belongings hauled to the Idaho Falls area at the end of school should contact Bob Clayton at 1020 Vermont (across from Vo-Tech building).



WANTED: Student to help with driving from Boise to New York or Massachusetts April 17-20. Call Dr. Chaloupka at 343-2818.

TOM THUMB PLAY SCHOOL

Monday through Friday, 7:00 to 6:00. Drop-ins welcome. Licensed personal care, 4 blocks from campus, 1317 Euclid 343-5314



Law school senior wishes to sublet small apt. within walking distance of capitol. 20 May to 20 August. Write Kevin Trainor 325 Lewis, Moscow, Idaho 83843.

Law student and wife need to rent or sublease a Boise apartment this summer or care for a home. Write Mike Schindele, 301 Lauder No. 101, Moscow, Idaho 83843.

RESEARCH MATERIALS ALL TOPICS

Write or call for your up-to-date mail-order catalog of thousands of outstanding research papers. Enclose \$1.00 for postage and handling.

WE ALSO DO CUSTOM-MADE RESEARCH

CAMPUS RESEARCH

1429 Warwick Avenue (Suite #1) Warwick, Rhode Island 02888 (401) 483-9130



Errol Flynn: If you bring over the turntable, I have a surprise for you. Love

Errol: disregard previous personal.



Molenaars Jewelers

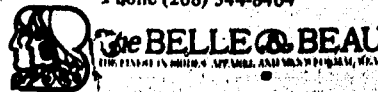
Student Discount and convenient Terms

1207 Broadway
Just three blocks south of Bronco Stadium



IDAHO'S LARGEST SELECTION OF THE LATEST STYLES AND FASHIONS IN:
Bridal Gowns; Bridesmaid Dresses
Mother of the Bride
Bridal Accessories
Men's Formal Wear
25 Styles and 15 Shirt colors to choose from

THE TOTAL SERVICE STORE
1003 Vista Avenue
Boise, Idaho, 83704
Phone (208) 344-8404



NO SERVICE CHARGE ON STUDENT CHECKING ACCOUNTS AT



ACROSS FROM BRONCO STADIUM

BOISE BLUE HAS IT... Idaho's largest selection of art supplies, engineering, drafting and craft supplies.

HYPLAR AND LIQUITEX ACRYLICS

BOISE BLUE PRINT
817 Barinock Ph. 343-2564
Open 9:00 am to 5:30 pm Mon. thru Sat.



Sawtooth Mountaineering

ROCK CLIMBING CLASSES EVERY SATURDAY. LIMITED TO 4! CALL 376-3731.

5200 Fairview Avenue Mini Mall

Renowned psychic Jeane Dixon speaks at BSU's final lecture

Jeane Dixon gave the final lecture of the BSU Lecture Series Monday, April 22, at the BSU Ballroom. Over 1000 people attended the talk. Mrs. Dixon gave many prophecies to the attentive audience concerning the present Watergate situation, the political futures of Richard Nixon and Edward Kennedy, and changes in the earth's appearance which will occur during the 1980's due to a comet tail's encounter with our atmosphere.

Before the lecture on Monday, this reporter talked to Mrs. Dixon at length and found some interesting characteristics in her personality. What follows is a brief observation of the woman who has "the gift of prophecy."

AT THE AIRPORT: 4:38 pm
Well, where is she? I'll bet we walked right by her. I'll see if she is downstairs, you guys wait here.

Hello, did Jeane Dixon come in on this flight?

Yes, but I believe she has already gone.

What was she wearing?

A black dress, with a black coat, and a black hat. Oh, yes, she had a red, white and blue ribbon tie. She was also carrying a brief case.

Was it black too?

Yes, I believe so...

How embarrassing. I bet we walked right by her.

There they are now. Down there by the luggage area.

Mt, but the weather is beautiful here. When I left Washington it was freezing. What time do you

have? 4:50? Let me see, what is the time difference between Boise and Washington? 3 hours?

No, I believe that it's two hours, Mrs. Dixon.

Oh, yes. Well, let's go on to the hotel. I have many questions that I need to ask you.

IN THE CAR: 5:00 pm

Do you all go to school here?

Yes, marvelous. Well, this is quite a city you have here. I noticed from the air that it is quite widely spread out. Oh, look, cows, right in the downtown area. My, My, Oh, My. Something should be done about that. Do you have animals? A dog, Mr. Hoppie? I must have a picture of the dog. What kind of dog is he? A great dane. My, my, my. This street reminds me of Las Vegas. Well, how large is the city? 100,000? Well...

AT THE MOTEL: 5:15 pm

My, aren't these nice rooms? Please, would you hang that up over there? Here let me show you how it works. Now sit down. I would like some good questions asked tonight. The last college I spoke at, I got questions like: How many babies am I going to have, will I do well in the stock market? etc., etc. Yes, will Kennedy ever be president? Will Richard Nixon be impeached? How about the comet Kahoutek? Well, I can't say anything about that comet, but I will say something about comets. THE EXORCIST? Have you seen it? I think the only people who should see that movie are Christian

Scientists, you know, people with strong minds and a good grasp on themselves and reality. Have you seen the movie?

Yes.

What did you think?

I thought it was a good movie, but I still question why they made it. It certainly isn't a movie for everyone.

No. I should say not. If you have a strong mind I am sure it is

very nice. You know, when I predicted the Kennedy assassination I saw a great coming together of the world. And if you will remember, that is just what happened. For ten days the world was unified through a mutual loss. Now if we could only have that again, a uniting of the world. I think that I shall talk to one of my friends, maybe Mr. H. L. Hunt. Perhaps he could find

something that would bring all of these wonderful college students together. With their youth and vibrance, maybe they could put an end to all of these horrible kidnappings, and murders and plots against the government.

You might be asked about kidnappings. Do you think Patricia Hearst is in with SLA? You might be asked about kidnappings. Do you think Patricia Hearst is in with SLA?

I think Miss-Hearst is a victim of circumstances. I see that she is involved, and knew something like this was going to happen, but I don't think she knew it was to be her. I see her as being involved from the outside; in other words, I think that she was on the fringes of the organization, and became too deeply involved, and now she can't get out. I think that she will be eventually released, but I don't think it is in the near future.

Mr. Dixon, we must be going.

Yes, it is now 6:00. You will be back at 7:15. How time flies. Please think about the idea of unifying the college students in this country, and let me know what you come up with. I think that if we are to save America, we must all be united toward a common goal, and I think the best place to begin is in the colleges of this country. Will you pray for it with me?

Certainly, Mrs. Dixon. We shall pray for it with you. Good evening.

Good evening.



Jeane Dixon spoke at this season's last lecture series Monday evening.

Your prof just assigned the \$24.95 textbook he wrote.

You owe yourself an Oly.

Olympia Brewing Company, Olympia, Washington "OLY"®
All Olympia empties are recyclable



Johnny Lister, nationally known astrologer, talked to Boise State dormitory students about their astrological signs Monday in the ARA Food Service.

★★★★! HIGHEST RATING! CROMWELL IS TOP DRAMA

"CROMWELL is a BIG ONE! Civil war, pageantry, battle, political contention—EXCITING AND TIMELY!"

"Rich and rewarding! Glowing with period and with pertinence! Enthralling!"

"CROMWELL is a smashing victory! An epic!"

"Colorful and totally absorbing epic!"

"A panorama of turmoil and pageant! Excellent battle scenes, flashing with cannon fire!"

in every respect—scope and magnitude and battle and action! The issues are politics and religion and the result is bloody Civil War!"

CAST: RICHARD HARRIS-ALBO GUINNESS, CROMWELL
ROBERT MORLEY-DOROTHY TUTIN-FRANK FINLAY
TIMOTHY DALTON-PATRICK WYMARK-PATRICK WAGNER
NATALIE SINGH-CHARLES GRAY-MICHAEL JAYETON
LIZ HUGHES-STEPHEN BOYDALL-ROBERTO GOMES
A FILM BY DONALD CRISP PRODUCED BY IRVING ALLERSON
MUSIC BY JOHN WILLIAMS

CROMWELL & IVANHOE
8 PM SUNDAY APRIL 28
BIG FOUR ROOM

BACK PACKERS! HIKERS HEADQUARTERS!

- Emergency Space Blankets \$1.88
 - Rock Picks
 - Gold pans
 - Mini-tube Tents \$1.49 Up
 - Dehydrated Foods & C Rations
 - Dacron II Hikers Sleeping Bags
 - Mini Ruck Sacks \$2.49
 - Surplus Alum. Frame Pack \$3.88
- #### BACKPACKERS
- Down filled Sleeping Bags
 - Back Frames" \$3.88 & Up
- #### WOOL CPO STYLE SHIRTS
- \$7.88 to \$10.95

- #### SAVE ON WORK CLOTHES
- Navy Style P-coats \$14.95 Up
 - GI Field Jackets \$5.95
 - Wool "Ike" Jackets \$2.95
 - Ejannel Plaid Shirts \$5.88
 - Wool Air Force Overcoats \$2.95
 - Leather Look Bomber Jackets \$15.88
 - Boots, GI, New Black \$13.88
 - Viet Nam Boots \$12.88 pr.
 - Cahart Work Clothing

- #### SEAFARER PANTS
- Blue Denim Bell-bottom Pants \$7.49 to \$7.88
 - Surplus Wool Pants . . . \$3.88-6.88
 - Navy 13 Button Bell Bottoms used - \$5.95 new - \$9.95

Koppels & Brownsville
The Fun Spot to Shop
Next to Larry Barnes Chevrolet
20th February, Boise, Twin Falls

CALENDAR

THURSDAY, APRIL 25, 1974
 All-Day Cultural Unity Fair - Julia Davis Park
 7:30 pm ASBSU Union Board of Governors - Teton Room, SUB
 8:00 pm Transcendental Meditation Lecture - Senate Chambers, SUB
 8:15 pm "As You Like It" Subal Theatre

FRIDAY, APRIL 26, 1974
 All Day Cultural Unity Fair - Julia Davis Park
 7:30 pm Campus Crusade for Christ, College Life Lecture - Senate Chambers, SUB
 7:30 pm Boise State Rodeo - Simplot Stadium, Caldwell, Dance Follows
 7:30 pm - 10:00 pm Extended hours for BSU Library
 8:00 pm Foreign Film "Fireman's Ball" LA 106
 8:15 pm "As You Like It" Subal Theatre
 8:15 pm Senior Recital Piano - Lissa Nishitani - Music Aud.

SATURDAY, APRIL 27, 1974
 8:00 am Bike Hike sponsored by the National Association for Retarded Children - Capital High
 1:30 pm & 7:30 pm Boise State Rodeo - Simplot Stadium, Caldwell - Dance Follows
 1:00 pm IRON - Idahoans for the Removal of Nixon Public Rally - Capital Bldg.

SUNDAY, APRIL 28, 1974
 10:00 am - 10:00 pm Extended hours for BSU Library
 2:00 pm Senior Recital Percussion - Gary Kautenburg - Music Aud.
 8:00 pm Pop Film "Ivanhoe & Cromwell" Big 4, SUB
 8:15 pm "As You Like It" Subal Theatre
 8:15 pm Composition Recital - Bob Jetter - Music Aud.

MONDAY, APRIL 29, 1974
 8:00 pm David Oravez Art Show Reception - Boisean Lounge, SUB
 8:15 pm "As You Like It" Subal Theatre
 8:15 pm Senior Recital (Composition) Kevin Kircher - Music Aud.

TUESDAY, APRIL 30, 1974
 9:30 am Campus Crusade for Christ Day of Prayer - Clearwater
 11:15 am & 7:30 pm Prayer Rally at First Christian Church - All Students Welcome.
 5:00 pm High School Counselors Workshops - Bannock and Owyhee, SUB
 8:15 pm "As You Like It" Subal Theatre

WEDNESDAY, MAY 1, 1974
 8:15 pm "As You Like It" Subal Theatre



Seniors schedule recitals, College of Idaho Musicales performs 'Cosi Fan Tutte'

by Frances Brown

Two senior recitals have been scheduled for this week by graduating seniors of the BSU Music Department. The public is invited to attend without admission charge.

Lissa Nishitani, daughter of Mr. & Mrs. Tom Nishitani, Nyssa, will present her senior piano recital, Friday, April 26 at 8:15 pm in the BSU Music Auditorium.

Her program will include compositions by Chopin, Debussy, and Beethoven. Lissa is a student of Carroll J. Meyer and she will earn a Bachelor of Music degree in Performance.

The first solo student percussion recital in the BSU Music Auditorium will feature Gary Paul Kautenburg, Sunday, April 28, at 2 pm.

Kautenburg is graduating with a Bachelor of Music Education degree. His recital program will utilize the full range of percussion instruments in conjunction with piano, guitar, and tape recorders in a wide range of musical settings.

Kautenburg is a member of the Boise Philharmonic, Boise City Band, as well as a performer with numerous other area ensembles.

In 1973, he received the Idaho Federated Music Clubs Trust Fund Scholarship presented to the outstanding musician in statewide auditions.

As a student of Dr. John Baldwin, Kautenburg began his studies at the University of Wisconsin at Oshkosh and when Dr. Baldwin transferred to the BSU faculty, Kautenburg transferred to Boise State.

Thursday evening, April 18, I journeyed to Jewett Auditorium on the College of Idaho campus, Caldwell to observe the dress rehearsal of Mozart's "Cosi Fan Tutte" (All Women Are Like That) sponsored by Caldwell's Thursday Musicales.

The opera setting is in Naples, Italy and the production is performed with a minimum of scenery, suggestive of the locale.

Sylvia Hunt is the pianist and Barbara Atteberry furnishes harpsichord music which is most appropriate for the time and place of this musical.

Mozart's music is melodious and light-hearted, spring-like and tinkly, symbolic of the young loves portrayed in the opera. The sparkling overture prominently states the theme and title of the opera.

Randy Krawl of Boise, is stage director and Estyn Goss is the vocal director and sings the role of Ferrando, one of the lovers. Of the six performers in the cast, the others are: Myrna Goss and Geri Tucker as Dorabella and Fiordiligi, respectively, Brian

Atteberry as Guglielmo, Ed Simmerman of Boise as Don Alfonso, and Carolyn Morris, of Boise, who sings the role of Despina, the maid and also acts the parts of the doctor and the notary.

The six soloists sing their roles aptly and harmoniously and their vocal tones blend beautifully in chorus. The excellent singing is reinforced by good dramatic acting. Geri Tucker and Carolyn Morris rate an extra star for their dramatic portrayals.

It is noteworthy to find six excellent artists performing so ably, and the musical rendition of Mozart's delightful music was especially enjoyable.



Boise State University student Gloria Garatea is the recipient of a \$500 scholastic award for the 1974-75 academic year. The award is a memorial scholarship sponsored by the family of Iendra Letemendi.

Ba'há'í Faith - You are all the fruit of one tree and the leaves of one branch.

COME TO INFORMATION DISCUSSIONS HELD EVERY FRIDAY EVENING 7:00-9:00 P.M.

FOR MORE INFORMATION CALL 434-7122

EVERYONE WELCOME

'As You Like It' opens tonight

William Shakespeare's comedy, "As You Like It" will begin its ten day series tonight in the Subal Theatre. Pictured above are Becky Oates, who plays Celia, Elizabeth Streiff, playing Rosaline, and David Six, who plays Touchstone. This is the last production for the 1973-1974 Subal Theatre Season.

Cliffs Notes
 America's Most Asked For Study Aid. Guides you to fast understanding of more than 200 plays and novels.

Fastest Catchup in town!

Cliffs Keynote Reviews
 Cliffs Keynote Reviews give it to you straight...and fast. Self-Tests let you pinpoint where you need help the most...lead you right to the basic facts and additional information you need to shore up your weak spots. Make every minute count - get the Cliffs Keynote you need for efficient, profitable reviews. Available for 20 major subjects.

Cliffs Course Outlines
 Helps you keep up - even ahead - as you study required basic courses. Keyed to major textbooks. Helpful questions, essay topics and bibliography.

Professional Education Series
 A must for education majors. The first series to relate educational theory to the realities of what's happening now in education. Now covering more than 20 major topics.

Get them at your booksellers

Cliffs NOTES

Broncos host All Idaho Collegiate meet

An Idaho collegiate track and field champion will be crowned Saturday at the Idaho Collegiate track meet hosted by Boise State. The meet will begin at 12 noon Saturday, April 27 with the field events. The steeplechase will begin the track events at 12:30 pm in Bronco Stadium.

Teams slated to compete are host Boise State University, Idaho State, the University of Idaho, Ricks College, the College of Southern Idaho, the College of Idaho and Northwest Nazarene College.

The Broncos have defeated the University of Idaho twice this year in track competition. The first time was at Washington State by an 87-70 score and the second time was in Moscow by a 73-51 score.

The Broncos now stand 4-1 in dual meet competition after defeating the University of Nevada Reno 85-69 last Saturday in Boise. The win by the Broncos snapped a 34 consecutive dual meet win string by the Wolf Pack.

It was a record-setting day for Bronco jumper Gerry Bell. The senior from Calgary, Alberta leaped 51-11 in the triple jump and 24-7 3/4 in the long jump. Both marks are new school and personal best by Bell but he finished second in both to UNR's Iranian champion Fred Asef.

Saturday's meet will have some great "duals" especially in the sprints. Idaho State's Carl Lawson has a 9.4 in the 100 while Boise State's two sprinters Sma Jenkins and Karl Bartell have 9.5 times. Another Bengal sprinter Peter Amarteifio has a 9.5 while Ricks' Alan McEwan, Byron Porter from Idaho and Steve Williams from Idaho State have 9.7's.

Lawson has the top 220 time with 20.7 while Amarteifio has a 20.9 and BSU's Sam Jenkins has posted a 21.3. Bartell has a 21.4 and Brad McKenzie from Idaho has a 21.5.

Barry Miller from Idaho State has a time of 47.8 in the 440 and he is followed by Larry Stark from Boise State with a 48.1. Bruce Cooper from the College of

Southern Idaho has a time of 49.3 in the 440.

880: Bud Courture (ISU), 1:53.0; Dan Knighton (BSU), 1:53.8; Dick Huling (NNC), 1:53.5; Al Ramach (I), 1:53.9; Ben Hitson (Ricks), 1:55.9.

1 Mile: Jerald Jones (ISU), 4:05.3; Al Ramach (I), 4:10.0; John Brooks (ISU), 4:11.6; Jim Bonnell (BSU), 4:18.2; Steve McCalley (CSI), 4:21.0; Steve Hills (NNC), 4:25.5.

Three Mile: Vince Capell (ISU), 13:57.0; Jim Bonnell (BSU), 14:20.2.

High Hurdles: Ken Carter (BSU) and Ward Kinsman (ISU) 14.3; Larry Comer (ISU), 14.4; Bob Caldwell (Ricks), 14.9.

440 Hurdles: Larry Comer (ISU), 52.4; Ken Carter (BSU), 52.8; Mike Bennett (BSU), 53.8; Tony Bolden (ISU), 54.6; Rollie Woolsey (BSU), 54.7; Bob Caldwell (Ricks), 57.5.

Steeplechase: Bob Walker (BSU), 9:01.2; Shane Sorrey (I), 9:22.0; Dave Lockman (BSU), 9:55.0; Bob Guerin (ISU), 10:03.8.

(continued on pg.8)



Gerry Bell, senior from Calgary, set school records for the triple and long jumps in Reno last Saturday.

BSU football team shaping up well

The Boise State University defense has a problem that many other teams would love to have. That problem — too many good ball players and no place to put them.

The Broncos will be returning almost everyone from last year's team which held such powers as the University of South Dakota and Cal Poly (SLO) to only 10 points each and some new junior college transfers won't hurt the defensive picture for the 1974 edition of the Broncos.

Charlie Dine, the defensive line and middle linebacker coach, feels that this area is one of the strongest on the team. "We have so much depth at each spot and so many fine young men that it is really hard to say that any one man is a starter. It is a great spot to be in, not having to worry about one man trying to replace another spot due to an injury." Some of the top returnees are Ron Franklin, Ron Davis, Ken "Chico" Mills and Mark Clegg. These four saw considerable action for the 1973 Broncos and again lead the pack in starting roles.

At the left defensive end will be Mills or JC transfer Pete Poumele. Poumele is pushing Mills and both are rated even. Left tackle would have to be given to the 609, 260 lb. Franklin, who starred there for the Broncos last year. He is being pushed by Vaa Afoa. Right tackle is considered a toss-up between upcoming sophomore Chris Isorn

and JC transfer Saia Misa, Jr. Right end is wide open with Clegg and JC transfer Mark Humphries doing the battling. Middle linebacker is well manned with the returning of Davis, Rocky Patchin and Kauhi Hookano.

Others vying for jobs on the defensive front will be Ron Welnel and Barrett McClure at tackles and Brad Moulton at end.

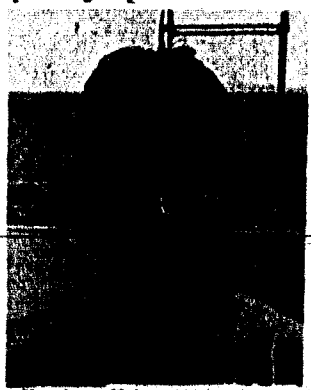
The defensive backfield and outside linebacker positions have basically the same "problem" as the other defensive spots, many good players and not enough room, according to coach Steve Buratto.

Safety would have to be considered his most sought-after spot. Buratto has four solid candidates bying for the job and two are pushing for recognition. The four are senior Pat King, a starter from 1973; junior Clint Sigman; senior Jim Meeks and JC transfer Jeff Tryon. The two athletes pushing the other four are Glenn Lee, a JC transfer and Jeff Hickey, a sophomore from Boise's Borah High School.

There are three fighting it out at cornerback. Rollie Woolsey, who played there last year is one of the leading candidates but is out for track at the present time. Also in the running is Mike Campbell and Gary Rosolowich. Rosolowich, an upcoming sophomore, is from Winnipeg, Canada. At outside linebacker, returnees Loren Schmidt and Gary Gorrell are heading the list. These men are being pressured by Larry Bearg, a freshman from Boise and Barry Munson, a JC transfer.

Others gunning for defensive spots are Ned Smith and Jeff Hickey at cornerback and Mike Roman and Dave Fox for the linebacker positions.

Last year's Bronco defense was second in the Big Sky in total defense, second in rush defense and third in pass defense. Coaches Dine and Buratto will be shooting for that number one spot this coming fall.



Kendra Falen led the BSU Women's Track team to victory at the recent track meet in Logan, Utah.

Big Sky action for BSU baseball Broncos

The Boise State baseball Broncos return to Big Sky Conference action this weekend with a three-game series against the Idaho Vandals in Moscow Saturday and Sunday.

The Broncos will have a single game Friday against Lewis-Clark in Lewiston and then move north to Moscow for a doubleheader at 1:30 pm (PDT) Saturday and a single nine-inning clash with the Vandals Sunday at 1:30 pm (PDT).

"We have to sweep the three-game series with Idaho to stay in any type of running for the northern division title," commented head coach Ross Vaughn.

The Broncos are 14-14 on the year and 2-4 in the league. The Idaho Vandals are 18-16 on the season and are 3-3 in the Big Sky. Idaho has beaten Boise State twice and took one game of a three-game series last weekend

BSU tennis team goes to Invitational in Ogden

It will be a busy week of tennis action in the State of Utah for the Boise State University squad. They play Utah State, Wednesday, April 24, and then join a six-team field for the three-day Weber State Invitational in Ogden, Thursday, Friday and Saturday.

Other teams are host Weber State, Montana, Montana State, Nevada Las Vegas and the University of Idaho.

The Broncos now stand at 5-1 in dual meet competition and will be playing one of the teams which beat them last year in Utah State on Wednesday. Last year the Broncos and Aggies split home and home with both matches decided on a 5-4 score.

Last year's Weber State Invitational was won by the Idaho Vandals, but coach Dan Owen's Broncos have beaten Idaho twice this year, 6-3 both times. The Broncos have not met Las Vegas this year but coach Dan Owen said he has heard that they are a fine team.

from the Gonzaga Bulldogs.

The Vandals are 2-1 against Boise State, having beaten the Broncos 3-2 and 10-5. Boise State's one win was by a 12-3 score. Coach John Smith has some big bats in Moscow in catcher Alan Head who is hitting .436 and first baseman Mike Ruscio who is hitting .367.

The leading hitter for the Broncos is first baseman Karl Benson at .341. He is followed by third baseman Garry Allen at .340 and shortstop Kent Peterson at .333.

Coach Vaughn has indicated that he will start Paul Levar (2-3,

2.60 ERA), Scott Hunsaker (4-3, 2.90 ERA) and Nick Mitchell (4-3, 5.63 ERA) against Idaho. The Vandals will counter on the mound with three of four hurlers. They are Tim Kampa (6-2, 2.45 ERA); Steve Williams (6-3, 1.57 ERA); Phil Knott (1-2, 3.54 ERA), and Ron Barnes (5-2, 4.50 ERA).

"Our defense is getting better," coach Vaughn said. "We are playing better because our fielders have more confidence and are being more aggressive in the field. We have had to move players to new spots and they are coming along fine."

BLITZ WEINHARD COMPANY
WILL BE INTERVIEWING FOR
NEXT YEAR'S CAMPUS REPRESENTATIVE ON WEDNESDAY, MAY 1. APPLICANTS MUST BE 19 YEARS OLD BY FALL SEMESTER, HAVE OWN TRANSPORTATION, AND BE ACTIVE IN ACADEMIC OR EXTRACURRICULAR ACTIVITIES.

INTERESTED PERSONS SHOULD CONTACT CAREER AND FINANCIAL SERVICES, ROOM 117 IN THE ADMINISTRATION BUILDING.

BSU track team beats University of Nevada at Reno

The BSU track team won another exciting dual meet against the University of Nevada at Reno this weekend. The victory on the part of the Broncos broke Reno's 34 meet winning streak.

Although the entire team put out an outstanding performance it is the opinion of Dave Lockman, BSU distance runner, "It was the performance of Gerry Bell that really got us psyched up." Lockman went on to say that if it were not for the excellent performance of Bell the Broncos probably would not have won.

Some of the best performances, other than Bell's, who re-established himself as the Canadian record holder in the triple jump, were posted by Sam Jenkins and Karl Bartell in the 100-yard dash with times of 9.5 and 9.6 respectively.

An amazing factor in the victory was the absence of Bob Walker in the steeple chase. This was due to an injury suffered in that event when the Broncos competed against the University of Idaho at Moscow. But Walker is recovering and is expected to compete in the All-Idaho Track Meet this weekend in Bronco Stadium.

STEEPLECHASE: 1. Hans Menet, UNR, 9:39.5; 2. Dave Lockman, BSU, 9:55; 3. Gilbert Gonzalez, UNR, 9:55.8.

440 RELAY: 1. BSU, 41.6 - Karl Bartell, Larry Stark, Rollie Woolsey, Sam Jenkins; 2. UNR, 43.5

SHOT PUT: Larry David, BSU, 52'10 1/2"; Doug Smith, UNR, 49'3"; Richard Bass, UNR, 48'4".

HIGH JUMP: 1. Jeff Schroeder, BSU, 6'4"; 2. Joe Tyler, UNR, 6'2"; 3. Mike Bennett, BSU, 5'10"

MILE RUN: George Hernandez, UNR, 4:25.8; Domingo Tebaduiza, UNR, 4:27; Jim Bonnell, BSU, 4:32.4

LONG JUMP: 1. Fred Assef, UNR, 24'9"; 2. Gerald Bell, BSU, 24'7 3/4"; 3. Joe Tyler, UNR, 22'9 3/4"

Idaho collegiate meet

(continued from pg. 7)

High Jump: Jeff Schroeder (BSU), 6-8 1/2; Mike Bennett (BSU), 6-8; Bob Caldwell (Ricks), 6-5.

Long Jump: Dick Tullock (ISU), 24-9 1/4; Gerry Bell (BSU), 24-7-3/4; Wes Remaley (C of I), 22-4 1/4

Triple Jump: Gerry Bell (BSU), 51-11; Emmanuel Ebo (ISU), 47-10; Steve Wolfe (NNC), 48-4 1/2.

Pole Vault: Stan Andrew (BSU), 15-4; Bill Bramlette (I) 15-0; John Urrutia (ISU), Mike Hamilton (I) and Brad Glass (BSU), 14-6.

Discus: Craig Byington (ISU), 166-8 1/2; Henry Mago (BSU), 164-10 1/2; Doug Fisher (I), 160-4.

Shot Put: Mark Crull (I), 55-7; Larry David (BSU), 53-4; Craig Byington (ISU), 52-0.

Javelin: Craig Byington (ISU), 212-2; Glenn Sparks (BSU), 196-0; Steve Ostrander (C of I), 198-7.

Intercollegiate rodeo April 26, 27

The eighteen members of the BSU Rodeo Association will hold an intercollegiate rodeo April 26-27 at Simplot Stadium in Caldwell.

Fifteen colleges and universities from Utah and Idaho will perform starting Friday at 7:30 pm and Saturday at 1:30 pm.

BSU will feature Jim Femrite in bareback riding and Bruce Fox in the saddle bronc riding category. Jim Femrite took second place in the bareback riding last week in the rodeo at St. George, Utah, and last year he placed fifth in the Rocky Mountain Regional in the same event. Bruce Fox placed fourth in saddle bronc riding at regionals last spring.

Two of the girls on the team, Jamie Stillwell and Karen Smith, should give their competitors a run for their money.

The top schools at the rodeo will be Weber State College,

Ricks, and ISU.

The team's record for the season isn't all that hot and the main reason for this is because this is the first year in a long while that the university has had a complete team.

Dr. Barnes, BSU president, was very helpful in getting funds for the team. Every member of the team traveled an average of 9,000 miles a year going to various rodeos. Besides their lodging and travel expenses the university puts on a major rodeo each year.

On most campuses the rodeo team is sponsored by the Athletics department, at BSU the outdoor activities fund picks up some of the costs and the club members pick up the rest.

At present the Boise Area does not have rodeo grounds so the team is forced to practice in Caldwell. This is quite costly because stock charges are approximately \$3.00 a run.



BSU Rodeo Association will hold an intercollegiate rodeo April 26-27.



SAVE \$20

ON A PRICE FIGHTING MACHINE!

10 SPEED RACING BIKE



\$79⁹⁵

- DELUXE SHIMANO DERAILLIER GEARS
- CENTER-PULL CALIPER HANDBRAKES
- STEM MOUNTED SHIFTING LEVERS
- DELUXE PADDED RACING SADDLE



48" SECURITY BIKE CHAIN & LOCK
REG. \$4.00 **\$2.47**

*Heavy duty chain is enclosed in clear vinyl
*Quality Western combination lock.



BICYCLE SADDLEBAGS
REG. \$8.98 **\$6.99**

*Rugged 100% nylon with weather proof covered zippers
*Four pouches
*Attaches to rear frame



NYLON DAY PACKS
REG. \$5.95 **\$3.99**

*Perfect for cycling and hiking
*Complete with padded shoulder straps, drawstring top, and zippered front pouch.



NYLON BIKE SEAT POUCH
REG. \$4.19 **\$2.44**

*Heavy duty nylon bag attaches to bike seat
*Webbing straps with buckle closures



OPEN WEEKDAYS 9 AM TO 6 PM SUNDAYS 10 - 6

Corner of Fairview & Curtis in Boise