

9-19-1969

## Arbiter, September 19

Students of Boise State College

---

Although this file was scanned from the highest-quality microfilm held by Boise State University, it reveals the limitations of the source microfilm. It is possible to perform a text search of much of this material; however, there are sections where the source microfilm was too faint or unreadable to allow for text scanning. For assistance with this collection of student newspapers, please contact Special Collections and Archives at [archives@boisestate.edu](mailto:archives@boisestate.edu).



## Josh Jr. Arrives

Josh White Jr. arrives here on Sept. 23 to perform his one man, two hour show.

This young, distinguished "Total Entertainer" has been playing leading colleges everywhere. That he is constantly in demand is a tribute to his versatility and talent. Josh adds more fans to the ever-growing list whenever and wherever he appears—not with gimmicks or blaring amplifiers, but with tasteful variety entertainment.

What is Josh White Jr., in Concert? He is a talent who is able, standing alone on a stage, to combine his magnificent voice in song, with uproarious comedic material. Add to this the magic ingredient, charm, and it all spells excitement. Josh White Jr.'s concert presentation is exciting to watch, exciting to listen to and exciting to be a part of!!

Not only is he in demand as a concert performer, but he has become a sought after television personality as well. You may have seen him on the Steve Allen Show, the Donald O'Connor Show or the Mike Douglas Show. You will be seeing him on many major TV shows, as soon as they can be fitted into his busy schedule... And busy he is!

The concert will be held at the BSC SUB Ballroom at 8 p.m. The show is open to the public, and admission is \$1.

### Alpha Kappa Psi slates

#### 'Moses Lake in concert'

Alpha Kappa Psi will present the first concert of the season "Moses Lake in Concert" tomorrow, Sept. 20 in the gym. Two performances are scheduled at 3 p.m. and 8 p.m. Admission is \$1.25 per person at the afternoon performance and \$1.50 in the evening.



**JOSH WHITE JR.**, who is a top selling recording personality for United Artists will appear in the SUB Ballroom, Tuesday, Sept. 23. The admission is \$1 per person, with the public invited.

### Timely TV special on next Thurs.

A CBS-TV Special "Who Killed Lake Erie" will be presented Sept. 25 at 9 p.m. on KTVB, Channel 7. Dr. Gilbert Wylie associate professor of biology, announced today.

The documentary, Dr. Wylie noted, is a study on man's environment near Lake Erie and is very timely for anyone interested in the environment of the world. The program is mandatory for all of Dr. Wylie's classes and should be entertaining as well as educational.

## BSC gets computer system



A COMPLETE LINEAR PROGRAMMING SYSTEM was presented to Boise State College President Dr. John B. Barnes, left, by C.A. Haverly, President of Haverly Systems Inc. The New Jersey based firm develops computer programs for business and industry throughout the world. Boise State College is the first educational institution to receive a Haverly designed linear programming system. Use for the system can lead to development of a operations research service for the BSC School of Business and Public Administration which in turn can be put to practical uses by Idaho industries. Members of Boise Cascade and Ore-Ida Foods Operation's Research groups have agreed to provide training and research necessary to implement the linear programming system on the BSC computer.

## Goldini's "Servant"

### in final performances

The final two performances of Goldoni's "Servant of Two Masters" will be seen in the Boise State College Subal Theatre Friday and Saturday nights. The opening production of this year's drama season at BSC is a fast paced, lively, action comedy. It was seen during the summer by over 5,000 people and is the most widely seen of any BSC drama production.

During the summer it was taken to Weiser, McCall, Twin Falls, Grangeville, Caldwell, to the Boise Children's Home, the Boise Veteran's Hospital, as well as numerous performances in Julia Davis Park. Audiences of all ages delighted in the slapstick farce and intellectual wit of the ancient Italian play. The curtain time for the final two

performances is 8:15 p.m. Reservations may be made by phone or in person at the Subal box office.

"Servant of Two Masters" was completely restaged for this fall with new action, stage business, and characterization. The effect, according to director Ron Krempetz was to complete an ensemble production in which the walk-ons were as interesting as the lead.

Following Saturday's production, "Servant" will be available for touring throughout Idaho via the drama department's new truck-mounted stage which duplicates exactly the Subal Theatre. The touring truck is designed to bring drama into locations where suitable stage facilities are lacking. "Servant" and other BSC drama productions can also be performed on various stages. For information about touring, contact John Warwick, chairman of the Communication Arts Department at Boise State.

The next production in the Subal Theatre will be Shakespeare's "The Tempest."

## Navy team recruits

A Navy Officers program team will be on campus Sept. 25-26. Information, without obligation, will be available on all programs leading to a commission as an officer in the United States Navy.

The air, surface, sub-surface and shore programs available can be discussed with the team of air and line officers and enlisted personnel. Pre-medical, Dental, Nursing, Dietitian, Physical and occupational therapists, and Law majors should check with the information team as to the best means of satisfying their military obligation.

Most programs require a Baccalaureate Degree but men students are permitted to apply up to nine months prior to graduation. Early application and acceptance would mean as much as \$1800 extra during three years of active commissioned service.

Students who are unable to meet the team should write to the Naval Aviation Information Office, U.S. Naval Air Station, Seattle, Washington, 98115, or to The Office of Naval Officer Procurement, 520, S.W. Morrison Street, Portland, Oregon 97204, for information.

## ASB Senate election set next Friday

Student Senate elections will be held Sept. 26, ASB Vice President Jim Tibbs announced today. According to Tibbs, all petitions are due Sept. 19, and the week of Sept. 22-26 is reserved for campaigning.

Positions open for election include four class presidents and 12 school senators. The representation of the schools will be apportioned according to the enrollment in each school, Tibbs added.

A campaign assembly will be held the day prior to the election, Sept. 25, with each candidate presenting a speech. Classes will be dismissed during the assembly.

## Enrollment increases over 25%

Enrollments at BSC and other Idaho colleges and universities have increased dramatically over the 1968-69 school year, according to the Executive Director of the Idaho State Board of Education.

Dr. Donald F. Kline noted Monday the statistics gathered by his office and said "complete and final enrollment figures for Idaho's public higher education institutions would not be available for several days due to late registrations and the differences between enrollment periods at the several institutions."

According to Kline, some 6,728 students have enrolled at Boise State College. Of this number 3,221 are first-time entering students. In addition, over 340 persons are taking vocational-technical courses at BSC.

The 3,221 freshman students make up the largest entering class in the history of the college. Late registration continues at BSC until Sept. 17.

North Idaho Junior College, Couer d'Alene, also has enrolled the largest class in the history of the college 1,050. Lewis-Clark Normal School reported one of its largest enrollments also, 1082.

Nearly 6,000 students have enrolled at the University of Idaho. That does not include those people who are expected to enroll in the National REactor Test Center at Arco, those who are not expected to enroll in night classes at Moscow, nor those special students whose programs prevent them from registering when incoming students complete the process.

At Pocatello, Idaho State University has enrolled in excess of 6,100 at the close of business Monday.

The College of Southern Idaho (junior college) reported a total of 235 vocational enrollees, 317 special students, and 1,135 academic students for a total of 1,687.

## Bogart-Hepburn flick leads off Friday films

"The African Queen" begins the 1969-70 movie series at BSC on Friday, September 19 at 8 p.m. in the Liberal Arts auditorium (LA 106).

This American film in color stars Humphrey Bogart and Kathryn Hepburn. Bogart won the Academy Award as best actor in this film. Readers of the Los Angeles Times voted this picture a favorite American movie. The director, John Huston, puts into motion the screen play by the well-known James Agee.

The story centers around an adventure during World War II, a trip in a small boat called "African Queen", which has been sent to destroy explosives of the German army. A lively conflict theme is portrayed by the boat captain Bogart and the missionary Miss Hepburn.

The river in Africa, the wild animals and the danger posed by the German army set the stage for an action movie that is full of suspense.

# LETTERS TO THE EDITOR

## Registration poses problem to student

Editor, the Arbiter:  
Dr. John Barnes,  
President  
Boise State College  
Dear Dr. Barnes,

I just went through a very harrowing experience.

### REGISTRATION

After going to BSC for a year-and-a-half I assumed that all paperwork would be in order, and that registering for classes would be short and simple. Based on this assumption I asked my wife to take care of it for me.

One hour after I presumed I had been registered my wife called me. She had been through several lines, and finally ended up in the admissions office looking for a paper that wasn't there and which wasn't needed.

I took over at this point and managed to complete the whole antiquated process in another forty-five minutes. Dr. Barnes, I resent having to fill out the same information on a handfull of IBM cards, the same information on each card, and the same information each time I register for classes.

For a college which has both a vocational data processing program, a two-year D.P. degree program, and a number of upper-division classes in data processing, to be saddled with such an outmoded system is idiotic. It is expensive, and is a waste of time for both student and faculty members.

yours,  
Jack vanLuik, Jr.

## SUB Grill should remain open

Editor, the Arbiter:

After the conclusion of a late evening class on Monday, Sept. 15, I decided to eat a sandwich at the BSC Student Union before going home. Last year, the SUB Coffee Shop was open most evenings, and one could get a quick hamburger before returning to the library to study, or going home, or work.

I found the coffee shop was open and tried to order a hamburger, but found that the grill was not open. The cashier said that the coffee shop only served cold sandwiches during the evenings, instead of having the grill open.

I ask that Saga Foods open the grill section of the SUB in the evenings, as many students have late afternoon classes and for students who want a cup of coffee before going to a night class. At the present time, the Coffee Shop closes at 4 p.m. and reopens from 7-10 p.m. in the evenings. Cleaning is usually done at this time from 4-7 when the SUB should be open to serve the students. Perhaps this cleaning could be scheduled at a later time.

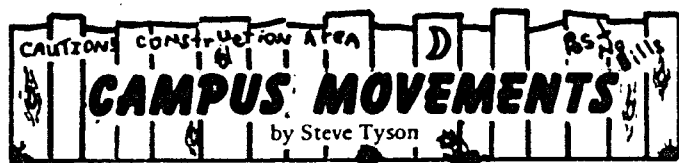
There has been talk of how apathetic the BSC Student is. Since the majority of the students at BSC commute to the campus, the closing of the student union alienates them from the campus. If an athletic contest is scheduled for an evening, the student that commutes from any distance is forced to leave campus to eat, and often doesn't return. If he waits for the contest to start, there is nothing to do, and he often drives the streets of Boise looking for something to do.

Perhaps this can be changed. Perhaps the SUB could remain open and have a cook to prepare more than cold sandwiches. Maybe the alienation from the campus can be stopped. At least let's hope so.

Sincerely,  
H. Edward Wright



LATE REGISTRATION LINES



And how many years have you practiced being yourself? Observations made in Campusology lab 101 in the SUB provide substantial evidence that the surprising majority of BSC students who frequent the SUB are in the process of trying roles to see if any may be found to fit their own personalities (y?).

A valid self-image is psychologically one of the most basic requirements of continuing

mental health. Continuous mental health tends to validate the things which a person with CMH gets into. Shortly, this means that if you know who you are and feel comfortable in being who you are, you will have a higher probability of finishing those things that you start.

The easy method for finding out who you are is by introspection, role-playing is so damn time-consuming and, from-the-outside - looking-in, slightly phoney. The realization is present that numerous students are freshly from the parental nest where the ability to find one's identity is somewhat limited by the expected identity enforced by the being it owns. In the comparatively small college, identity remains un-computerized. Here you are only partially computerized and, therefore, are still somewhat responsible for all the things you do.

BSC is still small enough in most of its classes to allow you to be called by name by the professor, if memory is flexible enough.

You set your own limits. If you remain flexible in your attack of problems and, thereby allow few limits to delay your progress, you will find little in this world to bore you in your leisure time.

## Arbiter staff positions

Anyone interested on a paid position on the Arbiter staff is urged to submit an application in writing to Howard E. Wright, editor. The salaried positions include associate editor, news editor, and layout editor

# Arbiter

Howard E. Wright . . . . . Editor  
Steve Tyson . . . . . Associate Editor  
Glenn Draper . . . . . Sports Editor  
Neil Gallant . . . . . Assoc. Sports Editor  
Art Galus . . . . . Copy Assignment Editor  
Charles Andrist, Steve Tyson . . . . . Advertising Business Manager

Patricia Robertus . . . . . Advisor  
Franklin Carr . . . . . Photographer  
Reporters John Martin, Sister Mary Ida Wasmuth,

Established May, 1968 as a weekly publication of Boise State College, the ARBITER is a continuation and consolidation of Boise Junior College ROUNDUP and Boise College ROUNDUP. The ARBITER is published weekly, except holidays and test weeks, by interested Boise State College students in cooperation with Graphic Arts and BSC Center for Printing & Graphic Services. Offices are in 11-B, Boise State College, 1907 Campus Drive, Boise, Idaho 83707. Phone messages will be taken at 383-1492.



by Art Galus

I was able to spend this past summer in the heart of the Idaho wilderness. For awhile I was uncomfortable in the quiet remoteness miles from the nearest road. However, to lay awake nights hearing a coyote yap above the sound made by the wind in the trees soon left a content feeling in me that the constant dissonance of city life never had.

A certain air of calmness rests over the back country where the sounds of racing engines and barking dogs are non-existent. The rush-rush-rush daily routine of the average city dweller slows to a relaxed walk, and people take time to see the sights around them and appreciate the world for what it is.

The people, too, of the back country are extraordinary people. Hospitality is the rule rather than the exception since company is scarce. These folks work the land using primitive methods, such as horse team and mower, and unconsciously follow a Rousseau-like philosophy and return to nature.

Compared to this, civilization is less than desirable. But I can't be unfair to civilization entirely; people as a mass-an inhumane, unfeeling, tramping mass-are something to be shunned.

There will be people, of course, whose reactions to my "desertion" of the ship are immediate and, perhaps, intense. But I am not deserting, only thinking wishfully that if everyone could break free of this commercial world, if all people could experience the calmness of the earth, then perhaps we could learn to live as we were to live

## Campus media set methods for publicity

To reduce the congestion on campus due to the increased enrollment, clubs and organizations are asked to contact the following people concerning campus and off-campus publications.

Groups wanting either an article or photo in the Arbiter are asked to see the Arbiter editor, Howard Wright. Deadlines for the Arbiter are Friday noon (stories) and Wednesday noon (photos) of the week prior to publication.

Groups wanting a photograph for the Les Bois are asked to contact the yearbook editor, Sue Sackman

Organizations wishing any other publicity are asked to see John MacMillan, News Bureau Director, in A-114

## Twins play football for BSC



WHO IS 6' 3", WEIGHING 230 POUNDS AND PLAYS FOOTBALL FOR BOISE STATE COLLEGE? Greg Phillips, left and Jeff Phillips, right, each fit the description given. They are the sons of Dr. and Mrs. John Phillips. Dr. Phillips in the center, who is dwarfed by his sons, is chairman of the BSC psychology department. Both Greg, left, (we think) and Jeff, right, (we think) are freshmen. Both were outstanding football players at Borah highschool. Greg is a speech-drama major while Jeff has enrolled in psychology. Boise State College officials sometimes have difficulties telling which twin is Jeff and which is Greg. Even father John had to stop and think when identifying the picture for publication.

## Parking problem poses threats to student cars

The BSC traffic situation has become extremely serious due to the larger than expected registration, Herbert O. Mengel, director of building and grounds announced today.

Mengel reminded the students that the lot in front of the administration building is reserved for faculty and staff only. At present, the director commented, there are two full-time campus policemen on duty, and they will ticket cars parked in unauthorized areas.

"As of yet, we have not had to tow any student cars away, but the situation has been getting worse, especially the parking in the fire lanes", Mengel said.

Penalties for violations include:

a. Students who fail to display parking decals correctly are subject to a fine-\$5 for the



first offense, \$10 for the second and any succeeding offense. Students who fail to register their motor driven vehicle(s) are subject to a fine-\$10 for the first and any succeeding offense.

b. Stop sign violation-\$5 for the first offense, \$10 for the second and any succeeding offense.

c. Parking or speeding violations - \$5 for the first offense, \$10 for the second and any succeeding offenses. At the time of fifth offense, student is subject to loss of permit and subject to disciplinary action.

d. Any ticket for any offense will be added to the total number of tickets accumulated - that is, the first ticket would be \$5, any tickets accrued after that would be \$10 each. These accumulate throughout the entire school year.

**THIS IS THE PLACE to park legally on campus according to Herbert O. Mengel, director of buildings and grounds. As you can see, there is plenty of room to park without a dented fender or a traffic ticket for parking illegally.**

e. Repeated violators or improperly parked cars are subject to removal, without warning, of the vehicle from college grounds by towing. Student must pay and clear all parking violations at the Office of Buildings and Grounds to obtain release clearance for the vehicle. The towing company will not release the vehicle from impound without this clearance. In addition, the vehicle owner and/or driver is responsible for all towing and impounding fees.

f. Any other traffic violations - \$5 for the first offense, \$10 for the second and any succeeding violations.

## KIDO slated to broadcast Bronco games

For the third consecutive year, broadcast rights for all Boise State College sports events have been granted to KIDO Radio in Boise. The announcement, made by BSC President Dr. John B. Barnes and KIDO General Manager Jim Davidson, followed the official awarding of the rights by the Idaho State Board of Education as trustees for Boise State College, in late June.

"Present plans", according to Davidson, "include the broadcast of all Bronco Football and Basketball games - home and away - with the play-by-play handled by former Pioneer League star Walt Lowe, plus commentary by Color Commentator Cap Ingalls. In addition, any playoff games or special events - such as KIDO's coverage of the Basketball Playoffs and BSC's Spring Football Game - will also be covered. KIDO is extremely pleased to have the opportunity to be "The Voice of the Broncos" again in the 1969-70 school year."

According to BSC Athletic Director Lyle Smith, "Boise State is very happy with the outstanding job done by KIDO, and the team of Lowe and Ingalls has shown considerable creativity and ingenuity in their broadcasts of Bronco sports. Their fine efforts, combined with BSC's outstanding debut in four-year Football and Basketball competition, led to the most enjoyable, accurate, and interesting coverage of Boise State's contests. We are most happy to announce that KIDO Radio will once more air BSC's Athletic Events."

## Westlund shows art in L.A. lobby

by Carolyn Berkey

Prints by Arnold Westerlund are on exhibit in the Liberal Arts Building lobby through September.

Westerlund, a regular exhibitor at the Boise Gallery since 1934, has won numerous prizes in the annual exhibitions. He has also shown work at the Seattle Art Museum, as well as Spokane, Coeur d'Alene and Richland.

A graduate of the University of Idaho, where he received his M.A., Westerlund's education also includes the University of Washington, University of Oregon and Columbus University. Westerlund also taught three years in Gooding, Idaho.

The prints in this exhibit are experimental, made from nature's waste products. For instance, embroidery was superimposed on an old painting to create the work called "Flower Branch." Crushed seeds and leaves have been embedded in the plate and hardened to create "Space Rose," a work representing Westerlund's herb collection.

Another print, "Pink Landscape," was first imprinted on the plate by using various textures. Then, having become hard, the resulting ridges formed surfaces which held the ink. One could say these prints are mostly "found" in the sense that the objects from which they are made dictate the form.

## I-M's Organized

Individuals interested in participating in this fall's intramural football program are urged to contact Dr. Eugene Cooper at his office in the P.E. Department. Rosters and rules of the game may also be picked up at Dr. Cooper's office.

Rosters are due by Friday, Sept. 19, and games will start next Monday.

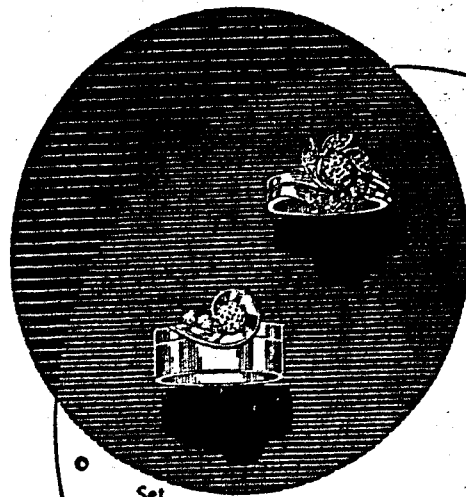
There will be no limit to the number of players on a team's roster.

## IK'S to hold meeting

The Golden Plume Chapter of the Intercollegiate Knights national honorary service fraternity cordially invites any interested freshman to a get-acquainted meeting Tuesday, Sept. 23 at 7:30 p.m. in the SUB Gold Room.

Only a selected number of pages will be accepted this semester. Therefore, all interested freshmen must make this meeting, or else contact Terry Adams, I.K. page master at 344-8826 before Sept. 23.

PATRONIZE ARBITER ADVERTISERS



*New and Different*

bridal sets for those with intentions matrimony. Of infinite appeal to the feminine type is the set shown above, with leaves of decorative diamonds. For the girl who likes things simple and tailored, the one illustrated below is particularly effective.



Let Hal Davis help you pick out your diamond from our vast assortment of stones and mountings.

At Molenaar-Davis you can be assured of knowing EXACTLY what you are buying . . . and at the lowest price.

**SPECIAL DISCOUNT TO BSC STUDENTS**  
Save at least 20% on your diamond purchase!

**CONVENIENT CREDIT TERMS**  
Take up to 18 months to pay!  
CREDIT EASILY ARRANGED

Boise's Diamond Specialists

*Molenaar-Davis*  
**JEWELERS**

109 North Eighth Phone 343-6151  
Open Fridays 'til 9

## CLASSIFIED AD SECTION

Do you need a roommate, transportation, a car, a job, or even a lover? If you want quick results try an Arbitrator classified ad. Rates are 5 cents per word per issue, with a minimum charge of 75 cents. Ad copy must be submitted to the Arbitrator office by 5 p.m. Friday for publication the following Thursday, or phone 385-1492.

### V.W. FOR SALE

1961 V.W., 55,000 actual miles, recently painted, extra snow tires with studs. Good condition. Phone 376-1973

### WANTED:

The Red Baron, see Snoopy.

### FOR SALE

This ad space. See the Arbitrator.

## Welcome Back Broncos!

Come in and tackle one of our pizzas which you have helped to make famous

## BRASS LAMP

## Pizza & Ale House

NOW 3 LOCATIONS TO SERVE YOU

BOISE  
572 Vista

McCALL  
Across From  
Shore Lodge

CALDWELL  
207 South 9th



# BSC Season Begins at Wenatchee

by Neil Gallant

Boise State College opens its 1969 Football season at Wenatchee, Washington against the Wildcats of Central Washington State of Ellensburg on Sept. 20. The game was rescheduled for the Wenatchee field due to the fact that school has not yet started at CWS.

This game, one of Boise's two night contests, will be a much tougher battle than last year's 61-7 victory by the Broncos.

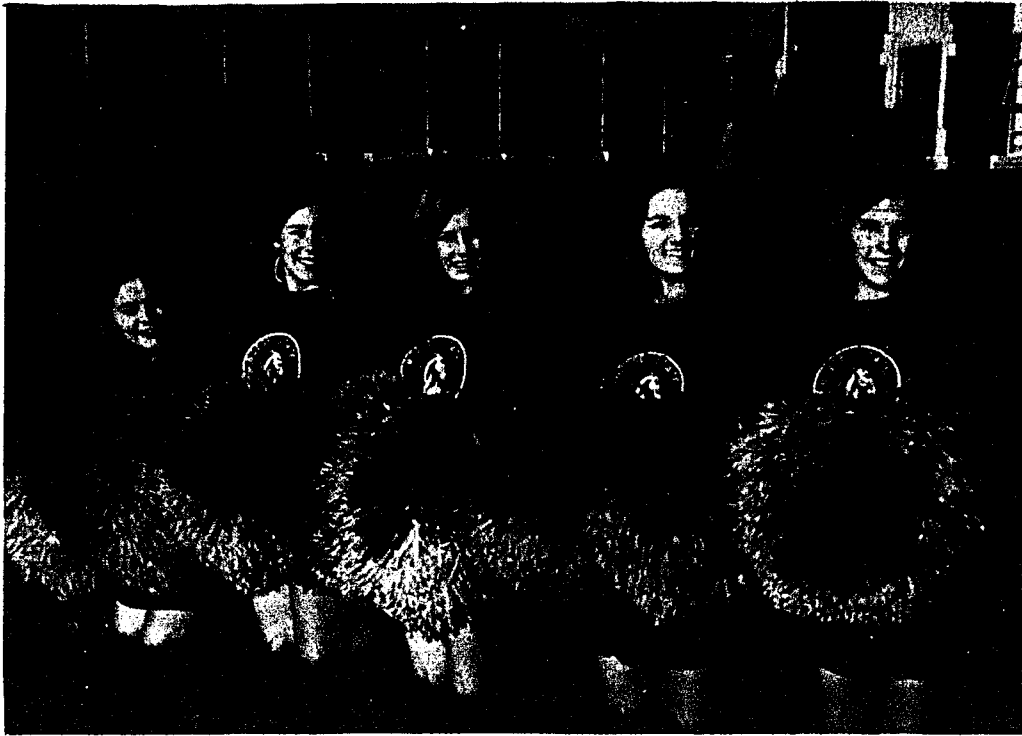
According to scouting reports, CWS Head Football Coach Tom Parry greeted 78 candidates for his '69 squad, and of these 78, 28 are returning lettermen or junior college transfers.

Central Washington held two-a-day practices from the opening sessions until Sept. 13.

Parry has stated that, "this is the largest turnout at CWS in years, and we recruited with our minds on more size and speed."

Doing Parry's signal calling will be an Everett Community College transfer Ray Colombo and moving up to the varsity squad is Don Hosley, a junior varsity standout.

Parry has moved several of his veteran defensive linemen to his offensive line this season.



**BSC CHEERLEADERS**, from left, are Kris Williams, Sandy Boyd, Carol Davis, Julie Lachiondo and Penny Walters. The Bronco yell leaders will lead the BSC students in cheers at the first home football game Sept. 27 against Whitworth College in Bronco stadium.

Parry's team is expected to have more of a ground attack; however, with Kockel at quarterback and the 4 or 5 good split ends and backfield people, the Wildcats could come up with a good aerial attack.

CWS is expected to greet Boise with the same offense as last season, but they have hopes for a more balanced attack.

BSC Coach Tony Knap expects a much more interesting contest, since he feels that the Wildcats were not beaten physically last season. Knap stated, "Their pass defense was weak last year, but they have an improved secondary plus the fact that they have better knowledge of our offense. The CWS team can and does have the ability to move the football."

The Wildcats will have the aid of a few Bronco injuries. Fullback Abe Brown is expected to be out until after the CWS

contest.

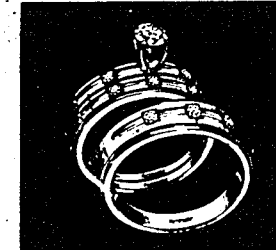
Greever, due to an knee injury, is lost for the rest of the season. Greever is an effective defensive tackle from Baker, Oregon, and lettered as a freshman. Larry Smith is back in uniform and will be ready to go on Saturday. Steve Svitak should be suited up and ready for action, along with Pete Skow, who is recovering from an ankle injury. Another disabled letterman, who will not be able to see action, is veteran quarterback Eric Guthrie. Guthrie re-injured the shoulder that was dislocated towards the end of last season in last Saturday's intersquad game at Bronco Stadium.

Coach Knap said that he was taking 40 men to Wenatchee to meet the Wildcats and with these 40 men he expects to return to Boise with a win. Added to the seven game win streak of last season.

**Complete Formal Rentals**

*Alexanders*

CAMPUS SHOP  
343-5291



CHELSEA \$300 ALSO FROM 200 WEDDING RING 75 MAN'S RING 100



VENTURA \$300 ALSO \$150 TO 1975 WEDDING RING 50



*A diamond ring to treasure forever*

Each Keepsake engagement ring is a masterpiece of styling and design, reflecting the full brilliance and beauty of the perfect center diamond.

REGISTERED **Keepsake** DIAMOND RINGS

Rings enlarged to show detail. Trade-Mark Reg.

**YOUR STUDENT ACTIVITY CARD IS YOUR CREDIT CARD AT CALL JEWELERS**

"SPECIAL TERMS TO BSC STUDENTS"



1004 VISTA AVE. Phone 344-3201

215 NORTH 8TH Phone 343-3444

Open Friday Night Til 9

# Fall Bowling Now Forming

Fall bowling leagues are now being formed. Anyone interested in the bowling program as a form of recreational value, or an opportunity to participate on the college bowling team, should get in touch with Kent Kehler, game room manager and bowling coach.

The Student Mens' League will be the league in which the BSC bowling team members will be selected.

League competition will start the week of September 21.

# Season Tickets Available

BSC Student Football Tickets will be available beginning Sept. 18 in the SUB information booth, according to Don Liebendorfer Jr., athletic publicity director.

The student season book of five tickets for all Bronco home games will be available between 10 a.m. and 2 p.m. on Sept. 18-19 and Sept. 22-26. To receive the tickets free, students must present their validated permanent plastic ID card.

★ STUDENTS ★

- NAVY P-COATS
- MIDDIE BLOUSES
- NAVY BELLBOTTOM PANTS
- HUNTING SUPPLIES

**Koppell's**  
**Browseville**

The Fun Spot to Shop  
Next to Larry Barnes Chevrolet  
30th Fairview, Boise, Twin Falls

GO BRONCOS !!!!

*The Lounge*  
*formerly*  
*The Strawberry Works*  
*208*  
*N. Capitol Blvd.*

*LOVE... IS ALIVE AND WELL IN BOISE*

*NEW FROM NORTH BEACH - Men's flaine bottom pants - Fillmore dance posters - Extraordinary jewelry - Smoking Accessories*

Free Money From Your Bookstore

**Be The Big Bread Winner On This Campus**

Nothing to buy

Pick up your entry form in your **FREE Term Planner** and Pocket Secretary at your bookstore. Today (Limited Supply) or deposit this entry form in Bookstore Sweepstakes Box within 4 weeks from start of classes

Name \_\_\_\_\_  
Address \_\_\_\_\_  
College \_\_\_\_\_

- Participating Manufacturers
- Sanfords
  - Major Accent
  - New World Dictionary
  - National Blank Book
  - College Notes
  - Campus Steins By Josten
  - Easton's Corrasable Bond
  - Easton's Zodiac Stationery
  - Gay Blades By Post
  - Stecco
  - Attache Cases
  - Cliff's Notes

**BSC BOOKSTORE**  
1907 Campus Drive