

9-12-1969

## Arbiter, September 12

Students of Boise State College

---

Although this file was scanned from the highest-quality microfilm held by Boise State University, it reveals the limitations of the source microfilm. It is possible to perform a text search of much of this material; however, there are sections where the source microfilm was too faint or unreadable to allow for text scanning. For assistance with this collection of student newspapers, please contact Special Collections and Archives at [archives@boisestate.edu](mailto:archives@boisestate.edu).



Boise State  
College

# ARBITER

Volume 2, No. 1

Friday, Sept. 12, 1969

Boise, Idaho

## BSC welcomes new faculty

To supplement the projected increase in enrollment, 37 new faculty members were appointed to positions at BSC. The faculty members, listed by schools are as follows:

### Arts and Letters

Dr. William E. Shankweiler, chairman of the Division of Arts and Letters announced the appointment of 15 faculty members for the 1969-1970 academic year.

Ross S. Nickerson was named an instructor in English. Nickerson is the first English department graduate of Boise College, receiving his B.A. in 1967. He holds the M.A. from the University of Utah.

Returning to the faculty after a one-year absence to work on a doctorate, Margaret Peck was appointed assistant professor of English. She taught at Boise College in 1967-68. She received her B.A. and M.A. in English from the University of Alaska.

A former Boise high school teacher, Louise Weitman, has been appointed an instructor in English. Miss Weitman is a graduate of Northwest Nazarene College and received an M.A. from the University of Washington.

Thomas Wilbanks, former part time instructor at BSC, has been appointed assistant professor of English on a full time basis for the coming academic year. He previously

taught full time at Boise College 1964-65. He received his B.A. from Trinity University, Texas, and his Th.B. from Princeton Theological Seminary in New Jersey.

Anna C. Wells is a new instructor in English. She received her B.S. from the U of

I. Her study under a fellowship grant was concerned with tutoring Indian students at ISU in the English language.

A graduate of Borah High School and BJC, Mrs. Linda McCracken is another new English instructor. She received a B.A. in English from ISU and

her M.S. from the U of I.

Mark Hansen received both the B.A. and M.A. from San Francisco State College in English with an accompanying B.A. in Russian. Before becoming an instructor in English at BSC, he taught at the Chinatown-North Beach English Language Center, San Francisco, teaching elementary spoken English to Cantonese-speaking adults.

New Art instructors are James K. Russell and Tarmo Watia. Russell taught last year at the University of Southwestern Louisiana. Russell holds a B.A. from San Diego State College, and both an M.A. and M.F.A. from the University of Iowa. Watia comes to Boise State from a position as art instructor at Southern Oregon College in Ashland. He received his B.S. and M.F.A. from the University of Michigan.

Delbert F. Corbett and David W. Rayburn are new assistant professors in the Communication Arts Department. Corbett has been teaching at Encina High School, Sacramento. He received his B.A. and M.F.A. from the University of Portland. Rayburn is a native of Idaho. His B.A. is from ISU and he has a M.S. in Speech Education from Southern Illinois University.

Patricia Robertus will instruct journalism classes and be advisor to the school newspaper and yearbook. She received her M.S. in Advertising from the University of Illinois and B.A. in Journalism from the University of Minnesota.

The BSC Foreign Language Department has a new instructor, Frances K. Sido. A native of Nice, France, she received her diploma from the Universidad de Barcelona, B.A. and M.A. from the University of

New Mexico.

Wilber D. Elliott has been appointed associate professor of Music. He holds a B.A. from the University of Washington and a Master of Music Education from Central Washington State College, (Ellensburg.) He was currently supervisor of Music Education in Clover Park school district in Tacoma.

Appointed to the Social Science Department is Martin W. Schaffer. He was an instructor at Boise College from 1964-68. His B.S. and M.S. are from the University of Oregon. Schaffer formerly taught in the department of Sociology at the University of Utah.

Warren W. Tozer has been appointed instructor in History. He comes to Boise State from the University of Oregon. Tozer holds the B.A. and M.A. from Washington State University in Pullman. He has been working on his Ph.D at the University of Oregon.

Paul Orlovich is the new assistant director of the Instruction Materials Center, which provides visual and audio aids not only to BSC but the

(Cont. to page 3, col. 1)

### "Masters" begins Subal run



CHUCK MARKS (left) and John Charchalis are seen in Goldoni's "Servant of Two Masters" during an outdoor summer performance in Julia Davis Park. The farce, directed by Ron Krempetz, is based on the "commedia del' arte" form of Italian Renaissance theatre and it has traveled throughout the state. The performance moves to the Subal Theatre Friday and Saturday of this week to continue Sept. 19-20. The next Subal presentation will be Shakespeare's "The Tempest" opening October 10. Communication Arts Department Head John Warwick will direct the Shakespearean fare.

### LesBois Staff Needed

All persons interested in working on the yearbook, the LesBois, are urged to contact Editor Susan Sackman or leave their name at the LesBois office in T-1.

### Saturday Dance

Saturday evening, the Hawaiian Club will present a dance from 9-12 p.m. also in the SUB. Further details on the event were unavailable at press time.

### Marine officer schedules visit

Marine First Lieutenant T. W. Gritzer will visit BSC Sept. 15 and 16. It was announced recently by the Officer Selection Officer at Fort Douglas in Salt Lake City.

The purpose of the visit is to select college students and graduates for officer training in the U. S. Marine Corps.

A veteran of the Vietnam conflict, Lt. Gritzer will discuss the opportunities available in the various officer programs.

Interested men students who desire to begin their military obligation yet want to complete their college education and women who are seeking challenging career opportunities should contact Lt. Gritzer in the Student Union Building between 9:30 a.m. and 2:30 p.m.

### Folk Concert

The Josh White Jr. Concert, scheduled for Sept. 13, has been cancelled due to a death in the artist's family. Social Chairman J. Hambleton announced this. The concert has been scheduled for Tuesday, Sept. 23. Hambleton reminded the students that the concert is still free of charge and will be held at 8 p.m. in the SUB.

### KETR dance

The Broadcasting Club is sponsoring a dance featuring "The Lump Sum" Friday, 9-12 p.m. in the SUB. According to Larry Wheeler, club president, the proceeds from the event will aid the campus radio station, KETR, to convert to FM programming. Admission is \$1.25 for singles and \$2.50 for couples.

## Dr. Barnes greets students

Welcome to the Boise State family! On behalf of the faculty and administration, we are very pleased with the quality of freshmen, transfer and returning students.

The first two weeks of the full semester are critical ones for every student. Getting off to the right start wins foot races and also enables students to vividly demonstrate academic ability.

While you are here this year, you will see remarkable changes in the exterior of the campus as two new buildings are completed which are already under construction and as the new stadium and swimming pool building is constructed.

We hope that the 1969-70 classes demonstrate an even higher level of esprit de corps and school spirit than those of last year. Make this your alma mater in both words and deeds.

Dr. John B. Barnes,  
president

## Office safe burglarized early Monday morning

A break-in occurred in the BSC business office during the early morning hours Sept. 8 and was discovered at about 5:00 a.m. by one of Boise State's security men. Extensive damage to the outer door of the large

safe took place to permit entry into the vault. The interior safe door was also damaged by acetylene welding apparatus to make entry into the main safe.

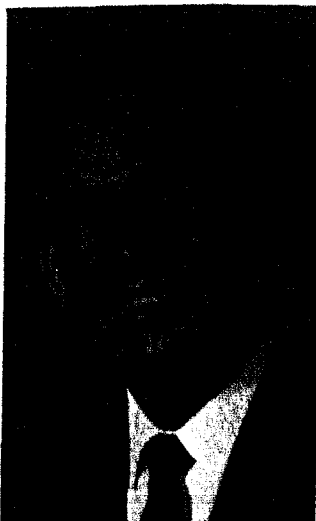
One broken window occurred, an inside door in one of the business offices was damaged, disruption of records inside the safe took place, but these can be readily reassembled. A black leather briefcase with no cash or checks was taken and its contents left on the floor of the Vice President's office.

At this time no inventory of losses is available, however, Boise State College uses daily bank drops throughout the year. College officers believe that the burglary may have been precipitated by the heavy registration which took place Friday and Saturday and by the event at the Bronco stadium Sunday night.

Boise State College is fully insured for its losses in currency as well as for the repair of the 2 safes and other property damages listed above.

Det. Dick Gifford and his team were promptly on the spot and are still conducting investigations. No further information was available at that time.

(See related photo, page 2.)



## New faculty (Cont. from page 1)

Southwest Idaho and Eastern Oregon school districts. He joins Boise State from Visual Sound of Boise. Orlovich has had experience with missile systems both in the Air Force and for Hughes Aircraft Company.

### Business and Public Administration

Dr. Robert E. Rose, Dean of the School of Business and Public Administration announced new faculty members for the 1969-70 school year.

In the Department of General Business, Charles D. Phillips was appointed professor and chairman of the department. Dr. Phillips was professor of management at Northern Arizona University. He also taught at the University of Delaware, Iowa and Maryland, and Western Maryland College. He received his M.A. and Ph.D. in labor and industrial management from the University of Iowa. His A.B. was in economics from De Pauw University.

Also new in the General Business Department is Richard C. Lane. Lane comes to Boise State from a position at Northern Arizona University, Flagstaff. He has also taught at the University of Missouri and Central Missouri State U. His B.S. and M.S. are from Kansas State College.

Appointed as instructor in General Business is former Meridian resident C. Randall Byers. He received his B.S. in business from the University of Idaho and was a research assistant for Fish and Game Reports, Department of Statistics. He received his M.S. degree at the University of Wyoming.

Marvin A. Clark has been appointed associate professor of business education. He will also serve in Department of Business Education and Office

Administration. He received his B.S. from St. Cloud State College (Minnesota) and M.A. and Ph.D. from the University of Minnesota. He comes to Boise State from the University of Alberta.

A new associate professor of business education is Robert C. Cornwell. Dr. Cornwell received his Ed.D. from Wartburg College. He has served as an office management consultant to the State of Arizona.

A new assistant professor of office administration is Susan I. Brender. She received her B.S. and M.A. from the University of Iowa and has taught at the University of Wyoming.

A graduate of Boise College, Mrs. Martha Crumpacker, returns to teach as an instructor in office administration. She has been a night school instructor on a part time basis at Boise State and has been teaching at North Junior High School.

William B. Eastlake is a new assistant professor of economics. He received his B.A. from Xavier University, and is a Ph.D. candidate at Ohio State University, concentrating on economic history, economic theory and Soviet economics.

Frederick W. Frazier is a new instructor in Economics and Public Administration. He received his B.A. and M.A. from Sacramento State College, Police Science and Administration. He will concentrate on the Law Enforcement program at Boise State College.

New to the Chemistry and Earth Science Department is Monte D. Wilson, who comes from the University of Idaho. Wilson received his B.S. at Brigham Young University and M.N.S. at the U of I.

Dr. Fenton C. Kelly is an assistant professor of biology. Dr. Kelly received the Ph.D.

from the University of California at Berkeley. He received his B.S. and M.S. from the University of New Mexico and has taught at the University of California, Berkeley.

### Science and Health

Eight new faculty members will be teaching in the Boise State College Division of Science and Health this fall, according to Dr. Donald J. Obee, chairman. In a move to strengthen the Mathematics Department, five new mathematics instructors have been added.

Frederick R. Ward received the Ph.S. from Virginia Polytechnic Institute. Ward has taught at the University of Colorado and was a trajectory analyst and aerospace engineer for the Goddard Space Flight Center. His B.S. is from William and Mary, and M.S. from the U. of Colorado.

Assistant Professor of Mathematics, Dr. Charles R. Kerr, has his M.A. and Ph.D. from the University of British Columbia. He received his B.A. from Washington State University.

Another new assistant professor is Yoza Takeda, who comes from the University of Idaho. Takeda received his B.S. from the University of Michigan and M.A. from the University of Missouri. He has also taught at the University of Missouri, Lake Forest Academy (Illinois), and Gonzaga University (Spokane).

Lloyd D. Tucker, assistant professor of mathematics, received his B.A. and M.S. from Southern Illinois University. He taught at the University of South Carolina from 1961-1964.

The fifth appointee to the Mathematics Department is Giles E. Bradford, III, who received his B.A. and M.A. from the University of Texas, where he taught from 1965-69.

Lois Jean Carey, R.N., Boise, will be teaching in the Registered Nursing program. She received her B.S. and R.N. from Columbia University. She comes to BSC from a position as charge nurse at St. Lukes Hospital.

### Education

Dr. Gerald R. Wallace, Dean of the School of Education at Boise State College announced new appointments for the 1969-70 school year.

John Jensen was appointed an assistant professor of Teacher Education and Library Science. He holds the B.A. from Western Michigan University, and M.A. from the University of Oregon



CONSTRUCTION WORKERS seem to be overshadowed by bare palm trees as they work on the heating tunnels leading to new general classroom building. The photo, taken this summer, really shows the reinforcing steel used in the tunnel walls. According to Director of Building and Grounds Herbert O. Mengel, the tunnels and the covering sidewalks should be completed in approximately three weeks.

where he is working towards a doctorate.

William F. Kirtland has been appointed associate professor and Director of the Reading Center. He received his B.S. and M.A. from Bemidji State College and the Ed.D. from Arizona State University. Dr. Kirtland formerly taught in public schools in Minnesota and Iowa and was Director of Diagnostic Services at Arizona State.

Clara Burtch has been appointed assistant professor of

Education. A former Supervisor of Elementary Education for the Boise public school district, she will be involved in the BSC elementary teacher education.

Miss Burtch received her B.A. and M.A. degrees in Education from the College of Idaho and was a part-time instructor at BJC. She has also taught in the College of Idaho evening program and at Mountain Home for the University of Idaho extension service.

## Vo-Tech appoints new staff

Five new appointees to the Boise State College Vocational-Technical Division were announced July 7 by Charles R. Rostron, Director.

Vernon E. Qualman will teach machine shop. A native of Nampa and a graduate of Nampa High, Qualman has worked as a journeyman machinist instructor at Puget Sound Naval Shipyard. He has taught machine shop at Nampa High School and is a member of the National Education Association and the Idaho Education Association.

Fashion Merchandising instructor in the Boise State two-year program will be Mrs. Judith Lemmon. She received her B.S. in English education from the University of Idaho and is a member of the Idaho Vocational Association, American Vocational Association, and the Distributive Education Teachers Association.

John P. Haydon will teach auto mechanics. A graduate of

Glenns Ferry High School, he attended automatic transmission classes for General Motors as well as automotive electrical and tune up at BJC. He has worked as a mechanic for Aero Chevrolet in Mountain Home, and was owner of a transmission company for six years. He comes to Boise State from AAMCO in Boise.

The Vocational-Technical Department has two new staff members. Gilbert M. Miller has been appointed assistant to the Director. Formerly he was area supervisor at Idaho State University, Vocational-Technical Education.

Erma M. Callies has been appointed counselor for the Vocational-Technical Division. She has a B.S. from South Dakota University and has taken counseling work at Idaho State University. From 1953-68 she taught P.E. and social studies at Buhl High School.

## Standard Insurance Company is pleased to introduce...



## Russell Dana LeBourdais

Russ has completed a summer-long period of special training under Standard's College Intern Program. He is fully qualified to help you plan a life and health insurance program to fit your needs now - with valuable options you may exercise after graduation.

Russell D. LeBourdais

500 Washington Street,  
Boise, Idaho 83702

343-4663 or 343-4664

## Standard Insurance Company

Established 1906 - Home Office: Portland, Oregon

## CLASSIFIED AD SECTION

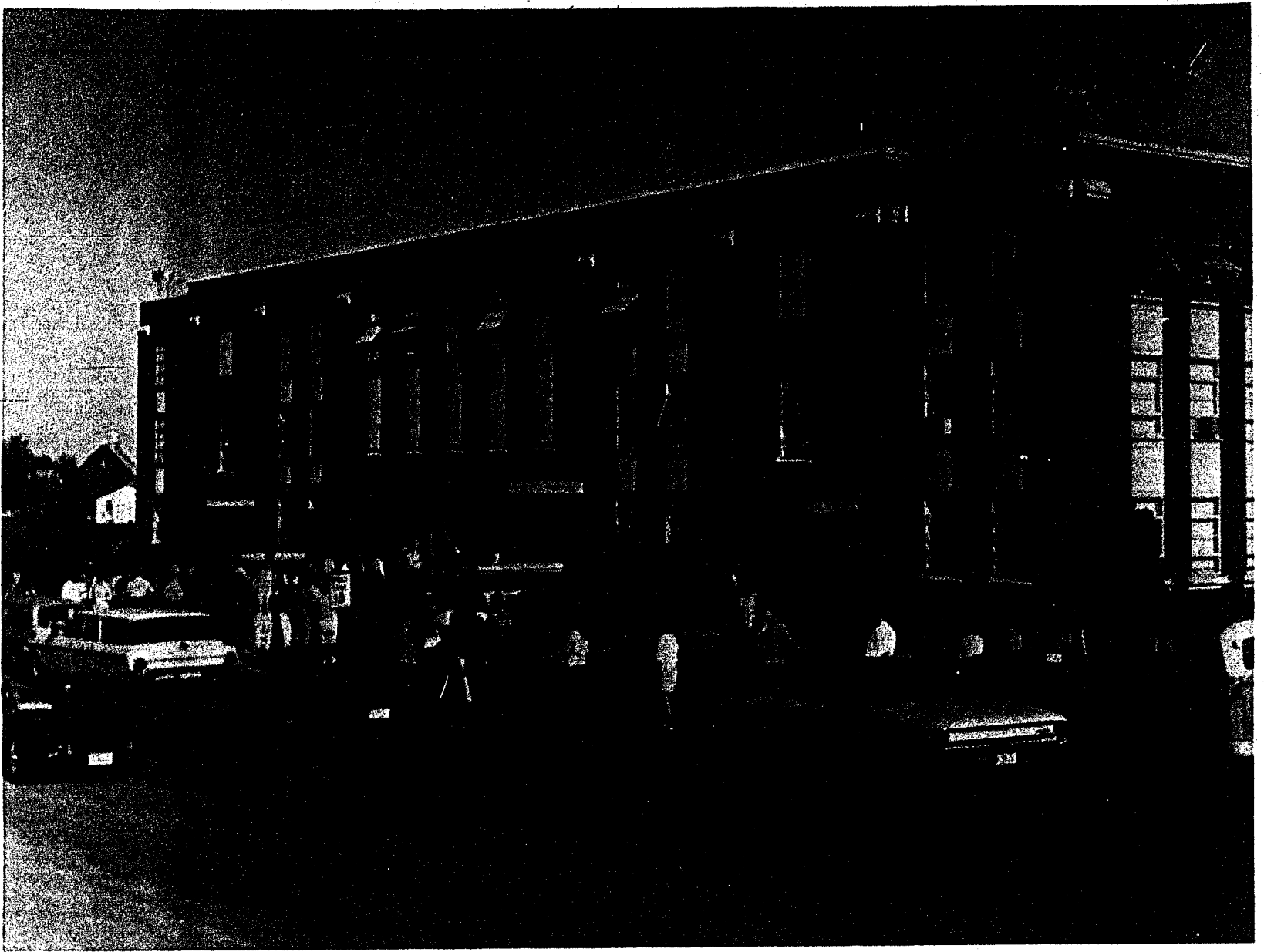
Do you need a roommate, transportation, a car, a job, or even a lover? If you want quick results try an Arbitrator classified ad. Rates are 5 cents per word per issue, with a minimum charge of 75 cents. Ad copy must be submitted to the Arbitrator office by 5 p.m. Friday for publication the following Thursday, or phone 385-1492.

### V.W. FOR SALE

1961 V.W., 55,000 actual miles, recently painted, extra snow tires with studs. Good condition. Phone 375-1973

### FOR SALE

1968 Olds 442 Convertible, High Performance 400, 4-speed trans., Bucket Seats, Power Steering, Positraction. Ph. 344-6981 or 344-7550.



# REGISTRATION '69





# Student housing should be built

With an increase enrollment of at least 36% during the first two days of registration at BSC, the increased need for student housing has all but depleted the current approved housing list. In past years, housing has been difficult to obtain, but the present shortage has become more acute largely to the expanding business and commerce in the Boise area. Several large corporations, such as Boise Cascade, M-K, and Ore-Ida Foods have chosen Boise as a division or world headquarters.

The existing housing has become severely taxed by large numbers of new families associated with these large firms, not to mention the substantial increase along by BSC faculty and staff.

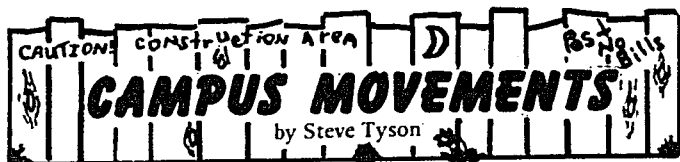
The economic principle of "supply and demand" has caught the college student seeking housing in the middle with a small supply, a large demand, and a high price. It seems that a great deal of the usual available apartments and rooms were rented long before the students started looking. New construction of apartments has slowed almost to the crawl with high interest rates and the inavailability of assistance from the federal government.

The BSC administration began to see the "handwriting on the wall" with the increase applications for admission to Boise State. In June, Edwin Wilkinson, BSC Dean of Men, issued a call for additional off-campus housing. Many fine persons in the community who had a "spare" basement, or upstairs room willingly made available their home to one-or several BSC students. Even with the help of these concerned individuals, the demand for apartments or rooms has exceeded the supply. Several students have been reported sleeping in their cars in near-by Julia Davis Park. There has been talk circulating among the administration of the possibility of even "doubling up" men students in Chaffee Hall. A contract to build a new women's dorm with a capacity of 300 persons is scheduled to go up for bids later this month, with occupancy slated for sometime in 1971.

This, however, will not solve the problem as the growth of Boise State is faster than the school obviously can provide dorms. Marian Hall, a temporary women's dorm leased by BSC from St. Alphonsus Hospital is slated along with the hospital to undergo the wrecker's ball in the Boise Urban renewal project. More low-cost housing for married students and faculty are needed. The existing BSC College Courts has a waiting list of 125. A few apartments have been built in the college area since 1966. It seems that the local private enterprise has expected Boise State College to provide most of the new student housing, but more student apartments should have been built, and should be built by private firms.

What is needed is immediate action—action before it is entirely too late. Private interests in Boise have delayed much too long in their action to provide more low-cost apartments. A longer delay will most certainly cause a greater shelter shortage—one that cannot be solved by a few additional dorms at BSC, and the kindness of many generous Boise people who graciously share their home with a Boise State student.

H.E.W.



Confusion only starts with registration; thereafter, very few people are going to tell you what you "have" to do concerning your studies or anything else.

That, friend, is a pitfall. Considering your age, you're old enough to fend for yourself, and now are somewhat on your own. You are responsible for all the consequences which stem from your decisions (that's basic existentialist philosophy.) What that means is "no excuses when you get your grades from the first test".

All the prof can do is present information or locations of information—all the rest is up to you.

If you ingest enough of the info for test regurgitation (some profs test rote memorization only) or reject the info out-of-hand or any stage inbetween, it will show up on that first-quiz grade-posting.

If one of the courses you've signed up in seems overly Michael Moose, there is a way out. The way out is called the 'Challenge System' and is built right in to the BSC system. If you already have proficiency in a subject then check with your advisor about the possibility of challenging the course. The department heads make up a general test over the subject involved, you pass it and get credit for the course.

"Gots" to remember, Troops, that campusology is not for credit, in fact, it is detrimental to attaining credit. Therefore, stick to studies of more reliable material.

The lab for Camp 101 is universally conducted in the SUB and elsewhere about the grounds.

\*\*\*

It takes an average of five

years to teach a man to be a poor target; you have to crawl prior to walking, walk prior to running for a running man is a poor target. Oddly enough there is a lower limit to the age at which a man can be taught to fire at targets (17) and of even greater maturity than that to fire on running targets. The gist of all of this is that preparation and maturity is required for any and all endeavors, no matter how valid.

## Senate elections slated Sept. 26

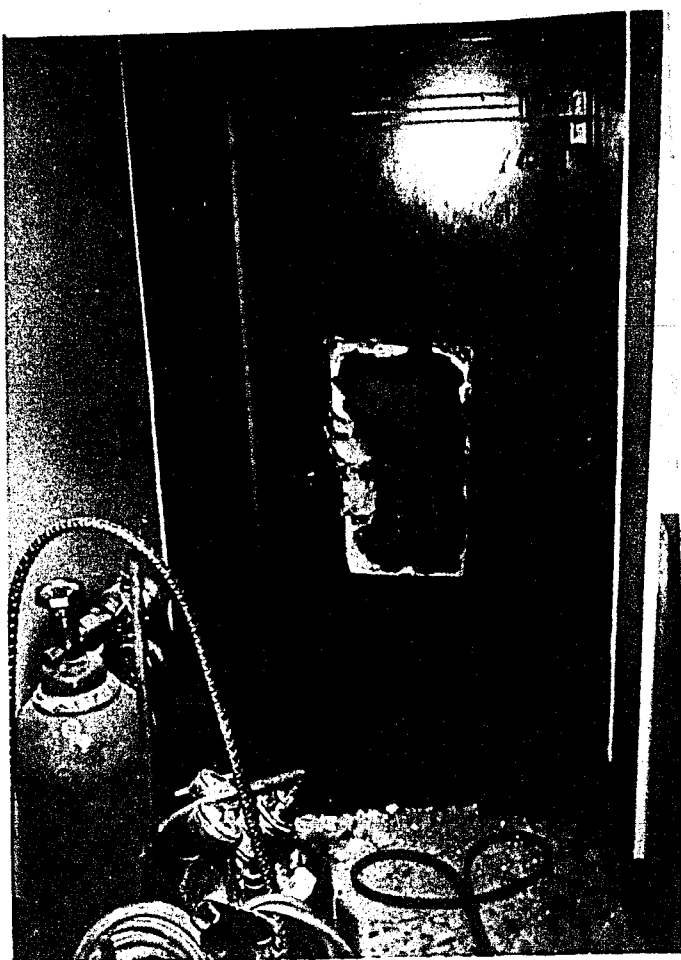
Student Senate elections have been set for Sept. 26. Four class presidents and 12 senators will be chosen.

Details of election procedure will be announced next week. Interested students may contact Jim Tibbs in the ASB office in the SUB or call 385-1440.

## List of officers due in sub

Student organizations must submit a list of officers and faculty advisors to the Director of Student Activities. The names should be filed with the Director's office, across from the SUB bookstore, no later than Wed., Sept. 18.

Harry Shimada, Director of Student Activities, also reminds club officers that mail is accumulating in their SUB boxes. It should have been picked up last week or this week but definitely by next week.



THE BURGLARIZED BSC BUSINESS OFFICE SAFE is shown shortly after its discovery Monday morning. Final tabulations Wednesday showed that about \$4,000 in cash was taken. The figure was announced by college officials after they conferred with Boise Police and insurance adjusters. The investigation is continuing according to Capt. Gene Lee, director of the criminal investigation division of the Boise Police Dept.

## Gibb named president's aid

Robert S. Gibb, a well-known Idahoan, has joined Boise State College as an Administrative Assistant to BSC President John B. Barnes.

An Idahoan for 27 years, Gibb left Nebraska to coach at Boise High School in 1942. He



Robert S. Gibb

became Director of Athletics at the University of Idaho in 1954.

Gibb earned an A. B. from Nebraska Wesleyan University and an M. Ed. from the University of Idaho. He is currently Honorary Chairman of

the Idaho Easter Seal Drive, and has been active in many other community and state civic activities. From 1960-66 he was Secretary of Inspiration, Inc., and Dean of Christian Education at the First Methodist Church, Boise.

Commenting on his appointment, Gibb said, "This position at Boise State seems to me to be a culmination of all the rich experiences I have gained in education. It is thrilling to note the vibrant, pulsating rapport between administration, staff, and student body. It now becomes my privilege to share this as a staff member."

## Idaho senator sponsors bill

Senator Frank Church (D-Idaho) is sponsoring legislation to grant more flexibility in the setting of interest rates in the Federal Office of Education Guaranteed Student Loan Program. The program allows students attending institutions of higher learning to borrow money for current college expenses from private lending institutions and defer payment until graduation. Last year, 2980 students from Idaho received \$2,551,653 under the program.

"Rising interest rates have caused many banks to drop the program this year because they can get a better return on their money elsewhere," Church explained.

"We are faced with a dual problem this year," Church said. "The Nixon Administration has proposed across-the-board cuts in the federal education budget and, at the same time, high interest rates have all but dried up funds in the private sector. Unless remedial action is taken, thousands of students from all over the nation who have made use of the Guaranteed Student Loan Program will be unable to receive further help in obtaining a college education."



by Art Galus

In every time of history, some outsider, playing the role of martyr and prophet, has warned the populace of the coming of a dire event only to be pushed aside and his advice and warning remembered only after the event has occurred.

I, therefore, not wishing to be aside or sincerely wanting to martyr myself, am in a predicament—"to be or not to be."

Allowing myself the handicap of being 21 and no longer an adolescent, I am still able to be "burned" at conditions far from favorable. Although I spent the summer locked in the Idaho Wilderness, my Sunday Statesman (that came every Thursday) kept me abreast of Boise's mood, and that mood has left me concerned.

Boise is heading toward a definite confrontation between the established community and the newer, younger, more energetic generation.

Boise will be the scene of a splitting apart, the forming of the Gap, a visible separation of law and order.

As conditions are, no facilities exist where teenagers can meet among their peers. These adolescents, high school and junior high students, have warned the community with angry letters in the Statesman. As of this week, that was all they were doing—next week? Who Knows?

For the want of recreation in a city that procured funds to entertain its senior citizens, teenagers will begin to drift away from the cultural center and seek quieter, more secretive sports, i.e. grass, horse, LSD, crime, and related endeavors.

The problem is basic... distrust and how to undermine it. "Keep the kids out of the smoking backrooms that are stereotyped as criminal" is the adult answer. "Hide your desires on an off-the-beat dirt road and forget the outside world" is the adolescent answer.

Perhaps even Boise, once known as a town with the highest juvenile delinquency rate for any city its size in the United States (1954 figures; source: "The Boys of Boise.") can find a way to bridge the Gap, but not by ignoring the situation or writing it off as being left-wing inspired.

## Two librarians appointed

Dr. A. H. Chatburn, Director of Educational Services at Boise State College, announced the appointments of two new librarians effective July 1.

Appointed as Library cataloger is David E. Crane of Chico, California. Crane received his B.A. from San Francisco State College and M.A. from San Jose State College. He belongs to the American Library Association, and the California Library Association. He has been a reference librarian for the Daly City Public Library and comes to Boise State from a position as cataloger at Chico State College.

Mrs. Ann Barnes of Kirkland, Washington has been named to the Curriculum Resource Library and will also serve as librarian. Mrs. Barnes has her B.A. from Brigham Young University and her Master of Library Science from the University of Washington. She is a member of Phi Kappa Phi honorary.

# Lettermen spark Bronco squad

Head grid coach Tony Knap and his 1969 football squad began practice Sept. 1 in preparation for the initial game of the season against Central Washington on the twentieth.

Out of eighty candidates Coach Knap received, 40 of them, who are returning lettermen, will not have to learn Knap's style of play. He again will use the Pro-T offense that worked so well for the Broncos last season.

Boise will be aided by experience as they face six opponents from last season.

The Broncos open up against CWS at Ellensburg. Boise inflicted a stunning 61-7 nightmare on Coach Tom Parry's Evergreen Conference Champions, and the Wildcats will certainly not stand for a repeat like that this time.

## Home Opener

The Broncos open their home stand on the 27 against Whitworth under the lights. This contest will be the only home night contest at Bronco Stadium. Whitworth will also be out to avenge a 49-0 thumping at Spokane last year.

Next the Boise Squad will trek to California for a game with the California Polytechnic Institute. The Mustangs were 7-3 last season and have 30 returning lettermen. Coach Joe Harper expects a better team this year and this contest should prove to be tough.

## Homecoming Game

On Oct. 11, the scene will again be Bronco Stadium for the annual BSC Homecoming game. The contest features Colorado State, one of Boise's new opponents. Little is known about the Bears, except for a 5-3 record from last year's competition.

Oct. 18 finds the Broncos on the road to Cheney, Washington for a contest against Eastern Washington State. Boise will again participate in Homecoming while at Cheney. The Broncos began their seven game winning streak against the Washington team with a 20-0 victory last

season and the Bears will be after this one.

A week later Boise ventures to Ashland, Oregon to invade still another homecoming contest against the Red Raiders of Southern Oregon. This school, too, is a new opponent for Knap's team. One thing for sure, they will be out to avenge a NAIA District II basketball playoff crushing at the hands of Boise State.

## 'Parents' Day, 1969

November opens with BSC hosting Hiram Scott College of Scottsbluff, Nebraska. This contest will feature the annual 'Parent's Day' festivities at Boise State College.

Western State College will be Boise's eighth opponent of the grid season. Coach Gordon Zapp's squad will be out to reverse the 41-0 stunning at Bronco Stadium last year.

Boise State then returns home for the rest of its schedule against Idaho State and the College of Idaho.

ISU will be out to turn the tables on a 27-20 beating by the Broncos last season. This contest will feature Alumni Day in which all former BSC, BC, BJC, and ISU alumni will be welcomed to receive special recognition.

To round out the season, BSC hosts neighboring C of I of Caldwell. Last year Boise ended the he season with a 16-7 decision over Coach Buzz Bonaminio's eleven, and preserved a seven game win streak.

## Knap Expects Betterment

Tony Knap has commented that, "All in all our 1969 schedule, overall, will be a bit tougher than in 1968. From the enthusiasm and head-to-head combat displayed by our BSC football squad in spring practice, adding the 'winners' philosophy that we developed in 1968 plus the concentration and development of individual strength, quickness, and mastery of specific skill by each individual... I would have to say that we expect to be a better Football team than in 1968."

# BSC BRONCOS 1969 Football Schedule

Sept. 20	Central Washington State (Wenatchee)	1:30 p.m.
Sept. 27	Whitworth (Home)	8:00 p.m.
Oct. 4	Cal. Poly (San Luis Obispo)	7:30 p.m.
Oct. 11	Colorado State (Homecoming)	1:30 p.m.
Oct. 18	East. Wash. State (Cheney)	2:00 p.m.
Oct. 25	So. Oregon (Ashland)	1:30 p.m.
Nov. 1	Hiram Scott (Home)	1:30 p.m.
Nov. 8	Colo. West. (Gunnison)	1:30 p.m.
Nov. 15	Idaho State (Home)	1:30 p.m.
Nov. 22	College of Idaho (Home)	1:30 p.m.

# Gem State 100 set for weekend

(Special) Idaho's richest auto race, The Gem State 100, will unfold this Friday and Saturday night at Meridian Speedway. Bill Crow, racing association president, anticipates a large field of local and out-of-state super modifieds for the two-day event. The special open-competition event holds a \$1,000 first place purse, with a 50-lap main event Friday and a 100-lap final Saturday on the 1/4-mile paved oval.

Spokane's Norm Ellefsen seems to be picked as the pre-race favorite, as he has dominated the last two Canadian-American Modified Racing Association shows at the local oval. Besides being the point leader in CAMRA, Ellefsen showed quite well at open-competition sprint race at Minnesota State Fair in St. Paul last month. A \$100 "bounty" has been set to break Ellefsen's track record at Meridian of 13.65, set earlier this year.

Other out-of-town entries include Ernie Koch and Bob Gregg of Portland. Koch will pilot the B-K Offy sprint, and Gregg is said to have a brand-new machine for the event. Ed Evans from Reno, in a 327 Chevy sprint and Frank Weiss from Calgary, Alta, are also entered. Al Keller and Glen Kenyon are slated to come from Seattle. Mel Andrus, Bill Madsen and Dick Card of Salt Lake have tentatively filed entries.

Local entries include 1969 MRA A Class Champion Jerry Lundgren, Glen Naylor, and Bill Crow of Boise. Emmett entries include the two-car B&H Racing

Team of Bob Beverly and Chuck Neitzel, along with Jake Spoor. The Ontario based Pink Ladys, owned by Art Sugai, will be piloted by Bob Neely and Jim Roberts.

Runner-up to Lundgren in the point battle, Kenny Hamilton, has rebuilt the former Jerry Donnelly sprint car and added a 427 Chevy engine for the special open-competition race.

A straight-up start will be utilized both nights. Time trials start at 7:30 p.m., with racing immediately following.

# Tickets to be distributed

BSC Student Football Tickets will be available beginning Sept. 18 in the SUB information booth, according to Don Liebendorfer Jr., athletic publicity director.

The student season book of five tickets for all Bronco home games will be available between 10 a.m. and 2 p.m. on Sept. 18-19 and Sept. 22-26. To receive the tickets free, students must present their validated permanent plastic ID card.

Following the Sept. dates for picking up tickets, the books will be available during the immediate week preceding a home game.

The first Bronco home game is slated Sept. 27 with the Whitworth College Pirates at 8 p.m.

## TEKES NEED BOOKS

TKE is sponsoring a bookdrive to supplement their library Sunday, Sept. 14, in the Warm Springs Ave. area. Publicity Chairman Dave O'Leary indicated that texts, reference books, and books for general reading, are needed to build the fraternity library.

## CLASSIFIEDS PAY!



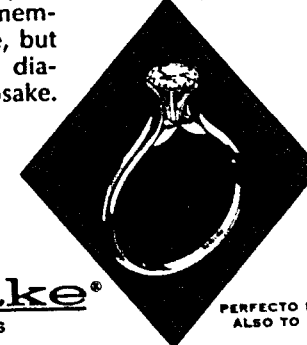
To express  
your love  
... forever



NAPOLI \$500  
ALSO TO 2250



SPUNLACE \$350  
ALSO TO 2100  
WED RING \$79.50



PERFECTO \$200  
ALSO TO 2100

REGISTERED  
**Keepsake**  
DIAMOND RINGS

YOUR STUDENT ACTIVITY CARD  
IS YOUR CREDIT CARD AT CALL JEWELERS

"SPECIAL TERMS TO BSC STUDENTS"



1004 VISTA AVE.  
Phone 344-3201

215 NORTH 8TH  
Phone 343-3444

Open Friday Night Til 9

# Help Wanted!

\*Advertising

\*Proofreaders

\*Student Photographers

\*Reporters

Help the Arbiter grow  
with BSC!

All interested persons are invited to apply at the  
Arbiter office in T-1, or call 385-1492.

# Bowlers to roll in fall league

Fall bowling leagues are currently being organized for students, faculty, and staff at Bronco Lanes in the SUB, according to Kent Kehler, game room manager.

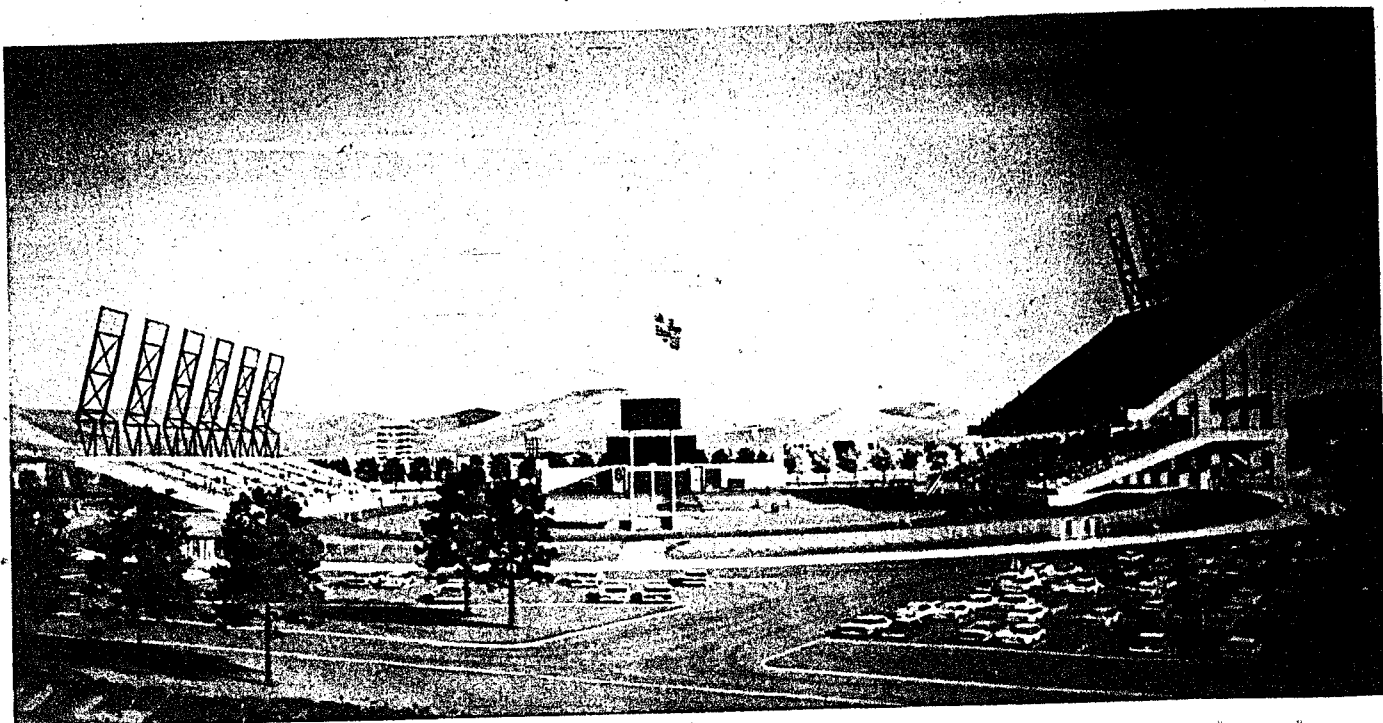
The Leagues are designed for those who feel they cannot compete against more experienced bowlers. Handicaps are given to everyone, thus making it 'even' for the inexperienced bowler, Kehler added.

Anyone interested in joining the fall leagues may register now at the SUB game room.

# Complete Formal Rentals



CAMPUS SHOP  
343-5291



## Stadium, P.E. addition to be built

Bids are to be opened Sept. 24 for the construction of the new swimming pool and general purpose physical education building to begin sometime in October, BSC officials announced today. The 16,000 seat stadium will under go construction immediately following the last home football game of the year for the Broncos. The present wood stadium, built in 1951, will be torn down and a new pre-stressed concrete structure will be erected at the same location.

The new stadium initially is designed to accommodate 14,272 spectators with

provisions for adding an upper deck on the east side and for completing the oval for future capacity of over 20,000.

The playing field will be of artificial turf and college officials have indicated extensive public use of the stadium is anticipated including high school football games as well as civic events. Surrounding the playing field will be an all-weather running track. The field will be lighted for night events and on the top of the west section will be the press box with capabilities for broadcasting and telecasting in addition to regular reporting space.

At the south end of the stadium the new Varsity Center

will contain locker and shower facilities for the Broncos and visiting teams in addition to offices for the coaching staffs. In the Varsity Center will be a large meeting room for football and track squad meetings.

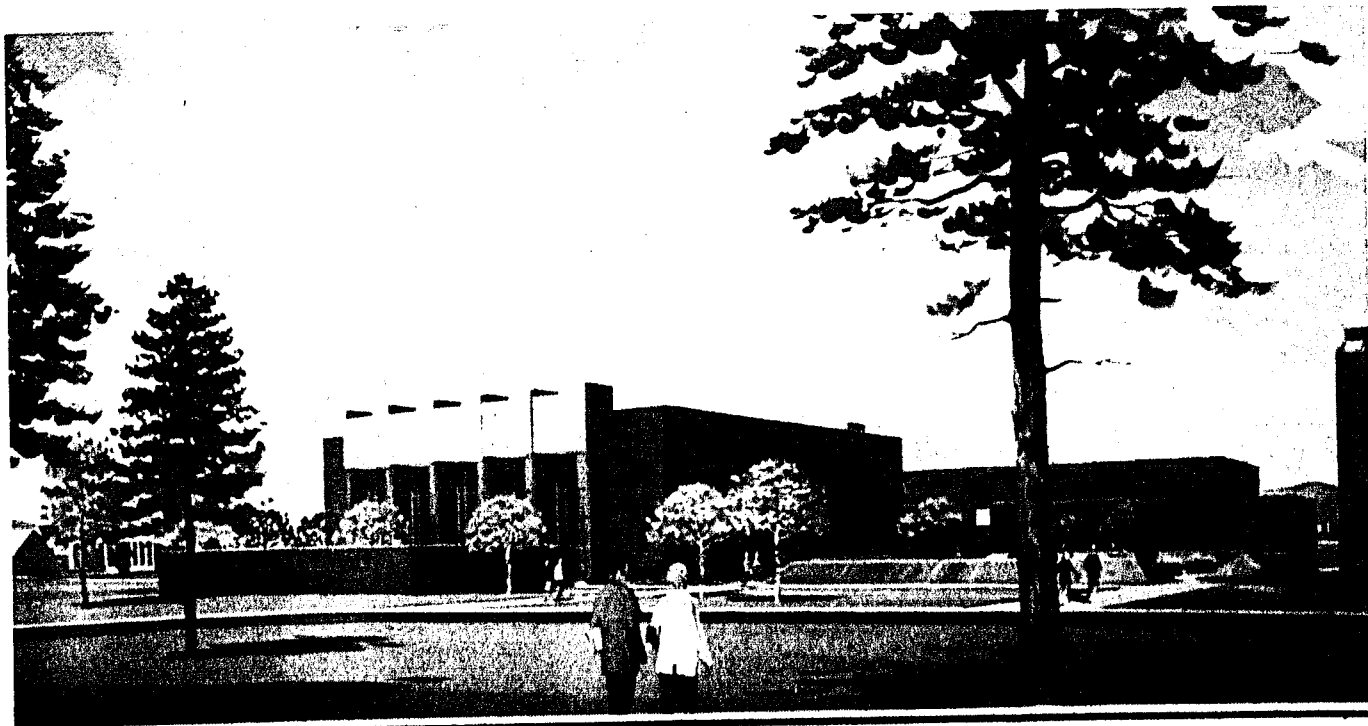
The other portion of the athletic complex will be located next to the basketball pavilion. This building will contain an olympic sized swimming pool with six lanes for racing, plus a diving area will be over 12 feet deep. To the south of the pool will be an outdoor lounge and recreation area.

The northern portion of the building will contain a multi-purpose gymnasium

without spectator seating and a room for use by the Bronco wrestling squad.

The multi-purpose symnasium will be used for physical education, basketball, volleyball, badminton and have climbing ropes, horizontal and parallel bars, free swinging rings and trampolines. Between the new structure and the basketball pavilion a plaza is planned for informal conversation around concrete planters.

The swimming pool multi-purpose gymnasium-stadium is expected to cost around \$3 million depending on the bids received from the contractors and will be paid out of student fees.



# Summer session graduates 134

Summer graduation ceremonies for Boise State College were held Aug. 15 in the Student Union Building, with 105 candidates for the baccalaureate degree, and 6 candidates for two-year diplomas. Also awarded were certificates for Licensed Practical Nursing or Computer Programming to 23 students.

Dr. Warren B. Knox, President of the College of Idaho spoke on the topic of "Reason, emotion, decision and leadership: a tetralogy for survival." The Reverend John Butler delivered the invocation and the benediction. The diplomas were presented by Dr. John B. Barnes, President of Boise State, and Mrs. John Walters, President of the State Board of Education.

Students receiving Baccalaureate degrees included:

**SCHOOL OF ARTS AND SCIENCES**  
*Division of Arts and Letters*  
*Bachelor of Arts, Art*  
 Walter Wallace Roberts, Jr.  
*Bachelor of Arts, English*  
 Linda Sue Koester, Phoebe A. Lindsey, Norma Irene Andrews Pember, and Elizabeth Jayne Tucker.  
*B.A., English, Secondary Ed.*  
 David R. Emry and Barbara L. Fine  
*Bachelor of Arts, History*  
 Nancy Ann Glimp Waldner  
*B.A., History, Secondary Ed.*  
 Gary W. Frisch, James Howard Gray, Ivan D. Phelps, and Gregory Lind Pilcher.  
*Bachelor of Arts, Music, Vocal*  
 Donna L. Bratt  
*Bachelor of Arts, Social Science*  
 Donald E. Knapp, Gregory Russell Goade, John R. LaForge, Stephen F. Nagy, Carol M. Qualman, and Jon Stephenson  
*B.A., Social Science, Sndary Ed.*  
 Richard Dale Emert, Henry M. Gabel, Georgia M. Hansen, and Michael J. Walker.  
*B.A., Social Work*  
 William James Teverbaugh  
*Division of Science and Health*  
*B.A., Biology, Secondary Ed.*  
 Pamela M. Smith  
*B.A., Math, Secondary Ed.*  
 Ronald Wayne Young  
*Bachelor of Science, Mathematics*  
 Danny L. Davis  
*Bachelor of Arts, Medical Technology*  
 Robert S. Farris, William Raymond Miller, and Christine P. Will.

**SCHOOL OF BUSINESS**  
*& PUBLIC ADMINISTRATION*  
*Bachelor of Arts, Accounting*  
 James D. Messer  
*Bachelor of Bus. Adm., Accounting*  
 Gary Robert Piva  
*Bachelor of Bus. Adm., Business Ed.*  
 Gary E. Hambley, Larry Mack Jeppesen, and Robert H. Smith.  
*Bachelor of Arts, Criminology*  
 Susan Kathleen Benson, Ernest C. Lapple, Robert W. Taylor, and John Brian Thorne  
*B.A., General Business Administration*  
 Ralph Benjamin, Eric A. Bodily,

## Cooperative Plan Instituted with Poverty Agency

The Western Idaho Community Action Program (WICAP), of Emmett and Boise State College will cooperate in reporting participation in WICAP senior citizen programs, BSC officials announced July 10.

Dr. Gerald Reed, Director of Special Projects at BSC, has been named project director. Dr. William Bronson, Mrs. Irene Wilcox, Mrs. Frances Guzie, Leonard Harbison, WICAP Director, Mrs. Evelyn Russel, senior citizen coordinator, and several Boise State students majoring in social work are on the research team.

The Administration on Aging made the grant to WICAP and the College for the joint venture. Dr. Reed said senior citizen volunteer participation in Southwest Idaho has been recognized as outstanding. The results of the study will be distributed to rural offices throughout the country, state Offices of Aging, and the National Administration on Aging.

The project began in August with interviews and testing by Mrs. Wilcox, Mrs. Guzie and Dr. Bronson. Collection of data by social work students will be carried out during the school year. Field experience in social work will be provided students by this grant project, Dr. Reed said.

## LITTLE MAN ON CAMPUS



"IT ISN'T FOR MONEY THAT ONE GOES INTO TEACHING - ON THE CONTRARY, I FIND A DEEP & PROFOUND PERSONAL SATISFACTION"

F. Patrick, Dora Beth Perkins, Nancy Marker Powell, Linda K. Quilici, Janet Russell, Welles Mae Seifert, Judy A. Shaffer, Audrey Shinn, Caroline E. Smith, Barbara Muth South, Jane Kathleen Stanley, Joanne Stickle, Karen Upchurch, Sharon Ruth Welch, Elizabeth Deane Wright, Kenneth Delano Wright, and Glorianne Cortabitarte.  
*B.A., P.E., Secondary Ed.*  
 Charles R. Root  
*B.S., P.E., Secondary Ed.*  
 Stanley Dean Hicks

## BSC joins city in study

Boise State College president Dr. John B. Barnes signed an agreement July 10 with Boise City for a study in conjunction with the Model Cities program. The six month study will be carried out by the Center for Business and Economic Research will investigate present property taxation data and zoning classifications both within the Model Cities area and Boise City in general.

The Center will select and analyze sample city blocks within each zoning classification. The Center will review and analyze historical and projected property tax revenues in the study area.

Other objectives of the study will be to consider the economic impact of alternative taxation methods and the preliminary design of a data retrieval system that could be used by various agencies for planning.

The project, which started in July, has a tentative termination date of December 31. Boise State College personnel involved are Christopher Daflucas, Director of the Center, and Roger Allen, Assistant Professor of Business Administration.

## Administration names three to positions

Dr. Richard E. Bullington, Executive Vice-President of Boise State College, has announced three appointments to the Administration.

Dr. William W. Hendry has been named Dean of Student Personnel Services. Dr. Hendry has a B.A. from Alma College, Michigan, an M.A. from the University of Michigan, and an Ed.D. from Arizona State University. He belongs to the National Education Association, New Jersey Education Association, National Association of Secondary School Principals, New Jersey Association of Secondary School Administrators. He has published over 16 projects in professional publications and was principal of Chandler High School, Arizona and Inglewood High School, California. He comes to Boise State from a position as principal at Teaneck High School, New Jersey.

Gerald E. Nelson has been named Associate Registrar. Nelson received a B.S. and M.Ed. from the University of Montana at Missoula and is a candidate for the Ph.D. degree from Utah State University.

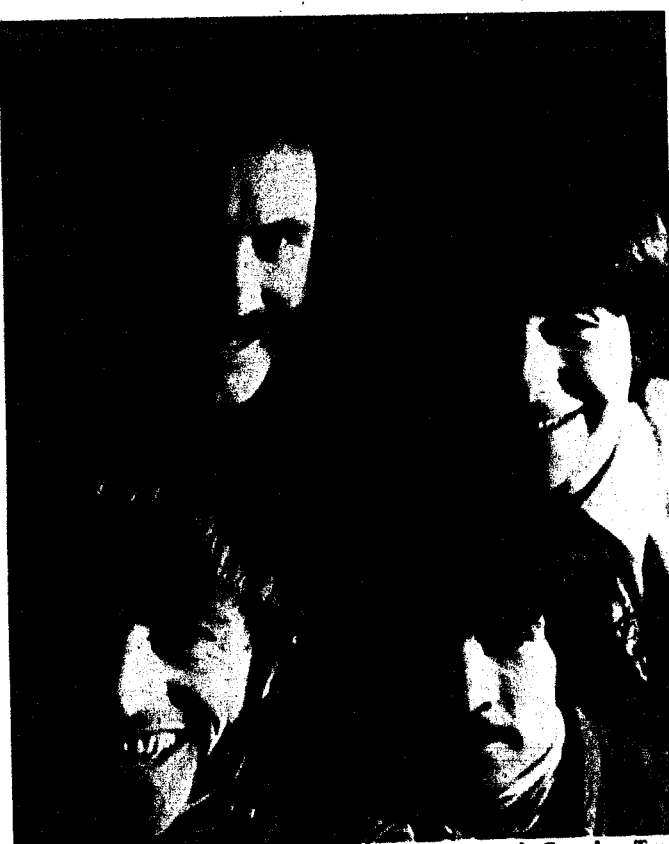
A new position this year, Director of Student Activities has been filled by Harry S. Shimada Jr. Shimada comes to Boise State from the American Falls School District. He has been Director of Programs at the University of California at Los Angeles, and Program Director at Idaho State University. Shimada received his B.A. from Idaho State University.

## Sports clubs form at gym

Tennis and archery clubs are being organized by the BSC Physical Education staff. The first meeting for both groups is scheduled for Thursday, Sept. 18 at 6:30 p.m. in 130 Gym.

Students wanting to perfect their skill in either sport and to meet other interested men and women are invited. Those unable to attend may contact any member of the PE department.

## First concert slated



ALPHA KAPPA PSI will present the first concert of the season "Moses Lake in Concert" Saturday, Sept. 20 in the gym. Recording artists on Together Records, the group currently has the song "Oobleck and Moses" on the pop charts throughout the nation and Canada. Two performances are scheduled, one at 3 p.m. and one at 8 p.m. Admission for the event has been pegged at \$1.25 per person at the afternoon performance, and \$1.50 in the evening.



**Circle K RUSH**

Smoker, Wed., Sept. 17

7-9p.m. West Ballroom

2.3 GPA

All interested men are invited

**Gamma Phi Beta**  
**Sorority**  
**Announces Colonization**  
**Sept. 21-27**

**Interested Girls Register**  
**Dean of Women**  
**Beginning Sept. 8**

**Colonization Tea**  
**Sunday Sept. 21, 2-4 p.m.**  
**SUB West Ballroom**



## Bowman named grappling coach

A recently-named addition to the Physical Education department, Bill Bowman, will also assume duties as head wrestling coach for the Broncos according to Athletic Director Lyle Smith.



Bill Bowman

Bowman's coaching experience began in 1946-47 at Camas County high, and includes twelve years as head wrestling coach and also coached track and football at Boise High School. Recently, from 1966-69, Bowman has been Director of Research for the Idaho Department of Education.

Included in his many accomplishments are Boise high wrestling teams which produced four Idaho State High School Championships, in 1958, '60, '63, and '64. Second-place finishers under Bowman's tutelage came in 1961 and '62, with a third-place in 1965. During the years 1958-65 at Boise, Bowman produced twenty individual State Wrestling Coaches' Men of the Year.

According to Lyle Smith, Bowman competed in many sports in high school, college, and in the service. Coupled with his many years of coaching, counseling, and allied activities, Bill brings extensive experience to the Bronco Campus.



POSING BEFORE THE Memorial Mall are (from left) Debbie Wood, Lynette Brown, Glenda Sali, and Kathey Wentz, members of the 1969-70 edition of the Broncettes drill team. These young ladies model new marching costumes which they and their sister members will be wearing during halftime activities of

the San Francisco 49'ers football game Oct. 5 to be televised nationally. The new uniforms consist of a white satin blouse and a reversible mini-skirt of blue and white trimmed in white. Director of the Broncettes is Hank Houst.

### 1969 Les Bois still available

BSC students, who have not as yet received a copy of the 1968-69 Les Bois, may pick up their annual in the Arbiter office any afternoon next week.

Former BSC students, who were enrolled for only one semester on a full-time basis, must remit \$2.50 at the cashiers' office in the Administration building before receiving their copy.

Any additional persons wishing to purchase a copy of last year's annual may do so by remitting \$5.00 at the cashiers' office.

### Coach readies BSC harriers

Ray Lewis, cross-country coach, urged Wednesday that any and all men students, who are not already participating in BSC sports and are interested in joining the cross-country squad, to please contact him in Room A of the Gym at their earliest convenience.

Lewis stated that the squad, already featuring some fine performers, is still in need of more personnel.

Among those mentioned are returning lettermen, Jim Hatcher and Herb Glassen, as well as Jim Muckey of Redmond, Oregon. Alex Ulanski, Calgary, Canada, and a Twin Falls two-miler, Bob Sloan.

Muckey, who placed seventh in the Oregon A-1 state track finals, is also a two-miler. Ulanski is an 880 man.

## Sports pressbook wins honors

Boise State College's Spring Sports Pressbook, produced under the direction of Don E. Liebendorfer, Jr. has been announced as one of the top ten brochures in the nation.

The twenty-four page booklet covered the spring sports of baseball, tennis, and track and field on the Boise State Campus. The brochure also included schedules, rosters, previous performances, biographic sketches, all-time records, and other complete details of the spring sports happenings at Boise State College.

The honor is awarded by the National Association of Intercollegiate Athletics (NAIA).

Is he? Or isn't he?

**THE Gay DECEIVERS**  
IN ABSOLUTELY DIVINE COLOR

Plus Peter Sellers in "The Party"

\$1.25 with BSC I.D. Cards

**VISTA** Now Playing

**Come One Come All!**  
**Broncos' First Birthday Party**  
**Friday, Sept. 12**  
**4p.m. 'till closing**

**1¢ (Penny) 1¢ per oz. of BEER**

**Free!**

Pool  
Pin Ball

**Free!**

**BRONCO HUT**

Broadway & Rossi

**HARRIS SLACKS**

**PIN STRIPED PERFECTION**

HARRIS TRADITIONAL IVY...PRESSED FOR LIFE!

...acknowledged by smart dressers everywhere, the Harris Men know how to look their best, neat and tailored in Traditional Ivy. Also plaids, checks or solids. Sizes 29 to 38.

**\$11.00**

**Ralph Davis**  
204 N. 8th  
Open Fridays 'til 9  
Where Style Begins