

12-7-1967

Boise College Roundup, December 7

Students of Boise College

Although this file was scanned from the highest-quality microfilm held by Boise State University, it reveals the limitations of the source microfilm. It is possible to perform a text search of much of this material; however, there are sections where the source microfilm was too faint or unreadable to allow for text scanning. For assistance with this collection of student newspapers, please contact Special Collections and Archives at archives@boisestate.edu.

Presidential Inauguration Scheduled



DR. AND MRS. J. B. BARNES look at an example of the invitations issued to all guests for the President's Inauguration. The inaugural ceremonies will be held Saturday for the installation of Dr. Barnes as the college's new president. All students and the public are invited to come to the inauguration and to the Inaugural Ball. Dr. Barnes has come to Boise from Yuma, Ariz., where he was president of Arizona Western College.

BOISE COLLEGE ROUNDUP

VOL. 5, NO. 12

THURSDAY, DEC. 7, 1967

BOISE, IDAHO

NATIONALLY-KNOWN JAZZ ENSEMBLE THRILLS BOISE COLLEGIATE AUDIENCE

Excellent was the only word that could be used to describe the concert by the Paul Winter Ensemble. The performance, held in the SUB on Nov. 30, was a great success.

The group preferred not to have their music called jazz, but referred to it as a combination of their three favorite influences—African, Israeli and Brazilian.

The versatility of the group was shown by the number of instruments each could play. They ranged from two African drums that resembled large garbage cans to a small African thumb piano, which gave the compositions a music box effect.

The audience called them back for one encore; there could have been more, but they chose to bow out.

A number of Paul Winter Ensemble albums are out, including: "Rio," "Jazz Meets the Basa Nova" and "Jazz Premiere; In Washington."

—Alfreda Kincaid

Calendar of Events

FRIDAY, DEC. 8—Student Recitals, 3:15 p.m. Choir concert, 8 p.m., Liberal Arts Bldg., room 106; Reception for Choir, Pres. dining room after concert.
 SATURDAY, DEC. 9—ACT Testing, 8 a.m., gymnasium; Presidential Inauguration, Reception, Ball, 3 p.m., Student Union.
 SUNDAY, DEC. 10—Choir concert, 8 p.m., Liberal Arts Bldg., room 106, followed by reception, West Ballroom, Student Union.
 MONDAY, DEC. 11—Band Concert, 8:15 p.m., Auditorium.
 TUESDAY, DEC. 12—Golden Z Club, noon, Liberal Arts Bldg., room 153; IK meeting, noon, Liberal Arts Bldg., room 107; Boise College vs. College of Southern Idaho, 8 p.m., gym.
 WEDNESDAY, DEC. 13—Ski Club meeting, noon, room S106.
 THURSDAY, DEC. 14—Piano rehearsal, 7-8 p.m., Auditorium.
 FRIDAY, DEC. 15—Student Recitals, 3:15 p.m., Auditorium; Annual Christmas program, 9:40-10:40 a.m., Auditorium.

LAST CHANCE

The '66-67 Les Bois year-books will be distributed during the week of Dec. 11-15 by members of Tau Alpha Pi from 9:30 a.m. to 3 p.m. in the booth in the SUB foyer, according to John MacMillan, publications advisor. Students must pick up their books during this week or forfeit their annuals.

YULE PROGRAM SET

The Inter-faith Council will hold its annual Christmas program Friday, Dec. 15, at 9:35 a.m. in the Music Auditorium. The BC Choir will sing and there will be a special guest speaker. For further information, contact Jay Scott, phone No. 342-5458.

Barnes To Be Installed As Administrative Chief

By RUTH RUSSELL
 Roundup Associate Editor

The official inauguration of Dr. John B. Barnes as president of Boise College will take place Saturday, Dec. 9, at 3 p.m. All students and public are invited to attend the ceremony, which will be held in the ballroom of the Student Union Building.

Installation ceremonies will begin with the academic processional led by delegates from Harvard University and the College of William and Mary, first and second oldest educational institutions in the U.S. They will be followed by delegates of 140 different educational institutions and the faculty of Boise College.

Also attending will be Idaho Secretary of State Pete Cenarrusa representing Governor Don Samuelson, the State Board of Education represented by Eldon W. Smith and the Boise College Board of Trustees.

Dr. Robert D. Clark, president of San Jose State College in California, will present the inaugural address.

Following the processional and invocation by Dr. Herbert E. Richards, Vice President W. L. Gottenberg, acting as master of ceremonies, will give the welcome.

The formal induction of the president will be conducted by John Tate, chairman of the BC Board of Trustees. Following this ceremony, the presentations will be made.

A medallion with the likeness of Dr. Barnes on one side and the college seal on the other side will be presented by the Associated Student Body along with academic mace presented by the Alumni Association.

Response by Dr. Barnes will follow after which the Boise College alma mater "Les Bois" will be sung by a Boise College men's quartet consisting of John Musgrove, David Gardner, Gary Bratt and David Runner.

Following the inauguration, the President and Mrs. Barnes will receive guests in the foyer of the Student Union from 5 to 6 p.m. A buffet dinner will be given at 6 p.m. in the Snack Bar of the SUB for all visiting delegates and representatives.

The Boise College Board of Regents and Inauguration Committee are invited to the President's dinner at 7 p.m. in the Presidents room of the SUB.

The Inaugural Ball will be held from 9 p.m. to midnight in the SUB Ballroom later that evening.

Entertainment will be provided by the Dick Turner Orchestra. The dress will be semi-formal with long or short formals for women and dark suits or tuxedos for men. There will be no admission charge. All students and friends of the college as well as participants in the program are encouraged to attend.

All of the above proceedings have been coordinated and planned by the Inaugural Committee. Chairman of the committee is Dr. C. T. Edleson, with Dean Helen Moore, secretary. Members are Dr. J. Alfred McCauslin, Miss Patricia Ourada, Thomas Rhodes of the Alumni Association, Ernie Weber, ASB president; Greg Charlton, Marcia Smith, student representative; and Bob Hough as social chairman in charge of the ball.

Members of the academic processional of the Inaugural Ceremony in order of their founding are as follows:

(Continued on Page 2, Col. 1)

COLLEGE HYMN LES BOIS

Splendor Sine Occasus
 Bright in the green of the Idaho forest
 Nestled in mountains majestic and tall
 Shrined in our hearts, Alma Mater unfailing
 Cast thy warm light on the lives of us all.

Chorus

Boise the beautiful, Boise the wonderful
 Hear, Alma Mater, the praise from our lips
 Shine from the strength of the Idaho forest
 Shine from the hills where the western sun dips.
 Bring us in honor to tasks of the future
 Help us with dignity onward to go
 Long in our days, Alma Mater beloved
 Burnish our paths with the gold of thy glow.

Political Scientists Seek Conference Applications

Students interested in being BC delegates to the Model United Nations Conference in Tucson, Ariz., on April 24-27, 1968, which will involve registration in the one seminar course, Political Science 74211, Page 183 of the catalog, should express their interest in writing to Avery Peterson, leaving a note at the faculty mailroom in the Administration Building.

Applicants will be asked to write an essay regarding their interest and why the student feels he would do a good job representing Australia at the conference.

Meistersingers Pick Soloists for Ceremony



PRACTICING for two winter concerts to be held Dec. 8 and 10 are Meistersinger soloists, from left, Janet Vetter, Pat Marckham, Donna Hutchings, Gary Bratt, John Musgroves, C. Griffith Bratt, director, and Lucy Ann Wallace. The programs will be presented in conjunction with the inauguration of Dr. John B. Barnes as President of Boise College to be held Saturday.

Barnes Inauguration —

(Continued from Page 1)

Distinguished guests expected to attend the inauguration are:

Bryan Jerald Johnson, A.B., LL.B., Alumnus, Harvard University (1636).
 Mrs. Joseph A. Eger, B.A., Alumna, College of William & Mary (1693).
 Robert W. Halliday, B.S., Alumnus, Yale University (1701).
 Edward J. Turk, B.S., Alumnus, University of Pennsylvania (1740).
 G. Nicholas Ifft, III, A.B., Alumnus, Princeton University (1746).
 Eugene C. Thomas, A.B., LL.B., Alumnus, Columbia University (1754).
 Alfred H. Rossomando, B.S., M.D., F.I.C.S., F.A.C.S., Alumnus, Rutgers (1766).
 Thor J. Fraser, A.B., Alumnus, Dartmouth College (1769).
 Lloyd E. Haight, LL.B., Alumnus, Georgetown University (1789).
 John W. Frink, B.S., M.S., Alumnus, University of North Carolina (1789).
 Mrs. Nancy S. Davidson, B.S., Alumna, University of Vermont (1791).
 Eugene P. Redmond, B.A., Alumnus, Bowdoin College (1794).
 Colonel James E. Maloney, Jr., B.S., Alumnus, U. S. Military Academy (1802).
 Donald S. Parmelee, M.A., Alumnus, West Chester State College (1812).
 Arthur Curtis Jones, Jr., A.M., M.D., Alumnus, University of Michigan (1817).
 James J. Coughlin, M.D., Alumnus, Saint Louis University (1818).
 Ralph McInnis Rosenberry, B.A., Alumnus, Amherst College (1821).
 Marcus W. Collins, B.A., M.A., A.M., Ph.D., Alumnus, G. Washington U. (1821).
 Francis E. Sexton, B.S., Alumnus, University of Alabama (1831).
 John C. Sanborn, A.B., A.M., LL.B., Alumnus, Oberlin College (1833).
 Mrs. Richard N. White, A.A., B.A., Alumna, Stephens College (1833).
 Mary Louise Holdren, M.D., Alumna, Tulane University (1834).
 Edward W. Cleary, A.B., Alumnus, DePauw University (1837).
 Janice Kysor Van Schuyler, B.A., Alumna, Knox College (1837).
 John McClellan Ocker, Jr., M.D., Alumnus, Duke University (1838).
 Miles E. Thomas, M.D., Alumnus, University of Missouri (1839).
 E. F. Sestero, B.S., M.D., Alumnus, Fordham University (1841).
 Mrs. Fronie Murray Hall, B.S., Alumna, Beloit College (1846).
 Lois M. Richards, B.A., Alumna, Bucknell University (1846).
 Mrs. George H. Fields, B.A., Alumna, Grinnell College (1846).
 Warren B. Ross, Jr., B.S., M.D., Alumnus, University of Iowa (1847).
 John D. Hutchison, M.B.E., Alumnus, University of Mississippi (1848).
 Mrs. C. Kenneth Farnsworth, B.S., Alumna, Eastern Michigan University (1849).
 Gilbert H. Michalk, B.S., C.L.U., Alumnus, Texas A&M University (1849).
 B. Gray Warner, Alumni Regent, Northwestern University (1851).
 Donald J. Eaton, B.S., J.D., Alumnus, University of Santa Clara (1851).
 Mrs. Richard Newton, B.A., Alumna, Mills College (1852).
 Mrs. Joan Odze, B.S., Alumna, Newark State College (1855).
 Robert D. Clark, A.B., M.A., Ph.D., President, San Jose State College (1857).
 Robert Franklin Holdren, Ph.D., Alumnus, Iowa State University (1858).
 Merlin Sherman Young, A.B., LL.B., LL.D., Alumnus, Whitman College (1859).
 Elaine Wagahoff, B.A., Alumna, Augustana College (1860).
 Mrs. Hubert Martin, B.S., Alumna, Louisiana State U. and Mechanical College System (1860).
 Lester Lyle McCrery, B.A., M.A., Ph.D., Alumnus, Univ. of Washington (1861).
 Mrs. Eugene H. Walker, A.B., M.A., Alumna, Vassar College (1861).
 Nell Smull, B.S., M.S., Alumnus, Kansas State University (1863).
 Mrs. Army Armstrong, B.A., Alumna, University of Denver (1864).
 Noah W. Klein, M.D., Alumnus, University of Kentucky (1865).
 The Rev. James Donald Skinner, B.A., B.D., Alumnus, Carleton College (1866).
 Robert T. Rudkin, B.S.E., M.A., Alumnus, Northeast Missouri S.T.C. (1867).
 Jerome J. Dahmen, B.S., M.S., Ph.D., Alumnus, Oregon State University (1868).
 Darphus Omeron, M.D., Alumnus, Wayne State University (1868).
 Mrs. Fred Jayo, B.E., Alumnus, Wisconsin State Univ.-Whitewater (1868).
 The Rev. Wendell L. Coe, S.T.M., Alumnus, Boston University (1869).
 Dale O. Hutt, B.S.M.E., Alumnus, Purdue University (1869).
 Mrs. Herman Memmelar, B.S., Alumna, Southern Illinois University (1869).
 H. Norris Lynch, B.S.E., Alumnus, Colorado State University (1870).
 Ralph Jones, B.S., Alumnus, Ohio State University (1870).
 Edwin E. Wilkinson, B.A., M.S., Alumnus, University of Akron (1870).
 Alice McCullough Hunt, B.A., M.A., Alumna, Wellesley College (1870).
 Scott Jones, B.S.Ed., Alumnus, Central Missouri State College (1871).
 Mary Jane McClary, Alumna, University of Nebraska (1871).
 Darrell C. Wilson, B.S., M.A., Ph.D., Alumnus, University of Oregon (1872).
 Spencer L. Brown, B.A., Alumnus, University of Toledo (1872).
 Mrs. Gilbert Henry Michalk, A.B., Alumna, Texas Christian University (1873).
 Marian Stark Kimble, B.A., Alumna, Smith College (1873).
 Conan Mathews, Dean Emeritus, Coll. of Fine Arts, Brigham Young U. (1876).
 Thomas P. Grober, B.A., Alumnus, University of Northern Iowa (1876).
 Donald L. Pape, D.D.S., Alumnus, Creighton University (1878).
 Mrs. A. Ronald Oakes, A.B., Alumna, Radcliffe College (1879).
 Ray C. Jolly, M.F.S., D.P.A., Alumnus, University of So. California (1880).
 Mrs. Lois K. Ormsby, A.B., Alumna, Drake University (1881).
 John W. Lowry, B.S., Alumnus, General Beadle State College (1881).
 David D. Hoene, Ph.B., M.A., Alumnus, Marquette University (1881).
 Francis B. Johnson, B.S., Alumnus, South Dakota State University (1881).
 Louise S. Rencher, B.S., Alumna, University of Connecticut (1881).
 E. Richard E. Chace, B.S., Alumnus, Arizona State University (1885).
 S. R. Mitchell, B.S.E.E., M.S., Alumnus, S. Dak. School of Mines & Tech. (1885).
 David L. Moore, M.S., Alumnus, University of Arizona (1885).
 Forrest D. Stone, B.S.C.E., Alumnus, University of Wyoming (1886).
 William Patrick Brady, B.Ed., Alumnus, Gonzaga University (1887).
 Robert S. Gibb, A.B., M.Ed., Alumnus, Nebraska Wesleyan University (1887).
 Willis L. Burnham, B.A., M.Ed., Alumnus, Pomona College (1887).
 George Werner, Ph.D., Alumnus, Teachers College, Columbia University (1887).
 Luther Jones, B.S., Alumnus, New Mexico State University (1888).
 John L. Clarke, A.B., M.A., Ph.D., Alumnus, Ricks College (1888).
 Mrs. Meredith Groves, B.A., Alumna, Temple Buell College (1888).
 William R. Tregoning, M.D., Alumnus, University of Puget Sound (1888).
 Paul B. Larsen, B.S., Alumnus, Utah State University (1888).
 Ernest Hartung, B.S., M.A., Ph.D., President, University of Idaho (1889).
 Marie Flekke, M.A., Alumna, University of New Mexico (1889).
 Joseph W. Chatburn, A.B., M.S., Ed.D., Chairman, Department of Education, Eastern Washington State College (1890).
 Boyd Henry, B.S., M.S., Alumnus, Morrisville College (1890).
 James D. McBarry, A.B., Alumnus, Stanford University (1890).
 Peter James Boyer, B.A., Alumnus, Washington State University (1890).
 David W. Bates, B.S.C.E., Alumnus, California Institute of Technology (1891).
 Warren B. Knox, B.A., M.A., LL.D., President, College of Idaho (1891).
 Stanley T. Perisho, B.A., Area Counselor, George Fox College (1891).
 H. Karl Ladwig, B.D., Ph.D., Alumnus, University of Chicago (1892).
 Edgar D. Barnes, B.S.M.E., Alumnus, Montana State College of Mineral Science and Technology (1893).
 Howard N. Watenpaugh, M.S., Alumnus, Montana State University (1893).
 Margit Castle, B.A., M.Ed., Alumna, University of Montana (1893).
 Mrs. Ruth A. Apple, B.A., Alumna, University of Tulsa (1894).
 Barton A. Dowdy, B.S.L., B.D., Ph.D., President, N.W. Christian College (1895).
 William Dexter Patrick, B.M.E., M.M., Alumnus, Wichita State University (1895).
 Wayne E. White, A.A., B.S., M.A., Alumnus, Northern Arizona Univ. (1899).
 Lloyd I. Watkins, B.S., M.S., Ph.D., Exec. Vice Pres., Idaho State Univ. (1901).
 Truman G. Scott, B.S., Alumnus, Northwest Missouri State College (1905).
 W. Russell Hamon, B.S., M.S., Alumnus, Eastern Kentucky University (1906).
 Carl Swanholm, Ph.D., Alumnus, University of Hawaii (1907).
 Herbert W. Runner, M.S., Alumnus, University of Redlands (1907).
 Mrs. John B. Harms, B.A., Alumna, Montclair State College (1908).
 Clarence Wherry, M.A., Alumna, Kent State University (1910).
 John E. Riley, A.M., B.D., President, Northwest Nazarene College (1913).
 Margaret M. Chapman Peek, M.A., Alumna, University of Alaska (1917).
 Jimmie L. Faulkner, B.S., M.A., Alumnus, Ball State University (1918).
 Phillip A. Ranke, B.A., M.A., Alumnus, Adams State College (1921).
 Clint T. Bugg, B.S., M.A.Ed., Alumnus, Murray State University (1922).
 Stanley J. Heywood, B.A., B.Ed., A.M., Ph.D., Pres., East. Mont. College (1925).
 Doll Shaw Obee, A.B., Alumna, Scripps College (1926).
 Roy L. Skeen, Ed.D., Prof. of Psychology, former Dean of Instruction, Eastern Oregon College (1929).
 Raymond L. Stone, B.A., B.Ed., M.Ed., Dean of Faculty, N. Idaho J.C. (1939).
 Lt. Col. Charles C. Banks, Air Force Academy Liaison Offices Coordinator, United States Air Force Academy (1935).

Those attending the ceremonies from learned and professional societies are:

T. C. Bird, M.A., American Association of School Administrators (1865).
 Vernon C. Bushnell, A.B., M.S., Ph. D., American Chemical Society (1876).
 Richard G. Elliott, M.L.S., American Library Association (1876).
 Kelvin D. Hartwell, B.S., Phi Delta Kappa (1906).
 Robert C. Day, B.S., M.S., Idaho Education Association.
 John L. Clarke, A.B., M.A., American Council on Education (1918).
 Martha D. Jones, M.D., Western Interstate Comm. on Higher Education (1951).
 Robert S. Gibb, A.B., M.Ed., Eight-State Project (1966).

Many colleges, universities and organizations have sent congratulatory letters to Dr. John Barnes.

Those sending delegates include: American Chemical Society, George Washington University, Yale University, Tulane University, Southern Illinois University, Vassar College, University of Missouri, Iowa State University, University of Chicago, University of New Mexico and California Institute of Technology.

Those sending congratulations and regret they cannot attend are: Pennsylvania State University, University of Maryland, Bowling Green State University, Texas Southern College, University of South Carolina, University of North Dakota, Reed College, Frostburg State College, University of Alaska, San Fernando Valley State College and University of Wisconsin. Also sending letters were Seattle Pacific College, University of Texas at El Paso, Washington University, Nevada Southern University, University of Nevada, University of Oklahoma, University of Rochester, Towson State College, University of Texas at Arlington and Rollins College.

Congratulations were also received from Bucknell University, Sonoma State College, Phi Beta Kappa, Ripon College, National College of Education, Pepperdine College, University of Montana, Southeast Missouri State College, Alabama College and The Officers and Council of the National Academy of Sciences of the United States of America.

These letters are colorfully displayed on the bulletin board in the foyer of the Student Union Building.

SPANISH CLUB

New officers of the Spanish Club are Dennis Ward, president; Marilyn Tanner, vice president; Linda Hanzon, secretary; and Yvonne Jackson, treasurer. The club meets each Wednesday at 12:15 p.m. in room 215 of the Liberal Arts Building. Dr. Luis Valverde is club advisor.

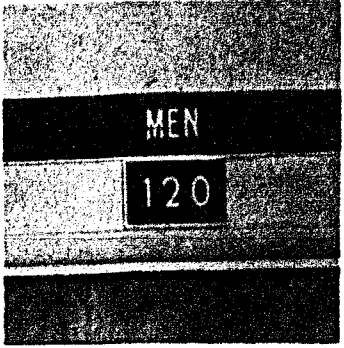
BRONCETTE TRY-OUTS

Girls! Would you like to perform at Boise College basketball games; take trips to other colleges and have fun, fun, fun? Then, try out for the Broncettes' basketball drill team, which is now being formed. Hank Houst, director of the team, will be holding try-outs Wednesday, Dec. 13, at noon in the BC gym.

DIRECTORY

ADMINISTRATIVE	
PRESIDENT	103
VICE PRESIDENT	103
DEAN OF FACULTY	105
BUILDINGS & GROUNDS	107 B
BUSINESS MANAGER	117
DEAN OF STUDENTS	
DEAN OF MEN & WOMEN	108
DIRECTOR OF ADMISSION	100
REGISTRAR	
INFORMATION PROCESSING	110
CASHIER	115
COUNSELING & DIAGNOSIS	120

IT'S NOT EVERY DAY that the Men's Room receives cases for counseling and diagnosis. In this case the whole thing was an unintentional mistake. However, its effect becomes embarrassingly confusing when directed to the unknowing victim. The directory is seen as you enter the west side door of the Administration Building.



OAKES DONATES CLOCK

W. E. Oakes of the Epcon Inc. Zeon Signs recently donated an illuminated outdoor clock, four feet by four feet, to the Circle K service club on campus. The club members remodeled the timepiece as a club project and presented the clock to President John B. Barnes for the BC campus.

STUDENTS REVIEW ONE-ACT PLAYS BY IONESCO

At one time or another, we all develop the belief that we have seen, heard or done something that cannot be surpassed in brilliance or stupidity. Then we discover we were wrong.

To say that last week's two one-acts were different is to make the proverbial understatement. To say that they were, in the case of The Lesson, weird and in the case of The Bald Soprano, absurd, is to make a near miss. In all my associations with play production and viewing, I have never seen anything so extreme.

But this is exactly the reaction that should be gained from these plays. Looking back over what admittedly is some time, I thought Lear was excellent and The Public Eye was pretty good, but now I must rate them each lower. True, the type of plays are different and comparisons are, as they say, odious, but the quality still stands out. I liked these one-acts!

Then I tried conceiving of someone who could have better performed the part of the professor in The Lesson than did Nathan Davis. The only person I could come up with was Peter Lorrie, and then, with all respect to that actor, I wonder if his slow, careful speech could have handled the intricate complexities of the confusing lines as well as Davis.

Janet Vetter was well chosen for the part of the student (in fact, I could almost see myself in her helpless position with Dr. Obee in the opposite place). Vetter could do with more experience but there were some very good moments, too. I only hope I do not have many more nightmares because of the death grin.

It is hard to rate the performance of Kathy Brown simply because it's hard to imagine someone with her looks as being stupid, almost heartless, and certainly dominating.

The Bald Soprano was by far one of the funniest plays I've seen in a long while, although after a time some events were predictable. At any rate, Lynda Callen has improved tremendously since The Public Eye. Her accent was quite good (although her natural voice was a help) and her over-all performance was probably the best in this play, with the possible exception of Jan Perkins as the maid.

My family has pictures taken of my beautiful but proper great aunts nearly one hundred years ago, and Opal Cooper reminded me of them. However, her performance had not changed much from last year. Meanwhile, John Poulson was still John Poulson.

Ron Oliver

A hearty congratulation must be extended to the Boise College drama department for their outstanding performances in the two plays by Ionesco. Barring the technical handicaps under which the two casts and crews worked, the plays were "perfect."

In The Lesson, the weird musical prelude was only a forecast for the storm that followed as the professor, played by Nathan Davis, plunged into exasperating and confusing drama.

Supremely portraying the role, Nathan exploded in unrelated technical explanations of mathematics and the Indo-Spanish language. He gradually increased the dramatic tempo to the entrancing point at which he became so involved in his explanation of the word "knife" that he murdered his 40th private student.

During the entire play, Maria (Kathy Brown) acted as the play forecaster by injecting hints of the prevailing doom. The student, portrayed by Janet Vetter, was then removed from the scene of the crime as the drama slowed to the

appearance of a new student.


Although the play appeared to possess no significant plot, the immortal conflict of student and teacher was exploited to the utmost.

Following the confusion of emotion created by "The Lesson," Ionesco's "The Bald Soprano" thrust the audience into pandemonium. Utter contradiction and hilarious confusion prevailed as the performers depicted a social gathering of friends.

Before the evening of social graces had ended, the cast had flown into a chair-upsetting, floor-dusting frolicsome fight. After the outburst had settled, the cast returned to the beginning normalcy of life.

Here, as in "The Lesson," the ritual of life with its oddities and humor were clearly exhibited. Both plays by Ionesco dramatized these factors of life. The casts played their roles with exceptional brilliance and made the plays flow with emphatic, dramatic tempo and emotional variation.

—Kathy Amos



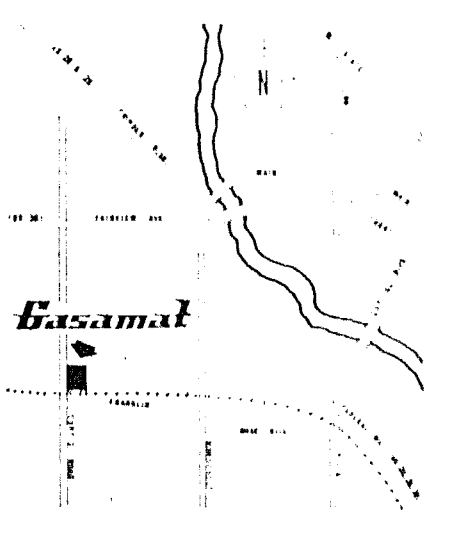
COIN OPERATED

Save Time! Save Money!

When You Serve Yourself

to

HIGHEST QUALITY GASOLINE



BOISE -- NORTH CURTIS AND FRANKLIN

Professors Announce Torture Hours

Boise College Fall Semester, 1967 Examination Schedule

Classes carrying two or less credits will hold final examinations during the last regularly scheduled class meeting of the semester.

Evening and Mountain Home Air Force Base classes will hold examinations during the last or next to the last regularly scheduled night.

The following is the schedule for all day courses that carry three (3) or more credit hours and meet in lecture at least three times a week. The courses listed directly below cannot be included in this schedule, because they have fewer than three hours of lecture. Examination time for these classes will be arranged by the instructors:

Course No.	Sec.	Title	Room
16-321-01		El Sch Art Meth	Peck
38-25-01		Microbiology	Papenfuss
38-361-01		Field Biology	Belknap
39-101-01		Gen Botany	Obce
43-103-01		Clothing	Moore
43-103-02		Clothing	Moore
53-257-01		El Org Chem	Stark
63-331-01		Found of Ed	Dugger
70-151-01		US History	Ourada
70-152-01		US History	Caylor

MONDAY, DEC. 18, 1967

8:00 a.m. - 10:00 a.m. (Noon Classes)

Course No.	Sec.	Title	Room
01-101	13	Prin of Acctg	A218
01-201	01	Prin of Econ	A210
06-101	05	Intro to Bus	A114
06-101	02	Business Law	A114
06-201	03	Bus Statistics	S116
11-201	01	Report Writing	A202
20-101	07	Remedial Eng	L211
20-101	08	Remedial Eng	L212
20-101	09	English Comp	R103
20-101	25	English Comp	R105
20-101	26	English Comp	R107
20-101	27	English Comp	R102
20-101	28	English Comp	R102
20-101	29	English Comp	R202
20-101	01	Medical E Lit	L221
20-101	01	Prob & Math	S217
20-101	01	US History	L209
20-101	01	Hist of Americas	L214
20-101	01	Gen Psychology	A215
20-101	01	Statistic Methods	R203
20-101	01	Intro Sociology	G102
20-101	01	Social Problems	A102
20-101	01	Prin Archaeology	A905

MONDAY, DEC. 18, 1967

10:10 a.m. - 12:10 p.m. (1 p.m. Classes)

Course No.	Sec.	Title	Room
01-101	06	Prin Accounting	A204
01-101	01	Prin Accounting	A201
01-101	01	Prin Accounting	A207
01-101	01	Prin Accounting	A210
01-101	01	Prin Accounting	A213
01-101	01	Prin Accounting	A216
01-101	01	Prin Accounting	A219
01-101	01	Prin Accounting	A222
01-101	01	Prin Accounting	A225
01-101	01	Prin Accounting	A228
01-101	01	Prin Accounting	A231
01-101	01	Prin Accounting	A234
01-101	01	Prin Accounting	A237
01-101	01	Prin Accounting	A240
01-101	01	Prin Accounting	A243
01-101	01	Prin Accounting	A246
01-101	01	Prin Accounting	A249
01-101	01	Prin Accounting	A252
01-101	01	Prin Accounting	A255
01-101	01	Prin Accounting	A258
01-101	01	Prin Accounting	A261
01-101	01	Prin Accounting	A264
01-101	01	Prin Accounting	A267
01-101	01	Prin Accounting	A270
01-101	01	Prin Accounting	A273
01-101	01	Prin Accounting	A276
01-101	01	Prin Accounting	A279
01-101	01	Prin Accounting	A282
01-101	01	Prin Accounting	A285
01-101	01	Prin Accounting	A288
01-101	01	Prin Accounting	A291
01-101	01	Prin Accounting	A294
01-101	01	Prin Accounting	A297
01-101	01	Prin Accounting	A300
01-101	01	Prin Accounting	A303
01-101	01	Prin Accounting	A306
01-101	01	Prin Accounting	A309
01-101	01	Prin Accounting	A312
01-101	01	Prin Accounting	A315
01-101	01	Prin Accounting	A318
01-101	01	Prin Accounting	A321
01-101	01	Prin Accounting	A324
01-101	01	Prin Accounting	A327
01-101	01	Prin Accounting	A330
01-101	01	Prin Accounting	A333
01-101	01	Prin Accounting	A336
01-101	01	Prin Accounting	A339
01-101	01	Prin Accounting	A342
01-101	01	Prin Accounting	A345
01-101	01	Prin Accounting	A348
01-101	01	Prin Accounting	A351
01-101	01	Prin Accounting	A354
01-101	01	Prin Accounting	A357
01-101	01	Prin Accounting	A360
01-101	01	Prin Accounting	A363
01-101	01	Prin Accounting	A366
01-101	01	Prin Accounting	A369
01-101	01	Prin Accounting	A372
01-101	01	Prin Accounting	A375
01-101	01	Prin Accounting	A378
01-101	01	Prin Accounting	A381
01-101	01	Prin Accounting	A384
01-101	01	Prin Accounting	A387
01-101	01	Prin Accounting	A390
01-101	01	Prin Accounting	A393
01-101	01	Prin Accounting	A396
01-101	01	Prin Accounting	A399
01-101	01	Prin Accounting	A402
01-101	01	Prin Accounting	A405
01-101	01	Prin Accounting	A408
01-101	01	Prin Accounting	A411
01-101	01	Prin Accounting	A414
01-101	01	Prin Accounting	A417
01-101	01	Prin Accounting	A420
01-101	01	Prin Accounting	A423
01-101	01	Prin Accounting	A426
01-101	01	Prin Accounting	A429
01-101	01	Prin Accounting	A432
01-101	01	Prin Accounting	A435
01-101	01	Prin Accounting	A438
01-101	01	Prin Accounting	A441
01-101	01	Prin Accounting	A444
01-101	01	Prin Accounting	A447
01-101	01	Prin Accounting	A450
01-101	01	Prin Accounting	A453
01-101	01	Prin Accounting	A456
01-101	01	Prin Accounting	A459
01-101	01	Prin Accounting	A462
01-101	01	Prin Accounting	A465
01-101	01	Prin Accounting	A468
01-101	01	Prin Accounting	A471
01-101	01	Prin Accounting	A474
01-101	01	Prin Accounting	A477
01-101	01	Prin Accounting	A480
01-101	01	Prin Accounting	A483
01-101	01	Prin Accounting	A486
01-101	01	Prin Accounting	A489
01-101	01	Prin Accounting	A492
01-101	01	Prin Accounting	A495
01-101	01	Prin Accounting	A498
01-101	01	Prin Accounting	A501
01-101	01	Prin Accounting	A504
01-101	01	Prin Accounting	A507
01-101	01	Prin Accounting	A510
01-101	01	Prin Accounting	A513
01-101	01	Prin Accounting	A516
01-101	01	Prin Accounting	A519
01-101	01	Prin Accounting	A522
01-101	01	Prin Accounting	A525
01-101	01	Prin Accounting	A528
01-101	01	Prin Accounting	A531
01-101	01	Prin Accounting	A534
01-101	01	Prin Accounting	A537
01-101	01	Prin Accounting	A540
01-101	01	Prin Accounting	A543
01-101	01	Prin Accounting	A546
01-101	01	Prin Accounting	A549
01-101	01	Prin Accounting	A552
01-101	01	Prin Accounting	A555
01-101	01	Prin Accounting	A558
01-101	01	Prin Accounting	A561
01-101	01	Prin Accounting	A564
01-101	01	Prin Accounting	A567
01-101	01	Prin Accounting	A570
01-101	01	Prin Accounting	A573
01-101	01	Prin Accounting	A576
01-101	01	Prin Accounting	A579
01-101	01	Prin Accounting	A582
01-101	01	Prin Accounting	A585
01-101	01	Prin Accounting	A588
01-101	01	Prin Accounting	A591
01-101	01	Prin Accounting	A594
01-101	01	Prin Accounting	A597
01-101	01	Prin Accounting	A600
01-101	01	Prin Accounting	A603
01-101	01	Prin Accounting	A606
01-101	01	Prin Accounting	A609
01-101	01	Prin Accounting	A612
01-101	01	Prin Accounting	A615
01-101	01	Prin Accounting	A618
01-101	01	Prin Accounting	A621
01-101	01	Prin Accounting	A624
01-101	01	Prin Accounting	A627
01-101	01	Prin Accounting	A630
01-101	01	Prin Accounting	A633
01-101	01	Prin Accounting	A636
01-101	01	Prin Accounting	A639
01-101	01	Prin Accounting	A642
01-101	01	Prin Accounting	A645
01-101	01	Prin Accounting	A648
01-101	01	Prin Accounting	A651
01-101	01	Prin Accounting	A654
01-101	01	Prin Accounting	A657
01-101	01	Prin Accounting	A660
01-101	01	Prin Accounting	A663
01-101	01	Prin Accounting	A666
01-101	01	Prin Accounting	A669
01-101	01	Prin Accounting	A672
01-101	01	Prin Accounting	A675
01-101	01	Prin Accounting	A678
01-101	01	Prin Accounting	A681
01-101	01	Prin Accounting	A684
01-101	01	Prin Accounting	A687
01-101	01	Prin Accounting	A690
01-101	01	Prin Accounting	A693
01-101	01	Prin Accounting	A696
01-101	01	Prin Accounting	A699
01-101	01	Prin Accounting	A702
01-101	01	Prin Accounting	A705
01-101	01	Prin Accounting	A708
01-101	01	Prin Accounting	A711
01-101	01	Prin Accounting	A714
01-101	01	Prin Accounting	A717
01-101	01	Prin Accounting	A720
01-101	01	Prin Accounting	A723
01-101	01	Prin Accounting	A726
01-101	01	Prin Accounting	A729
01-101	01	Prin Accounting	A732
01-101	01	Prin Accounting	A735
01-101	01	Prin Accounting	A738
01-101	01	Prin Accounting	A741
01-101	01	Prin Accounting	A744
01-101	01	Prin Accounting	A747
01-101	01	Prin Accounting	A750
01-101	01	Prin Accounting	A753
01-101	01	Prin Accounting	A756
01-101	01	Prin Accounting	A759
01-101	01	Prin Accounting	A762
01-101	01	Prin Accounting	A765
01-101	01	Prin Accounting	A768
01-101	01	Prin Accounting	A771
01-101	01	Prin Accounting	A774
01-101	01	Prin Accounting	A777
01-101	01	Prin Accounting	A780
01-101	01	Prin Accounting	A783
01-101	01	Prin Accounting	A786
01-101	01	Prin Accounting	A789
01-101	01	Prin Accounting	A792
01-101	01	Prin Accounting	A795
01-101	01	Prin Accounting	A798
01-101	01	Prin Accounting	A801
01-101	01	Prin Accounting	A804
01-101	01	Prin Accounting	A807
01-101	01	Prin Accounting	A810
01-101	01	Prin Accounting	A813
01-101	01	Prin Accounting	A816
01-101	01	Prin Accounting	A819
01-101	01	Prin Accounting	A822
01-101	01	Prin Accounting	A825
01-101	01	Prin Accounting	A828
01-101	01	Prin Accounting	A831
01-101	01	Prin Accounting	A834
01-101	01	Prin Accounting	A837
01-101	01	Prin Accounting	A840
01-101	01	Prin Accounting	A843
01-101	01	Prin Accounting	A846
01-101	01	Prin Accounting	A849
01-101	01	Prin Accounting	A852
01-101	01	Prin Accounting	A855
01-101	01	Prin Accounting	A858
01-101	01	Prin Accounting	A861
01-101	01	Prin Accounting	A864
01-101	01	Prin Accounting	A867

Inventory Team Scouts Campus

By MIKE SCHNDELE
Roundup Staff Writer

A grant from the Idaho State Commission for Higher Education Facilities is making it possible for Boise College to inventory all its buildings and to determine to what extent each room in each building is being used each hour of the day.

Dr. Gerald R. Reed, BC's academic affairs coordinator, is heading the inventory project. Working under him is the college's Facilities Inventory and Space Utilization team, consisting of team leader Omer Boardman and team members Gary Williams, John Squire and Gerald Glave.

The Boise College Facilities Inventory and Space Utilization team has until March 1, 1968 to complete its study. The team began the project in October of this year.

As outlined in the project's procedure manual, "the primary objectives to be accomplished through the facilities and space utilization inventory are to provide the data necessary to plan intelligently for meeting future facilities construction needs, and to provide some of the data necessary for statewide

comprehensive planning for higher education." Additional purposes or objectives to be accomplished might include, but not necessarily be limited to: comparing time-space ratios of public service functions among Idaho institutions and with other states institutions; projecting facilities construction needs and comparing facility construction needs with neighboring institutions.

When asked just what information the team had to gather, Dr. Reed said besides finding information on the heating, lighting, roofing and flooring, the team had to measure every room or useable space in the 35 to 40 college buildings. This included the measuring of such things as boiler chimneys to attics and basements.

At present, the team has compiled about 33 percent of the required information. This has involved the working of about 30 hours a week apiece for each of the team members. If this rate is continued the project should be completed before the required time, according to Dr. Reed. However, with architectural changes being made even at the present, the team will have to re-check several campus areas.

Dr. Reed added that once the study is complete, plans for updating the gathered information will be put into practice every

year, to keep the computerized information accurate.

PI SIGS PLAN DANCE

The Pi Sigma Sigma fraternity will sponsor a Christmas dance for members and their dates at the Knights of Columbus Hall, Dec. 20 at 8:00 p.m. Dress is casual.

RAZOR CUT
NEW - STYLING - NEW
for Men and Boys
— Also 5 Chairs —
CECIL'S
Barber Shop
1205 Broadway 342-2933

SKI PACKAGE

Boots
Skis
Bindings
Poles
Safety Strap
Carry Bag

74.95
REG. 105.70

Sib Kleffner

SKI SHOPS
814 Jefferson 930 Vista

14 KARAT GOLD
Pendants
Gift-Boxed!

A. Exotic genuine Jade and diamond pendant. 14 Kt. gold. **28.76**
75c Weekly

B. Glamorous-genuine Black Star pendant. 14 Kt. gold. **29.83**
75c Weekly

C. Exciting cultured pearl Star pendant. 14 Kt. gold. **14.88**
50c Weekly

D. Exquisite gold cross set with fiery diamond. 14 Kt. gold. **16.88**
50c Weekly

E. Elegant and unusual. 14 Kt. gold with center diamond. **39.92**
75c Weekly

F. Opulent Opal set in 14 Kt. gold. So dramatic. **29.64**
75c Weekly

G. Blue Linde Star and diamond pendant. A beauty. **44.00**
1.00 Weekly

H. For young moderns. 14 Kt. gold and cultured pearl. **3.88**
50c Weekly

I. Flattering Biwa cultured pearls in floral cluster and diamond. 14 Kt. **49.90**
1.00 Weekly

All with matching 14 Kt. Gold Chains!

CALL
Jewelers

1004 VISTA AVE.
Phone 344-3201

215 NORTH 8TH
Phone 343-3444

Convenient Credit Terms

FREE HAMBURGER



When you buy one at regular price -- 35c

This is our Deluxe Burger with Irish Immigrant Sauce... makes a burger taste like steak!

This coupon good through December 18

Broadway DRUMSTICK
1019 Broadway

Frostop DRUMSTICK
3344 State Street

ATTENTION!

THE 1966-67 YEARBOOKS WERE COMPLETED AFTER SCHOOL LET OUT LAST SPRING, AND MANY STUDENTS DID NOT RECEIVE THEIR COPY.

There are still a number to be handed out. Tau Alpha Pi is entering into this situation as a club project. The yearbooks may be obtained at the ticket booth at the entrance to the Student Union Building from December 11 thru 15 from 9:00 a.m. to 3:00 p.m. each day.

Yearbooks are available ONLY TO THOSE ENROLLED ON FULL TIME TWO-SEMESTER BASIS LAST YEAR . . . OR, TO THOSE ENROLLED FOR ONE SEMESTER ON FULL TIME BASIS AND WHO PRESENT A \$1.50 RECEIPT FROM THE COLLEGE CASHIER -- Administration Building. They will not be given to part-time students.

NOTE: This is your very last chance to pick up your annual. They will not be handed out after 3:00 p.m. on December 15th.

THIS IS A TAU ALPHA PI SERVICE PROJECT

BRONCOS TRAVEL TO BATTLE NIJC, IDAHO FRESHMEN

By JEFF HARTSHORNE
Roundup Sports Writer

The Boise College Broncos run into a crowded slate of activity this weekend as they readied for trips to North Idaho Junior College on Dec. 7, then to Moscow, where they will face the University of Idaho frosh on Dec. 8. The Broncos return home for a clash with the Golden Eagles of Southern Idaho on Dec. 12.

The NIJC roster consists of 17 men, of which only three are returning lettermen. They are center Don Barnes, a 6'9" sophomore, who was an All-American at Coeur d'Alene High School; Bill Broderick, a 6'2" forward and a high school All-State selection at Missoula, Mont., and Bill Scheutz, a 6' guard, also of Coeur d'Alene.

In two outings with NIJC last year, the Broncos came out on top both times and appear capable of the same this season as the Cardinals show lack of experience, with freshmen making up the majority of the squad.

The University of Idaho frosh, whom the Bronco club will meet in a pair of weekend contests, consists of a host of Idaho high school standouts playing this year for the Vandals. They include ex-Meridian stars Mike Hagler, Pat Brown and Darwin Walters; a valuable boy from Capital of Boise, Keith Hessing, and an All-State standout, Larry Brainar of Kellogg.

The Broncos see a very determined team Dec. 12 when the Southern Idaho Golden Eagles swoop into Boise College territory to contend for the honor of being the best junior college in the south Idaho area. The action will be the best as the Big Birds seem to be ever ready to sink their talons into the BC Broncos.



MEET THE BOISE COLLEGE BRONCOS: Rodell Hill (24), Bill Otey (22), and Wendy Hart (20) as they are caught in the "ballet action" of bucketball. Of the three boys, who are all second year starters, Otey is the tallest. Bill's height of 6'5½" makes his effort doubly sure. Hill and Hart are 6'2" and 6'1" respectively. Rodell can be fast and furious on the court when it means the difference between a win or a loss, and Wendy can pop up anywhere to drop a ball through the nylon for two points.

Patronize Our Advertisers

ICAC REPLACES W. L. GOTTENBERG

GRAND JUNCTION, Colo. — Jay Tolman will take over as executive secretary of the Intermountain Collegiate Athletic Conference next August, replacing W. L. Gottenberg, vice president of Boise College.

Tolman is Mesa College's faculty representative.

Gottenberg resigned the post since Boise becomes a four-year college next year.

Tolman is a former coach and athletic director at Mesa College, and several years served as Region 9 director of the National JC Athletic Association.

"WIDE WINK MIRROR"

Rear View Safety Mirror
Features: 300% more rear vision, 180 degree view six lanes wide (Installation free)

This station has the only franchise in So. Boise area on this unique mirror

ALSO: Remember to get your snow tires before it's too late.

BOB'S BROADWAY SHELL
1005 BROADWAY 342-9901

GUITARS



EXCELLENT SELECTION OF CLASSIC, FOLK and ELECTRIC GUITARS

Yamaha - Epiphone - Espana Harmony
Accessories for All Instruments

Peebles-Winters Music

720 Idaho Phone 343-1014

WEIGHT LIFTERS PREPARE BODIES FOR EVENTUAL ATHLETIC CONTESTS

By AET GALUS
Roundup Sports Editor

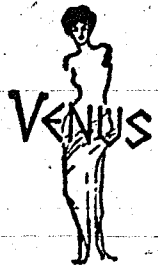
Old football players never die; they just smell that way. In fact they only smell that way when they are doing the only thing they know best—keeping physically fit.

Every afternoon in the weight room beneath the gymnasium, guys gather to replay football games, kid around, and lift weights. Many are interested primarily in improving their bodies, yet a few are awaiting competition in baseball, track and football.

Last year the athletic department purchased a weight machine to replace the disk-and-collar weight sets that had suffered from years of extensive use. The new system uses series of pulleys, levers, and bars to increase or decrease the lift-load.

Gordon Stewart, a Canadian student who broke his ankle in football practice toward the end of the season, began working out while he still was encased in "physicians' mortar." Steve Svitak used the machine's works every day after workouts to increase his potential.

Weight lifters, as they improve, are challenging each other constantly. At the moment Steve Hilton and George Saphire are working toward a goal of pushing 200 pounds into the air four times. Others are doing the same, and scrawled on the walls of the room are the records of similar efforts in the past.



BEAUTY and HEALTH Salon
Idaho's only complete Beauty Center, featuring:

EXERCISES
Sauna Baths and Massage for Men and Women

OPEN 8 A.M. - 10 P. M.

CALL 375-0858
for an appointment

PEPSI!

POURS IT ON!



Bottled by Nogel's Beverage Co.

COLLEGE IN & OUT

GIANT BURGER SPECIAL

Fries, Shake

\$1.00

Phone 344-5774
1215 Bellevue

Skaggs SPORTS CENTER

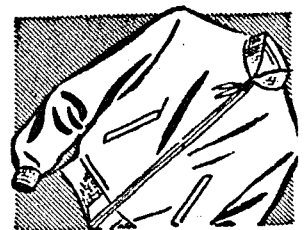
ski man's choice for after-ski

Henke
OF SWITZERLAND

SA - 50 4-BUCKLE	49.50
SD - 60 5-BUCKLE	59.50
SR - 70 5-BUCKLE	69.50
SC - 50 5-BUCKLE	75.00
SJ - 80 5-BUCKLE	79.50
SP - 85 5-BUCKLE	85.50

and
**a Happy,
Hart-y
Christmas
for all!**

Standard	104.50
Holiday	119.50
Camaro	134.50
Javalin	175.50



Franconia Parkas

MEN'S	30 ⁰⁰
LADIES'	28 ⁰⁰

Thermorama Parkas

MEN'S	30 ⁰⁰
LADIES'	30 ⁰⁰

ATTENTION, SKIERS!

Your Ski Passes are worth 50c off on a Large Pizza at

The Brass Lamp
PIZZA PARLOR

572 Vista

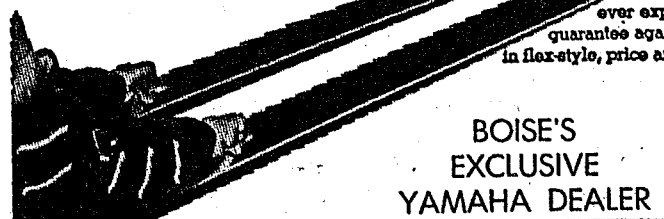
Phone 344-6541

Watch . . .
for our
opening
in

Caldwell



Lean on us



BOISE'S
EXCLUSIVE
YAMAHA DEALER

Standards	79.00
All-Around	99.00
Hi-Flex	139.00
Paramount	175.00

SKAGGS SPORTS

Downtown
8th & Idaho, Boise

BC Drops Hawks, Spartans in Opener

HART AND OTEY HIGH IN SCORING FOR NEW YEAR

By HOWARD WRIGHT
Roundup Sports Writer

Boise College, with the aid of Wendell Hart's and Bill Otey's hot scoring, completely devastated the Columbia Basin Hawks, 82-59, and the Spokane Community College Spartans, 84-54, in opening season contests.

Columbia Basin

Dec. 1, against Columbia Basin, the Broncos battled to a close 38-35 halftime score, with the Hawks on the short end.

Boise rallied with eleven tallies off Hawk miscues and errors, while the Pasco club countered with only one free throw during the rally. With the press, the Broncos were off to the races, dominating both the boards and the free throw percentages. Coach Murray Satterfield emptied his bench and with the effort by the starters, the Broncos coasted to an 82-59 opening cage decision for the season.

Boise put the starting five in double figures: Bill Otey 17, Ronnie Austin 15, Wendell Hart 13, and Keith Burke and Rodell Hill with 12 each.

The Hawks were led by Mort

Watson with 18 points and Jerry Arlington with 15, while Steve Panther added 11 markers.

On the boards, the Boise crew completely swept Columbia Basin in rebounds, 56-29. Otey led the Broncos with 16 retrieves while Austin, a freshman, grabbed 13, and freshman Joe Gillespie took seven in relief of Burke.

Columbia			Boise				
G	F	T	G	F	T		
Nell	3	3-6	9	Hart	5	3-3	13
Panther	4	3-3	11	Otey	5	1-2	17
Arling'tn	6	3-3	15	Burke	5	2-2	12
Ross	2	0-0	4	Austin	6	3-4	15
Watson	8	2-4	18	Hill	6	0-0	12
Rios	1	0-0	2	Gillespie	3	3-3	9
				Cox	1	0-0	2
				Hogue	0	2-0	2

Totals			Totals		
24	11-16	59	34	14-16	82
Columbia			35	24	59
Boise College			38	44	82

Total fouls: Columbia 13, Boise 15.
Fouled out: None
Officials: King and Tracy.

Spokane

Dec. 2, the Broncos won game No. 2, running over the Spokane Community College Spartans, 84-54, by controlling the rebounds and shooting a cool 48.1 percent from the floor.

Sophomore guard Wendy Hart pumped in 23 points to lead the Broncos' scoring. Hart hit a fantastic 12 of 15 shots from the floor and sank nine shots in a row at one point.

Bill Otey took down 16 rebounds, once again leading the Broncos in their 48-30 rebounding effort.

Spokane stayed with the Broncos for seven minutes and led 10-9

when Coach Satterfield slapped on the press, and, like the preceding game with Columbia Basin, the Broncos roared to 13 straight tallies and a 24-11 lead.

From that point on, the Spokane club was never in the contest. It was 45-25 in favor of BC at the half. Near the end of the first and second halves, Satterfield freely substituted over and around his starting combination.

For Boise, Otey added 16 points to Hart's effort, while Keith Burke and Rodell Hill each added 11.

Dave Chapman led the Spartan cause with 10 markers, and Greg Burham and Steve Davies had nine each.

Bucketing 8 of 11 attempts at the charity stripe, the Broncos remained hot from the Columbia Basin contest, tallying a two-game mark of 22 out of 27 at the foul line.

The Broncos took two days of practice and departed Wednesday for a three-day road trip, opening against North Idaho J. C. Thursday night and meeting the Idaho

Frosh in dual prelim contests to the University of Alaska-Idaho games, Friday and Saturday at Moscow.

Spokane			Boise				
G	F	T	G	F	T		
Brower	2	1-1	5	Hart	11	1-2	23
Burham	3	3-4	9	Otey	7	2-2	18
Chapman	5	0-1	10	Burke	4	3-3	11
Depew	3	1-1	7	Austin	2	1-2	5
Harris	3	0-0	6	Hill	5	1-1	11
Davies	3	3-4	9	Hogue	1	0-1	2
Huntley	1	0-0	2	Cox	3	0-0	6
Pitts	1	0-0	2	Gillespie	2	0-0	4
Soliday	2	0-0	4	Balrd	1	0-0	2
				Stoner	1	0-0	2
				Choules	1	0-0	3

Totals			Totals		
23.8	11.54		38	8-11	84
Spokane			25	29	54
Boise			45	39	84

Total fouls: Spokane 9, Boise 7.
Fouled out—None
Officials: Finkbeiner and Kerfoot.

Prospective Grads Pick Up Forms Now!

Application for graduation, both 4-year and 2-year are now available in the registrar's office. Seniors and sophomores planning to complete graduation requirements in December 1967, May 1968, or August 1968, must pick up applications, complete the form, and return it to the Registrar.

The graduation fee (\$10.30 for seniors and \$5.15 for sophomores) must be paid before the application will be processed by the Registrar. No student will be checked for graduation unless a completed form is filed with the Registrar.

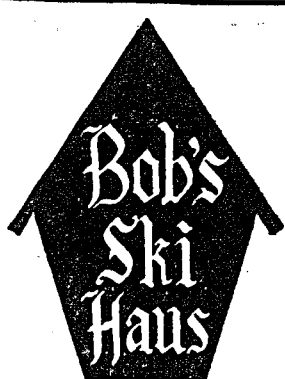
PE MAJORS MEET

All men and women physical education majors on campus met yesterday in the gym and discussed a PEM newsletter to be distributed throughout the state and the organization of a new club for both men and women. Conducting the meeting was Bart Chaffee, president of the Idaho Association of Physical Education and Recreation.

Ordinarily peace-loving, a wildcat once aroused can whip nearly any dog alive.

LOWEST OF PIGS?

This year's Pi Sig pledges include the following: Jim Abbott, Mountain Home; Rocky Carpenter, Boise; Dennis Crouch, Boise; Gary Davis, Boise; Greg Gleason, Boise; Steve Gregory, Meridian; Jeff Grimes, Boise; Jerry Hensley, Boise; Les Jenkins, Boise; Ron Mattix, Nampa; Alan Pudrbaugh, Boise; John Rost, Boise; John Stohler, Boise, and Jim Thompson, Boise.



All New Equipment Now In Stock!
Open Mon., Wed., Fri. 9-9; Tues., Thurs., Sat. 9-6

BOISE SKI SPECIALISTS
2445 Bogus Basin Rd.
344-1191

SAVE YOUR EYES!



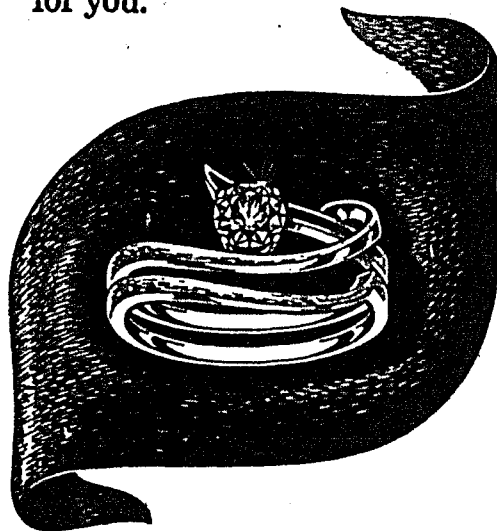
Proper light saves eyes, helps grades. See the "Better Light Better Sight" lamp at the College Book Store.

IDAHO POWER COMPANY

Our Claim To Fame

UNLIMITED SELECTION

If you haven't found your dream ring yet, we've got it, or can get it, or can make it for you.



JUST ANOTHER DREAM RING
\$250.00

OUR DIAMOND TRADITIONS

QUALITY INTEGRITY SELECTION STYLING VALUE

SPECIAL DISCOUNTS TO

BOISE COLLEGE STUDENTS WITH ACTIVITY CARD

Save at least 20% on your Diamond Purchase

Take up to 18 months to pay. Credit easily arranged.

Molenaar-Davis
JEWELERS

BOISE'S DIAMOND SPECIALISTS

109 N. 8th St

Ph. 343-6151

Open Fridays 'til 9 P. M.