

9-21-1967

Boise College Roundup, September 21

Students of Boise College

Although this file was scanned from the highest-quality microfilm held by Boise State University, it reveals the limitations of the source microfilm. It is possible to perform a text search of much of this material; however, there are sections where the source microfilm was too faint or unreadable to allow for text scanning. For assistance with this collection of student newspapers, please contact Special Collections and Archives at archives@boisestate.edu.

BOISE COLLEGE ROUNDUP

VOL. 5, NO. 4

THURSDAY, SEPT. 21, 1967

BOISE, IDAHO

AFRICAN OFFICIAL TO VISIT BOISE

Arriving in Boise the evening of Wednesday, Sept. 27 for a two and a half-day visit under the sponsorship of the U. S. Department of State will be Abou Doumbia, who holds the following positions with the government of Ivory Coast, Africa: Director of Insurances, Ministry of Economic and Financial Affairs, president of Societe de Gestion Financiers de l'Habitat, and secretary of the national Investment Fund.

His visit to Boise is sponsored by W. L. Gottenberg, vice president of Boise College, who has worked with this program since October, 1955.

"It is interesting," said Gottenberg, "that Boise is included in all these visits with other cities such as Washington, D. C., New Orleans, Los Angeles, San Francisco, Salt Lake City, Denver, Minneapolis, Chicago, New York and others of similar size."

Doumbia will be interviewed by the press, radio and television stations, and since he is interested in financial problems besides meeting with Governor Don Samuelson and Mayor Jay S. Amyx, he has appointments with James D. McClary of Morrison-Knudsen Co.; Ralph J. Comstock, president of the First Security Bank; John R. Blaine, Commissioner of Insurance for the State of Idaho, and Tom Frye, Idaho First National Bank.

Besides attending the meeting of the Rotary Club, he will also be a dinner guest in a private home.

Artists Win Honors At Western Fair

The Western Idaho State Fair and Traveling Art Shows give BC Art Department an opportunity to exhibit works.

In this year's Western Idaho State Fair, a Boise College student and several of the college's art instructors won recognition with their works.

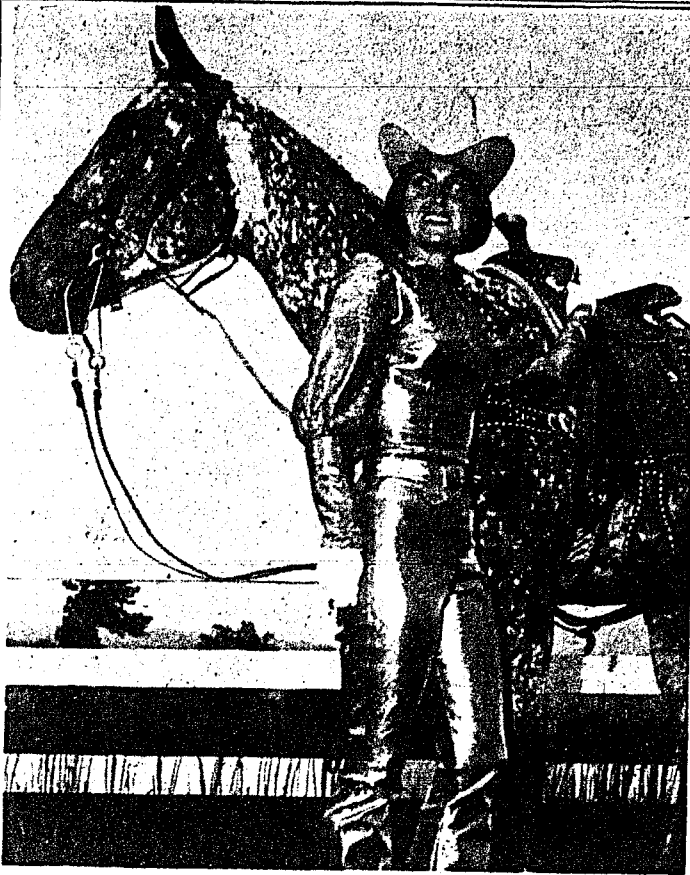
In the Amateur Division at the fair, Bill Koger, a sophomore art student, won second prize with a non-objective painting. Koger has studied art through junior high and high school, and plans to be a commercial artist.

In the professional division, Larry Cromwell won first prize with an experimental collage. Howard Huff received first place on a non-objective painting, and Charles Smith, new art instructor at Boise College, who formerly taught at Boise high school, won second prize in the painting division.

Another area where Boise College art faculty will be exhibiting is in the Traveling Art Exhibit, which is presently showing in Idaho. This collection of Idaho artists' works is sponsored by the State Arts and Humanities Commission and will include work done by Louis Peck, Howard Huff, Larry Chomwell, Jimmie Faulkner and Arnie Skov.

The purpose of the traveling show is to encourage an appreciation in Arts and Humanities and to give the different areas of Idaho an opportunity to exchange ideas.

Along with the state exhibit, five Idaho artists' works will be shown in a traveling show that will tour the southwestern states. These artists, who were chosen by the Arts and Humanities Commission, are Louis Peck and David Oravez, Boise College; Max Porter, College of Idaho; Fred Oehl, Idaho Falls; and Quinton Gregory, Boise. The show will be traveling for a year.



Yo Willhite Is Crowned 'Miss Rodeo Idaho, 1967'

By MIKE SCHINDELE
Roundup Feature Editor

For the second time in many years, a Boise College coed has returned from the Miss Rodeo Idaho competition victorious. Last year's winner, Rosemary Vassar, handed the title over to Yo Willhite on Sept. 9, thus making it two in a row for the BC rodeo enthusiasts. Miss Willhite earned her crown by competing with 15 other contestants in the competition held at Filer, Idaho this Sept. 6th-9th.

The contest itself consisted of three days of hectic judging in personality and horsemanship, with the final day devoted to the announcing and crowning of the winner and the runner-ups.

"The first thing I felt when I heard that I had won was relief. I was relieved that the contest was over and that I had been fortunate enough to win."

Representing the International Girls Rodeo Association at the contest, Yo received, besides the coveted title of Miss Rodeo Idaho, a \$450 trophy saddle, various items of clothing and several gift certificates. With the title comes the opportunity to participate in the Miss Rodeo America contest, which will be held in Las Vegas, Nev. on Nov. 16-19. The winner of that competition will receive several valuable prizes, plus the chance to appear at many of the nation's RCA-approved rodeos.

"I am really looking forward to the contest at Las Vegas, with one small setback involved. At the Miss Rodeo America competition I will not be able to ride by own horse, 'Fat Fanny,' but will be provided one by the contest officials," she said.

Miss Willhite, daughter of Mr. and Mrs. John W. Willhite, Boise, is a junior at BC, and is presently serving as secretary for the BC Rodeo Association. She is also an ex-drill team member. She is an elementary education major and holds the titles of District II High School Rodeo Queen, 1965; Idaho Girls Rodeo Queen, 1965; State High School Queen, 1965; Snake River Stampede Queen, 1967; Miss Magic Valley Horse Show, 1967, and last year was 2nd runnerup in the Miss Rodeo Idaho competition.

When asked what her plans for the future consisted of, she re-

plied: "The Miss Rodeo America competition will be my final queen contest. However, I'd still like to participate in 'barrel racing' at the various local rodeos."

FLU SHOTS AVAILABLE

Flu shots are now available to students, faculty and staff members at the Health Center. The shots will be given from 9 a.m. to 12 noon, Monday thru Friday, for 35 cents each.

Class Officers Elected; Yell Leaders Announced

The result of last week's class elections brought new and old faces alike into the realm of student rule.

Representing the new Freshman class are Larry Burden, president; Craig Hunt and Tom Moore, representatives. Sophomore class officers are Rich Justice, president, and representatives Linda Baril and Judy Cosby. For the second year, members of the Junior class have Steve Bratt for their president. Serving with Bratt are Scott Baker and Kathy Eason.

Boise College's second senior class is led by E. Howard Swafford, along with Mike Wardle and Bob Harkin.

Results of the Cheerleader elections held in the student senate meeting last week were for song leaders Penny Allen, Sue Stover, Pat Turner (last year's alternate now taking Linda Eyre's place) and Paula McGoldrich as alternate. Taking the title of Cheerleaders: Janet Barbour, Karen Carl Abrahamson, with Karen Butts and Fred Dillon as alternates.

Requirements made for each candidate included a 2.0 GPA and an appearance before the senate. The candidates were, for song leaders: Sue Stover, Penny Allen and Paula McGoldrich. For cheerleaders were Janet Barbour and Butts, Jimmy Byrne, Meri Lee Mitchell, Lynn Stadtman, Carl Abrahamson, Fred Dillon and Bruce Holt.

Before trying out, each candidate gave ideas as to the creation of more and better school spirit. They included: more publicity by using posters and banners, better communication by each student to others on campus, and projects by the clubs to create more student interest and activity towards ball games and other sports.

Each fall two cheerleaders and two songleaders are elected by the student senate. Then in the spring of the same year four cheerleaders, along with three songleaders and an alternate, are selected. This makes a continuous string of experienced cheerleaders to help those newly elected.

LOCAL OFFICIALS VIEW DEDICATION OF STUDENT UNION

President of Boise College Dr. John B. Barnes will make an official presentation of the new Student Union Building to the Associate Student Body officers and the students they represent Saturday at 8 p.m., in the President's Lounge.

The dedication ceremony will be witnessed by ASB officers, Mayor and Mrs. Jay Amyx, Charles Hummel, Sr., members of the Board of Trustees, members of the Administrative Council and Boise College Dean of Women and Dean of Men, Miss Helen Moore and Dr. J. A. McCauslin.

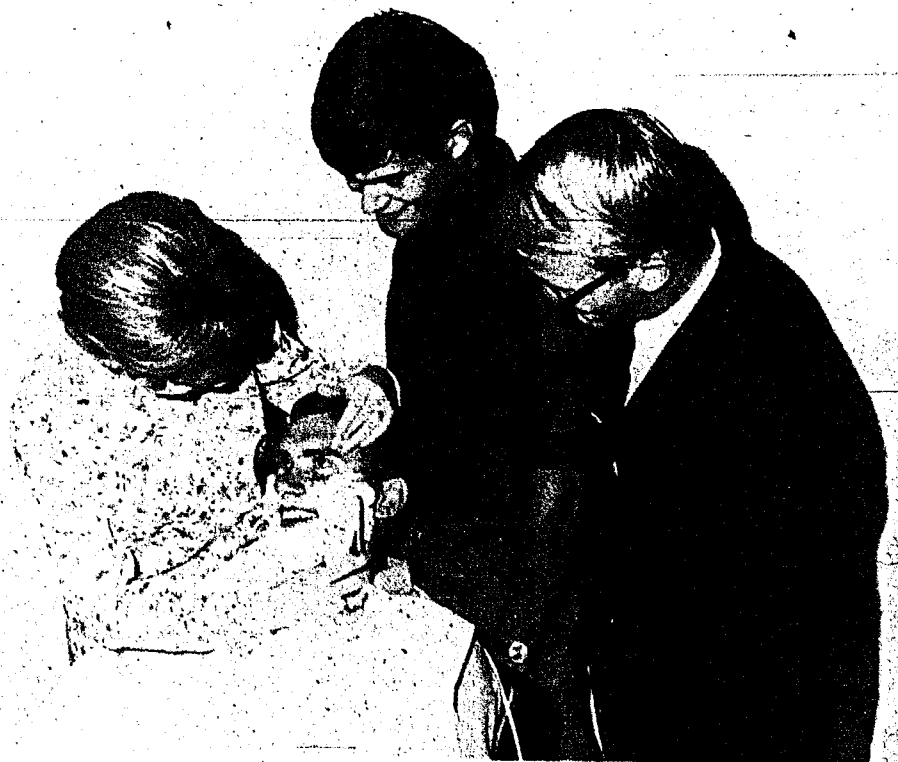
Following the dinner, guests, students and the public will dance to the music of Dick Turner's orchestra at the dedication semi-formal dance.

Students looking for lost articles should look in room 118 in the Administration Building.

A SPECIAL DEDICATION

The Roundup Staff members are pleased to present this special eight-page edition in honor of the new Boise College Student Union Building, which is to be officially recognized Saturday. The staff dedicates this issue to Phil Ranke, SUB director, and those employed in the building. The congratulatory supplement is a special project by Miss Kathy Amos, a member of the Roundup advertising staff.

A CLOSE SHAVE FOR KING BEARD CONTESTANTS



SMILING half-way cautiously, Jeff Inglis sits in the barber's chair as Janice Welsh gives him a close shave as a requirement to enter the annual King Beard contest, sponsored by the Valkyries. Janice, who is chairman of the contest, used an old fashioned straight razor as spectators (standing center) Rocky Carpenter and Lloyd McGrath, watched the proceedings. The shave was held last week in the SUB and will give the men until Oct. 28 and Homecoming to grow the best beard on the Boise College campus.

Boise College Roundup

"The Voice of the Campus"

EDITOR JANICE WILLIAMS
 ASSOCIATE EDITOR RUTH RUSSEL
 NEWS BUREAU SPORTS EDITOR MIKE BOWEN
 SPORTS EDITOR ART GALUS
 ADVERTISING MANAGER BOB FONTAINE
 ADVERTISING STAFF KATHY AMOS, BRUCE JOSEPH
 FEATURE EDITOR MIKE SCHINDELE
 POLITICAL EDITOR RON OLIVER
 NEWS EDITOR PAMELA LYDA
 CLUB EDITOR KATHY FITZPATRICK
 EDITORIAL STAFF:

Howard Wright, Gretchen Gordon, Mike Stevens, Randy McCowan, Jeff Hartshorne.

FACULTY ADVISOR JOHN MacMILLAN
 STAFF PHOTOGRAPHER FRANKLIN CARR

Published weekly, except during holidays, as a project of interested Boise College students.

MOUNTAIN STATES PRESS, INC., BOISE

SUB A LA SPECIAL

IT'S A GROOVE!

By GRETCHEN GORDON
 Roundup Staff Writer

Have you taken advantage of all the new features and services in the new Student Union building? It's the "grooviest" place on campus. The new Student Center has two modern and spacious lounges on both first and second floor. The comfortable chairs in them are the best place to relax after a day of classes.

In the first floor lounge, Boise College has its huge trophy case. As the year goes along, it will be filling up with glimmering trophies and awards won by outstanding Boise College students.

The second floor lounge has a unique panoramic view of the campus and the Bogus Basin mountains. A huge multi-purpose ballroom and dining hall for the students who live on campus is also located on second floor.

If you haven't attended one of the SUB dances yet, you'll be able to soon as they are scheduled regularly for the coming year. Besides the main dining room, there are several small dining rooms which will be used for club dinners and special occasions. A final room on the second floor is President Barnes' conference room, where many issues concerning the college will be discussed.

The best place to have fun and get away from the books is the SUB bowling alley. The new game room features six bowling lanes and five pool tables. Keht Kehler is the new bowling instructor and he will be teaching 17 classes a week from 7:45-3:00. Open bowling will be from 3:00-5:00 p.m. and from 7:00-10:00 p.m. Monday through Thursday; Friday from 3:00-5:00 p.m., and from 7:00-12 p.m. Saturday's schedule will be from 9:30 a.m.-5:00 p.m., and from 7:00-12 p.m. Sunday the lanes will run from 3:00-10:00 p.m.

If you haven't already discov-

ered it, the Boise College Bookstore has everything from the coolest jazz recordings to the latest paperback. You can also get your Boise College sweatshirts, stationery and other souvenirs. To keep up on the latest "happenings" on campus, check the SUB bulletin board, where weekly news and club information will be posted. If you need to talk with an ASB officer, you can find their offices on first floor across from the bookstore.

The Student Union building is for your use, so take advantage of all it has to offer!

The Score Is . . .

By RON OLIVER

I overheard this conversation in Botany last week. We had been diligently peering into our microscopes at segments of a living specimen, when our attentive thoughts were shattered by Bill's sudden outburst of indignation and disgust.

"Professor, there are 1,371 cells in this section and five of them have formed a group of their own, disrupting the entire group. I think they're some sort of cancer."

"Cancer? What makes you say that?"

"Well, look, the other cells are working in perfect harmony. By working together they can accomplish their given task with ease; if one gets out of line, he imme-

CIRCLE K MEMBERS, from left, Charlie Rountree and Gary Felt, president, presented 16 bookshelves to Dr. J. A. McCauslin, dean of students, last week as a service club project. The men are shown distributing the shelves to the various buildings for the convenience of the Boise College students.

diately receives the correct medicine or is destroyed. But these five are rejecting the entire system, doing nothing to help it (and thereby hindering it, I think), and they have the audacity to presume that not only do they not need the system, but that they are in the right."

"Now hold on. How do you figure all this?"

"Simple. By working together, a greater efficiency is achieved, one that enables each to specialize, knowing that other cells will furnish all its other needs. But these five have been rejecting osmosis or any of the diffusion from without their group — or even, quite often, from themselves. I believe they're regressive, subversive, and completely carterian."

"Really, now, you can't say that without investigating the entire system, particularly in the light of evolution. Who's to say that the carteria is not more efficient, since it is capable of adequately satisfying its needs. Perhaps the five are only revolting against some evil you have not yet observed. Evolution may prove them right."

"But, Professor, how could such a well ordered group be wrong?"

ESQUIRES RECEIVE FLAG

The Esquires service club was presented with two flags at their last meeting for flag-raising ceremonies, preceding each home football game. Senator Frank Church presented the members with a United States flag, which was flown over the State Capitol. They also received a state flag from Gov. Don Samuelson, presented in his behalf by Lou Babb, Adjutant of The American Legion Department of Idaho.

AWS SCHEDULES FRESHMEN TEA

Fashions by the Rag Bag will be featured at the annual Associated Women Students freshmen tea to be held this evening at 7:30 in the Student Union Ballroom. Miss Kathy Eason will serve as mistress of ceremonies and will be assisted by AWS President Susie Johnson.

Dean of Women Miss Helen Moore will be guest speaker for the event and Miss Judy Cosby will sing, accompanied by Cathy Weintz on the piano.

Modeling at the tea will be the Misses Chris Spencer, Gerry Furguson, Lois Carter, Becky Hollenberg and Robble Jausaro. They will be escorted by the freshman

PRESIDENT'S DAUGHTER PUBLISHES GLOSSARY OF CAMPUS SLANG

By LYNDA BIRD JOHNSON

When you're in a flap from tubing a test in your bear, it is better to flake out, to bag z's or to seek the great white biscuit? As it turns out, it doesn't really matter (see definitions below), but you'll quickly be labeled a hopeless goose if you're so much behind the times that you don't know what the terms mean. For they are all current examples of college slang, and even the most callow of freshmen can tell you that no form of human communication becomes obsolete faster. (How many people today know, or even care, that the phrase "twenty-three skidoo" was once a sure way to get a laugh?)

To help bridge the ivy gap between generations, we recently made an informal survey of contemporary college jargon. Not all the words and phrases below are exclusively collegiate, any more than all of them are in use on any single campus. But together they should serve the outsider as a handy guide to campus English.

Just one word of warning: Use the terms with caution, since it's a certainty that the nation's college students are already hard at work replacing them with new ones. After all, you wouldn't want to be thought of as a dorf, would you?

ACE A COURSE. Earn an A.

ALL-TIME. The greatest (used chiefly on West Coast.)

ANIMAL. An athlete or someone who looks muscle-bound.

BAG Z's (v). Go to sleep.

BAND-AIDS. A course in first aid.

BEAR (n). A tough course.

BIRD-DOG (v). Date fraternity brothers of your best beau.

BLOW AN EXAM. Fail or do poorly.

BLOW YOUR COOL. Get flustered (usually used in a sentence like "Don't blow your cool").

BOONIES (or, more formally, BOONDOCKS). Secluded areas where coeducational activities such as woodsies (see below), take place.

BUG OUT. Disappear.

BURNED. Hurt emotionally.

BURNT OUT. Having lost interest.

CATCH SOME RAYS. Sunbathe.

CLOSET CASE. A friend, often one of the opposite sex, whom you don't want someone else to meet.

COME GRUBBY. Wear your old clothes.

COOL. In vogue or much admired.

COOL IT. Calm down, relax.

COPS & ROBBERS. A course in criminology.

CRIB (n). Easy course.

DOOR-DODGER. A coed skilled at getting a door between herself and her date's advances.

class president and representatives.

AWS is made up of Boise College women students and projects for 1967-68 include maintenance of the Christ Chapel on campus, selling concessions at the football and basketball games and working at student elections.

DOOR HUGGER. A coed who sits close to the right-hand door of a car, in order to avoid proximity to her date.

DORF (n). A clod or nerd; an inept, unpleasant person.

FLAG A COURSE. Get a grade of F.

FLAK. Talk that irritates or confuses the listener.

FLAKE OUT. Go to sleep.

FLAMED OUT. Completely washed out.

FLAP (n). Big commotion.

FLAP (v). Get in a dither.

FLIP A U-EY. Make a U-turn.

GOOSE. A socially unacceptable or objectionable person a bit obsolete).

GROSS. Nasty or naughty.

GUT COURSE. An easy course, such as flower arranging or basket weaving.

HANG A RIGHT. Make a right turn.

HOOK (n). A grade of C.

HUNG UP. Stymied.

LIVES IN A TREE. Not aware of what is going on; out to lunch.

LOSER. A person who is unacceptable, not up to expectations.

MICKEY MOUSE. An unimportant thing made to seem important (a.g., all administrative actions.)

MISSING LINK. Clod.

MOVER. An aggressive person.

PUNT (v). Give up.

PUT ON (v). To kid (as in "Don't put me on").

SEEK THE GREAT WHITE BISCUIT. Crawl between sheets; go to sleep.

SHOT DOWN. What happens when everything is going well and suddenly the bottom drops out.

SMASH (v). Do well in a course.

STAY LOOSE. Relax and take life as it comes.

STRAIGHT SKINNY. The unadulterated truth.

TRASHMOUTH. Person who uses vulgar language.

TURN YOUR E. B. UP TO MOTHER. Turn your electric blanket up to the highest temperature; hence, return to the womb and security (chiefly West Coast).

UGLY STICK. Imaginary object supposedly used on a person who is socially unacceptable (example: "Somebody must have whopped her with an ugly stick").

WOODSIES. Affectionate coeducational activities commonly held in remote wooded areas.

ZOO. The place where animals (see above) are kept and let out only for athletic events.

LITTLE MAN ON CAMPUS



"I HOPE I DON'T LOOK 'MUSSED'—OUR HOUSE MOTHER MAKES US PASS A PRETTY TOUGH INSPECTION WHEN WE COME IN."

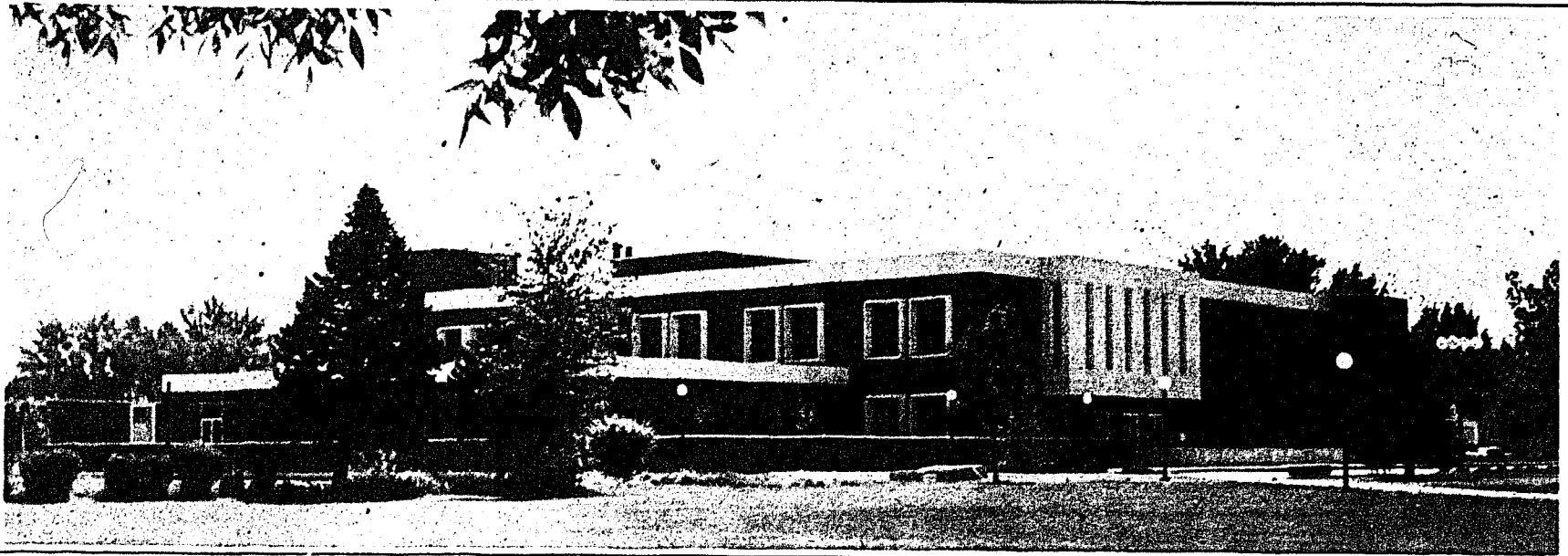
We Salute You . . .

Boise College Student Union

STUDENT UNION SECTION

BOISE COLLEGE ROUNDUP

THURSDAY, SEPT. 21, 1967



Pride of Boise College Constructed

Saturday, Sept. 23, 1967, the Boise College Student Union will be formally dedicated. This pride of BC was constructed by the R. W. Luekenga Construction Company, Inc., of Nampa, with Hummel, Hummel, Jones & Schawver architects designing the building.

Ross Luekenga, president of Luekenga Construction Co., expressed delight in serving Idaho and Boise College by constructing the new SUB at the college. He said, "We were glad to help Boise College grow with progressive Idaho." J. J. Koudelka, vice president of the construction firm, thought the new student union to be a symbol of the college's growth and hopes of the future.

Under the command of Art Carlson, construction foreman, the new student union grew to the luxurious building now humming with students' voices and college activities.

Floor plans of the SUB include half again as large as that of the library. The SUB is two stories tall and air conditioned. The building itself is located on the southeast corner of the campus where College Blvd. intersects Lincoln.

The on-campus bowling alley has six lanes, enough for the bowling classes and regular student usage. There is also a game room with ping pong, billiards, etc.

The biggest room in the SUB is the ballroom. Its ceiling is spanned by 75-foot precast concrete beams. The room can be divided into three smaller rooms, the east one-third of which is used as a dining area for students. In the center of the ballroom on one side is a stage set up for live music or speakers. As many as 1,200 people can be seated at a banquet in the entire ballroom.

As one enters the building on the west side, stairs or an elevator can be used to get to the second floor. Hanging in the stairwell will be two chandeliers which blend with the furniture and carpeting to produce an elegant effect.

Much of the decorating is done in wood paneling especially in the snack room where the 12-foot ceiling is brought down over the wall booths, and the tables and chairs are of complimentary colors and walnut.

To keep the students academically in step, the BC Bookstore supplies everything from textbooks and note pads to cosmetics and BC sweat shirts.

For those who find stairs exhausting and elevators stomach disturbing, beautiful lounges are located near the stairs on both floors. Also, both floors have conveniently placed rest rooms.

This spectacular building of Boise College was constructed by the following sub-contractors, who worked in conjunction with the R. W. Luekenga Construction Co., Inc.: W. P. Fuller Paint Co. of Boise; Superior Floor Covering, Salt Lake City, Utah; Johnson Electric, Nampa; Union Plumbing and Heating, Boise; Honeywell, Inc., Boise; Ready-to-Pour Concrete Co., Inc., Boise; Ferdinand Sheet Metal, Nampa; Associated Systems, Boise; Dale and Omanon, Idaho Falls; AMF, Westbury, New York; Circo Painting, Poca-

tello; Dover Elevators, Salt Lake City, Utah; Wood Products, Inc., Boise; Allen Steel Supply Co., Boise; Western Steel Manufacturing Co., Boise; and A. J. Gaige & Associates, Boise.

Also contributing to the list of sub-contractors are Global Steel Products, Santa Barbara, Calif.; Architectural Products Division of Boise; Architectural Specialties, Salt Lake City, Utah; Hobson-Foster Corp., Boise; Idaho Acoustical Boise; Davis Supply Co., Inc., Boise; American Lockers, Portland, Ore.; Cecil Cherry Construction, Meridian; Boise Paving and Asphalt Co., Boise; Coin Locks Jamestown, N. Y.; Ray Ewing Plastering Co., Meridian; Wasco Manufacturing Co., Boise and Salt Lake Terrazzo, Salt Lake City, Utah.



We, at R. W. Luekenga Construction Co., Inc. were pleased to have aided the growth of Boise College, the college that is growing *with* and *for* Idaho.

R. W. Luekenga Construction Co., Inc.

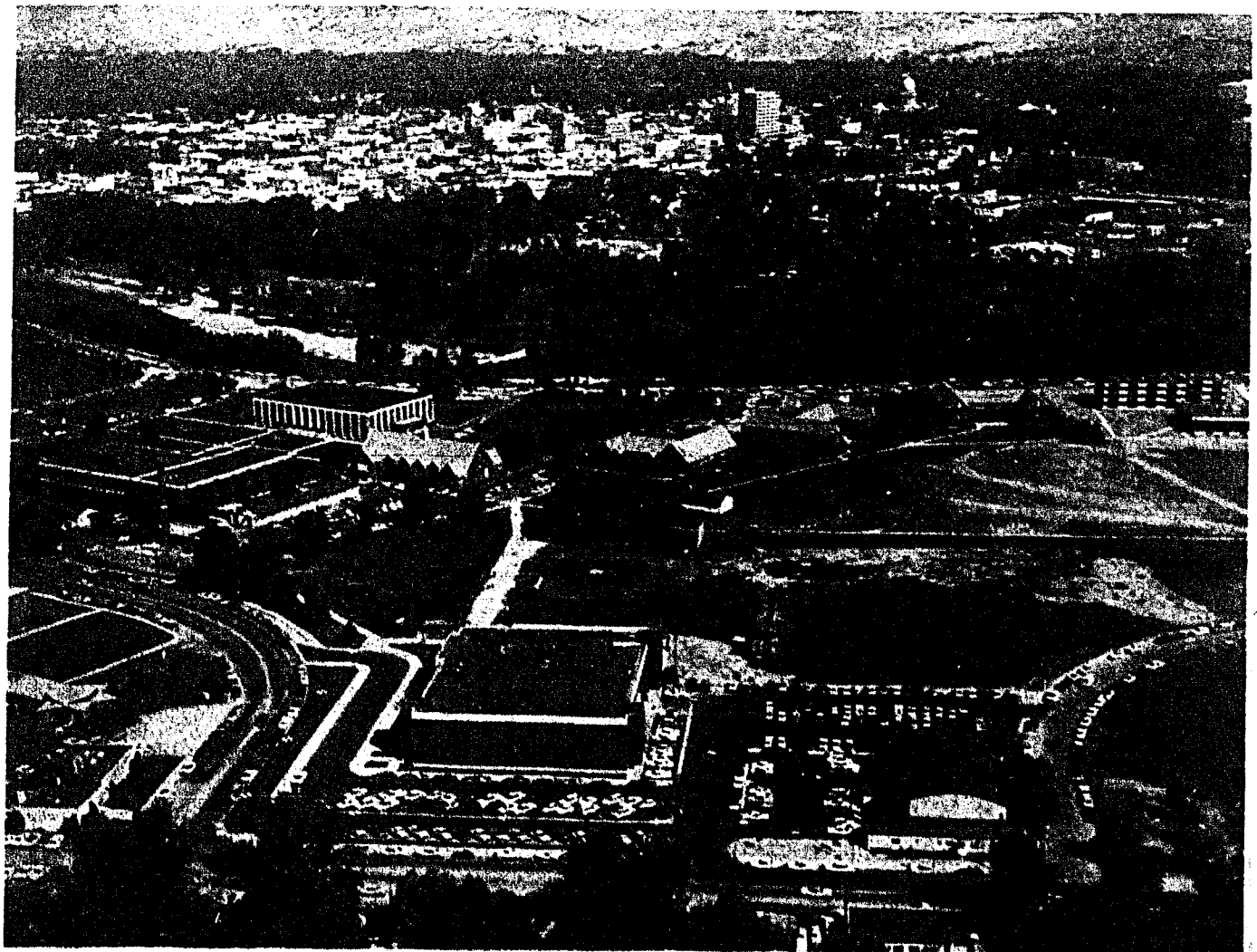
BUILDERS AND CONTRACTORS

EXPERT CABINET WORK AND FINISHING

Box 45, Nampa, Idaho

Phones 466-3503; 466-3504

R. W. LUEKENG, 120 Yale — J. J. KOUDEKA, JR., 1503 7th St. No.



SITUATED on the corner of College Blvd. and Lincoln, the new Boise College Student Union stands out among the city's biggest and finest buildings. The SUB is a two-story construction, sur-

rounded on three sides by a spacious paved parking lot. Continuing the circular pattern of the lot is an elevated terrace located just outside the snack bar for convenient access.

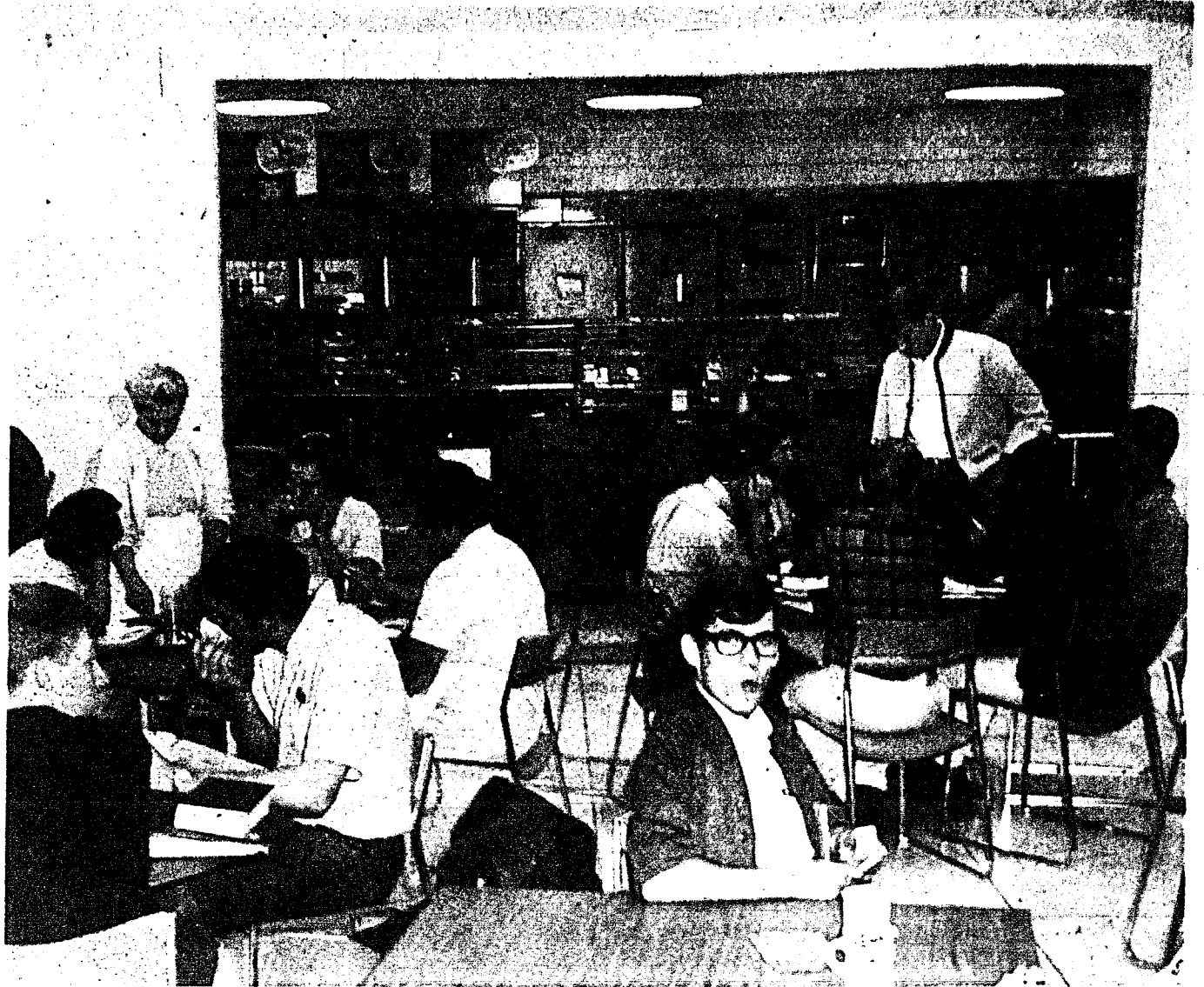
PROGRESS
THROUGH
EDUCATION!

ALLEN
STEEL
SUPPLY
CO.

2902 Fletcher
BOISE, IDAHO

Phone 344-3311

LOCATED on the north side of the first floor is a large snack bar with enough room to seat 514 students. Food will be obtained through the "scramble" system which is now in use by many universities and colleges. The food is arranged around a large counter so that no one needs to stand in line waiting for snacks.



WASCO MANUFACTURING CORPORATION WAS PLEASED TO HAVE PROVIDED THE CAFETERIA AND RESTAURANT INSTALLATIONS IN THE NEW STUDENT UNION

Wasco Manufacturing Corporation

MANUFACTURERS OF STAINLESS STEEL RESTAURANT, BAR, AND INSTITUTIONAL EQUIPMENT

GENERAL SHEET METAL — HEATING — AIR CONDITIONING

212 North
16th Street

E. P. WASSLER MFG. CORP.
"WASCO"
PRODUCTS

Phone
342-5654

SALES OF RESTAURANT AND INSTITUTIONAL EQUIPMENT AND SUPPLIES

BOISE, IDAHO

STUDENT UNION
FEATURES BOISE'S
LARGEST BEAMS

The largest pre-stressed concrete beams yet placed on a Boise building span 75 feet 8 inches across the ballroom of the Boise College Student Union. The beams, 9 feet 4 inches wide and 46,100 pounds in weight, were manufactured by Ready-to-Pour Concrete Company of Boise.

The technique of pre-stressing concrete beams is relatively new and was first used in Idaho in 1957. The concrete of such a beam is pre-compressed before the beam is put into use by means of steel cables. As loads are applied, those areas of the beam which would normally go into tension merely hold some of their pre-compression.

Pre-stressing (pre-compressing) a concrete beam actually makes the beam flexible.

Concrete having a compressive strength of 5,000 pounds per square inch, approximately twice the strength of normal concrete, is used in the manufacture of pre-stressed concrete. The steel cables in the beams have a tensile strength of 250,000 pounds per square inch or about 5.5 times the strength of normal steel.

Pre-stressed concrete has gained rapid popularity among architects and engineers because of several qualities. Its long span capability eliminates the need for the multitude of columns found in many older buildings. Since pre-stressed concrete won't burn and has excellent structural resistance to intense fire, lower fire insurance rates are normally charged when the architect chooses to design with a pre-stressed concrete structural system.

One interesting aspect of the Student Union Building is the rapidity with which it was constructed. This was due in part to the fact that the pre-stressed concrete floor and roof members were being manufactured while the foundations, walls, and columns were being constructed on the job site. At the proper time the beams were hoisted from the plant and hoisted into place by the means of a crane.

FROM THE GROUND UP, construction work started on the new BC Student Union last spring. Working throughout the summer, the SEU was clothed in concrete and paint to be finished for fall classes. Already the students have dubbed the new SEU as home base for fun, food and get togethers.

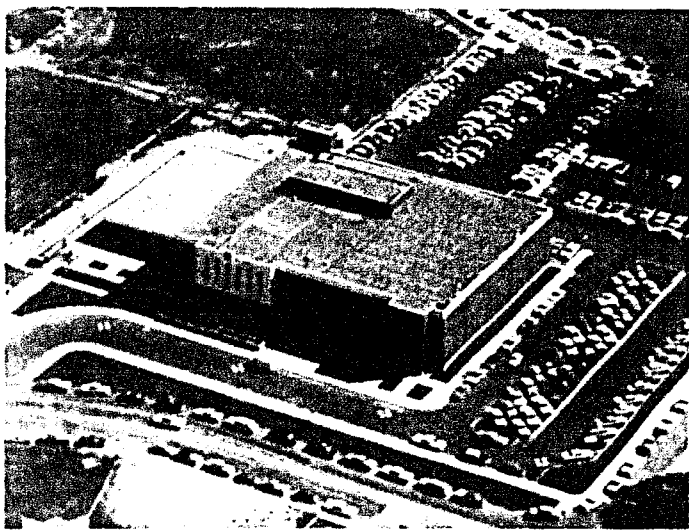


WOOD PRODUCTS INC.

was proud to have furnished
mill work for the new Boise
College Student Union

5420 Morris Hill Rd., Boise, Idaho

NOT ONLY does the SUB Bookstore provide the needed textbooks and materials for class work, but it also supplies students with cosmetics, Boise College sweat shirts, waste baskets, etc. Good place to browse!



EVERYONE can find a parking place at the new Student Union.

Enjoy your new
S. U. B.
Boise College
Honeywell, Inc.
1365 No. Orchard

CONGRATULATIONS

- to -

BOISE COLLEGE

on the new Student Union



ELECTRICAL INSTALLATIONS

completed by

JOHNSON ELECTRIC

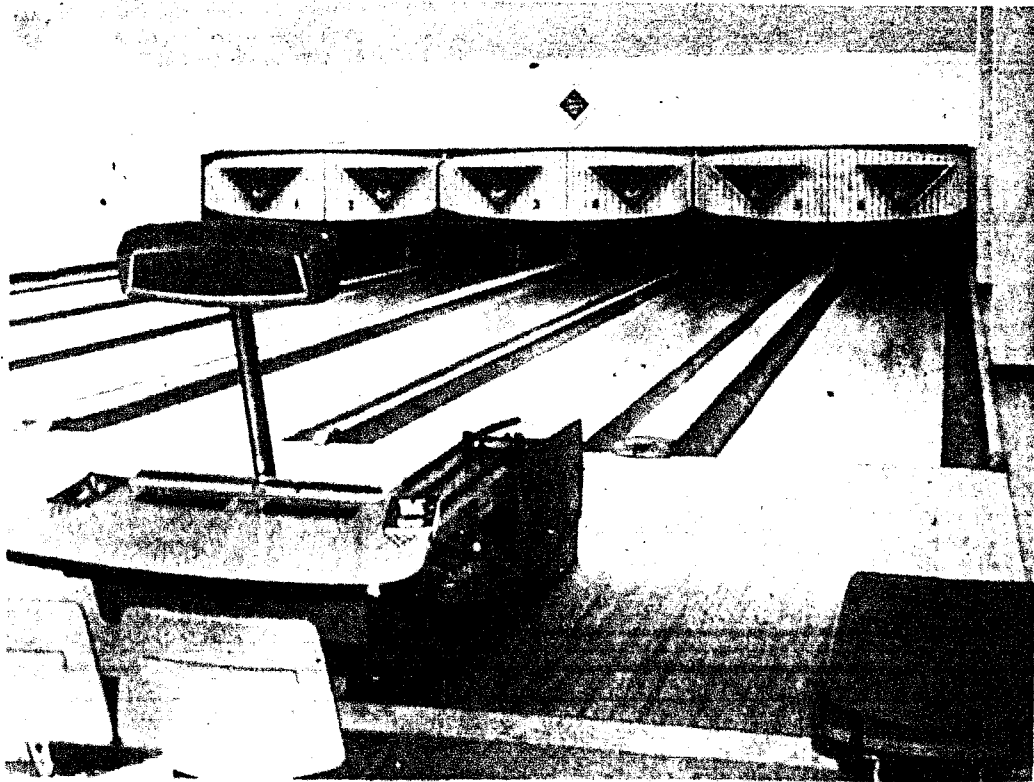
Nampa

ELECTRICAL CONTRACTORS

HOTPOINT BUILDER AND
DISTRIBUTOR

228 Nampa-Caldwell Blvd.

Phone 466-2468



MODERN AMF BOWLING equipment is featured in the SUB recreation center. On these lanes, students are bowling for fun or for PE class credits. Also found in the room are pool tables.

UNION PLUMBING and HEATING

1743 Broadway Ave.
BOISE
Phone 342-0591

FERDINAND METAL

HEATING
COOLING
ROOFING

2206 Industrial Road
Nampa, Idaho

CONGRATULATIONS
BOISE COLLEGE

ACOUSTICAL CEILINGS CHALK & TACK BOARDS
MOVABLE PARTITIONS STRUCTURAL ROOF DECKS MACOMBER STEEL
GYPSUM ROOF DECKS

★ ★ ★

ASSOCIATED SYSTEMS, Inc.

Phone 343-1860
343-1869

513 SOUTH EIGHTH
BOISE, IDAHO 83706



CONGRATULATIONS

WESTERN STEEL Manufacturing Co.

2601 Main Street, Boise, Idaho

Phone: 344-5548

WONDERS were performed this summer as the new Boise College SUB edged its way from a mere skeleton to the huge building as it stands today. Pouring the concrete foundation for the vast structure, as pictured here, is Ready-to-Pour Concrete Co., Inc., of Boise. After the walls were erected, the huge pre-cast beams were hauled and craned into place to put the crowning touch to the two-story structure.

Congratulations,
Boise College!

Architectural
Products
Division

704 So. Orchard Ave.
BOISE
Phone 343-7696

Ray W. Ewing Plastering Co.

LATH • PLASTER • STUCCO

Phone 888-2165

502 East State
MERIDIAN, IDAHO 83642

Legs Come Out of Hiding

By KATHY AMOS
Roundup Feature Writer

Are you pop-eyed at the minis on campus? Many debating opinions have been issued to the Roundup roving reporter on this very matter.

The majority of the BC male students thoroughly enjoy the entire affair. They do, however, prefer to see the minis on "nicely shaped legs." Many of the girls agree but continue saying "what else can you buy now-a-days?"

To one pretty coed, Susan Thompson, it's not finding a mini but buying them all. "I'd wear them if I had the money to re-do my entire wardrobe. It looks odd to wear minis and the old conventional length, too."

Dr. David Torbet, psychology department head, expressed delight about the minis on campus, however, he said, "I'm too occupied, too tired and too old to really matter."

Apparently, Skip Adams and Bruce Holt are not in Dr. Torbet's predicament. They both say that minis should be SHORTER! M-m-m. What about that, girls?

Marjett Schille, BC coed, just recently visited England and she has happily turned to minis as "that's all they wear over there." And that's what she wears over here now.

Freshman Tom Moore, cheered, "Mini skirts look good on the right girl and on the wrong." Confusing? Well, he can't accept the idea of his girl friend wearing one this year in Portland, but enjoys the minis on the home front.

"Minis belong on slim girls and preferable on 13 to 15-year-olds," remarked Lynn Craig, BC freshman. Mrs. Hazel Hunt, BC office secretary, prefers minis on the slim, trim girl. But she did wonder at the hall traffic as it comes to a gogling stop, when a mini is drinking at the fountain across the hall from her office.

When PE Instructor Mrs. Jean Broyles was asked her thoughts about minis, she replied: "I'm used to that sort of thing." At that moment Mrs. Broyles was clad in a mini-type tennis outfit.

Not everyone agreed on minis on campus or at any time. Leo Knowlton, Mid-management department, thought that mini conformity should remain in junior and high school and not in college, where he believes individuality to be the key. "The one problem," he commented, "is that too many girls lack the figure for a mini skirt."

Students Joyce Aye, Margarette Murray and Marcia Cheponis all feel that minis should be worn by girls with good figures. Also, they agreed that a mini is a difficult thing to sit in, not only for the girls but for the surrounding boys.

In conformation to minis on campus or anywhere or anytime are Don Martin and Stan Stringfellow. Stan summed it all up in three easy words, "Viva la difference!"

But is the mini wearing a good sign of femininity? Or is it a moral defect? Ray Schwartz, English professor, believed morality to be dictated by the "decency foundation of society." He replied to minis by saying, "Pop-eyed at the prospect."

The mind is a wonderful thing. It starts working the minute you are born and never stops until you stand up to speak in public.



STRIKING OUT for her next class is "Miss BC Coed", who seems to be covering more distance with the aid of her "mini" culottes, which allow for some lo-o-ng steps. The culotte dress can be found in almost every classroom in every color and pattern imaginable.

Miss Modern Mini



LOADED DOWN with books and art supplies, BC coed Joyce Green strolls toward the SUB for a quick color before her next class. This mini should be seen in color—it could stop a truck.

Up With Minis!



GRACEFULLY taking the Student Union stairs to the second floor lounge is another Boise College female, who seems to have mastered the problem of getting up steps in a mini. Many a mini-skirted coed has shunned the SUB staircase because of this situation. Hey, girls, maybe she gives lessons!

AT RIGHT: Wearing a mini and a smile is Judi Richard who is a Boise College Yell Leader for this year. Judi was caught by the camera, "mini-ing" in the Student Union during the morning break. The mini skirt, popular on most college and university campuses, is defined as a skirt which is four to seven inches above the knee.

Hey, What's Going



SURPRISED at all the attention her mini was getting is Paula Roberts who just couldn't walk in front of the Student Union in a mini without being whistled at or at least, given a few "woos" and "Heys." A junior at Boise College, Paula wears minis for comfort, fashion and for just plain fun.



BC RODEO CLUB PLANS ACTIVITIES

The Boise College Rodeo Association is using the month of September to prepare members of their rodeo team for special competition in the Ricks College Rodeo to be held Oct. 6 and 7 in Rexburg.

The officers have invited all students interested in horses, riding and especially rodeo to attend the club's weekly meetings held at noon on Mondays in the President's Ballroom in the SUB.

A FREE LUBE JOB
with any full service

BOB'S BROADWAY SHELL
Your College Station
1005 Broadway 344-9901

WANTED

By Record Club of America
Representative to earn over
\$100 in short time.

Write:
Mr. Ed Benovy
College Bureau Manager
Record Club of America
Club Headquarters
York, Penn. 17041

SMOKES ON THE MENU?

Boise College men with a 2.3 GPA or better and who are interested in service work are invited to attend the Circle K Smoker to be held Friday at 6 p.m. in the President's Lounge of the Student Union, according to Steve Bratt, membership chairman. All club officers will be on hand to answer any questions about the club and what requirements are necessary to join, Bratt said.

Patronize Our Advertisers

FOR THE STUDENT The Classic 12 A Total Professional Portable—by SMITH-CORONA



KING-SIZE CARRIAGE ON A PORTABLE

NEW!

THE CLASSIC 12 gives you all the deluxe, professional features — in a portable size — at a portable price.

FULL GUARANTEE EASY TERMS

FINCH'S
211 N. 10TH PH. 342-9345

COLLEGE IN-OUT

Famous for our
BRONCO BUSTER
Shakes, Sundaes
STILL
25c

Special Discounts and Credit Arrangements

given college students upon presentation of student ID card

Whether you need a token gift or something big — you can be sure of getting the finest at the most reasonable prices at



1207 Broadway Avenue — Broadway Plaza Shopping Center
3 Blocks from Bronco Stadium

Broncos Pluck Hawks 25-12



TOPPING a sixty-eight yard drive, Ben Shafer (24), Boise College left halfback, rams through the Pasco defense for the final score.

Coach Smith's Aggregation Scores Initial Win In Opening Football Tilt

By ART GALUS
Roundup Sports Editor

Boise College tromped Columbia Basin 25-12 in the season-opener Sept. 16 to finally even the record that has stood between the two schools for the past five years. The Pasco Hawks and BC Broncos traded blow for blow in the first half, but after the brief moment at half time Coach Smith had with his chargers, it was evident that CBC had not seen anything yet.

The referee's coin landed Bronco side up, beginning a 71-yard march in ten plays that saw Terry Squibb go over for the six. Tim Powers attempted repeatedly to make necessary PAT's during the game, and only with the final touchdown did his toe find the perfect contact point.

With the change from defense to offense, the Pasco tribe took three minutes to post two counters with both conversions failing. Following the Bronco touchdown, CBC traveled 80 yards on the ground, plus five through the air. Then capitalizing on a BC fumble the Hawks tore over the remaining 40 yards to make it 12-6.

A short Hawk punt left Boise on the Pasco 38, allowing Pat Williams to rush 19 yards and later bull into the TD zone from the one. With the following BC kick-off, CBC again was forced to punt, and Hal Zimmerman, on a second pass attempt, found Puddin Grayson watching the game from the end zone, and the Broncos went ahead by six, 18-12.

The second half was dominated

LETTERMEN TO MEET

There will be a meeting of all Boise College lettermen in the gymnasium Monday, Sept. 25. Committees for float decoration and social events will be selected and plans for the year initiated. All freshman football players have also been asked to attend.

Kuna's cross country team for the last two years.

Dr. Cooper still urges all boys who are interested to sign up as soon as possible and help start Boise College's newest sport on the right foot.

by the Bronco defense which kept CBC limited to 39 yards passing and 38 yards rushing. Ben Shafer plunged through 29 yards of Pasco defense late in the fourth quarter to complete a 68-yard drive in six plays.

Pat Williams, leading BC land grabber, averaged seven yards per carry for a total of 56 yards. Ben Shafer and Pat Keel picked up 39 and 35 yards, respectively. Big John Kameenui and Steve Svitak

both battled supremely on the defensive unit with tremendous pursuit and tackling.

Squibb and Zimmerman piloted the Bronco squad equally well with Terry doing well on the ground and Hal having the best luck with the passing game.

	CBC	BC
First downs	14	19
Yards rushing	189	243
Passes	9-17	4-12
Yards passing	45	94
Passes intercepted	1	0
Fumbles lost	0	2
Yards returned	101	109
Punts	7-35.1	4-31.5
Penalties	7-68	5-39

First Road Game Sees BC vs. Everett

By HOWARD WRIGHT
Roundup Sports Writer

Next Saturday, the Broncos play Everett Junior College in the Everett Shrine Bowl on the first road game of the season.

The Trojans, under the leadership of Coach Marv Cross, will try to seek revenge for their 14-0 blanking of last year. This is Everett's final chance before Boise College attains four-year status to improve their 11-2-1 record over the years. The Broncos are going into the game intending to make five wins in a row before leaving the ICAC, according to Coach Lyle Smith.

Coach Smith anticipates a strong Everett effort. "We haven't received many reports on Everett as yet, but we have learned that they had a successful recruiting program and that they have a good number of returning lettermen. Returning are last year's fullback and halfback."

Also traveling to Everett will be the band and the high-stepping Broncoettes for the halftime performance. Students wishing to get in on the action may tune in KIDO radio (630 on your dial) at 8 p.m., and listen to the play-by-play coverage of the game.

LET'S GO! FIVE IN A ROW! BRONCOS!

YD's MAKE PLANS

The Boise College Young Democrats met Sept. 14 in the SUB to make plans for the year.

Included in the plans was a proposal for opened discussions on current issues for the college.

Dr. John Caylor, advisor to the club, said elections would be held Sept. 28 to fill the remaining offices. President of the organization, by right of succession, is Beth Logan.

Boise College 'Broncos' 1967 FOOTBALL SCHEDULE

Home Games	
Sept. 30	Snow College
Oct. 7	Treasure Valley C. C.
Oct. 28	Ricks College (Homecoming)
Nov. 4	San Diego College
Nov. 18	Wenatchee College
Games Away	
Sept. 23	Everett Jr. College
Oct. 14	Mesa College
Oct. 21	Dixie College
Nov. 11	Yakima Valley College

She married him for better or worse—but not for good... Some folks have no respect for age unless it's bottled.

Cross-Country Team Gets in Shape For Season of Tough Competition

By JEFF HARTSHORNE
Roundup Sports Writer

This year a long-awaited sport, cross-country racing, has been started under the direction of Dr. Gene Cooper. A total of ten runners have turned out for the team and are presently getting in shape before starting organized workouts next week.

A schedule has not been worked out but the Bronco harrriers will be meeting teams from the College of Idaho, Northwest Nazarene, Treasure Valley Community College, Eastern Oregon College and Idaho State University, with hopes of having at least one meet here at Ann Morrison park. Each meet will see numerous teams competing against each other.

Team members are: George Wadsworth, a 5'9", 150-lb. sophomore from Pocatello, and letterman from last year's track squad, who owns a variety of enviable track marks. George is a Boise College mathematics major.

John Urresti, 6' 145 lbs., a freshman graduate of Bishop Kelly High School who owns a 49.4 time for placing third in the state in the quarter mile last spring. He plans to major in business.

Al McPherson, freshman, 5'7", 133 lbs, from Calgary, Alberta, Canada, is a graduate of Henry Wise Wood High School and a physical education major. He ran a 4:30.7 indoor mile and a 9:33 two mile and led his team to the Western Canadian Cross Country championship.

Also hailing from Alberta, Canada, is Doug Wood, who was graduated from Henry Wise Wood High School in Calgary. A freshman at BC, Doug is 6'½" tall and weighs 165. He is a music major.

Bob Bruns, a 5'9", 113-lb. sophomore, is a graduate of Borah High and is currently majoring in physics. Bob holds an 11:10 clocking for running cross country in high school and a 10:37 time for the two mile in track.

Freshman runner from Honolulu, Hawaii, is Ronald Lee Kwai,

who is 5'7" and weighs 134. He is a Castle High School graduate and is majoring in psychology at BC.

Jim Hatcher, 5'10", 145 lbs., is a BC freshman from Garden Valley High in Garden Valley, where he ran a 10:25 in the two mile. He is now majoring in Engineering.

John Kaufmann, a 6'2" freshman from Idaho Falls, ran the 440 in 49.1 in high school for second place in the Class A state meet and near 48 seconds flat as a member of the mile relay quartet on Idaho Falls' 1967 state champion team. John is majoring in physical education.

Jim Gutowski, a 6'2", 184-lb. freshman from Chicago's St. Francis de Sales High School, is majoring in physical education.

Gary Towle, a 5'1", 160-lb. freshman, is embarking upon cross country for the first time. Gary is a graduate of Boise High.

Al Cariaga, 5'3" 107-lb. freshman who has graduated from Nampa High, ran 10:59 as a member of Nampa's cross country team, which took the state crown two years in a row. Al also had a best of 5:06 in the mile run.

Larry Law is the last but not least member of the team. Larry is a 6', 140-lb. Kuna High graduate in his first year at BC, where he is a speech and drama major. He holds times of 9:52 for the two mile, a non-competitive time of 2:00 for the half mile and a 54 second clocking at last season's District III high school track meet. Larry also has the distinction of having been the only member of

LITTLE MAC'S

invites college students
20 years and older
to a

NEW YEAR'S EVE PARTY

Saturday, Sept. 30

Keep It Keyed

The Playboy key chain makes fine fastening for the keys to your kingdom. Finished in fine black enamel, with gleaming rhodium.

\$3.50



Playboy Tie Tacks 2.50



Playboy Coffee Mugs 2.50




Playboy Beer Mugs 5.00



Playboy Garters 2.00

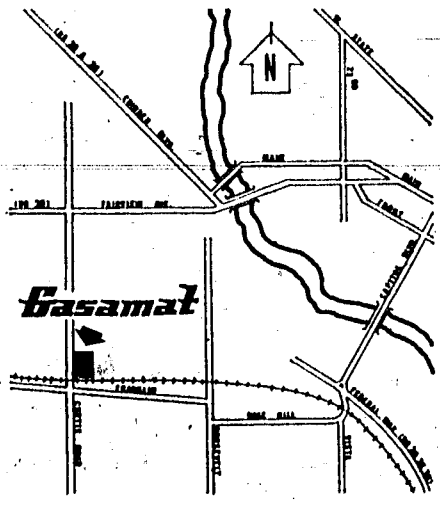


**ALEXANDER'S
CAMPUS SHOP**
Vista Village



COIN OPERATED SELF SERVICE

Throughout Rocky Mountain Region
HIGHEST QUALITY GASOLINE
Low, Low Price



BOISE
North Curtis and Franklin