

1-12-1977

## Arbiter, January 12

Associated Students of Boise State University

---

Although this file was scanned from the highest-quality microfilm held by Boise State University, it reveals the limitations of the source microfilm. It is possible to perform a text search of much of this material; however, there are sections where the source microfilm was too faint or unreadable to allow for text scanning. For assistance with this collection of student newspapers, please contact Special Collections and Archives at [archives@boisestate.edu](mailto:archives@boisestate.edu).

# opinion

## editorial

### It's time to clean up the act

Well, it is that time of year again. We all return to school to further ourselves in life -- that is, with the exception of a portion of our local student government. These so-called student leaders will return to do what they do best: make trouble and do their damndest to not cooperate with their fellow student representatives.

It is this action which gives student government its present state in the eyes of administrators and faculty. In other words, when you continue to act like a group of know-nothing children, you will continue to be treated like a group of know-nothing children.

I would implore these people to step back and look at what they are doing. If they do not and continue to carry on in the manner they have chosen, then we will truly be able to say that student government is a very petty attempt at local representation.

There is still time to change, but only if these people choose to become part of the solution rather than the main problems.

To the senators, the department heads and the selected officials of the Associated Students of Boise State University: It's time to clean up our act. The only alternative to our getting it together is for the mass outer side of the ASBSU to look at us with their worldly minds and muse, "Unis punctum omnis nasci est."

J.S.



**EDITOR-IN-CHIEF:** John Steppe  
**ASSOCIATE EDITOR:** Barb Bridwell  
**NEWS EDITOR:** Mary Struhs  
**SPORTS EDITOR:** Marty Most  
**LAYOUT EDITOR:** Bud Humphrey  
**LAYOUT ASSISTANTS:** Diane Barr, D. Allen Dalton  
**COLUMNIST:** Chuck Bufe  
**ADVERTISING MANAGER:** Helen Christensen  
**ADVERTISING SALES:** Don Clark, Debby Stanard  
**PHOTO BUREAU DIRECTOR:** Tom Mc Kercher  
**Photo Bureau:** Ron Ferguson, Randy Collier, Kevin Syms, Sandra Gibson  
**REPORTERS:** Julie Howard, Benjamin Tucker, Freddie Vincent, Rob Chastain  
**CIRCULATION:** David Outsen  
**CONTRIBUTORS:** Bruce Castle, Mark Brough  
**PROOFREADERS:** Karen O'Brien, open  
**STAFF ASSISTANT:** Loretta Jones

Established May, 1968, the ARBITER is a weekly publication of the Associated Students of Boise State University.

Articles and letters to the editor must be submitted to the ARBITER office prior to noon the Thursday before publication, must be typewritten and bear a legible signature. The ARBITER reserves the right to edit for libel and taste.

Opinions expressed in the ARBITER are those of the author and not necessarily those of the Student Administration, University Administration or the ARBITER staff.

the ARBITER is a member of the Rocky Mountain Collegiate Press Association, the College Press Service and the Columbia Scholastic Press Association.

The offices of the ARBITER are located on the second floor of the Student Union Building, Boise State University, 1910 University Drive, Boise, Idaho, 83725.  
**SPORTS DESK:** 385-1900  
**NEWSROOM:** 385-3401  
**ADVERTISING:** 385-1464



## the fifth column

### "Back in the U.S., back in the U.S., back in the U.S.S.R."

by Chuck Bufe

Are human beings marketable commodities? Apparently so, at least in Chile and The Soviet Union.

Last month the governments of Chile and the U.S.S.R. exchanged two political prisoners; the two were Luis Corvalan, head of the Chilean Communist Party, and Vladimir Bukovsky, a Russian dissident who has been active in the human rights movements in that country.

The Chilean junta and its apologists in this country, notably William F. Buckley, have been attempting to squeeze every last drop of propaganda value from the exchange. For God-know-what reason Buckley apparently feels that the exchange reflects favorably on the junta. Last month he devoted quite a bit of space in his columns to Chilean affairs; he not only dealt with the prisoner exchange but also repeated the junta's assertion, which he apparently accepts at face value, that it only holds 18 political prisoners (the news mags put the number at closer to 650).

The Russian elite, meanwhile, has been content with congratulating itself on giving Corvalan the 'opportunity' to come to the Soviet Union (no mention was made of Bukovsky or the 10,000 other political prisoners still held in Soviet jails and mental institutions).

And what an opportunity! As leader of a foreign communist party Corvalan will automatically become a member of the privileged class for the duration of his stay in the U.S.S.R. Estimates of the size of this class vary, the lowest I've seen being 250 thousand persons, the largest ten times that number.

What the authors of the various estimates are in agreement upon is the composition of that class. The Soviet privileged class is composed primarily of the upper echelons of the Communist Party, military, and government, along with a smaller number of persons in U.S.S.R.'s cultural and scientific establishments.

The privileges of this class are impressive: high wages--although Brezhnev is estimated (by the British magazine 'Survey') to receive a monthly wage of 900 rubles and some government ministers as much as 2000 rubles per month, the true income of these officials is incalculable due to their other privileges: they can shop at special stores, the "berysoska," where consumer goods are available at low prices (no standing in queues for these "Communists!)"-- a quart of vodka reportedly sells for \$2.30 in them, for example; and the Ministry of Health maintains a special chain of

clinics and dispensaries for their health needs. The above mentioned privileges aren't, of course, the only ones, but they do give a good indication of the status of the ruling elite in Soviet society.

The average Soviet citizen doesn't fare so well. She/he receives much lower wages than the elite, the wage of the average industrial worker being in the neighborhood of 150 rubles per month, about one-fourth the salary of most factory managers. And, the government controlling all unions and being the sole employer in the nation, there isn't much that the Soviet working class can do about its condition. Strikes are illegal (in Soviet theology the interests of the State and those of the people are supposedly identical, so striking workmen would theoretically be striking against themselves--how this merging of interests has taken place has never been adequately explained....transubstantiation perhaps?) and anyone who rocks the boat quickly finds him/herself out of a job with no prospects of finding another.

The average citizen is also saddled with a huge defense budget, which partially explains why wages are so low. In terms of GNP Soviet defense spending is almost twice that of the U.S.; in terms of dollars spent the amounts are roughly the same.

Alcoholism is endemic in the U.S.S.R. The average Russian consumes 8.5 quarts of hard booze per year, twice as much as his U.S. counterpart. And the Soviet state profits handsomely from the disease of alcoholism. The price of vodka in state stores is over \$5 a pint.

Consumer goods are rationed and Soviet consumers normally spend a few hours per day in queues waiting to buy goods. This is nothing new in the U.S.S.R., however, when Lenin, Trotsky & Co. took power in 1917 they instituted a system of rationing based not upon need but upon social position--guess who came out on top.

Civil liberties are, needless to say, virtually nonexistent in the Soviet Union. Anyone active in the human rights movement in that country can expect, at the minimum, to lose her/his job. Banishment from the cities and /or imprisonment often follows. As an example, last year Andrei Tverdokhlebov, Moscow secretary of Amnesty International, was exiled to Siberia for two years for "anti-Soviet" activities.

The disgusting condition of the Soviet press is too well known to need comment. Again, censorship is nothing new in the U.S.S.R. In 1917 Lenin and his Bolsheviks came to power

[cont. on page 6]

# Tenant vs. landlord battles still rage

by Ken Stern

(CPS)--It was not a pleasant ending to Mary Capito's vacation.

Mary was returning home, feeling relaxed and happy. As she loped up the stairs to her apartment, Mary made a mental note to pay her rent since it was already three days overdue. But approaching her front door, she quickly found out that wouldn't be necessary; she was greeted by a padlock and note which read, "Due to your failure to pay the rent on time, we have evicted you and have taken custody of your possessions."

Strange but true. It happens everyday in countless cities though most states have banned the practice, whose legal moniker is "forcible entry and detainer." It may be a throwback to the days of powdered wigs and "six gun justice," but landlord hassles are still as

common these days as acne, especially in student communities where the transient population causes a high rental turnover.

But relief from unscrupulous landlords is not hard to come by, if students would keep in mind a few simple principles. The first commandment of landlord/tenant relations is, "Thou shalt always carefully read thy lease, especially the fine print." Landlords will often try and slip in outrageous responsibilities or disclaimers including provisions which allow a landlord to take all your possessions if your rent is just five days late.

If, before signing your lease, you discover any such outlandish clauses, make sure they're crossed out and then signed by the landlord, unless you feel no particular attachment to your possessions.

One other problem area for

tenants--students especially--is the gloomy region of security deposits. The biggest racket in town isn't numbers running or interstate car theft, but rather the Great American Security Deposit Swindle. In most cases, when an apartment is rented the tenant is required to place a security deposit with the landlord which is supposedly designed to cover any damage caused by the renter during the period of tenancy. The rules say this deposit will be refunded when the tenant moves on. But that's not what always happens, even if the tenant leaves the place spotless. In reality, getting your money back is about as easy as saying "no" to an insurance salesman.

Landlords realize that most people, not to mention busy, transient students, won't take legal action even if they're "stuffed" on their hard-earned

cash. The landlord's modus operandi is to refund the money only after the tenant has initiated a lawsuit and seems determined to follow through, which is one reason why legal action is so effective in this area.

So, if your landlord is doing the security deposit shuffle, sashay down to your local small claims court and file an action. Most people don't realize how simple a procedure this is; the forms require little more than a working knowledge of English. Lawyers are not even allowed.

But before you make like Melvin Belli, be sure to check the local law regarding what is called "to notice" requirements which usually only involve sending the landlord an official letter demanding the return of your money.

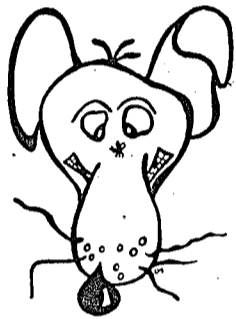
These problems highlight the fact that tenants have historically been abused due to inadequate legal safeguards and the lack of a strong tenant organization.

Tenant unions have not proliferated mainly because of

the dogged attempts of landlords to neutralize them. The latest tactic for example, is to use expensive lawsuits based on antiquated laws to bludgeon tenant unions into submission.

This maneuver is currently being waged by powerful landlords against Boston's city-wide Tenants First Coalition (TFC). Max Kargman, one of Boston's largest landlords whose fiefdom includes many students, has slapped a multi-million dollar lawsuit against TFC based on an ancient civil conspiracy law which most people felt had died a natural death decades ago.

The idea from the landlord's point of view is to divert the organization's energy from tenant organizing to defending against the lawsuit. Many tenant unions across the country have focused their attention, and in some cases money, on the Kargman lawsuit, the result of which will have a monumental impact on tenant organizing for many apartment hunters in the future.



## Stump Trivia Rat

1. What was the name of the Russian pilot exchanged in 1962 for Gary powers?
2. What is the other name of the Alaska Highway?
3. What was the name of the

4. What was the final year arrived at by the Time Traveler (H.G. Wells' The Time Machine)?

5. Who dubbed in the English voice for the Japanese Godzilla movies?
6. What are the names of the mice Mr. Jinks chases after?
7. What is optaphobia?
8. Who was the first recipient of the Nobel Peace Prize?
9. What are the 10 most common last names in the U.S.?
10. Who were the inventors of the television?

## Student exchange awaits final approval

by Helen Christensen

Final approval of the National Student Exchange at BSU is pending approval by the Idaho State Board of Education and the BSU Faculty Senate. The Faculty Senate is due to consider the program at their January 20 meeting. The BSU Student Senate approved the program last semester.

When final authorization is

granted by the State Board, BSU students will have the opportunity to exchange to any of thirty-five institutions in the United States, including Hawaii. Applications for exchange will begin with the Fall Semester of 1977. Information is available at the SUB Information Booth or by contacting Rene Clements at the Programs Board Office, second floor of the SUB.

Make your own ski package, skis, poles, boots, bindings. 10% DISCOUNT. Come in & talk, we've skied for years!

### THE BOOTWORKS

CROSS COUNTRY SKIS • RENTALS

515 MAIN 344-3821

## TYPING ERRORS

**ERROR-FREE TYPING**  
NYLON TYPING RIBBON  
CORRECTION RIBBON

**ERRORITE™** AT YOUR CAMPUS STORE

NOW ALSO AVAILABLE IN BROWN, RED, BLUE & GREEN

### - OUT OF SIGHT!

## The ASBSU Student Lobby

**is looking for a few good people.**

**If you:**

- want a chance to set your own hours
- don't mind a little hard work
- are interested in the legislature and a chance to meet people
- are concerned with the future of BSU
- want the opportunity to earn extra credits

**then this is the opportunity you've been looking for.**

**For more information or to apply contact the ASBSU Student Lobby Director or call 385-1440 at ASB offices, 2nd floor SUB.**

# from capital hill

## Andrus delivers farewell State of State address

by Barb Bridwell

Idaho Governor Cecil Andrus delivered his farewell State of the State message to the Legislature when they convened for the 44th Legislative session Monday.

Andrus said that many of the goals he set during his first message six years ago have been met. These goals "were designed to protect the quality of our life, to develop our national resources in a manner compatible with regard for the environment, and to enhance our human resources," he stated.

One of the objectives Andrus would like to see the legislature tackle is in the area of local government. "This is the year we must act to strengthen local government," he said. "In some instances, growth has already strained the ability of local government to adequately deal with the problems caused by growth. Others are moving toward that point. Piecemeal, band-aid legislation will not provide the long range solutions needed in this situation."

In order to solve this problem, Andrus is asking the legislature to create and fund the Idaho Local Government Task Force. The 15-member committee identify the major economic and social forces that will impact on Idaho's city and county governments during the next 25 years; identify the major problems these governments will face; analyze their capacity to deal with these problems; and recommend ways and means for upgrading these capabilities of local government.

Andrus said that "energy represents the single biggest

problem this state and the world faces today and in the foreseeable future." Last session the legislature provided tax credits for home owners who improved their homes by adding insulation or installed alternative energy devices.

The legislature this year has been asked to provide similar tax credits for the development of alternative energy sources and local energy systems.

Andrus is also submitting legislation to allow communities to form energy districts to develop energy for local use, including solar, geothermal, hydro or other types.

In other energy legislation, Andrus is requesting a bill which would require that prospective home purchasers be provided with a record of energy used in that home and the amount of insulation. For new homes, the bill would provide that the designed head load bear certified, as well as the amount of insulation.

Andrus is also asking for legislation dealing with siting of energy facilities. It would provide for time to study possible sites, for supply planning and public input and provide for adequate funds to examine proposals.

A state water plan will also be submitted this session. The plan is designed to establish minimum stream flow levels on the Snake River. Andrus stated, "I feel the streams tributary to the Snake also need to be assured of minimum flows and to this end I am submitting to the legislature a minimum stream flow bill."

Andrus said he is also submitting a proposal by the Water Resource Board for a project rehabilitating the Barber Dam on the Boise River as a low-head hydropower facility. The project would be self-funding, according to Andrus, and would demonstrate the feasibility of low-head hydroelectric projects in Idaho.

There is currently a surplus in state funds for water pollution control Andrus said, and therefore the Department of Health and Welfare will submit legislation to use this surplus for providing 90 per cent of the cost

of sewage treatment facilities for local communities. The community will pick up the other 10 per cent. Currently the federal government provides 75 per cent of the cost, with the state providing 15 per cent and the community 10 per cent.

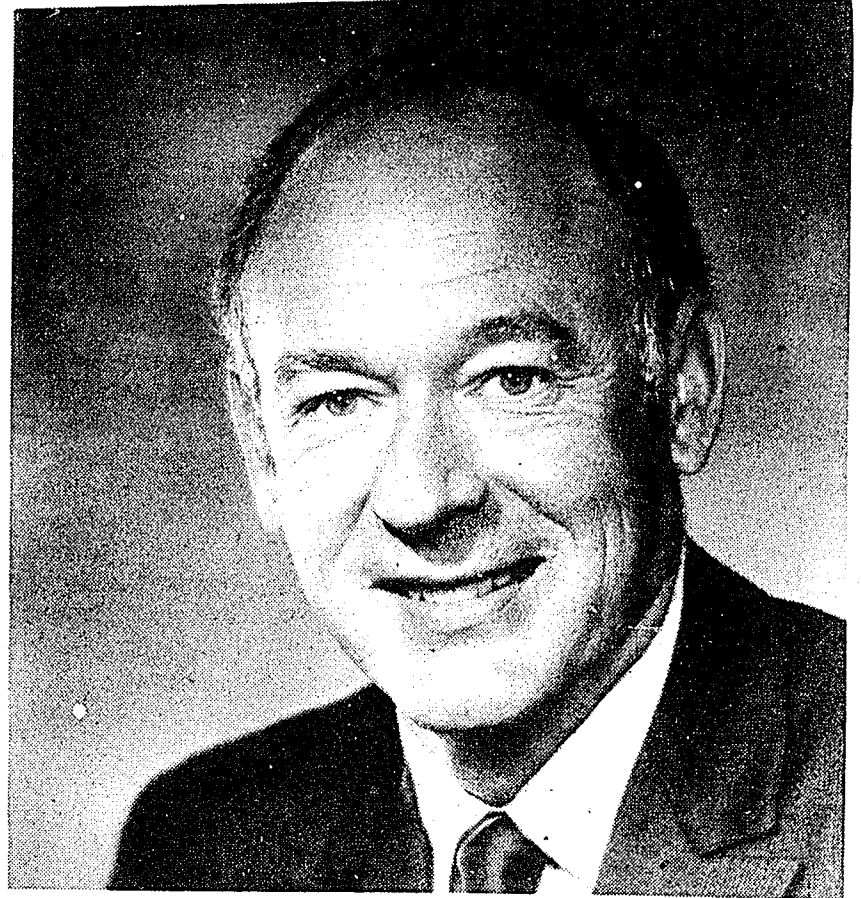
In the area of education, Andrus stated, "We have made important strides in the past half dozen years in improving the education opportunities for Idaho's youth. State funding of public education has increased from about 49 per cent to 63 per cent. We have greatly increased the funding of higher education." He is proposing to divert one million dollars from the Water Pollution Control Fund, and \$200,000 annually from the surplus in the Liquor Fund, to the Building fund.

Andrus is also endorsing a program by the State Department of Education which would require testing of proficiency of high school students in math, reading, writing and spelling.

"Violent crimes continue to increase Idaho," Andrus said. He recommended that the legislature reconsider a bill introduced by Senator Mike Mitchell in 1973 which provides for mandatory prison sentences, without the possibility of quick parole, when firearms are used for the commission of a crime.

Finally, Andrus recommended that because of the poor election voter turnouts, that the primary elections be held on the fourth Tuesday in May and be combined with the Presidential Primary in appropriate years. He added that this might encourage a regional presidential primary. He also urged the legislature to consider the possibility of making election day a legal holiday to encourage voter turnout by substituting election day for another legal holiday.

Andrus, who was recently appointed Secretary of the Interior by President-elect Jimmy Carter, will leave later this month for Washington. He will be replaced as governor by Lt. Gov. John Evans.



Cecil Andrus, Idaho's governor since 1970, has been selected for the post of Secretary of the Interior by President-elect Jimmy Carter.

## Legislature termed 'rehash' of the past

by Barb Bridwell

Much of this year's legislative business will be a rehash of the last several years, if proposed legislation says anything about the minds of the solons.

The landlord-tenant bill will again be proposed, and as in past years, proponents say it has a good chance of passing. This year they may be right. Meetings have been conducted with both landlord and tenant organizations to establish a compromise bill to solve the problems in the current Idaho landlord-tenant law.

According to spokesmen for the groups, compromises have been reached on security deposits and how much notice a landlord must give a tenant before rental agreements may be changed.

The Equal Rights Amendment (ERA) will be back for the fifth year as opponents try to have the act repealed. Since the bill passed in 1972 with little opposition, groups, notably the Stop-ERA and Tax Payers Voice organizations have been attempting to get it repealed. They have been stopped each time by a requirement that the measure must have a two-thirds vote to be rescinded.

One way or another, the ERA question must be answered before March of 1979. Four

SELL INFORMATION

Stuff Envelopes

\$25.00 PER HUNDRED

Immediate Earnings

Send \$1.00 To:

Envelopes Dept. 226A

102 Charles Street

Boston, Mass. 02114

more states, for a total of 38, must still ratify the ERA nationally or it will die.

Attempts to repeal Idaho's 1975 land-use planning act will be made again this session. Although the act is not expected to be repealed, representatives indicated they would not act favorably toward any more such legislation.

The Sunshine Law will be discussed again this year, although only to make changes. The Sunshine Law is the campaign finance reporting law.

Included in the changes are provisions to require five campaign finance reports from candidates, dropping the \$15 filing fee as a contribution, clarifying what must be reported in campaign disclosure statements, reducing the period of time the Secretary of State's office must keep Sunshine Law files and require identification of the author of political advertising.

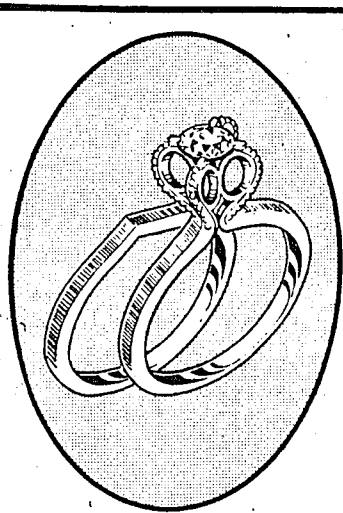
A constitutional amendment will be introduced to return the legislature to biennial sessions. The reason for the proposed change according to sponsor Senator Edith Miller Klein, is that the second session is just a re-run of the first session.

The legislature will also reconsider combining the August primary with the May presidential preference primary. This, too, was first introduced last session.

A bill allowing cities and counties to levy a sales tax, liquor by the drink tax and a hotel tax will also be introduced this session. However, even if this passes the legislature, 60 per cent of the voters in the state of Idaho must approve it before it may go into effect.

In the area of higher

[cont. on page 7]



RHAPSODY

by Orange Blossom

Shop where terms are convenient. Atmosphere pleasant and your patronage appreciated. Give us a try.....

Molenaar's Jewelers

1207 Broadway

**BUDGET**

TAPES AND RECORDS 1233 BROADWAY

COLUMBIA'S newest by Kansas, Phoebe Snow, Charlie Daniels-LPs \$3.99 & Tapes \$4.99

'A Star Is Born' Dave Mason Live' 50% off on LPs & Tapes

Phone: 336-4122

# campus news

## Financial aid forms available

Career and Financial Services has announced that all three financial aid applications for academic year 1977-78 are now available. Students who wish to apply for scholarships should complete the forms now. To apply for the larger, "need-based" scholarships, students should request the ACT (ACT Common Form) document that is used to measure financial need.

Career and Financial Services urges dependent students especially to pick up all available application forms before February 1. This will provide time for students and their parents to prepare forms and information

that will have to be filed by February 1 and March 1.

To insure priority consideration dependent and independent students must follow these instructions:

1. Students applying only for academic scholarships (based on merit) file the BSU application for financial aid by February 1. You should request a copy of your transcript from the Registrar's Office after fall '76 grades have been recorded, and attach the transcript to your application. Incomplete applications and applications without transcripts will not be considered.

2. Students applying for "need-based" scholarships should follow instructions in No.

1 and also file the ACT Common Form by March 1, 1977.

3. Undergraduate students applying for grants, loans, and work-study employment must file the ACT Common Form and the 77-78 Basic Educational Opportunity Grant application. Priority deadline is March 1, 1977.

The ACT Common Form will be accepted after that date as long as funds last. The Basic Grant application can be filed after March 1 critical date also.

All students must reapply each year. The three forms are available in the Career and Financial Services Office, Adm. 117, Monday through Friday from 8 a.m. to 5 p.m.

## Department to host teacher clinic

This Friday and Saturday (Jan. 14-15), the Department of Music of Boise State University will be hosting the Gem State Chapter of NATS (National Association of Teachers of Singing) in a two-day voice clinic for voice teachers, choral directors, and singers, in the Special Events Center, with the noted Basso-Cantante Dr. Ralph Appelman of Indiana University as the clinician.

Of particular interest to the general public will be the Friday morning mini-recital presented by Dr. Appelman at 10:00 a.m. Among the selections Dr. Appelman will sing be Aleko's CAVATINA from the opera "Aleko" by Sergei Rachmaninoff. Dr. Appelman is particularly known through the country for his title roles in BORIS GODONOV and THE MOST HAPPY FELLA.

Also of interest to the general public will be the 7:30 p.m. Friday evening concert, presented by singers from private studios and colleges and universities in the Northwest.

Tickets for the Friday morning and evening concerts will be \$1.50 each and will be available at the door (Special Events Center).

Clinic sessions will be: Friday, 11:00 a.m. --Breath Support. 1:30 p.m. --Breath Support applied to Literature. Saturday, 9:00 a.m. -- Teaching Registration to the Male, Teaching Registration to the Female, Master Class in Critique of Vocal Literature, with Dr. Appelman, Julia Kole, Gary Bratt, and other singers in demonstration. 1:30 p.m. -- Master Class on Critique of Vocal Literature.

Clinic registration will begin Friday morning at 9:00 a.m. Registration fees will be: \$5.00 for two days (including all sessions and recitals; \$3.00 for one day.

All events will be held in the Special Events Centers on the BSU campus.

Dr. Appelman has recently served as a principal panelist at the National Convention of NATS in Philadelphia.

## Tri Deltas sponsor scholarship

Studies have shown that many scholarships, small in size but always filling a budgetary hole or two, go begging for applicants at the same time that many students are scratching for college funds.

Applications are now being taken for such "smaller" scholarships, the annual Service Projects Scholarships given by Delta Delta Delta. This year one award of \$150 will be made to a

full-time undergraduate woman student.

In addition, the local winner is automatically eligible for one of the national awards of \$1,000 without further applications, form-filling or line-waiting.

Academic record, contribution to campus life, promise of service in their chosen field and financial need are among the criteria considered.

Application forms are available from the Director of

Financial Aid, Dean of Students or the Service Projects Chairman of the campus Delta Delta Delta chapter. Completed applications must be returned on or before March 1st, 1977.

Since 1943, Tri Delta has awarded a total of over \$903,777 in campus scholarships. Approximately 55% of these scholarships have been given to unaffiliated students, 30 % to Tri Deltas, and 15 % to other Panhellenic members.

## Functions of 'Campus Store' listed

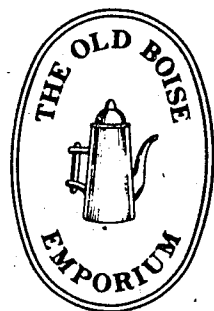
by Helen Christensen

The BSU Campus Store is an independent auxiliary service of Boise State University. The store is a self-supporting enterprise owned and operated by Boise State. Its main purpose is to serve the students, faculty and staff with all the required tools of education and related items as economically and efficiently as possible.

To adhere to the various publisher returns policies and to maintain a healthy cash flow, unsold textbooks will be returned to publishers beginning 30 days after Fall and Spring

Semesters begin and 10 days after Summer Sessions. Therefore, we recommend the textbooks be purchased as early as possible after you begin attending classes to assure their availability.

Your Campus Store has an effective anti-shoplifting program and persons apprehended WILL BE PROSECUTED.

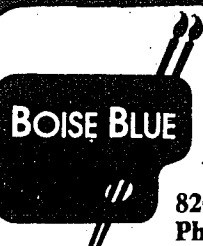


Freshly Roasted  
Coffee Beans,  
Teas & Spices  
Unique Cookware

570 Main Old Boise

We want to welcome you back to school from our new address at 820 JEFFERSON  
**10% discount to students the first 3 weeks of the semester**

open 'til 9pm,  
Jan 17-21  
for your convenience



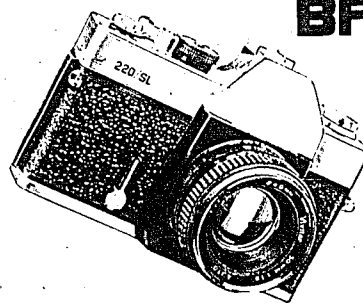
820 Jefferson  
Phone 343-2564  
Monday-Saturday  
9am-5:30pm

## VOICE CLASSES

Beginning - Intermediate  
All Types Of Music  
DUNKLEY MUSIC  
Call 342-5549  
Register 6:30 Tues 18

## BALLOU-LATIMER CAMERA SHOP

YEAR END CLEARANCE SALE



STARTS FRIDAY  
JANUARY 14th

GREAT SAVINGS ON A WIDE SELECTION OF PHOTOGRAPHIC EQUIPMENT

including CAMERAS, LENSES, TRIPODS, GADGET BAGS, ENLARGERS, PROJECTORS, MOVIE CAMERAS, SCREENS.

A SPECIAL SALE OF QUALITY STEREOPHONIC EQUIPMENT INCLUDING AMPLIFIERS, RECEIVERS, TURNTABLES, TAPE RECORDERS & SPEAKERS WILL BE FEATURED IN THE SOUND ROOM AT OUR WESTGATE MALL STORE.

ATTENTION ALL PHOTOGRAPHY STUDENTS! BE SURE TO REGISTER WITH US FOR YOUR BALLOU-LATIMER STUDENT DISCOUNTS on the purchase of photographic supplies required for your photography classes.

See our ad in Friday's statesman for details.

Ballou Latimer Co.

Downtown

Westgate Mall

# Report of BSU to Board of Education

[cont. from page 1]

campus. As already seen, the present gym is not only too old and too small, but it faces condemnation because of safety factors. This means that unless expensive alterations and improvements are instituted, Boise State students will have to forego concerts, entertainments, and large meetings unless they go far off campus which will doom the future of such activity. However, even if such alterations and improvements are made we will still have a facility which is too small, inadequate, and unsatisfactory.

They also must consider the effect of the lack of a facility on the athletic programs at BSU. Most important is the need for

facilities to bring the women's programs up to the quality and quantity not only demanded by law, but demanded by the excellence they have produced in spite of the lack of facilities. They also must visualize effect of a failing athletic program on the academic side of the University. Leaving aside the strictly educational aspects of a broad, well-rounded athletic program as a part of the total academic picture, the student leaders at Boise State University recognize the fact, as developed by surveys at the University of Wisconsin and Northwestern University, that strong and successful athletic programs attract money to an area and enhances that area's economic picture. This in turn activates interest in the school which produces greater gifts for the academic program in the form of chairs, scholarships, building funds and the like. Maclean Stevenson says that in his early job of fund raising for Northwestern University that the gifts to that institution increased by Sixty million dollars in the three years after Ara Parseghian was hired and began to produce winning football teams.

The campus organizations must view the future without such a facility with great distaste. Already encumbered with a lack of meeting and office spaces and without areas in which to hold activities, the growing numbers of these

organizations must struggle just to keep even. The impact of a facility to alleviate the problems caused by lack of space in the comparatively new Student Union Building is tremendous.

It is because time is needed to garner student reaction to the proposal of a multi-purpose pavilion that the Board is requested to forego any considerations of student fees until the February Board meeting.

What will be student reaction to the proposition that if such a facility is constructed it must be constructed with student fees?

This involves the question of whether student fees between

the three institutions of higher education in Idaho should be equalized. That there is a discrepancy between the three schools is admitted. It should be noted, however, that whatever discrepancy exists both the University of Idaho and Idaho State University, both with smaller actual student populations than Boise State, already have and are paying for the type of facility now being studied for the BSU campus.

Again the answer to the question must await the survey to be undertaken at registration time for the Spring semester. While no large scale survey of

student opinion has as yet been made, student leaders have assured the Committee that if fees are to be increased the student body desires that the increment of any such increase be used on the Boise State campus for whatever purpose, construction-wise, the students desire. In other words, if the student body is to pay more fees, the students comprising that body desires that the funds be used to enhance Boise State University.

Again, this is a basis for requesting the Board to forestall any decision either on a facility or on a fees until its meeting in February.

## Soviet-style freedom.....

[continued from page 2]

to power largely by mouthing slogans demanding civil liberties and direct democracy. On the second day after he assumed power Lenin reinstated censorship.

As bad as this is for the Soviet people, it's also had very regrettable consequences for the rest of the world. In a very real sense the victims of the Soviet Union include not only its own people and the victims of its military aggression (need I mention East Germany, Hunga-

ry and Czechoslovakia?), but the rest of us as well. We all live with the constant, hideous threat of nuclear annihilation.

Also, the monstrous example of the Soviet Union has provided the ruling class in this country with an extremely effective propaganda weapon. The schools and mass media have persuaded the bulk of the population that there is no alternative to our present socio/economic order except the Soviet model. Thus, we're presented with a choice somewhat akin to choosing between being shot or burned at the stake.

including a very privileged ruling class; and it retains the wage system, the heart of capitalism.

Once again, don't expect to see much discussion of these matters in the mass media.

\*\*\*

Bill Buckley's columns have been rather interesting of late. In addition to beating the drums for the Chilean junta, Buckley has been campaigning to have E. Howard Hunt released from prison. Buckley is upset by what he considers the excessive sentence given Hunt for his part in the Watergate break-in.

There are alternatives, but you're not likely to hear about them in either the mass media or in the publications of the various 'socialist' and 'communist' parties.

Perhaps the sickest aspect of the situation is that Soviet propaganda, the mass media, schools, and the followers of Lenin in our country (both the power cravers and the starry-eyed idealists who cling, despite all evidence to the contrary, to the belief that the U.S.S.R. is a land of freedom and equality) have convinced most people that the Soviet system is 'communism.' In reality, the Soviet system can be more accurately described as state-capitalism. The Soviet Union is a rigidly controlled hierarchical society; it has very definite social classes,

In one column, Buckley tendered a heart rendering account of the pitiful state of Hunt's family caused by Hunt's imprisonment and the death of Hunt's wife in a plane crash. Strangely, Buckley dated her death chronologically, failed to mention that it occurred in the middle of the Watergate cover-up, and also failed to mention that she had \$100,000 in cash in her possession at the time of the plane crash.

In the same column Buckley referred to Hunt simply as a 'friend.' Curiously, he failed to mention that their friendship dated from the early 1950s, a period during which both Buckley and Hunt were CIA agents stationed in Mexico City. Strange.....



Saint John Bosco

**SALESIANS WORK FOR THE BOY OF TODAY.**

**BUILD THE MAN OF TOMORROW.**

The apostolate of the SALESIANS OF ST. JOHN BOSCO is with youth in boys clubs, technical and academic high schools, guidance centers, summer camps, orphanages, hostels, etc. But the SALESIANS also conduct world wide missions, parishes, retreats, publishing houses and film centers.

**ST. JOHN BOSCO'S METHOD PREVENT EVIL with REASON, RELIGION and KINDNESS**

For more information about the Catholic Society of SALESIAN Priests and Brothers clip and send this coupon to

**Father Larry Byrne, S.D.B. DON BOSCO-SALESIANS 1100 Franklin Street San Francisco, CA 94109**

I am interested in the Priesthood  Brotherhood

NAME .....  
 ADDRESS .....  
 City ..... STATE .....  
 ZIP ..... PHONE .....  
 EDUCATION .....  
 AGE .....

**The most exciting original motion picture event of all time.**

**King Kong**

Copyright © MCMLXXVII by Dino De Laurentis Corporation All Rights Reserved

Dino De Laurentis presents a John Guillermin Film "King Kong"

starring Jeff Bridges Charles Grodin Introducing Jessica Lange

Screenplay by Lorenzo Semple, Jr. Produced by Dino De Laurentis Directed by John Guillermin Music Composed and Conducted by John Barry

PG PARENTAL GUIDANCE SUGGESTED Panavision in Color A Paramount Release

**FairVu CINEMA**  
 Fairview Ave. & Maple Grove 375-6600

**While we may not be the strangest bookstore in the world... WE'RE ONE OF THEM!**

**OBSERVER BOOKS**  
 471 Main under the Belgravia

# Spiderman to battle teenage pregnancy

(CPS)-Pubescent baby-makers beware!

Planned Parenthood has joined with Spiderman to battle teenage pregnancy. In a new comic book entitled "The Amazing Spiderman vs. The Prodigy," which is being distributed to public schools and other facilities, the superhero takes on The Prodigy, a green-skinned fellow from the planet Intellectia who has a voice that draws people to him "like a vacuum cleaner." He has visited Planet Earth to encourage the world's youth to get together and provide offspring who will be used as child labor back on Intellectia.

"How I love the way I get them to swallow all the sludge I hand out," he leers. "Imagine! They really think you can't get pregnant before you're 15, or the first time you have sex, or if you only do it once in a while." Spiderman is not impressed.

"What jive stuff this turkey hands out," he thinks.

But just as The Prodigy is ready to appear on national television to tell the youth that pregnancy clears up acne, the superhero beats the stuffing out of the sex offender, all the while admonishing him in front of the TV audience: "now they can see what a gnome-dome you are!"

Says Marvel Comics director Stan Lee, who provided the group's services gratis, "when a million or more teenagers are getting pregnant each year for want of good education or birth control help, it's quite in character for Spiderman to want to do something about it."

Concludes Jack Hood Vaughn, the family planning group's president: "We don't claim to have covered more than a fraction of the ground in this Spiderman adventure, but if it serves to prompt readers to find out more, from the right sources, it's done its job."

## Legislative 'rehash'..

[cont. from page 4]

education, the State Board of Education has proposed an 11 per cent increase for Idaho's institutions of higher learning. They are expected to ask for a lump sum appropriation of \$54,519,500 for the 1977-78 school year compared to \$49,144,400 for the current year.

If the budget is approved, Boise State University would receive \$14.6 million; Idaho State University, \$15.6 million; University of Idaho, \$21.6 million; and Lewis-Clark State College, \$2.3 million. This year BSU received \$12.9 million; ISU \$14.3 million; U of I, \$19.6 million; and LCSC \$1.9 million.

Several proposals in the area of law enforcement will be introduced. One will deal with fixed sentencing as an alternative to indeterminate sentencing. The other would suggest guidelines for trial judges,

placing emphasis on rehabilitative parole, unless imprisonment was required because of other grounds.

Another bill in the area of law enforcement being lobbied for by the Department of Law Enforcement and the Idaho Sheriff's Association would prohibit bars from having unsealed liquor bottles after hours unless they were locked up.

There also may be an attempt to request Congress to raise the 55 mile-per-hour speed limit.

\*\*\*\*\*  
**Pancho Villa's**  
**Tequila Party**  
 starting Monday Jan. 17th & every Monday from 8pm-12pm  
 all shots of Tequila 50 cents  
 7 Drawings an hour- T-shirts, sombreros, belt buckles to be given away on the first night  
 Enjoy pinball, foos & pool.  
 Dance to the best disco music in Boise  
**UNCLE SAM'S DISCO**  
 712 N. ORCHARD  
 (formerly the Turtle)  
 \*\*\*\*\*

*It's the fun-to-eat dessert.*  
 You can now get creamy, tart, luscious  
**SOFT SERVE YOGURT**  
 Free samples in raspberry & strawberry  
**CHOW NOW DRIVE INN**  
 1273 S. Orchard 1905 Broadway



# messenger service

Announcements, notices of meetings, student classifieds and personals are printed free of charge in the ARBITER MESSENGER SERVICE. Items must be submitted by Thursday noon.

## The Arbiter

is always looking for a few good writers

Check it out...  
 in the Arbiter office,  
 second floor SUB

**ELECTION BOARD announcements.** January 24--The Student Lobby Survey will be conducted in randomly selected classrooms and in the Lobby of the SUB.  
 February 1--ASBSU Petitions due for Student Government Elections. Petitions may be picked up in the ASBSU office, 2nd floor of the SUB.  
 February 16 & 17--Primary Elections.  
 March 9 & 10--General Elections.

**WANTED:** \$100 award for ideas leading to the execution of Spring Special Events Week 1977. For further information contact Steve Robertson, Chairman of the Programs Board 385-1223 or come to 2nd floor of the SUB.

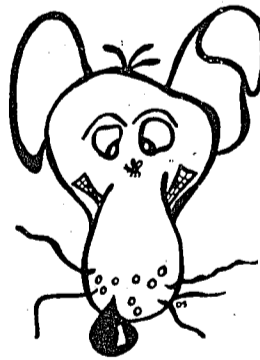
### announcements

**REVISED CAMPUS STORE hours for registration 1977--The 1977 Spring Semester Campus Store hours will correlate with registration as follows: Monday - Friday, Jan 3, 4, 5, 6, 7, --8:00 a.m. to 4:30 p.m. Beginning Monday, Jan. 10th--Regular hours of -- 8:00 a.m. to 5:00 p.m. except as follows: Friday, Jan. 14th -- 8:00 a.m. to 9:00 p.m. Saturday, Jan. 15th -- 9:00 a.m. to 12:30 p.m. Monday, Jan. 17th -- 8:00 a.m. to 4:30 p.m. & 7:00 p.m. to 9:00 p.m. Tuesday, Jan. 18th; Wednesday, Jan. 19th; Thursday, Jan. 20th --8:00 a.m. to 4:30 p.m. & 6:30 p.m. to 8:30 p.m. Friday, Jan. 21st. -- 8:00 a.m. to 5:00 p.m. Saturday, Jan. 22nd -- 9:00 a.m. to 12:00 noon. Monday, Jan. 24th, we will return to our regular Manday through Friday 8:00 a.m. to 5:00 p.m. hours. Closed Saturdays -- Textbook refunds will begin on Wednesday, Jan. 26th.**

**ALL GIRLS interested in Boise State University Sorority Rush, please contact the Programs Office for more information. Rush will begin February 10, 1977.**

### help wanted

**UPPER DIVISION STUDENT** needed as reader for Business major. \$2.00 an hour. Call Noel Newhouse 344-9264.



Answers to Trivia Rat  
 page 3

1. Colonel Rudolf Abel.
2. Alcan Highway
3. Captain Crawford-- played by Trevor Howard.
4. 802,701 A.D.
5. Raymond Burr
6. Pixie and Dixie
7. fear of opening one's eyes.
8. Jean H. Dumant, 1901, founded the International Red Cross.
9. Smith, Johnson, Williams, Jones, Brown, Miller, Davis, Anderson, Wilson, Thompson.
10. Vladimir K. Zwarykin and Philo T. Farnsworth.

**THE ARBITER NEEDS** several competent news reporters and contributors, and one proofreader. Interested persons please inquire at the Arbiter office, Owyhee Room, 2nd floor of the SUB.

**IF YOU ARE A beautiful, gorgeous, blonde, height 5'7", with green eyes, that is a good lay out technician, enjoys advertising and are willing to work for \$25 a month --- then we have the job for you --- Chairperson of the Publicity Committee for the Student Union Program Board. Will consider other applicants that have advertising experience, also.**

Have you ever yearned to be a published pervert?

Submit your material for the National ARBITER right away!

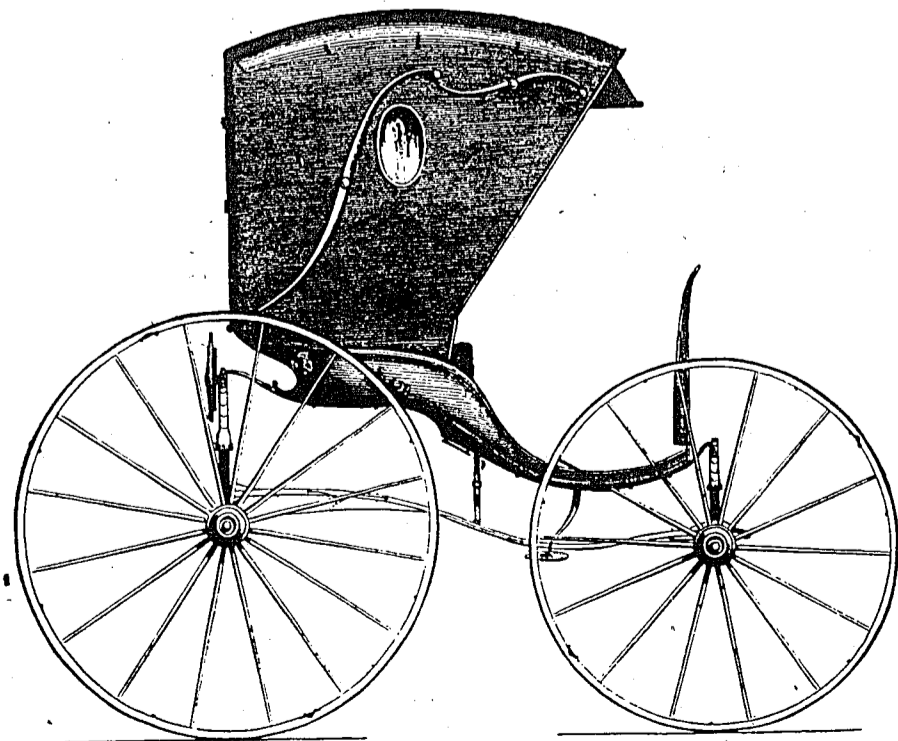
# SPRING SPECIAL EVENTS WEEK MAYBE COMING!?!?

An annual Programs Board 'mind boggling experience' is approaching the BSU campus again.

We are looking for ideas and a full-time student to be chairperson. In the past the Programs Board presented the "Great Lunch", a sandwich longer than a football field, which won a Guinness World Record; The Renaissance Fair; Western Bicentennial Week complete with a rodeo and barbecue; and Nostalgia Week, a sentimental journey into the 50's.

The Programs Board is now looking for another unusual Special Events Week, to take place after spring break. **WE WILL CONSIDER ANY IDEAS--** so let your imagination run loose then run up to the second floor of the Student Union Building and tell your ideas to us.

If you are a creative, ambitious, full-time student that would like to involve yourself in planning and being in charge of Special Events Week you may be eligible for the \$100.00 service award besides having a great time.



Steven D. Robertson  
Chairman S.U.P.B.



THE ASBSU PROGRAMS BOARD PROUDLY PRESENTS



JANUARY 21 [1977]  
THE STORY OF ADELE H.

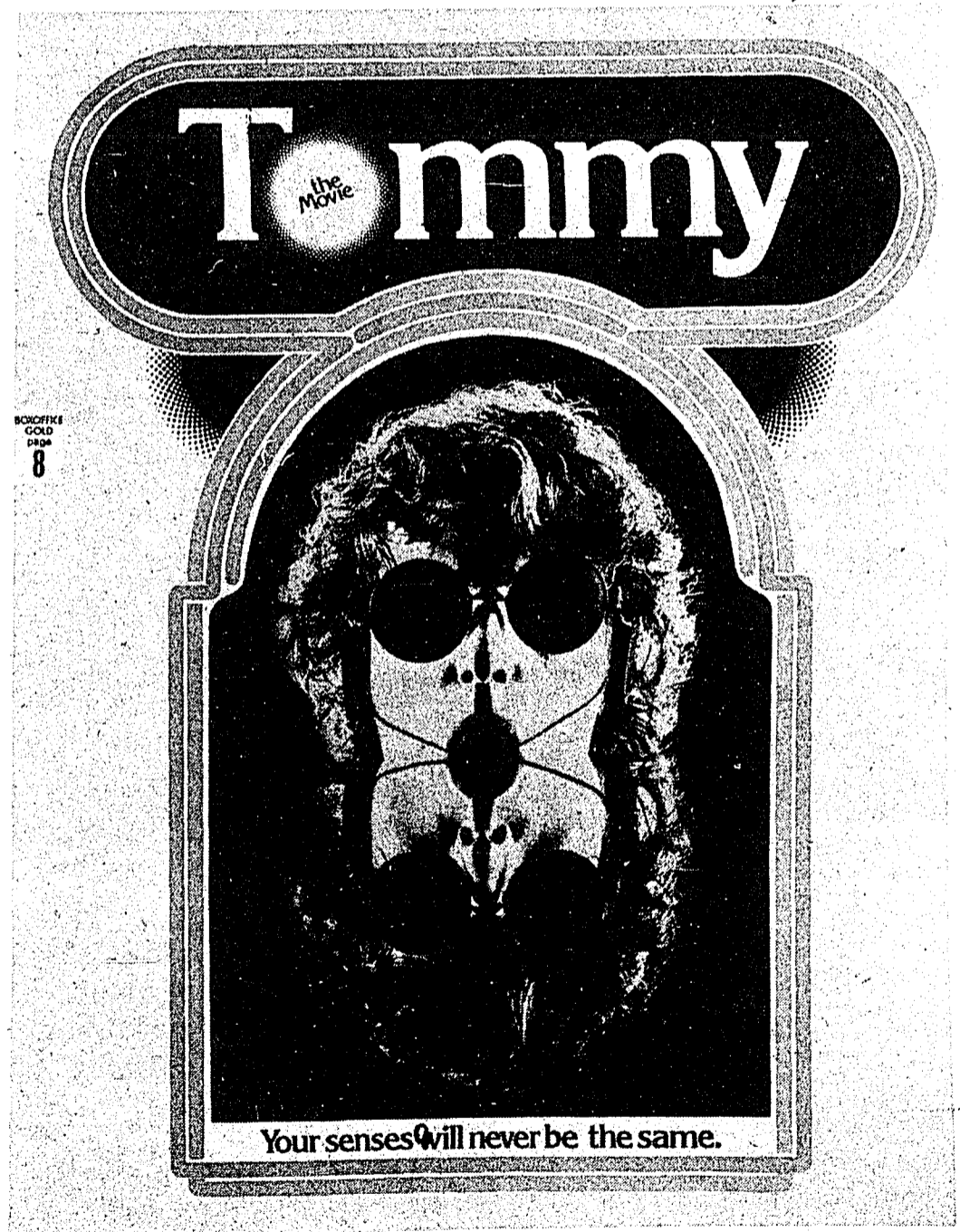
FRANCOIS TRUFFAUT - FRANCE

Truffaut's fascinatingly gloomy love story revolving around the younger daughter of Victor Hugo. Isabelle Adjani immerses herself in the character of a woman who, overshadowed by an illustrious father and preferred sister, discovers a peculiar identity in her unrequited passion for an English officer. Not the supposedly sunny and generous love characteristic of women, it is a passion that feeds on itself and finally consumes its vessel in a madness at once divine and utterly desolate.

**BEST ACTRESS**  
— New York Film Critics  
**BEST ACTRESS**  
— National Society of Film Critics  
**BEST ACTRESS**  
— National Board

Special Events Center  
7:00 p.m.

JANUARY 16 -  
BALLROOM 8 P.M.



"Tommy is dazzling spectacle that demands and holds the interest. It stuns the senses in a swirl of color, energy and excitement." The greatest rock-visual extravaganza ever recorded on film.

# Broncos prepare to face ISU

by Marty Most  
Arbiter Sports Editor

It's probably a good thing Idaho State University plays in the Big Sky Conference. A good thing for the Pac-8, anyway, where ISU's 98-73 trouncing of California would give them the conference lead. And a good thing for the Pacific Coast Athletic Conference, where ISU's 3-0 record, compiled against PCAC leaders Fresno State and Santa Barbara, would give them that league's first place. But it's the Bengals' 2-0 Big Sky mark and lead that will be the object of the Boise State basketball team's attention when the two clash in the Minidome Friday night at 8:00 pm.

All this is not to say that ISU is invincible. But it's taken the likes of Brigham Young, Marshall and Louisville to beat the Bengals, and those were all road games for coach Jim Killings-

worth's team. To make matters worse, Boise State has never beaten the Bengals in the Minidome. The clincher: ISU wants to avenge a twelve-point loss to the Broncos in last year's Big Sky tournament.

BSU, however, has a few things going for it. Like a one-point loss to BYU, a team that took the Bengals apart 102-84 earlier in the season. Then there's the vastly improved post play of Bronco center John Mayfield, who grabbed 19 rebounds against Gonzaga.

Idaho State is led by two All-Big Sky performers, 7-0½ Steve Hayes, center, and 6-7 swingman Greg Griffin, both seniors.

Hayes is ISU's second leading all-time scorer and the Big Sky's fifth leading point producer with 20 ppg. His 11 rebounds per game, best in the league, make Hayes a marked man. The reason he remains effective is

the rest of the Bengal quartet.

If you concentrate on Steve Hayes, Griffin can rip you with short jumpers. Or 6-10 forward Jeff Cook will put down 54% of his shots. Or perhaps guard Ed Thompson's outside shooting will turn the trick. Meanwhile Griffin and Cook can pull down the rebounds that Hayes isn't getting. And if it's intimidation you have in mind, you can't get too physical, for Hayes, Thompson and forward Brand Robinson are among the Big Sky's best free-throw shooters.

Stopping Steve Hayes isn't the only thing on Bronco coach Bus Connor's mind. "If we rebound and play like we have been, I feel we have an excellent chance," Connor says. "The key will be rebounding with them. The key isn't necessarily to stop Steve Hayes. We have to stop some of their other people."

The Broncos are back on the road Monday, January 17

against Oregon State. The Beavers have a 7-7 overall record and are 1-1 in the Pacific-8 conference.

OSU features a top guard in 6-2 Rocky Smith (17.6 ppg) and a top frosh center in 6-10% Steve Johnson (16.2 ppg, 6.4 rpg). Other starters are forwards Don Smith (6-7, 12.1 ppg) and Ricky Lee (6-6, 7.1 ppg) and 6-4 guard George Tucker.

Game time is 9:00 pm Mountain time.

Boise State's educational television station, KAID, will broadcast the Boise State-Idaho State basketball game live from Pocatello's Minidome Friday. The pregame show is scheduled for 7:50 with the tipoff at 8:00.

KBOI-AM radio will also broadcast the contest.

## Home Game Ticket Info

Full-time students must pick up tickets in advance for each home basketball game. The maximum number of student tickets available will be 2,000. Each full-time student may pick up one free ticket with his activity card. The activity card and ticket must be presented at the door for admission to the game.

The number of part-time student, student guest and general admission tickets available will be determined by the number of student tickets dispersed. There will be no student tickets dispersed after the pick up deadline. Students wishing to obtain tickets after this time may purchase general admission tickets, depending on availability.

General admission tickets and student guest tickets will be available at the gymnasium the night of the game, depending on

availability. Full-time students may purchase one guest ticket and part-time students may purchase one ticket only for \$1.50.

A student spouse activity card, which is good for admission to all regularly scheduled athletic events during the spring semester will be available at the Varsity Center following spring semester registration. The cost of the card will be \$7.50. An admission ticket for each game must be picked up for the student spouse card before the deadline date. The student spouse card and the ticket must be shown at the door for admission to the game. A full-time student waives his option to purchase a guest ticket after he has purchased a student spouse card.

Tickets will be available at the Varsity Center and at the Student Union Building.

Date	Opponent	Tickets available on	until
Jan. 22	Idaho State	Jan. 17	Jan. 20, 5:00
Jan. 28	Weber State	Jan. 24	Jan. 27, 5:00
Jan. 29	Northern Arizona	Jan. 24	Jan. 27, 5:00
Feb. 11	Montana	Feb. 7	Feb. 10, 5:00
Feb. 12	Montana State	Feb. 7	Feb. 10, 5:00
Feb. 25	Gonzaga	Feb. 21,	Feb. 24
Feb. 26	Idaho	Feb. 21	Feb. 24, 5:00

## Bronco women stampede foes

by Julie Howard

The Boise State women's basketball team took to the Montana road last weekend and returned to Boise with a 70-51 victory over Montana State University and a 66-35 victory over the University of Montana.

JoAnn Burrell led the BSU team to their 70-51 victory Friday night scoring a game high 19 points against the Montana State Bobcats and pulling down a game-high 13 rebounds. Freshman center Nancy Phillips came strong off the bench to put 12 points on the scoreboard for Boise while junior Kim Erikson reached for 7 rebounds. The Broncos shot 50% from the floor and at one time led MSU by 27 points.

From Friday's Bozeman game the Broncos moved on to Missoula where senior guard

Elaine Elliott shot an explosive 28 points against the University of Montana Grizzlies to help BSU to a 66-35 win. Phillips chipped in an additional 10 points and Burrell, Phillips, and Lawson led the Broncos in rebounds with 10, 8, and 8 rebounds respectively.

The Boise State man-to-man defense held the Grizzlies to a very low 35 total points as Montana's Deden attempted to lead her team to victory with 7 points.

The Broncos now look to Friday and Saturday's matchups against the University of Utah Utes. Friday's game will begin at 7 p.m. in the Boise High School gym and Saturday's game will be held in the BSU gym beginning at 3 p.m. There is no admission charge.

**Winterize Your Body at**  
**'Browseville'**  
**Guys & Gals**  
**Coats, Jackets, Parkas**



**Turn in your old clean blue jeans**  
**\$2 credit on a new pair**  
**One to a customer**

Down-filled Jackets \$24 <sup>88</sup> & up	SNOW SHOES.....\$25 <sup>95</sup> & up
Down-filled Vests.....\$17 <sup>88</sup> & up	NYLON FLIGHT PANTS Air force insulated.....\$19 <sup>88</sup>
Snorkel Parkas.....\$19 <sup>88</sup> & up	EMERGENCY SPACE BLANKETS. \$1 <sup>88</sup>
SLEEPING BAGS- Duck or Goose Down-filled, Rectangle & Dac. II, GI Mummy Bags.....\$29 <sup>88</sup>	13 BUTTON NAVY WOOL PANTS.....\$8 <sup>88</sup>
Warmup Suits.....\$16 <sup>88</sup> & up	100% WOOL ARMY PANTS.....\$8 <sup>88</sup>
Maverick & Rapper Prewash Denim Jeans.....\$14 <sup>88</sup>	NAVY STYLE SHIRTS, wool cpo \$8 <sup>88</sup>
Guys & Gals Seafarer Jeans & Cords.....\$8 <sup>88</sup> to \$9 <sup>88</sup>	DOWNFILLED SNOWMOBILE COVERALLS. reg. \$54.88 now \$49 <sup>88</sup>
	SNOWMOBILE BOOTS... \$8 <sup>88</sup> & up
OPEN 8:30 TO 5:30 MON.-SAT.	INSULATED HUNTING BOOTS..... \$21 <sup>88</sup> & up
"Have Fun Saving Money"	WHITE MUCKLUCKS, Leather bottoms, Canvas top.. \$9 <sup>88</sup> pr.
30th & FAIRVIEW, BOISE 344-3539	WOOL KNICKERS cross country ski pants.....\$5 <sup>88</sup>
Also in TWIN FALLS	WARM THERMAL UNDERWEAR AND SOX




# Broncos split on Big Sky trip

by Freddie Vincent

## Gonzaga

junior forward Danny Jones scored 11 points and senior forward Kevin Goetz added seven.

The Gonzaga Bulldogs led by senior center Reed Schifferman (20 points) could do no wrong in the game. They gained 8 turnovers in the first half along with well executed plays and precision shooting. The Bulldog defense would not allow BSU any floor position, causing them to turn over the ball in key situations.

The score had been tied five times by the end of the first half with Gonzaga leading the Broncos 34-33.

In the second period BSU was on the move displaying good offense and ball handling. They dominated the third quarter with no problems and kept pressure on Gonzaga well into the last half of the fourth period. Then the Broncos began to lose their cool, as they have so often in previous games.

They could not control the ball, their shots and easy lay-ups would not fall in the basket while the Bulldogs scored points on every play they made. With 4:39 remaining in the game, BSU tied the score 55-55 from a fifteen footer by Steve Connor. Connor put on his usual one-man show, but it was not

enough to win the game.

Again they turned over the ball too many times and Gonzaga took advantage of Boise State's mistakes to win 68-61.

Gonzaga has always played well against the Broncos and it seemed they would continue to do so.

## U of Idaho

There is an old saying: "If at first you don't succeed, try, try again." Boise State may have been thinking of that while handing the University of Idaho Vandals a 79-70 loss at the Kibbie Dome in Moscow Saturday night. After losing to Gonzaga the previous night, they were aware that they had to win their first Big Sky road game, and they did it in style.

The first half was unbelievable -- in fact, for most of the game both teams were red hot in executing plays and scoring. The Broncos matched the Vandals point for point on every play imaginable throughout the game, since they knew the win was a must.

Steve Connor shot 17 consec-

utive points in the first half to give BSU a 43-39 lead over the Vandals. But Idaho was moving the ball well also. Senior guard James Smith, an ex-Bronco player, almost singlehandedly controlled the Bronco defense with fourteen points. There was no doubt that the Vandals wanted this game as badly as BSU. Idaho, 1-8, is starting four freshmen and definitely in a rebuilding season.

The Vandals would not be denied the chance to score points, and they were aware of the fact that pressure and ball control would enable them to beat the Broncos. That chance did not come until 3:05 was left in the game. Boise State led 75-55, and it seemed they would finish the game with a large point spread. But the pattern is always the same: the Broncos underestimate their opponents and either lose or win by a small margin. The Vandals rallied back with 13 consecutive points to come within 7 points of BSU.

If there had been more time for the Vandals, they might have won, as the Broncos were simply going through the motions of playing basketball in the last few minutes. Nevertheless, they held Idaho to win their first road game.

Steve Connor led all scorers

with 29 points, followed by Broncos Wally Foster and Kevin Goetz with 13 points each. Smith was the high point man for the Vandals with 24. Boise's Danny Jones and Sean McKenna led all rebounders with 8 and 7 boards, respectively.

Boise State's next game is in Pocatello against the Idaho State Bengals. The Bengals are 2-0 in Big Sky play, having beaten both Idaho and Gonzaga, and are also arch-rivals of the Broncos. Idaho State has an excellent team this year and the Broncos will be in trouble unless they can motivate themselves and play well in key situations.

**the ARBITER  
needs a  
proofreader.**

**Apply at the  
ARBITER office,  
2nd floor SUB.**

Art Supplies  
Xerox Copies  
Photo Service  
Class Rings  
Key Making  
Stationary  
Sundries  
Check Cashing  
Service

Your




**bsu**

**Campus Store**

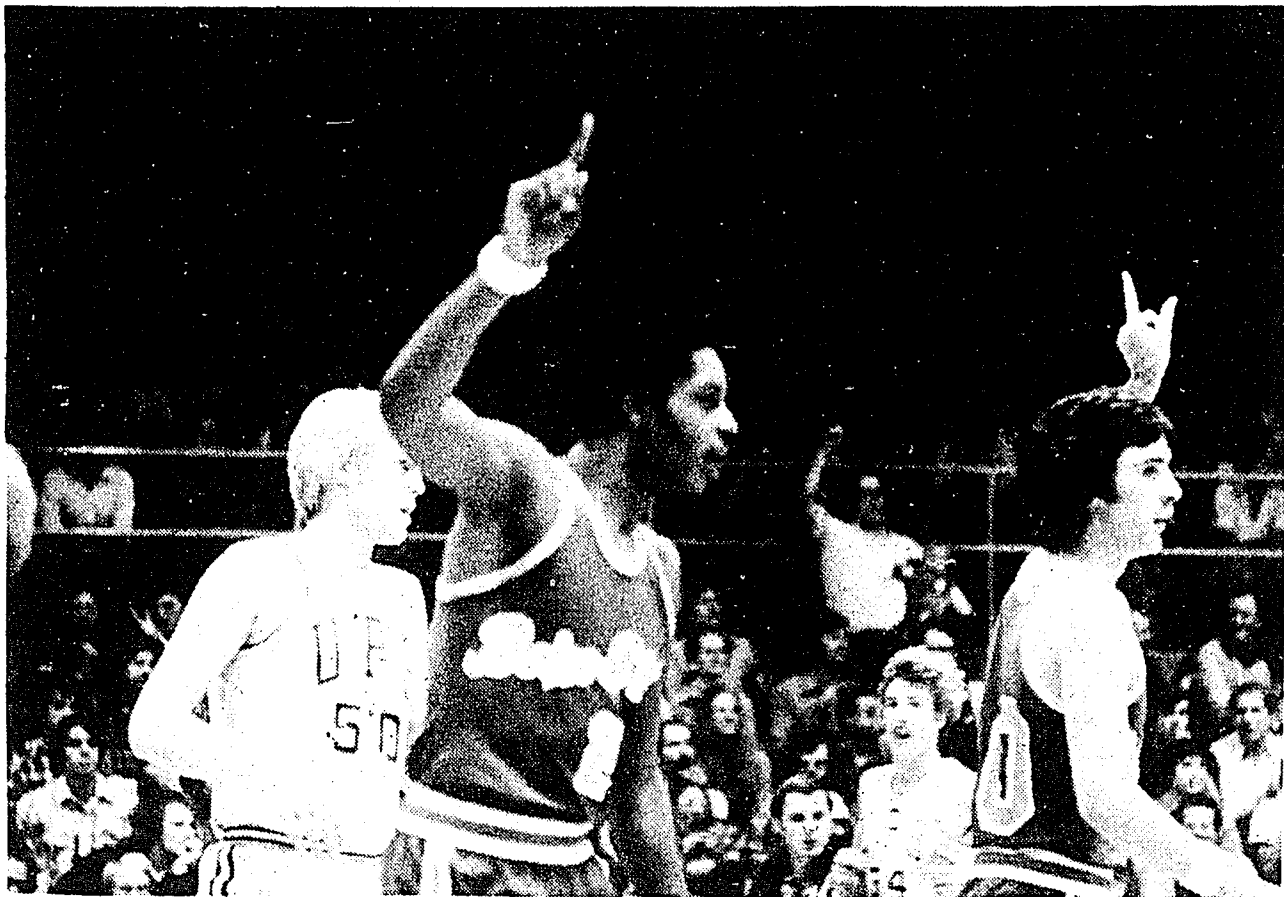
Located in Student Union Building

Paperback  
Department  
Campus  
Clothing  
Engineering  
Supplies  
Plastic  
Laminating  
Greeting  
Cards

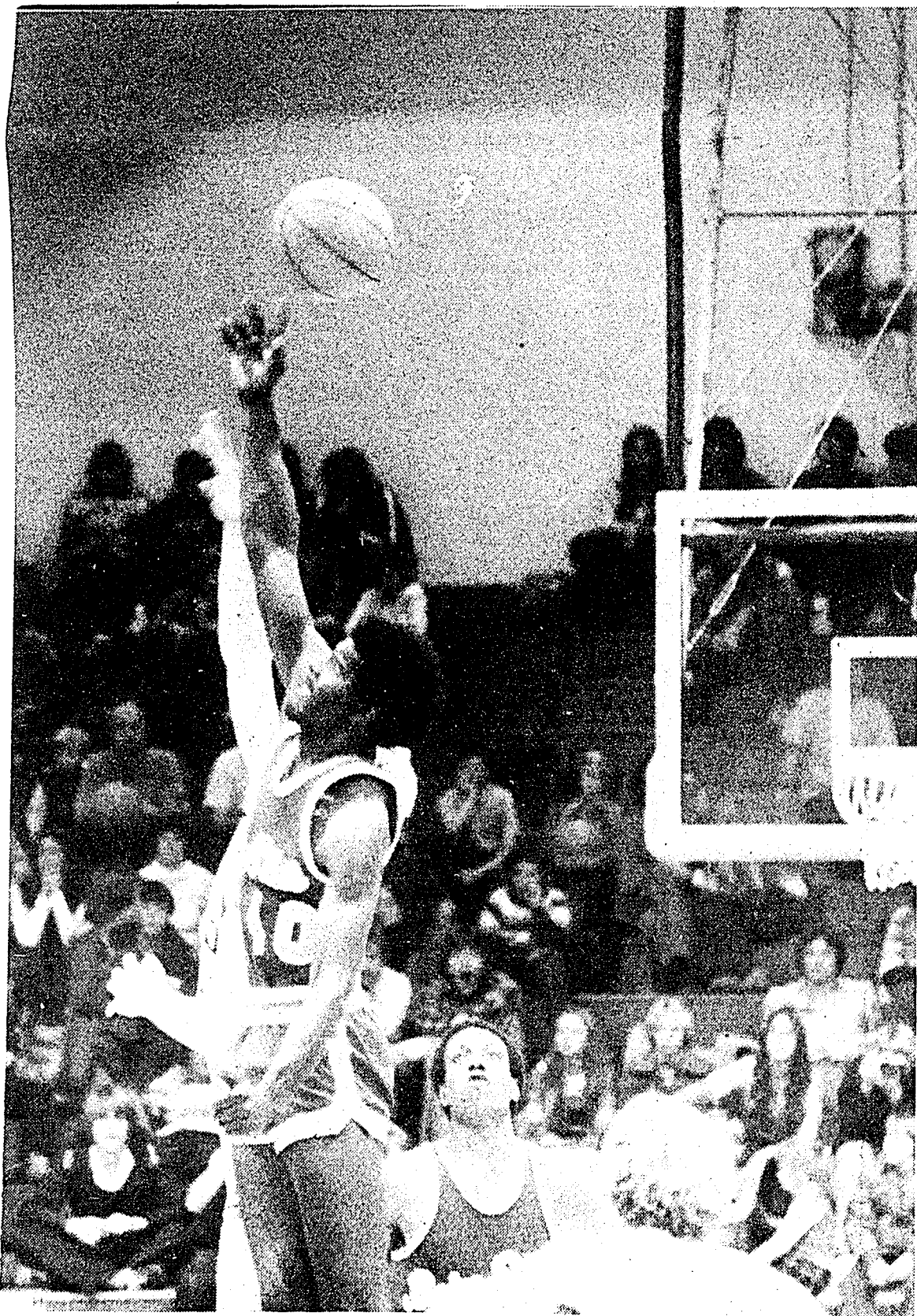
Special Order Any Book    Used Book Buyback During Finals  
School & Office Supplies    Rubber Stamps  
Cap & Gown Rentals    Gift & Jewelry Items  
Magazine Subscriptions (50% Student Discounts)  
Candy, Cigarettes, & Snacks    And of Course, Your Textbooks

**CHECK MESSENGER SERVICE FOR STORE HRS DURING REGISTRATION & FIRST SCHOOL WEEK**

# Broncos win Holiday Classic



Trent Johnson and Steve Connor signal their teammates to set up the 1-3-1 zone against Puget Sound in the Holiday Classic title contest.



Danny Jones skies for the opening tip-off as John Mayfield looks on in the final round of the Boise State Holiday Classic.

by Benjamin Tucker

The 1976 Boise State Holiday Classic was a resounding success, in more ways than one. The tourney pulled in 3,015 and 3,115 people on successive nights. Boise State won the classic with 76-55 and 76-74 victories over Cal-Irvine and Puget Sound, respectively. Kevin Goetz and Steve Connor made the all-tournament team. And Steve Connor was named classic most valuable player.

In the opening contest, Puget Sound edged California State-Sacramento 68-65. The Loggers, behind 36-23 at the half, never lost their composure, and outscored the Hornets 37-24 in the second half to tie the game at 60 a piece, and then outplayed Sacramento 8-5 in the overtime period to claim a spot in the championship contest. Tim Evans, 6-6 junior guard, led UPS with 22 points, while Mike Rudder led Cal-State with 20 points.

The nightcap of the opening round saw Boise State beat Cal-Irvine 76-55. Leading 36-25 at the half, the Broncos outscored the Anteaters 40-30 in the second period to claim the win. Coach Bus Connor cleared the bench in the second period and thirteen Broncos scored. Steve Connor led BSU in scoring with 17 points and handed off 6 assists. Danny Jones pumped in 10 points and led Bronco rebounders with 8. Only Mike Rodgers scored in double figures for UCI, hitting 5 of 9 from the field for 10 points. The Broncos hit on 25 of 52 field goals (48%), 26 of 38 free throws (68%), and pulled down 44 rebounds. Cal-Irvine hit 19 of 63 from the field (32%), 17 of 24 from the line (78%), and grabbed 31 boards.

The Thursday night contests found first round losers Sacramento State and Irvine facing each other for third place and first round winners BSU and UPS facing off for the championship.

Sacramento State, which was a horrendous 1-11 before the game, including a 77-67 loss to the U of I Vandals, smashed Irvine 82-59. Nate Robinson

and Mike Rudder led the Hornet onslaught with 21 and 15 points respectively. Louis Stephens led the Anteaters with 10 points.

The Hornets hit 33 of 66 field goals (50%) while Irvine only managed a 28 for 68 (41%) effort. The Hornets lengthened their lead with a 16-22 free throw performance, while the Anteaters hit three of only four shots from the line.

The nightcap proved sweet revenge for the Broncos, as they had lost to UPS 89-76 in Seattle during late November. The Broncos sprinted to a 46-37 halftime advantage on the strength of SuperSub Kevin Goetz's 14 points and 6 rebounds. Goetz entered the game with fourteen minutes left in the half, and sparked the BSU squad to their halftime lead.

The second stanza saw UPS rebound from a 63-50 deficit to close the contest to 68-66 with two minutes remaining. Free throws by Trent Johnson and Steve Connor upped the lead to 72-66 with 1:37 left. With 59 seconds left in the game, UPS closed the score to 72-70. Danny Jones then broke free from the Logger full-court press and caught a Steve Connor pass which resulted in an easy lay-in.

Seconds later Wally Foster added two free throws to stretch the lead to 76-70. Two uncontested layups by the Loggers in the last seconds only narrowed the final score.

The Broncos hit on 27 of 47 shots from the field (57%), 22 of 29 shots from the line (76%), and pulled down 33 rebounds. The Loggers hit 34 of 68 field goals (50%), 6 of 9 free throws (67%) and grabbed 22 boards. Steve Connor led the Bronco attack with 22 points and 10 assists, followed by Kevin Goetz with 17 points and 7 rebounds, with Danny Jones contributing 11 points and Wally Foster adding 10 points and 9 assists. Rick Walker led the Loggers with 22 points and Tim Evans added 18.

The All-Tournament team, selected by the tourney team coaches, featured Steve Connor and Kevin Goetz of BSU, Rick Walker and Tim Evans of UPS,



Bronco junior guard Steve Connor receives the Holiday Classic Most Valuable Player award as youngsters look on.

and Sacramento State's Nate Robinson. Stats for the All-Tourney team were:

	FG	FT	R	A	TP
Connor	15-28	9-13	4	16	39
Goetz	7-14	10-12	10	8	24
Walker	14-30	2-3	20	3	30
Evans	18-42	4-4	9	3	40
Robinson	13-23	5-9	22	6	31

UPS	FG	FT	R	TP
McCully	1-4	2-2	0	4
Wells	4-4	0-0	1	8
Botts	5-11	1-2	0	11
Evans	9-19	0-0	4	18
Freimuth	3-5	0-0	4	6
Lange	0-1	0-0	0	0
Hiam	2-5	1-2	2	5
Walker	10-19	2-3	10	22
<b>Total</b>	<b>34-68</b>	<b>6-9</b>	<b>22</b>	<b>74</b>

Steve Connor was named the tourney MVP on the strength of his impressive performance shooting and ball-handling.

Total Fouls: UPS 25, BSU 14.

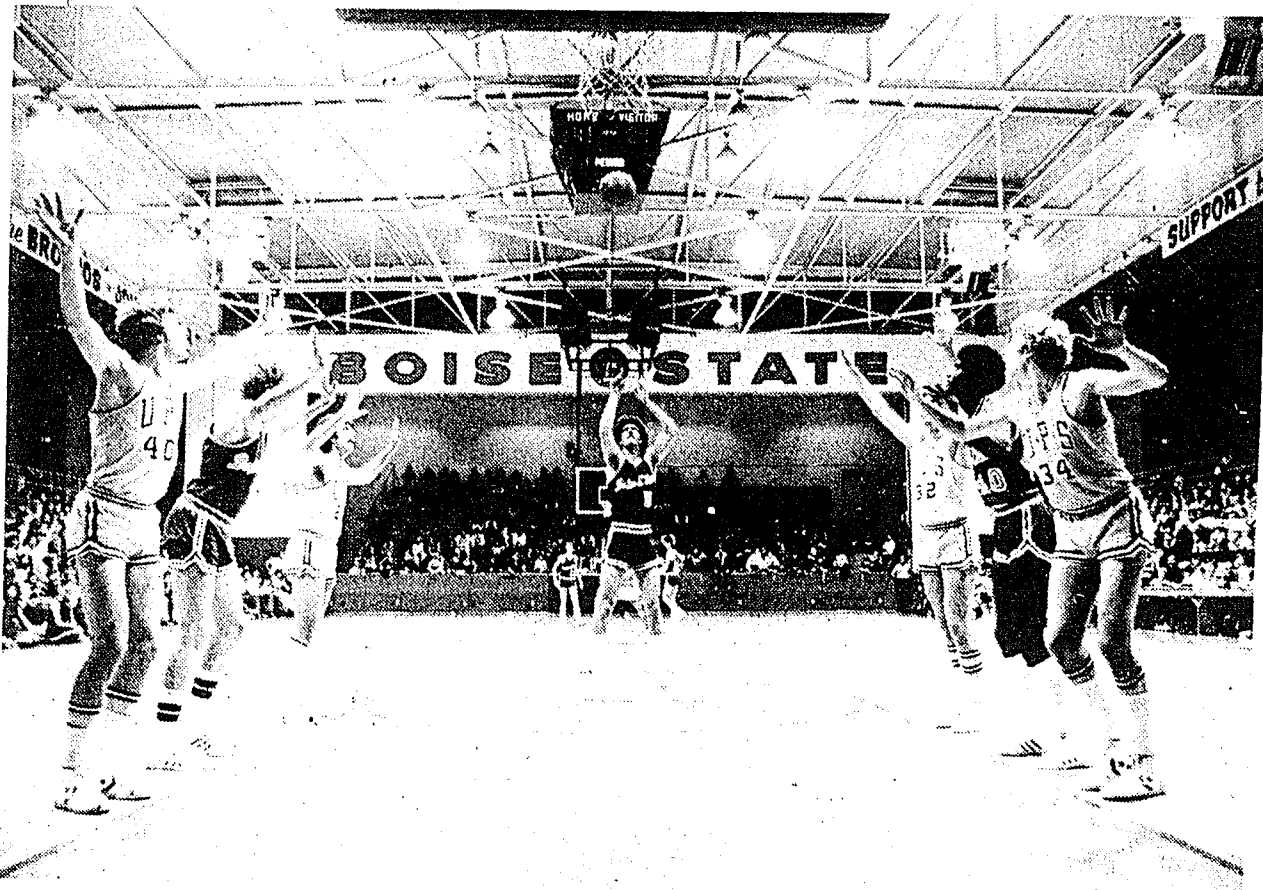
Fouled Out: UPS- Botts, Hiam.

TITLE GAME STATISTICS

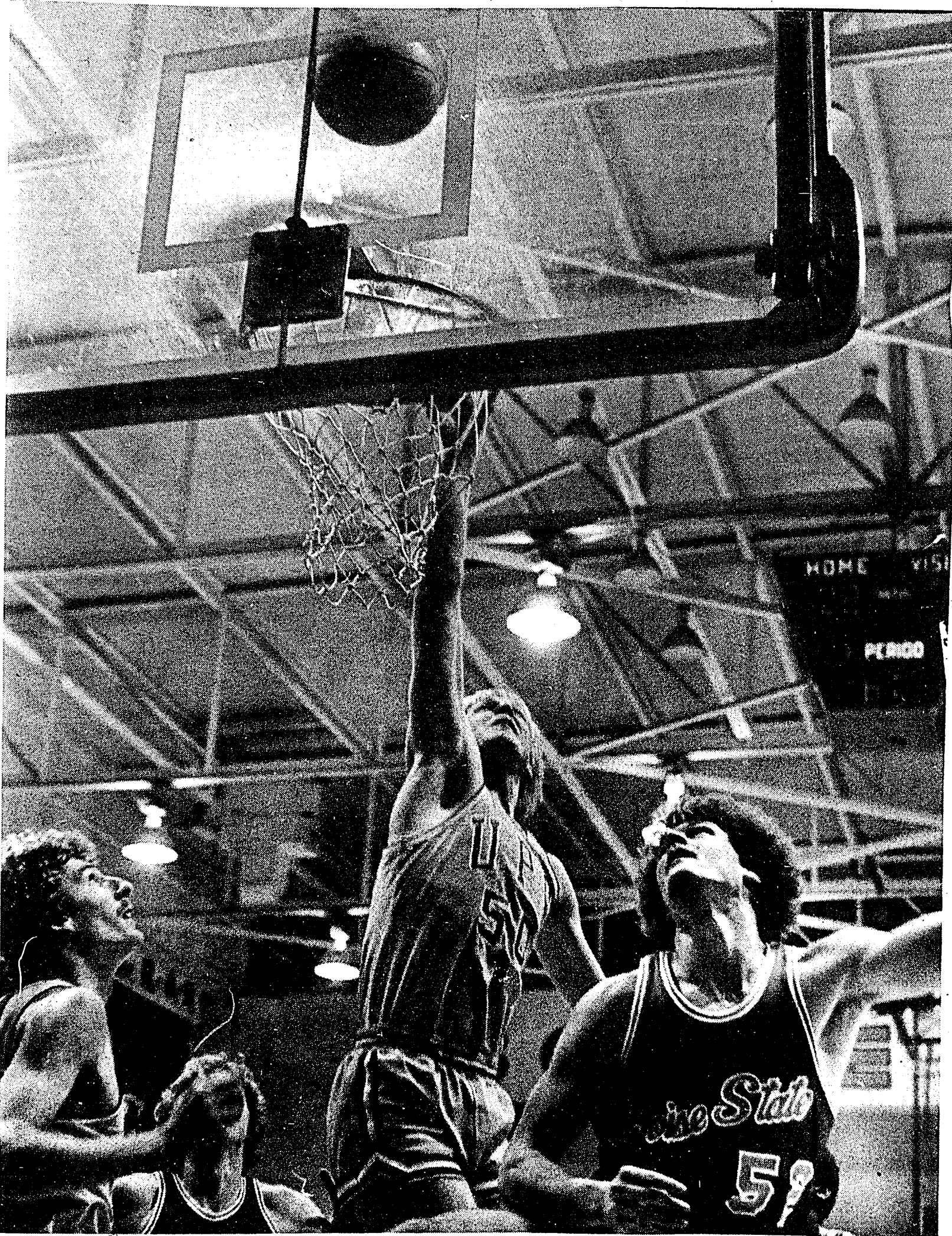
BSU	FG	FT	R	TP
Connor	9-16	4-7	3	22
Foster	4-7	2-2	3	10
Johnson	2-6	4-4	5	8
Jones	5-5	1-3	4	11
Mayfield	1-1	0-0	5	2
McKenna	2-4	2-3	6	6
Goetz	4-8	9-10	7	17
<b>Total</b>	<b>27-47</b>	<b>22-29</b>	<b>33</b>	<b>76</b>

Assists: UPS- Wells 5, Botts 5, Evans 2, Freimuth 2, Walker 3.

BSU- Connor 10, Foster 9, Johnson 1, Mayfield 2, Goetz 4.



Super-sub Kevin Goetz pumps in one of his seventeen points against UPS in the Holiday championship game.



All-tourney forwards Kevin Goetz and Rick Walker position for a rebound attempt as UPS' Bill Hiam reaches for a tip-in.

Photos by Marty Most and Tom McKercher

# Tucker picks ISU over BSU

by Benjamin Tucker

The 1977 half of the collegiate basketball season begins with San Francisco and Cincinnati riding atop the AP Division I poll. The Dons have registered seventeen consecutive wins going into this week's action, while the Bearcats have rolled over ten straight opponents.

Following USF and Cincinnati in the January 5 AP poll were Kentucky (now 8-1), Alabama (11-0), Michigan (9-1), North Carolina (10-1), UCLA (11-2), Notre Dame (8-1), Nevada-Las Vegas (13-1), and Wake Forest (11-1).

The three top games over the next week will feature North Carolina at Wake Forest on January 13, Notre Dame at #12 Marquette on January 16, and Cincinnati at #14 Louisville on January 19. In this scribe's view, the Tar Heels should prevail over the Demon Deacons at Winston-Salem on the basis of experience. NC returns four starters from last year's team, three of whom have Olympic play to their credit. On the other hand, Wake Forest has only recently jelled into a strong unit, and that should spell the difference. The Irish-Warrior

clash will take place before a national television audience next Sunday, and although Coach Al McGuire's charges have played inconsistently to date, they should be ready to defeat upstart Notre Dame. The big upset of the week will occur at Louisville, where the Fighting Cardinals will hand the Bearcats their first loss of the year.

In Big Sky action, the Boise State-Idaho State game in Pocatello on January 14 will be the important match-up of the week. The Bengals will enter the game 9-4 on the year, while the Broncos will be 6-7.

All-American candidate at center Steve Hayes is averaging 20 points per game and 11 rebounds per game. Hayes is receiving ample help on the front line from Greg Griffin and Steve Cook, while Ed Thompson is the second leading Bengal scorer, averaging 15 points per contest. The Broncos are led by junior guard Steve Connor and sixth-man Kevin Goetz. At this point in the season, ISU seems to be a more cohesive unit, as they have managed to abstain from the turnover problem which has plagued the BSU team all year. The homecourt Minidome should also add to the Bengal advantage.

#### National Picks

January 12  
Dayton at Cincinnati (+12)  
Tennessee at Kentucky (+8)  
January 13  
North Carolina (+3) at Wake Forest  
UCLA (+20) at California  
January 14  
Pepperdine at USF (+14)  
January 15  
Loyola-Marymount at USF (+8)  
Kentucky (+13) at Auburn  
Alabama (+11) at Mississippi State  
Michigan (+9) at Michigan State  
Duke at North Carolina (+9)  
UCLA (+11) at Stanford  
Wake Forest (+4) at Clemson  
January 16  
Cincinnati (+10) at St. Louis  
Notre Dame at Marquette (+2) UPSET SPECIAL  
January 17  
Kentucky (+17) at Florida  
Michigan (+10) at Iowa

January 18  
Notre Dame (+20) at Stonehill  
January 19  
Cincinnati at Louisville (+1)  
UPSET SPECIAL  
Big Sky picks  
January 14  
Boise State at Idaho State (+9)  
Gonzaga (+5) at Idaho

## Women's pro tennis tourney in Boise

by Julie Howard

Twenty-four professional women tennis players including Jeanne Evert will flock to Boise Jan. 17-23 for the second stop of the annual \$20,000 Avon Tour.

More than sixty women are currently in Hailey, Idaho, attempting to qualify for the Boise Tournament which will be locally sponsored by the Youth Tennis Foundation. Only eight will join the 24 touring pros for next week's tournament.

It is not known definitely who the 8 seeded players will be at the Boise tournament, but a probable list seats Cynthia Doerner, first, Val Ziegenfuss, second, Brigitte Cuyper, third, and Mary Struthers, fourth. Cuyper recently won the South African Open.

The Boise tournament, beginning Jan. 17, with the finals scheduled for Jan. 23, will qualify the top four players for the Virginia Slims Tournament the following week in Minneapolis. The Virginia Slims tour includes the best women tennis players in the world while the Avon tour involves players just below that level.

The winner in Boise will receive \$2,800 and second place will pay \$1,400. The rest of the \$20,000 prize will go to top finishers in singles and doubles competitions.

Matches for the Boise Tournament will be held on the indoor courts at the Boise Racquet and Swim Club. Tickets will cost \$2.50 for each of the first four sessions. \$1 for the final weekend and \$10 for a tournament pass. Tickets may be purchased in advance or at the door.

Boise State Tennis coach Jean Boyles commented favorably on the first time Boise Tournament:

"It's a chance to see the top women tennis players of the world in person," she said. "It's different and extra special to be able to see them for yourself."

Boyles also added that it's a chance for tennis fans to learn a lot; pick up a stroke or maybe a new strategy, and interested fans will have a chance to meet two of the women pros on Wednesday, Jan. 19, from 11:30 - 1:30 during a special talk session in the BSU gym. The session is open to all students, men and women, news media, athletes, trainers, or anyone who would like to speak to these women.

## CLEARANCE SALE NOW IN PROGRESS

Save...famous brand suits, sportcoats, slacks, shoes and more. All from regular stock.

USE YOUR ALEXANDER'S OR BANK CARD ...OR LAYAWAY

# ALEXANDER'S fits your change

Campus Shop • 1002 Vista Ave. • Phone 343-5291

AN IMPORTANT ANNOUNCEMENT TO ALL PHOTOGRAPHY STUDENTS

# Ballou Latimer

Downtown 828 Idaho Street 343-8541 Westgate Mall 7830 Fairview Ave. 376-7312

SERVING THE AMATEUR AND PROFESSIONAL PHOTOGRAPHER  
FEATURING COMPLETE QUALITY PHOTOGRAPHIC PRODUCTS - AT A SAVINGS - SINCE 1910

- URGES YOU TO COMPARE PRICES BEFORE YOU BUY ANYTHING
- INVITES YOU TO STOP IN AT EITHER LOCATION - BALLOU-LATIMER CAMERA SHOP DOWNTOWN AT NINTH AND IDAHO STREET OR IN THE WESTGATE MALL AT 7830 FAIRVIEW AVENUE - AND REGISTER WITH US AS A PHOTOGRAPHY STUDENT
- OFFERS YOU A TRUE 20% DISCOUNT ON YOUR INITIAL PURCHASE OF DARKROOM SUPPLIES REQUIRED FOR YOUR PHOTOGRAPHY CLASS
- GUARANTEES YOU A TRUE 15% STUDENT DISCOUNT ON ALL SUBSEQUENT PURCHASES OF DARKROOM SUPPLIES REQUIRED FOR YOUR PHOTOGRAPHY CLASS
- MAINTAINS A LARGE STOCK OF NEW AND USED CAMERAS, LENSES, AND ACCESSORIES
- FEATURES NIKON, CANON, OLYMPUS, PENTAX, ROLLEI, VIVITAR, BESELER, OMEGA, DURST, BUSHNELL, SANKYO, ILFORD, LUMINOS, CIBACHROME, AGNECOLOR, AND EASTMAN KODAK
- HAS KNOWLEDGABLE, HONEST, FAIR, AND INTERESTED PEOPLE WHO ARE PROFESSIONALS WILLING TO SPEND THE TIME TO WORK WITH YOU
- WANTS TO KNOW YOU AND WANTS TO DO BUSINESS WITH YOU



QUALITY CAMERAS AND SOUND

The store with the extra touch!



# ALL-OUT SKI CLEARANCE EVERYTHING GOES!

Save **20%** to **40%**

**HEAD**  
 sarner ski  
**ROSSIGNOL**  
**FISCHER**  
**KNEISSL**  
*Raidle*  
**LANGE**  
**ATOMIC**  
**DYNAMIC**  
*Daleboot*  
*Fullplast*

**OUR ENTIRE STOCK OF FAMOUS BRAND**  
 ★ **BOOTS** ★ **BINDINGS** ★ **POLES**  
 ★ **PARKAS** ★ **SKI SUITS** ★ **SKI PANTS**  
 ★ **AFTER SKI BOOTS** ★ **SKI RACKS** ★ **SKIS**  
 ★ **CROSS COUNTRY SKIS-BOOTS-BINDINGS**

<p><b>KNEISSL</b>                  THE "GTX" COMPACT SKI                  69<sup>99</sup>                  A glass laminate ski with molded duroplast core system.                  Our Reg. 135.00</p>	<p><b>FISCHER</b>                  THE "QUICK GLASS" SKI                  19<sup>99</sup>                  ABS top surface &amp; side cheeks, P-Tex running base.                  Our Reg. 60.00</p>	<p><b>LANGE</b>                  THE "MS." SHORT-WIDE SKI                  68<sup>88</sup>                  The short-wide ski for women. In 170 cm. length.                  Our Reg. 140.00</p>	<p><b>FISCHER</b>                  THE "JET JR." SKI                  34<sup>99</sup> TO 39<sup>99</sup>                  120-140 cm. lengths                  Our Reg. 60.00                  150-170 cm. lengths                  Our Reg. 70.00                  A foam core constructed ski.</p>
<p><b>LANGE</b>                  THE "BANSHEE" SKI BOOT 1975 MODELS                  88<sup>99</sup>                  The high back boot with the Lange-Flo II liner.                  Our Reg. 190.00</p>	<p><b>GARMONT <i>Raidle</i></b>                  MEN'S &amp; LADIES' SKI BOOTS                  79<sup>50</sup>                  Four-buckle boots with flo lining.                  Our Reg. To 140.00</p>	<p><b>AFTER SKI MOON BOOTS</b>                  19<sup>99</sup>                  Italian-made foam boots with vinyl uppers and wrap-around sole.                  Our Reg. 24.95</p>	<p><b>MONI TREMBLANT</b>                  MEN'S &amp; LADIES' SKI SUITS                  49<sup>99</sup>                  Two-piece ski suits in the latest color combos.                  Our Reg. 89.95</p>

<p><b>TOPHER</b>                  MEN'S &amp; LADIES' SKI SWEATERS 1975 MODELS                  19<sup>99</sup>                  100% wool in super color combinations.                  Made To Sell for 38.95</p>	<p><b>CROSS COUNTRY SKI VALUES!</b>                  SILVA CROSS-COUNTRY SKIS                  25<sup>99</sup>                  22 laminations of fine ash and spruce with a hickory base.                  Our Reg. 50.00</p>	<p><b>CROSS COUNTRY SKI BINDINGS</b>                  366                  Pinso ski bindings with unbreakable plastic-base toe.                  Our Reg. 8.00</p>	<p><b>LEATHER SKI MITTENS</b>                  5<sup>99</sup>                  Leather ski gloves for the slopes. Fully lined &amp; warm.                  Our Reg. 7.95</p>
<p><b>HI-LEGAL</b>                  MEN'S &amp; LADIES' TURTLENECKS                  7<sup>99</sup>                  50% polyester 50% cotton to wear alone or under one of our great ski sweaters.                  Our Reg. 10.00</p>	<p><b>CROSS COUNTRY SKI POLES</b>                  477                  The famous Tonkin Cane ski pole with adjustable hand straps.                  Our Reg. 9.95</p>	<p><b>DOWN FILLED SKI MITTENS</b>                  7<sup>99</sup>                  Down filled leather and nylon with knit inner cuffs.                  Our Reg. 11.95</p>	



IN BOISE CORNER FAIRVIEW & CURTIS  
 IN NAMPA 1031 NAMPA CALDWELL BLVD.

WEEKDAYS 9:30 to 9 SUNDAYS 10 to 6



# That friendly feeling far from home.

The most important thing in your life right now, is probably not your bank.

And that's as it should be.

You aren't here to worry about your bank. But your bank should be here to worry about you.

And we are.

That's the First Security feeling. Confidence, security, trust. If you're from any one of over 100 Intermountain cities, you may have grown up with that feeling. And you have every right to expect it here.

Even if First Security was not your bank at home, we want to be your bank here.

Come in.

## **First Security Bank**

MEMBER FDIC

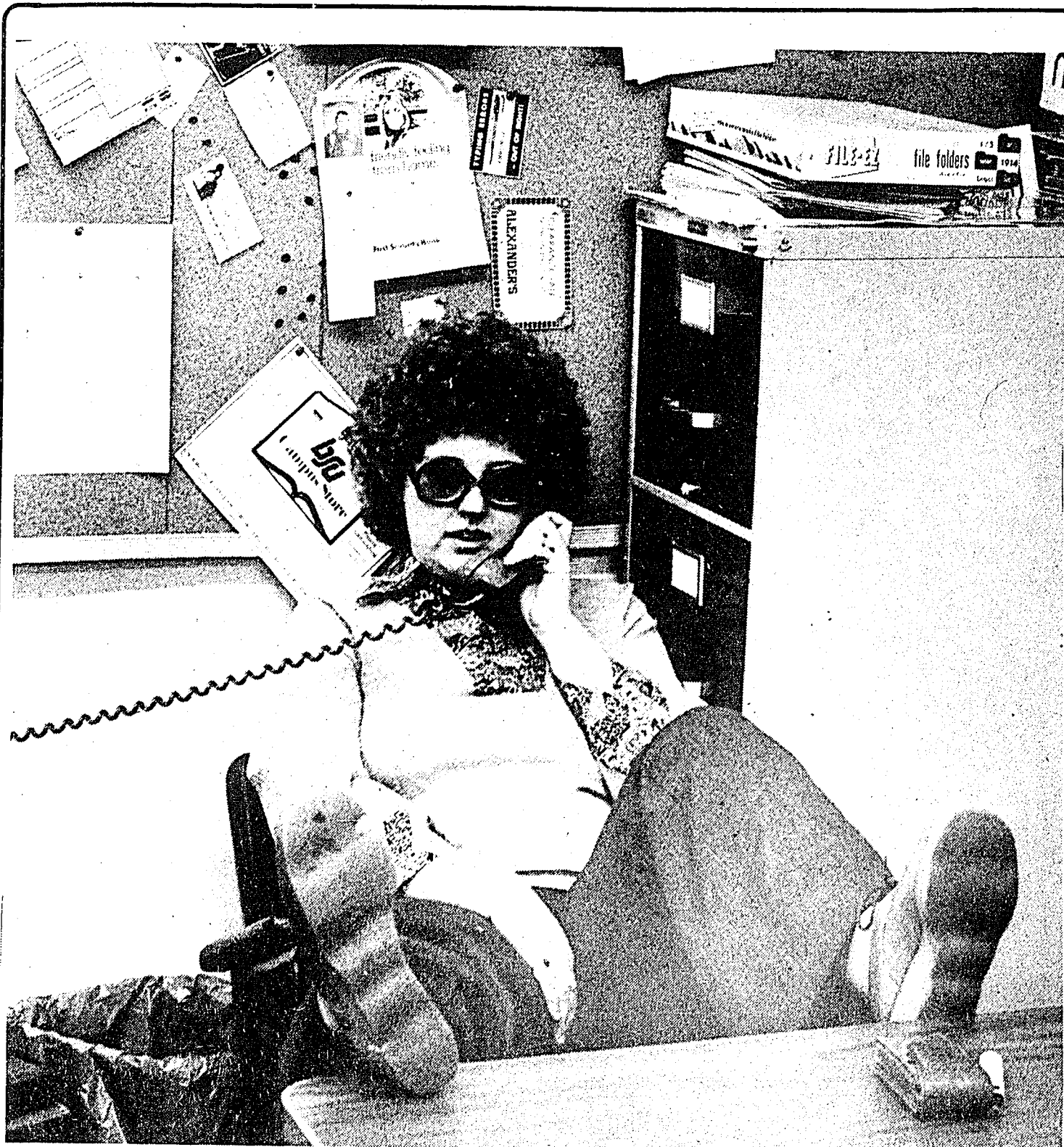


# Student Worker

BOISE STATE UNIVERSITY

Issue 17 / January 12, 1977

STUDENT NEWSPAPER



by John Steppe