

3-8-1976

## Arbiter, March 8

Associated Students of Boise State University

---

Although this file was scanned from the highest-quality microfilm held by Boise State University, it reveals the limitations of the source microfilm. It is possible to perform a text search of much of this material; however, there are sections where the source microfilm was too faint or unreadable to allow for text scanning. For assistance with this collection of student newspapers, please contact Special Collections and Archives at [archives@boisestate.edu](mailto:archives@boisestate.edu).

## Phase II OK'd by Joint Finance Committee

The Joint Finance-Appropriations Committee last week recommended full funding for Phase II of BSU's Science Education Building by a vote of 15-4. The complex has been partially funded since 1970, according to Dr. John Barnes, BSU President.

The funding, which must still be approved by the Legislature, will come from two different sources. \$1,809,700 will come from the Permanent Building Fund; \$1,540,300 will come from the general fund surplus. The total cost for Phase II is \$3,350,000.

Phase II will be a six or seven story addition to Phase I, with roughly 70,000 square feet. Barnes stressed that this addition is separate from the three story Phase I building; it will not be built on top of the Phase I facility which is already under construction, but at the side of it.

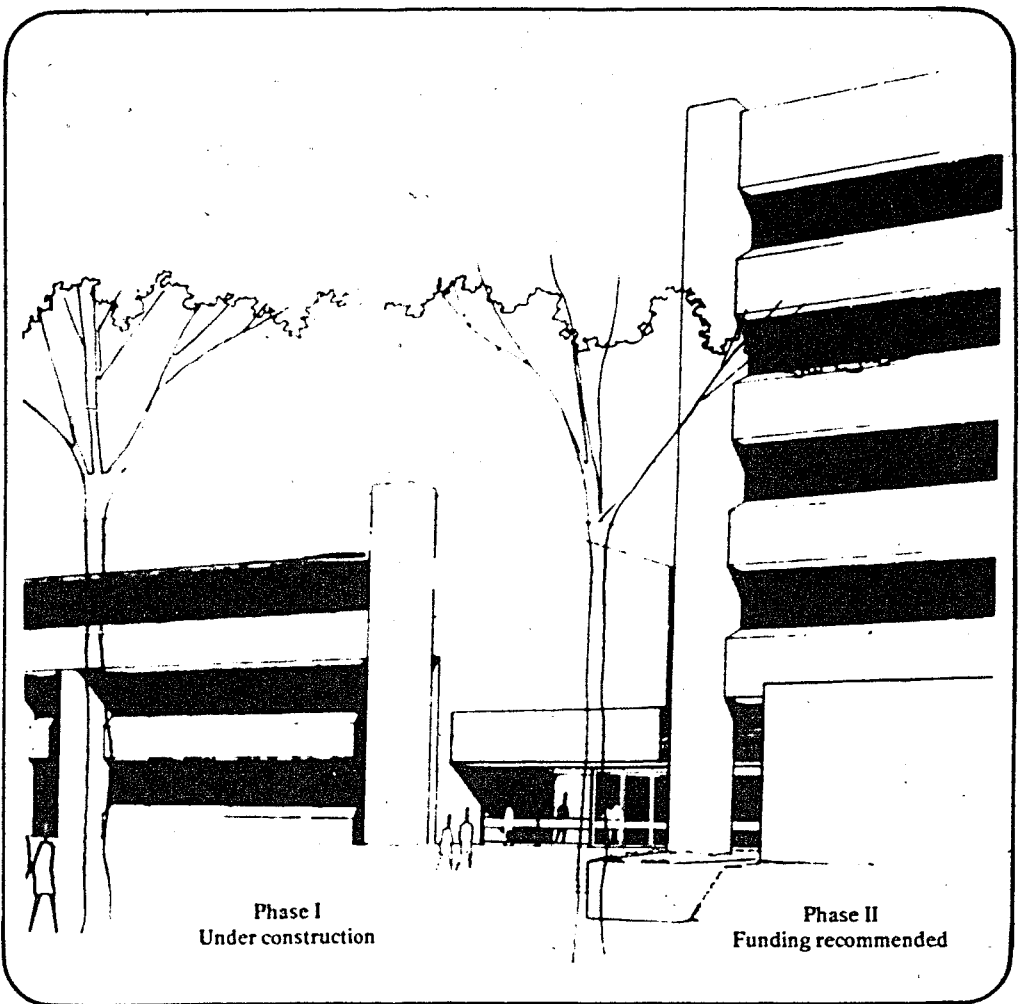
The new addition will provide classrooms for the education, history and other departments, according to Dr. David Taylor, Vice-president of Student Affairs. The building should provide a variety of sizes of classrooms, labs, office space

and some special purpose rooms, Taylor said. The special purpose rooms would include space for micro-teaching, video taping, a psychology lab, reading education lab, special education and childhood labs.

"I was tremendously pleased to see the State Board, the Governor's office, and the Joint Committee recognize that this was a high priority," Barnes said. "Whenever you get those groups agreeing on need, you usually get funded. I think this united support got us funded, and ordinarily the legislature follows the recommendation of the Joint Committee."

Once the legislature has approved the funding, an architect will be selected and detailed plans will begin. When the plans are completed they will be released for bids by contractors.

An approximate time table for construction is an architect being selected by early spring, bids accepted in early summer, and construction work beginning in late summer or early fall. If construction goes well, the building could be ready for use by the spring of 1978.



ARBITER / March 8, 1976

# up front

## Arbiter sports editor does it again

by John Steppe

I did it. I broke a solemn vow never to return to Ogden, Utah. Not since football season have I visited that accursed mini-metropolis.

The trip was doomed from the very beginning. Photo Bureau chief Tom McKercher and I were waiting in line at the Boise airport for tickets to fly down for the Big Sky Basketball tournament, when a police woman walked up to us and decided that we looked like the two bank robbers who knocked over a bank in Eagle that afternoon.

After mild mental harassment by her and later by her and another policeman, we were off to Salt Lake.

Our plane landed and we went to pick up our rented car.

Well, Hertz decided that we didn't need a car and that we should go someplace else if we wanted to rent one. After

bouncing from one car rental agency to another, we finally got one (only after placing a \$100 deposit down on it.)

Everything was now cool we had a car and were ready to make the drive to Ogden. Like most people in a different city, we asked for directions. The girl at the counter who rented us the car told us how to get to Ogden, and following her instructions, we set out. It was

not until some time later that we discovered that she gave us directions to Reno and we were half way there.

Finding the error of our ways, we turned around and went to Ogden. Arriving in that fair city we found it to be the same way that I left it during football season. That's right, it was asleep and to the best of my recollection it didn't open the entire time that we were there.

## Student recognition dinner slated March 23

The second annual Student Recognition Dinner will be held on Tuesday, March 23, 1976 at 6:30 p.m. in the Student Union Ballroom. The dinner, designed and planned to be an annual event, is to express thanks and appreciation to the many stu-

dents who provide leadership and service to the University over the year. Invited guests include ASBSU Student Leaders, Student Union Program Board Leaders, faculty and administrative representatives and past Presidents and Vice-Presidents of the ASBSU.

Featured Speaker for the evening will be former Senator Len B. Jordan who will share with the students and with other invited guests his thoughts and experiences regarding government or community citizenship and involvement. In addition to remarks from former Senator Jordan, there will be a presentation of the President's Award (for outstanding service to Boise State University); the ASBSU Award (for outstanding service for and in behalf of students at BSU); and the Director's Award (for outstanding service for the betterment of student activities and programs at Boise State University).

## National Lampoon cancels Boise State

The NATIONAL LAMPOON SHOW which was scheduled for March 8 by the Student Union Programs Board Lectures Committee has been cancelled by the touring company's agency. According to Randy Birkinbine, SUPB Lectures Chairperson, the agency contacted him on March 1 to notify that the show had been cancelled by the performers.

"Not only have they cancelled the Boise State University production, but they have cancelled their entire western states tour," stated Birkinbine. "I feel that they cancelled because of fatigue more than anything else. They have presented 100 shows in the last seven months."

Birkinbine continued by saying that he was sorry about the group's health; however, that does not help the BSU Lectures series. "We are looking into the possibilities of

sueing the agency or the artists for production costs and expected revenues," Birkinbine concluded.

According to the Lectures chairperson other shows being reviewed to fill the space by the NATIONAL LAMPOON SHOW are Edmunds and Curley (a comedy team); Germaine Greer (author) and Harrison and Tyler (another comedy team). Birkinbine has asked that the students with suggestions for upcoming lectures contact him at the Student Union Programs office on the second floor of the Student Union Building during regular business hours, or to call the SUPB at 385-1223 or 385-1224.

The entire SUPB extends its regrets to the students of the university for this occurrence and wishes to stress that this cancellation was due to the artists not to the Student Union Programs Board.

## Tenant/landlord bill receives recommendation

The much debated landlord-tenant bill, which would provide a uniform code for tenants and landlords, was sent to the House floor with a do-pass recommendation last week.

The House Judiciary and Rules Committee voted 6-4 to send out the bill, making it the third year such a bill has hit the floor. A similar bill last year passed the Senate but failed in

the House.

The bill defines terms and conditions of rental agreements, resident and owner obligations, settlement of disputes, landlord access to dwelling, and spells out the procedure for handling security deposits. Condominiums, public and private institutions, hotels, motels and other operations serving transient residents are excluded from the bill.

## inside...

"The helmet hassle" .....	Page 2
Uncle Ernie .....	Page 3
Career corner .....	Page 5
ASBSU Profile .....	Page 6
Headhunter .....	Page 10
Sports .....	Pages 13, 14, 15

# opinion

## editorial

### NO right to opinion

As most people already know, the Ada County Commissioners voted "no" on giving the residents of Ada County a chance to voice their opinion on the construction of the Pioneer Plant, even though over 4000 persons signed a petition stating they wanted that chance. Leave us hope none of the Commissioners has to rely on any of those 4000 people to get re-elected because it's doubtful the Commissioners would get the time of day from any of them.

It's hard to believe that a group of officials, supposedly there to represent the will of the people, refuse to hear them. When the Morrison Performing Arts Center was being considered, there was a vote for that, yet with Pioneer, a facility which could pollute the air, costs much more than the Center, and would (by Idaho Power's own admission) raise utility prices, there is no vote. It's make you wonder how much respect the Commissioners have for the people of this area. Judging by their actions, not very much.

The Commissioners seemed to feel that no citizen was well enough informed to make an intelligent decision on the controversy. However, with all the information, both pro and con, available about the plant, one would have had to have lived on the top of a mountain in outer Mongolia not to know something about it, even if it is just the amount of money to be spent.

Perhaps one way to settle the problem is to have a bond election. Usually in cases where there is a large amount of money involved, this is done. There's no apparent reason why it could not be done in this case. The way to bring it about is to simply put public pressure on officials. Most of them realize it is the public that puts them in office and that it is the public that can put them out of office. Begin exercising that power--let's let our representatives know how we feel now, before it's too late.

B.B.

## Arbiter

BOISE STATE UNIVERSITY STUDENT NEWSPAPER

- EDITOR-IN-CHIEF:** Barb Bridwell
- ASSOCIATE EDITOR:** Helen Christensen
- NEWS EDITOR:** Dave Outsen
- SPORTS EDITOR:** John Steppe
- LAYOUT EDITOR:** Chris Hayne
- ASSISTANTS:** Jim O'Malley, Curt Frazier
- REPORTERS:** George Neils, Rob Lundgren
- COLUMNIST:** Jack Bryson
- ARTISTS:** Grady Myers, Fred Schimpf
- BUSINESS MANAGER:** Trish Coonts
- ADVERTISING SALES:** Debby Stanard, Rich Landucci
- PHOTOGRAPHERS:** Tom McKercher, Jim Staup, Ron Wilper, Cindy Pace, Ken Walker.
- PROOFREADER:** Sheila Tarp
- CIRCULATION:** Ray Stever
- STAFF ASSISTANT:** Becky Guthrie

Established May 1968, the ARBITER is a weekly publication of the Associated Students of Boise State University.

Articles and letters to the editor must be submitted to the ARBITER office prior to noon Thursday before publication, must be typewritten and bear a legible signature. The ARBITER reserves the right to edit for libel and taste.

Opinions expressed in the ARBITER are those of the author and not necessarily those of the Student Administration, University Administration or the ARBITER staff.

The ARBITER is a member of the Rocky Mountain Collegiate Press Association and the College Press Service.

The offices of the ARBITER are located on the second floor of the Student Union Building, Boise State University, 1910 College Blvd., Boise Idaho 83725.

NEWSROOM: 385-3401

ADVERTISING: 386-3652

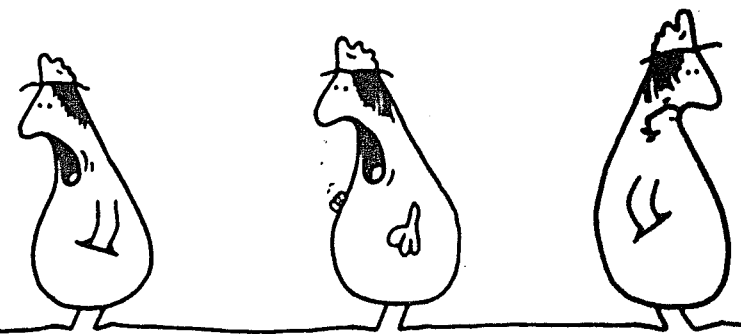
## L.Syd

B. SCHIMPF

AUTOMOBILES ARE A HASSLE...

I CALL MY CAR OPPORTUNITY...

'CAUSE ALL IT DOES IS KNOCK !..



## The helmet hassle

(CPS)--Several months ago, a band of angry bikers went tooling through Washington on their way to the U.S. Capitol. Although their D.C. visit lasted only a few hours, the issue that brought them--compulsory helmet laws--did not ride back out of town with them.

Instead, the cyclists' anti-helmet crusade found plenty of allies in Congress who are currently pushing bills to repeal federal helmet regs. For those involved, the controversy centers less on the question of fashionable motorcycle attire than on the issue of personal freedom vs. government intervention.

A mixed group of Honda owners, Hell's Angels, newspapers and congressmen have taken up the conservative line that Big Brother should mind his own business.

"The government has no business telling the individual when he can or cannot wear a helmet when only the individual's personal safety is involved," said Sen. Jesse Helms (R-N.C.) when he introduced his version of the no-helmet bill.

Argued an editorial in the Richmond News New Leader: "No government should succumb to the superficially seductive argument of paternalistic protectionists forever declaiming their commitment to safety. Taking care of one's self is the self's--not the government's concern."

Bare-headed bikers have never been favorites of the government. Although there exists no federal regulation specifically requiring helmets, economic pressure forces states to kowtow to federal wishes.

The Department of Transportation is authorized to

withdraw all federal highway funds and 10 per cent of highway construction money if a state repeals its mandatory helmet law. This threat hangs over nearly every highway-conscious governor; only three states don't have mandatory helmet laws on the books.

Furthermore, the motorcycleists' "I-have-a-right-to-kill-myself" argument doesn't wash with helmet advocates: they are concerned with more losses than the cyclists' life or scalp.

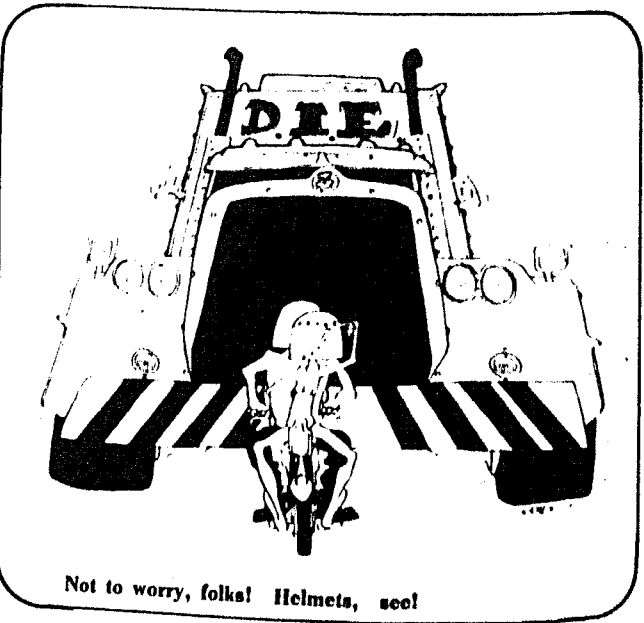
A 1972 federal court decision in Massachusetts, which upheld the constitutionality of the state's helmet law, stated "While we agree with the plaintiff that the act's only realistic purpose is the prevention of head injuries incurred in motorcycle mishaps, we cannot agree that the consequences of such injuries are limited to the individual who sustains the

injury."

The court decision went on to say that "from the moment of injury, society picks the person up off the highway; delivers him to the municipal hospital and municipal doctors; provides his with unemployment compensation if, after recovery, he cannot replace his lost job, and if the injury causes permanent disability, may assume the responsibility for his and his family's subsistence."

The assumption made by the Department of Transportation and the court is that citizens prefer not so spend their money--in increased taxes, higher insurance premiums, higher hospital costs--on maimed bikers who chose not to be bothered with helmets.

How this reasoning will stand up in Congress when the anti-helmet bills are unleashed for vote, remains to be seen.



# advice / dissent

## letters..

### B-100 methods questioned

Editor, the ARBITER

I would appreciate your printing this letter. I suspect many have taken, are taking, or will take Biology 100 and, thus, I feel it is relevant. This is in regard to the chicken embryo laboratory for B-100, Concepts in Biology:

The means justify the ends. Or so we are told as a preface to destroying sixteen live chicken embryos (per lab). I don't want to debate this philosophy nor am I looking for an honorary

membership in the ASPCA by deploring the destruction of animals in the name of science. Both the philosophy and the destruction may be justifiable. What I am asking is: what are the ends for which these animals are killed? Is it to increase our, the students, knowledge? This seems a worthy goal. But is the design of the laboratory at all conducive to accomplishing this goal? No. Is it a systematic, carefully planned, seriously executed experiment whereby the student nurtures a particular embryo from Primitive Streak to hatching carefully observing the

different stages of development and thus obtaining valuable experiential knowledge of embryology? No. It is a crash course in how to extract four embryos from their eggs in one-half (1/2) hour and note that, indeed, there is - or was - something alive in there. I wonder what enlightening knowledge we gain by forcing an all but mature chick out of its shell and into a petri dish filled with a "comfortably warm" saline solution so that we may listen to it chirp while we watch it die.

Eric Hart

### Welsh appreciates support

Editor, the ARBITER

I wish to thank those students who participated in the ASBSU Primary Elections for the measure of support indicated for my platform. A careful analysis of the returns indicates to me that the influences of the fraternity-sorority and business blocks are fast-receding. I am encouraged by this trend and therefore declare myself to a viable candidate for the Presi-

dency in the forth-coming ASBSU General Elections. If more independent voters turn out for the General Elections, I am sure that the Presidency can be reclaimed from the special interest groups on this campus.

The expenses which I have incurred to-date are for lay-out and printing. Of \$90.00 total expenses, \$30.00 has been provided through donations.

It is going to be difficult to

wage a write-in campaign for the ASBSU Presidency, but the rules of the Election Board prohibit placing the name of the #3 candidate (on the basis of primary returns) on the ballot. However, I believe that the majority of the voters realize the need for reform of the student government and if it takes a write-in campaign to accomplish this...let's give it a try.

Howard Welsh

## PEOPLE



by Tom McKercher



Uncle Ernie

### Extraterrestrial admits presence

Dear Uncle Ernie,

I am a being from a planet called Kocainia, which is many light years away from this solar system. The Kocainian civilization is approximately 984,653.82 years more advanced than your Earth civilization. I will attempt to communicate in terms that are as general and as illogical as possible, so that you and your species will be capable of understanding my statements and questions.

First, I shall explain the reason for my existence on this planet, then I will ask you some rather puzzling questions concerning your culture. You, Uncle Ernie, being the most logical person of this world, will be able to answer my questions with relative ease, at least for a humanoid.

I was sent here for a time, in your understanding, of six months. In that duration I was to study the information from one of your primitive communication devices commonly referred to as a television. The

task was perhaps the most amusing involvements of my entire existence of well over three Kocainian decades (8,976,084916 earth years). The complex analysis that I will turn into my superiors is too long and involved to report in this letter. However there are, believe it or not, a few items in my report that even I can't explain. i.e.: What is this creature that you call a Ronald Reagan and what is his purpose? What is that magic stick that allows your local weather forecasters to predict the weather? Why does your army known as the National Football League conduct wars only on certain days of the week, and then for only six months of the year? I might add that I watch your army conduct its battles on your temple grounds, called oddly enough Bronco Stadium. My biggest and most complex question involves one of your religious programs that airs on one of the local stations. The religious rite starts with the appearance of a rather unusual animated rodent with large comic ears and some of his animated disciples. This

[cont. on page 12]

### SUPB sponsors week of events

Editor, the ARBITER

The subject of this note is to make you and your organizations aware and hopefully active in a week of events this spring sponsored by the Special Events Committee of the Program Board. I firmly believe that the students of this University have something missing from their

experience at BSU. You may feel from reading this message that the activities planned will just be something to do - something else to take up time.

Hopefully, with your interest together we can replace the current feeling of apathy toward campus events.

Please select a representative to meet with us all on Thursday -

March 11, 1976 - 4:00 p.m. - in the Ballroom at the Students Union Building. Please RSVP to Student Union Programs Board

385-1223. A complete letter

stating all proposed activities is available in the Programs Board Office, second floor of the SUB.

Tom Beeler  
Chairman

Special Events Committee

IN CONCERT - ONE NIGHT ONLY

ATLANTIC RECORDING STAR

JEAN-LUC PONTY

...THE WIZARD OF THE VIOLIN.

ROLLING STONE

ALSO APPEARING

CHAUSEE SWAN

SAT. MARCH 20

AT THE

ADA THEATRE

TICKETS ONLY \$4

TICKETS AND INFORMATION AVAILABLE AT BUDGET TAPES AND RECORDS  
916 Broadway 336-4122

LIMITED SEATING

### RESEARCH FREE CATALOG!

Write or call for your copy of our latest catalog of over 5,000 research studies. These studies are designed to HELP YOU IN THE PREPARATION of

- Research Papers
- Essays
- Speeches
- Case Studies
- Book Reviews

WE ALSO DO CUSTOM WRITING

MINUTE RESEARCH

1360 N. Sandburg, #1602  
Chicago, Illinois 60610  
312-337-2704

# campus news

## VA advises vets on summer school

Some veterans, who have aspirations of continuing their schooling through the summer months, have become concerned over the fact that Boise State University has dropped the 12-month certification in favor of certifying the academic year and summer sessions separately. The new certification procedure, while solving the problem of BSU incurring undesirable liabilities for some veterans' over-payments, creates an additional problem for summer school-bound veterans. That problem is "no V.A. pay from the end of spring semester (May 13) to the beginning of the first summer session (June 7).

The Regional Veterans Administration conferred with BSU officials and together they developed an equitable solution. The solution hinges on veterans, who are certain that they will be enrolling in the first BSU summer session, notifying the veterans' certification clerk (Admin. Bldg., Room 108) of their plans. If this notification is served between **March 15 and April 7th**, the V.A. will see to it

that they are paid for the break. Those veterans, who are positive of their intentions to enroll for summer school, must notify the certification clerk in order to insure receipt of payment for the break.

- Two final notes of caution:
1. Don't notify the certification clerk of your planned summer attendance unless you're **absolutely sure** you are going to enroll!
  2. If you tell the certification clerk you're going to attend summer school...register and attend!

## VA offers 'helping hand' with certification dilemma

A short phrase in the Veterans Administration's regulations has been receiving a considerable amount of attention lately. The phrase is "satisfactory progress", and it concerns the progress a veteran is making in reaching his declared degree objective.

Boise State University, and all other schools accredited by the V.A., have been required to establish "standards of progress. For BSU these standards include supplying the Veterans

Administration with the names of veterans who are not progressing, in a satisfactory manner, towards their degree objective. The system works like this:

Each semester the "dismissal lists" will be screened for veterans and the list of subsequent names will be turned over to the Regional Veterans Administration. Also, each veteran's previous semester grades will be scrutinized by the Registrar's Office, and a list

of names will be accumulated of all veterans who received all F's, I's, NC's, or W's. These names will also be turned over to the Regional Veterans Administration Office.

The V.A., upon receipt of a veteran's name, will probably "cut-off" the veteran's benefits and notify him by mail to come in for counseling. After completion of counseling the V.A. has the option of refusing or reinstating further V.A. benefits.

## Union Pacific president to visit Boise State

The Office of Career and Financial Services is sponsoring a visit to Boise State University by the president of Union Pacific Railroad, Mr. John C. Kenefick.

He will be on campus March 23 to speak at 10:30 a.m. in the Special Events Center. Following his presentation, Mr. Kenefick will take part in a

luncheon and tour of selected parts of the campus.

The subject of Mr. Kenefick's speech will be "The Railroad Industry in Transition." Career and Financial Services feels Boise State is fortunate to have a man of Mr. Kenefick's stature speak on campus, and they actively encourage all students and staff to attend.

## Bicentennial tour offered

The BSU History department is sponsoring a Bicentennial tour to Richmond, Williamsburg, Washington, DC, Philadelphia, New York, Boston and other places. The tour will be personally directed by Dr. John A. Caylor, a professor of history at BSU. The tour will leave by air on Friday, June 11, and return by air on Sunday, June 20.

The price for the tour is

\$535.00 and includes air fare between Boise and the East, chartered bus on the East coast, transfers, hotel accommodations, admission to scheduled sights, guides, special tours and accident and health insurance.

Available with the tour are two hours of History credit.

For details and further information contact Dr. John Caylor at 385-1128 or 385-1255, or at home at 344-7075.

# messenger service

### monday 3/8

Women's Alliance Senate Chambers 6 pm

### tuesday 3/9

ASB Senate Senate Chambers 4:30 pm  
Photo Club Caribou 7 pm

### wednesday 3/10

Brown Baggers Clearwater 11:30 pm  
Chess Club Clearwater 7:30 pm  
SAC film - Witnesses Big 4 12:30 pm  
Celebration Special Events Center 8 pm

### thursday 3/11

ASB Judiciary Nez Perce 3:15 pm  
Radio Club Teton 6 pm  
Coffeehouse - Mad Jack and the Black Label Boys Boisean Lounge 8 pm  
Celebration Special Events Center 8 pm

### friday 3/12

International Cinema Series - Third After The Sun Boisean Lounge 3 pm  
LA 106 7 pm  
Coffeehouse - Mad Jack and the Black Label Boys Boisean Lounge 8 pm  
Celebration Special Events Center 8 pm

### saturday 3/13

Benefit Coffeehouse for Pioneer Issue Boisean Lounge 6 pm  
Celebration Special Events Center 8 pm

### 3/14 thru 3/21

SPRING BREAK!

Announcements, notices of meetings, student classifieds and personals are printed free of charge in the ARBITER MESSENGER SERVICE. Items must be submitted by Thursday noon.

We would like to exchange our home during this summer with either married students or professors and or their families.

Our home sleeps up to six very comfortably and is located 40 minutes by car west of Boston, three hours to New York and five minutes to a state park with swimming. This is a bicentennial year, and we are very close to many historic areas.

Our family consists of four children, aged five to twelve, a teaching husband and a wife, who is a nurse.

If anyone is interested, please write to:

Ken & Ruth Perlow  
13 Rockpoint Road  
Southboro, Mass. 01722  
or telephone: 1-617-485-3483

**Excellent buys:** 1970 Toyota Corona Mark II, 1900 cc engine, 4 speed trans., AM/FM radio, bucket seats. Call 939-6579 after 5 pm, or call 342-9618 and ask for Rob.

classified

Earn \$250.00 per thousand addressing stuffing envelopes at home. Information: Send \$1.00 plus addressed, stamped envelope to Heskey Associates Box 821NN, Covington, Kentucky 41012.

**Good transportation:** '73 Yamaha 250 Enduro, good condition, helmet, tie downs, lots more extras. \$495. Call after 6:00 at 375-7404.

**For Sale or Trade Equities:** 1975 Yamaha 650. Low mileage, showroom condition. 344-8716.

Library hours over spring break will be:  
Saturday, March 13, Sunday, March 14: closed.  
Monday, March 15 - Friday, March 19: 8:00 a.m. - 5:00 p.m.  
Saturday, March 20, Sunday, March 21: regular hours.

the cold-drill. BSU's literary magazine, is currently on sale at the Bookstore for 97 cents a copy.

The Handweavers Guild of Boise Valley presents an exhibition and talk by Jean Scorgie on Tuesday, March 9, at 7:30 p.m. at the Bishop Tuttle House, 512 N. 8th. Ms. Scorgie will show slides and talk about clothes shaped on the loom. There will also be an exhibit of her handwoven articles. The event is open to the public with an admission charge of \$1.00.

**For Faculty and Staff:** New swimming pool hours. "Family Swim" will be Monday, Wednesday, and Friday from 4:30 to 9:00, and on Sunday from 3:00 to 5:00. Your University ID must be shown and there is a limit to one guest per person.

**Stop Pioneer Party** with music by Heartsong & lecture on Pioneer Coal-Fired Plant. Monday, March 8, 7:30 p.m. at 10th & Front Streets, next to Forest Innocent.

**Kappa Sig:** Are you going to put a flag in Buddha's navel and use him as a raft?

Ed  
personals

Stardusters:  
Boy, do we appreciate you!  
Kappa Sig



Sun Bear, a Chippewa Indian medicine man, author, and founder of the first new Indian tribe this century, the Bear tribe, will speak March 20 and 21 at the Y.W.C.A. Inner Forum. On March 20 he will speak at 7:30 p.m. about Medicine Power. On March 21 from 1:00 p.m. - 5:00 p.m. he will conduct a workshop on how to survive during the "coming cleansing of the Earth Mother." Admission is \$3.00 a piece for both the lecture and the workshop.

## 'Celebration' runs March 10-13

Excited students from the Music and Theatre Departments are busy readying their minds, voices, and bodies for the upcoming production of CELEBRATION. The musical by Tom Jones and Harvey Schmidt will open on March 10th and run through the 13th in the Special Events Center. Students are especially invited to the March 10th performance which is the official grand opening of the new theatre. As always, students will be admitted free with their activity tickets and general admission tickets are \$2.00. Tickets will go on sale March 3rd. The number to call for reservations is 385-3566.

Director Larry West and Musical Director William Taylor have cast Denise Zundel as Angel, Sal Sanzo as Orphan, James Dobson as Potemkin, and Joe Farmer as Edger Allen Rich. The Revelers are: Larry Peterson, John Edgerton, Steve Marker, Bob Wallace, Mike Hofferber, Jerry Fields, Elizabeth Streiff, Barb Shockey, Teena Marchek, Jan Logan, Barb Lingenfelter, Seelye Smith, and Jody Burton. CELEBRATION is a musical about winter. It involves song, dance, movement, acting and should provide a most interesting evening of imagination exploration. Be an imaginaut. See CELEBRATION.

### THIS WEEK ON KAID-TV

- Monday, March 8**  
 6:30-International Animation Festival #208  
 10:00-Austin City Limits #110 "Balcones Fault"
- Tuesday, March 9**  
 8:00-A National Geographic Special #101 "The Incredible Machine"  
 9:00-The Adams Chronicles #108 "John Quincy Adams: Secretary of State"
- Wednesday, March 10**  
 9:00-Great Performances #220 Theatre In America #304 "Time of Your Life (2 hours)"
- Thursday, March 11**  
 8:30-Lowell Thomas Remembers 1936 #122  
 9:00-Hollywood Television Theatre #401 "The Hemingway Play" (1 1/2 hours)  
 10:30-Birth Without Violence
- Friday, March 12**  
 6:30-The Magnificent Adventure  
 10:00-I Regret Nothing (1 1/2 hours)
- Saturday, March 13**  
 2:30-The Japanese Film #105 "Harakiri"  
 9:00-Film Classic Special "Oklahoma" (3 hours)
- Sunday, March 14**  
 5:00-Pygmyes  
 7:00-The Adams Chronicles #108 (R) "John Quincy Adams: Secretary of State"  
 8:00-Nova #310 "The Williamsburg File"  
 9:00-Masterpiece Theatre "Upstairs, Downstairs" #311

## Inter-Faith Council founded

The BSU Inter-Faith Council has been newly formed, composing of representatives from recognized religious groups on the BSU campus. The purpose of the council is to further tolerance and understanding between the various faiths, and to encourage communication and co-operative participation in campus functions stressing essential spirituality as an integral part of college life. Initial organizations represented include: the Baha'i Association, the Baptist Student Union,

Biblical Studies Center, the Catholic Newman Club, and the LDS Student Association. We cordially invite other campus religious groups to participate and share with us in the spirit of oneness. Inter-Faith council meetings are held weekly on Tuesdays at 5:30 p.m. in the Bannock room of the SUB. "God grant that the light of unity may envelop the whole earth, and the seal 'the Kingdom is God's' may be stamped upon the brows of all its peoples."

### GOVERNOR'S SUMMER INTERNSHIP PROGRAM

The Governor's Summer Internship Program will employ two college students in positions within Idaho State government from June 14 through August 11, 1976. The focus of this program is provide a learning experience in government through on-the-job training. Interns, who must be Idaho residents, will be assigned to full-time position within a State department, and will attend week-afternoon seminars on topics of interest. Compensation will be \$2.20 per hour, or \$756 for the summer. Students are urged to obtain credit for their internship work through their individual advisors or Scott Higgenbottom, University of Idaho; Drs. John Eyre and Richard Foster, Idaho State University; or Dr. Bill Mech, Boise State University. Interested students should apply by April 16 to:

D. E. Chilberg, Director  
 Department of Administration  
 145 Len B. Jordan Building  
 Boise, ID 83720

Resumes must include, and selection will be based on: (1) background and qualifications, i.e. grade point, activities, work experience, and interests; (2) reasons for wishing to join the program; and, (3) letters of recommendation should also be sent. Students must also indicate their preference for three specific positions from the list below (subject matter included) for placement, and are strongly urged to study detailed descriptions of these positions available from Dr. Bill Mech, Mr. Richard Rapp, Career Services Office; or School of Business.

Students will be informed of their selection and placement by April 30.

#### POSITIONS

Attorney General - 2 positions: Legal Research; Education - Gifted Children, Fish and Game - Fiscal, Budget Projects; Health and Welfare - 2 Handicapped and Disadvantaged, - St. Anthony Youth Center, Historical Society - 2 Oral History, - Biographical Research; Labor - Safety Inspections; Law Enforcement - Procedures Manual; Parks & Recreation - 5: State Water Recreation, - Park Planning Manual, - Public Relations Projects, - State Trails Plan, - Veteran's Memorial State Park; Personnel Commission - Job Classification; Project Planning - 2: Energy Usage, - Office Space Needs; Secretary of State - Sunshine Initiative; State Library - 2: Medical Library Research, - Idaho Library History; State Planning - 2: Land Use Data, - State Planning Policy; Tax Commission - Auditing; Tourism & Industry - Industrial Site Locations, Water Resources - Carey Act.

"AN EQUAL OPPORTUNITY EMPLOYER"

### career corner

## Education & employment

**Q. How can I maximize my chances of getting a job when I graduate three years from now?**

**A.** Consider "dual career planning" even if it means an extra year of schooling. Dual career planning simply means having a strong minor or second major. By having two subject fields a graduating student may find greater opportunities from having qualifications for jobs where the combination is a distinct asset such as combining English or communication with a technical or business field, or coupling information sciences with just about any other field. Computer specialists should have great opportunities in the future if they have another expertise tied to their knowledge of electronic data processing. Dual career planning also enhances employability by

giving the individual a second field to fall back on. Many students could greatly improve their career opportunities by a wise choice of electives or by taking a few credits beyond the minimal requirements.

**Q. Is it true that those who do not finish school have done as well as college graduates?**

No, 1975 Bureau of Labor Statistics indicate that a person with a degree is still less apt to be unemployed than those without one:

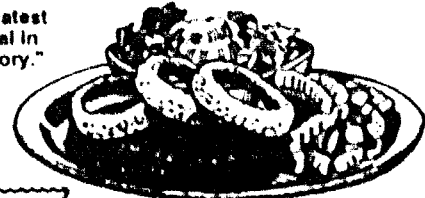
Education Level	Jobless Rate
4 years college	2.9%
1-3 years college	6.9%
4 years high school	9.1%
1-3 years high school	15.2%
8 years elementary	11.3%
less than 8 years	12.4%

# WANTED

## "BEEF RUSTLERS"



"Greatest Steal in History."



FOR KIDS - "Little Boy Burger" Fries and Salad 76¢

Ground Beef Dinner Special

\$1.76  
 French Fries  
 Onion Rings  
 Toasted French Bread  
 Crisp Lettuce Salad

JB's BIG BOY

FAMILY RESTAURANT

Offer expires 3/28/76



# student government

## ASBSU Profiles

### Royanne Klein, Senator, Arts and Sciences



"As students we always want our own way. Student government is a good place to learn about compromise," stated Arts and Science Senator Royanne Klein in a recent interview.

"When the controversy over the naming of buildings constructed with student funds came up this year, the students wanted their own way. Students wanted to name their own buildings. In a way, it was good we were standing up for students rights, but we have to keep in mind that the decisions we make this year will be affecting this campus long after we're gone. We learned to

compromise on this issue. As it stands now the Executive Council, which has two student representatives, the ASBSU President and Vice-president, will decide what names to give new buildings.

"I hope the parking situation on this campus won't come up again. The scholarship parking system that we have now is a good one. It provides the same opportunities for everyone; students, faculty and staff. Actually, students are gaining the most from it since the money from the sale of parking spaces goes to student scholarships. We've really gone by trial and

error trying to find the right system, but this one seems to be working best for all concerned. Of course there's been a lot of griping, but we can't give everybody their own way.

"I don't think the campus day care center is a dead issue yet. It will be a referendum question on the general election ballot. This will give us a chance to see if the students really want it. An issue like this just can't be pushing through the senate. We've voted it down in the past because it hadn't been thoroughly investigated. We started talking about it last year and we're still talking. I hope that

next year we'll see some more tangible results.

"Everybody on the student senate is in favor of a day care center, but they're not all willing to commit students funds to the project. This is a pretty unrealistic view since if you want something you have to pay for it. If we want a day care center on this campus it's going to cost us money.

"I would like to see the ASB help out the Minority Cultural Center. I think there is some division between the minorities and the rest of the student body. The ASB needs to show some financial responsibility for this

group. We recognize them officially as a BSU organization, but we ignore them financially. I think our minority students need to be encouraged to work in student government and the Programs Board. In this way we could learn more about their cultural backgrounds.

"A lot of research and planning has gone into the development of a campus dental health program this year. I think it is a disadvantage that it has stayed in committee all year. I'm afraid that we may try to rush it through the senate before the term ends and I feel

(continued on page 12)

### Senate Report

## ROTC, 'vacations' considered

by George Nells

Dr. Taylor, Vice-president for Student Affairs, came before the Senate Tuesday to appraise the Senate of the ROTC program. Dr. Taylor said that in the past he had relieved questions concerning the program and decided to inform the Senate of the program in case it ever comes to Boise State. His "information for exploration" would include, in a well-rounded program, a space total of 22,000 square feet and a capital expenditure of \$4,000.

The space would be the most critical aspect if the program were considered. "A phase-in program" utilizing a vacated faculty house would be the first step in a "minimum University investment." The staff of the ROTC and all material except for office space would be supplied by the Armed Services. He also said it would be started with just an on-campus office.

Howard Welsh, Senator from Health and Sciences thanked Dr. Taylor for informing the Senate of this new program, but

asked that in the future there be more and better communication about curriculum development.

Under old business, Mike Hoffman brought back a bill asking \$1146.00 to send the future officers of the Executive branch of Student Government back to Washington D.C. for a session on collective bargaining. "The more I look at it, the more merits I see in it," Hoffman remarked. "The Faculty Senate is looking at it and we should too."

Welsh expressed "I don't see any new rationale." He said the new officers could "go next door to Oregon." The students have collective bargaining there, he said.

Senator Hertling observed that the "last time there was a lot of narrow-mindedness in the

Senate. We're not Oregon of Washington. The real value of the conference" he said, "is interaction."

Doug Gouchner contended "it's not the function of this body to provide vacations." Senator Wynkoop noted the proximity of Oregon and Washington and their similarity in problems.

Mike Hoffman said the conference would inform the officers of the "way to go about talking to legislators." He expressed a fear that if "untrained" people go about lobbying for material they might "turn people off" and possibly "lose a vote for years."

Jim Crawford submitted that "there is no place to go to get this information in a lump sum measure."

Welsh then brought up a previous proposal used by the ARBITER when they wanted funds to go to a conference in New York. There were stated "specific things they wanted to learn" printed into the proposal schedule. He said he saw no such format in this request. "has anyone attempted to contact Oregon?" he asked. He said the officers could as well go to "this library, the public library."

Hertling called the objections "negativism." He said that "progressive administration" is one that moves around. Something better than a President who jumped ditches on tricycles.

The motion for "to receive a two thirds majority needed for

passage of fiscally oriented bills.

Senate-Bill #3 was read for the first time. The bill would allow for a Minority Cultural Board. Howard Welsh noted that the organization is included in the Student Handbook as a viable organization, but in actuality it is a shadow group. "Get this thing legitimate once and for all," he said. "(We) shouldn't be hypocrites" "(it's) false advertising."

Margarita Mendoza spoke from the gallery stating the purpose of the Board would be for "any group that has special needs." Talking to a member of the Senate she said "you are a special student, you are a senator."

The discussion about the position of Administrative Assistant was brought out of committee with the recommendation that the position be funded to the sum of \$60 a month. Nate Kim noted that the time spent per week for the job was "at least eighteen hours." It was reported that John Flewelling, Judiciary Head had recommended the retention of the Assistant position.

Next week the Constitution for the Inter Faith Council will be brought before the Senate. Ron O'Halloran in referring to the copies printed by the ASBSU for multi-student reference said that "due to the cost of copying those damn things one copy will be available in ASBSU offices and one in the Senate offices."

**STOP PIONEER PARTY**  
 COFFEE DESSERT AND LIVE MUSIC  
 by HEARTSONG  
 DAVE BOCKMAN speaking on  
 Idaho Power's "PIONEER PLANT"  
**MARCH 8 MONDAY EVENING 7:30**  
 CORNER OF 10<sup>TH</sup> & FRONT

**WHAT?!?!?**  
**CAMPUS STORE GIVING AWAY MONEY?**  
 Yes, Your Campus Store is giving away Money. They'll give you 2¢ for every white Campus Store plastic tote bag you bring in. Do your bit for recycling and get your 2¢ worth!

**HOLLY WILL WORK FOR:**

- Student Bill of Rights
- Incorporation of student government
- Increased student services, including improved health care, dental care (not just emergency first aid) and child care
- Increased student participation on student-faculty committees
- Academic Grievance Policies which assist in improving academic quality and fairness, not just perpetuating the status quo
- Job descriptions for Senators and other recipients of service awards which delineate their responsibilities to the students

**HOLLY TROUBETZKOY WELSH**  
 for  
**HEALTH SCIENCES SENATOR**



March 10

**GALA  
PREMIERE  
OPENING**

The Departments of Music and Theatre Arts  
of Boise State University  
present

*Celebration*

A musical by Tom Jones and Harvey Schmidt

Directed by L. L. West  
and  
Musical Direction by William Taylor

**MARCH 10-13**

**BSU Special Events Center  
BSU Students Free**

**For Reservations**

**Call 385-3566**

**3-6 pm daily**



# entertainment

## AFT to present 'Joe Egg'

The Antique Festival Theatre production of "Joe Egg" will be presented in the BSU Special Events Center, March 21 and 22. Curtain times are 2:30 and 8:00 p.m. Tickets are \$1.00 for students with activity and faculty cards, and \$2.00 general admission. Tickets are available in the information booth in the SUB.

Joe Egg is a play which will be of special interest to drama students, as well as those

involved in any kind of social work, health, psychology, criminal justice and special education. Joe Egg is Josephine, a 10-year old "spastic" who is the catalyst around which playwright Peter Nichols fuses, explores and explodes relationships and attitudes of the people around her. Much of the play is funny, but that butt of the jokes is never the child, rather it is the world and the people around her whose inadequacies and crassness are ridiculed.

As a viable entertainment Joe Egg attests to the readiness of the theatre-going public to admit the existence of the social reality of mental retardation, just as films like "Guess Who's Coming to Dinner" admitted the reality of mixed racial marriage. Plays such as these which couch attitudes within the

framework of acceptable entertainment may change our basic philosophies one of these days.

## Faculty to present piano and voice recital

The last Faculty Recital will be presented in the Boise State University Music Auditorium on Friday evening, March 12, at 8:15 p.m. The featured artists will be Carroll Meyer, piano, and Catherine and Wilber Elliott, mezzo-soprano and tenor.

Carroll Meyer is well-known in the Boise Valley music community for his teaching and his performance. His students have won several local, state, and regional contests and auditions. He is now Professor of Piano at BSU, with degrees from the University of Iowa. Mr. Meyer is also serving as Vice-president of the Idaho Music Teachers Association. Mr. Meyer will perform three works from the 18th and 19th centuries. Mozart's PIANO SONATA, K. 330, was written while the composer was in Paris, and its restrained dimensions were supposedly influenced by Schubert's piano sonatas. Although Schubert's IMPROMPTU, OP.

90 NO. 3, was one of the last works of Schubert's life (1828), it wasn't published until 1857 and then it was published in the wrong key--G rather than Gb! Chopin's BALLADE in f minor, OP. 52, is one of four large single-movement works that Chopin wrote under the inspiration of the Lithuanian ballads.

Catherine and Wilber Elliott have been at Boise State University for the past seven years. Mr. Elliott is chairman of the Music Department and director of choral affairs, and Mrs. Elliott has severed on the voice faculty as a pedagogist, coach, and solo performer. The Elliotts completed undergraduate degrees at the University of Washington and graduate degrees at Central Washington State University and Boise State University respectively. Both have been active throughout Washington, Oregon, and Idaho as clinicians, adjudicators, and soloists. Their most recent performances were with the Boise Philharmonic in the presentation of Handel's MESSIAH.

Mrs. Elliott will perform two songs from Schumann's LIED-ERKREIS, and three songs from Brahms' collection. Mr. Elliott will perform two recitatives and arias from the MESSIAH. They will join forces for Bach's DOMINE DEUS from the B minor Mass, and ERA GL' AMPILESSI from Mozart's Cosi fan Tutti. A highlight of the recital will be the premiere performance of excerpts from Dr. C. Griffith Bratt's newly-completed opera MALINCHE. The opera is set in Mexico and deals with the confrontation of Montezuma and Cortez and the decline of the Inca civilization.

The Elliotts will be assisted during their program by Daniel Russell, piano; Sue Norrell, flute; J. Wallis Bratt, cello; and Dr. C. Griffith Bratt, organ.

Admission to this FACULTY RECITAL will be by season tickets or by single tickets purchased at the door.

## Auditions for 'Madwoman' begin March 9

All BSU students, part-time, full-time, any major you can name, are invited to audition for

the last play of the theatre department season, "The Madwoman of Chaillot" by Jean

Giraudoux. Dr. Ericson, director of the show wants students "to get involved, to dip your hands in scene paint, to paint your face, to have a ball doing theatre. Theatre department productions are open to all students at BSU so give us a chance to discover and promote your talents."

[cont. on page 10]

INTERNATIONAL

Boisean Lounge  
3:00 pm

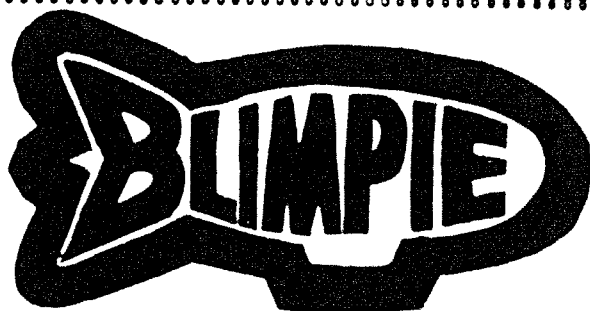
Friday, March 12

7:00 pm  
LA 106



from Bulgaria-  
THIRD AFTER THE SUN

free



and the  
**Ice Cream  
Shoppe**

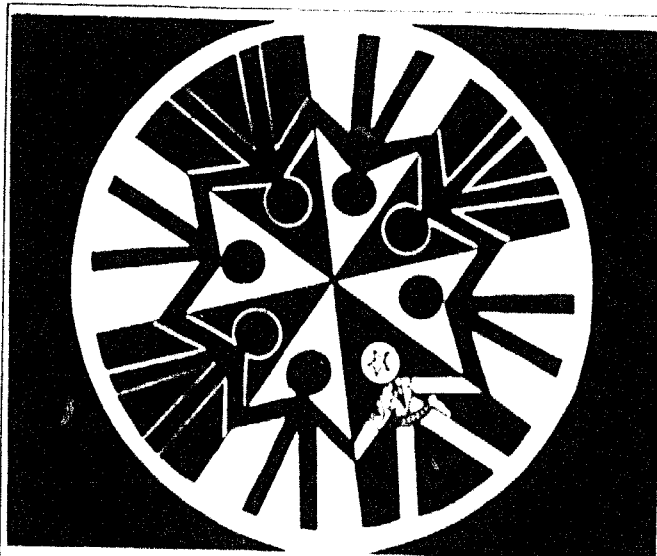
### Student Services:

- After awards of \$1215 to the staff involved, only \$735 was actually authorized for "student services". Thus, less than 1% of the ASBSU Budget for this fiscal year was allocated for what this candidate considers to be the most important section of the student government. As a realistic transition, this candidate will increase allocation for student services to approximately 10% of the total budget if elected. This money will be derived from surplus and reprioritization of ASBSU programs and services.
- Investment in program development for student services, including an \$8000 cash-match for federal funds to implement the "BSU Child-care proposal" and \$15,000 for a pilot dental care program. These two programs will account for most of the increase in spending for student services.
- Assignment of the Director, Student Services to the Student Health Advisory Board. Increased responsibility for the insurance counseling and legal services programs. Direction of individualized programs of assistance to international and handicapped students. PLEASE NOTE THIS CANDIDATE CONSIDERS A WELL STRUCTURED PROGRAM OF STUDENT SERVICES TO BE THE KEY TO VIABLE STUDENT GOVERNMENT. Far sighted executive direction is necessary for an improvement of student services.

### Affirmative Action:

- Promotion of the option for students to earmark 50% from the ASBSU fee for the development of a Women's Center
- Assumption of financial responsibility for the Minority Cultural Board up to \$3000

Campaign Issues  
raised by  
**HOWARD WELSH**  
Write-in Candidate  
for  
the ASBSU Presidency



**WILSON**  
A BOLEMON OF OPARCHOID

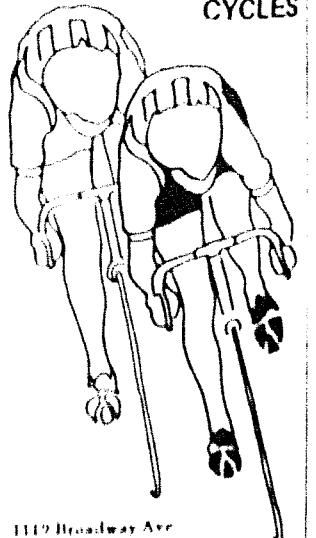
... ..

MEETING  
MARCH 10



MEETING ROOM  
12:00 PM

### GEORGE'S LIGHTWEIGHT CYCLES



1119 Broadway Ave  
Phone 343-3282

FALL BIKES IN STOCK - 10% OFF

ANTIQUA FESTIVAL



THEATRE

PRESENTS

# joe egg

By Peter Nichols

Directed by Aldrich Bowler

Bristol, England .....

..... **The Time Is Now**

Presented by Special Arrangement with Samuel French, Inc.

BSU Special Events Center  
March 21-22      2:30 & 8:00 pm



Bud Cook  
as Bri



Jahna Beecham  
as Sheila



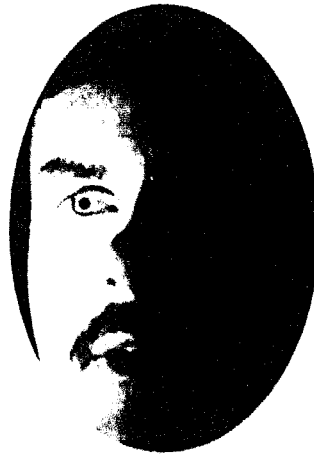
Bitsy Bidwell  
as Pam



Phillip Billey  
Set Design and  
Supervision



Marie Mathay  
as Grace



Curt Olson  
as Freddie



Anya Springer  
as Joe Egg

Students \$1.00

General Admission \$2.00

Tickets available at SUB Info Booth

# BSU health center answers questions about high blood pressure

**Q. Why is high blood pressure (hypertension) a problem?**

A. Most people with high blood pressure feel well. Very rarely does it cause nosebleeds or headaches, etc. It is not likely to be suspected until your blood pressure is actually taken.

Blood pressure fluctuates normally, so many readings may be needed to decide whether someone requires treatment.

**Q. Why is high blood pressure difficult to treat?**

A. Proper treatment of high blood pressure often requires major changes in life style and dietary habits. Since one does not feel sick, it is often difficult to drastically restrict intake of salt and salty foods, or even more, to take expensive medications (usually diuretics) several times a day, and possibly

suffer bothersome side effects. Cigarettes, coffee and obesity may also contribute to elevate pressure and worsen its effects on the heart.

**Q. Why do we even treat high blood pressure?**

A. High blood pressure damages the heart and arteries if untreated for years. It contributes to heart attacks, congestive heart failure, arrhy-

thmias, damaged kidney and brain vessels, causing kidney failure or strokes respectively. Treatment can reduce risk of these consequences and increase life expectancy.

**Q. What causes high blood pressure?**

A. No definite cause has been proven yet for most people. About a fifth may have a disease in one kidney which causes high

blood pressure, and may be cured after surgery. For most people, however, there are only theories that anxiety, uncontrolled stresses, or the brain and nervous system are responsible for high blood pressure.

The Student Health Service will be glad to measure your blood pressure free, March 10, 1976, at the entrance in the library.

## Madwoman

[cont. from page 8]

"Madwoman" contains roles for literally dozens of actors and actresses. It is the largest cast show in the history of the theatre arts department. "We need the help of any and every student who ever felt the call to 'tread the boards.' We like to see students in the audience, but how much more fun it is to see students in the spotlight. Come on over and give theatre a try; it might just be the most fun you've had in a long time," says

Dr. Ericson.

"The Madwoman of Chaillot" is a wise and whimsical tale of a charming "madwoman" who sets the world right in the course of an afternoon. It is a warm and comic play that captures the magic and wonder of the stage.

Readings for "Madwoman" will be held in the Subal Theatre on March 9, 10, and 11 at 3:00 p.m. and on March 9 and 11 at 7:00 p.m. Copies of the script are available now at the theatre department office and may be checked out for examination prior to audition. Rehearsals will begin after spring vacation.

## critic's corner

### Jean-Luc Ponty, 'wizard of the violin'

by Rich Landucci

Rolling Stone said that he is the wizard of the violin. And as I sit here listening to Jean-Luc Ponty's newest release on Atlantic Records, I'm inclined to agree. Okay. So who is Jean-Luc Ponty? He is undoubtedly the finest jazz-rock violinist in the short history of jazz-rock.

The first time I became acquainted with Ponty was several years ago on Elton

John's album, Honky Chateau. He was then obscure, but now, after associations with recording artists like Elton John, Mother Frank Zappa and Mahavishnu John McLaughlin, to name just a few, Ponty is rising out of the mist and into the midst of eager listeners. (But not in Boise; only because radio here, specifically FM, has not evolved into a sophisticated medium. Hearing Fly Robin Fly 47 times a day is beyond my capacity of enjoyment and probably yours as well.)

Ponty's album, Aurora,

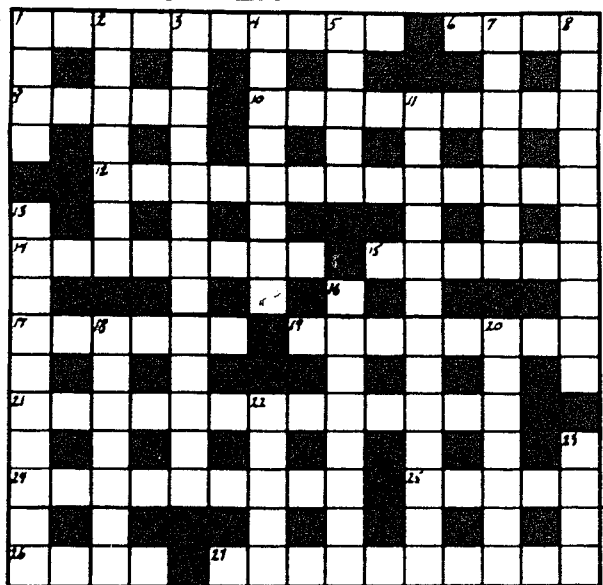
recorded in L.A. last December demonstrates Ponty's astounding accomplishments in composition as well as arrangements. Pianist Patrice Rushen adds a beautiful blend of acoustic and electric piano as well as a delightful touch of synthesizer throughout the album. With ex-Mother bassist Tom Fowler, drummer Norman Fearington and Darryl Stuermer on guitar, render this album a refreshing experience.

John Lennon once said that he could make a guitar speak. If that is true the same may be said about Jean-Luc Ponty and the violin. He has shattered the synonymy of the violin with classical music.

Renaissance, my favorite cut on the lp (which is nice through the headphones) causes one to envision riding horseback across an endless stretch of beach on a warm summer day. Good stuff.

The French born musician will be here in Boise for a one night performance March 20. I recommend treating your ears to this innovator of the violin.

## HEADHUNTER



**HEADHUNTER** clues have to be broken down. Rarely do they make sense taken as wholes. The "real" definition, the one actually sought, is almost always at the very beginning or very end of the clue. Constantly search for SYNONYMS for every word or phrase, however vague or far-fetched the connection, until the logical, illogical answer with the right number of letters emerges. The three main types of clues:

**ANAGRAMS**, often signaled by words like broken, scrambled, tangled, mad, sort of, perhaps, now becomes crazy, stupid, new, changed, anything indicating disorder or rearrangement.

**DOUBLE DEFINITIONS**, as in "Game for a traveler" (1) = POLO.

**HIDDEN WORDS**, found in a word or spanning words in the clue and sometimes signaled by among in between etc. Example: "In here warden" A remuneration? (1) = REWARD. Some clues use more than one of these construction methods.

The words often are literal. Sometimes an empty mean one word our reading another. That is, may indicate an "and" in the answer (short) may hint at an abbreviation and soon. Punctuation in a clue has no bearing on its solution.

**Valley Aviation**

- STUDENT INSTRUCTION
- RENTAL & CHARTER SERVICE

4 Instructors to serve you  
 Laura Conner - Stan Kilpatrick  
 Bob MacKinnon - Mark Walker  
 Simplot Hangar  
 Boise Municipal Airport  
 343-4871  
**STOP IN AND SEE US!**

The road is gone,

but the **BROADWAY CHOW NOW** is still here  
 with delicious hamburgers, chicken, & more.

## CHOW NOW

1273 S. Orchard  
 1905 Broadway Ave.

## DRIVE INN

Olympia Brewing Company, Olympia, Washington \*OLY\*

Some things never change. First hinted at in 1919 with a patent for "a tool with which to open milk and fruit cans," the sleek steel line of the classic beer hook had to await the invention of the beer can by American Can in 1935.

When employee Dewey Sampson was detailed to invent this penultimately functional tool, he succeeded in uniting 30 years of thirsty throats with the contents of millions of cans of Oly.

It took skill and ingenuity and the result just can't be improved upon. The same goes for Oly. Some things never change. A great beer doesn't change. Olympia never will.

**OLYMPIA**  
 Beer doesn't get any better.

- ACROSS -----
1. Poles are aides for a national emblem. (10)
  6. Gemstone shows love for a friend. (4)
  9. Burn for a sin, generally? (5)
  10. Chatter appears to reveal late night television fare. (4,5)
  12. TV cue givers let me prosper absurdly with tea, they say. (13)
  14. Foliage sprouts from confused Spanish king behind the putting surface! (8)
  15. Allows to rise and calms down. (4,2)
  17. Our sea is beginning to stir. (6)
  19. Excoriate mutton and a blend of teas. (8)
  21. Correspondent's heading for northern Italy - perhaps in united alert. (8,5)
  24. Tattered frail sail involved in love and war. (3,2,4)

25. Maybe Rosie is a weeper? (5)
  26. It's all in one man's empire (4)
  27. Chap on derailed trains can get caustic and austere. (10)
- DOWN -----
1. Diet quickly! (4)
  2. The profit's in the ante, according to the girl. (7)
  3. Reeking sailors can keep one from feeling faint. (8,5)
  4. Chorus section is just a trap to Al. (4,4)
  5. One crazy fool serves as a page! (5)
  7. Examiners are in favor of an unstable Serb. (7)
  8. Shoe parts make up the ultimate meal! (4,6)
  11. Autumnal daybreak in a painting by Paul Chabas. (9,4)
  13. Goad tipsy Dan with a pub-game piece? It's a repeating motif. (3,3,4)
  16. Playful jokester wants to condemn strange French soil. (8)
  18. Stupid fat lout is K.O.'d, but turns up at full speed. (3,4)
  20. Dawn is in the midst of a crazy nurse! (7)
  22. Approaches the sly snare. (5)
  23. Worry about a neck divider? (4)



# Dorm dwellers as tenants: screw city

(CPS)-Just sign here on the dotted line, the man with the key says as he points to the dorm contract. We'll take care of everything.

The unwitting student, who has no choice but to sign, rarely studies the contract to see what he's getting from the university in return for his rent. At most places, the university is a more temperamental landlord than the stereotypical student-cheating landlord, and is less bound by local tenant-landlord law.

In most cities, landlords and tenants must give each other written notice by a specified

time before evicting or moving. In many dorm contracts, the university reserves the right to move or evict the student at any time for almost any reason.

Many dormitory contracts absolve the university from any responsibility to student's belongings if a fire or flood results from poor maintenance of the building. So if a student loses his prized stereo to an electrical fire, he better hope his parent's insurance will cover it.

When the chair in the entryway of an apartment building is found ripped apart, the landlord doesn't bill his

tenants for the damage. Many universities, however, reserve the right to assess damages to public areas to all of the students who live in the area even if everyone was at the bar when it happened.

Most landlords do not have the right to enter a tenant's apartment without notice except for emergencies. Many universities reserve the right to enter a student's room for any purpose without giving notice.

All of these stipulations were written into the housing contract at the State University of New York (SUNY) at Buffalo. In

addition, the SUNY contract allowed housing officials to bill for damages that were found in a student's room without any hearings or explanations.

And worst of all, the SUNY contract made it impossible for a student to break the contract with the housing office even if the university failed to carry out its side of the contract in any way.

The SUNY Student State Association (SA), under the leadership of Student Affairs Director Steve Schwartz, complained to University housing officials that a new contract should be drawn up giving the student more tenant rights. The housing office "stalled" and

then rejected the students' "ideal" contract, Schwartz said. At which point the SA said they would be glad to meet the housing office in court.

"We think we have a very strong case," Schwartz said. "This case could have long-term precedents for other state schools and could pave the way for similar suits."

The case, however, never got to court. A lawyer for the state decided to try to negotiate with the SA lawyer out of court and the decision is still pending. Meanwhile, the Student Association of the State University is forming a statewide committee to investigate the whole question of housing contracts.

## BSU debaters fare well

While seasonal snowstorms had their own campus socked in, three Boise State students were sweating out competition in 80-degree weather at the University of Arizona debate tournament, held in Tucson, February 28 - March 1.

That tournament, one of the largest on the west coast, drew well over 500 participants from 47 schools representing Texas, Kansas, Colorado, New Mexico, Arizona, Wyoming, Montana, California, Oregon, Utah and Idaho.

The team of Rob Barraclough-Chris Schultheis, competing in off-topic debate, emerged from preliminary rounds with a 6-2 win-loss record to qualify for elimination rounds. They beat the University of Northern Colorado in octa-final competition (top 16 teams), and then defeated California State-Long Beach in quarter-finals (top 8 teams) to advance to the semi-final round (top 4 teams).

In that round, the Boise State team narrowly lost a 2-1 split decision and the chance to complete in the final round to a team from Brigham Young University, finishing tournament competition with third-place and an 8-3 overall record.

All squad members also advanced past preliminary rounds in individual events competition. Dan Peterson competed in the semi-final round for Declamation, as did Chris Schultheis in Impromptu Speaking, though neither advanced to the final round in those events.

Rob Barraclough, however, advanced to the final round in Declamation, finishing with high ratings although he did not place.

Miss Schultheis was also recognized as one of the top 10 speakers in off-topic debate.

Several BSU debate teams, including Barraclough-Schultheis, will compete again in off-topic debate at the University of Nevada-Reno tournament April 1-4.

Over 200 participants from 19 Northwest colleges made the Idaho State debate championship meet, held February 13-14,

the largest ever on the BSU campus.

That tournament, directed by BSU forensic head Jim Riley, drew schools from Washington, Oregon, Wyoming, Utah, and Montana to compete in the out-of-state division.

In-state competition for Idaho championship awards drew participants from Northwest Nazarene College, Lewis & Clark State College, College of Southern Idaho, Idaho State, and the University of Idaho, as well as from host institution Boise State.

The University of Idaho won its debate final to take the sweepstakes award for Idaho schools, with Northwest Nazarene taking second place in championship points.

Boise State senior Brad Jackson won third place in extemporaneous speaking in the in-state division.

Eastern Oregon College won the sweepstakes award for out-of-state schools, for best overall performance, with Weber State College of Utah winning that debate final.

Tournament director Riley

noted that cooperation from BSU administration and service personnel permitted the expanded tournament to run smoothly and on schedule.

He also commented, "The response we got from community people, and from staff and faculty on our own campus, was a real help to us in our tight judging situation. I had a number of those judges indicate to me later on, too, that they had really enjoyed the opportunity to judge collegiate forensics."

Judges drawn from the community were Richard Anderson, Larry Chase, Helen Farrer, Phyllis Fisher, Randall Fredericks, Lois Givens, Wanda Kay, Martha Oakes, Barbara Peterson, Chris Thomas, Lynn Thomas, and Bill Tway.

Volkswagen 4580 W. State St  
 Datsun Boise ID 83703  
 Volvo Leal V. Pedro, Owner  
 Toyota

**FOTI'S VOLKS SHOP**

10% off all parts to students...it adds up!  
 Call now for appt. 345-9582




**MICHAELSON**  
 for  
**TREASURER**

**EXPERIENCE** as current ASBSU Business Manager. He has a working knowledge of current business policies of the ASBSU departments. Thus, he can and is currently working on improving the accountability of ASBSU revenues.

**INTEGRITY** in handling ASBSU monies. Of 5 concerts put on so far, with total tickets sales of over \$54,000, there has been an overall cash shortage of only \$3. Compare this with cash shortages of up to \$30 for a single concert by previous Business Managers, who had responsibility for these concert revenues.

**CAPABILITY** from working with the current ASBSU Treasurer. Since Jerry was appointed as Business Manager in August, he has assisted the current Treasurer in setting up the ASBSU books, maintaining accurate, verifiable records and making monthly budget reports to the Senate. Being familiar with the duties of Treasurer, he makes no hollow campaign promises or conceals any phony issues concerning these duties. Instead, the attention should be focused on the real issues, such as complete funding for Phase II of the Science-Education Building and better utilization of our student money.

WRITE-IN



**Doug Jones**  
 for ASB PRESIDENT

Why must you write me in?  
 Because I'm a concerned student. Concerned about this institution and the role in which we partake within it. I am tired of candidates that are only concerned with our opinions—and "what they can do for us as students"—at election time. You can bet I'll be asking you if elected!

What are my qualifications?

- Member of ASB Financial Advisory Board
- Business Major - Accounting
- Member of Inter-Greek Council
- Member & President of Tau Kappa Epsilon

Inter-Greek Council of BSU presents

**University Night**

Every Monday night at  
**HAP'S 121 CLUB**  
 Chinden Blvd. in Garden City

7:30 .....  
**FREE BEER!**  
 ..... 8:30

Beer Chug Contest	9 pm
\$25 Dance Contest	11 pm
Good Times / Good Music	

**BRING YOUR BEST HAT AND WIN FREE DRINKS!**

## Ernie

[cont. from page 3] creature appears to be some sort of Messiah to these creatures and to the following cast of religious heirarchy. The only humans (?) on the program are preteen and teenage boys and girls (except for one darker complected female with a rather large torso). The leaders, probably bishops of some sort, are older, but somehow more immature than the rest of the group. They all wear costumes with their names on the front, but the most amazing thing about these people (?) is the fact that they have ears exactly the same as the animated rodent that appears at the beginning of the program. On occasion, the program will have a guest who will perform bits of magic, acrobatics or some other entertaining achievement for the people with the ears. After the guest is done, the entire group gathers around the performer and vocalizes a rather childish chant and places ears, the same as the rodents', on the performer. These people practice a philosophy which I believe is rather anti-hedonistic, it is taught to the parish in song and dance numbers. I could talk about this group further, but I find it hard to describe in symbols general enough for your and your readers' understandings.

I have seen in your society a rather large following of this rodent creature, and my question is: Would you estimate that the majority of the Earth's population is following the doctrine set down by this creature?

Thank you for the space in your column and I hope you will be able to answer my question.

Levsdork Yuzz

P.S.: Do you know anyone who might be able to get me a pair of those ears--they'd be great at Kocainian parties!

Dear Yuzz,

Welcome [?] to Earth. I will attempt to communicate to you in terms as gross and perverted as I can so that some of my readers will still be able to understand what I'm talking about.

In answer to your first question, Ronald Reagan is as described in an old Earth colloquialism, a shooting star. For a better description, look up Knute Rockne under films. You'll see what I mean.

You are mistaken about the National Football League. Those battles are only warm-up drills. The real battles take place in anti-trust courts.

Your question concerning the newscasters' stick--well, my editor won't let me answer that question in this column, but if you call 385-3401 and ask for Dave, I'm sure he'll be able to answer your questions.

The religious group is a rather Mickey Mouse [another Earth colloquialism] organization that is attempting to take over the Osmond family and turn them into reindeer. They in turn will use these reindeer to drop packages of green snow grown in Columbia all over the world. Their goal is to bring joy to the whole world.

If you go to the Boise City Zoo mens' bathroom on Thursdays at 4:30, you'll find a fellow named Maurice who will fix your ears and anything else at a very moderate price.

Confidential to Bob and Fred: Happy Birthday, Old Timers.

## Klein discussed dental health, budget

[continued from page 6]

the results would be tragic. The senators will need time to be adequately informed on this issue, and I don't think there's going to be enough time. I think perhaps it would be better if Nate (Nate Kim, ASBSU President) waited to see it through the next senate.

"The ASB budget is the most important issue that the student senate considers. It takes a lot of time and a lot of thought. I hope that some of this years senators will stay around long enough to help the new senate go through the budget since it is such an important job and is difficult to walk into cold.

"I think a lot of good ideas

came up in the senate this year, it is unfortunate that we didn't follow through on more of them.

But the term goes so fast and one year is not a very long time to institute any sort of change or program development. Perhaps a two year term for senators would be better.

"I think the biggest question anyone involved in student government must ask is 'What kind of authority do we have?' I'm still not sure after a year on the senate. There were many frustrations and shortcomings this year but I feel we did make an honest effort to do our best. Hopefully next year's senate can follow through with what we began."

# Radio Shack

## SAVE \$119.85...REALISTIC STEREO COMPONENT SYSTEM!

- Realistic STA-82 AM-FM Stereo Receiver with Auto-Magic<sup>®</sup> FM Tuning
- Two Realistic Mini-10 Walnut Veneer Bookshelf Speaker Systems
- Realistic LAB-34 Changer with Base and \$17.95 Value Cartridge

Components Sold Separately . . . 479.80



### 275 North Orchard



Most items also available at Radio Shack Dealers. Look for this sign in your neighborhood.

PRICES MAY VARY AT INDIVIDUAL STORES

Big Discounts

Classical  
Jazz  
& Pop  
Record Sale

Beginning Today

Your Campus Store



8 am - 5 pm  
Monday thru Friday  
Main floor SUB  
305-1550



collegiate  
**games**

## Big Sky All-Conference Basketball team named

Jimmie Watts of Weber State became the second person in Big Sky Conference history to be named to the All-Conference basketball team three times, the league said Tuesday in releasing the 1976 team.

Other first team members are Idaho State's Steve Hayes and Greg Griffin; Tom DeBerry of Northern Arizona University; Michael Ray Richardson, Montana; and Watts.

Second team members are Pat Hoke and Steve Connor, Boise State; Daryl Ross and Rusty Smith, Montana State; Al DeWitt, Weber State; and Jim Grady, Gonzaga.

Watts, Hayes and DeBerry were voted on the first team unanimously by the eight Big Sky basketball coaches. With 14 voting points maximum, Richardson received 12 points and Griffin nine points.

## Keglers do it in the Games Room

The Boise State University Bowling Teams are organized through the bowling leagues in the Student Union Games Area. Team membership is open to all full-time students with a 2.00 GPA. Team members must participate in the Games Area bowling leagues. Bowling is recognized on campus as a varsity sport. Men and women can earn their varsity letter by competing in 60% of the tournaments during the academic year. A roll-off is held prior to each tournament. Eligible league members bowl 25 games with the top five men scores and the top five women's scores making the team for the upcoming tournament. All of the tournaments are held on a scratch basis, no handicap used. Scholarships are available from the Boise City Men's and Women's Bowling Associations.

Anyone wishing addition information may contact Greg Hampton in the Games Area.

Members who have made the team for tournaments this year:

**MEN:** Bob Harvey, Pat Pethel, Bruce Belliston, Jim Wolfe, Mike Hofferber, Wade Nelson, Frank Morris, Doug Sirucek, Jerry Black, Ron Arndt.

**WOMEN:** Chris Ureichuck, Shawna Perkins, Suzanne Larsen, Nancy Mathews, Brenda Evans, Mary Shafer.

The varsity bowling teams are funded by the Recreation Board.

The individual bowlers pay a portion of their own expenses on each trip. Boise State has produced many tournament champions in the past year. Last year Shawna Perkins and Stu Wilcox represented Boise State in the national all events bowling championships after winning first place all events in our regional tournament. We have won many awards in the past and hope to win many more in the future. All full-time students are encouraged to join the Games Area bowling leagues and try for a spot on the Varsity Bowling Teams.

## Broncos to NCAA playoffs

In the gym of Weber State College on Friday night following the Northern Arizona, Weber State game (that game ended WSC 63, NAU 58) Boise State came out on the floor to warm up for their contest with

Idaho State.

In the first few minutes of the game Boise State led by as many as eight points but failed to maintain that led and entered the locker room at the half behind 40-35.

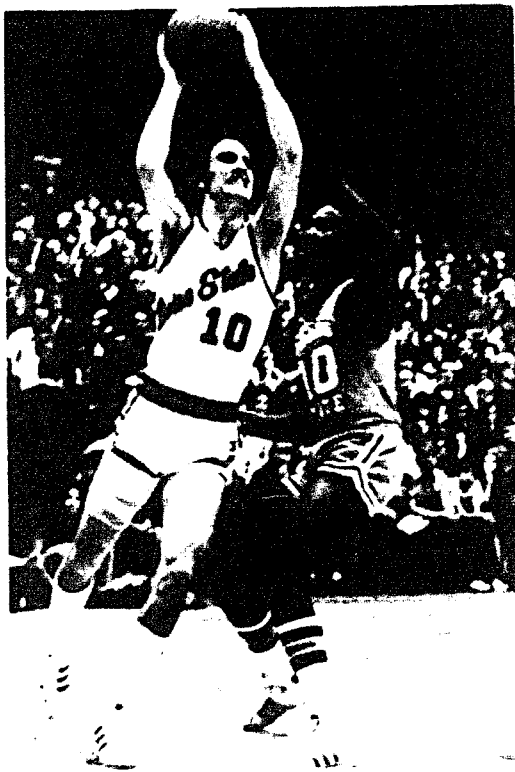
With the beginning of the second half most of the 4,411 fans were looking for ISU to walk away with the game. To the amusement of the crowd the second half didn't go that way at all.

Bronco head coach Bus Connor directed to a last minute comeback to win it 93-81.

This win put BSU up against Weber the following night. For a long while it looked as though the championship game was going to go to Weber. It looked that way to some but not the broncos, BSU battled back and the score at the half was BSU 32, WSC 27.

The second half could have been anybody's game, the lead went back and forth half a dozen times before the final buzzer. When the game ended it was 60-60. The game moved into overtime and near the end of the first overtime the score was 66-66. The last minute shot by Bronco Steve Connor failed forcing the game into a second overtime. At this point the Broncos went to town and won the final Big Sky game of the year 77-70.

The Broncos now will travel to Eugene, Oregon where they will play the University of Nevada Las Vegas for the NCAA Regionals.



Steve Connor driving for two points. . .

**Bronco Days '76 are coming**

Olympia Brewing Company, Olympia, Washington "OLY"®

**I**n a world buffeted by change, consider the unchanging church key. On a fateful day in October, 1919, Mac C. Rosenfeld received Patent #1,260,321 for it. A gleaming symphony of spring steel, the church key was used by three generations of thirsty collegiate Oly drinkers. Not until the twist-top was its utility questioned, although the discriminating Oly drinker will always keep one on hand for fav-Stubbies and Oldtime bottles.

The design of the church key hasn't changed because it was made with skill, ingenuity and simplicity. A great beer doesn't change for many of the same reasons. If it's done right going in, you'll have an unchanging standard of quality. Some things never change. Olympia never will.

**OLYMPIA**  
Beer doesn't get any better.

## BOISE ROADSTER SHOW

Western Idaho Fairgrounds

**MARCH 12, 13 AND 14**

OUTSTANDING ENTERTAINMENT • 3 BIG DAYS

SEE OVER 2 MILLION DOLLARS WORTH OF THE  
FINEST CREATIONS ON WHEELS

**Show Hours**  
Friday 5 PM to 11 PM — SAT. 12 PM to 11 PM  
Sunday 12 P.M. to 10 P.M.  
GEN ADM. \$3.00 — CHILD \$1.00 (6 to 12)  
**Phone 344-0411**  
ISCA/NSRA Pacific Div. Championship Car Show

# Coed cagers take 1st in tourney

by Johnna Reeves

The Boise State women's basketball team won the Eastern Area A basketball tournament in Cheney, Washington this weekend and now advance to the Northwest Regional Tournament in Portland.

Thursday, the broncos met host school, Eastern Washington, downing them 56-32. Boise State was 1 point behind at half time but battled back defensively in the second half, holding Eastern to 8 points.

Elaine Elliott and JoAnn Burrell led the broncos offensive effort with 14 points apiece, while Elaine Godfrey dropped in 13. Burrell grabbed 13 rebounds and Godfrey had 7.

Friday the broncos slipped by Washington State 38-34. Boise State got a slow start in the first half with a 15-15 tie at intermission, but improved their performance in the second half to lead by as much as 15 points before WSU narrowed the gap.

Elliott scored 10 points in the second half to end the game with 11. Bette Will had 9 points and Kendra Falen added 8.

The tournament finals saw BSU matched with Montana State. The broncos won the game 52-41. Boise State held a 25-22 lead at halftime. In the second half the broncos took advantage of MSU's foul trouble

to pull ahead, securing their victory and the Eastern Area Championship.

Burrell, coming off an ankle injury from the previous evening, scored 16 points. Elliott had 11 points, with Falen and Godfrey adding 8 each. Godfrey grabbed 11 rebounds while Falen and Vicki Lawson had 6 apiece.

The win moves BSU's season record to 13-5.

Boise State will meet the University of Alaska Thursday, in the opening game of the Northwest Regional Tournament. The tournament champion will gain a berth in the National Finals in Philadelphia, Pennsylvania.

## BYU wins 1st in gym meet

The BYU gymnasts racked up 89.25 points to place first in the Boise State Invitational Gymnastics Meet, but the BSU women put together their best performance in their history scoring 82.45 points for second position. Utah State was third with 70.75 team points.

BYU's Linda Schader took first all around title with a total of 29.6 points. Schader took first in vaulting, second on the floor exercises and third on the balance beam.

Boise State's Cindy Woodworth took first on the uneven parallel bars with a high 8.0 mark. Jerrie Seivers scored 6.65 on the bars for third.

The BSU gymnasts will travel to Forrest Grove, Oregon Friday to compete in the Northwest Regional Gymnastics meet.

# Council reports on 70th annual NCAA Convention

Reprinted from the NCAA News, Feb. 1976. [Continued from last week.]

### Legal

"Mirroring our society at large, intercollegiate athletics continues to attract more interest, more competitors, more institutions which desire to sponsor intercollegiate programs and-- as a result of all this--our athletic community becomes more complicated.

"One development which prompts pessimism, however, is the continued tendency of some member institutions, some staff members of institutions and some athletic representatives of member institutions to frustrate the application of the NCAA rules by testing their validity through state and Federal court proceedings. Not only does this activity drain a substantial amount of money from NCAA funds--money which could be used for more constructive and useful purposes--it also creates an unequal application of rules which is contrary to the fundamental reason a member institution joins a voluntary association.

"In all of the multiple court tests of NCAA rules and procedures, there has been only one significant decision against the NCAA. This had to do with the judgement that the alien age rule of Bylaw 4 was discriminatory and should be revised.

"An institution, a staff member or a booster secures a temporary restraining order or a preliminary injunction which enables the institution to utilize the services of a student-athlete who otherwise would be ineligible to compete. It is a recognized fact in our judiciary system that frequently the judge of the area is inclined to rule in favor of the athlete or the institution in his immediate

jurisdiction as opposed to some national governing body far removed. And for a part or all of a season, a student-athlete who should be ineligible is permitted to compete to the disadvantage of institutions against which his college is competing.

"During the past fall, we have seen coaches of member institutions attempt to frustrate the decisions of NCAA Conventions by attempting to suspend the rules that the voting delegates of our members have decided to impose. It is interesting that in some of these instances, the coaches' institutions did not argue the particular rule in question on the Convention floor.

"Under court proceedings at the present time, it would be possible for a college with an ineligible player to win a conference championship and compete in the NCAA tournament before the matter could be finally adjudicated in the courts."

### Reorganization

The motivation for that reorganization which took place in Chicago in August, 1973 was to create divisions whereby institutions of like persuasion and programs could achieve a national legislative forum to deal with pressing recruiting and economic issues which could only be effectively resolved at the national level. At the time the Reorganization Committee recommended that plan it recognized--as did the Council--that additional refinements would inevitably be necessary.

"Continued study of the athletic programs of the membership dramatizes the fact that in the sport of football, more than three divisions are needed. The sport is unique because the number of competitors and personnel in the coaching and administration of football results in a wide variance in the financial commitments which

institutions wish to make to intercollegiate football. These wide ranging commitments result in programs which seem to the Council clearly to fall into four divisions rather than three.

"In Division II, for example, there is a sharp divergence of view as to the number of financial aid commitments which should be permitted in football. There is a group which feels that approximately 15 more financial aid commitments (that is, 60 or more) should be available. A goodly number of other Division II members believe the number should be in the low forties. A comparable comparison can be made in Division I where the respective numbers are higher, but the difference is even greater.

"In Division I there are a series of bowl games available for those institutions with larger programs, but there is no postseason opportunity for those in Division I with more modest programs. Whereas, the Television Plan provides for certain exposures for Division II and III institutions, those with more modest programs in Division I have limited opportunity to gain comparable exposure.

### Title IX

A number of committees of the Association have worked diligently to see to it that the Title IX regulations of HEW are not destructive to the financial welfare of existing intercollegiate programs--programs which in many instances are being asked to assume the additional costs of helping the development of women's programs. These efforts, in the main, have been unsuccessful. One of the disturbing aspects of this exercise has been the tendency of HEW to overreach its authority based upon the laws of Congress. We have noted the comments of an increasing number of presidents of NCAA member institutions protesting HEW directives and orders.

Possible legislative or legal challenge to HEW's legislative presumptuousness certainly are possible remedies. The Council is continuing to monitor HEW's interpretations and enforcement plans and, depending upon developments, may seek Federal legislative or judicial relief, or conclude that no further action is appropriate.

"The National Youth Sports Program experienced a seventh successful year in 1975. This year's program included 98 institutions in 72 cities and 36 states, with an enrollment of approximately 30,000 participants. The cost of the program for 1975 was just under six million dollars."

Your Council remains dedicated to a program of full information and promotion of college athletics, and on that premise directs the Association's ongoing campaign to inform the public of the Association's policies, goals and activities.

**CO-ED SOFTBALL WILL START RIGHT AFTER SPRING BREAK! SIGN YOUR TEAM UP NOW AT THE INTRAMURAL OFFICE [5 MEN, 5 WOMEN PER TEAM].**

BSU Department of Theatre Arts will hold auditions for a major production

### The Madwoman of Chaillot

by Jean Giraudoux

March 9, 10 & 11  
March 9 & 11

3:00 p.m.  
7:00 p.m.

### Subal Theatre

Parts for almost forty actors and actresses  
No experience necessary  
Scripts available in theatre department office

For further information call 385-2957

05/01/76

The Raft Race is coming!!

### WANTED

Mature Single Adults with Christian orientation. All we ask is that you encounter yourself, share with others and grow together. We do not pretend to offer all the answers...only the questions--and the tools of discovery. Join us in our "SEARCH FOR CHRISTIAN MATURITY" on March 12, 13, and 14. It's happening for you and with you along with an experienced team of clergy and laymen who are concerned.

Search is the first step in finding....

"Search" Committee  
7005 W. Franklin Rd.  
Boise ID 83705  
376-0232

# Bronco Hat

New Gigggle Hour Time: Tues 7-9



Twofers Friday 4-7

Beth & Cinde - Tonight thru Wednesday  
Wilson & Fairchild - March 11 thru 20

# Intramural update

## MUSICWORKS

**Mens' Basketball**

**Tuesday, March 2**

BF&S 40 Scrogg Ups 38  
 Midgets 42 Bufferellas 40  
 Gunners 58 Rats 52  
 Polocks 1 No. Idaho 0 (forfeit)  
 Swifter 72 Boilermakers 64  
 Wack-a-dooos 51 Old Timers 46

**Wed., March 3 - Playoffs**

Swifter 45 BF&S 32  
 Gunners 68 Kappa Sigma 58

**Thu., March 4 - Championship**

Swifter 54 Gunners 48

**Swifter:**

Ron Adamson Steve May  
 Bill Frazier Monte Miller  
 Dave Darrington Jack Walker  
 Dirk Jackson

**Womens' Basketball**

**Championship**

H. Hookers 30 Coed Cagers 16

**Happy Hookers:**

Johna Reeves Patti Crepps  
 Polly Hart Kathy Anderson  
 Linda Booth Nancy Trummel  
 JoAnne Dillion Pam Mason

**Co-ed Volleyball**

**Monday, March 1**

BFD over Monkas 15-7, 15-6  
 Kahunas over SIMS by forfeit  
 Tough Tomatoes over Easy  
 Sliders by forfeit

**Monday, March 8**

7:00 SIMS vs. Monkas  
 BFD vs. Tough Tomatoes  
 Easy Sliders vs. Kahuna

**Standings:**

BFD 4-0  
 Tough Tomatoes 4-0  
 Monkas 2-2  
 Easy Sliders 1-3  
 Kahuna 1-3  
 SIMS 0-4

**NEW RELEASE FOLLIES...**  
 Have you ever wondered why there's often a long delay between hearing about a new album and actually seeing it in the store? Of course the reasons can vary, but the upcoming Led Zeppelin LP may illustrate perfectly the hassles involved. It seems each of the group's four members must individually approve the album, cover art, advertising, liner notes, credits, the individual songs—everything. One little fit of artistic temperament can hold up the release date for weeks or longer. Since this is typical of many artist/label contracts, delays are all but inevitable. The bigger the egos, the bigger the problems.

**GRAB BAG...**The new album Carly Simon is recording will be minus her long-time producer Richard Perry. No word yet on who's producing...According to Billboard, Keith Moon might take issue with TWA's ads about on-time arrivals, at least where baggage is concerned, since they lost his trunk containing 16 gold and 4 platinum Who albums somewhere between London and L.A....Just read about a new 13,000 square foot record and tape store in New York City (the world's largest?). We like to brag a little about THE MUSICWORKS being big, but that's ridiculous...Happily, record and tape prices have been relatively stable for the past 18 months or so, but a major label is making noises about price increases later this year. If it happens, don't say we didn't warn you.

**ALBUM NEWS...**Linda Ronstadt starts work on a new LP in a few weeks...A new Eagles album should be out this summer. Meanwhile, the phenomenal sales of their "Greatest Hits" package should keep them from starving...More imminent new releases include albums by The Doobie Bros., Jess Colin Young, Robin Trower, Donna Fargo, and Joe Cocker...A new America set and the second album by Grammy Award winner Natalie Cole will be out in April...Mike Pinder of The Moody Blues is at work on his first solo project, while Justin Hayward and John Lodge are finishing the followup to their "Blue Jays" album.

**TV SHOWS** of interest to record fans include 3 from PBS this month...a "Soundstage" hour with Judy Collins, Max Morath's "The Ragtime Years", and a special on the "Golden Years of Radio".

**READ OUR WALLS...**We have interesting articles this week about the reemergence of Laura Nyro and Janis Ian, clipped from the New York Times and Los Angeles Times.

**CLASSICAL NOTES...**You've come a long way, "Zubie-baby". Virtually unknown when hired as Music Director of the Los Angeles Philharmonic, Zubin Mehta rebuilt "his" orchestra into one of the country's best, with numerous recordings. Now he's taking the job he said repeatedly he didn't want, becoming conductor of the New York Philharmonic in 2 years, when Pierre Boulez departs...Our classical stock at THE MUSICWORKS said to be the area's largest by far, has expanded again with the arrival of 200 plus Columbia albums this week. Just keep buying them and we'll keep adding more selection...Collectors say that DEUTSCHE GRAMMOPHON recordings are unsurpassed for quality. This week we're offering our entire D.G. stock at just \$4.88 per disc (prepaid special orders included, as usual).

**POSTSCRIPT:** We accept plastic money (Master Charge, BankAmericard).

**THE MUSICWORKS**  
 4212 Overland Rd.  
 (Corner of Roosevelt  
 1/2 mile east of Orchard)  
 Boise - 345-9730  
 open 7 days/6 evenings

OPEN WEEKDAYS  
 9 AM TO 9 PM  
 OPEN SUNDAYS  
 10 AM TO 6 PM

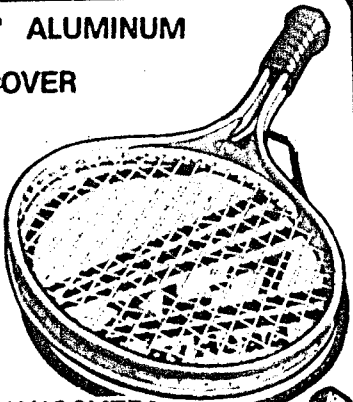


## TOTAL TENNIS HEADQUARTERS

### HEAD "XL-7" ALUMINUM TENNIS RACKET W/COVER

A great aluminum racket with one-piece no-weld construction for longer life. Top grain cowhide grip & waterproof cover.

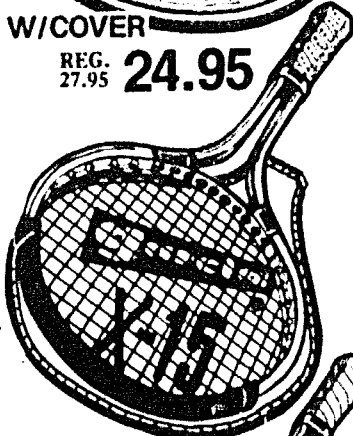
REG. TO 34.95 44.50



### Garcia "X-15" W/COVER

Tough resilient molybdeum steel frame delivers with tremendous impact.

REG. 27.95 24.95



### GARCIA "GS88" TENNIS RACKET

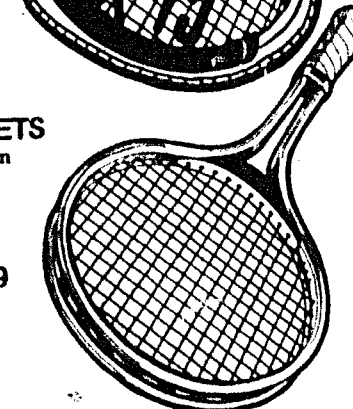
Made from quality select hardwood. Heavily reinforced throat & shoulders. Top grade leather grip.

## Wilson

**STEEL TENNIS RACKETS**  
 1st. quality metal rackets at an unbelievable low price.

**T2000 UNSTRUNG**  
 made to sell for 46.00 26.99

**T3000 UNSTRUNG**  
 made to sell for 52.00 29.99



## Wilson

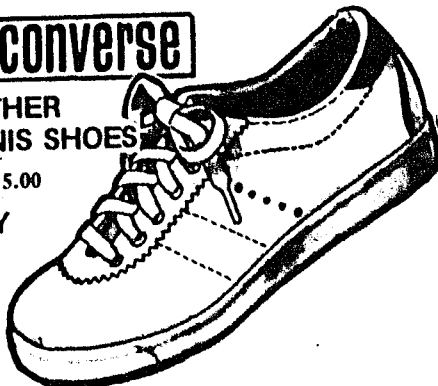
**TENNIS SHIRTS AND SHORTS NOW ONLY 4.88**

Many styles to choose from including the classic Jack Kramer models. 100% cotton, cotton/polyester blends & 100% polyester in white & colors.

## ★ Converse

**LEATHER TENNIS SHOES**

REG. 15.00 ONLY 8.99



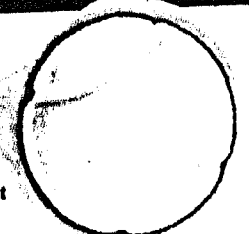
Urethane coated top quality leather. Cushion crepe wedge & lip arch. Padded collar & light-weight construction. In white.

### Penn "CENTRE COURT" TENNIS BALLS 1.99

Play-rated Penn Centre Court balls offer the right ball for every court and every player.

USTLA-approved for official size, weight & rebound. Three to a hermetically-sealed, easy-open can.

REG. 2.99



IN BOISE  
 5804 FAIRVIEW AVE.  
 IN NAMPA  
 1031 NAMPA CALDWELL BLVD.

