

4-14-1975

## Arbiter, April 14

Associated Students of Boise State University

---

Although this file was scanned from the highest-quality microfilm held by Boise State University, it reveals the limitations of the source microfilm. It is possible to perform a text search of much of this material; however, there are sections where the source microfilm was too faint or unreadable to allow for text scanning. For assistance with this collection of student newspapers, please contact Special Collections and Archives at [archives@boisestate.edu](mailto:archives@boisestate.edu).

# amortem

ISSUE 28

BOISE STATE UNIVERSITY

APRIL 14, 1975

..HOW CAN YOU REFUSE  
EVERY APPOINTMENT  
BY ME? YOU CLOWNS  
DONT EVEN KNOW W

The Heartling  
Senate

"We never Welsh  
on our new  
appointments."

## SENATE CHAMBERS

... LOOK,  
TURKEY,  
TAKE THESE  
APPOINTMENTS  
OF YOURS AND  
PLACE THEM  
BETWEEN THUMB  
AND FOREFINGER  
...

See page 5

GRADY 75

# Exercise Humanity, Join the Hike Bike

Ann is ten. She likes to play in the park, play with her dolls, swim and bowl. Sound like a normal child? Well, she is, in all but one respect. She is mentally retarded.

She is just one of the hundreds of mentally retarded persons in Idaho who is dependent upon the contribution of Idahoans' compassionate understanding. One of the ways you can show your compassion is by participating in the Hike Bike for the mentally retarded. The Hike Bike will be held April 26 at 9:00 a.m. at Capital High School. The Hike will be 20 miles long.

The Hike Bike is similar in nature to the Walk-a-Thon wherein a sponsor pays so much money for every mile you ride or walk. With the completion of the Hike, the money donated will be used for social and recreational activities for mentally retarded children and adults in Idaho.

With the money donated you will be giving these people chances to go camping, see the circus, participate in dances and celebrate their birthdays. Don't allow yourself to fall into the "village idiot syndrome".

The syndrome is one that is all too common among people who have not taken the opportunity to get to know a mentally retarded person. Stereotypes such as Steinbeck's Lenny in *Of Mice and Men*, *The Hunchback of Notre Dame* and numerous portrayals on TV recently all tend to reinforce the conception that the retarded person is someone to fear, laugh at or condemn. By allowing yourself to fall into that conception of the retarded, the role of the village idiot is reversed.

We no longer live in the middle ages where the mentally retarded person was believed to be possessed by either Satan or God. We should no longer fear fellow human beings who because of brain damage or non-development cannot do or learn the same things we can.

For more information, call 345-8190.

BB & VY

# Editor takes leave

To the students and faculty of Boise State University:

To end all the mysteries that have shrouded my timely departure would indeed be anti-climactic, especially when held in context with my performance this year as the "rags" editor. All I can say is that it is time to accept whatever befalls an editor emeritus and take my leave with as little fanfare as is humanly possible.

Each and everyone of you have made this year something I'll never forget...try as I might. To the staff that has so diligently fought me and my ideas this year, may I say it was a privilege to know that it has indeed been worthwhile.

To the ASBSU Government and selected administrative members, may I express my sincerest regards and admiration for the tireless hours you have spent showing this little drama major the games empire builders play...it has indeed been a pleasure to learn the rules and how to graciously bend-over and receive my rewards.

To the students of this university, especially those members of radical factions and mavericks-at-large, there is an old proverb that says, "Do not judge a man or what he does, until you have stood and walked in his shoes." Remember that, my friends, when next you start lopping heads and demanding explanations.

I leave this office with little regret, and in time my blood pressure, my nerves and my ulcers will be back to normal; but, and I say this with all the honesty and sincerity I can muster, you will never have another paper like the one you've had this year...nor a group of people so willing to work for the betterment of this school and the student's situation.

John W. Elliott  
Editor, Emeritus

# Former editor castigated

Editor, the ARBITER

Mr. John Elliott, Editor Emeritus

I wish to refute your using your position as editor of the "School" newspaper to support your position of "on campus" alcoholic consumption. If you are speaking for yourself, then please do so without the special personal titles and special paper layouts. It appeared you were presenting an official ASBSU proposal in asking for the resignation of the State Board. Do not for a minute suppose you can speak for me or many other students on this question. I am not certain you can come up with a majority on your side of the question.

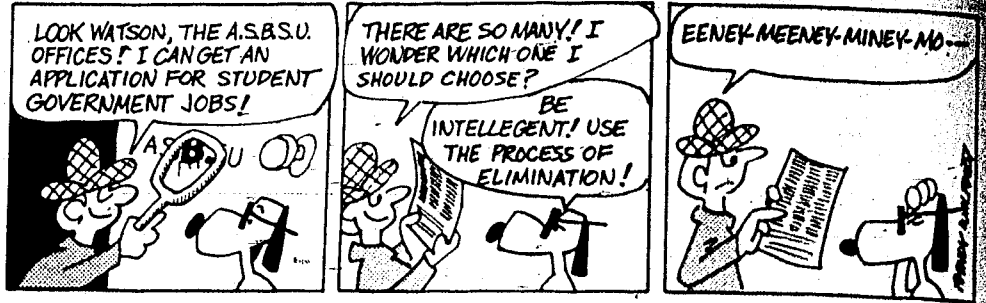
You have done exactly as Mr. K. Christensen did in using his title and position to speak for the student body without consulting them. He was severely criticized and required to publicly acknowledge his mistake.

You covered yourself fairly well with your wording of, "this student" and this "editor". In the wording you are speaking for yourself, but in the format and style, you seem to be speaking in behalf

of the student body. If you were not, then I do apologize.

I for one am appalled at the behavior of a good percentage of the so-called adult students. Alcohol consumption at the games is beyond the fun stage. Drunks falling all over the stands, a student so wiped out by half time he was unable to even sit up, students pop tabs and spew beer over everyone close. Students intoxicated to the point they loudly scream obscenities and filthy language at the opposing team, our team, cheerleaders and at everyone in general. They care not if women and little children are sitting right next to them. Of course this may be their behavior even when sober.

Then they require a "potty" or restocking trip every 15 minutes or so if they can still navigate. If not they lean or fall all over you on their way to the bottom of the stadium. Few seem to care about the team or school spirit. Perhaps the paying customers on the far side act the same way, but I have never sat on that side so I cannot say. I do know I am tired of the slobbistic attitude on the student side.  
Gary R. Martin



# Huck's Realm

## The handling of non-tenured faculty

And when the moon was full, the corporate-inclined Sages rose from beneath their rocks and met in session to discuss the handling of non-tenured faculty. Boil, boil, the pot bubbled and emerging from the impurities came bubble, bubble, double trouble. All gathered around and gazed upon a precise definition of QUALITY EDUCATION, printed, of course, in transparent ink for sole interpretation by the Appointed Disseminators.

Following close behind this dazzling document appeared a new HEX to solve problems of non-acceptance, a tragedy Shakespeare-type entitled: *How to Maintain the Status Quo and Force Troublesome Non-Tenured Faculty and Indirectly, Precocious Students Into Line Or Out Of State.* And the Sages

nodded their heads in approval and chanted, "So, it is written, So, it is done."

And thus a new cloud descended upon the campuses to make those in error aware of the tremendous power held by the Moonlight Policy Makers. Asserting their dominion over Heaven, Darkness and Idaho classrooms, the Bored Ones instructed those instructors who had not yet attained most Favored status through good behavior to beware. For it is now written, those who err can be zapped without a hearing or disclosure of reason. Within the dictate came forth a stress upon those who arrive from out of state; those who have reached professor status elsewhere, in order to conform to the Goodness and Mercy of the Sages, must begin in the bottom anew as

Non-Tenured Faculty. Oh, the unharbored wisdom and representation of the masses.

Thus in the future, the Learned Sages will stress the importance of going to college, earning the degree and obtaining the job, not the knowledge of yourself or your potential. In this manner, the Prince of Darkness may rule forever in a system of educational progress which has reached acceptance on a corporate level. The essence of which is to obtain the degree for a job, not to analyze your plight. Oh, Thank you, Sages of Education, for your benevolent decision which has once again gained the gratitude of each and every one of us who walked out of your cave a long time ago. By the way, that path is still there.

# Community citizens disfavor plant

Editor, the ARBITER

What has developed lately concerning Idaho Power's proposed coal-fire plant? We attended a televised debate in November and were more impressed with the arguments against the plant than those for it. It seems that the plant will necessitate stripmining of Wyoming, add air pollution to the Boise Valley, and encourage more folks to move to Boise. Mr. Bruce (an Idaho Power Representative) repeatedly told young questioners from the audience that when they grow up, they will need more power, and when they get married and raise a family, they will use even more power. Instead, we feel that we should be constantly examining our lives for ways of cutting down power usage and that these concepts of thrift should be taught in the schools. Mr. Bruce also based quite a few of his

arguments for the power plant upon the fact that there has already been a lot of money invested and this would have been spent in vain if the plant was not built. A rather weak argument, it seemed to us, in view of the concerns at stake. We could cut down our energy consumption to an amazing extent (as indicated during last winter's fuel shortage) and still lead a high quality existence. Do we really need self-defrosting refrigerators that keep us overly supplied with ice cubes and use an incredible amount of electricity? What about electric can openers, tooth brushes, knives - electric clocks in each room which run all year whether anyone is home or not? Not everyone needs electric garage door openers.

In fact, does anyone? And disposable plastic cigarette lighters - indeed! We should be ashamed. We have become fat - even piggish

in our covetance of possessions and money. Actually, it can be very satisfying to do things for oneself; to build your own building well and to last, have a vegetable garden, or play a musical instrument instead of listening to the radio constantly.

In short, we feel that aesthetic, moral, and health objections far outweigh the profits and jobs to be gained by constructing a new power plant in the valley; this plant is likely to impair the quality of our lives and we hope that it will not become a reality.

Members of the Community  
Kathleen A. McDonald  
N. Z. Lagattuta  
Nungio Lagattuto  
Michael Laurie  
Marie Braaten  
Vera Jonasson  
Lucille Bradley  
Roger Phillip

# Kim reports on State Board

Editor, the ARBITER

On April 3-4 the State Board of Education met to discuss the General Fund Appropriations Budget. The total of \$12,030,000 was allocated to BSU for the Fiscal Year 1976.

Twenty faculty positions will be established for next year. We were also awarded \$227,000 in "new money" for 25 graduate-instructional assistants positions to be open to BSU students. This amount also includes research activities and Sabbatical leave to improve educational instruction at BSU. \$86,000 was set aside to develop a masters program in Secondary Education, another step in updating the total educational program. Women's Intercollegiate Athletics was given \$10,000 to go along with the Athletic Department fund of \$15,000. The total increase from Fiscal Year 1975 was \$1,793,444 or an 11.7 per cent increase. In comparison with the other Idaho schools, ISU increased 11.0 per cent and the U of I 11.3 per cent. The equity adjustments for

BSU has increased tremendously and will continue to if the students continue to voice their opinions to their legislators as to the need of increasing higher educational opportunities.

I wish to thank the legislators, State Board members and the BSU Administration in obtaining for the

students, new and improved programs.

As a point of information, Mrs. Janet Hay of Nampa, was elected the new State Board President and that Clint Hoopes of Rexburg was sworn in as a new member.

Nate Kim  
President ASBSU

The ARBITER is published weekly by the Associated Students of Boise State University. The offices of the ARBITER are located on the second floor of the Student Union Building, Boise State University, 1910 College Blvd., Boise, Idaho, 83725.

Articles and letters to the editor must be received prior to 5:00 p.m. Thursday before publication. All articles and letters to the editor must be typewritten and bear a legible signature.

Asst. Editor ..... Buck DeMotte  
Bus. Manager ..... Scott Harmon

Lay-out editor ..... Barb Bridwell  
News Editor ..... Rick Christian

Feature Editor ..... Rich Durrington  
Sports Editor ..... Melinda Scharf  
Copy Reader ..... Gwyn Harms  
Artist ..... Grady Meyers

Lay-out asst. .... Leah Cothorn  
Jane Holbrook

Reporters ..... Jo Elliott-Blakeslee  
Tim Ritter  
Mike Conroy  
Vicki Yee  
Columnists ..... Huck Hovey  
Cartoonists ..... Davis & Schimpf  
Circulation ..... Russ Waegelin  
Staff Asst. .... Susan Smith

**IF YOU LISTEN TO KYME ...  
YOU CAN HAVE A KYME - CARD**



**MR. AND MRS. JERRY PRINZING RECEIVED A WEEKEND FOR TWO AT THE  
RODEWAY INN. LAST WEEKEND AND EVERY WEEKEND... SOME LUCKY  
KYME-CARD HOLDER WILL BE CHOSEN FOR THIS RODEWAY "WEEKEND AWAY  
FROM IT ALL"...FROM KYME.**

**CALL OR WRITE FOR YOUR FREE KYME CARD.**

**P.O. BOX 1619 BOISE 83701  
376-0740**

**QUALIFICATIONS: 18 OR OVER, A KYME LISTENER.**

# 'The Great Lunch' is reality

Hungry people of Boise unite! The Great Lunch is here!

The Great Lunch is a benefit for the Easter Seal Foundation and will be held at noon Saturday, April 19, in the BSU football stadium.

"There are a lot of skeptics out there," said Randy Birkinbine, Special Events Chairman, "but the Great Lunch will definitely be a reality."

The Great Lunch will be a giant picnic in the truest sense, according to Birkinbine. The menu at the Lunch will feature a 15 foot high Neopolitan flavored ice cream cone, and a 444 foot 5 inch long sandwich, filled with cold cuts, lettuce, salad dressing, and tomatoes. A Coke stand will also be there. The sandwich and ice cream cone are both record breaking events. They will be in the Guinness

Book of World Records, as they are the largest sandwich and ice cream cone which has ever been made!

"Other colleges have had sandwiches which were as long as this one, but they were several loaves put together; sectional," stated Randy Birkinbine, "but this sandwich is a complete, whole loaf." This sandwich is a history making project."

A tremendous amount of time, energy, and financial expense has been combined to make the Great Lunch a reality. All the people who donated towards this event will be listed on a program available at the Lunch.

The charge for attending the Great Lunch will be 50 cents for students, a dollar for the general public, and for those who just want to look at the food without feeding, the charge will be 25 cents. Tickets are available in the Student Information Booth in the Student

Union Building. The proceeds will go directly to the Easter Seal Foundation. The main course, the sandwich, has been one of the most difficult problems in completing the Lunch. A special oven has been constructed to bake the enormous bread loaf. The loaf will be made of San Francisco sourdough. The oven is equipped with special accouterments so that a continuous loaf will be baked. The sandwich will stretch from the flagpole in the stadium to the varsity center.

The food has met Health Department standards. Individual servings of the food will be served by BSU hostesses.

The Great Lunch could possibly be postponed again because of weather, but with all the work that has been put into it, there is no way that the event cannot happen. Background music will be provided by Tarwater. See you all at The Great Lunch!



Boise State University professor Denis Ochi honors, from left, Ray Lara, Rupert, Charles Stahn, Brunson, and Kennette Elliot, Nampa, for their top entries in the annual BSU sponsored High School Art Competition. Lara's cartoon work took the top award out of the over 80 works of art submitted by seniors from 45 Idaho high schools. (News Bureau Photo)

**BOISE BLUE HAS IT.**  
Idaho's largest selection of art supplies, engineering, drafting and craft supplies.

**HYPLAR AND LIQUITEX ACRYLICS**

**BOISE BLUE PRINT**  
817 Bennett Pl., 348-8884  
Open 9:30 am to 6:30 pm Mon. thru Sat.

## Tri-Delts give scholarships

The Beta Eta Chapter of Delta Delta Delta is pleased to announce their annual scholarship competition. All full-time women students are eligible to apply. Applicants

should be well-qualified students involved in extracurricular campus and community activities, and having financial need. This

scholarship will be used for registration fees at Boise State University during the fall semester 1975. The application blanks may be picked up in Christa Bax's office in the Programs Board, second floor of the SUB, or at the Tri-Delta house, 1010 Lincoln. The deadline for submitting applications is May 7.

## Governor's internship deadline nears

The Governor's Summer Intern Program will be held in Boise this year from June 9 to August 6, 1975. This program is open to all college students who are Idaho residents, and gives them the opportunity to work with varied projects in executive branch agencies. Twelve interns will be chosen for the program and will be individually placed in an agency for project work. The interns will complete 40-hour weeks, with weekly internship meetings. Compensation is at \$2.00 per hour, or \$690 for the summer.

Credits for the internship should be individually obtained through the student's academic advisor and institution, but may also be obtained through Dr. Syd Duncombe, U of I; Dr. John Eyre or Dr. Richard Foster, ISU; or Dr. Bill Bech, BSU.

Selections will be based on written resumes, recommendations and other information the student wishes to enclose, with attention given to grade-point, activities, and the student's reasons for wishing to join the program.

Applicants are requested to enumerate 3 specific internships, in order of preference, from the following list that they wish to be considered for. This list includes the agencies offering positions, the number available, and any unique subject matter involved. Further

information may be obtained through the professors listed above or the Department of Administration. Students should be informed of their selection and placement by April 30, 1975.

Resumes must be submitted by April 18 to the: Department of Administration, 145 Len B. Jordan Building, Boise, Idaho 83720, Attn: Diane Plastino.

Attorney General-1; Bicentennial Commission-1; Education-1; Employment: data processing-1, accounting-1, writing personnel and training material-1, economics-1; Health and Welfare: budgeting-1, legal aide-1; Historical Society: library-1, museum-1; Industrial Commission: workmen's compensation law-1; Insurance-1; Labor and Industrial Services-1; Lands: administration, finance-1, forest inventory, research-1; Lieutenant Gov.-1; Legislative Fiscal Office-1; Parks and Recreation: recreational and range planning, landscaping-3; Vocational Rehab: casework-1; Revenue and Taxation: inheritance tax, student must be in advanced accounting-1, circuit breaker tax-1; Secretary of State: writing biographies, gov't info for Idaho Blue Book-1, Sunshine Law research, must be advanced law student-1; Transportation: writing administrative brochures-1, real property analysis-1, environmental impact info-1, personnel projects-1, State Library-1.

## Total. Made especially for people who use spit on their contact lenses.

You really think you're saving something. Like the time it takes for proper lens care. And the cost of different solutions.

But in the long run you may wind up paying for short cuts. There's a chance your contacts will become contaminated. They'll probably feel uncomfortable and bother you. You may even get an eye infection. So why take chances with saliva?

Now there's Total®. The all-in-one contact lens solution that does it all.

Total® wets, soaks, cleans and cushions. And you only have to use a single solution to get the whole job done.

There are two good ways to buy Total®—the 2 oz. size and the 4 oz.

size. Total 2 oz. has a free, mirrored lens storage case, and the new economy 4 oz. size saves you 25%.

Total® is available at the campus bookstore or your local drugstore.

And we're so sure you'll like Total® that we'll give you your second bottle free. Just send a Total® boxtop with your name, address and college name to:

Total, Allergan Pharmaceuticals  
2525 Dupont Drive  
Irvine, California 92664  
(Limit one per person.  
Offer expires July 31, 1975.)



**Total. The easy way to care for your contacts.**  
available at

*Your Campus Store*

### BSU'S PRE-PROFESSIONAL CLUB

is sponsoring a

### PANEL DISCUSSION

ON THE  
PERSONAL ASPECTS OF THE HEALTH CARE FIELD

THE PANEL WILL CONSIST OF A LOCAL PHARMACIST, DENTIST, PHYSICIAN, AND PROFESSIONAL NURSE. EACH PANELIST WILL SPEAK ON THE ADVANTAGES, EARNINGS, AND OTHER PERSONAL REWARDS INVOLVED IN THEIR PROFESSIONS. AN EXTENSIVE QUESTION AND ANSWER SESSION WILL FOLLOW THE FORMAL PRESENTATION.

PLACE: Big Four Room, 2nd floor SUB

TIME: 7:30 PM, Thursday, April 17, 1975

ATTENDANCE: ALL INTERESTED STUDENTS ESPECIALLY THOSE INTERESTED IN THESE OR OTHER CAREERS IN THE HEALTH CARE FIELD.



Jim Sanchez is the new coordinator of Talent Search in Idaho.

## Sanchez appointed as recruiter for program

'Jim' Salvador Sanchez, 155 1st St., Nampa, has been appointed recruiter-counselor for the Talent Search Program in southwestern Idaho, announced Boise State officials today.

The objective of the program is to identify and encourage high potential, low income students to continue their secondary education and go on to college or vocational training.

As part of his job, Sanchez will travel to various high schools, departments of employment, and other social service agencies in search of college recruits. "I hope to reach all potential students, not just minorities," he said.

He will offer admissions and financial counseling, as well as other types of information to the future students. He added that he would also like to assist dropouts in furthering their education.

Sanchez's job is part of a federal HEW grant that is administered by Idaho State University. Through his office in the BSU administration building he can inform prospective students of educational opportunities at all southern Idaho colleges and universities.

Sanchez has been active in several civic groups in the Nampa area, including the Community Action Agency, the Community Health Clinic and the GI Forum.

## Chairmanship positions open

If you're tired of the same old student government and want to change it, apply for one of the chairmanship positions now open. There are openings for Student Union Program Board chairman, Student Services Director, Public Relations Director and Arbiter editor.

The chairman for the Student Union Program Board is responsible for all activities which the Board is involved in such as movies, projects, lectures, cabaret, coffeehouse and special events.

The Student Services Director is in charge of referrals on birth control, legal aid and the information booth. He is the coordinator of the volunteers under him.

The Public Relations director handles all the ASBSU promotions, keeps in touch with various news media, assists any campus organization in any promotional aspects and informs students of anything happening in student government.

Arbiter editorship includes the planning and administration of the newspaper, writing and reporting, working with the ASB offices, with the finance board, and working with other news media around the state.

All these positions are paid and applications may be picked up in the ASB offices on the second floor

of the SUB. They must be turned in by April 18.

Other committee positions are also open for the coming academic year. They include the personnel selection committee, judiciary, public relations, student services, student policy, library, recreation board, pop concerts, coffeehouse, lectures, and foreign films. Applications for these may also be picked up in the ASB offices.

## National Library Week announced

Take a break from inflation and return all of your overdue Boise State University Library books during the week of April 13-19. Students returning any overdue library books during this National Library Week will not be charged fines - no matter how much overdue the books are. So now is the time to clean out your closets and dig out any books you may have lost or forgotten about and return them to the library without having to pay a fine.

This year's theme is Information Power and you will see posters around campus depicting some of the kinds of information that can be found in the library that will give you power to fight

# BSU receives budget increase

Reporting on the State Board of Education budget for the 1975-76 school year at the Student Senate meeting April 8, ASBSU President, Nate Kim, stated that BSU has been appropriated \$12,300,000. This will be, he said, an additional one million dollars over the present

budget, or an increase of 11.7 per cent. Among Idaho's four institutions of higher learning, this is the largest increase. Kim also reported that twenty new faculty positions at BSU have been allotted for in the budget.

Mick Meyers of the Idaho Student Lobby stated that the total educational budget for the state of Idaho had been increased by three million dollars, and that BSU was to receive 26 per cent of that total. In

addition, Meyers related that the ISL was working to acquire more financial aid for students on a basis of need. He said this was difficult because there was no way of proving that additional funds were required, and because certain State Board members were opposed to the idea.

BSU President, Dr. John Barnes, has stated that although he regards the budget for the general operating fund of BSU as "excellent", he feels the fund for construction of new buildings on campus was grossly inadequate.

The Student Senate also received the budget recommendations from the Finance Board regarding the ASBSU funding for the 1975-76 school year. Student leaders spent

a long day Saturday preparing the budget for presentation to the Senate. The budget has been increased from 180,000 to 200,000 dollars. Nate Kim has asked the Senators to spend a week examining the budget, and to come to the April 15 meeting with any questions or suggestions that might facilitate the ratification of the budget.

Martin Teall, ASBSU Treasurer and chairman of the Finance Board, stated that the budget is "excellent, the best one we've had since I've been here." He also stated that if any group did not receive funding in the budget, they can still apply to the Finance Board for reserve funds. These applications must then be accepted by the Student Senate.

## New senate refuses Kim's appointments

by Rick Christian

Student government received a "facelift" Tuesday, April 8, after Dave Ward resigned and declared the 1974-75 Senate sine die, Chief Justice, Jim Broich swore into office the new ASBSU executive officers, and the members of the 1975-76 Senate as well. Nothing much else has changed, however, as the first action taken by the new Senate as an organized body was to prove.

Exercising their power in a very independent manner, the Senate threw a cog into ASBSU President, Nate Kim's administrative plans. They refused to endorse Kim's appointments to the following ASB positions: Bob Hoppie as Chairman of the Programs Board, Steven Mengel as Director of Student Services, Dennis Jones as Director of the Public Relations Department, and John Elliott as Editor of the Arbiter.

The senate did approve one

president appointment, John Steppe as Chairman of the Personnel Selection Committee. Senator Lenny Hertling explained the reasoning for the move. "We are trying to establish a means for determining who is the most qualified and who is going to do the best job for the students."

Kim countered by saying that he had talked with the appointees for many hours and that he felt they were amply qualified for their positions. "These appointments are very vital," he stressed. "I have to have individuals that I can work with."

A heavy burden now rests with Steppe. He must organize a selection committee, review the applications for the various positions, and submit his recommendations to the Senate. This will necessitate much time consuming discussion and evaluation by the committee.

Kim maintained that this delay will unduly inhibit the important

work that must go forward. "I have chosen these people to be my advisors," he said, "because I don't want a gap or a lag during the transition period between administrations."

Voicing his views from the gallery, Dave Ward cautioned the Senate against haste, and pointed out that these appointments were individuals that the Senate would have to work with for the entire coming year. "It is important to turn the appointments over to an objective board whose purpose it is to select the most qualified people available," he said. He also stated that he personally felt some of the presidential appointments were not qualified to fill the positions for which they had been proposed.

Howard Welsh concluded the topic by saying that the matter was not a personal issue, but that "it is simply one of handling the situation in the most frank manner possible."

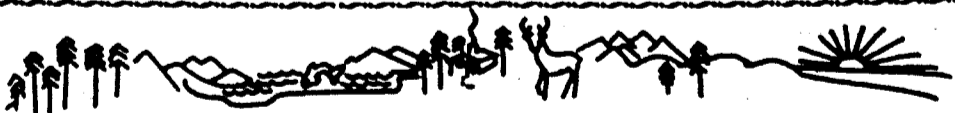
## ASB POSITIONS AVAILABLE

**Student Union Program Board Chairman**

**Student Services Director**

**Public Relations Director**

**Arbiter Editor**



## SUMMER is a good time to be in MONTANA

Want to get away to cool mountains and clean air? Montana State University offers you a special kind of summer quarter geared to your academic and recreational interests—that is if you're not planning on attending your own school's summer session.

More than 400 workshops, continuing education classes and regular courses. Classes in fly-fishing, education of the deaf, wilderness ventures, literature and the outdoors, history of jazz, man in the environment, Indians of North America, Yellowstone Park field program—and much more. Special student enrollment gives you hassle-free entrance—no transcripts, no testing.

And there's Yellowstone and Glacier Parks, music, live theatre, museums plus all out of doors for hiking, fishing, and backpacking right in your backyard!

For your FREE summer catalog, fill out the form, stuff it in an envelope and we'll do the rest. Mail to Office of Admissions, Montana State University, Bozeman, Mt. 59715.

Name \_\_\_\_\_  
Street \_\_\_\_\_  
City \_\_\_\_\_  
State \_\_\_\_\_ ZIP \_\_\_\_\_

- 9-week session • June 16-Aug. 15
- 4½-week session • June 16-July 16
- 4¼-week session • July 16-Aug. 15

# Koinonia

Mondays  
7:30 P.M.  
1006 Michigan  
By The SUB



Sponsored by Baptist Student Union



The Great  
Lut

HEH HEH  
HEH HEH

WAVE GOT  
A 913 AT  
7:19 AT  
42:00

EAT!

EAT!

GOOD EAT

EAT!

GRADY 25





## Count Dracula

# Final Subal play opens April 24

The box office opens this Thursday, April 17, for **Count Dracula**, the next, and last play of Boise State's 1974-75 theatre season. Students and faculty have been working industriously to meet the approaching deadline. Mr. Frank Heise and Mr. Roger L. Bedard, technical producers, employed the talents of many students these past few weeks in such major tasks as costume and lighting designs, as well as the help received from student shop employees and the technical theatre class, which is required to spend at least four hours a week on the set outside of class time.

Bruce Richardson, a sophomore theatre arts major in the Advanced Lighting class, designed the light plot chosen to light the **Dracula** set. All four Advanced Lighting students were required to submit a lighting design, and instructor Heise made the final decision.

The costume designs for the play constitute another major student contribution. Victoria Holloway, a junior in the Theatre Department, designed all but one of the women's costumes. The men will be wearing suits rented from Western Costume Company in Los Angeles and **Dracula's** cape comes from the University of Northern Iowa.

Victoria, a member of the costume design class taught by Mr. Bedard and a student employee in the costume shop, tried to stay as close to authentic 1930's clothing designs as possible. Vic received the most enjoyment from the flamboyant dresses worn by Sybil, an eccentric old lady in **Count Dracula**, and maintains that Sybil's designs were inspired by a chicken: a fat, fussy little chicken. Mina, the lovely young heroine, has several clothing changes which include an elegant evening dress, a negligee, and a striking, low cut "vamp" dress designed by the other

costume shop employee, Francis Hopson. Assisting Vic and Francis are Jenny Sternling and Stacie Ericson.

Janelle Walters heads the prop crew and has reupholstered the furniture to be used on the set, converting drab office furniture into elegant pieces fit for the old Seward castle. Royanne Klein has been gathering music and sound effects to enhance the production. Bill Nagel will manage the stage, and Terri Jenks has been assisting

Dr. Lauterbach at the rehearsals. So often, the valuable crew members behind the set are ignored. This article, therefore, is dedicated to all of you "tech" people - especially those students who have donated so much to this next show. **Count Dracula** should make a box office killing!

**Count Dracula** opens April 24 and runs until May 3. Reservations may be made starting Thursday. Call 385-1462 between 3:00 and 6:00 p.m. BSU students are admitted free.

## Spring concert slated for April 20 at BSU

The first of several spring ensemble concerts will be presented by the Boise State University Concert Band and Chorale on Sunday evening, April 20, at 8:15 p.m. in the Music Auditorium.

For its portion of the concert, the Chorale, under the direction of Daniel Russell, will perform several short works representing music of several noted choral composers. The Chorale will start with Stravinsky's harmonization of **The Star Spangled Banner**. Motets by Verdi and Hugo Distler, folk song arrangements by Walter Aschenbrenner and Christopher Ericson, and a vocal chamber number by Mozart will be presented.

The 64-piece Concert Band is directed by Dr. John Baldwin, currently in his fourth year at BSU. The Band will open its half of the concert with a Henry Fillmore march entitled **The Klaxon**. Vincent Persichetti's **Divertimento For Band, Op. 42** is an original work for band, written for the Goldman Band and first played by them in 1950. The piece is a lively bit of musical entertainment, in which

rhythmic and contrapuntal "savoir faire" is blended neatly with tongue-in-cheek humor and lyrical nostalgia. Its six movements comprise a "Prologue", "Song", "Dance", "Burlesque", "Soliloquy", and "March".

Paul Tanner, a first-rate trombonist himself, wrote **Aria For Trombone** in the late sixties. The work begins with a broad, lyrical section for the solo trombone, followed by a bright Latin section. Following an extended cadenza, the Latin feeling returns before the Coda. Dave Weatherred, a sophomore music education major, is the featured soloist in the work. Don Gillis' **Symphony No. 1 For Band** is a beautiful melodic work which tells the story of the composer's early life in Cameron, Missouri. The third movement, "Uncle Walt's Waltz" is thus described by the composer: "In that town there was a man whom I counted as my greatest friend, and in work or in play or in church or at the soda fountain, this was the man I enjoyed most of all. Actually he was a composite of many, many things and really many, many people. This movement is about him..."

The Concert Band will close the program with George Miller's arrangement of Rimsk-Korsakov's **Russian Easter Festival**, a monumental nationalistic work based on themes of the Russian Church.

Admission for the **Student Ensemble Concert** is by season ticket. Individual tickets will be available at the door for those without season tickets.

BSU Library Fine Free Week during National Library Week, April 13-19, 1975.



## Rowland noted as fine classical guitarist

Classical guitarist Gordon Rowland played to a fairly small audience in the Music Auditorium Thursday evening, April 10.

The concert lasted two hours and consisted of Mr. Rowland's transcriptions of various pieces by Bach, Beethoven, and Albeniz, and a variety of original compositions.

Three of the pieces especially enjoyed by the audience were **Bach's Jesu, Joy of Man's Desiring**, **The Venezuelan Waltz**, and **Mason William's contemporary masterpiece Classical Gas**.

Mr. Rowland has studied the guitar since the age of twelve, and has learned guitar proficiency from masters of the guitar in the United States and in Spain.

This young man is a local person, having grown up in McCall. His favorite contemporary musician is Loe Kottke. He lists among his hobbies fishing, gardening, and playing marbles.

He will be making his California debut in May. Thanks to the Programs Board for bringing a fine artist to BSU.

## You and Me, Babe

### Not really memorable

by Aleta Fairchild

**You and Me, Babe** is the first novel by Chuck Barris. The novel is loosely stylized after his own life.

It is easy to tell from reading this book that Mr. Barris is not a member of America's intelligencia. He is not a significant or unique writer. He is notable rather for his mundane, money-grubbing daytime shows.

**You and Me, Babe** is one of those sentimental little stories about a man and woman who love each other but for some reason can't live together. The principal characters are not well defined. Tom marries Samantha for her money, only to discover that she can't collect the money for another 30 or 40 years. Then he realizes that he actually

loves her, and penniless, they joyfully skip hand-in-hand through six years of wedded bliss. When Tom finally makes it big in the TV game show business, he abandons his wife to embark on a quest for the Big Money. He notices too late that he has lost his wife and daughter.

The dialogue ranges from "cute" to "sappy". This story is both easy to read and easy to forget. It will probably enjoy popularity for a short while and then fade into the mists of obscurity from whence it came. Not that this book isn't enjoyable, you understand...it's just that it isn't particularly memorable.

This book donated courtesy of Your Campus Store.

## 'Dutchman' to be shown Tuesday

**Dutchman**, a film adaptation of the play by Black artist Baraka (formerly LeRoi Jones), will be shown in the Big Four in the Sub Tuesday, April 15, at 1:30 p.m.

The film, running less than an hour, shows a confrontation between a black man and a young white woman that builds to an explosive climax aboard a metropolitan subway train.

In the '60's when the film was

made, its producers asked officials for the use of a New York transit subway train to stage the film. They were refused because of the play's controversial denouncement of racism. Shirley Knight was lauded by critics for her performance.

Presented jointly by the Foreign Films Committee and the English Department, the **Dutchman** is free to the public.

## Terre Em Transe (Brazil - Rocha)

LA 106  
7:30

April 18

Presented by  
the

Foreign Films Committee

## The Egyptian Foundation presents

Gaylord Carter accompanying  
fine silent films on the

Ada Theater organ

Program I 6:30 p.m.

Charlie Chaplin W.C. Fields Harold Lloyd

Program II 9:00 p.m.

Phantom of the Opera, starring Lon Chaney

Monday April 21, Ada Theater

tickets \$3.00, children under 12 \$1.50 at the SUB information booth

Proceeds will go to preservation of the Ada Theater and organ

**Twin Springs Resort**  
Hot Pool Cabins Resturant  
Open All Year  
Call Mountain Messages  
in Challis 879-2786  
This Coupon Worth a FREE Beer Anytime

# Faculty senate hears testimony on the establishment of day care

by Barb Bridwell

The Faculty Senate heard a report Tuesday on the feasibility of establishing a day care center on the Boise State campus. The major objectives of the program, according to Howard Welsh, a member of an investigating committee on day care, would be the development of a quality training program for day care operators and an educational program for pre-school children.

Welsh stated in his presentation to the Senate, that matching funds are available for day care on a contractual basis. He said that the ASB is considering the appropriation of \$10,000 for a 25 per cent matching fund.

Payment for day care will hopefully be on a sliding scale, according to Welch. This amount would be approximately \$2.50 a day per child. He stated the determining factors for payment would be the ability to pay, hours of need and other nonmonetary contributions.

The minimum anticipated revenues from the day care center to be used for matching funds at a

later date would be \$14,400. This figure is arrived at by taking \$2.50 a day and multiplying it on a yearly basis.

The project objectives also include:

1. Providing experimental learning centers for undergraduate and graduate students of the University who are in programs which directly relate to day care and kindergarten operations in Idaho.
2. The coordination of campus and community day care center training activities and program development.
3. To develop additional applications, field testing, and coordination of educational modules which can be used in statewide programs for pre-schoolers.
4. To provide a learning center which has the flexibility for creative educational programs.
5. To provide the early identification of learning, physical and developmental disabilities with screening and testing processes for detection.
6. To provide access for limited

research potential to students of the University concerned with problems of development processes in children.

7. To expand employment potential to those people who are training for day care operation and teaching aides.

8. To initiate the project with children between the ages of 2 1/2 to 5 years, expanding both number and age range over a five-year period.

9. To provide a qualitative program of day care with the components of educational, recreational and emotional quality, where parents may leave children with full knowledge that they are safe and well cared for.

10. To provide evaluation of the program on an on going basis to strengthen areas of weakness, improve on existing strengths and measure the impact of the program as the trained personnel move day care centers and the children into the public school system.

The Senate took no action on the matter.

# Veterans work study begins in July

The Veterans Readjustment Act of 1974 has led to many changes within established VA programs. One such program is the VA Work-Study Program.

Beginning July 1, 1975, full-time veteran students who are found eligible for the VA Work-Study Program will be able to perform duties at the rate of \$2.50 an hour (tax free). He will be allowed to pursue a total of 250 hours per semester not to exceed 750 hours per fiscal year.

Payment for the work is as follows: When a veteran is initially accepted into the program he will be certified for 250 hours. The first 100 hours (\$250) will be paid in advance. The remaining 150 hours will be worked off in 50 hour increments with payments received after completion of the hours.

As of yet, BSU has not been allocated its quota of hours for the next fiscal year. We are hoping to receive approximately 20,000 hours. The work that the veteran will perform must be in areas relating to veterans records;

Admission and Records, Vet-Rep on Campus, Data Processing, Registrar's Office, Veterans Affairs Office, and Office of Admissions.

The Office of Veterans Affairs and the Vet-Rep on Campus will be accepting applications for the program sometime after July 1, 1975.

## Cold drill artists to read

The cold drill, BSU's award winning literary magazine, once again gleams fine prose and poetry from university artists.

The public will have an opportunity to hear cold drill writers present their work in a public reading held in the Look-out Thursday, April 17, at 7:30 p.m. in a coffeehouse setting. Contributors include Jon Pickens, Lonnie Mardis, James Irons, Ken Kirpatrick, Pamela Joyce, and Charles David Wright.

Other interested writers may bring their works to read during an open period after the cold drill presentation.

# Zoology professor works on fish poison

by Rick Christian

Dr. Fenton Kelley, Assistant Professor of Zoology, is currently working on a project to determine the lethal effects of a fish poison called "squaxon". In low concentrations squaxon is selective towards a number of fish species which are considered undesirable.

A chemical of this nature would be of great value to wildlife management agencies, and the Idaho Fish and Game, as well as the Environmental Protection Agency are interested in its development. There is one problem, however. No one has been able to identify squaxon's mode of action. As Dr. Kelley puts it, "We know that if you put some squaxon into a tank with some fish in it, they will soon stop breathing, but we don't know which organs it is affecting."

In his study, Dr. Kelley plans to garner facts in three important areas: 1. where it localizes within the fish body, 2. what compounds it is associated with, 3. how it disrupts the normal functions of a fish.

The University of Oregon has sent Dr. Kelley a thousand dollars worth of tritium labeled squaxon to facilitate his experiments. Tritium is a radioactive isotope of the hydrogen atom, which emits Beta-rays that are similar to fluorescence or a "flash of light". Using highly sensitive photo cells, tritium can be detected in very minute quantities. By dissecting the fish and examining the viscera with the photo cells, Dr. Kelley will be able to isolate the organs which concentrate the poison.

He then plans to homogenize the tissues into a liquid, and fractionate the liquid in a centrifuge. Particles of differing molecular weights will appear in the column tube as distinct layers. Dr. Kelley states

that he then plans to separate the layers into individual compounds by an elaborate technique called paper chromatography. Using this process he hopes to identify the active agent within the poison.

He also states that there is one major stumbling block; the active molecule may be breaking up after entering the fish and one of its precursors may be inhibiting an enzymatic pathway.

# Calendar

## TUESDAY, APRIL 15

- 1:30-3 p.m. - Foreign Film, *Dutchman* - SUB, Big Four
- 7-9 p.m. - Folk & Square Dance - SUB, Ballroom
- 3:30 p.m. - Baseball, BSU vs College of Idaho - Caldwell
- Library Fine Free Week

## THURSDAY, APRIL 17

- 7:30 p.m. - cold drill Public Reading - SUB, Lookout
- 3:00 p.m. - Cheerleader Practice Begins - Aux. Gym
- Library Fine Free Week

## FRIDAY, APRIL 18

- 7:30 p.m. - Foreign Film, *Terre Em Transe* - LA 106
- 6 p.m. - Vets, Esquire Club - SUB, Minidoka
- Library Fine Week

## SATURDAY, APRIL 19

- Noon - The Great Lunch - Bronco Stadium
- 1 p.m. - Baseball, BSU vs Seattle University - Seattle, Wn.
- 8 p.m. - Boxing Match - BSU Gym
- 7 p.m. - China Film Festival - SUB, Nez Perce
- Library Fine Free Week

## SUNDAY, APRIL 20

- 8:15 p.m. - Concert, Concert Band and Chorale - Music Auditorium
- 8 p.m. - Movie, *Super Cops* - SUB, Ballroom
- Noon - Baseball, BSU vs Seattle University - Seattle, Wn.
- 1 p.m. - 5th Annual Ignitor (Funny Cars) - Firebird Raceways

*50's Dance at St. Paul's*

*April 19 8pm*

*Beverages 25¢*

*(your favorite on tap)*

*couples: 75¢ singles: 50¢*

*come as you are*

*-or as a 50's swinger*



**MARDI GRAS**  
one night only  
Friday April 18

# New China Film Festival

April 19

"Away With All Pests"

"Friendship First-

Competition Second"

April 26

"8 or 9 in the Morning"

"Peoples Liberation Army"

Both films in the Nez Perce

Room SUB

7:00 pm

US-China Friendship Asso

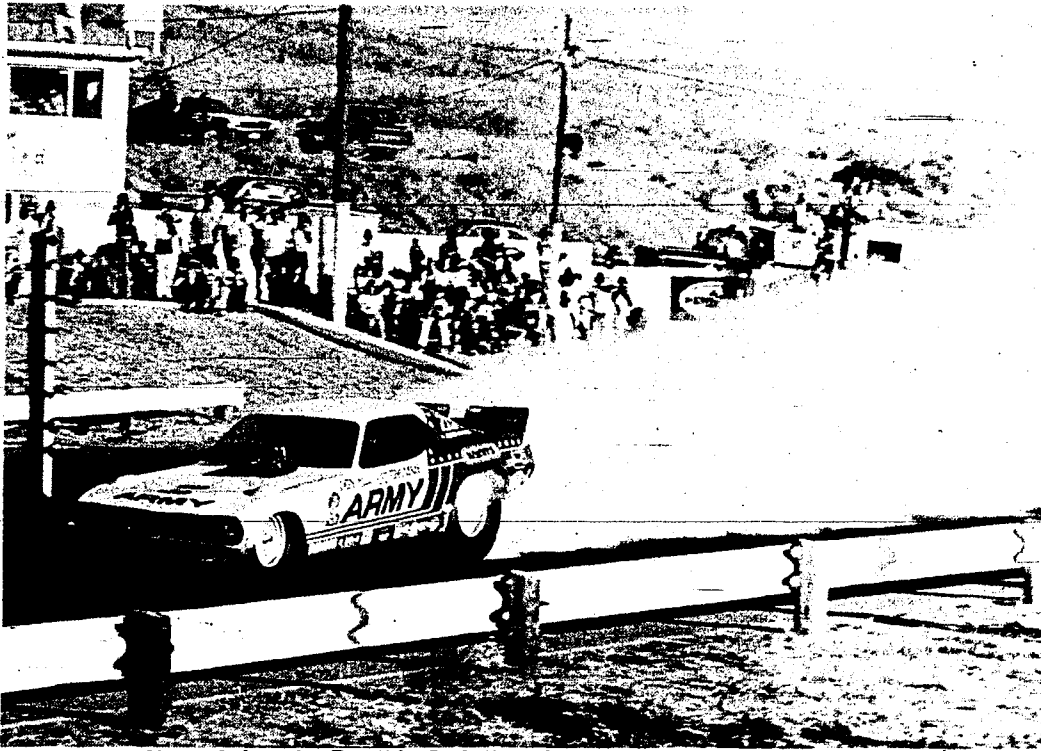
## RESEARCH

Thousands of Topics  
\$2.75 per page

Send for your up-to-date, 160-page, mail order catalog. Enclose \$1.00 to cover postage (delivery time is 1 to 2 days).

RESEARCH ASSISTANCE, INC.  
11941 WILSHIRE BLVD., SUITE #2  
LOS ANGELES, CALIF. 90025  
(213) 477-8474 or 477-5493

Our research material is sold for research assistance only.



Eleven time National champion Don "the Snake" Prudhomme returns to Firebird Raceway Sunday, April 20 for the 5th Annual Ignitor. This is Prudhomme's first Ignitor appearance since 1971.

## Firebird to host 5th Annual Ignitor

The thunder and fire of four of the world's fastest funny cars will kick off Firebird Raceways 1975 major event season at the 5th Annual Ignitor, Sunday, April 20.

Gates for the traditional funny car opener will open at 8:00 a.m. while eliminations go at 1:00 p.m.

The big question between area-wide drag racing fans, is, can Don "The Snake" Prudhomme continue on with his unprecedented record at Firebird of never losing an event he has entered? The odds makers have to go with Prudhomme and his all new Monza which not only won the recent NHRA Winternational, but likewise three weeks ago the Gatornationals at Gainesville, Florida. Many experts feel his sleek new car will be the first funny car to go into the fives. Its already gone 6.08 seconds at over 230 miles per hour in the quarter mile.

Probably the one man who stands the best chance of getting by "The Snake" will be Ed McCulloch entered with his all new Revellution Dodge funny car. A five time national champion, "The Ace" is now getting the new car really running. Only last Sunday at Seattle International Raceway, McCulloch clicked off a solid 6.26 to establish a new funny car standard plus win the race. The defending champion of Firebird's night fire '500', McCulloch would

like nothing more, but to be the first man to stop Prudhomme's win streak at Firebird.

Its the winner of a race that counts, however, the fellow they call "The Mongoose", Tom McEwen can lay claim to beating Prudhomme at Firebird in at least one round which came in 1974 in a special match between the two arch rivals. McEwen, who flies the U.S. Navy colors, has now added even greater support by carrying the banners for the Boy Scouts of America into the contest.

Interesting enough Seattle's Jerry Ruth who's entered the race with his powerful Mach One Mustang, has actually gone faster and quicker at Firebird that Prudhomme, McCulloch and McEwen's past records indicate. "The King", is the current funny car miles per hour track record holder with a swift 223.24 in the books. Ruth was the winner of the '72 and '74 ignitor events and the only meeting ever at Firebird between the former world champion and Prudhomme came at the first ignitor in 1971 when "The Snake" beat him and also took home the title.

General admission for the ignitor will be \$5.00, children, \$2.00 6-12 years. Firebird Raceway is located six miles north of Hwy. 44 on Hwy. 16 to Emmett.

## Gal tracksters win first meet

by Johna Reeves

The Boise State women's track team opened the 1975 season successfully by defeating Idaho State 42-27 in a dual meet at the Pocatello school.

The Broncos were lead by freshmen Kelly Pate (100 yard hurdles, 16.4; 440-yard dash, 62.8) and Barb Buchan (mile run, 6:09; 880-yard run 2:47.5). Deb Towne took first in the 440-yard hurdles (77.8) and second in the 100-yard hurdles. Lydia Gonzales grabbed second in the mile and 880-yard runs and joined Towne, Pate and Buchan to take the 880 medley relay (2:04.2). Ann Darnell placed third in the 100 yard dash, 220-yard dash and 880-yard dash. Pate's time in the 100 yard hurdles qualified her for the regional track meet in Spokane. The team's next meet will be this weekend in Cheney, Wyoming.

## Gal netters defeat Whitman, EOSC

Boise State's women's tennis team added a couple more victories to their record Saturday by defeating Eastern Oregon 9-0 and Whitman College 7-2.

Boise State 9-EOSC  
Singles: Beatty(BSU) def. Shaw 6-2, 7-6; Masingill (BSU) def. Mills 4-6, 6-3, 6-1; Turner (BSU) def. Yoder 6-3, 6-0; Mueller (BSU) def. Moss 6-1, 6-0; Ayres (BSU) def. Moore 7-6, 6-4; Gardner (BSU) def. Peterson 3-6, 6-4, 6-2.

def. Yokomoto 6-2, 7-5; Gardner (BSU) def. Berge 6-3, 7-6.

Doubles: Masingill-Mueller (BSU) def. Shaw-DeMoss 6-3, 6-1; Beatty-Turner (BSU) def. Mill-Moore 6-3, 6-2. Ayres-Jones (BSU) def. Yoder-Peterson 6-3, 6-4.

Boise State 7-Whitman 2  
Singles: Elgee (W) def. Beatty 6-2, 2-6, 6-4; Masingill (BSU) def. Glenn 7-6, 3-6, 6-3; Medarry (W) def. Turner 7-5, 6-4; Mueller (BSU) def. Sheriff 6-0, 6-1; Ayres (BSU)

HER FACE WILL LOOK LIKE A LAUNDRY BAG WHEN I GET...

RANDY 23

**BSU SKYDIVERS**

# BIG BOY SPECIAL

# JB's Big Boy Combo!

## \$ 1 25

The *Original* Double Deck Hamburger  
Chilled Lettuce Salad  
French Fries & Reg. Coke



**It's the real thing.**  
Coke.  
Trade-mark




**BIG BOY** 500 S. Capitol Blvd.  
**FAMILY RESTAURANT**

# Sprinter Sam Jenkins having tremendous spring

by Rick Christian

Sam Jenkins, Boise State's co-recordholder in the 100 and 220-yard dashes, is having a tremendous spring. He has swept both sprint events in each of BSU's dual meets and tallied a second at the BYU indoor meet. He has been far and away the Broncos' most consistent runner.

When asked the reason for his sparkling performances thus far this season, Sam points to his strenuous workouts last fall. "I worked a lot with weights, so I guess that has a lot to do with it. They have really helped build my strength. We have this thing with the weight machine called the sprinter kick, which has helped me to explode out of the blocks." He states that coach Jacoby has changed his style and that it has improved his ability to start out of the blocks. Referring to coach Jacoby, Jenkins said, "He has helped me a lot. He has spent more time with me this spring than last spring on starts. That is the big improvement; he is able to spend more time with us now. He has shown me that I was having problems with my arms coming out of the blocks."

Sam is still not satisfied with his progression and feels that he can better himself in a number of

areas. "Now I guess I'll just have to concentrate on speed. My problem right now is that after 60 yards, I have a dead spot in my sprinting and I slow up. Then I speed up again, so I guess I'll have to work on that."

Sam first became interested in track as a youngster in Texas. An elementary teacher noticed that Sam had a natural ability to run and directed Sam's talent in that area. Sam then moved to Pomona, California where he was able to take advantage of the weather and the up-to-date track programs in the high schools. At Mt. Sac Junior College in Pomona, Sam developed into a first-class sprinter. It was also here that he became interested in Boise State. A friend of Sam's, Ken Carter, induced him to enroll even though he had misgivings.

One of his major misgivings was the inclement weather in Boise. "To be truthful with you, it is really hard for me to run in cold weather," he admits. "It's just really hard to get loosened up for the sprints. It affects you psychologically because as a sprinter you worry a lot about pulls. That's the biggest thing you worry about. But you just have to go out there and do what comes natural." He decided to come and see what

the place was like. "I came that spring and well, here I am."

"I'm not sorry I came, like most people said I would be. They said it wouldn't be the place for me, but I think it's beautiful here and I'm really glad that I came. We get a good workout, so I can't complain. Down in California it's raining this time of year, so it's really not that much of an advantage."

Since he is a senior, Sam hopes to continue his winning ways. He prepares himself mentally before each race, but he doesn't try to psyche the other runners. "I just think about what I've got to do, how I'm going to do it, and then I go out and do it," he states. He tries to take each meet as it comes, but says he finds himself pointing towards the Big Sky Conference meet as the most important one of the year. "I think we have a real good chance to win it. The competitors from the other schools will be knocking Montana out of the running, so that will help us out a lot. Our biggest problem right now, I would say, is the field events. We have to strengthen them up by conference time so hopefully we will come out on top."

With athletes like Sam Jenkins, the Broncos are a lot more than hopefuls.

# Bowling scores

Women's Varsity League		Series (Men)	
Game		Mike Jones	549
Renate Martorano	186	Bob Harvey	549
Patsy Wilson	175	Jim Pepple	526
Carrie Yocum	172	Varsity Scratch Singles League	
Series		Game	
Carrie Yocum	472	Bob Harvey	224
Shawna Perkins	463	Greg Hampton	232
Renate Martorano	449	Dave Jessick	226
Mixed Doubles League		Series	
Game (Women)		Bob Harvey	787
Nancy Mathews	180	Greg Hampton	783
Sheryl Hudson	163	Ernie Bradburn	743
Karen Jones	156	Men's Varsity League	
Series (Women)		Game	
Nancy Mathews	468	Mike Hofferber	207
Carrie Yocum	424	Rick Lee	190
Sheryl Hudson	408	Sam Cisners	189
Game (Men)		Series	
Steve Hudson	212	Mike Hofferber	571
Bob Harvey	207	Rick Lee	516
Mike Jones	200	Ken Dick	514

# Boise boxers slate match

Saturday night at 8 p.m. in the gym, there will be a boxing match between the Idaho State Golden Glove champions and the western United States Marine Corps boxing team. The Idaho boxers will be coached by the Boise Vista Boxing Club. The Marines are coached by 1964 Olympic bronze medal winner, Sgt. Charles Brown.

Representing the Idaho fighters will be Joey Keen of Emmett, Dirk Godby of Gooding and Brent Lusk

from Fort Hall. Blessing Bird, Idaho State heavyweight champion will not be fighting due to other commitments.

Susan Rinard, Miss BSU, will be on hand to present individual and team trophies.

Students will be admitted for \$2.00 with ringside seats for \$6.00 and general admission \$3.00. All proceeds will go towards purchasing boxing equipment for the state boxing team clubs.

# Gameroom news

All those signed up for the Marathon tournament are encouraged to begin their individual events. Pairings for the football and table tennis competition will be ready Monday April 14.

Plan now to attend the Super "Free Nite" in the Games Area, Friday Nite, April 25. Starting at 7:00 p.m., the entire Games Area will be open all nite free of charge. You must bring you BSU ID card for all activities.

# Intramural news

The Intramural Women Basketball Champs for 1975 were The Bombers!

FINAL STANDINGS	
Women's Basketball	
Bombers	4-0
Droopers	3-1
Ding Dongs	2-2
Double Dribblers	1-3
Enzymes	0-4

Co-Ed Softball

Sluggers 15	Morrison 9
Dark Horse 14	Thunderbirds 13
Stealers 19	Snarfs 14
Sliders beat Hamilton's Hammers on a forfeit	
Sluggers 21	Dark Horse 10
Madam Sophi's 20	Thunderbirds 14
Madam Sophi's 11	Cubs 10

# Grapplers plan "superstar" meet

by Rob Lundgren

Now that everybody knows that the Boise State matmen are the best in the area, one may wonder which Bronco grappler is tops among his own teammates. An inter-squad contest would be a good indication of ability and that's just what BSU's wrestlers have planned. A "Superstars" meet.

Scheduled to take place this Monday through Friday, organizer,

Don Wakefield, (BSU's 177 pounder) is using the popular new event on the same premise as the pro's. "It helps build closer friendships in a friendly, competitive atmosphere. We're just out to have some fun and a good time," Wakefield said.

The list of events in which the participants will choose from combine speed, accuracy, skill and

a little craziness. Of the dozen categories, each two member team will pick seven specialities which they will compete in. A frizbee accuracy contest, sack races, relays, bicycle races and tennis matches are just a few of the alternatives from which they may choose.


Coach Mike Young, sidelined from the meet due to an operation last week for torn cartilage in his knee, is very happy with the idea of the "Superstars" contest. "I'm pleased with the endeavor these guys have shown to stay together as a team after the season is over. It's really great for bringing them closer together," commented Young. "It's like a big happy family, and that helps when you're up against tough competition."

According to Wakefield, this is to be an annual event, while trying to expand to championships among all the other sports on campus. "It would really be great if we could have this every year with competition among all Boise State athletes. I think it would build a better relationship among athletes in all sports," noted Wakefield.

So when you're heading to class this week and a frizbee happens to come zipping past your nose, don't fret; it's your wrestling team preparing for next year.

CLASSIFIED

<p>Attention!! All organizations wishing to receive the ASB Senate minutes and agendas please contact the ASBSU offices or any ASB Senator.</p>	<p>Attention Freedom Militia: We need your names in order to print your letter.</p>
<p>To the lady sitting near the bar at the Gras on 4-4 who I really wanted to dance with and who said "No, I really want to dance with you!" Please be at the same location next Gras. Signed, Desperate to Dance.</p>	<p>WANTED: 2 bedroom house near university - must allow cats. \$100. Contact either Karen or Anne at 343-3525.</p>
<p>The BSU Cheer squad announces try outs for the 1976 squad. Practices will begin on April 17 at 3:00 p.m. in the auxiliary gym. No experience necessary, just lots of spirit and the desire to support BSU teams. Tryout date is May 1. Girls and guys are needed. For more information call Kathy at 345-9205 or Deb at 385-3459.</p>	<p>WANTED: Men and Women Ex Ball Players - wanted to umpire fast pitch softball. Good extra summer money! Call Mike at 344-0395 or Terry at 342-0412 after 5.</p>
<p>The regular meeting of the Esquire Club will be meeting Friday, April 18, in the Minidoka Room at 6:00 p.m.</p>	<p>The main topic of this meeting will be election of new officers for next fall. Other topics that we will be talking about are the Golf Tournament; the softball team and the raft race.</p>



<b>SUNDAY:</b>	Student I.D. Discount Night 50¢ Off On Any Hamburger With Student I.D.
<b>MONDAY:</b>	25¢ Night 9:00-11:00 25¢ Beers 25¢ Sandwiches
<b>TUESDAY:</b>	Giggle Hour 8:00-10:00 Pitchers \$1.00 Glass 20¢ Girls Only
<b>WEDNESDAY:</b>	Hut Night - Hut Burgers 2 For 1 From 8:00-9:30 Pitchers \$1.50 - 9:30-11:00
<b>THURSDAY:</b>	Guzzle Hour 8:00-9:00 Beers 20¢ Pitchers \$1.00 Guys Only
<b>FRIDAY:</b>	Happy Hour 4:00-7:00 Pitcher Only \$1.00
<b>SATURDAY:</b>	ENTERTAINMENT NIGHT

**1233 BROADWAY AVENUE AT ROSSI**  
**PHONE 342-9086**

# RESEARCH

**NORTH AMERICA'S LARGEST SERVICE**

*\$2.75 per page*

**Send now for latest catalog. Enclose  
\$2.00 to cover return postage.**

**ESSAY SERVICES**

*Box 1218*

*Niagara Falls, N.Y. 14302*

*Our research service is sold for research assistance only.*