

**Boise State University**  
Theatre Arts and Music present



**FEBRUARY 20-23, 1997**  
**MORRISON CENTER MAIN HALL**

# **CABARET**

**MUSIC BY JOHN KANDER, LYRICS BY  
FRED EBB AND BOOK BY JOE MASTEROFF**





## 2NEWS this MORNING

Join Mollie McCarty, Rich Wright  
and Krystal Cook every week-  
day morning at 6:00 a.m.

# IDAHO'S FIRST 24 HOUR NEWS CHANNEL

News and weather on the hour, every hour, day and night.

## 2NEWS

Watch Kimberly Van Scoy and Ron  
Gardner, Wayne Dzubak with sports and  
Scott Dorval with the weather every  
weekday evening at 5:30 and 10:00.



IDAHO NEWS NETWORK

Professional coverage of Idaho from  
Boise, Lewiston, Twin Falls and Idaho Falls





## NOTE FROM THEATRE ARTS DEPARTMENT

Producing a major musical like "Cabaret" is an enormous undertaking for BSU's Theatre Arts Department. At the same time, it has been an extremely positive experience and a crucial component of the education and theatrical training of our students.

Presenting such an event requires involvement from many different communities -- from the efforts of our talented faculty, staff and students to your interest and support in coming to this production.

The Boise State University community has been involved in countless ways. Direct and indirect support has come from many sources and two deserve special recognition. College of Arts and Sciences Dean Phillip Eastman has been an invaluable supporter of Theatre Arts at BSU. He has provided necessary resources, advocated the department's growth and development and, most important, continued to be a loyal audience member. Pavilion staff, especially George Manning, have given generously their time and expertise to make this production happen. They willingly shared resources in the belief that our success was important to BSU and to Boise.

The Theatre Arts Department was very fortunate to receive major support from KBCI-Channel 2, the local CBS television affiliate. Account Executive Dick Brass facilitated that involvement. KBCI's support demonstrates that community interaction is essential in providing good theatre and good theatre education.

Finally, we appreciate you. Your participation as an audience member at this performance is irreplaceable; without your presence this would be only a dress rehearsal. It is our hope that you enjoy what you see, that it is engaging, thought provoking and prompts you to attend more theatre at Boise State University or wherever a play is given.

**Dr. Kent Neely**  
Theatre Arts Department Chair



## NOTE FROM MUSIC DEPARTMENT

Welcome to the cabaret! The Boise State Department of Music is happy to participate with Theatre Arts in bringing this work to the stage again. I have seen many performances of "Cabaret" including the screen version and look forward to the experience of this current production. Our performers are talented, energetic and excited to be on stage. Teachers and students have all put tremendous time and effort into bringing to you the best possible production-I know you will be happy to spend the evening with us.

**Dr. James D. Cook**  
Boise State University



## PRODUCTION HISTORY

"Cabaret" is based on the true-life observations of Christopher Isherwood, who spent his early youth in Berlin between 1929 and 1932. He recorded these observations in a book called "Goodbye To Berlin," later included in "The Berlin Stories," along with "The Late Mr. Norris."

Isherwood's acclaimed book drew the attention of noted playwright John Van Druten, especially the story entitled "Sally Bowles." Druten turned it into a play, "I Am A Camera." Produced on Broadway in 1951, it enjoyed a huge success with a run of over a year and earned stardom for actress Julie Harris.

The idea of turning this unlikely-seeming material into a musical began with playwright Joe Masteroff who took it to Hal Prince, producer of "Fiddler On The Roof." He in turn brought in song-writers John Kander and Fred Ebb. The original cast included Joel Grey, Lotte Lenya and Jack Gilford. The show opened November 20, 1966 and closed three years later after a total of 1,166 performances. "Cabaret" won the New York Critics Award and eight Tony Awards, including Best Musical of 1967-1968.

A film version followed, directed by Bob Fosse. It earned eight academy awards including Oscars for Liza Minnelli as Sally Bowles and Joel Grey, recreating his role as Master of Ceremonies from the original stage version.

"Cabaret," on film and on stage, has been before the American and world public ever since. In 1987 the show was revived once again on Broadway and once again Joel Grey starred in his Master of Ceremonies role.



# Tood's

*clothing for casual success*

COME SEE  
OUR NEW  
SPRING  
COLLECTION

THE MODE BUILDING  
800 W. IDAHO STREET, STE. 100  
(208) 333-0001



**NEW LOCATION!**

**AN ALTERNATIVE IMPORT SHOP**

JEWELRY \* CLOTHING \* HOME DECOR  
A COLORFUL SELECTION FROM ALL OVER!

**804 W. Fort Street**

*across the parking lot from the Boise Co-op*

**331-1212**

**Open**

**Mon-Friday 10am-7pm**

**Saturday 10am-6pm**

**Sunday 10am-5pm**

*Cool Stuff - From Cool Places!*

## Pat Harris School of Dance / Broadway Dance Center



Ballet, Tap, Jazz, Hip-Hop, Clog,  
Country, Ballroom

Ages 3 to Adult -  
Beginning to Advanced  
Full staff, highly qualified instructors.



*Dance Dance Dance*

**1225 McKinney**  
(Off Fairview behind BMC West)  
**375-3255**

**893 E. Boise Ave.**  
(Near Apple St.)  
**342-6123**



**Maysco Dance Supply**

Idaho's Dancewear Specialists Since 1955

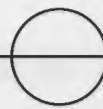
Esther Herr, Owner

Diane Harris, Manager

**1225 McKinney**  
(Off Fairview behind BMC West)  
**(208) 375-3255**  
**(208) 466-7254**

Sequins  
Dance Footwear  
Unisex Dancewear  
Costume Accessories  
Team & Rodeo Appliques





# DIRECTOR'S NOTES FOR "CABARET"

by Richard Klautsch

Few musicals are as challenging to produce, or as unwilling to fit the comfortable molds of convention and formula, as "Cabaret." After all, there is no hero or heroine. The main action is fragmented and interrupted by periodic visits to the bizarre Master of Ceremonies' "Limbo" cabaret (what is this guy, anyway?). Some of the musical numbers are downright chilling (listen to the irony of "Tomorrow Belongs to Me" or the haunting refrain of "What Would You Do?"). The locale is Berlin, 1930, a bustling and malevolent city heavily brutalized by depression, unemployment, and political violence so extreme that murder in the streets is commonplace. The primary interior setting is the Kit Kat Klub, where the atmosphere is thickly decadent and licentious. Finally, "Cabaret" doesn't even have a happy ending.

How much more of a challenge could a director want?

None of this is what "Cabaret" is about, however. And, ultimately, what it's about makes this one of the great musicals in the American theatre. Now don't worry, I'm not going to tell you in detail what I think. You're entitled to your own experience, perceptions, and conclusions, and you'll certainly have your own ideas. Because through its unconventional settings, structure, and content, it is a musical that has a lot to say about us, about our darker impulses as well as the enduring strength of our nature.

"Cabaret" speaks to us because it is a human story depicted in richly textured, if often disturbing, situations. It introduces us to characters who are far from perfect and whose struggles to make the right decisions are as complicated as our very own. No matter how we judge or what we feel about Sally Bowles' self-indulgences, Fraulein Schneider's priorities, or Ernst Ludwig's nationalism, they persuade us to consider our own vulnerabilities. And to consider that circumstances have an insidious way of corrupting the moral balance of any society. At any time.

Now that's about as far I'll go. The backstage crew must set up, the orchestra and stage band must tune, the dancers have to stretch, and the cast must warm up. We have an evening full of great music, sensational dancing, and fine acting to share with you (I mean, this is one of the great musicals of the American theatre!). And now, like the memorable Sally, I invite you to leave your troubles outside and come to the cabaret, old chum, come to the cabaret. There is no other place quite like it.

In closing, I want to send my very personal and heartfelt thanks to the many, many individuals whose efforts and dedication have made this production possible. My friends and colleagues in the Music and Theatre Arts Departments far exceeded my highest expectations, contributing countless hours in preparation and production. The BSU President's Office, Alumni Association, and Dean of the College of Arts and Sciences have provided unwavering support and encouragement. Our friends at KBCI have generously demonstrated the priceless value of corporate partnership in support of the arts. The many BSU students involved in this production of "Cabaret," on stage, in the orchestra pit, backstage, and in the shops, have earned my respect for their talents and hard work. Hals und Beinbruch!



## ACKNOWLEDGEMENTS

### **Boise State University:**

Charles Ruch, President  
Daryl Jones, Vice President for Academic Affairs  
and Provost  
Phillip Eastman, Dean, College of Arts  
and Sciences  
Dexter King, Director, Public Events  
Charles Spencer, George Manning and  
Audrey Eldridge, Pavilion  
Kim Philipps, Assistant Director, BSU Foundation  
John Franden, Executive Assistant to the President  
Bob Davies, Director, Alumni Relations  
Chuck Scheer, Photographer  
Edie Jeffers, University Relations  
Morrison Center Staff

### **KBCI Channel 2:**

Jeff Anderson, General Manager  
Dick Brass, Account Executive  
Pat Roberts, Community Affairs

### **Boise Music Week**

### **Boise Little Theatre**

### **Bench Commission**

### **Joe's American Bar and Grill**

The animal costume and uniforms in the performance are provided courtesy of Broadway Costume, Inc., Chicago, Illinois.



# SYNOPSIS OF SCENES & MUSICAL NUMBERS

## SYNOPSIS OF SCENES

SCENE, Berlin, Germany.

TIME: 1929-30. Before the start of the Third Reich.

## SCENES

### ACT ONE

Scene 1: Kit Kat Klub (Limbo)  
 Scene 2: Compartment of a European Railway Car  
 Scene 3: Cliff's Room  
 Scene 4 & 5: Kit Kat Klub  
 Scene 6: Cliff's Room  
 Scene 7: Kit Kat Klub (Limbo)  
 Scene 8: Fraulein Schneider's Living Room  
 Scene 9: Kit Kat Klub (Limbo)  
 Scene 10: Cliff's Room  
 Scene 11: Kit Kat Klub (Limbo)  
 Scene 12: Fraulein Schneider's Living Room  
 Scene 13: Herr Schultz's Fruit Shop

Intermission

### ACT TWO

Scene 1: Kit Kat Klub (Limbo)  
 Scene 2: Herr Schultz's Fruit Shop  
 Scene 3: Kit Kat Klub (Limbo)  
 Scene 4: Cliff's Room  
 Scene 5: Kit Kat Klub  
 Scene 6: Cliff's Room  
 Scene 7: Railway Compartment / Finale

## MUSICAL NUMBERS

### ACT ONE

"Willkommen" . . . . . EMCEEE, KIT KAT  
 GIRLS, WAITERS  
 "So What?" . . . . . FRAULEIN SCHNEIDER  
 "Don't Tell Mama" . . . . . SALLY and the GIRLS  
 "Telephone Song" . . . . . THE COMPANY  
 "Perfectly Marvelous" . . . . . SALLY and CLIFF  
 "Two Ladies" . . . . . EMCEE and TWO  
 LADIES  
 "It Couldn't Please Me More," . . . FRAULEIN SCHNEIDER  
 and HERR SCHULTZ  
 "Tomorrow Belongs to Me" . . . . EMCEE and WAITERS  
 "Why Should I Wake Up?" . . . . CLIFF  
 "The Money Song" . . . . . EMCEE and the  
 CABARET GIRLS  
 "Married" . . . . . FRAULEIN SCHNEIDER  
 and HERR SCHULTZ  
 "Meeskite" . . . . . HERR SCHULTZ  
 "Tomorrow Belongs to Me"  
 (Reprise) . . . . . FRAULEIN KOST, ERNST  
 and GUESTS

### ACT TWO

"If You Could See Her" . . . . . EMCEE and the GIRLS  
 "Married" (Reprise) . . . . . HERR SCHULTZ  
 "If You Could See Her"  
 (Reprise) . . . . . EMCEE and BOBBIE  
 "What Would You Do?" . . . . . FRAULEIN SCHNEIDER  
 "I Don't Care Much" . . . . . SALLY  
 "Cabaret" . . . . . SALLY  
 Finale . . . . . CLIFF, SALLY,  
 FRAULEIN SCHNEIDER,  
 HERR SCHULTZ, EMCEE  
 and the COMPANY

## THE PRODUCTION STAFF

DIRECTOR . . . . . RICHARD KLAUTSCH  
 MUSICAL DIRECTOR . . . . . LYNN BERG  
 CHOREOGRAPHER . . . . . MARLA HANSEN  
 CONDUCTOR . . . . . JOHN BALDWIN  
 SCENIC DESIGN . . . . . FLINT WEISSER  
 SCENIC DESIGN SUPERVISOR . . . STEPHEN BUSS  
 COSTUME DESIGN . . . . . ANN HOSTE  
 LIGHTING DESIGN . . . . . FRED HANSEN  
 STAGE VOICE AND  
 DIALECT COACH . . . . . ANN KLAUTSCH  
 TECHNICAL DIRECTOR . . . . . MICHEAL BALTZELL  
 ASSISTANT TECHNICAL  
 DIRECTOR . . . . . MICHAEL HARTWELL  
 DRAMATURG . . . . . BARBARA MARTIN-  
 SPARROW  
 STAGE MANAGER . . . . . FRAN MAXWELL  
 SOUND DESIGN . . . . . TINA HIGLEY

ASSISTANT STAGE MANAGERS . KAM HERVEY  
 TERESE REYNOLDS  
 ASSISTANT TO COSTUME  
 DESIGNER . . . . . SHERI NOVAK  
 COSTUME SHOP FOREMAN . . . . REBECCA HOFFMAN  
 SEAMSTRESSES . . . . . SHARLA MacANDREW.  
 GINNY DiFOGGI,  
 SARA BRUNER,  
 AMBER HARTLEY  
 PROPERTY MASTER . . . . . AMY WELSH  
 PROPERTY CREW . . . . . SONDRA SMITH,  
 AMBER HARTLEY  
 PUBLICITY . . . . . CHARLES LAUTERBACH  
 PUBLICITY ASSISTANT . . . . . JAMES B. FISK  
 GRAPHIC DESIGNER . . . . . RON BAKER  
 SHOP CREW: TA 118 STUDENTS & FRAN MAXWELL,  
 KARENA NIELSON, TERESE REYNOLDS, FLINT WEISS-  
 ER, MICHELLE DENOWH, CLINT CARTWRIGHT



**MASTER OF CEREMONIES . . . SAM READ**
**THE KIT KAT GIRLS:**

MARIA . . . . .	NAOMI KINGSBURY
LULU . . . . .	DENA RUFFALO
ROSIE . . . . .	JENNIFER STOCKWELL
FRITZIE . . . . .	LEAH STEPHENS
TEXAS . . . . .	HELENE PETERSON
FRENCHIE . . . . .	JYMME SUE THOMPSON

**THE BOOK CHARACTERS:**

CLIFF BRADSHAW . . . . .	ISAAC PERELSON
ERNST LUDWIG . . . . .	JARED DALLEY
MAX . . . . .	JERRY BAUSMAN
FRAULEIN SCHNEIDER . . . . .	JOANN "BODIE" STOUT
FRAULEIN KOST . . . . .	KAREN WENNSTROM
HERR SCHULTZ . . . . .	JAMES B. FISK
SALLY BOWLES . . . . .	REBECCA PRESCOTT
CUSTOMS OFFICER #1	
/ BUSINESSMAN . . . . .	RANDY DAVISON
CUSTOMS OFFICER #2	
/ ERDMAN . . . . .	ANDY HOWE

**THE TELEPHONE GIRLS:**

PHONE GIRL # 1 . . . . .	MARY ALLEN
PHONE GIRL #2 . . . . .	MICHELLE LOCKHART
PHONE GIRL # 3 . . . . .	COURTNEY BOHL
PHONE GIRL # 4 . . . . .	MONICA MASON

**THE TWO LADIES:**

LADY,# 1 / SECONDARY KIT KAT GIRL	
. . . . .	JOSIE JENSEN
LADY #2 / SECONDARY KIT KAT GIRL	
. . . . .	MARY ALLEN

**THE SAILORS / WAITERS / TELEPHONE BOYS**

WAITER / VICTOR . . . . .	DAN TAYLOR
FRITZ (SAILOR) / PHONE BOY # 1	
/ WAITER . . . . .	LYNN BERG III
RUDY (SAILOR / PHONE BOY #2	
/ WAITER . . . . .	SEAN MINER
OTTO (SAILOR) / PHONE BOY #3	
/ WAITER . . . . .	CHAD MATHISON
SAILOR #4 / PHONE BOY #4	
/ WAITER . . . . .	JUSTIN ALLEN
PHONE BOY #5 / WAITER	
WAITER . . . . .	JACOB BROLLIER

**THE WORLD OF THE CABARET:**

BARTENDER / CABBIE . . . . .	RICK HOFFMAN
FRAULEIN WENDEL . . . . .	JULIE NORDSTROM
HERR WENDEL . . . . .	KARL NORDSTROM
MAITRE D' . . . . .	GRANT HETHERINGTON
GRETA . . . . .	TERESA FLOWERS
FELIX . . . . .	JULIET JENKINS
BOBBIE . . . . .	JAKE HUNTSMAN

*Cabaret* is produced by arrangement with, and the music and dialogue material furnished by TAMS-WITMARK MUSIC LIBRARY, INC., 560 Lexington Avenue, New York, N.Y. 10022

**PIT ORCHESTRA**

Violin . . . . .	Roberta Rast, principal I
	Stephanie Mecham, principal II
	Christi Fox
	Lisa Michelle
	Liberty Ann Severe
	Rebecca Seaman
	Lynnora Weeks
Viola . . . . .	Corrina McCain, principal
	Melissa Waters
Cello . . . . .	David Affleck, principal
	Sara Affleck
Bass . . . . .	Jim Monson
Flute / Piccolo . . . . .	Melody Bridges
	Carmen McKinney
Oboe / English Horn . . . . .	Joe Carillo
Clarinet / Sax . . . . .	Brooke Adams, alto
	Missy Lyons, alto
	Bryan Crew, tenor
	Eric Bernhardt, baritone

Bassoon . . . . .	Elizabeth Gould
Horn . . . . .	Laura Conley
Trumpet . . . . .	Damon Southerland
	Lew Ulrey
Trombone . . . . .	Jason Groner
	Dustin Perna
Drums . . . . .	Shawn Brown
Percussion . . . . .	Chris Haskell
Guitar / Banjo . . . . .	Krestin Bailey
Keyboard . . . . .	Liz Noland

**STAGE BAND**

Tenor Sax . . . . .	Charlene Williams
Trombone . . . . .	Tricia Beveridge
Bass . . . . .	Paula Youmans
Drums . . . . .	Camille Judd
Piano / Director . . . . .	Anne Nissinen





first impressions

Aveda pure plant products and services for hair, skin, body and lifestyle.

A complete collection of personal care products with the benefits of pure flower and plant essences. A unique approach to personal style that celebrates the individual. An innovative way of looking at beauty. Aveda, pure and effective.

**AVEDA**

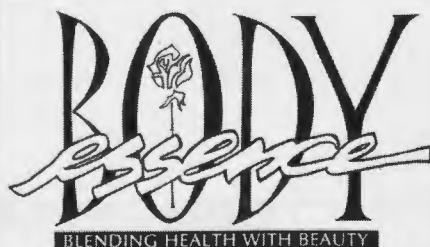
THE ART AND SCIENCE OF PURE FLOWER AND PLANT ESSENCES

Hair Care | Skin Care | Natural Colour™ | Plant Pure-Fume® | Body Care

GRAEBER & COMPANY

A FULL SERVICE Aveda SALON

Please join us on (date) for a special workshop on (topic).  
Call (phone number) to register, or for more information.



Facials • Body Facials •  
Manicures & Pedicures • Color  
Analysis • Eyebrow & Eyelash  
Tints • Make-up Application &  
Personal Lessons • Permanent  
Makeup • Body Massage •  
Body Wraps • Therapeutic Tub  
• Insulation Tank • Waxing,  
face & body • Scalp  
Manipulation & Conditioning •  
Aromatherapy

*We specialize in custom blending  
essential oils for use in aroma therapy  
for several of our services.*

**316 N. 9TH STREET  
BOISE, IDAHO 83702  
208 336 4522**

desert sage  
restaurant & bar

CONTEMPORARY  
AMERICAN  
CUISINE

Redefine Dining  
Original Sophisticated  
Food & Wine  
Informal Elegance

Lunch, Dinner,  
Saturday & Sunday  
Jazz Brunch  
750 W. Idaho Street  
Downtown Boise  
333-8400

For Professional Repair  
& Quality Service

**Blue Rider  
Music &  
Instrument  
Repair**

*King, Armstrong, Benge, Conn,  
Artley, Gehmeinhart*  
**INSTRUMENTS**  
*Pearl Drums, Rico/LaVoz,  
VanDoren, Humes & Berg*



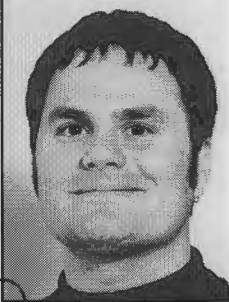
**595 W. Ustick • (208)888-6238  
Meridian, Idaho 83642**



# "CABARET" CAST MEMBERS & BIOGRAPHIES



**MARY ALLEN** [1st Phone Girl, #2 Lady] Junior theatre arts major from Ashton, Idaho. Mary enjoys singing (four years in choir), dancing (fourteen years of lessons), skiing and shopping. She plans to enter a graduate school, preferably on the east coast



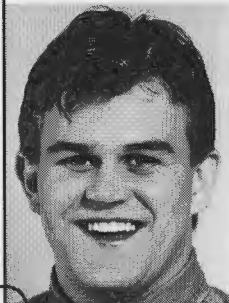
**JERRY BAUMAN** [Max] Graduate student in biology from Twin Falls. Currently applying to veterinary medical colleges with plans to study neurology. Relaxes by snowboarding, rock climbing and playing laser tag. Volunteers as a research assistant at a local cancer research laboratory.



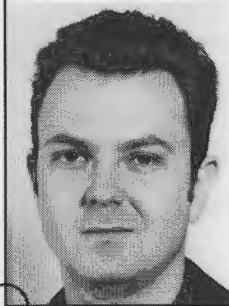
**LYNN BERG III** [Fritz, Telephone Boy #2, Waiter] Freshman music major from Boise. Been in high school musicals and participated in Boise Music Week's production of "Peter Pan." Makes films with friends and plans to pursue theatre in the future.



**COURTNEY BOHL** [Phone Girl #4, Kit Kat understudy] Sophomore from Boise, still looking for a major field of study. Appeared in several musicals. Studies tap, jazz and ballet. Envisions performing in one way or another the rest of her life.



**JARED DALLEY** [Ernst Ludwig] Junior theatre major from Idaho Falls. Lead role in recent BSU production of "Sly Fox." Jared enjoys the thrill of the stage, the harmonious sound of the symphony and a good slasher teen-stalker movie now and then. Also plays classical guitar.



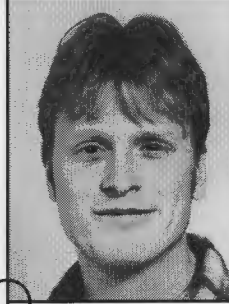
**RANDY DAVISON** [Customs Officer #1, Business Man] Senior theatre arts major from Boise. Numerous appearances in BSU shows plus working for Idaho Theatre for Youth. Strong interests in improvisational comedy. Member of local comedy troupe, Perry Starkley's School of Business.



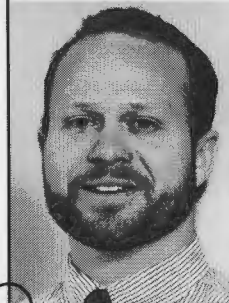
**JAMES B. FISK** [Herr Shultz] Boise resident majoring in both performance and directing. In addition to his work at BSU, James has performed with the Idaho Shakespeare Festival and the Grand Teton Mainstage Theatre. He dedicates this performance to his wife Michelle.



**TERESA FLOWERS** [Greta] Boise junior in theatre arts secondary education. Appeared in fall production of "Sly Fox." Will pursue graduate studies in speech pathology. Happy to announce that she will be married on May 10 to Mr. Joe Uhlenkott!!!!



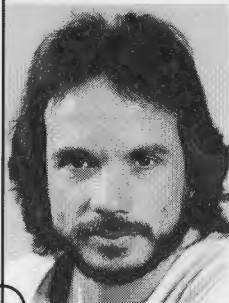
**GRANT HETHERINGTON** [Maitre'D] Junior from Eagle, Idaho is majoring in dramatic writing and plans to be a playwright, screen writer and novelist as well as a performer. Last seen in the BSU show "Sly Fox."



**RIC HOFFMAN** [Bartender, Cabbie] Senior from Ketchum, Idaho majoring in earth sciences. Experience in several musicals but out of show business for five years. "Too long," he says. He graduates in May and his wife expects a girl in June. (Ric is expecting a boy.)



# "CABARET" CAST MEMBERS & BIOGRAPHIES



**ANDREW HOWE** [Customs Officer, Erdmann] Boise theatre arts freshman. Last appeared in "Sly Fox." Has acted in local and national television commercials. Plays guitar, harmonica and sings blues as well as rock and roll.



**MICHELLE LOCKHART** [Phone Girl #3] Junior theatre arts major from Hermiston, Oregon. Has been involved in several BSU productions and served as an intern with the Idaho Shakespeare Festival. Thanks her mom for her love and support.



**D. JAKE HUNTSMAN** [Bobbie] Junior in theatre arts from Iona, Idaho. Enjoys singing, acting and playing the guitar. Hopes to continue performing for as long as possible. After graduation he plans to pursue a graduate degree in acting.



**NAOMI KINGSBURY** [Kit Kat Girl] Freshman from Boise. Principal dancer with Idaho Dance Theatre. Featured dancer in Idaho Shakespeare Festival's "Twelfth Night." Hobbies: skiing, bike riding and late night conversations with friends.



**JULIET JENKINS** [Felix, Kit Kat Understudy] Senior theatre major from Powder Springs, Georgia. Member of BSU track and field team and a 1996 NCAA qualifier. Currently Miss Meridian, she will compete for Miss Idaho in June.



**MONICA MASON** [Phone Girl #2] A theatre arts major in her senior year, Monica came to BSU from Toledo, Ohio. Thanks to Ann Klautsch, BSU instructor in stage voice, she wants to attend a graduate program and become a professional vocal coach.



**JOSEPHINE JENSEN** [Lady #1, Secondary Kit Kat Girl]. Senior from Pocatello majoring in vocal music. Has performed in several Idaho and Wyoming theatre companies. After leaving BSU she plans to continue her music and theatre studies and some day open her own musical theatre.



**CHAD MATHISON** [Otto, Waiter] "Freshperson" from Boise majoring in theatre arts. Experience in high school Shakespeare productions of "Twelfth Night" and "The Tempest." Is pleased with his present dreams and hopes they all come true.



**JEFFREY DEAN LAWRENCE** [Phone Boy #5, Waiter] BSU theatre graduate from Emmett, Idaho in his fourth appearance on the Morrison Center main stage. Plans to move East soon to pursue a professional career.



**SEAN L. MINER** [Rudy, Waiter, Phone Boy #1] Freshman from Meridian majoring in theatre education. Experience in high school productions of musicals and Shakespeare. Hopes to succeed in theatre and with his singing group, the Fairlanes.



# "CABARET" CAST MEMBERS & BIOGRAPHIES



**JULIE NORDSTROM**  
[Fraulein Wendell] Senior from Twin Falls in the theatre secondary education program. Loves cheesy 80's music and groovy 70's architecture Expert signer with A. A. S. from Ricks College.



**KARL NORDSTROM**  
[Herr Wendell] Junior theatre major from Hailey, Idaho. Recently seen in BSU production of "Sly Fox." Loves the outdoors and hiking. Would like to learn to play the guitar and sing. Dreams of teaching theatre at the College of Southern Idaho.



**ISAAC N. PERELSON**  
[Cliff Bradshaw] Boise senior in theatre arts/performance. Isaac has played over thirteen roles in the past three and a half years in such shows as "Praying Mantis," "Two Booths and a Lincoln" and "A Funny Thing Happened on the Way to the Forum."



**HELENE PETERSON**  
[Kit Kat Girl] Has been a principal dancer with Idaho Dance Theatre for the past five years. Currently the Education Coordinator for the Idaho Shakespeare Festival. Graduate of the University of Colorado at Boulder with degree in international affairs.



**REBECCA PRESCOTT** [Sally Bowles] Senior from Jerome, Idaho majoring in both theatre and music. Extensive university work plus appearances with the Idaho Shakespeare Festival and Idaho Theatre for Youth. Busy auditioning for graduate schools at present.



**SAMUEL READ**  
[Master of Ceremonies] Senior in theatre arts from Pocatello. Has worked for such professional theatres as the Idaho Shakespeare Festival and Grand Teton Mainstage. Twice nominated for the Irene Ryan Award of the American College Theatre Festival.



**DENA J. RUFFALO**  
[Kit Kat Girl] Graduate of University of Calgary in art history and dance. Came to Boise three years ago from Canada after marrying an American. Studying dance with Marla Hansen. Has recently tried her hand at choreography.



**LEAH STEPHENS**  
[Kit Kat Girl] Currently immersed in her fifth season as a principal dancer with Idaho Dance Theatre. Teaches ballet, modern and tap dancing at Dance Pros. "In her spare time she practices the ancient art of Tai Chi, knitting, barefoot water skiing and kissing Matt."



**JENNIFER PAGE STOCKWELL**  
[Rosie, Kit Kat Girl] Junior theatre major from Boise. Played Gymnasia in "A Funny Thing Happened on the Way to The Forum," Belle in "Ah, Wilderness!" and several roles in BSU Showcase productions.



**BODIE STOUT** [Fraulein Schneider] Sophomore theatre major from Boise. Excited to be in her first university show. Hobbies and interests include swimming, cycling, movies, snow shoeing, skiing and loving her cat and three Irish wolfhounds.





**DANIEL CARL TAYLOR**  
[Waiter, Victor] Junior music education major from Vale, Oregon. Holds Campbell Memorial and Hartzler music scholarships. Likes spending time with his wife and nineteen month old daughter and playing computer adventure games.



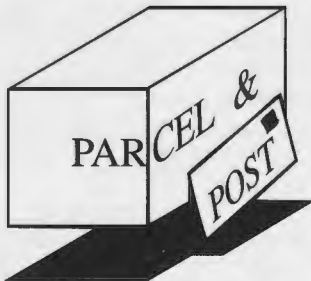
**JYMME SUE THOMPSON**  
[Kit Kat Girl] Senior from Montpelier, Idaho on hiatus from her theatre major in order to take courses in BSU School of Business Technology. Enjoys dancing under the instruction of Marla Hansen, skiing and staying real busy.



**KAREN WENNSTROM** [Fraulein Kost] Senior theatre arts major from Boise. Currently president of the BSU Theatre Majors Association. Has acted in numerous BSU productions and performed with the Grand Teton Mainstage in Jackson, Wyoming and the Idaho Shakespeare Festival.

**NOT PICTURED**

**JACOB BROLLIER**  
[Waiter] Theatre Arts major from Boise in his sophomore year. Likes skiing, snow boarding and hiking. He works as a smokejumper in the summer "as a fun hobby and job." Last seen in BSU production of "Sly Fox."



- Custom Packing
- UPS, U.S. Mail
- Overnight Services
- Bulk Mail
- Money Grams
- Private Mailboxes
- Package Pickup
- FAX

1810 State ST., Boise  
**342-7678** ■ fax 342-4996  
package pickup 342-7679  
7:30-6'M-F; 10-2 Sat

Fabulous Costumes

Incredible Stuff

Seeing is Believing

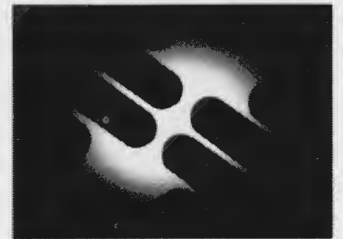


**NEW LOCATION**

3777 Chinden Blvd.

343-9399

## Idaho School of **MASSAGE THERAPY**



Ruth Haefer, C.M.T.  
Cindy Langston, C.M.T.

- Treatment Tailored To Individual Needs
- Classes & Workshops for Personal Growth & Professional Application
- Swedish, Connective Tissue, Sports, & Reflexology
- 150 hr. to 500 hr. Certification

*Celebrating Freedom of Movement*

5353 Franklin Rd.  
Boise, ID 83705 • 343-1847



PO BOX 8322 BOISE, IDAHO 83707

(208) 384-1707 NINA LILIENTHAL



**MOUNTAIN STATES  
HAND CLINIC**  
Troy B. Watkins, Jr., M.D.  
Surgery of the Hand

333 North First, Suite 240  
Boise, Idaho 83702

(208) 343-2555



Come find  
yourself in  
our  
furniture.



Whatever your style, Expressions Custom Furniture can help you bring it home. With extensive frame and exciting fabric choices, you're sure to find a look that's you. And we'll deliver it to your door within 45 days. The finishing touch? An inspired collection of unique accent pieces and accessories. Let us introduce you to Expressions.



Downtown Boise • 824 W. Idaho St. • (208) 385-7940 • (800) 608-7940  
Across Town From The Mall  
©1995 Expressions in Fabric, Ltd.

## Idaho's Largest Selection GUITARS! AMPS! DRUMS! P.A. SYSTEMS!

*Peavey, Gibson, Marshall, J.B.L.,  
Crown, E.V., Studiomaster, Klipsch,  
Shure, Ibanez, Jackson, B.C. Rich,  
Epiphone, Tobias, Aria Pro, Ovation,  
Simon & Patrick, Takamine, Seagull,  
DigiTech, Alesis, Yamaha, Premier,  
Ludwig, Tama, D.W., Tascam, Selmer,  
Bach, Getzen, Canadian Brass*

**Authorized Dealer — Most Major Brands  
Trade-Ins Welcome — Rentals — Lessons**

## DORSEY MUSIC

*Since 1969*

**BOISE - 5015 W. State, Ph. 853-4141  
(between Lake Harbor & Collister)**

**NAMPA - Next to Karcher Mall, 466-5681**



*Mercedes-Benz  
E-Class*

**LYLE PEARSON**  
— company

**...Where Auto Drive Ends & Choices Begin!**

**351 Auto Drive • Boise Motor Village • Boise, ID  
208-377-3900 or 1-800-621-1775**

APRIL 4<sup>TH</sup> - 6<sup>TH</sup>  
FRI. & SAT. AT 8:00 - SUN. AT 2:00



BSU Special Events Center

Idaho **INT** Theatre

Tickets at Select-A-Seat • Sponsored by Keybank & BSU Theatre Arts Dept.



# A PROVEN COMMODITY, STUDENT DESIGNERS

by Stephen R. Buss

Boise State University has been very fortunate to have student designers who are willing and capable to design for the main stage season. So far this season I have had the opportunity to work with two outstanding student designers, Josie Jensen, who designed costumes for "Sly Fox," and tonight's scene designer for "Cabaret," Flint Weisser. Flint is a senior and Josie is a junior.

The Department of Theatre Arts encourages students who are acceptable to the design staff, to design in the area of their choosing. "The opportunity to design and see the project through to completion," said department chairman Dr. Kent Neely, "not only gives the student an outstanding experience, but also allows our productions to have a fresh and often an exciting new look."

Flint Weisser began his university career in the visual arts as a painter and sculptor. Soon he had gravitated to the theatre department where he found great satisfaction in working on productions. "I found the nature of working from the initial conception through the molding of the project and the collaborative nature of theatre to be very invigorating," notes Flint. "I believe the collaborative process of theatre improves the initial concept and design. I did not realize the importance of design until I had taken a directing class. I quickly found that the visual elements of the production completed the 'whole world' of the play as I began to plan the directorial concepts. I knew then that design, especially with my concept of theatre and my backgrounds, is my future," he said.

Flint notes that this opportunity to design a main stage production, especially on the Morrison Center stage, is a rare opportunity. "Students at Boise State University are lucky to have this kind of opportunity as an undergraduate," he said.

"I love Cabaret," its dark, unstable world and its mature look at an unstable time in modern history. I usually dislike musicals and their romanticism, however I find that this production is an exception. I have designed the stress beams that cover the stage, to reinforce the image of the precarious world that these people live in. This is also a temporary world that will shortly change to a darker and more sinister existence," he remarked.

Mr. Weisser will graduate in May at which time he plans to continue his theatre studies in Europe before returning to the professional theatre or graduate school at a later date.

Although I teach design and design every semester, I am continually reinvigorated as I observe a student complete the realization of a production project. Although the talent is recognized in classroom projects and the student is receptive to the classroom challenge, the actual completion upon the stage of a design is the ultimate learning and motivational tool. Thank you Flint and Josie for fully realized design concepts.



**Idaho Performing Arts**

Founded as IJA in 1989

**The BSU Theatre Arts Department**

is most grateful to Idaho Performing Arts (formerly IJA Productions) for their generous support of Scene Change.

Scene Change is the Theatre Arts Department outreach education program serving Idaho's secondary schools. A featured part of Scene Change is the annual Idaho Invitational High School Festival which coincides with "Cabaret." The department welcomes over 300 students and teachers from seventeen Idaho high schools as they participate in workshops and presentations.

**IPA**  
 Sonna Building, Suite 314 Boise, ID 83702  
 343-6567 • fax 343-0580 • e-mail ijaarts@aol.com

the 342-4222 ★ 646 FULTON

**★ FLICKS ★**

- cinemas
- cafe
- videos
- fun

★ **Cinemas** - two modern, comfortable auditoriums, showing the latest in foreign, independent and art films.

★ **Video Rentals** - a collection of over 1600 great titles.

★ **Cafe** - gourmet counter service. Relax by the fire in winter and on the patio in spring & summer.

★ **Fun** - desserts, beer & wine, espresso bar, live music on the patio and community events.

**Gift Certificates**  
**Video Cards and Movie Passes**  
**"The Gift That Always Fits!"**



Bringing

# EARTH's Resources to LIFE



“AROUND HERE, THE POTATO LIVES UP TO  
ITS FULL POTENTIAL... AS FOOD, FUEL, PLANT  
NUTRIENTS AND MORE... AN APPROACH  
WE CALL TOTAL RESOURCE UTILIZATION.”

—Joan Cloonan, Vice President Environment & Regulatory Affairs,  
J.R. Simplot Company

**Simplot.**

*Shakespeare*

Students/Adults  
Educators

## SEASON TICKETS

- The Taming of the Shrew
- Macbeth
- The Merchant of Venice
- Private Lives by Noel Coward

Save money  
on a full  
summer of  
great  
theater!

*Idaho Shakespeare Festival  
Season runs June-September 1997*

**323-9700**

*A  
bank  
that's music  
to your  
money.*



Member F.D.I.C.





# This is the way many people deal with HIV.

A lot of people don't think they have to worry about HIV. But the truth is, anyone can get HIV infection if they are sharing needles and syringes or having unprotected sex with an infected person. Do you know all you need to know about the person you're having sex with? Do you use latex condoms correctly every time you have sex?



**For more information about HIV prevention call the  
National AIDS Hotline at 1-800-342-AIDS (2437).**

**Servicio en Español: 1-800-344-7432**

**HIV is the virus that causes AIDS.**