



BOISE STATE INTERNATIONAL INSIDER

Making Connections | *Building Global Community*

December 11, 2013

Coming Events & Activities

Every Wednesday, 3:30 to 5:00pm - Coffee & Conversation in the Student Diversity Center

Drop-in Career Advising in the Student Diversity Center (SDC) schedule has changed! Becca Dickinson of the Career Center will be present at Coffee and Conversation each week.

December 11th – International Student Dinner (See details p.5) **TODAY**

December 18th – Final's Relief Coffee and Conversation! (See details p.3)

December 23 thru' 27 – ISS will be closed for the Holidays

February 3rd – Ship Waiver reminder. (See details p.2)

Congratulations, Graduates!

ISS wants to congratulate all international (and non-international) graduates! We wish you all the best on your next adventure in life.

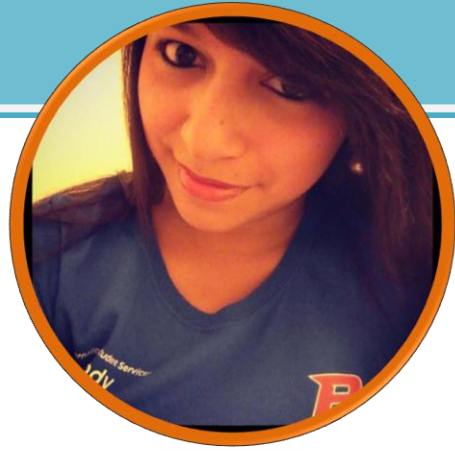
Please stay in touch and let us know if you need anything.



Remembering Fawaz Alsubaie

In honor of Fawaz who passed away on November 24, the Saudi Student Club is organizing a food drive. The food collected will be donated to the Idaho Food Bank in Fawaz's name. Students are invited to bring non-perishable food items (canned foods, pasta, rice, etc.) to the ISS Front Desk by Friday, December 13th at 5pm.

You did it!
Congratulations



Farewell to Cindy Fernandez

ISS would like to thank Cindy for her wonderful service to ISS. Cindy has worked for ISS for two years. She has been of great assistance to staff and students alike. Cindy has shared her ideas with us and helped us develop new procedures and protocols. Cindy will be *dearly* missed by the ISS staff and the many students she has served. We are proud of Cindy, as she has worked very hard to complete two majors (Spanish and French) to graduate this semester. We wish Cindy all the best and we know she will be successful in all her future endeavors.

STUDENT HEALTH INSURANCE PLAN (SHIP)



STUDENT HEALTH INSURANCE PLAN

Have you filled your SPRING 2014 HEALTH INSURANCE WAIVER APPLICATION?

THE DEADLINE IS: FEBRUARY 3, 2014

HEALTH INSURANCE AND BILLING
(208) 426-2158 • healthservices.boisestate.edu/insurance



"Final's Relief C and C"

Join the ISS staff on Wednesday, December 18 to take a break from studying or celebrate the end of a great semester

Immigration Note

If you plan to travel outside of the US during the Winter break, be sure to get your I20 signed if it has been more than 9 months since your last travel signature. Remember to be registered for 12 credits (9 for grad students) in the Spring semester and allow enough time for ISS staff to complete this process. We request a minimum of 48 hours to get your I20 ready.

ISS Jump Time fun!!

Students jumping and playing at Jump Time with the ISS staff!!



Check out this YouTube video of students having fun at Jump Time!

<http://www.youtube.com/watch?v=Aej4wmSuuL4&feature=youtu.be>





STUDY NIGHT WITH SWE AND THE WC

**Tuesday, December 10
5:30 - 7:30p.m.
Bishop Barnwell Room, SUB**

Are you looking for a place to study the week before finals? Lay out your notes, enjoy delicious snacks and win giveaways. Study space will be available until 10:00p.m. Cosponsored with the Society of Women Engineers.

WOMENSCENTER.BOISESTATE.EDU

For accommodations please contact the Women's Center at (208) 426-4259.

B
BOISE STATE UNIVERSITY
STUDENT AFFAIRS



INTERNATIONAL STUDENT DINNER WEDNESDAY, DECEMBER 11TH, 5:30PM

Come meet friends, eat, and have fun at our monthly dinner for international students. We'll be playing some games after dinner and enjoying Christmas cookies for dessert!

Dinner: Potato corn chowder (a soup), salad, rolls, ice cream, and Christmas cookies.

When: 5:30 on Wednesday the 11th. Meet at the Student Diversity Center at 5:10pm (*after Coffee and Conversation*) to walk over with us!

Where: 1025 Belmont St., at the intersection of Belmont and Denver, a block south of the stadium and next to the Key Bank on Broadway.

We love international students and want to help you, so it's free!
Feel free to bring friends!

Thanks,

Steve Dunne
steve@isiboise.org

The Boise State International Insider is a weekly feature of International Student Services, in the Student Diversity Center.

Christy Babcock

Associate Director
cbabcoc@boisestate.edu

Stefanie Stauber

Sponsored-Student Support Coordinator
stefaniestauber@boisestate.edu

Merrilou Burris

Management Assistant
merrilouburris@boisestate.edu

Phone: 208-426-3652

Office Location: Student Union Bldg, 2nd floor, Room E2433

Mailing Address: 1910 University Drive, Boise, ID 83725-1335



International Student Services
ISS.BOISESTATE.EDU



BOISE STATE UNIVERSITY
STUDENT AFFAIRS