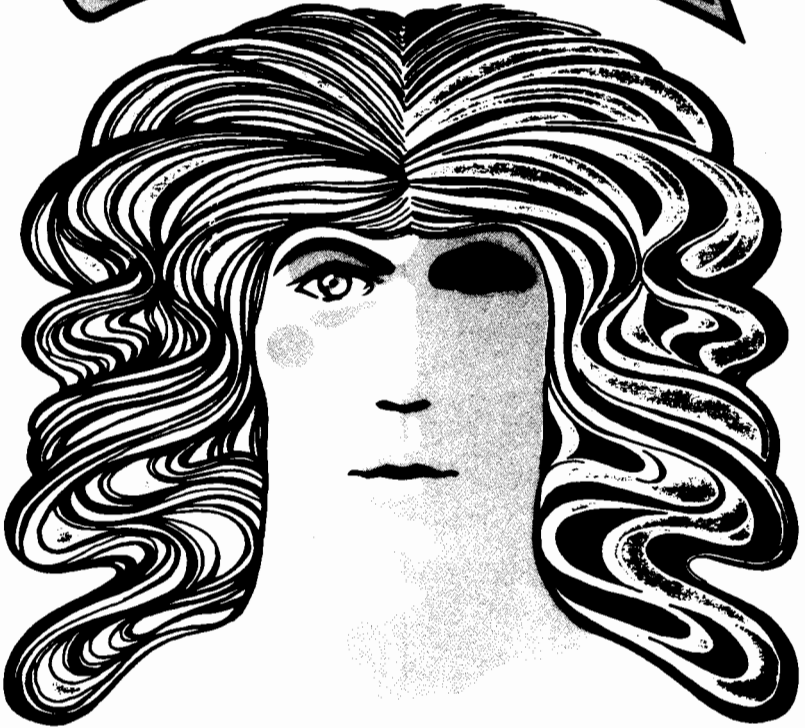


620

831-8

# GODSPELL



A Musical Based Upon  
The Gospel According to St. Matthew

August 31 - September 3, 1983  
Special Events Center  
8:15 p.m.

**Boise State University  
DEPARTMENT OF THEATRE ARTS**

**presents**

**GODSPELL**

**Conceived and Originally Directed by John Michael Tebelak**

**Music and New Lyrics by Stephen Schwartz**

**Originally Produced on the New York Stage by  
Edgar Lansbury, Stuart Duncan, Joseph Beruh**

**THE COMPANY**

**Jesus ..... Hud Hudson**

**John, The Baptist/Judas ..... Thaddeus Valdez**

**Tara Blanton-Hughes**

**Jeana Nelson**

**Tom Favillo**

**Cristina Poole**

**Fred L. Gentoni**

**Janet Summers-Eskew**

**Lisa Meredith**

**Monte Tucker**

**This performance is presented through special arrangement with  
THEATRE MAXIMUS, 1650 Broadway, New York, N.Y. 10019**

## PRODUCTION STAFF

Director .....	Sandy Cavanaugh
Choreographer .....	Lori Jukich-Head
Musical Director .....	Linda Gilmour
Set Design .....	Chris Anderson
Light Design and Effects .....	Jonathan Langrell
Costume Design, Properties .....	Steve Frank
Stage Managers .....	Joy Ooley Peggy Thompson
House Manager .....	Susan Slade
Assistant Director .....	Joy Ooley
Rehearsal Assistant .....	Ann Marie McNary
Understudy .....	Nancy Nyman
Box Office .....	Clydeene Babcock

## MUSICIANS

"Spike" Ericson .....	Lead Guitar
Joe Jacoby .....	Rhythm Guitar
Linda Gilmour .....	Keyboard
Rayanne Gustafsen .....	Bass Guitar
Randy Black .....	Drums

## PRODUCTION CREWS

**Lights**  
Sue Lewis

**Photography**  
Coenraad Abas  
Chuck Scheer

**Sound**  
Louanne Blome  
Ron Wilson  
"Spike" Ericson

**Publicity**  
C.E. Lauterbach

### Special Acknowledgements:

Anvil Fence Company, Al's Tires, Matt Mathews, Frank Heise, Disguise the Limit, Dr. and Mrs. David S. Taylor for donation to costume collection.

**Boise State University  
1983-1984 THEATRE SEASON**

Aug. 31-Sept. 3	GODSPELL
Oct. 12-15	DEATH OF A SALESMAN by Arthur Miller
Nov. 16-19	NO SEX, PLEASE, WE'RE BRITISH by Anthony Marriot and Alistair Foot
Dec. 7-10	SHOWCASE PRODUCTION I — Title to be announced
Dec. 9-10	DANCE CONCERT I
March 1-4	JOAN OF LORRAINE by Maxwell Anderson
April 18-21	LIFE WITH FATHER by Howard Lindsay and Russell Crouse
April 27-28	DANCE CONCERT II
May 2-5	SHOWCASE II — TITLE TO BE ANNOUNCED

**Shows will be produced in the Special Events Center and the Subal Theatre. The box office will be open a few days before each opening night during the hours of three to six p.m. weekdays. For information or reservations, call 385-1462.**



**DEPARTMENT OF THEATRE ARTS STAFF**

Stephen R. Buss, B.A., M.A., Ph.D. ....	Designer, Director
Robert E. Ericson, B.S., M.A., Ph.D. ....	Director
Charles E. Lauterbach, B.A., M.A., Ph.D. ....	Director, Chairman
William Shankweiler, B.F.A., M.A., Ph.D. ....	Director
Barbara Boylan .....	Adjunct Faculty, Dance
Eloise Bruce, B.A., M.A. ....	Adjunct Faculty, Children's Theatre
Jon Irwin, B.A., M.F.A. ....	Adjunct Faculty, Acting
Carol Spafford .....	Secretary