

Boise Junior College A CAPPELLA
CHOIR presents



B. J. C. Auditorium

8:15 P. M.

March 6, 7, 8, 1952

❖-----❖
- Home Appliance Service -

AUTHORIZED

BENDIX & WESTINGHOUSE SERVICE

1519 No. 13th

PHONE 8824

Boise, Idaho
❖-----❖

AMERICAN LINEN SUPPLY CO.

FURNISHERS OF CLEAN LINEN

1420 Grove Street

Boise, Idaho
❖-----❖

Your Friendly Ford Dealer's

Boise Auto Mart, Inc.

2406 Fairview Avenue

Boise, Idaho
❖-----❖

For Tops in Entertainment

Dial
950

K D S H

Every Day

Your Popular CBS Station
❖-----❖

ORVILLE JACKSON

EAGLE

E-a-r-l-y B-i-r-d

Phone Eagle

IDAHO

Drug Store

4-6352

OPEN EVERY DAY BEFORE 7 A. M. (INCLUDING SUNDAY)
❖-----❖

Compliments of

Finch's Stationery

211 NORTH TENTH STREET

BOISE
❖-----❖

Sib Kleffner

Idaho's Favorite Sport Spot

818 JEFFERSON ST.

BOISE, IDAHO

PHONE 3877

Prompt and Courteous Service

Phone 600

BLACK & WHITE CAB CO.

DUNKLEY MUSIC

The Finest in Music

MAGNAVOX

RADIO PHONOGRAPH

TELEVISION

Mason & Hamlin - Knabe - Story & Clark Pianos

KITTY-CORNER FROM ADA THEATRE

-- Your Exclusive Kelvinator Dealer --
in Boise

GOOD HOUSEKEEPING SHOP

PHONE 8866

11th and State Sts.

Boise, Idaho

WHEN IT COMES TO ICE CREAM—

MAKE MINE DELICIOUS HOME-MADE

Country Style Ice Cream

ADAMS LOCKERS

Phone Eagle 4-6231

Eagle, Idaho

Made Fresh in
Our Own
Shop



Jefferson
near
Ninth

Morrison-Knudsen Company, Inc.
CONTRACTORS and ENGINEERS

319 Broadway

Phone 6800

Congratulations--

TO THE CAST AND MANAGERS

from

Gem State Optical Company

Dispensers of Eye Glasses
of Distinction

618 Eastman Building

Boise, Idaho

Greetings and Good Wishes

to Students and Faculty of Boise Junior College

for the 1952 production of "BACH to BOOGIE"

YMCA, 11th & Idaho and YWCA, 8th & Washington

Carl's Super Market

PHONE 4449

706 ORCHARD

BOISE - IDAHO

Johnson Floral Company

"Say It With Flowers"

PHONE 180 or 6328

111 N. Ninth Street

Boise, Idaho

Boise Music and Appliance

EVERYTHING IN MUSIC

211 North 8th St.

Phone 249

BOISE · IDAHO

Get It Done with **DUNN**

Efficient, Friendly Service

REAL ESTATE LOANS and SALES

All Types of Insurance

C. RAY PETERSON WALLY WALKER C. BRUCE YOUNG

CHAS. O. DUNN AGENCY

204 North 9th

Phone 6218

BOISE · · IDAHO



TATE BROS.

Triangle

Dairy

GRADE A MILK

Milk in Cream Top Bottles

PHONE 360

BOISE, IDAHO

STATE BEAUTY SALON

Complete Beauty Service

—EVENING APPOINTMENTS—

117 North 10th St.

Phone 3904

BOISE · · · ·

IDAHO

*Music is the greatest good that mortals know,
And all of heaven we have below.*

—From "Song for St. Cecelia's Day," by Joseph Addison

INTRODUCTION

Everyone has his favorite tune and type of music. Practically everyone appreciates music. Each has his own means of satisfying his musical desires. Many types of music, designed to meet with your approval, no matter what your taste, will be represented in "BACH to BOOGIE."

In 1947 Student Musicians Gib Hochstrasser, Ellomae Holden, and Bernice Bauer originated the basic idea for "Bach to Boogie." Since the first successful performance "Bach to Boogie" has been presented annually for the purpose of obtaining funds to help finance the B. J. C. A Cappella Choir's Annual Spring Tour.

Although our program is primarily student talent, student planned, and student directed, the willing aid received from Mr. Bratt and the B. J. C. Administration cannot be over-emphasized.

We hope you enjoy the combined efforts of B. J. C., the Music Department, and the students.

PRODUCTION STAFF

Production Manager	- - - - -	JIM JEWELL
Director	- - - - -	MARLESE FREEMAN Assistant, SID NELSON
Arranger and Accompanist	- - - - -	FRED GHERTLER
Costuming	- - - - -	SUE FREEMAN Assistant, MYRTLE SIEBE
Lighting and Staging	- - - - -	RONALD COCHRAN
Makeup	- - - - -	SHIRLEEN SHAFFER
Finance Manager	- - - - -	BOB FULKERSON
Tickets	- - - - -	BOB COLE
Publicity	- - - - -	RUTH POND
Advertising-	- - - - -	SHARON WHITE
Programs	- - - - -	SHIRLEEN SHAFFER
Printing	- - - - -	BOB COLE AND BOB FULKERSON
Theme	- - - - -	GEORGINA HOPKINS
Stage Crew	- - - - -	DICK FROST AND CHAD WHITE

No Encore



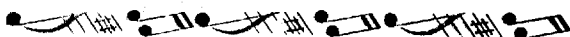
PART I

- “Wondrous Cool Thou Woodland Quiet” - - - - Choir
 BRAHMS
- “Oh, Sinner Come, Thou Sins to Mourn” - - - - Choir
 BACH CHORALE
 B. J. C. A CAPPELLA CHOIR
 C. G. BRATT, *Director*
- “At Evening” - - - - Terry Wagstaff
 PIANO
- “Can’t Help Lovin’ That Man of Mine” - - Myrtle Siebe
 “SHOW BOAT”
- “My Hero” - - - - Marliese Freeman and Sid Nelson
 CHOCOLATE SOLDIER
- “Where E’re You Walk” - - - - Paul Ward
 “SEMELE” *by Handel*
- “Scherzo” - - - - Eunice Watson and Dick Blinn
 Cello Duet — KUMMER
- “Don’t Go in the Lion’s Cage Tonight” - - - RUTH POND
 BOB EMMETT, BOB WATSON, CHAD WHITE, JIM JEWELL
- “Love Is Where You Find It” - - - - ANNETTE BLACK
 HELEN HALL, SUE FREEMAN, TERRY WAGSTAFF
 BARBARA COMPTON, MARY KNAPTON, SHARON WHITE
 Don Luce and Dorla Hoganmiller - - Semi-Modern Dance

PART II

- “My Heart at Thy Sweet Voice” - - - - LaRae Dunn
 Aria from Opera, “SAMSON AND DELILAH”
- “On Top of Old Smoky” - - - - BOB BAKES, Banjo,
 PAT GIBSON, Guitar; BOB COLE, Orator;
 STEVE HADLEY, JERRY WHITE, BOB WATSON
- “St Louis Blues” - - - - GEORGINA HOPKINS
- “Circus Days” - - - - Brass Sextette
 BOB FULKERSON, RAY MOORE, CLIFF JACKSON,
 EUGENE ERTEL, LEON VOSTREZ, GLEN HOSTETLER
- “All the Things You Are” - - - - RONALD COCHRAN
- “Jazz Impromptu” - - - - Jazz Combo
 FRED GHERTLER, GIB HOCHSTRASSER, KEITH BLACK
- “Una Furtina Lagrima” - - - - BARRY BINNING
 Aria from Opera “L’ELISO D’AMORE”

(Over)



“VARSITY DRAG”

Sharon White, Steve Hadley, Sue Freeman,
 Don Luce, JoAnn Hartzler, Sid Nelson,
 Shirleen Shaffer, Chad White

CAST

JUDGE - - - - - REX FRAZER
 DEFENDANT - - - - - GREYSON ANDRIST
 BAILIFF - - - - - BARRY BINNING
 JURY - - - - -

Mary Knapton, Charlotte Parker, Barbara Compton,
 Lucille Spackman, Carma Murdock, Diane Chester,
 Madelon Hannah, Mary McCollum, Bonnie Cady,
 Jerry White, Dick Frost, Bob Emmett, Bob Cole,
 Ed Hedges, Bob Quinly, Bob Watson

CHOIR PERSONNEL

Sopranos:

Margaret Bailey, Marliese Freeman, JoAnn Hartzler,
 Dorla Jo Hogenmiller, Carma Murdock, Shirleen
 Shaffer, Colleen Shanahan, Ruth Pond, Lucille Spack-
 man, Sharon White, Annette Black, Barbara Compton,
 Mary Knapton, Peggy Wood, Charlotte Parker.

Altos:

Bonnie Cady, LaRae Dunn, Sue Freeman, Helen Hall,
 Madelon Hannah, Myrtle Siebe, Terry Wagstaff, Mary
 McCollum, Diane Chester, Georgina Hopkins.

Tenors:

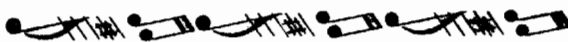
Bob Cole, Bob Emmett, Bob Fulkerson, Jim Jewell,
 Sid Nelson, Fred Ghertler, Don Luce, Paul Ward,
 Bill Worley, Barry Binning.

Basses:

Bob Bakes, Ronald Cochran, Rex Frazer, Jerry White,
 Bob Watson, Wayne Personette, Greyson Andrist,
 Dick Frost, Steve Hadley, Ed Hedges, Bob Quinly,
 Charles Riddle, Chad White.

OUR APPRECIATION TO

Mr. Bratt - - - - - Advisor
 Mr. Gottenberg - - - - - Advertising
 Mr. Wennstrom, Del Andrews, South Junior High - - -
 - - - Stage Equipment
 Mrs. J. R. Winger - - - - - Dancing
 Miss Shirley Anderson - - - - - Dancing
 Our Advertisers - - - - - Please patronize them



HON MOTOR CO.

KAISER-FRAZER

Factory Service, Parts and Accessories

Henry

701 Capitol Blvd.

Boise

"Say It with Flowers"

Boise Floral Company

PHONES 4848 and 4849

317 North 8th Street

BOISE

IDAHO

TEENAGERS---

Having Trouble with Your Parents?

PARENTS-----

Having Trouble with Your Teenagers?

Listen to

"Mind Your Manners"

KIDO

2:30 P. M.

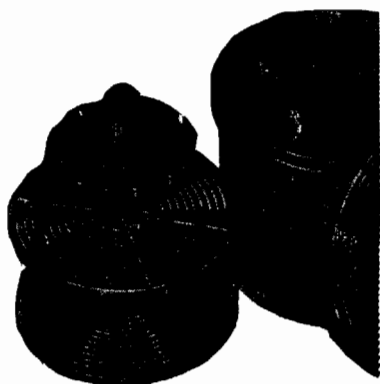
SATURDAYS

Always
Kind
To
Your
Clothes

PHONE 4411

BOISE CLEANERS

1218 Capitol Boulevard
Conveniently Located



It's-

C. C. Anderson's

for

RECORDS and BOOKS

Choice Selection

Top Artists

THE JEWEL BOX

NEIL H. CARLTON Diamonds - Silverware TELEPHONE 350

"The Finest Watches in the World"

HAMILTON - BULOVA - ELGIN - GRUEN - HELBROS
1010 MAIN ST., BOISE, IDAHO

JENSEN MOTOR SALES

DISTRIBUTORS FOR HILLMAN CAR

HEADQUARTERS FOR FOREIGN CARS — SALES & SERVICE

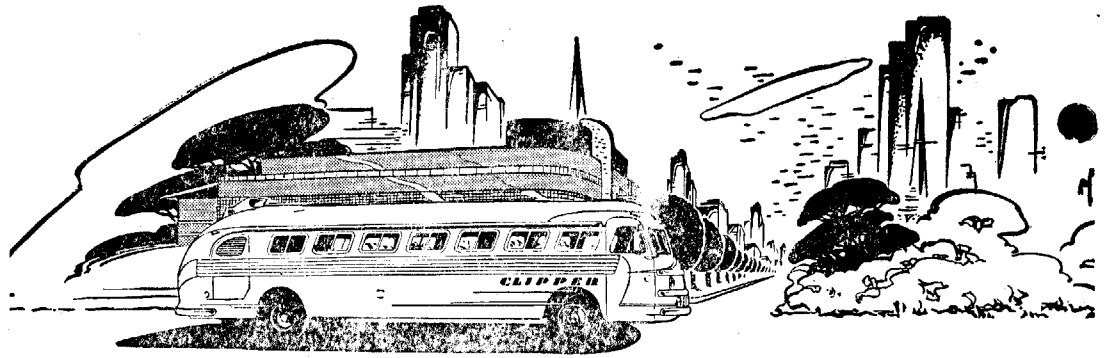
PHONE 3974 or 6854-J

1119 GROVE ST.

BOISE, IDAHO

IDAHO POWER

Electricity...Does So MUCH-Costs So LITTLE!



NORTHWESTERN STAGE LINES, INC.

THE SCENIC SHORT ROUTE

Travel the Scenic Route via McCall and Grangeville
to Lewiston, Moscow and Spokane

DE LUXE COACHES FOR CHARTER SERVICE

Office Phone 2068

Depot Phone 4747

1121 GROVE STREET

BOISE, IDAHO