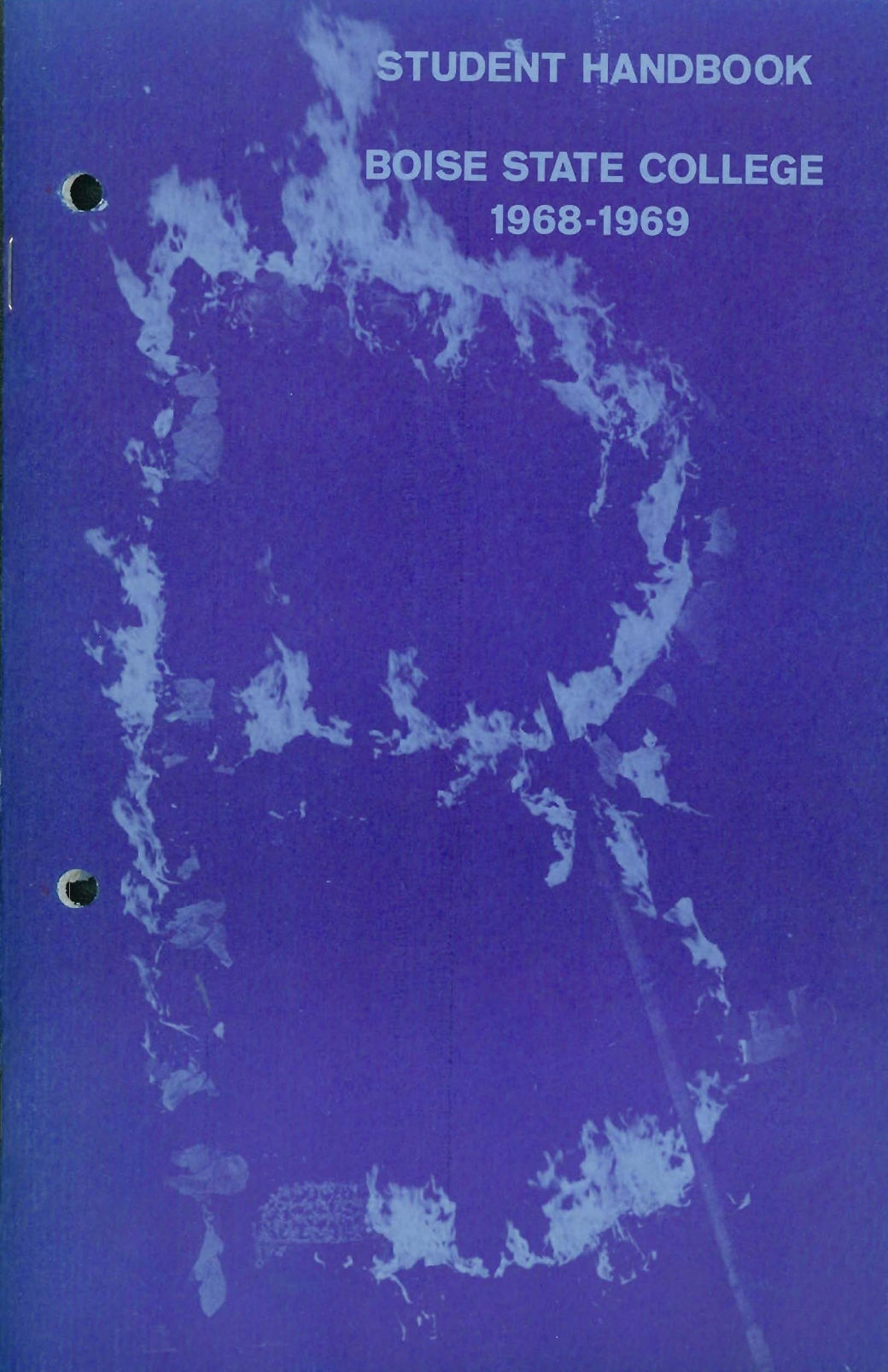


STUDENT HANDBOOK

BOISE STATE COLLEGE
1968-1969



*"There are obviously two educations.
One should teach us how to make a
living. The other should teach us how
to live."*

— James Truslow Adams



STUDENT HANDBOOK

**BOISE STATE COLLEGE
1968-1969**



AT THE BEGINNING . . .

The freshman year of college for many can mean a step forward or a step backward. The sophomore and junior years can be additions or subtractions and the senior year can be an accomplishment of a lifetime or an immeasurable defeat. This is your college that you can learn about through your student handbook. It tells of the facilities, organizations, services, and student government that was created for you, the student.

It is the editors' hope the enclosed information will help you with the minor questions and leave extra time to tackle the major problems.

Lynda Baril

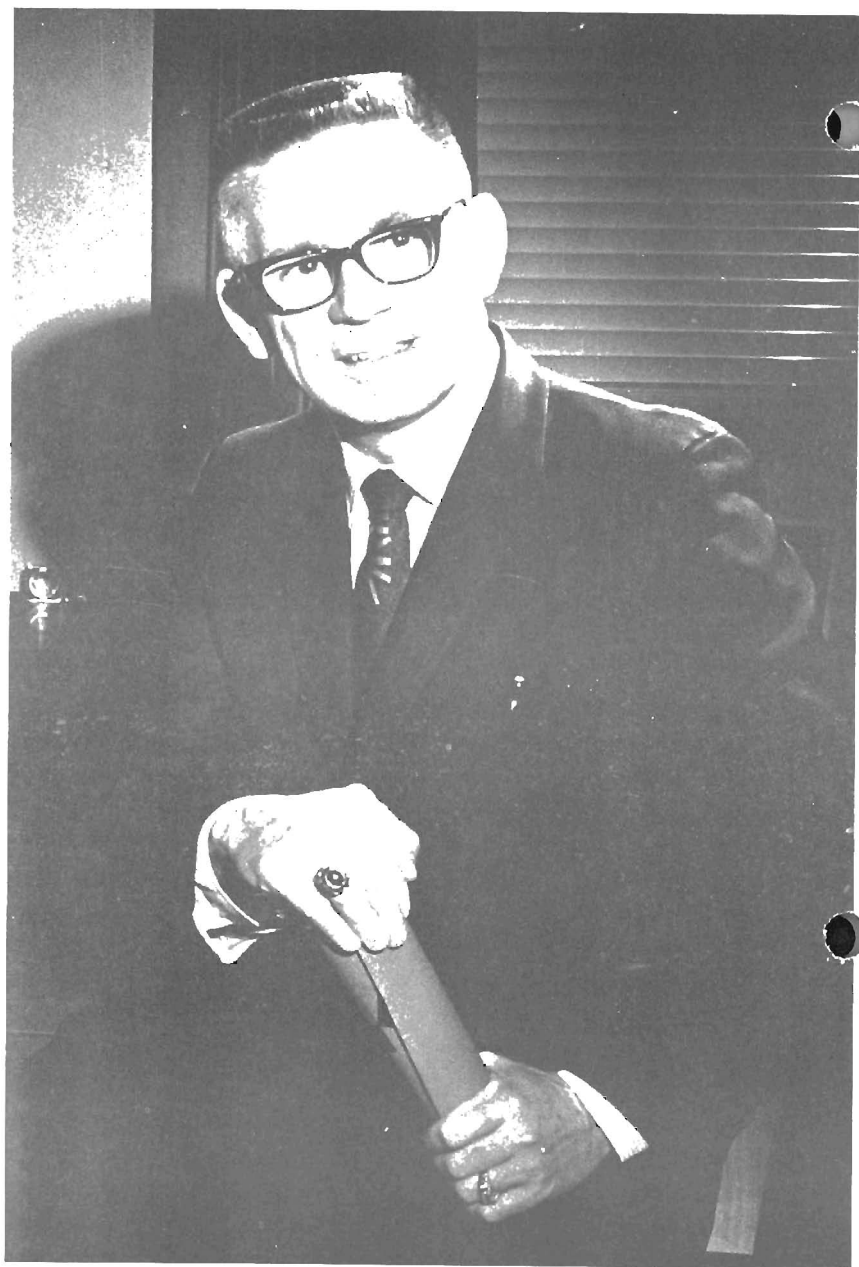
Bob Davis

Janice Williams

Peggy Worthington

TABLE OF CONTENTS

● Welcome from the President	5
Growth of Boise State College	7
Associated Student Body Officers	8
Where to Find Help	9
Academics	11-12
Student Regulations	13-15
Student Affairs	16
Student Organizations	17-20
Student Government	20-29
● Boise State College Athletics	30-31
Residence Halls Regulations	32
Boise State College Administrative Officers	33
Boise State Fall Semester Calendar	34
Boise State Spring Semester Calendar	35



DR. JOHN B. BARNES
President of Boise State College

A Welcome from the President . . .

Dear Student:

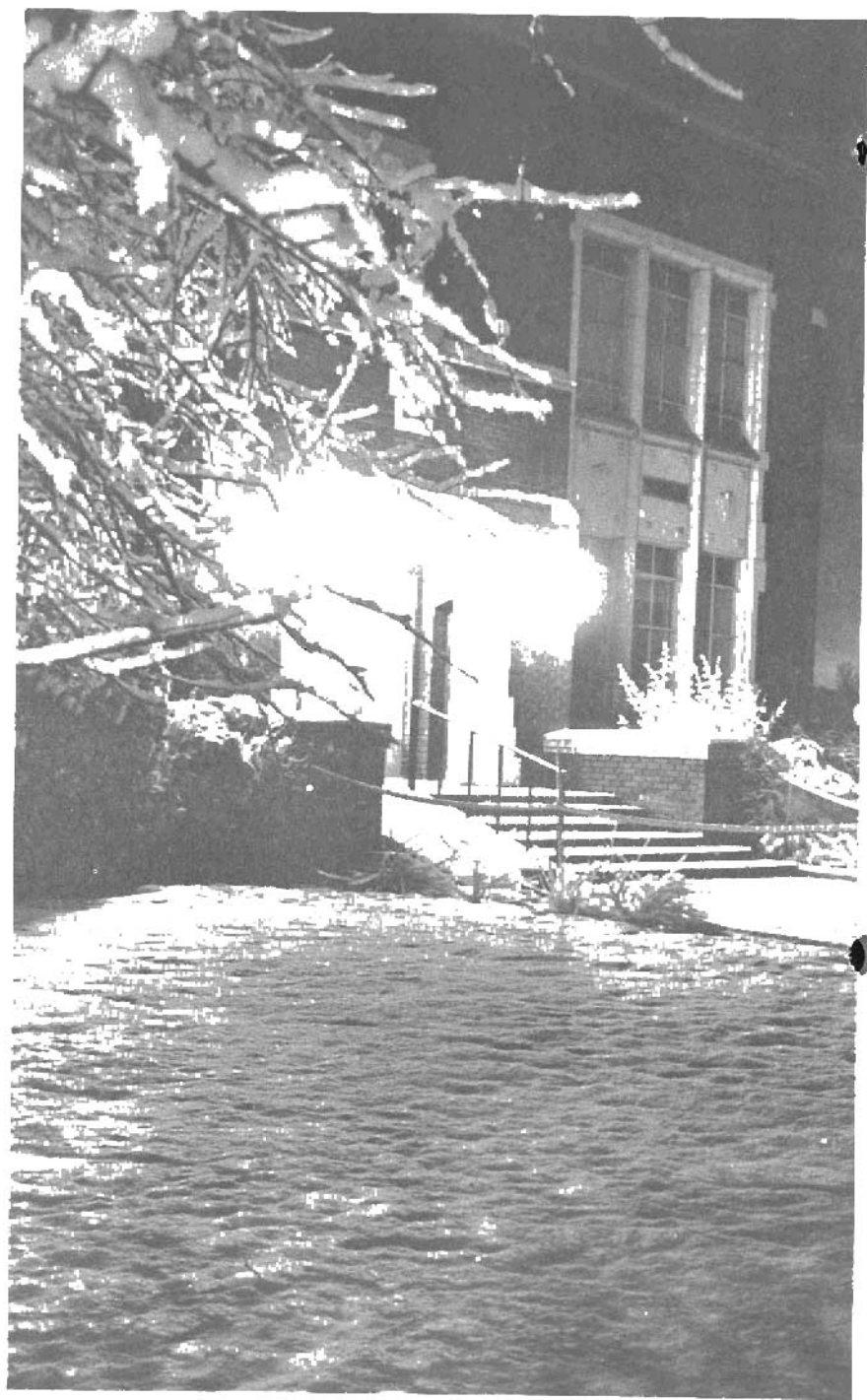
Emerson wrote: "There is properly no history: only biography." The history of our great nation certainly reinforces this view that what has been accomplished is due to the personal influence of men and women of wisdom, patience, and dedication.

The group, the organization, the political party, the government, the business is really as creative and productive as the individuals that comprise its membership. Before a person can possibly be an effective member of a group, he must be the master of himself. Self-identity, self-motivation, self-evaluation should precede the absorption of an individual into the groups of his choice. History, without individuals, is like the plot of a play which has no characters.

As a student of Boise State College, we want you to be acutely aware of your present and future influence as an individual. The world cries out for people who have the skills, knowledge, and motivation to contribute. While you are here, develop as fully as possible all of these talents and attitudes. When you leave this college, give in full measure to whatever career you choose and in whatever city you live. Don't be content to let history shape you. Make your biography help shape the unmolded history that lies ahead.

Cordially,

DR. JOHN B. BARNES
President



Growth of Boise State College

Boise State College is proud of its reputation as the fastest growing college in Idaho. Organized in the spring of 1932, the college was first operated as a private institution, under the Episcopal Church and then as a non-profit corporation controlled by a board of public spirited individuals. In 1939, the city of Boise donated the old municipal airport on the south bank of the Boise River for the new campus.

In 1965, the eleven-building complex became a four-year degree granting school. A new student union building, new men's dormitory, and new liberal arts building were completed by fall 1967. Other college additions include a marquee and memorial mall, which were completed the summer of 1968.

As of January 1, 1969, Boise College will officially become Boise State College under the State Board of Regents.

Boasting an estimated enrollment of some 5,000 students from other states as well as an increasing number from foreign countries.





ASSOCIATED STUDENT BODY OFFICERS, seated from left, are Jim Gray, vice president; Kathy Eason, secretary; standing from left, Pat Fleenor, treasurer; and James (Dyke) Nally, president. These officers and their appointed committee members are an essential part of student government at Boise State College.

WHERE TO FIND HELP

YOU WANT TO . . .

- Get help with your curriculum, change or drop a course
- Off-campus employment
- Withdraw from college

- Register an automobile
- Gain on-campus employment
- Receive poster approval

- Buy books, paper, supplies, etc.
- Get a snack, meal, haircut, go bowling or speak with ASB officers
- Inquire about a loan, scholarship or grant
- Receive on-campus employment checks, pay board and room, late registration fees, or any other bills
- Report a change of address

- Inquire about health and accident insurance
- Place a social event on the Activities Calendar
- Locate a student
- Place a notice in the "Statesman" or "Roundup"
- Obtain medical attention

- Obtain housing — unmarried

- Obtain housing — married

- Obtain testing counseling

- Obtain counseling

GO . . .

- See your advisor first

- To Room 128, Admin. Bldg.
- See Dean of Men or Women, Room 123, Admin. Bldg.
- Room 107, Admin. Bldg.
- To Room 128, Admin. Bldg.
- To ASB offices in the Student Union
- To Book Store in Student Union
- To the Student Union

- See the Director of Financial Aids, Room 128, Admin. Bldg.
- To the cashier's window, Room 115, Admin. Bldg.

- To Room 123, Admin. Bldg. (all changes must be reported)
- See Assistant Business Manager, Room 115, Admin. Bldg.
- See the Social Chairman in the Student Union, ASB offices
- To Room 100, Admin. Bldg.
- To News Bureau office, Room 103, Admin. Bldg.
- To Student Health Center
- Doctor available, 8:30-9:30 a.m.
- Nurse available, 9:00-12:00 a.m. 1:00-4:00 p.m.
- See Dean of Men or Women, Room 123, Admin. Bldg.
- See Dean of Student Personnel Services, Room 114, Admin. Bldg.
- See Director of Counseling and Testing, Room 211, Admin. Bldg.
- See Dean of Men or Women, Room 123 or Counselors, Room 108. Vocational students should report to Room 112, Technical Bldg.

ACADEMICS

The main reason one goes to college is to educate oneself, so that he will become the type of individual, who is an attribute to society. This following section is included in your student handbook to help you attain these objectives.

1. Grading System:

- A – Distinguished work (four quality points per credit hour)
- B – Superior work (three quality points per hour)
- C – Passing work (two quality points per credit hour)
- D – Passing work (one quality point per credit hour)
- F – No quality points per credit hour)
- Inc. – Incomplete may be given in cases where work has been satisfactory up to the last three weeks of the semester. Work not made up within the first half of the semester after the student returns to college automatically becomes a failure unless special extension of time is granted by the instructor and Executive Vice President.
- W – Official withdrawal during the first four weeks of the semester or while doing passing work. For procedure, see regulation below.

2. Changing Program or Withdrawals From a Class

A student may withdraw from a course or add a new course before or on September 13, 1968, and February 7, 1969, without any penalty. If a student withdraws from a course after the above dates and before November 25, 1968 or April 24, 1969 and is passing at the time, he is awarded a "W" on his official transcript; if he is failing, he must be awarded a mark of "F."0

During the last three weeks of a semester (including final examination week) a student may not withdraw from any course.

To withdraw from one class and enter another, a student secures a signed permit from his advisor and has it endorsed by each instructor involved. The permit is then presented to the Registrar for signature and then cleared with the Business Office. The date on which the Registrar signs the permit will be the official withdrawal date.

3. Withdrawal From College

A student may officially withdraw from College only by securing a withdrawal permit from the Dean of Men or Dean of Women and having it signed by same. He then must be cleared by the Dean of Student Personnel Services, Director of Buildings and Grounds office, the Registrar's office and the Business office.

During the last three weeks of a semester (including final examination week) a student may not withdraw from college.

4. Attendance and Absence From Class

Students are responsible for their attendance in the courses for which they are enrolled. No absences whether approved by the College for participation in college-sponsored activities or necessitated by sickness or other personal emergency are "excused" in the sense of relieving the student of responsibility for work assigned or carried on by a class during his absence.

The week prior to and the week of semester exams is a closed period, i.e., no events may be scheduled.

5. Academic Probation and Disqualification

A student whose work is of such a character that it appears he cannot continue in the College with profit to himself and credit to the institution, may be placed on probation and, subsequently, disqualified. In general, satisfactory performance means orderly progress toward graduation requirements with a cumulative grade point average of 2.0 or better.

He will be automatically placed on probation at the end of any semester in which he fails to achieve a passing grade in at least ten credit hours, exclusive of required physical education, if a full-time student, or, if he is a part-time student, fails to pass two-thirds of his courses.

6. Transcripts

Students transferring to another college should request a transcript from the Registrar's office. The first copy is free; thereafter, the cost is \$1.00 per single copy. Payments must be received before transcripts are mailed. Only unofficial copies (without the signature of the Registrar and Seal of the College) are given to students.

7. Graduation

Boise State College offers a Bachelor of Arts (B.A.) degree in the following majors:

Art	History, Secondary Education Option
Art, Secondary Education Option	Mathematics
Commercial Art	Mathematics, Secondary Education Option
Biology	Medical-Technology
Biology, Secondary Education Option	Music
Business Administration	Music, Secondary Education Option
Business Education	Physical Education, Secondary Education Option
Industrial Business	Pre-Medical Studies
Office Administration	Psychology
Chemistry	Social Science
Chemistry, Secondary Education Option	Social Science, Secondary Education Option
Criminology	Social Science, Social Work Option
Elementary Education	Spanish
English	Speech-Drama
English, Secondary Education Option	Speech-Drama, Secondary Education Option
History	

Boise State College confers the degree of Associate of Arts upon those students completing a minimum of 64 semester hours with a cumulative grade point average of 2.0 in the curriculum of art or music or who have majors in other fine arts, the social sciences, or humanities providing they meet the requirements in the General Curriculum.

The degree of Associate of Science is conferred upon those students completing a minimum of 64 semester hours with a cumulative grade point average of 2.0 in one of the suggested professional or pre-professional curricula listed in the College catalog.

A diploma is granted to any student completing 64 semester hours of work for which the College gives credit. These must include four hours of physical education activities and six hours of freshman composition or communications. Semi-professional courses meet the requirements for a diploma. A cumulative grade point average of 2.0 or better is required. Vocational Education students are not required to take the four hours of physical education.

Check the College Catalog for Specific Course Requirements

STUDENT REGULATIONS

As young adults, Boise State College students are required to follow institutional rules and regulations, which are essential to any group of people, who want to continue functioning as a whole.

The quality of student citizenship at Boise State College relies on the young adult's ability to abide by the rules of the City of Boise, State of Idaho and the United States. The College policies have been designed to regulate with the least amount of regulation to get the best cooperation and results.

1. The Student Conduct Board is composed of a faculty representative from each academic school. This representative is appointed by the respective dean of his school and they serve for one calendar year, beginning with the fall semester. If the case being reviewed by the board involves only women, the Dean of Women will serve as chairman; if it involves only men, the Dean of Men serves as chairman; if it involves both men and women, the Dean of Student Personnel Services serves as chairman, with the Dean of Men and Dean of Women serving as non-voting members. The Dean of Men serves as administrative director for the board.

2. The board will review all cases involving possible suspension or dismissal for any reason other than academic disqualification. In addition, cases of a less serious nature will be reviewed by the board at the request of the Dean of Student Personnel Services, Dean of Men, or Dean of Women.

3. A student may appeal the decision of this board to the President of the College, with the Board of Trustees being the final appeal.

4. The respective chairman of the board must have at least three members present for any action. The representative from the school of the student in question must be one of the three members.

Alcoholic Beverages

The possession, use, or serving of any alcoholic beverages is not permitted on campus or at any College sponsored function.

Soliciting

Any student, solicitor, agent, or sales person operating in his own interests and for any purpose not directly connected with college interests, is not permitted to solicit without the written approval of the Dean of Student Personnel Services.

Pets

Animals and/or pets are not allowed in any College building: residence halls, Student Union, classrooms, and College Courts, because of health standards.

Parking and Vehicle Registration

Every student, who is eligible to operate a vehicle in the College area must register such vehicle officially with the College at the time the student registers for classes. Students attending night classes only do not need to register vehicles but are required to observe safety laws and restricted areas. For complete details and regulations, refer to the Boise State College parking brochure.

Smoking

Smoking is permitted only in the Student Union, residence halls, and outside College buildings. Any revision or exclusion of rules will be announced by the Student Conduct Board.

Card Playing

Card playing is permitted in the Student Union, only in the designated area and during the posted hours, and in the residence hall recreation lounges by residents of the hall only. Card playing and any other type of gaming is not permitted on any other part of the campus. GAMBLING, in any form, is prohibited on campus.

Firearms

Because of their recognized danger, firearms will not be kept in student living quarters. Possession of explosives, loaded or unloaded firearms on campus is strictly prohibited. Possession of explosives or a **loaded** weapon on campus will result in immediate dismissal from the College. The City Code interprets air rifles, pellet, or BB guns as being weapons or firearms.

Possession and use of **fireworks** in any College building or on campus is prohibited.

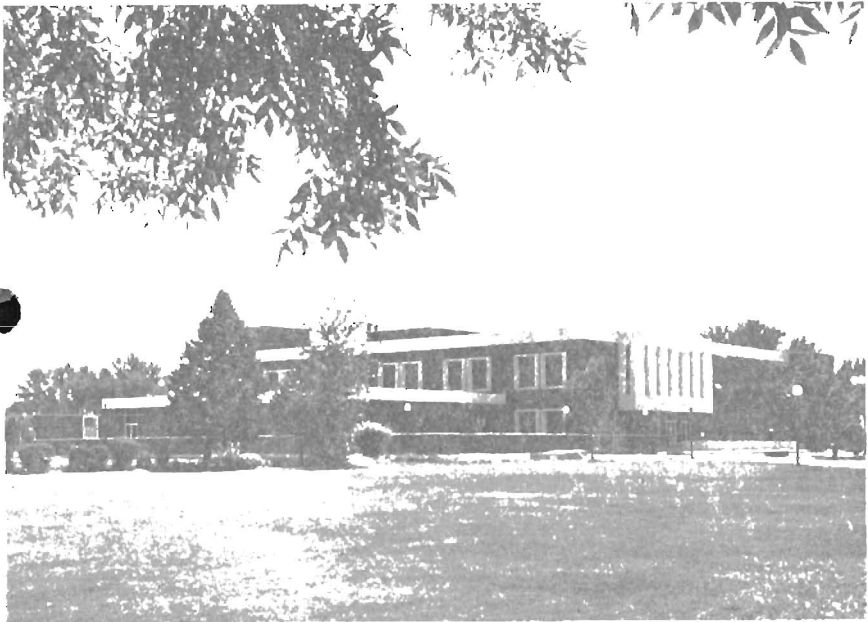
Occupants in College housing and off-campus housing, living within the city limits, are subject to Boise City ordinances and State laws.

Initiation and/or Hazing

The College does not approve of any form of hazing. Hazing is defined as any action taken or situation created intentionally to produce mental or physical discomfort or in any way degrade the dignity of the individual.

Honesty

That the individual student is honest is uniformly assumed as is the fact that he is capable of responsible actions as a mature adult. In cases of dishonesty in the classroom, most infractions will be handled by the faculty member concerned. Major infractions are referred to the Executive Vice President.



ESSENTIAL to the Boise State College campus is the new Student Union Building, completed in 1967

STUDENT AFFAIRS

Campus activities, both traditional and contemporary, play a large part in keeping the balance between studying and relaxing. A social chairman is appointed by the student body president to provide adequate entertainment and a social committee is organized to assist the chairman.

A final social calendar is available at registration and you are cordially invited to attend all of these functions.

Procedure for Scheduling a Social Event

In the past, a great deal of confusion has arisen concerning the proper procedure in scheduling a social event. In order to facilitate the scheduling of social events, the significant steps have been printed in full detail on a hand-out sheet and are available in the office of the Dean of Student Personnel Services, Room 114, Administration Building or at the ASB offices at the Student Union Building.

Club presidents and social chairmen should bear in mind that all meetings, social and/or activity functions involving under-graduates must be scheduled in the office of Dean of Student Personnel Services, Room 114, Administration Building.

Moreover, dates for all major social functions (organizational or all-campus) must be submitted in writing to Room 114, Administration Building during the first week in May prior to the academic year in which it is to be held. This is to facilitate assigning major dates and sending letters of confirmation to the groups involved before summer recess.



STUDENT ORGANIZATIONS

Service and class clubs, religion and special interests organizations, living groups and publications are operated on the Boise State campus for the students and by the students. Their contributions to the campus are immeasurable.

Service Clubs

1. **Interservice Club Council.** Composed of the presidents of the service clubs, this group coordinates all activities of the service clubs.
2. **Golden Z's.** A women's honorary service organization devoted to the promotion of school activities, school spirit and friendliness on the campus.
3. **Valkyries.** A women's service organization fostering a spirit of competition and friendliness on the campus and assisting in campus activities.
4. **Tau Kappa Epsilon.** Men's fraternity to promote school spirit and assist in campus activities. The TKE house is on Warm Springs Avenue.
5. **Intercollegiate Knights.** Men's service organization to promote school spirit and assist in campus activities.
6. **Life Lines.** An organization of college women who obtain pledges of blood to blood banks and try to acquaint the college students with the importance of the blood program and its benefits.
7. **Esquires.** An organization comprised of ex-servicemen who promote school spirit and assist in campus activities.
8. **Circle K.** An honorary men's service organization affiliated with Kiwanis to promote school spirit and assist in campus activities.
9. **Tau Alpha Pi.** An organization to encourage good character and to cultivate fellowship among vocational and terminal students.

Class Clubs

1. **Broadcasting.** Members operate KBSC and receive experience in radio work.
2. **Delta Epsilon Chi.** The purpose of the mid-management club is to place students in selling positions with the goal of becoming a supervisor or manager of a business.
3. **Debate.** Open to all students interested in debate.

4. **Engineers.** An organization dedicated to the furthering of interest in the engineering field.
5. **Forestry.** An organization for further interest in the forestry field.
6. **French, German, Spanish.** Open to students enrolled in those courses and/or who speak the languages. Every year the clubs sponsor plays as well as social activities.
7. **Homettes.** A club to promote friendly association among faculty and students interested in home economics.
8. **International Relations.** Open to interested students with the purpose of building better relationships among foreign and American students.
9. **Nurses.** An organization whose purpose is to develop a spirit of unity among the student nurses.
10. **Student National Education Association.** SNEA is composed of students who express a desire to enter the teaching profession. The club promotes enthusiasm and understanding for the profession.
11. **Phi Beta Lambda.** This is a national organization for students majoring in business, economics, or business education.
12. **Band.** Open to those members of the BSC band.
13. **Broncettes.** Open to members of the BSC Drill Team.
14. **Alpha Psi Omega.** An honorary drama society open to interested dramatic students.
15. **Les Bois.** An organization of students who publish the college annual.
16. **Roundup.** An independent organization of journalism students who publish the weekly newspaper.
17. **Kappa Psi.** The college's first professional business fraternity.

Religious Organizations

1. **Interfaith Council.** Composed of representatives from each religious group on campus. This organization coordinates religious activities and promotes such programs at the college.
2. **Newman Club.** Open to all Catholic students. The club meets twice monthly for discussions and socials.
3. **Wesleyan.** A religious group for Methodist students.
4. **Canterbury.** An organization of Episcopal students on campus having as its objectives worship, study, service, and brotherhood.

5. **Baptist Student Union.** A religious group of interested Baptist students.
6. **Lambda Delta Sigma.** An organization of BSC students who are affiliated with the LDS church.
7. **Sons of Heleman.** A religious club of LDS men.

Special Interests Organizations

1. **Rodeo.** An organization to promote interest in rodeo, and to keep the standards of rodeo performance high, according to accepted rules.
2. **Young Democrats.** Composed of all students interested in the principles of the National Democratic Party.
3. **Young Republicans.** Composed of all students interested in the principles of the National Republican Party.
4. **Young Americans for Freedom.** Open to all students devoted to the cause of political conservatism.
5. **Cheerleaders.** Members of this club are the six cheerleaders.
6. **Hui O Hawaii.** Open to BSC students from Hawaii.
7. **B Club.** An organization of BSC athletes who have lettered in one or more sports.
7. **Boise State College Sports Car Club.** A group of sports car enthusiasts that promote competition in sports car rallies, etc.
9. **Flying Broncos, Inc. (Provisional).** An organization open to all students interested in flying and those interested in learning.
10. **Ski Club.** This is a special interest club that meets during the skiing season to stimulate interest among the students in competitive and pleasure skiing.

Living Groups

The following associations are open to students living in the following residence halls: Driscoll Hall, Morrison Hall, and Chaffee Hall.

Publications

Yearbook

The college annual, *Les Bois*, is published by the Associated Student Body. The cost of the publication is paid by student fees, student picture funds, and advertising.

The editor is appointed by the Student Executive Board. Any student interested in working on the staff, should contact the Dean of Student Personnel Services, Room 114 in the Administration Building.

Newspaper

The college paper, the *Roundup*, is published weekly by a group of interested students. The cost of the publication is paid for through the paper's advertising.

The editor is appointed by a special committee . . . the staff room is located in Room 103, Administration Building.

Impulse

Impulse is a literary magazine published by interested students each semester. Students interested in working on the staff should contact the English department.

STUDENT GOVERNMENT

Your student body card makes you a member of the Associated Students of Boise State College (ASBSC) and entitles you to a vote in all student body elections.

The SEB has control of the ASBSC budget. The ID card, which is purchased by students each semester, provides the following benefits:

1. Free admission to all regularly scheduled athletic events at home.
2. Reduced rates at athletic and social events held at other colleges.
3. Reduced or free rates for many college functions, productions and publications.
4. The right to vote in elections.
5. Eligibility for membership in campus organizations.
6. Free admission to lectures and assemblies.
7. Various special benefits and privileges created during the year as a result of efforts of ASBSC.

The operation of ASBSC is controlled by the constitution and in order to further the understanding of student government at BSC the ASBSC Constitution, in its entirety, is set forth below.

ASSOCIATED STUDENTS OF BOISE STATE COLLEGE

CONSTITUTION

ARTICLE I

Section I: Name. The name of this association shall be the Associated Students of Boise State College. (Hereinafter referred to as ASBSC.)

Section II: Membership. Any student of Boise State College upon payment of the required student body fees to the ASBSC fund shall be a member of this association. This fee shall be paid upon registration for each semester.

Section III: Purpose. The purpose of this association shall be to represent the students of Boise State College and to administer and execute the affairs of the ASBSC through the powers vested in the Student Senate and the Student Forum.

Section IV: Authority. This association shall operate within the standards set forth by the ASBSC. The Dean of Student Personnel Services is the official representative of the College and shall act as advisor to this association. In the event of his absence, he may appoint someone to represent him.

Section V: Ideals and Principles. The freedoms stipulated in the First Amendment of the Constitution of the United States shall be applicable to this association.

ARTICLE II

Senate

Section I: Membership. The Associated Student Body President, Vice President, Secretary, and the Treasurer, the four class presidents, the two senators from each class, the Social Chairman, and the two representatives from the Forum shall constitute the voting membership of this Senate. The ASB President shall vote only in case of a tie. The Dean of Student Personnel Services and the Parliamentarian shall be ex-officio, non-voting members.

Section II: Duties.

Clause 1. To formulate student policy.

Clause 2. To carry out administrative matters of the ASBSC.

Clause 3. To implement the programs and projects of the ASBSC and supervise the various committees.

Clause 4. To meet weekly while school is in session during the fall and spring semesters.

Clause 5. To approve by a majority vote all Presidential appointments

Clause 6. To approve by a 2/3 vote to fill any vacancies in the Senate.

Clause 7. To approve by a 2/3 vote the budget recommended by the ASBSC Treasurer, with a majority vote of approval by the Forum.

Clause 8. To initiate action by 2/3 vote to remove a Senate member who is unwilling or unable to carry out his duties, and then submit this action with accompanying decision to the ASBSC Forum. A 2/3 vote of the Forum will be required for removal of Senate members.

Clause 9. To create necessary committees.

Clause 10. To determine one member of the Judicial Committee.

Clause 11. To act as representatives of the ASBSC.

Clause 12. To remove by a 2/3 vote any appointees of the President who is unwilling or unable to carry out his duties, and then submit this action with accompanying decision to the ASBSC Forum. A 2/3 vote of the Forum will be required for removal.

Section III: Eligibility.

Clause 1. To be eligible for any class office or student body office, a cumulative 2.0 GPA must be achieved to run for office and a 2.0 GPA must be maintained for the duration of office. To be eligible for a student body office, a candidate must have completed 60 credits prior to taking office. The minimum requirements for class officers shall be: 30 credits for sophomore officers, 60 credits for junior officers, and 90 credits for senior officers. Freshmen candidates shall be required to have a 2.5 cumulative GPA or the equivalent from high school.

Clause 2. The treasurer, in addition to meeting the other requirements, must be a business major with at least two semesters of accounting.

Section IV: Absence of Officers. Any officer of the association upon having one unexcused absence, as determined by the Senate, shall be impeached. Prior notification acceptable to the presiding officer of the Senate shall constitute an excused absence.

Section V: Vacancy of Office. Vacancy in an office shall exist when an officer is unable or unwilling to fulfill the duties of his office.

Section VI: The Student Body Officers. The Student Body Officers of this association shall be the President, Vice President, Secretary, and Treasurer.

Clause 1. As of January 1, 1969, the ASBSC Student Body officers shall receive full tuition and fees. The President will also receive a \$100.00 credit from the ASB Treasurer.

Clause 2. The ASBSC President shall receive a scholarship totaling \$250.00 per semester; the ASBSC Vice President, Secretary, and Treasurer shall each receive a scholarship totaling \$125.00 per semester. This shall be effective as of the fall semester of 1968 and will be null and void as of January 1, 1969.

Section VII: Duties of the President.

Clause 1. To preside over the Senate meetings where he shall vote only in case of a tie.

Clause 2. To appoint chairmen for the standing committees and the editor of the *Les Bois* with majority approval of the Senate.

Clause 3. To fill all appointive positions with majority approval of the Senate.

Clause 4. He shall have the power to call special meetings of the Senate.

Clause 5. He shall be the official representative of the Associated Students to the community, state, and administration.

Clause 6. He shall have the power to appoint student replacements for the Student-Faculty Relations Committee with Senate approval.

Clause 7. He shall have the power to appoint a Parliamentarian with Senate approval.

Clause 8. He shall be empowered to appoint a joint committee of the Senate and Forum to work out points of contention.

Section VIII: Duties of the Vice President.

Clause 1. He shall preside over the Senate in the absence of the President.

Clause 2. He shall be a voting member of the Senate.

Clause 3. He shall succeed the President in the event of a vacancy in the latter office.

Clause 4. He shall be chairman of the Forum and vote only in case of a tie.

Clause 5. He shall be empowered to call special meetings of the Forum.

Section IX: Duties of the Secretary.

Clause 1. Shall be a voting member of the Senate.

Clause 2. Shall be responsible for recording all minutes of the Senate and Forum and to publish same in the student newspaper.

Clause 3. Shall notify each club of its representative's non-attendance at Forum meetings.

Clause 4. To notify the Dean of Student Personnel Services of changes of organization's campus status, and to notify any organization of its suspension.

Clause 5. Shall be an ex-officio, non-voting member of the Forum.

Section V: Duties of the Treasurer.

Clause 1. Shall be a voting member of the Senate.

Clause 2. Shall supervise all financial transactions of the ASBSC and shall be responsible to the Senate for all matters pertaining to the budget and its expenditures.

Clause 3. Shall submit a proposed budget to the Senate and Forum for their approval.

Clause 4. To publish a financial report covering his term of office in the student paper immediately prior to termination of his duties.

Clause 5. Shall be an ex-officio, non-voting member of the Forum.

Section XI: Duties of the Class Presidents and Senators.

Clause 1. They shall be voting members of the Senate.

Clause 2. They shall represent their respective classes in the Senate.

Clause 3. They shall hold a minimum of two class meetings each semester to report to their constituents.

Section XII: Duties of the Forum Senate Representatives.

Clause 1. They shall be voting members of the Senate.

Clause 2. They shall represent the Forum in the Senate.

Section XIII: Duties of the Social Chairman.

Clause 1. He shall be a voting member of the Senate.

Clause 2. To coordinate all social activities on the Boise State College campus.

ARTICLE III

Forum

Section I: Membership.

Clause 1. The membership of this body shall be composed of one representative from each organization recognized by the Boise State College Forum, representatives from the schools of Boise State College, and the representatives from the dormitories of Boise State College. The number of representatives from each school will be based on two for the first 300 students and one for each additional 300 students, and the number of representatives from the dormitories will be one for any number up to the first 125 students and one for each additional 125 students.

Clause 2. The ASBSC President, Secretary, and Treasurer and the College President shall be ex-officio, non-voting members of the Forum.

Clause 3. The ASBSC Vice President shall be chairman of the Forum and vote only in case of a tie.

Section II: Duties.

Clause 1. The Forum shall formulate by-laws to determine the operation and organization of the body.

Clause 2. They shall determine their two representatives to the Senate.

Clause 3. They shall determine two members of the Judicial Committee.

Clause 4. They may formulate student policy and initiate same with approval of the Senate.

Clause 5. They shall determine the recognition of new organizations on the campus.

Clause 6. They shall try impeachments initiated by the Senate.

Clause 7. They shall have the power to review at their discretion, any legislation passed by the Senate.

Clause 8. They may veto by 3/4 vote of the total body, any legislation passed by the Senate.

Clause 9. They shall meet every two weeks while school is in session during the fall and spring semester.

Section III: Attendance.

Clause 1. Any organization having an excess of one unexcused absence per semester will lose Forum recognition for the duration of that semester.

Clause 2. Prior notification to the presiding officer of the Forum shall constitute an excused absence.

Clause 3. Reinstatement of any organization may be accomplished only by petitioning the Boise State College Forum.

Clause 4. A 2/3 vote of the total body will be required for reinstatement in the Forum of any organization.

ARTICLE IV

Judicial Committee

Section I: Membership. Membership shall consist of three members: two determined by the Forum and one by the Senate.

Section II: Duties.

Clause 1. The Judicial Committee shall have final authority on all questions of interpretation of this constitution and by-laws, and on the constitutionality of legislation.

Clause 2. To conduct ASBSC elections with authority to appoint assistants to help during elections.

Clause 3. To preside over impeachment proceedings.

Clause 4. To be responsible for all reapportionment as determined by Article III, Section I., and Clause 1.

ARTICLE V

Student-Faculty Relations Committee

Section I: Membership. Membership shall consist of four students and three faculty members. The students shall be appointed by the ASBSC President and approved by the Senate; the faculty members shall be selected by the President of Boise State College. One student shall be named chairman and vote only in case of a tie.

Section II: Duties.

Clause 1. To review all matters of mutual interest deemed to be beneficial to Boise State College in the maintenance of internal harmony.

Subclause a. Any student petition rejected by this committee may be appealed to the ASBSC Senate and any faculty petition, likewise rejected, may be appealed to the Faculty Welfare Committee.

Subclause b. The Senate or the Faculty Welfare Committee may direct this committee to reconsider any matter and render a recommendation.

Clause 2. This committee shall be appointed prior to the end of the first month of school, fall semester, and shall serve until graduation, spring semester, of that same school year.

Clause 3. If any member of this committee shall be involved in an appeal, he shall step down for the duration of the Appeal.

Clause 4. The ASBSC President shall be empowered to appoint student replacements for this committee with Senate approval; the Boise State College President shall be empowered to appoint faculty replacements.

Clause 5. A confidential record shall be kept of all proceedings by this committee. These records may be examined only by order of the ASBSC President or the Boise State College President.

Section III: Decisions. This committee shall make recommendations to the concerned parties.

ARTICLE VI

Rule of Order

All legislative bodies will operate under *Robert's Rules of Order* unless otherwise specified.

ARTICLE VII

Elections

Section I: Time. The President, Vice President, Secretary, Treasurer and Social Chairman shall be elected each spring semester on the first Friday in March.

Section II: Requirements. A plurality is necessary for election to the Senate. In case of a tie, a run-off election will be held within one week.

Section III: Class Officers. The class presidents and the senators shall be elected each fall semester, no later than Friday of the third week of class.

Section IV: Election Policy. Election policy and administration shall be under the jurisdiction of the Judicial Committee including all matters pertaining to the voting and tabulating of the results. All decisions of the Judicial Committee pertaining to elections shall be subject to the review of the Senate and Forum.

Section V: Term of Office. Term of office shall be from election to election.

Section VI: Ballot System. The Australian Ballot System shall be used in all elections of this association.

Section VII: Inauguration. Inauguration of the ASBSC officers shall be at the first Forum meeting following elections.

Section VIII: Oath of Office. The following oath shall be used in the swearing in of officers, administered by the ASBSC President: "I do solemnly affirm that as President, Vice President, Secretary, or Treasurer of the Associated Students of Boise State College, I will faithfully and to the best of my ability perform all the duties of my office and promote the best interests of the Students of Boise State College."

ARTICLE VIII

Funded Groups and Standing Committees

Section I: Funded Groups.

Clause 1. Funded Groups are groups which receive ASBSC funds.

Clause 2. They shall be financially responsible to the ASBSC Treasurer.

Section II: Standing Committees.

Clause 1. The standing committees shall include Social Committee, Lyceum, SPID, SPRB (Student Public Information Board, and Student Public Relations Board), and Student Union Board.

Clause 2. Chairman shall be appointed by the ASBSC President with the approval of the Senate and Forum.

Clause 3. They shall be financially responsible to the ASBSC Treasurer.

ARTICLE IX

Constitutional Revision

Section I: Proposition of Amendments.

Clause 1. Amendments may be brought before the Senate by a majority vote from the Forum.

Clause 2. Amendments may be proposed by majority vote of the Senate.

Clause 3. Amendments may be proposed by a petition with a minimum of 25 students' signatures to any meeting of the Boise State College Forum.

Section II: Adoption of Amendments. An amendment to this constitution must be approved by a 2/3 vote of the total membership of the Senate, Forum, and a majority vote of approval by students casting ballots.

Section III: Revision. This constitution may be amended only in the ways specified in this article of this constitution.

Section IV: Rewriting. Any time there is a vast rewriting of this constitution or when a new constitution is proposed, it must be approved by a general student body vote of which a majority of the votes must be cast for the new constitution before it is adopted.

ARTICLE X

Ratification

Section I: Ratification. The ratification of this document by a majority vote of the students' votes cast shall be sufficient for its establishment as the constitution of the ASBSC.

Section II: Impotency of Previous Constitutions. Upon ratification of this constitution, all previous constitutions of Boise Junior College or Boise College shall be null and void except that those officers elected under the previous constitution shall serve the remainder of their terms of office unless removed from same.

Section III: Supremacy. Upon ratification of this constitution, it shall be the supreme governing document of the ASB. Any legislation by any organization of the ASB contrary to its provisions shall be null and void.

BOISE STATE ATHLETICS

Fine athletics have been a tradition at Boise State College for decades. This year's exciting and memorable seasons in football and basketball will include a list of new teams and their schools and promise for new excitement as Boise State changes status in sports conferences.

BOISE STATE COLLEGE

"BRONCOS"

1968 FOOTBALL SCHEDULE

HOME GAMES

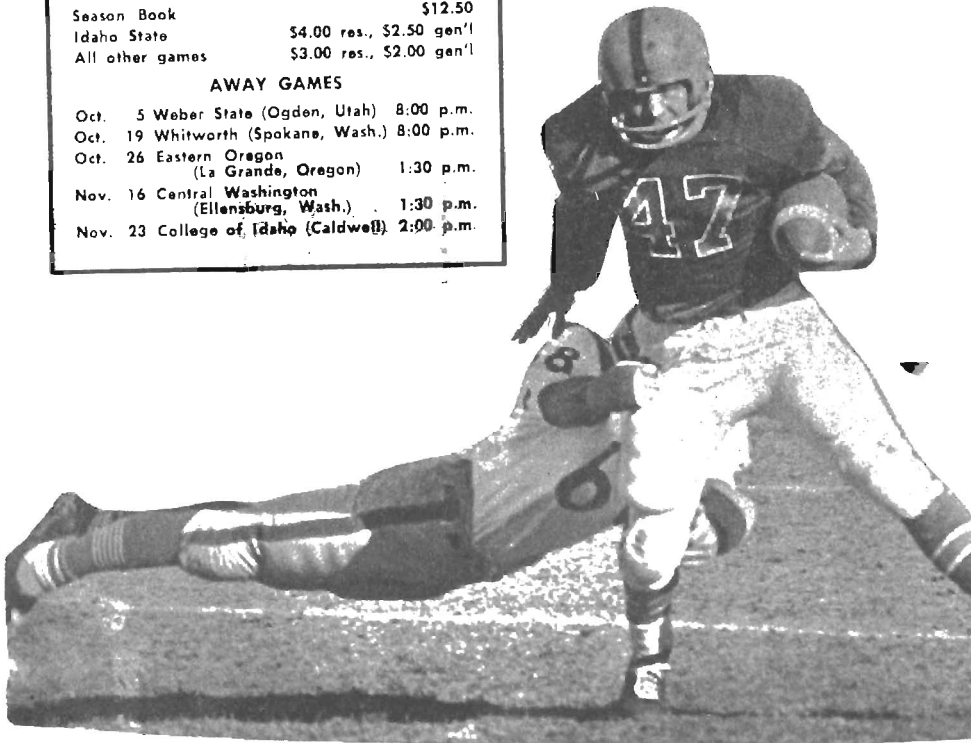
Sept. 21	Linfield (16th Kiwanis Night)	8:00 p.m.
Sept. 28	Westminster (18th Elks Night)	8:00 p.m.
Oct. 12	E. Washington	8:00 p.m.
Nov. 2	Idaho State (Homecoming)	1:30 p.m.
Nov. 9	Colorado Western	1:30 p.m.

TICKET PRICES, HOME GAMES

Season Book		\$12.50
Idaho State	\$4.00 res., \$2.50 gen'l	
All other games	\$3.00 res., \$2.00 gen'l	

AWAY GAMES

Oct. 5	Weber State (Ogden, Utah)	8:00 p.m.
Oct. 19	Whitworth (Spokane, Wash.)	8:00 p.m.
Oct. 26	Eastern Oregon (La Grande, Oregon)	1:30 p.m.
Nov. 16	Central Washington (Ellensburg, Wash.)	1:30 p.m.
Nov. 23	College of Idaho (Caldwell)	2:00 p.m.

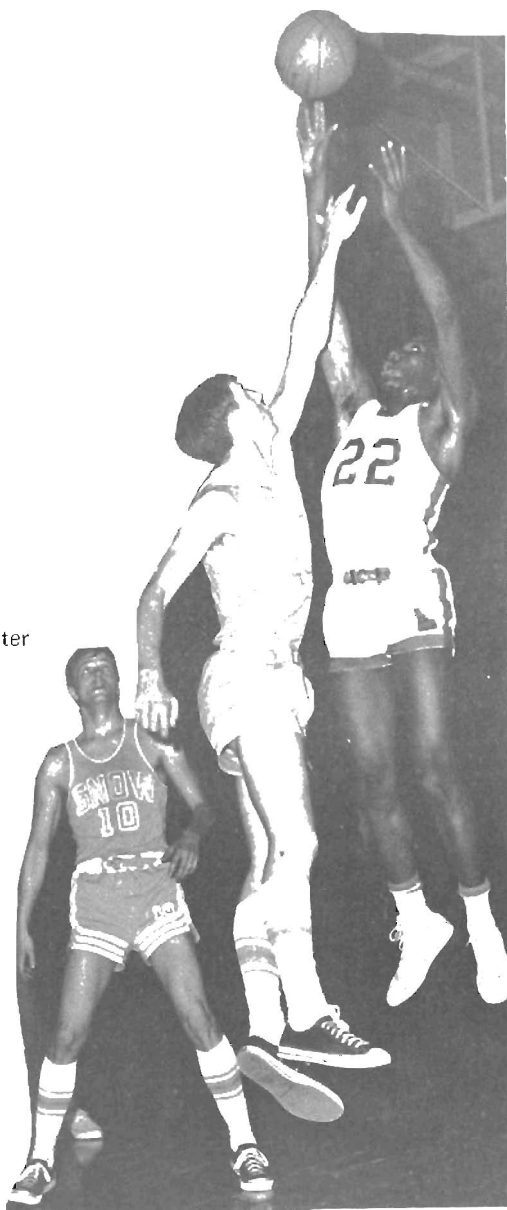


BOISE STATE BASKETBALL

FIGHT SONG

Hold that line for Boise College
Broncos, we're counting hard on you
Fight for tradition and your alma mater
Fight for the orange and the blue
FIGHT! FIGHT! FIGHT!

We'll applaud for you from the
grandstand, Broncos
We'll cheer you on to victory
While we cheer and stand up
Keep your sand up
For the glory of BSC!



Clothing Tip:

High School Sweaters or Jackets Are NEVER Acceptable!



Visiting Hours — Women's Residence Halls

Women students at Boise State College are expected to observe regulations in regards to hours and behavior that have been established by the Residence Hall Council and the College. Men students are expected to honor and assist the women in the observance of these regulations by seeing that the women are returned to their hall by the appointed hour. Men students will be held responsible if they encourage infractions.

Boise State College

ADMINISTRATIVE OFFICERS

John B. Barnes	President
B.A., M.A., Ed.D.	
Richard Bullington	Executive Vice President
B.S., M.A., Ed.D.	
W. L. Gottenberg	Vice President
B.A., M.A.	for Special Services
Rex Romack	Dean of Student
B.A., M.S., Ed.D	Personnel Services
Jerry Davis	Assistant to the Dean of
B.A.	Student Personnel Services
Dwane R. Kern	Vice President
B.A.	for Financial Affairs
Herbert O. Mengel	Director of Buildings
B.S.	and Grounds
Flora Wallace	Dean of Women
B.A., M.S., Ed.D.	
Edwin E. Wilkinson	Dean of Men
B.A., M.S.	
Philip A. Ranke	Director of Student Union
B.A., M.A.	
Gordon Phillips	Purchasing Agent
B.S.	
Samuel B. Righter	Director of Admissions
B.A., M.Ed.	and Records
Alice H. Hatton	Registrar
B.A.	
Dick Reed	Financial Aids and Part-time
	Student Employment
Acel H. Chatburn	Director, Educational Service
B.A., M.A., Ed.D	
Robert E. Rose	Dean, School of Business and
B.A., M.A., Ph.D.	Public Administration
Charles R. Rostron	Director, School of Vocational-
B.S., M.S., S.C.E	Technical Education
Joseph B. Spulnik	Dean, School of Arts and Sciences
B.S., M.S., Ph.D.	
Gerald R. Wallace	Dean, School of Education
B.A., M.A., Ed.D.	

BOISE STATE COLLEGE CALENDAR 1968 – 1969

FALL SEMESTER

Last Date to Complete All Admission Requirements* (to be able to register at regular registration times)	5:00 P.M.,	Mon.	Aug.
New Faculty Orientation	from 9:00 A.M., to 5:00 P.M.,	Thurs. Fri.	Aug. 15 Aug. 16
General Faculty Meeting	5:00 P.M.,	Sun.	Aug. 18
Faculty Dinner	7:00 P.M.,	Sun.	Aug. 18
Division Meetings (faculty)	8:00 P.M.,	Sun.	Aug. 18
Pre-Registration Advising by Appointment (Seniors and Juniors)	from 8:00 A.M., to 5:00 P.M.	Mon.	Aug. 19
Residence Halls Open	1:00 P.M.,	Mon.	Aug. 19
New Student Orientation and Group Advising (Gymnasium)	8:00 A.M., to 10:15 A.M.	Tues.	Aug. 20
Pre-Registration Advising by Appointment (Sophomores)	from 8:00 A.M., to 5:00 P.M.	Tues.	Aug. 20
Late ACT Test (Gymnasium) (for students who have not taken tests)	from 10:30 A.M., to 3:00 P.M.	Tues.	Aug. 20
Math Placement Test (Science Bldg.) (Math, engineering and Science Majors)	from 3:30 P.M., to 5:30 P.M.	Tues.	Aug. 20
Foreign Language Placement Test (LA 206) (for students who have foreign language background and wish to continue in the same foreign language)	from 8:00 A.M., to 10:00 A.M.	Wed.	Aug. 21
Pre-Registration Advising (Liberal Arts Bldg.) (New, Transfer and Former Boise College Students)	from 8:00 A.M., to 5:00 P.M.	Wed.	Aug. 21
Registration for Seniors, Juniors, Sophomores (Gymnasium) (by schedule)		Wed.	Aug. 21
Pre-Registration Advising (Liberal Arts Bldg.) (new, Transfer and Former Boise College Students)	from 8:00 A.M., to 5:00 P.M.	Thurs.	Aug. 22
Registration for Sophomores (continued) and Freshmen (by schedule)		Thurs.	Aug. 22
Pre-Registration Advising (Liberal Arts Bldg.) (New, Transfer and Former Boise College Students)	from 8:00 A.M., to 3:00 P.M.	Fri.	Aug. 23
Registration for Freshmen (continued)		Fri.	Aug. 23
Evening School Registration (Gymnasium)	from 9:00 A.M., to 3:00 P.M.	Sat.	Aug. 24
Classes Begin		Mon.	Aug.
Labor Day (holiday)		Mon.	Sept.
Last Date for Adding New Courses for Credit		Fri.	Sept. 13
Last Date for Withdrawing without Penalty for Failing Work		Fri.	Sept. 13
Last Date for Removing Incompletes for Previous Semester		Fri.	Oct. 18
End of Mid-Semester Examinations		Fri.	Oct. 18
Annual Homecoming		Sat.	Nov. 2
Vererans Day (holiday)		Mon.	Nov. 11
Thanksgiving Vacation	from 10:00 P.M., to 7:00 A.M.	Wed. Mon.	Nov. 27 Dec. 2
Last Date to Withdraw from Classes		Mon.	Nov. 25
Semester Examinations	from 8:00 A.M., to 5:00 P.M.	Thurs. Sat.	Dec. 19 Dec. 21
Residence Halls Close	6:00 P.M.,	Sat.	Dec. 21
Christmas Vacation	from 5:00 P.M., to 7:00 A.M.	Sat. Mon.	Dec. 21 Jan. 13

*Students who complete after this date will be charged a late registration fee and scheduled after registration times.

BOISE STATE COLLEGE CALENDAR 1968 — 1969

SPRING SEMESTER

Last Date to Complete All Admission Requirements*	5:00 P.M.,	Tues.	Dec. 17
(to be able to register at regular registration times)			
Residence Halls Open to New Students	1:00 P.M.,	Mon.	Jan. 13
New Student Orientation and Group Advising	from 8:00 A.M.,	Tues.	Jan. 14
(Liberal Arts Bldg. 106)	to 9:45 A.M.		
Late ACT Test	from 10:00 A.M.,	Tues.	Jan. 14
(for students who have not taken the ACT Tests)	to 2:30 P.M.		
Math Placement Test	from 3:30 P.M.,	Tues.	Jan. 14
(Math, Engineering and Science Majors)	to 5:30 P.M.		
Pre-Registration Advising by Appointment	from 9:00 A.M.,	Mon.	Jan. 13
(Seniors and Juniors)	to 5:00 P.M.		
Foreign Language Placement Test (LA 206)	from 8:00 A.M.,	Wed.	Jan. 15
(for students who have foreign language background	to 10:00 A.M..		
and wish to continue in the same foreign language)			
Pre-Registration Advising by Appointment	from 8:00 A.M.,	Tues.	Jan. 14
(Sophomores)	to 5:00 P.M.		
Pre-Registration Advising (Liberal Arts Bldg.)	from 8:00 A.M.,	Wed.	Jan. 15
(New, Transfer and Former Boise College Students)	to 5:00 P.M.		
Registration for Seniors, Juniors, Sophomores (Gymnasium)		Wed.	Jan. 15
(by schedule)			
Pre-Registration Advising (Liberal Arts Bldg.)	from 8:00 A.M.,	Thurs.	Jan. 16
(New, Transfer and Former Boise College Students)	to 5:00 P.M.		
Registration for Sophomores (continued) and Freshmen		Thurs.	Jan. 16
(by schedule)			
Pre-Registration Advising (Liberal Arts Bldg.)	from 8:00 A.M.,	Fri.	Jan. 17
(new, Transfer and Former Boise College Students)	to 3:00 P.M.		
Registration for Freshmen (continued)		Fri.	Jan. 17
(by schedule)			
Evening School Registration (Gymnasium)	from 9:00 A.M.,	Sat.	Jan. 18
	to 3:00 P.M.		
Classes Begin		Mon.	Jan. 20
Last Date for Adding New Courses for Credit		Fri.	Feb. 7
Last Date for Withdrawal without Penalty for Failing Work		Fri.	Feb. 7
Washington's Birthday		Sat.	Feb. 22
End of Mid-Semester Examinations		Fri.	Mar. 14
Last Date for Removal of Incompletes for Previous Semesters		Fri.	Mar. 14
Spring Vacation			Mar. 20
			Mar. 25
Last Date to Withdraw from Classes		Thurs.	Apr. 24
Semester Examinations	from 8:00 A.M.,	Tues.	May 13
	to 5:00 P.M.	Thurs.	May 15
Residence Halls Close	6:00 P.P.,	Sun.	May 18
Commencement		Sun.	May 18

*Students who complete after this date will be charged a late registration fee and scheduled after regular registration times.

SUMMER SESSION 1969

First Session	June 9 — July 11
Second Session	July 14 — August 15

NOTES

