

BOISE

JUNIOR

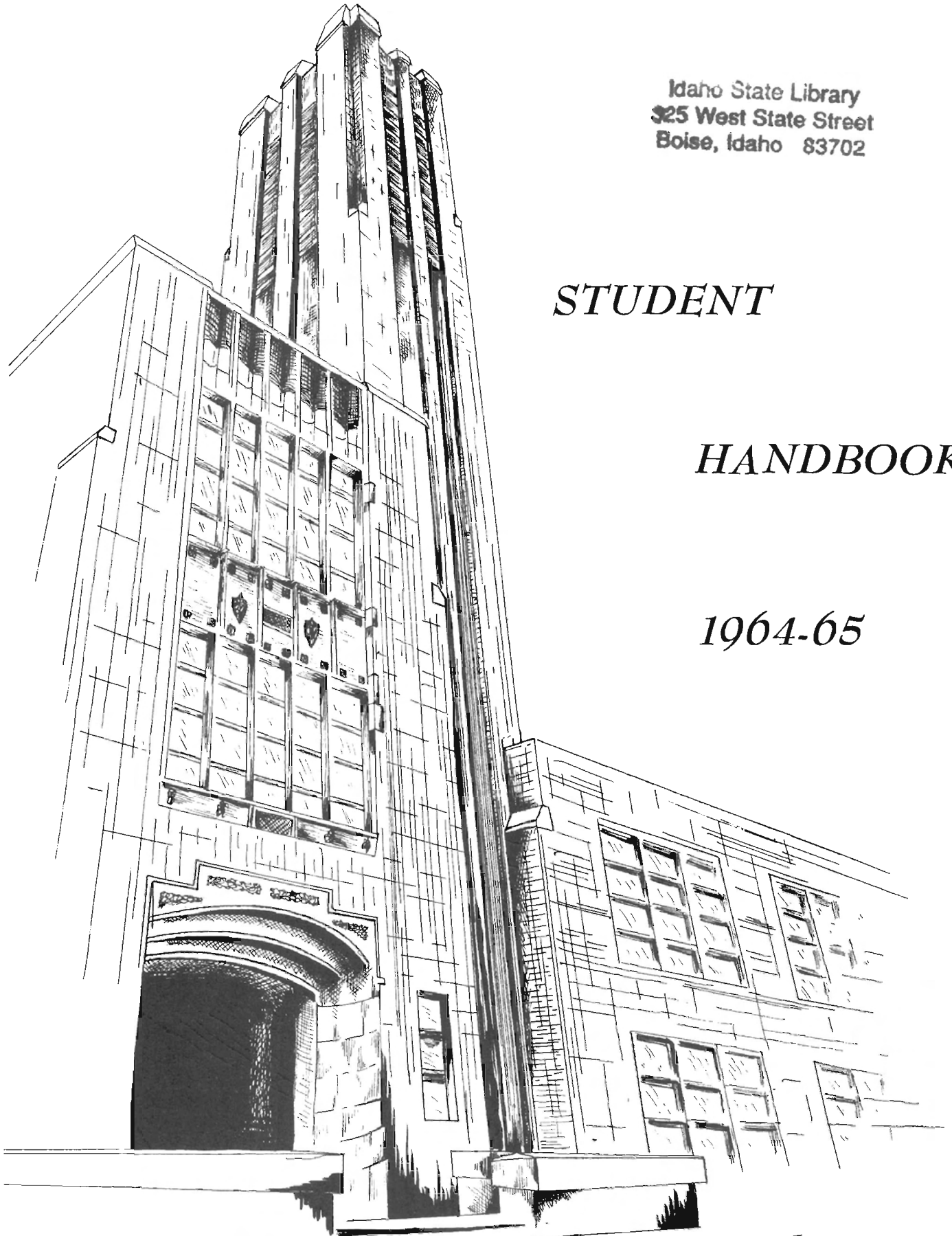
COLLEGE

Idaho State Library
325 West State Street
Boise, Idaho 83702

STUDENT

HANDBOOK

1964-65



Idaho State Library
325 West State Street
Boise, Idaho 83702

INTRODUCTION

For sometime you have looked toward the day that you would be in college. As a result, you have developed some ideas of what a college is, what it offers, and what you want to receive from the experience. From a multitude of sources and people, you have built up certain expectations that may or may not be met by this particular institution that you have chosen to attend.

Now that you are in college you will find that some of your preconceived ideas are sound, and others are overstated, or even all wrong. If you visualize college as being much like high school or as merely a long succession of social successes and fun, you are doomed to disappointment.

You are basically the same person you were two weeks or two months ago, but now in a new environment, you are involved in a complexity of different activities, people, and experiences. Before you can take your place on campus there must necessarily be an adjustment, a transitional period during which your expectations of college will be modified and during which you will develop new goals and objectives for yourself.

During this adjustment and orientation period you will learn about Boise Junior College and its purpose, about yourself and your goals, and how the two will interact with each other. It is hoped that this STUDENT HANDBOOK will present guide posts to help you attempt a realistic look at both college and your self. As a new student you must devise some system by which your new discoveries can meet and flow together. By using this handbook you will certainly save yourself many hours of confusion and will greatly enhance the opportunity of becoming a well organized college student.

Boise Junior College is an EDUCATIONAL institution, offering programs to help you develop your potential as a person and as a citizen. In the final analysis, though, YOU must educate YOURSELF, for the most thorough curriculum cannot be taught to one who does not have the motivation to learn. Here is opportunity; it is your own responsibility to make the most of it.

Each year students returning to Boise Junior College see new evidence of growth. Last year we saw the beginning and construction of the new Library Building. Today this completed library-classroom unit stands out as a monument to cultural and educational development for B.J.C. This long-needed educational center makes learning a pleasant experience, and the modern furnishings are conducive to a mood of concentration. The facilities are enhanced by the latest in lighting, heating and ventilation.

The patrons of this College have provided us with all of the essentials of a fine institution--excellent faculty, fine buildings, and superior classroom equipment. Now it is up to each student attending Boise Junior College to use these facilities to get the excellent education that is yours for the taking. This means work for each of you. You alone are now responsible for the ultimate completion of your education at B.J.C. I hope you will assume this task with diligence and enthusiasm.

Eugene B. Chaffee
President

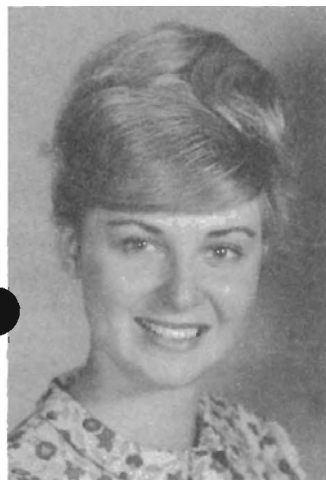


CRAIG HEILMAN
PRESIDENT

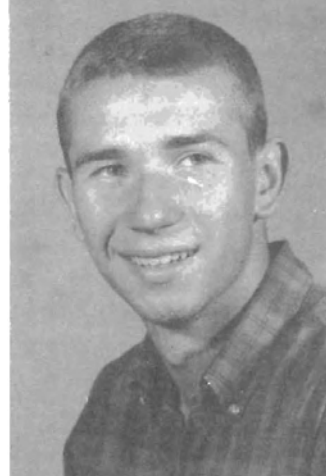
HELEN SCOTT
SECRETARY



LINDA ADAM
TREASURER



JANICE LABRUM



GARY SLEE

NORENE WRIGHT



WHERE DO YOU GO?

- TO CHANGE A COURSE ----- See your advisor first
- TO DROP A COURSE ----- See your advisor first
- TO WITHDRAW FROM COLLEGE ----- See Dean of Men & Women - rooms 211,
and 212 in Administration Building
- TO INQUIRE ABOUT A LOAN ----- Office of Vice President - room 103
in Administration Building
- TO INQUIRE ABOUT A SCHOLARSHIP ----- See Chairman of Scholarships Committee -
Dr. Fritchman, room 108 C in Sc. Bldg.
- TO PLACE A SOCIAL EVENT ON THE SCHOOL
ACTIVITIES CALENDAR ----- See Dean of Women - room 212 in Adm.
Bldg.
- TO GET A POSTER APPROVED ----- Office of Vice President - Maximum
size 14" x 22"
- TO GET NOTICE IN STATESMAN NEWSPAPER ----- See Assistant to Vice President -
room 103 A in Administration Bldg.
- TO GET NOTICE IN BJC SCHOOL PAPER ----- Publications' Office, T-1 Building
- TO OBTAIN ROOM FOR MEETING OR SOCIAL HOUR----- Office of Vice President
- TO GET HELP WITH CURRICULUM ----- See your advisor
- TO GAIN EMPLOYMENT ----- ON-CAMPUS WORK ---- Office of Vice.
President
OFF-CAMPUS WORK --- Offices of Deans
of Men and Women
- TO RECEIVE ON-CAMPUS EMPLOYMENT CHECKS -- Cashier's Office, -- room 115, Adm.Bldg.
- TO PAY BOARD & ROOM, LATE REGISTRATION
FEES, AND ANY BILLS THAT MAY OCCUR ----- Cashier's Office
- TO SEE ABOUT A LOST OR FOUND ARTICLE ----- Switchboard, room 115 in Administration
Building
- TO LOCATE A STUDENT ----- Card file at Switchboard
- TO OBTAIN MEDICAL ATTENTION ----- Health Center -- 209 Sherwood
8:30-9:30 A.M. -- Doctor available
9:00-12:00 NOON - Nurse available for
treatment of minor
ailments or injuries
- TO INQUIRE ABOUT STUDENT HEALTH AND
ACCIDENT INSURANCE ----- See Business Manager, room 117 in
Administration Building
- TO OBTAIN BOOKS ----- NEW BOOKS - book store in basement
Adm. Bldg.
USED BOOKS - Valkyrie book store in
basement of Adm. Bldg.
- TO OBTAIN SCHOOL SUPPLIES ----- Book store in basement Adm. Bldg.
- TO REPORT CHANGE OF ADDRESS ----- OFFICES OF DEANS -- Men and Women
(All changes of address must be
reported)
- TO OBTAIN COUNSELING ----- See your advisor, Deans of Men and
Women, and counseling psychologist
in room 120 in Administration Bldg.
- TO OBTAIN TESTING COUNSELING ----- See Dr. Phillips - room 121 in Adm.
Bldg.
- TO OBTAIN HOUSING ----- ON-CAMPUS & OFF-CAMPUS for unmarried
students - See Dean of Men
For married students - See College
Courts Manager, Apartment 605,
College Courts

BRIEF HISTORY

Boise Junior College was organized in the spring of 1932 in response to a demand for higher education in Boise. During the first years, the school operated as a private institution, first under the Episcopal Church and then as a non-profit corporation controlled by a board of public spirited individuals.

In September of 1939 BJC began its first academic year as a public institution. In February of 1939 an enabling act permitting the formation of junior college districts was passed by the legislature and signed by the governor.

In the fall of 1939 a district bond election for funds to build a college plant was approved by a 10 to 1 majority. The City of Boise donated the old municipal airport on the south bank of the Boise River for the new campus. By September of 1940 the Administration Building had been completed. During that school year a heating plant and gymnasium were built, followed by the erection of the Student Union Building, financed by the Student Body and the Board of Trustees of the Junior College, the Assembly-Music Building, and Vocational Shops.

During the intervening years the science building, dormitories, other vocational shops, and physical education building were completed on the 110 acre campus. Also constructed were a 10,800-seat stadium and a campus elementary school. The latter was built by the Independent School District on ground provided by Boise Junior College and is used for the teacher education program. Most recent is the addition of the Library-Classroom Building and the Technical-Education Building. In November of 1962 the voters of the Boise Junior College District approved an \$800,000 bond issue by a 4 to 1 margin thus enabling the addition of these most necessary and most attractive facilities to the campus.

The enrollment at the college in 1963-64 was 2026 day students and 2559 attended classes during the evening program.

STUDENT GOVERNMENT

Your student body card makes you a member of the Associated Students of Boise Junior College (ASBJC) and entitles you to a vote in all student body elections. The operation of the body is controlled by the constitution of ASBJC.

The governing body of ASBJC is the Executive Board. The president, vice president, secretary, treasurer, and sophomore class representatives are elected each spring. Freshman class president, vice president, secretary-treasurer, and the freshmen representatives are elected each fall. The Vice President of BJC, or his representative, is the advisor for the Executive Board.

The Executive Board has several committees that carry out major assignments during the academic year. These are: Homecoming activities; Social Committee, charged with the operation of all major social events; the Union Nite Committee, charged with union night dances and mixers after athletic contests; and the Student Publicity Interest Board, (SPIB) responsible for student ASBJC publicity and promoting interest and spirit on campus.

One of the major functions of the Executive Board is the operation of the ASBJC budget. The activity ticket, which is purchased by students each semester for \$9.00, is allocated on the following basis:

Athletics -----	30.9%
Publications -----	28.8%
Publicity -----	10.0%
Social -----	9.0%
Entertainment -----	5.4%
Music -----	4.0%
Debate -----	.5%
Pep Organizations -----	3.3%
Incidentals -----	2.1%
Contingencies -----	6.0%

Some of the benefits of being a member of ASBJC are:

1. Free admission to all regular scheduled athletic events at home.
2. Reduced rates at athletic and social events held at other colleges.
3. Reduced rates on many school functions, productions and publications.
4. The right to vote in class and student body elections, AWS and club elections.
5. Eligibility for membership in campus organizations.
6. Free admission for lectures and assemblies.
7. Various special benefits and privileges created during the year as a result of efforts of ASBJC.

FRESHMAN CLASS OFFICERS

One of the first duties of the freshman class each fall is to elect class officers.

Any freshman member of the associated students of Boise Junior College (ASBJC) who is registered as a full-time student (ten or more semester hours) and has the recommendation of his advisor is eligible to run for election as one of three representatives of the freshman class, class president, vice-president, or secretary-treasurer.

Elections for freshman class officers are held not less than three (3) weeks nor more than five (5) weeks after the beginning of the fall semester.

HOW TO RUN FOR OFFICE

A student wishing to run for office must file a petition with at least 25 signatures of full-time students with the election board. The petition must be filed one week before the election in the office of the Vice President. This applies to all ASB offices: individual organizations have their own regulations.

ELIGIBILITY FOR EXTRACURRICULAR ACTIVITIES

To be eligible to represent the college or student organizations in extracurricular activities a student must comply with the following:

1. For intercollegiate athletics: Eligibility will be based on the rules and regulations of the Intermountain Collegiate Athletic Conference. Such eligibility will be determined at each nine week grading period and will remain in effect until the next nine week grading period.

2. For other extra-curricular activities.

a. General eligibility for participation: Eligibility will be granted if a student complies with each of the following:

1. Is enrolled as a full-time student.
2. Earned at least 10 hours of credit in his most recently

completed semester or if an entering freshman, has the approval of his academic advisor.
3. Not be on academic or social probation.

b. Eligibility to hold an office or chairmanship: Eligibility will be granted if a candidate complies with each of the following:

1. Is enrolled as a full-time student.
2. Has a GPA of 2.00 or better.
3. Has a GPA of 2.00 or better for the semester immediately preceding.
4. If an entering freshman, has the recommendation of his academic advisor.

c. The activities governed by this section include:

1. Elective or appointive Student Body Officers, including heads of committees.
2. Elected officers of all officially recognized clubs (including residence hall organizations) exclusive of religious organizations.
3. Committee chairman appointed by the Social Committee of the SEB.
4. Participants in school-sponsored, class-centered extracurricular activities unless such participation is required to earn credits in catalog courses. Such activities include plays (both all-school and language), publications, choir, band and orchestra, debate, and radio and television appearance. Not included in this regulation are periodic school promotion programs on radio and television, talent shows, and other special Student Body assemblies.
5. Any other official representation of the school either by election or appointment.

d. Eligibility will be determined at the end of each semester grading period and will continue for the semester following.

3. It is the responsibility of the faculty activity advisor, director or coach to see that the eligibility of all candidates is certified by the

Registrar and filed with the Dean of Men before such candidates are eligible to participate in extra-curricular activities.

GENERAL INFORMATION-ACADEMIC

1. Grading System

- A Distinguished work---Four quality points per hour
- B Superior work----Three quality points per hour
- C Average work--Two quality points per hour
- D Passing work--One quality point per hour
- F No quality points per hour
- Inc Incomplete may be given in cases where work has been satisfactory up to the last three weeks in the semester. Work not made up within the first half of the semester after the student returns to college automatically becomes a failure unless special extension of time is granted by the instructor and Dean of Faculty.
- W Official withdrawal during the first four weeks of the semester or while doing passing work. For procedure, see regulation below.

2. Changing Program or Withdrawals from a Class

A student may withdraw from a course or add a new course before or on October 2 without any penalty. If a student withdraws from a course after the above date and is passing at the time, he is awarded a "W" on his official transcript; if he is failing, he must be awarded a mark of "F".

In order to accomplish the above a student secures a signed permit from his advisor, which has been endorsed by each instructor involved. The permit is then presented to the Registrar for signature and then cleared with the Business Office. The date on which the Registrar signs the permit will be the official withdrawal date.

3. Withdrawal from College

A student may officially withdraw from College only by securing a with-

drawal permit from the Dean of Men or Dean of Women and having it signed by same. He then must be cleared by the President's Office, the Registrar's Office and the Business Office.

4. Attendance and Absence from Class

Students are responsible for their attendance in the courses for which they are enrolled. No absences whether approved by the college for participation in college-sponsored activities or necessitated by sickness or other personal emergency, are "excused" in the sense of relieving the student of responsibility for work assigned or carried on by a class during his absence.

5. Closed Period

The week prior and the week of semester exams is a closed period; i.e. no events may be scheduled.

6. Academic Probation & Dismissal

A student, whose work is of such character that it appears he cannot continue in the college with profit to himself and credit to the institution, may be placed on probation and, subsequently, disqualified. In general, satisfactory performance means orderly progress toward graduation requirements with a cumulative grade point average of 2.0 or better.

He will be automatically placed on probation at the end of any semester in which he fails to achieve a passing grade in at least ten credit hours, exclusive of required physical education, if a full-time student, or, if he is a part-time student, fails to pass two-thirds of his courses.

7. Transcripts

Students transferring to another college should request a transcript from the Registrar's Office. The first copy is free; thereafter, the cost is \$1.00 for the first and 0.50 for each additional copy. Payment must be received before transcripts are mailed. Only unofficial copies (without the signature of Registrar and Seal of the College) are given to students.

8. Graduation

Boise Junior College confers the title of Associate of Arts upon those students completing a minimum of 64 semester hours with a cumulative grade point average of 2.0 in the curricula of art or music or who have majors in other fine arts, the social sciences, or humanities providing that they meet the requirements in the General Curriculum.

The title of Associate of Science is conferred upon those students completing a minimum of 64 semester hours with a cumulative grade point average of 2.0 in one of the suggested professional or pre-professional curricula listed in the college catalog.

A diploma is granted to any student completing 64 semester hours of work for which the Junior College gives credit. These must include four hours of physical education activities and six hours of freshman composition or communications. Semi-professional courses meet the requirements for a diploma. Accumulative grade point average of 2.0 or better is required.

* CHECK THE COLLEGE CATALOG FOR SPECIFIC COURSE REQUIREMENTS

GENERAL INFORMATION

1. Scheduling of Social Event

- a. Obtain open date from Dean of Women in room 212, Adm. Bldg.
- b. Notify Office of Vice President as soon as date is set.
- c. At least two weeks prior to event obtain social permit from Dean of Women.

1. Permit needs:

Name of organization
Name of event
Date and Time
Signatures of Advisor and Chairman
Signatures of three faculty members for chaperons

- d. Return properly filled permit to Dean of Women for signature.

2. Use of Building

A permit for the use of a particular building or any room within a building

must be secured from the Office of the Vice President, it must be properly filled out and on file in his office before college facilities can be used. If the permit calls for the use of the Student Union Building, it is taken to the Director of the Student Union and then returned to the Vice President. If the function is of a social nature, the building permit form must be accompanied by the completed social permit before permit to the facilities will be granted.

3. Publicity & Bulletin Board Procedure

All posters, banners, or advertising of any type must be approved in office 103, Administration Building, and cannot be larger than 14" x 22".

Only those events of organizations recognized by the college, and those approved for the social calendar, may be publicized, after the approvals of the Dean of Women and the Vice President.

All publicity for newspaper, radio, and TV must be approved by the Assistant to the Vice President, room 103, Adm. Bldg.

Clubs requesting BJC Print Shop to make up programs, invitations, etc., must get permit from Office of Vice President.

4. Conduct Probation

A student may be placed on conduct probation as the result of disciplinary action by the College Administration and should read the section on student conduct in this handbook.

5. Regulations

At BJC you will have the same problems in college life as would confront you in any community and there will be special ones because you are a student.

a. Student Conduct

In order to be admitted to Boise Junior College a student must present satisfactory evidence of good moral character. The development of character is regarded as a primary aim in education and is emphasized at all institution of higher learning.

1. Students are expected to show proper respect for good order, morality, and integrity.
2. Conduct must at all times be in keeping with the standards that identify a lady or a gentleman.
3. Students are held responsible for any breach of the recognized rules of conduct.

a. It is the attitude of the College that regardless of where they occur, the actions of any currently enrolled student are a matter of concern to Boise Junior College.

b. Disciplinary action for misconduct shall be in accordance with Boise Junior College policies and regulations.

c. While on conduct probation or under suspension a student is not eligible to represent the College or any student organization in any extra-curricular activity.

b. Intoxication Beverages

In formulating a policy with respect to alcoholic beverages, Boise Junior College recognizes its obligation, as a district-public supported institution, to provide a wholesome atmosphere for its students. This policy also takes into consideration the fact that a large percentage of its students are minors.

The College does not sanction the use or serving of any alcoholic beverages by students. Users are subject to strict accountability for any breach of law or propriety including such disciplinary action that may be imposed or warranted as a result of any violations.

c. Boise Junior College Regulations

The College policy in regard to alcoholic beverages is based on moral and legal obligations as defined by Idaho State law and

the Boise City Code.

1. Boise Junior College does not permit the use, possession, or serving of alcoholic beverages on the campus or in any college building.

2. Alcoholic beverages shall not be used or served at any function sponsored by any officially recognized student organization or living group. This policy applies to all social functions or events regardless of whether on-campus or off-campus.

3. Any student or group of students who are under the influence of intoxicants and/or who fail to conduct themselves in a responsible manner at all times by violating recognized standards of conduct shall be subject to disciplinary action.

d. Smoking

Permitted only in the Student Union, Residence Halls, and outside College Buildings.

e. Card Playing

Is permitted in the Student Union Building, only in the designated area and during the posted hours, and in the Residence Hall recreation lounges by residents of the hall only. Card Playing and any other type of gaming is not permitted on any other part of the campus. GAMBLING by students, in any form or by any means, is prohibited on campus.

f. Fire Arms

Because of their recognized danger, loaded or unloaded firearms will not be kept in student living quarters. Possession of loaded or unloaded firearms on campus is strictly prohibited. Possession of a loaded weapon on campus at any time will result in immediate dismissal from the College. Possession and use of fireworks in any College Building or on campus is prohibited. Violators will be subject to disciplinary action.

Occupants of College housing and off-campus housing, living within the limits of the City of Boise, are subject to city ordinances as well as State laws governing the use of firearms and fireworks.

g. Initiation and/or Hazing

The College does not approve of any form of hazing. Hazing is defined as any action taken or situation created intentionally to produce mental or physical discomfort or in any way degrade the dignity of the individual.

h. Clothing Tips

Women

For campus and classes:

Sport dresses, sweaters and skirts, low heels.

Slacks, shorts, or pedal pushers are not acceptable campus wear.

For dances:

Semi- or formal- dressy dress, short or long.

Men

For campus and classes:

Casual clothes, slacks, cords, shirts and sweaters.

Bermudas, shorts, levis, sweat-shirts, T-shirts, & Thongs are not acceptable campus wear.

For dances:

Informal-----sport jacket and slacks. Semi- or formal--suit or tuxedo, tie necessary.

General

High school sweaters are not acceptable attire for college students.

i. Visiting Rules-Girls Residence Halls

1. Visiting hours are from 4:00 PM until 10:30 PM, Monday through

Thursday; 2:30 PM until 11:00 PM, Friday and Saturday; 1:00 PM until 10:30 PM, Sunday and also during the noon hour each day.

2. Men students are allowed to enter through the front entrance and to use the main lounge ONLY when calling on a specific resident.

a. Any male student attempting to gain entrance to any of the Girls' Residence Halls, or talking to a resident through any window or door (other than front entrance) will be immediately dismissed from College.

j. Honesty

That the individual student is honest is uniformly assumed as is the fact that he is capable of responsible actions as a mature adult. In cases of dishonesty in the classroom, laboratory, or shops most infractions will be handled by the faculty member concerned. Major infractions are referred to the Dean of Faculty who will hear and decide all cases brought to him by instructors or appealed to him by students. He may convene a board or committee of Administration and/or Faculty, if he deems it necessary, to also hear and decide any individual case.

k. Soliciting

Any student, solicitor, agent or sales person operating in his own interests and for any purposes not directly connected with College interests, is not permitted to solicit without the written approval of the Vice President of the College.

l. Pets

Animals are not allowed in any College building, in the Student Union, the Residence Halls, classroom or in the College Courts.

m. Parking and Vehicle Registration

1. Vehicle Registration

Every student who is eligible to operate a vehicle in the college area at any time must registrar such vehicle officially with the college. The vehicle registration must be completed at the time the student registers for classes or as soon as the student begins ownership or operation of a vehicle. A transfer of ownership requires a new registration.

Students attending night classes only do not need to registrar vehicles.

2. Display of Permit

BJC parking permits are to be displayed on the lower inside right corner of the front window on the passenger's side.

3. Schedule of Fees and Fines
(Paid in Room 103 Adm. Bldg.)

Registration of	
Vehicle -----	\$0.50
Failure to register	
Vehicle -----	1.00
Stop Sign violations --	1.00
Parking or Speeding violation	
1st Offense -----	1.00
2nd Offense -----	2.00
3rd Offense -----	3.00
Thereafter, loss of permit and subject to disciplinary action.	
Removal of Vehicle ----	1.00
(plus towing charges from College property)	
Failure to display permit properly -----	0.50
Any other traffic violations -----	1.00

4. Parking Regulations

- a. No student parking permitted in faculty, staff, visitors or yellow zones.
- b. Dormitory lot reserved for dorm students only.
- c. College Court lot reserved for married residents only.
- d. Main parking lot adjacent to Administration and Science Building is re-

served for commuting student vehicles---NO DORM OR COLLEGE COURT VEHICLES.

- e. Gymnasium and Vocational areas are not restricted.

5. Speed Limit

Speed limit on campus is 15 miles per hour-in parking lots 10 miles per hour.

ASBJC PUBLICATIONS

Yearbook

The college yearbook, LES BOIS, is published by the Associated Student Body. The cost of the publication is paid by student fees, student picture funds, and advertising.

The editor is appointed by the Student Executive Board. Any student interested in working on the staff, should contact the Vice President's office, 103 in the Administration Building.

School Paper

The college paper, ROUNDUP, is published weekly by the Associated Student Body. The cost of the publication is paid by student fees and advertising.

The student leadership of the paper is divided between two editors, each selected by the Student Executive Board. Each editor serves two semesters, one in the spring as a freshman and one in the fall as a sophomore.

CLUBS & ORGANIZATIONS

1. ASBJC

Presidents' Council

Members are the presidents of the clubs on campus. This organization coordinates the activities of the clubs with the Student Executive Board.

Associated Women Students

Open to all women on the campus. The club sponsors such activities as the Sweetheart Ball, the Big Sister Tea, and several money-making projects.

Sigma Mu

Service organization established for journalism students and staff members of the Roundup and Les Bois.

2. ACADEMIC HONORARY

Phi Theta Kappa

Theta Mu Chapter of the National honorary scholastic society. Open to students with a grade average of 3.5 or better.

3. VOCATIONAL HONORARY

Tau Alpha Pi

An organization to encourage good character and to cultivate fellowship among vocational and terminal business students.

4. SERVICE CLUBS

Golden Z's

A sophomore women's honorary service organization requiring a 3.0 average as one requirement for membership. Its purpose is to promote school activities, school spirit and friendliness on the campus.

Valkyries

A sophomore women's honorary service organization. The purpose of the club is to foster a spirit of competition and friendliness on the campus and to assist in campus activities.

Pi Sigma Sigma

Men's service organization to promote school spirit and assist in campus activities.

Intercollegiate Knights

Men's service organization to promote school spirit and assist in campus activities.

Life Lines

An organization of college women with the following purposes:

- a. To aid all humanity by obtaining pledges of blood to blood banks.
- b. To acquaint the college students with the importance of the blood program and its benefits.

5. CLASS CLUBS

Broadcasting

Members operate KBJC and receive experience in radio work.

Delta Phi Omega

National honorary dramatic society. Membership is gained by points earned in working on play production.

Engineers

An organization dedicated to the furthering of interests in the engineering field.

Forestry

An organization to further interest in the forestry field.

French

Open to all students enrolled in French or those who speak the language.

German

Open to all students taking German. The club meets once a month provide members a chance to use the language.

Homettes

A club to promote friendly association among faculty and students interested in home economics.

International Relations

Open to all students with the purpose of building better relationship among foreign and American students.

Nurses

An organization to develop a spirit of unity among the student nurses.

Spanish

Open to all Spanish students who have completed one and a half semesters of Spanish or the equivalent. At their monthly meeting the club members speak Spanish, play Spanish games, and learn Latin-American songs.

Student National Education Association

Composed of students who express a desire to enter the teaching profession, the club promotes enthusiasm and understanding for the teaching profession.

6. RELIGIOUS

Inter Faith Council

Composed of representatives from each religious group on campus. This organization coordinates religious activities and promotes such programs at the college.

Canterbury

An organization of Episcopal students on campus having as its objectives worship, study, service, and brotherhood.

Christian Disciples

Open to members of the Christian Church.

Lambda Delta Sigma

Composed of two chapters, Alpha of Zeta for men and Omega of Zeta for women; the students are members of the L.D.S. church.

Lutheran

The purpose of this organization is to deepen the spiritual life and promote fellowship among the students.

Newman

Open to all Catholic students. The club meets twice a month for discussions and socials.

Roger Williams

Organized for all students interested in education. The club meets for many social gatherings as well as discussion periods.

Wesleyan

A religious group organized for Methodist students.

Westminister

An organization to promote Christian cooperation on the campus. This group includes many denominations.

7. SPORTS

Rodeo

Organized in 1960 to promote general interest in rodeo, and to keep rodeo performance standards high, according to accepted rules.

Ski

Open to any student interested in skiing. The club sponsors a four-way ski meet at Bogus Basin and gives instruction to beginners.

BOISE JUNIOR COLLEGE STAFF & FACULTY

Abbreviations

A -----	Administration Bldg.	M -----	Auditorium
Bell -----	Bellevue Avenue	S -----	Science Bldg.
HC -----	Health Center	TE -----	Technical Educational Bldg.
L -----	Library	T-1 & T-2 ----	Temporary Wooden Bldgs.

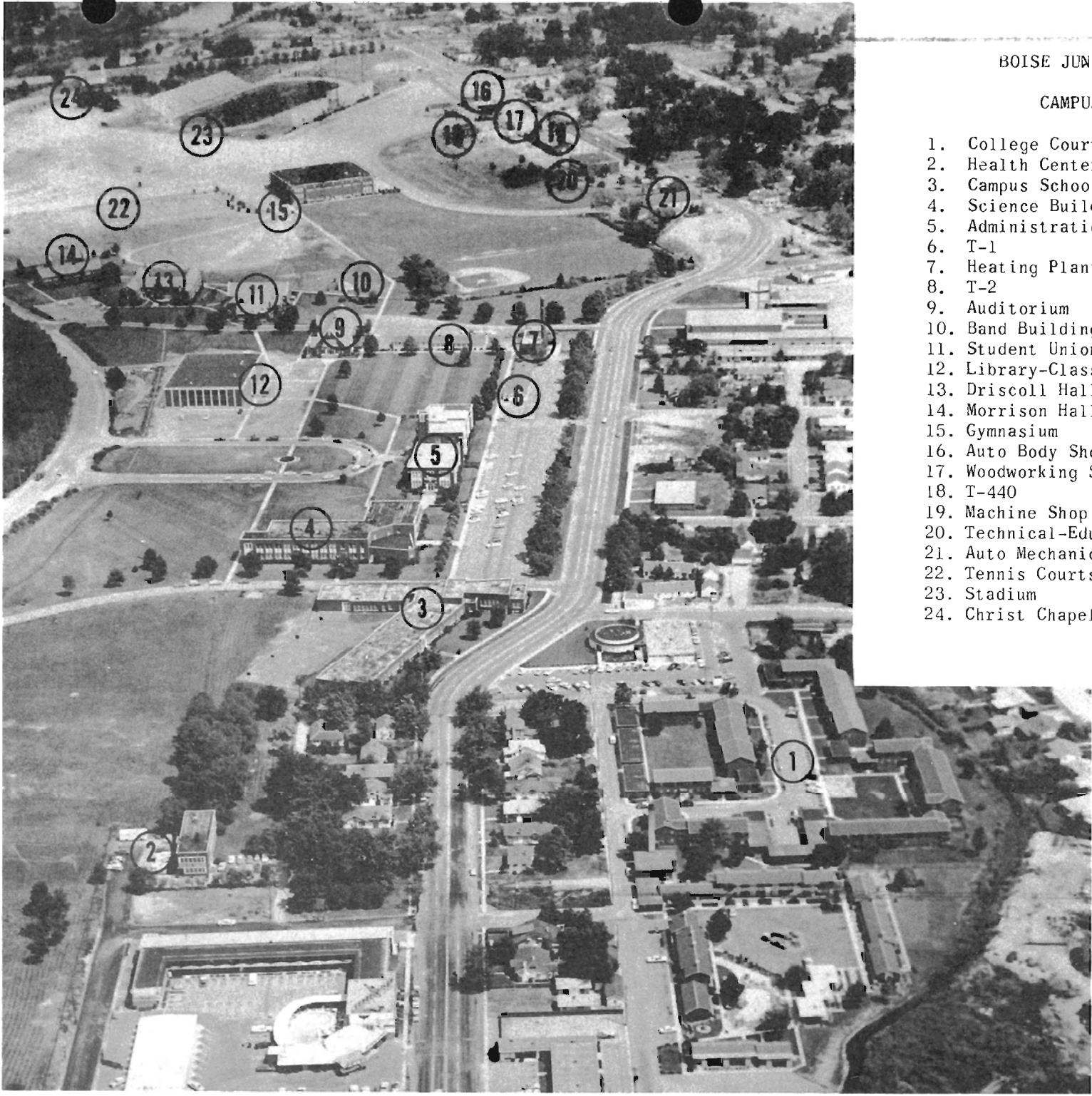
(For location -- see map --- last page)

NAME	SUBJECT	OFFICE	NAME	SUBJECT	OFFICE
Allison, T.F. (Mrs)	Home Ec.	S 105	Metcalf, N. (Mr)	English	L 236
Belknap, H.W. (Mr.)	Life Sc.	S 108-B	Meyer, C.H. (Mr)	Piano	M 52-A
Best, J.H. (Mr.)	Music	M 200	Miles, F.M. (Miss)	Nursing	S 108-F
Boyles, D.P. (Mrs)	Women's P.E.	F, Gym	Miller, R.T. (Mr)	Eng. Debate,	
Bratt, C.G. (Mr)	Music	M 204		Bus. Law	A 200
Bronson, W.S. (Dr)	Psychology	A 120	Mitchell, K. (Mrs)	Piano, Violin	M 103
Buchanan, J.R. (Mr)	Welding	1050 Bell.	Moore, H. (Miss)	Dean of Women	
Buck, E.M. (Dr)	Mathematics	S 204-E		English	A 211
Budge, B.C. (Dr)	College MD	H.C.	Nelson, P.D. (Mr)	Geology	A 304
Bushby, V.J. (Mrs)	Sec. Sc.	A 217	Neilsen, E. (Mrs)	English	L 234
Canavan, Tom (Mr)	Comm.	TE 117	Noh, L. (Mr)	Bus. Adm.	A 205
Carr, F. (Mr)	Photographer	L 225	Obee, D.J. (Dr)	Life Sc.	S 108-D
Carson, W.J. (Mr)	Bus. Adm.	A 203	Oravez, D. (Mr)	Art	L 242
Chaffee, E.B. (Dr)	President	A 101	Ourada, P.K. (Miss)	History	A 106
Chandler, L. (Miss)	Business	A 203	Peck, L.A. (Mr)	Art	L 221
Chatburn, A.H. (Dr)	Dean of Fac.	A 105	Peterson, E.R. (Dr)	Chemistry	S 200
Chatterton, D.N. (Mr)	Men's Pys. Ed.	C, Gym	Phillips, G. (Mr)	Adm. Ass't.	A 115
Cofield, D.H. (Mr)	Electronics	TE 115-B	Phillips, J.L. (Dr)	Psychology	A 121
Dahm, N.F. (Mr)	Engineering	S 204-B	Power, C. (Mrs)	Span., Fr.	A 202-B
Dalton, J.L. (Mr)	Chemistry	S 204-G	Roe, H.M. (Miss)	Sec. Sc.	A 216
Davidson, N.S. (Mrs)	Prac. Nurs.	St. Luke's	Rose, R. (Dr)	Business	A 205
Davis, C.G. (Mr)	English	L 235	Scheffer, M. (Mr)	Sociology	A 303
deNeufville, R. (Dr)	Fr., Ger.	A 202-A	Schwartz, J.R. (Mr)	English	L 237
Dickey, D.R. (Mr)	Ass't. V.P.	A 103	Scudder, D. (Mr)	Distrib. Ed.	A 203
Dugger, J.O. (Dr.)	Education	L 250	Shankweiler, W. (Dr)	Speech, Drama	L 240
Ebert, V.M. (Dr)	Psych., Mar., & Family	A 120	Sieber, D.J. (Mr)	Electronics	TE 119-C
Edlefsen, C.T. (Dr)	Business	A 217	Sigler, M. (Miss)	Asst. Libr.	Library
Emerson, J.C. (Mr)	Chemistry	S 204-C	Smartt, F.H. (Mr)	Mathematics	S 204-G
Everts, E. (Mrs)	Ass't. Libr.	Library	Smith, L. (Mr)	Head P.E.	B, Gym
Fleming, N. (Mrs)	Nursing	S 114	Smith, R.H. (Mrs)	Nursing	S 114
Fleshman, M.B. (Mr)	Auto Mech.	Old Gym	Smull, M. (Mrs)	Biology	S 115
Fritchman, H.D. (Dr)	Life Sc.	S 108-C	Snell, H. (Mr)	Auto Mech.	Old Gym
Fung, W.Y. (Dr)	Philosophy	A 114	Spulnik, J.B. (Dr)	Chemistry	S 204-A
Gottenberg, W.L. (Mr)	Vice Pres.	A 103	Stearns, J.G. (Mrs)	Physics	S 104
Hager, J.F. (Mr)	Mach. Shop	1318 Bell.	Steel, H.L. (Mr)	Ceramics, Art	T-2, 5
Hahn, C.W. (Mr)	Engr. Drawing & Surveying	S 204-E	Sylvester, R.B. (Mr)	English	L 243
Hatch, A.Y. (Mrs)	English	L 207	Telford, I.R. (Mr)	Pol. Sc.	A 114
Hatton, A.H. (Mrs)	Registrar	A 100	Thomson, H. (Mrs)	Journ. Yr. B., School Paper	T-1 B
Hill, K.L. (Mr)	Education	L 248	Tompkins, J.W. (Mr)	Voc. Rel. Subj.	TE 117
Holmberg, R.K. (Mr)	Sociology	T-2, 2	Trapp, L.F. (Mr)	Body, Fender	1200 Bell.
Hunt, E.E. (Mr)	Mathematics	S 204-C	Underkofler, G.W. (Mr)	Business	A 218
Johnson, H. (Mrs)	Sec. Sci.	A 203	Van Liew, W. (Mr)	Draft-Design	TE 215 A
Keller, M.L. (Miss)	Nursing	S 108-A	Waln, C. (Mr)	Voc. Head	TE 112
Kellogg, F. (Mr)	History	A 106	Warwick, J.E. (Mr)	Speech, Eng.	L 241
Kelly, D. (Mrs)	Nursing	S 108-A	Westfall, H. (Miss)	Women's P.E.	F, Gym
Kern, D.R. (Mr)	Bus. Mgr.	A 117	Weston, E.A. (Mr)	Draft-Design	TE 219 B
Kirk, D.R. (Mr)	Biology	S 108-E	Wilbanks, T. (Mr)	English	L 245
Krigbaum, N. (Mr)	Woodwkg. Shop	1310 Bell.	Wilkinson, E.E. (Mr)	Dean of Men	
Lewis, R. (Mr)	Men's P.E.	A, Gym		Psychology	A 211
MacInnis, J. (Mrs)	Dental Asst.	A 301	Winans, E.M. (Mrs)	Mathematics	S 204-F
Madson, G. (Mr)	Speech	L 233	Wolfe, J.R. (Mr)	Ass't. Dean of Faculty	A 105
McBirney, R. (Miss)	Librarian	Library	Woodworth, J.G. (Mr)	Speech, Radio	L 244
Marcy, D.E. (Mr)	Chem, Phys. Sc.	S 204-D	Wu, Hung-sen (Mr)	English	L 232
Margoshes, A. (Mr)	Psychology	A 121	Young, J. (Mr)	Mathematics	S 204-D

BOISE JUNIOR COLLEGE

CAMPUS GUIDE

- 1. College Courts
- 2. Health Center
- 3. Campus School
- 4. Science Building
- 5. Administration Building
- 6. T-1
- 7. Heating Plant & Green House
- 8. T-2
- 9. Auditorium
- 10. Band Building
- 11. Student Union
- 12. Library-Classroom Building
- 13. Driscoll Hall (Men's Dorm)
- 14. Morrison Hall (Women's Dorm)
- 15. Gymnasium
- 16. Auto Body Shop
- 17. Woodworking Shop
- 18. T-440
- 19. Machine Shop & Welding Shop
- 20. Technical-Education Building
- 21. Auto Mechanics & Ceramics Shops
- 22. Tennis Courts
- 23. Stadium
- 24. Christ Chapel



CLASS SCHEDULE
1st Semester

HOUR	MONDAY	TUESDAY	WEDNESDAY	THURSDAY	FRIDAY
8:00 A.M.					
9:00 A.M.					
10:00 A.M.					
11:00 A.M.					
12 NOON					
1:00 P.M.					
2:00 P.M.					
3:00 P.M.					
Evening					

CLASS SCHEDULE
2nd Semester

HOUR	MONDAY	TUESDAY	WEDNESDAY	THURSDAY	FRIDAY
8:00 A.M.					
9:00 A.M.					
10:00 A.M.					
11:00 A.M.					
12 NOON					
1:00 P.M.					
2:00 P.M.					
3:00 P.M.					
Evening					

