

Boise State Departments of Theatre Arts & Music Proudly Present

Rodgers & Hammerstein's

Cinderella

Music by Richard Rodgers

Book & Lyrics by Oscar Hammerstein II

March 24-26, 2011 at 7:30 pm

March 25, 2011 at 10:00 am

March 27, 2011 at 2:00 pm

Morrison Center for the Performing Arts

BOISE  **STATE**
UNIVERSITY

Presented through special arrangement with R&H Theatricals: www.rhtheatricals.com

From the Director

Welcome to our performance of Rodgers and Hammerstein's Cinderella, one of the most popular and cherished musicals in the library of American theatre. This joint production between the Department of Theatre Arts and the Department of Music marks another in a long history of successful collaborations in the performing arts at Boise State University. Approximately one hundred students majoring in theatre arts, music, and other disciplines have combined their efforts and talents with fifteen faculty and staff members to produce this remarkable performance for you. The heartfelt and spirited talents that you will experience on this stage represent Boise State's ongoing commitment to the performing arts. We are honored to provide our communities, both on campus and across the great state of Idaho, with performances that touch, Question, provoke, move, entertain, and Quite simply, bring us all a little bit closer.

The production you are about to see is also a showcase of dynamic and high-profile work that takes place every day on our campus. Within our classrooms, rehearsal halls and studios, music rooms, and scenic and costume shops, faculty, staff, and students spend long hours every day wrestling with the multiple facets of theatre and music scholarship, production, and performance. In addition, the Department of Theatre Arts produces approximately 60 performances a year of six to eight different theatre and dance productions; the Department of Music produces a total of about 140 performances in the same period. We are not only one of Idaho's greatest universities; we are one of the state's largest producing organizations!

We are proud of the talents and dedication of our students, staff, and faculty, and we are pleased to welcome you today to share their work. No creative effort is ever complete without its audience and because of this you become our most important partner. Thank you for joining us. On behalf of the Departments of Theatre Arts and Music, thank you for supporting the next generation of professional performing artists, designers, playwrights and screenwriters, scholars, teachers, craftspeople, and managers and administrators.

Dr. Richard Klautsch, Chair
Department of Theatre Arts

Cast

Cinderella	Rachael DeAnne Montoya
King	Chris Canfield
Queen	Bronwyn Nichole Leslie
Stepmother	Lina Chambers
Portia	Tiffany Hernandez
Joy	Christy Rolfe
Prince	Wade Crossman
Fairy Godmother	Krista Brook Nielsen
Herald	Jacob Spjute
Chef	Alaggio Laurino
Chef's Attendant	Adrian Leon
Steward	Declan Kempe
Footmen	Loren Jones Nathaniel Pohl
Townspeople	India Allen Sasha Allen-Grieve Eric Anderson Samantha Berry Jesse Claus Rachel Dickerson Gretchen Halle Declan Kempe Adrian Leon Natalie MacLachlan Lindsey Norris Sarah Dallas Salvucci Pullen Tiara Thompson Robert Tombari Richard Welker

Orchestra

Flute 1	Iris Chen
Flute 2/Piccolo	Dorothy Van Egmond
Oboe	Cassandra Crowell
Clarinet 1	Carola Winkle
Clarinet 2	Jeanette Odell
Bass Clarinet	Alan Anderson
Bassoon	Lee Delling
Trumpet 1	Dennis Keck
Trumpet 2	Brendan Grzanic
Horn 1	Jennie Ficks
Horn 2	Jeff Cates
Horn 3	Fred Hebert
Trombone 1	Roy Olds
Trombone 2	Bob Newell
Percussion 1	Bill Kennedy
Percussion 2	Allen Ellis
Violin	Becky Green, concertmaster Anna Babichenko Rosa Mickey Aly Pedersen Jessica Harned Robyn Whitmore
Viola	Nick Cesare Amy Tompkins Emily Jones
Cello	Erica Seibel SamaQuias Lorta
Bass	Mary Creek

Production Staff

Director	Richard Klautsch
Musical Director	Laura Rushing-Raynes
Conductor	Christopher Raynes
Director of Orchestra	Craig Purdy
Choreographer	Marla Hansen
Scenic Designer	William J. Langley, Jr.
Costume Designer	Ann Hoste
Lighting Designer	Alfred Hansen
Stage Manager	Sarah Kelso
Technical Director	Michael Baltzell
Scene Shop Manager/ Asst. Technical Director	Fran Maxwell
Costume Shop Manager	Keri Fitch
Props Master	Ian Falconer
Character Coach	Ann Price
Rehearsal Accompanist	John Bostron
Asst. Lighting Designer	Katie Valentine
Production Dramaturgy	Leah Reynolds
Asst. Stage Managers	Ariel Price Isaiah Alloway
Wardrobe Supervisor	Kayla Keller
Dressers	Ingrid Ebbers Jon Waters Breck Thompson Fran Jones Jennifer Stohler Sara Benedict
Props Assistants	Loren Jones Natalie MacLachlan
Costume Construction	India Allen Eric Anderson Diane Applegate Tiffany Edgar Gretchen Halle Rachel Kaufman Tandra Rae-Lloyd Jennifer Montzka Teresa Rodrick Christy Rolfe Brian Weigel Students of THEA 118 Costume Lab
Crown Construction	LJ Demitita
Scenic Construction	Ian Falconer Nate Pohl Josh Frachiseur Students of THEA 118 Scenic Lab
Publicity & Program	Carrie Applegate
Publicity Assistant	Leah Reynolds
Photographer	Carrie Quinney

Special Thanks

Idaho Shakespeare Festival
Josh Frachiseur
Boise Metal Works
Boise Music Week
Boise Contemporary Theater
Opera Idaho
Heidi Kraay
Mathew Lewis
Gary Holcomb
Liquid Lounge
Solid Bar & Grill

Boise State University Administration

Bob Kustra, President
Martin Schimpf, Interim Provost and Vice President,
Academic Affairs
Stacy Pearson, Vice President, Finance and
Administration
Mark Rudin, Vice President, Research
Howard Smith, Vice President, University
Advancement
Mara Affre, Interim Vice President, Student Affairs
Kevin Satterlee, Vice President, General Counsel

Theatre Arts Department

Dr. Richard Klautsch, Chair
Carrie Applegate, Administrative Assistant
theatre.boisestate.edu
208.426.3957
Accredited Institutional Member of the National
Association of Schools of Theatre

Music Department

Dr. Mark Hansen, Chair
Jennie Ficks, Administrative Assistant
boisestate.edu/music
208-426-1596
Accredited Institutional Member of the National
Association of Schools of Music

Cast Biographies



Rachael DeAnne Montoya ~ *Cinderella*

Rachael is a senior at Boise State. Recently she performed in *La Traviata* in the Tuscia Opera Festival in Viterbo, Italy. Locally, she was in Opera Idaho's *Our Town*, Boise State's *Dido and Aeneas*, *Pippin*, and *The Gondoliers*, *You're a Good Man Charlie Brown*, *Camelot*, *The Music Man* and *The King and I*. She has performed with Idaho's Critical Mass and in Boise Philharmonic's "A Night at the Movies" concert. Rachael will graduate this fall Magna Cum Laude in Music Education and Vocal Performance.

Bronwyn Nichole Leslie ~ *Queen*

Cinderella is Bronwyn's first production at Boise State. She has been involved in several local productions, including Boise's Old Penitentiary *Frightened Felons*, *Big! The Musical*, and several short-films. After discovering a passion for filmmaking, Bronwyn has become involved with every stage of the production process. Bronwyn is in her last semester at Boise State. She will receive a BA in Mass Communication/Journalism and a certificate in Cinema and Digital Media Studies.



Tiffany Hernandez ~ *Portia*

Tiffany has had the privilege of being in *Crazy for You*, *Once Upon a Mattress*, and *The Gondoliers*. Recent roles include Liat in Opera Idaho's *South Pacific*, Sister Sophia in Knock 'Em Dead Theater's *Sound of Music*, and The Second Witch in *Dido and Aeneas*. It has been an amazing four years at Boise State. Tiffany plans to graduate in December with a degree in Vocal Performance and a degree in Music Education.

Wade Crossman ~ *Prince*

Wade Crossman is making his Boise State debut in *Cinderella*. He is a junior and recent transfer from Arizona, studying Dramatic Writing and Philosophy. His previous collegiate roles include Linus VanPelt in *You're a Good Man, Charlie Brown* and Jim O'Connor in *The Glass Menagerie*, and he garnered his first regional theater credit in Phoenix Theatre's *Les Miserables*. He looks forward to graduating in the fall of 2012.



Jacob Spjute ~ *Herald*

Jacob is very excited to be able to perform in this production of *Cinderella* at Boise State. He recently returned from his LDS mission to Argentina where he lived for two years. He is now working to return to school in the fall and pursue a music career.

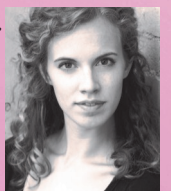


Chris Canfield ~ *King*

Chris Canfield is a theatre major at Boise State in his sophomore year. *Cinderella* is Chris' third Boise State University production, after participating in Shakespeare's *As You Like It* and Mary Zimmerman's *Metamorphoses* last year. Outside of school, Chris has participated in various productions such as *Frightened Felons* at the Old Idaho Penitentiary and the movie *Three of a Kind* expected to release this summer. Chris is originally from Boise, where he attended Boise High School.

Lina Chambers ~ *Stepmother*

In the past two years, Lina has had the pleasure of playing two Boise State mainstage leads: Blanche in *A Streetcar Named Desire*, and Rosalind in *As You Like It*. She made her Idaho Shakespeare Festival debut this summer, playing Helena in *A Midsummer Night's Dream*—a role she reprised from ISF's sister company, The Great Lakes Theater Festival. This summer, Lina also appeared in *An Ideal Husband*, and *The Woman in Black* at ISF. Lina is a fifth year senior, and is very excited to be graduating in the spring.



Christy Rolfe ~ *Joy*

Christy Rolfe is excited to be part of the magical experience of *Cinderella*. She has done shows at Boise State before such as *A Streetcar Named Desire* and the Theatre Majors Association production of *Don Juan in Chicago*. She is a senior at Boise State as well and is sad to soon be leaving.

Krista Brook Nielsen ~ *Godmother*

Krista Brook Nielsen was born in Littleton, Colorado. She has participated in productions such as *The King and I*, *Joseph and the Amazing Technicolor Dreamcoat*, *Annie*, *Comin' Round the Mountain*, *Carousel*, *A Knight to Remember* and *Who Dunnit*.

Krista moved to Boise, just before high school and participated in theater classes and drama clubs. Since moving to Boise she's been in *Grease*, *Dido and Aeneas*, and *Evening at the Opera*. She is a junior, studying Music Performance, Voice emphasis.



Alaggio B. Laurino ~ *Chef*

Originally from Cottonwood, Idaho, Alaggio graduated from the NYC American Musical and Dramatic Academy in 2007 and worked as a touring actor for three years. His credits include Noah Claypole in the national tour of *OLIVER!*, Mr. Mistofolees in *CATS* and Peter Van Damm in *The Diary of Anne Frank*. He is currently a freshman at Boise State with a double major in Art and Art History.

Adrian Leon ~ Chef's Attendant/Townsmen

Adrian is a freshman, Theater Arts Secondary Education major. He is from Pinetop-Lakeside, Arizona. His past roles include Tony in *West Side Story*, Sir Harry in *Once Upon A Mattress*, Pompey in *Measure For Measure*, Maurice in Disney's *Beauty and the Beast*, and Pablo in *A Streetcar Named Desire*. He is also a member of the Boise State University Singers and the Meistersingers.



Declan Kempe ~ Steward/Townsmen

Declan Kempe is currently a senior in the Boise State Theatre Arts Department and plans on graduating with a performance emphasis in Fall 2011. He has performed in several shows at Boise State, many in conjunction with the Theatre Majors Association, such as *SubUrbia*, *Don Juan in Chicago*, *A Dream Play*, *As You Like It* and most recently *Stop Kiss*. This is Declan's second musical performance after Boise State Theatre Arts 2009 Production of *Pippin*.

Loren Jones ~ Steward/Townsmen

Loren Jones is a former United States Marine and is currently a junior at Boise State University, majoring in Theatre Arts. He has worked as an actor in many Boise State Theatre Arts productions such as *A Streetcar Named Desire*, *Metamorphoses*, *As You Like It* and *In the Santooths*. He has also worked with many local theatres and has worked at the Idaho Shakespeare Festival as a military consultant.



Nathaniel Pohl ~ Footman

Nate first got into theatre in junior high and, except for a brief hiatus when he worked in the Wyoming oilfields, has been active ever since. His acting credits include *Metamorphoses*, *As You Like It*, *To Kill a Mockingbird* and the recent production of *A Streetcar Named Desire* at Boise State.

India Allen ~ Townswoman

India has been involved in the performing arts from childhood. She has studied theatre in and around Boise for twelve years. She has also studied voice during her seven years singing with various operatic choirs, and in private lessons. India is a Sociology major at Boise State. Last year, she worked in partnership with the Boise State Department of Nursing, to bring an element of realism to training simulations by portraying medical patients.



Sasha Allen-Grieve ~ Townswoman

Sasha grew up in Boise participating in the Idaho Shakespeare Festival summer drama school, including two years with the Apprentices Program. She attended Boise High School where she continued theatre with roles such as Ruth in *Blithe Spirit* and Emily Brent in *Ten Little Indians*. Sasha is currently a sophomore majoring in Theatre Arts. At Boise State she has served as an assistant stage manager in the Theatre Arts Department's production of *Metamorphoses* and Mrs. Winsley in the Theatre Majors Association production of *Stop Kiss*.

Eric Anderson ~ Townsmen

Eric Anderson is a sophomore at Boise State. He was born in Boise and has always been in love with the theater. He has been in *Two Rooms* and *The Majestic Kid*. Eric has an affinity for musical theater, and worked for five months at Prairie Dog Productions. A theatre major, Eric is an active member in the Theater Major Association and spends time volunteering at several local GLBT organizations



Samantha Berry ~ Townswoman

Samantha is a junior is majoring in Theatre, Performance emphasis. This is Samantha's first production with Boise State University. Previous theatrical and musical experiences include: *The Music Man*, *Flapper*, *Big: The Musical*, *Aladdin and his Wonderful Magical Lamp*, *West Side Story*, *Spoonriver Anthology*, *Pepi's Pasta On*, *Anything Goes*, *A Midsummer Night's Dream*, *1776*, *Postcards*, *Measure for Measure*, *White Mountain Barbershop Concert*, *You're a Good Man Charlie Brown*, *To Burn a Witch*, *The Beaux Stratagem*.

Jesse Claus ~ Townsmen

Jesse Claus is a Boise native and a graduate of Borah High School. After high school, Jesse served overseas in the Idaho Army National Guard. After returning to the states, Jesse earned is associate degree at Mt. Hood Community College's music education and sang tenor in their vocal jazz ensemble. He is a music education major and sings with the school's jazz choir. Jesse has performed many ensemble roles throughout his artistic career, including choruses of *West Side Story* and *Fiddler on the Roof*.



Rachel N. Dickerson ~ *Townswoman*



Rachel is a community member who is very excited to be working with Boise State University and their production of *Cinderella*. Not a stranger to the musical theater stage, Rachel has been seen in roles such as: Sara in *Ragtime* and Ti Moune in *Once on This Island* with Knock 'Em Dead Theater; also in many chorus roles with Starlight Mountain Theater in shows such as, *Seven Brides for Seven Brothers*, *Crazy for You*, *Pirates of Penzance...Goes West*, and the supporting role Alice in the musical *Big River, the Story of Huckleberry Finn*.

Natalie MacLachlan ~ *Townswoman*



Natalie MacLachlan is a junior majoring in Theatre Arts, Performance & Directing emphasis. Although she was born and raised in Boise, Natalie is a transfer student to Boise State from University of Nevada, Las Vegas where she studied Hotel Management and Film. While this is Natalie's first performance at Boise State she has been involved in the technical aspects of many Boise State productions, such as stage management, wardrobe, and props. Natalie is also a member of Boise State's Theatre Majors Association.

Sarah Dallas Salvucci Pullen ~ *Townswoman*



Sarah is a Mathematics major and this is her freshman year at Boise State. She hails from Reno, Nevada. She has previously performed in Rodgers and Hammerstein's *Cinderella* in high school. She has traveled to New York City to perform in Carnegie Hall as a member of the New England Symphonic Ensemble under the direction of Guest Conductor John Rudder. She has also traveled to China as a member of the McQueen Core Jazz Ensemble to perform in the World Choir Games in Shaoxing.

Tiara Thompson ~ *Townswoman*

Tiara Thompson is originally from Idaho but graduated high school in Wyoming. In her fourth year at Boise State, she is a Dean's List student studying English, Theatre Arts and History. Her previous experience includes such roles as Lily St. Regis in *Annie* and Becky Thatcher in *The Adventures of Tom Sawyer*. Besides performance in theatre, she is also interested in costuming and has been a dresser for previous Boise State productions.

Robert Tombari ~ *Townswoman*



Robert is in his second semester as a Theatre Arts major, Acting emphasis. Robert is from Spokane, Washington. He was involved in theatre at his high school, performing as Orgon in *Tartuffe* and J. B. Biggley in *How to Succeed in Business Without Really Trying* and various other productions. This is his first show at Boise State. He last performed in Stage Coach Theatre's *A Christmas Twist* as Bob Cratchit.

Boise Music Week

Boise's Oldest Arts Celebration
 kicks off with performances of *Bye Bye Birdie* on April 27-30, 2011
 Boise Music Week's other events on May 1-7, 2011
ALL EVENTS ARE FREE of CHARGE!

For ticket information and details of all events during the annual celebration, visit www.boisemusicweek.org

Bye Bye Birdie Signature Sponsor
Bank of America

VELMA V. MORRISON
 CENTER FOR THE PERFORMING ARTS

Production Staff Biographies



Richard Klautsch ~ Director, Chair Theatre Arts Department

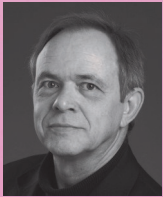
Richard has been a theatre arts professor and a professional actor in Boise since 1992. He has worked for seven seasons at Boise Contemporary Theater and for eighteen seasons at the Idaho Shakespeare Festival. At BCT, Richard has appeared in *True West*, *The Cherry Orchard*, *The Underpants*, *The Memory of Water*, *The Pillowman*, and in *I Have Before Me...* He also directed BCT's *Lobby Hero* and *A Number*. At ISF, he has appeared in such roles as Sir Robert in *An Ideal Husband* (also performed at Great Lakes Theatre Festival in Cleveland), LaFew in *All's Well That Ends Well*, The Duke in *Measure for Measure*, Don Armado in *Love's Labor's Lost*, Kent in *King Lear*, Brutus in *Julius Caesar* (also at GLTF), Page in *The Merry Wives of Windsor*, Duke Senior in *As You Like It*, Henry in *The Fantasticks*, Salieri in *Amadeus*. Two years ago he performed in a production of *Art* at the Boise Art Museum, directed by Lynn Allison. He has been a guest artist at UC Santa Barbara, where he appeared in a production of *Timon of Athens* as part of the Lit Moon World Shakespeare Festival. Richard has performed at Primary Stages in New York City, the Attic and Detroit Repertory Theaters in Detroit, the Shakespeare Society Theatre in Los Angeles, the Kennedy Center in Washington, D.C., and in Jeff Daniel's original play *Shoe Man* at the film actor's Purple Rose Theatre in Chelsea, Michigan. Richard received his MFA and PhD degrees from Wayne State University in Detroit.

Laura Rushing-Raynes ~ Musical Director



Soprano Laura Rushing-Raynes has appeared on concert, recital and opera stages in the continental United States, Hawaii, Great Britain, and Mexico. Dr. Rushing-Raynes has a large and varied concert and recital repertoire and has also performed many opera roles. In 2009, she made her professional opera conducting debut in Opera Idaho's production of *Amahl and the Night Visitors*. In April 2011, she will be featured in Opera Idaho/Idaho Dance Theatre performances of Ricky Ian Gordon's *Orpheus and Euridice* for soprano, clarinet and piano.

At Boise State, she heads the Voice Area in the Department of Music, teaches graduate and undergraduate voice, courses in vocal pedagogy, and is a co-director of Opera and Music Theatre programs. A long-time practitioner of yoga and associated body-mind techniques, Dr. Rushing-Raynes is one of a growing number of professional voice teachers working to integrate these practices into mainstream use in the training of singers and teachers.



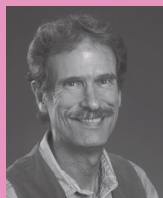
Dr. Christopher Raynes ~ Conductor

(DMA, University of Arizona) Christopher performed and conducted in much of continental United States and in England. Locally, he has sung with the Boise Philharmonic, the Boise Master Chorale, and as founding director of the Resident Company has sung with, stage directed and conducted many Opera Idaho productions. At Boise State, he is currently Adjunct Professor of Music having also served as Acting Director of Choral Activities. His responsibilities include teaching voice, co-directing the Boise State University Opera Theatre and conducting the Musical Theatre productions. He has recently conducted *Man of La Mancha*, *Gondoliers*, *The Medium*, *Pippin*, *Into the Woods*, and stage directed *Gondoliers*, *The Abduction from the Seraglio*, and *The Merry Wives of Windsor*. A stroke survivor, he remains active as a teacher, conductor, stage director and writer.

Marla Brattain Hansen ~ Choreographer



Marla is an Associate Professor at Boise State University in the Department of Theatre Arts and directs the Dance Minor, the Dance Option BA Degree and Summer DanceFest. Marla choreographs regularly for Boise State productions including *Metamorphoses*, *Cabaret*, *HMS Pinafore*, *Pippin*, *Into the Woods* and *Damn Yankees*. She is Co-Artistic Director of Idaho Dance Theatre, professional company in-residence at Boise State and has choreographed over 60 ballets for the company. She loves to collaborate with other artists and has worked with Opera Idaho, Del Parkinson, The Verde Percussion Group, among others. In 2009 she received the Award for Distinguished Community Engagement from the College of Arts and Sciences at Boise State. In 2007 she was named the American Alliance for Health, Physical Education, Recreation and Dance, "Dance Educator of the Year" in the Northwest District. She has also received the Idaho Commission on the Arts Artist Fellowship.



William J. (Jim) Langley, Jr. ~ Scenic Designer

A native of Twin Falls, Idaho, Jim received his AA in Speech and Drama from The College of Southern Idaho, BA in Theatre Arts from Boise State University, MA in Dramatic Art from the University of California, Santa Barbara, and an MFA in Design from Illinois State University. After teaching at Twin Falls High School, Central University of Iowa, and Bradley University, Jim returned to Boise State four years ago. Jim has free-lanced design and technical assignments at The American Repertory Theatre (Boston), Northeastern University, McNeese State University, New Rep Theatre (Newton, MA), The American Stage Company (St. Petersburg, FL), The Intiman Theatre (Seattle), and The Company of Fools in Hailey, ID.

Ann Hoste ~ Costume Designer



Ann Hoste is a two-time recipient of the Idaho Arts Commission Fellowship for artistic excellence; she also received a Kennedy Center/American College Theatre Festival Fellowship for Outstanding Achievement as a Teacher Artist in 2007. Her costume design credits include *Amadeus* for Great Lakes Theatre Festival, *Uncle Vanya* for Company of Fools, *The Miser* for Central Missouri Repertory, *Stop Kiss* for Boise Contemporary Theater and *King Henry IV* for Idaho Shakespeare Festival. Ann is Associate Professor of Theatre Arts and Head of Design at the University of Idaho; she is also a member of United Scenic Artists and the

International Alliance of Theatrical Stage Employees.



Michael Baltzell ~ *Technical Director*

Michael is an Associate Professor in the Theatre Department at Boise State where he is also the technical director and designs and directs many productions. He directed two student written productions, *Drop* and *In the Sawtooths*, which were chosen to perform at the Kennedy Center in Washington D.C. He has been a set designer for Boise Contemporary Theater for 14 years, directed two of their productions: *Lonely Planet* and *Three Days of Rain*, designed sound for *Cripple of Innishman*, and appeared onstage in *Physics of Regret*. He has received the Mayor's Award for Excellence in the Arts, a Nell Shipman Award, and a fellowship grant from the ICA. Mike also worked as a designer, technical director and scenic artist at Idaho Shakespeare Festival for over 25 years. He wrote music for Idaho Theatre for Youth, most notably for *Moby Dick*, which was invited to perform in the International Congress of Theatre for Children and Young People in Rostov on Don, Russia. Michael worked with Boise City Arts and History and Zoo Boise on their African Plains Exhibit. He designed the scenery for Opera Idaho's production of *Faust* and a 14' swimming pool for Boise State Theatre Arts production of *Metamorphoses*.

Alfred Hansen ~ *Lighting Designer*

Fred is the technical advisor for the Danny Peterson Theatre as well as the lighting designer and technical director for Idaho Dance Theatre. He co-founded Idaho Dance Theatre in 1989 and worked as a dancer and choreographer for many years before moving into lighting design. In 1991 he received the Idaho Commission on the Arts Artist Fellowship for excellence. His numerous lighting design credits include Boise State Theatre Arts and Music Department productions, Idaho Theater for Youth, Boise Contemporary Theater, Balance Dance Company, and Eagle Performing Arts Academy.



Keri Fitch ~ *Costume Shop Manager*

Keri has been the Shop Manager for Boise State University for the past five years. Prior to that she was Costume Shop Manager for The California Shakespeare Theatre, San Francisco Shakespeare Festival Berkeley Repertory Theatre, The Western Stage, and Solano College Theatre. She has taught Costume Design, Stage Make-up and Fashion History. In addition, as a Costume Designer she has designed for Berkeley Repertory Theatre, San Francisco Shakespeare Festival, New Conservatory Theatre, Las Positas College, Berkeley Opera, and most recently *Dead Man's Cell Phone* for Boise State University.

Fran Maxwell ~ *Scene Shop Manager*

Fran is celebrating her 13th year in the Theatre Arts Scene Shop. As the Assistant Technical Director she has constructed a 2,700 gallon pool for *Metamorphoses*, the Louvre for *Interrogating the Nude*, a New Orleans home for *A Streetcar Named Desire*, and now has given a princess her carriage for *Cinderella*. When she's not working for Boise State she is either working in the properties department of Boise Contemporary Theater or The Idaho Shakespeare Festival. One of her favorite projects was theming the Zoo Boise African Plains Exhibit (2008) and What's in a Name Exhibit (2010.)



Ann Price ~ *Character Coach*

Ann has worked as a voice and dialect coach for the Idaho Shakespeare Festival, Company of Fools in Hailey, and for several Boise Contemporary Theater productions including *Tru*, *Pavilion*, and *Animals Out of Paper*. Ann directed *Krumblin' Foundation* for BCT and performed as Vi in the BCT production of *Memory of Water*. She has also directed the Boise State University productions of *Metamorphoses*, *Tragedy: a Tragedy*, and *Memorandum*. Ann teaches voice and dialects for the Theatre Arts Department.

Sarah Kelso ~ *Stage Manager*



Sarah was born and raised in Boise and will graduate in May with a degree in Theatre Arts, Stage Management emphasis. *Cinderella* is the last of many productions Sarah has stage managed at Boise State, including *A Streetcar Named Desire*, *Metamorphoses*, (productions recognized by the Kennedy Center for her work), and *A Dream Play* for which she was a Stage Management award regional finalist of the Kennedy Center American College Theatre Festival in 2009. Sarah worked this past summer as a production assistant at the Idaho Shakespeare Festival on *A Midsummer Night's Dream*, *An Ideal Husband*, and *The Woman in Black*.



Isaiah Alloway ~ *Assistant Stage Manager*

Isaiah is a freshman studying Theatre Arts, Secondary Education. As a Boise native, he has previous theatre experience at Centennial High School in technical aspects of theatre. He also has acting experience with Starlight Mountain Theater.

Ariel Price ~ *Assistant Stage Manager*



Originally from Sacramento, California, Ariel is a sophomore majoring in Theatre Arts. She was the assistant creative director for *Frightened Felons* at the Old Idaho Penitentiary, Halloween 2010. She has previous high school theatre experience in props design and set construction. Ariel is currently employed as the Danny Peterson Theatre House Manager for the Theatre Arts Department.

Folk Literature and Magic Tales

The tale which provided the inspiration for *Cinderella* is part of a category of fiction called *folk literature*. Important figures such as Sigmund Freud, Carl Jung, Bruno Bettelheim and Joseph Campbell have perceived folk literature as an entry point into the unconscious and a source of unexpected and significant insights into the essence of human experience. The true power of these ancient tales, which entertain us while relating truths basic to our emotional, psychological and spiritual well-being, continues to be a source of fascination to us.

There are two types of poetic or prose folk stories: *legends* and *fictional tales*.

Legends attempt to explain reality by accounting for phenomena such as the origin of the world and human race, explaining the nature of God or the gods and predicting how the world will end. The contents of legends often become the basis of belief systems. They are the foundation of mythology and typically contain vivid accounts of hero figures, natural disasters, military encounters and golden ages of the past. For example, a legend of a flood that covered the world and killed nearly all life, similar to the Biblical legend of Noah's Ark, is found in many ancient societies.

Fictional tales, as defined by the Brothers Grimm, can be divided into the categories of *magic tales*, *romance tales*, *animal tales*, and *anecdotes* (a category which includes numbskull stories, clever individual and stupid individual stories, lucky accident stories and tales of lying).

Magic tales, the type which inspired *Cinderella*, often incorporate supernatural enemies, enchanted family members, supernatural tasks that must be accomplished, supernatural helpers, magic objects, supernatural powers and supernatural knowledge. The central character in a magic tale is a hero or heroine who attempts to escape from everyday reality into the realm of magical experiences where their expectations are met. They then return to the "real" world to live "happily ever after."

Cinderella is a folk tale told throughout the world in which a mistreated, impoverished heroine receives supernatural aid in finding love and escaping her malicious step-family. The oldest known version of this tale was told in China in the 9th century. The popular English version is a translation of Charles Perrault's *Cendrillion* which he wrote in French in 1697. More than 500 versions of the Cinderella tale have been documented in Europe alone. The one you are about to watch is among the most popular.

By Sarah Schlesinger
Music Theatre International

SUMMER DANCEFEST 2011



Summer DanceFest 2011 offers the highest quality training for today's dancer during two weeks of intensive training in ballet, pointe, men's class, pas de deux, jazz, and modern. It is the place to gain technique, core strength, versatility of style and performing experience.

Monday, June 13 - Saturday, June 18
& Monday, June 20 - Saturday, June 25

Presented by Boise State Theatre Arts Department and Idaho Dance Theatre

Scenes and Musical Numbers

Act I

- Overture (instrumental)
- The Prince Is Giving a Ball
- Cinderella March (instrumental)
- In My Own Little Corner
- Royal Dressing Room Scene
- In My Own Little Corner (Reprise)
- Impossible; It's Possible

Act II

- Gavotte (instrumental)
- Ten Minutes Ago I Saw You
- Stepsisters' Lament
- Waltz for a Ball (instrumental and Chorus)
- Do I Love You Because You're Beautiful?

Fifteen Minute Intermission

Act III

- When You're Driving Through the Moonlight
- A Lovely Night
- The Search (instrumental)
- Do I Love You Because You're Beautiful? (reprise)
- Finale (instrumental)

The Sleeping Beauty



APR 9 AT 2:00 & 8:00 PM

AT THE MORRISON CENTER

CALL FOR TICKETS: 426-1110, or visit: BalletIdaho.org



BALLET IDAHO
PETER ANASTOS, ARTISTIC DIRECTOR

performance sponsors



HB VENTURES



media sponsors



THEATRE ARTS DEPARTMENT

BRINGING GREAT
STORIES
TO LIFE

Design

Performance

Secondary Education

Directing

Dance

Stage Management

Dramatic Writing



Nicole Orabona and Loren Jones in the Theatre Arts Production of Metamorphoses, 2010